



Implementing the Water Utilities Solution



ArcGIS for Water Utilities

Maintain comprehensive water distribution, sewer, and stormwater records; coordinate and plan capital projects; and improve the operation of utility networks.

Get Started

Learn how to get started with ArcGIS for Water.

GET STARTED

<http://solutions.arcgis.com/utilities/water/>

Foundational Solutions

A collection of services and maps to get started with ArcGIS for Water Utilities.

[? Learn More](#)

Maintain Utility Assets

A collection of editing maps used to maintain comprehensive water distribution, sewer, and storm water records.

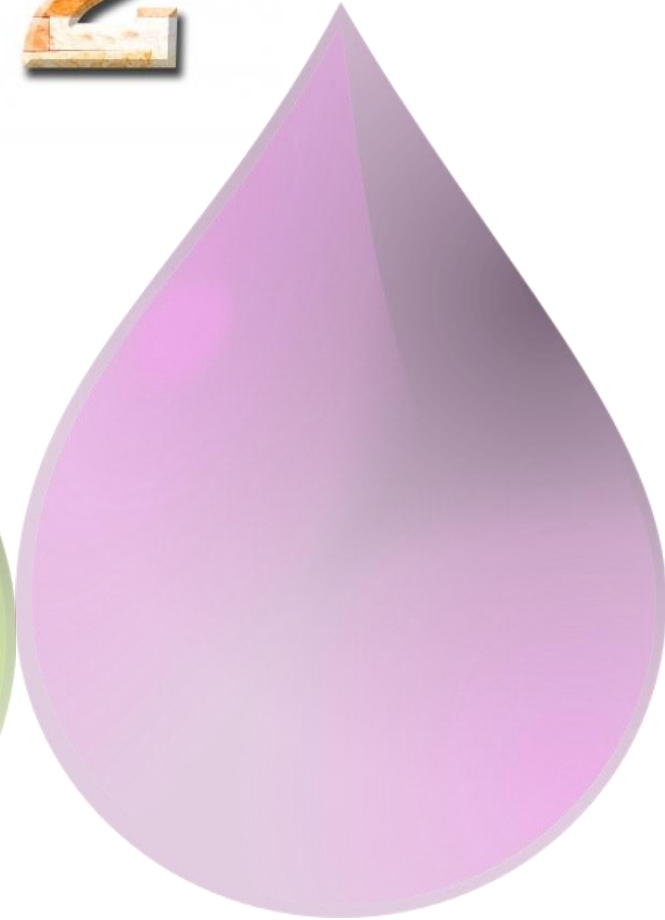
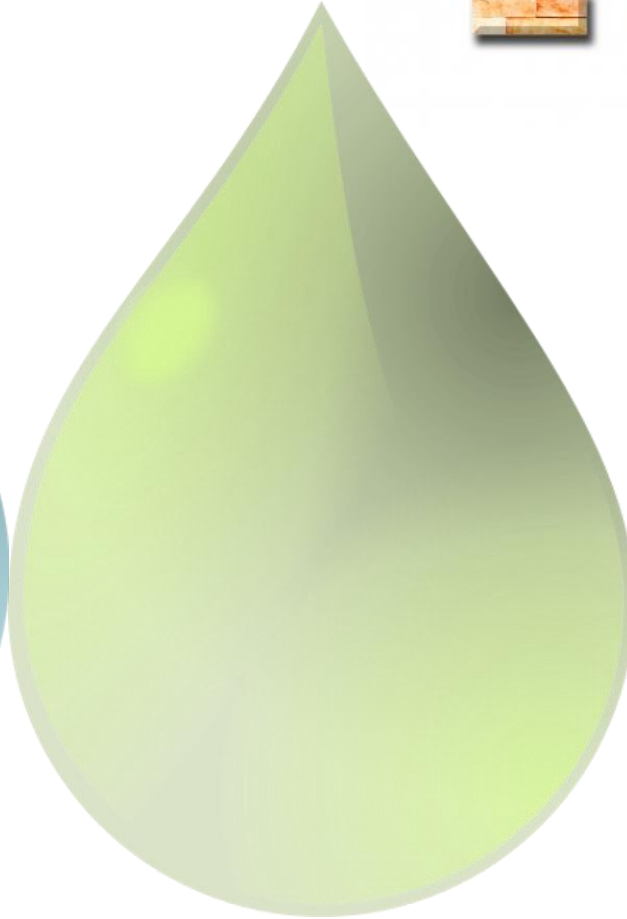
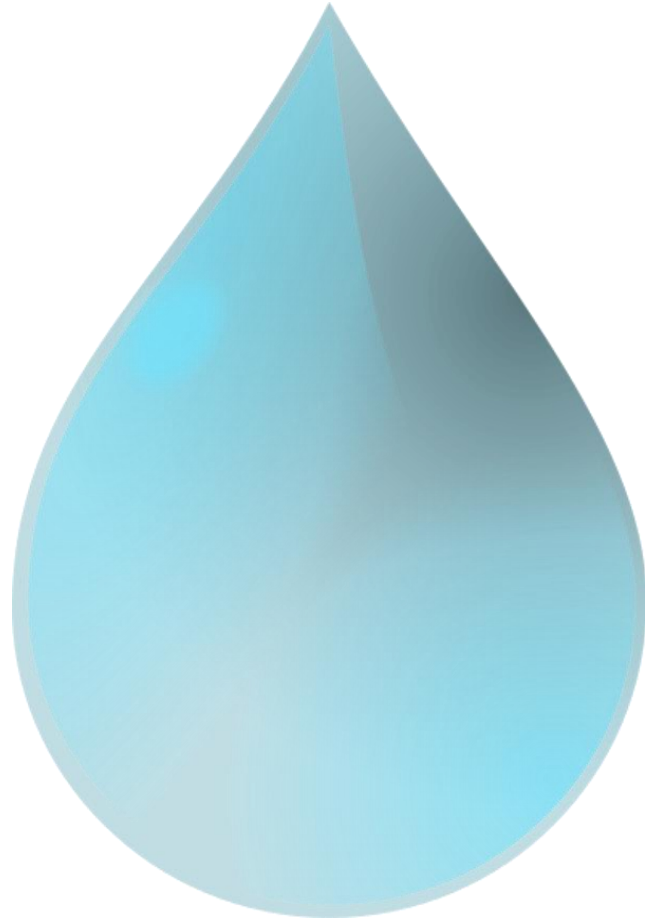
[? Learn More](#)

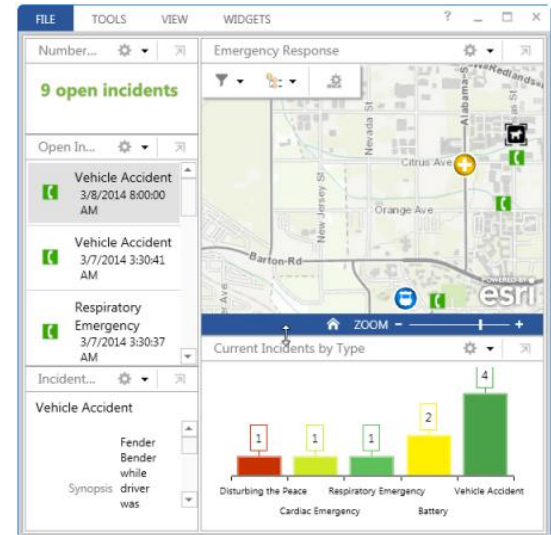
Explore the ArcGIS Online Model Organization for Water Utilities.

LEARN MORE

From our Blog

12



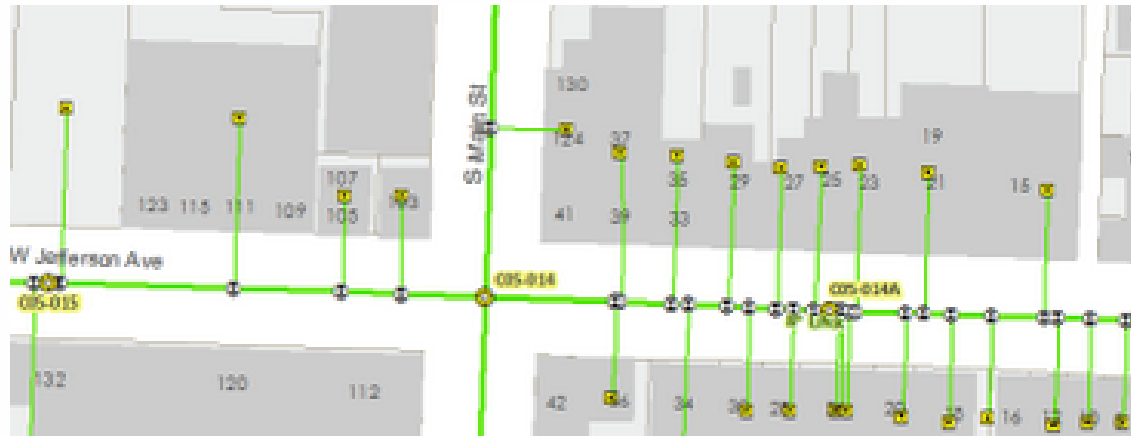




Maintain Utility Assets

A collection of editing maps used to maintain comprehensive water distribution, sewer, and storm water records.

[? Learn More](#)



Publish Utility Maps

A collection of web-based maps and services that provide employees information about fundamental water, sewer, and storm water utility networks.

[!\[\]\(d3fb9f94af8b26d1c844efa9a98805b0_img.jpg\) Learn More](#)



Respond to Emergencies

A collection of maps and apps that support your utility during an emergency.

[? Learn More](#)



Improve Infrastructure Planning

A collection of maps and apps that can be used to plan, coordinate, and communicate capital improvement projects.

[? Learn More](#)



Connect with Customers

A collection of maps and apps that provide detailed information about maintenance activities, and empower customers to improve the quality of water utility services in their community.

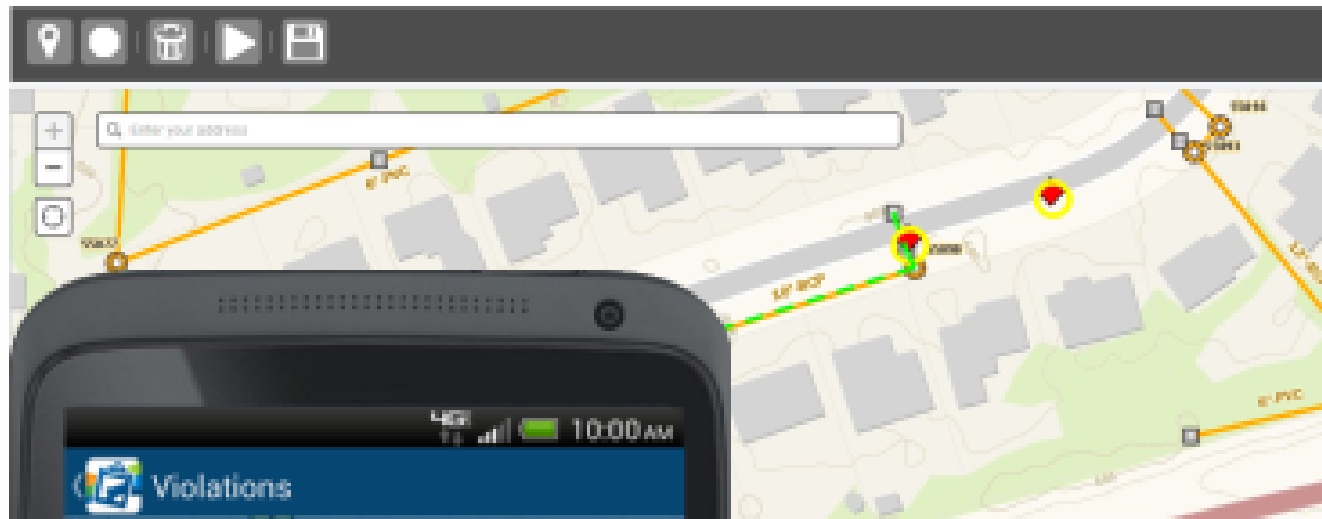
[!\[\]\(c3d993ca47bfe2a953c700506ce31fa0_img.jpg\) Learn More](#)



Optimize Field Operations

A collection of maps and apps that can be used by field operations and maintenance staff in a water utility to gain access to utility information and conduct inspections.

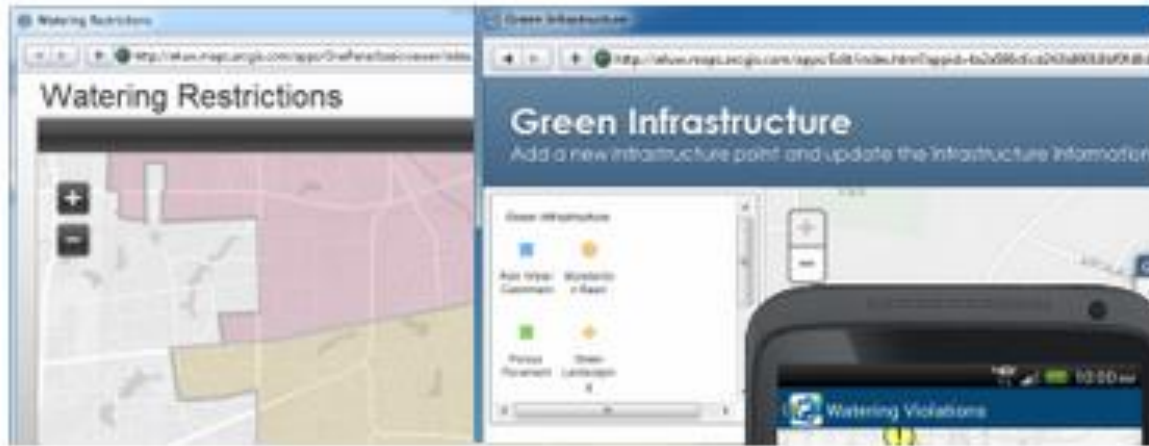
[!\[\]\(0f848bbd71cef6b345273b16f905912a_img.jpg\) Learn More](#)



Ensure Stormwater Compliance

A collection of maps and apps that can be used to ensure compliance with MS4 and other stormwater regulations.

[!\[\]\(cbe80b694ebd74fcfe136a095b608235_img.jpg\) Learn More](#)



Improve Water Conservation

A collection of maps and apps used to promote public water restrictions, capture water violations, and enhance green infrastructure programs.

[? Learn More](#)



Visualize System Data

A collection of maps and apps used to visualize information managed in a utility's diverse business systems.

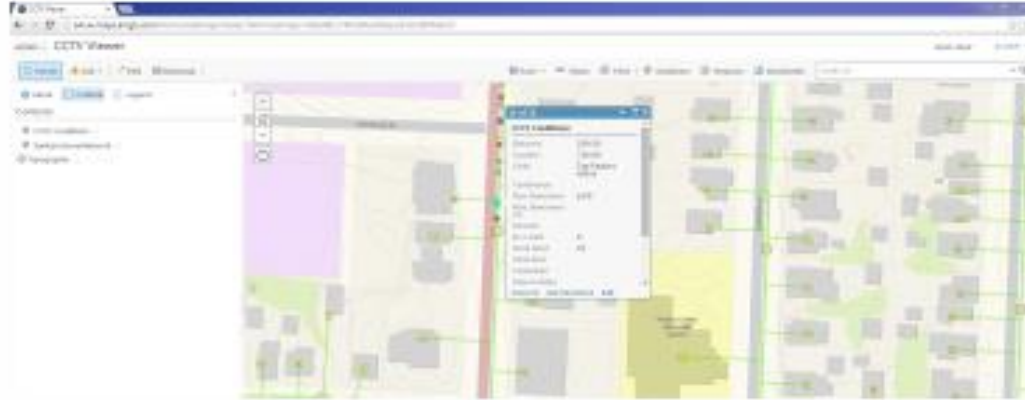
[!\[\]\(e2376d476d06eb31946dc01a69a4403a_img.jpg\) Learn More](#)



Generate Water Reports

The Water Inventory Report application can be used to create map-based reports for your service area.

- [Download](#)
- [Try it Now](#)
- [Learn More](#)



View CCTV Observations

The CCTV Processor map can be used to view CCTV condition data and associated videos and photos.

[!\[\]\(9dfdaff1d86ba3c1f8353b4d1b61b8c5_img.jpg\) Download](#)

[!\[\]\(83f22ed94ec5517769dd76d702c6bfd8_img.jpg\) Try it Now](#)

[!\[\]\(8d0f0e0fe25b320c33272c52aec1fbca_img.jpg\) Learn More](#)



YOU
ARE WORTH IT



The text 'YOU ARE WORTH IT' is displayed in large, bold, blue capital letters. The letter 'O' in 'YOU' is replaced by a circular image of a person's silhouette jumping with arms raised against a vibrant sunset sky. The background of the text is a sunset over water.

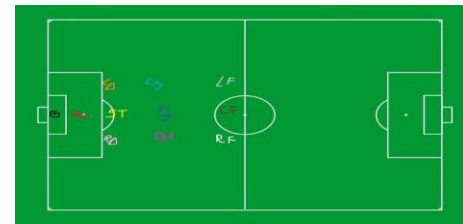
Name	Type
Address	File Geodatabase Feature Dataset
AdministrativeArea	File Geodatabase Feature Dataset
AssessmentInformation	File Geodatabase Feature Dataset
CadastralReference	File Geodatabase Feature Dataset
CapitalPlanning	File Geodatabase Feature Dataset
CitizenService	File Geodatabase Feature Dataset
Demography	File Geodatabase Feature Dataset
ElectionAdministration	File Geodatabase Feature Dataset
ElectionResults	File Geodatabase Feature Dataset
Elevation	File Geodatabase Feature Dataset
EmergencyOperations	File Geodatabase Feature Dataset
ExecutiveReporting	File Geodatabase Feature Dataset
FacilitiesStreets	File Geodatabase Feature Dataset
FieldCrew	File Geodatabase Feature Dataset
InfrastructureOperations	File Geodatabase Feature Dataset

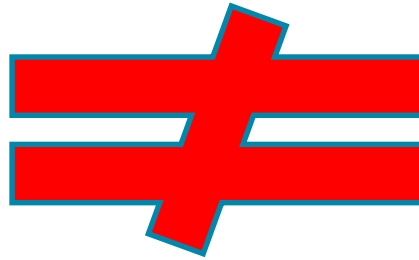


Local Government Information Model

Stormwater	File Geodatabase Feature Dataset
Telemetry	File Geodatabase Feature Dataset
WaterDistribution	File Geodatabase Feature Dataset
AnimalComplaints	File Geodatabase Raster Dataset
BuildingFloor__ATTACH	File Geodatabase Table
BuildingFloor__ATTACHREL	File Geodatabase Relationship Class
BuildingPhotoLocation__ATTACH	File Geodatabase Table
BuildingPhotoLocation__ATTACHREL	File Geodatabase Relationship Class
CatchbasinInspection__ATTACH	File Geodatabase Table
Census2010SummaryFile1	File Geodatabase Table
CitizenContactInfo	File Geodatabase Table
ConsumptionInfo	File Geodatabase Table
DamageCommercialBuilding__ATTACH	File Geodatabase Table
DamageCommercialBuilding__ATTACHREL	File Geodatabase Relationship Class
DamagePublicFacility__ATTACH	File Geodatabase Table
DamagePublicFacility__ATTACHREL	File Geodatabase Relationship Class
DamageResidentialBuilding__ATTACH	File Geodatabase Table
DamageResidentialBuilding__ATTACHREL	File Geodatabase Relationship Class
DynamicValue	File Geodatabase Table
EmployeeInfo	File Geodatabase Table
FacilitySitePoint__ATTACH	File Geodatabase Table
FacilitySitePoint__ATTACHREL	File Geodatabase Relationship Class
FiveMeterHillshade	File Geodatabase Raster Dataset
FiveMeterSurface	File Geodatabase Raster Dataset
FloodImpactPlan	File Geodatabase Table







4 Sides view



28,515



8,000

20,500

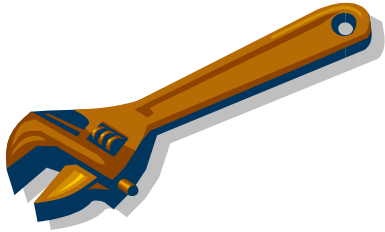
15

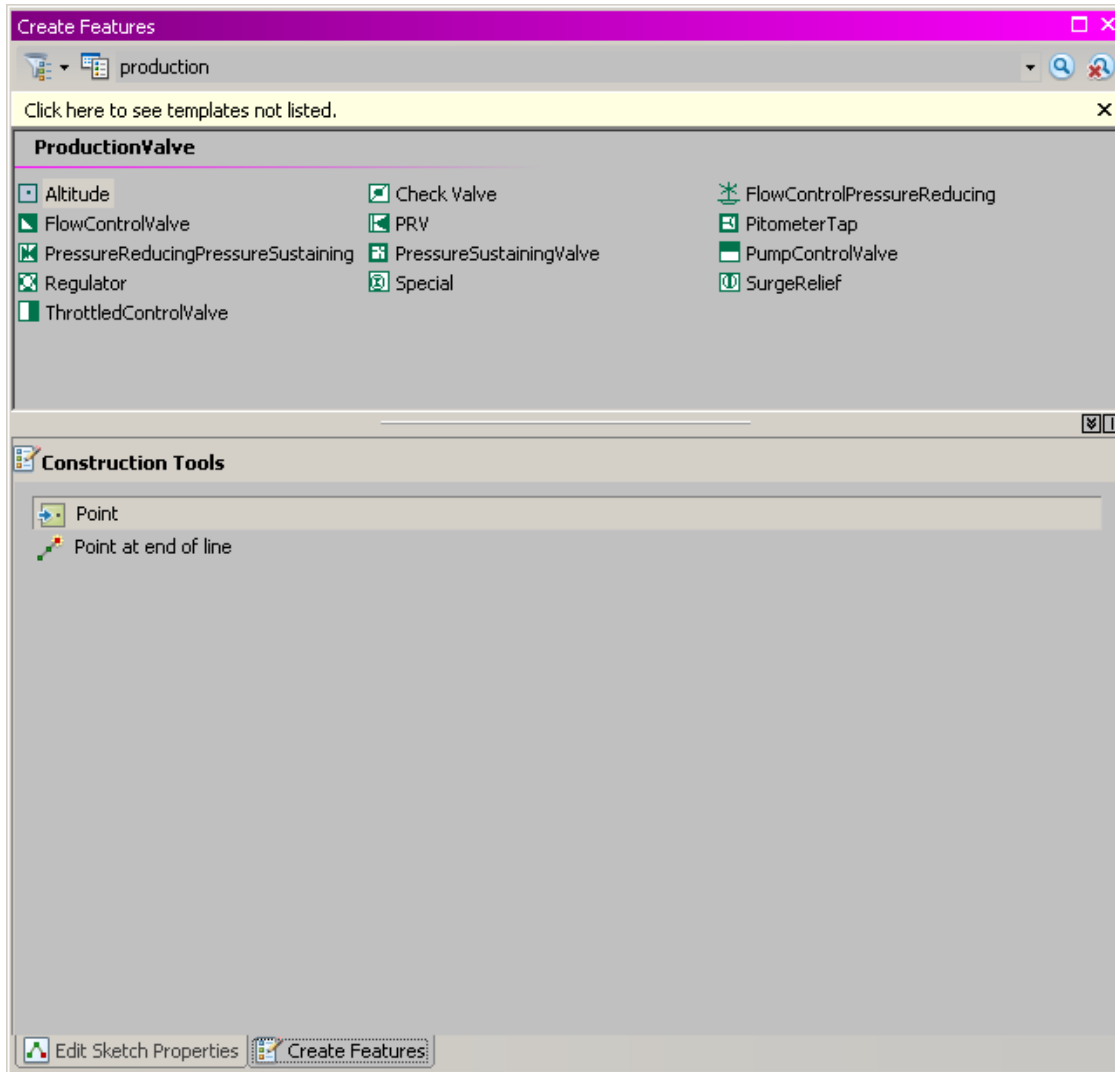
Domains

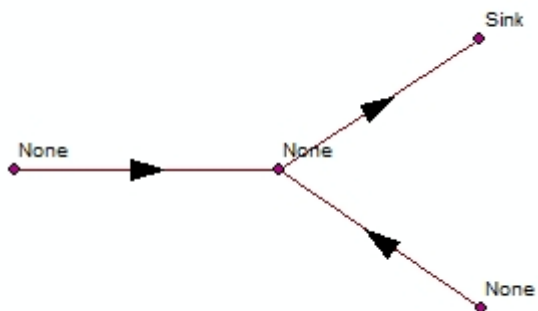
Subtypes

Field Alias









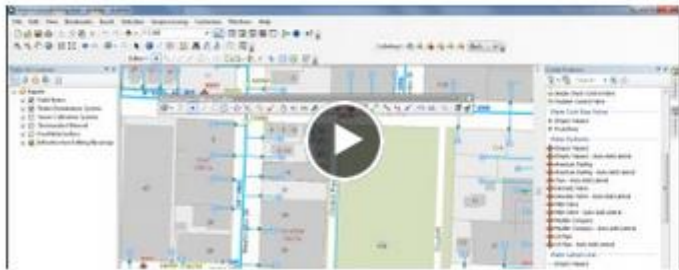
The screenshot shows the ArcMap interface with a topology error. The main map area displays several light green polygons, with some overlapping areas highlighted in red. The Error Inspector window at the bottom shows the following table of errors:

Rule Type	Class 1	Class 2	Shape	Feature 1	Feature 2	Exception
Must Not Overlap	test_1		Polygon	5	7	False
Must Not Overlap	test_1		Polygon	1	2	False
Must Not Overlap	test_1		Polygon	3	4	False
Must Not Overlap	test_1		Polygon	2	4	False

A context menu is open over the map, showing options like 'Zoom To', 'Pan To', 'Select Features', 'Show Rule Description...', 'Subtract', 'Merge...', 'Create Feature...', 'Mark as Exception', and 'Mark as Error'. A tooltip for the 'Subtract' option explains: 'Remove the portion of the feature that is causing the error. For most topology rules, this fix can be applied to one or more errors.'

Maintain Utility Assets

A collection of editing maps used to maintain comprehensive water distribution, sewer, and storm water records.



Maintain Utility Networks

The Water Utility Network Editing map can be used by mapping technicians to maintain comprehensive water distribution, sewer, and storm water records.

 [Download](#)

 [Learn More](#)



Increase Quality of Utility Data

Data Reviewer for Water Utilities is a preconfigured set of jobs for performing quality control on water, sewer, and storm water data.

 [Download](#)

 [Learn More](#)





8" Diameter
910 Main St
Boise City
Southwest Fire District



8" Diameter



910 Main St
Boise City
Southwest Fire District



≠



Data Reviewer for Water Utilities



Build The Map

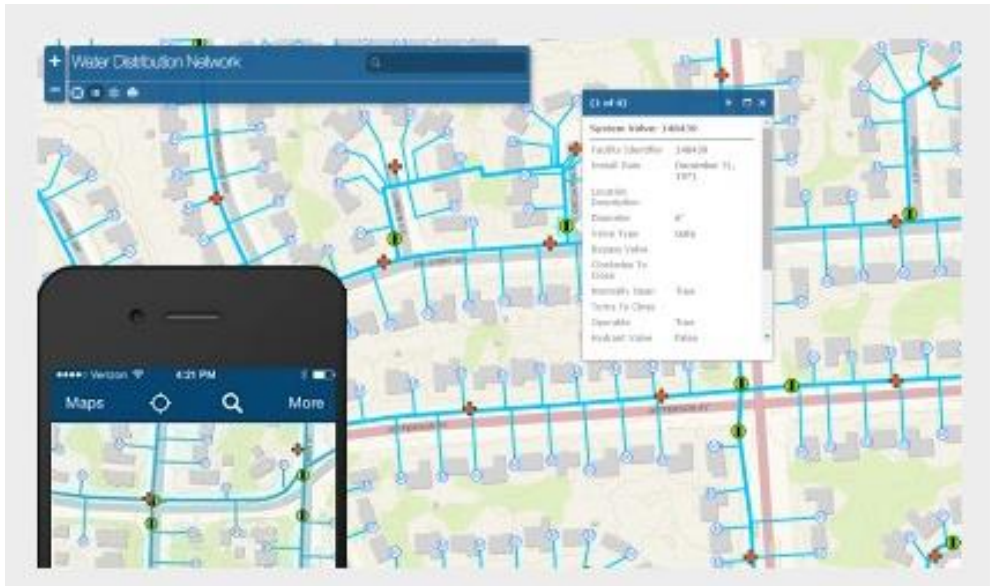


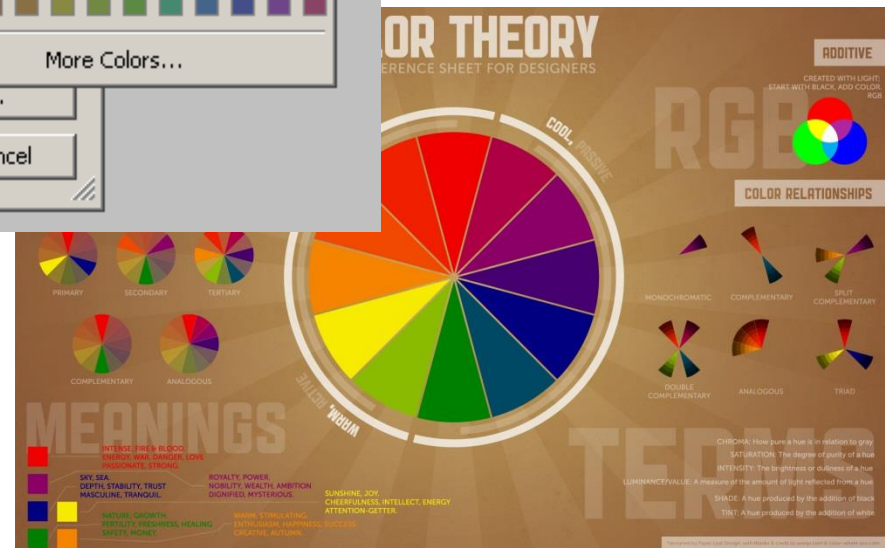
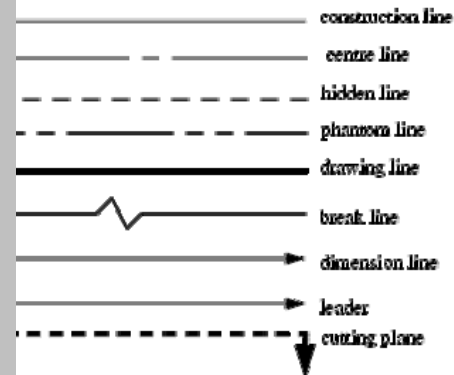
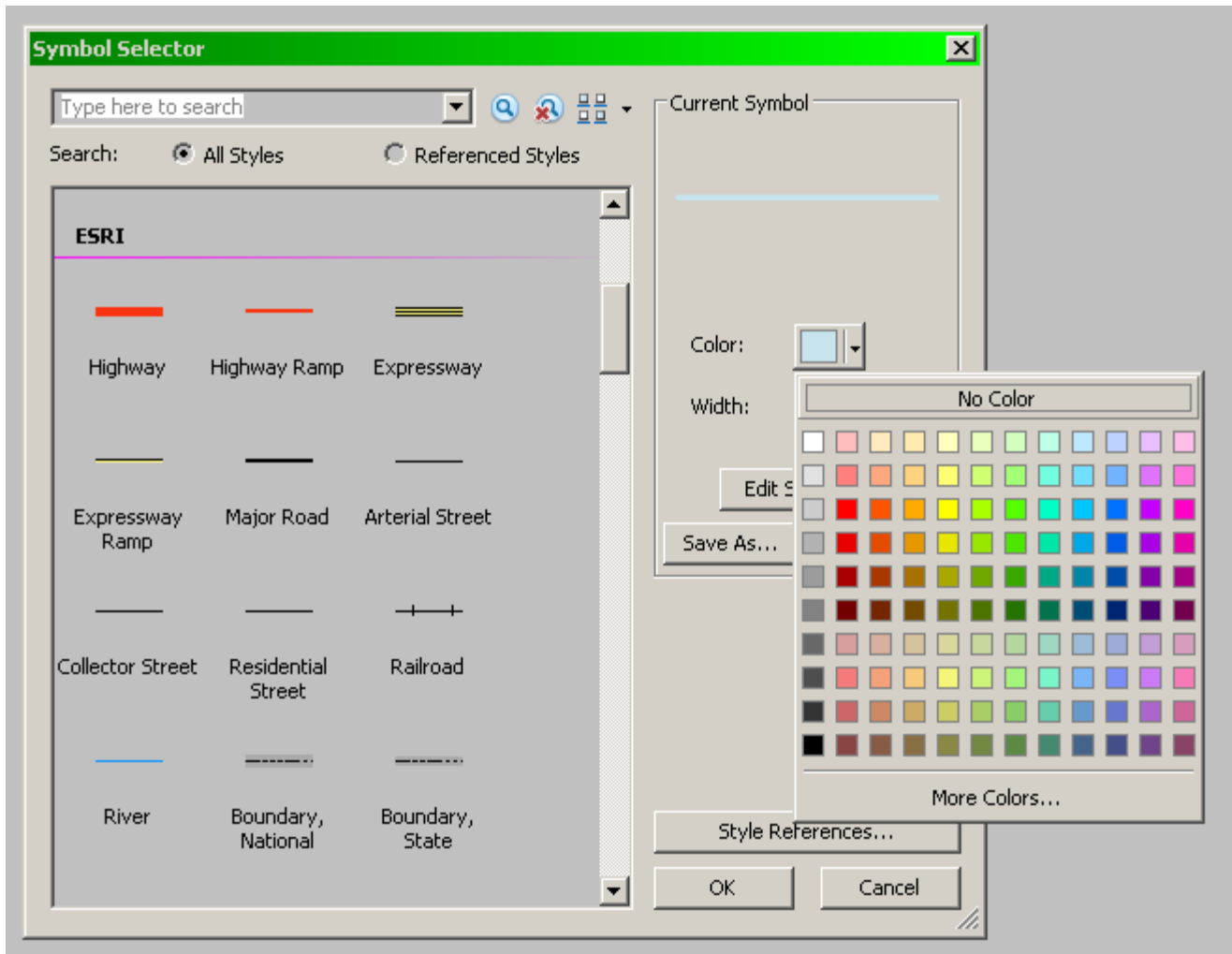
Table of Contents

- Water Distribution System
 - GPS Points
 - Valve Activities
 - Water Network
 - Hydrant
 - ProductionValve
 - HydrantValve
 - NetworkValve
 - System Valves
 - Meter Box
 - Restraint
 - HydrantBranchLine
 - Service Leader Line
 - Main Lines
 - MasterServiceLine
 - Water Facilities
 - Block
 - Hydrant
 - HydrantValve
 - ProductionValve
 - NetworkValve
 - System Valves
 - SamplingStation
 - Main Lines
 - Facilities
 - City
 - Facilities
 - SamplingStation
 - Water Support Features
 - Abandon Features
 - Main_Change_Point
 - AbandonedLine
 - AbandonedPoint
 - CommunicationLink
 - Casing
 - Easements
 - Facilities
 - SamplingStation
 - Confined Space
 - Service_Note_Leaders
 - Main_Note_Leaders
 - Building_Footprints_Roads
 - Text Anno

- 1) The Cause
- 2) The Proof and Effects
- 3) Solutions!
- 4) Informative Video
- 5) World Implication
- 6) Interesting Stuff to look at!
- 7) Citations

Table Of Contents

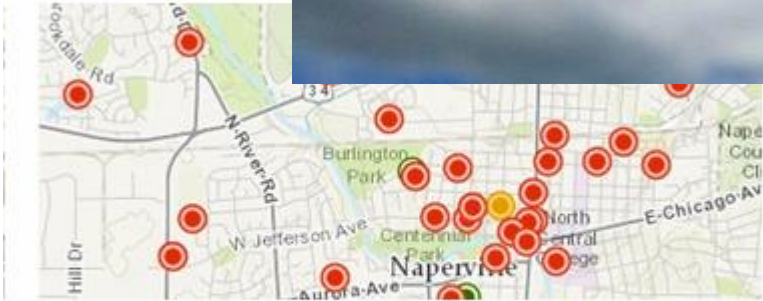
- Campus
 - 140
 - 280
 - 560
 - 1K
 - 2K
 - 4K
 - 9K
- City
 - 1K
 - 2K
 - 4K
 - 9K
 - 18K
 - 36K
 - 72K
 - 144K
 - 288K



Create, Share, and Use GIS Maps

Build a Webmap

Consume a WebMap



Collect data



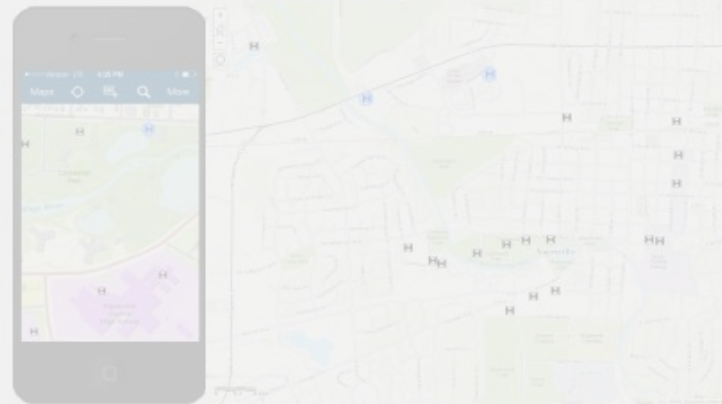
Create and share a map

Backflow Inspection

[Home](#) [Get Started](#)

Overview

To comply with the EPA's Safe Drinking Water Act, backflow prevention devices need to be inspected annually to ensure the infrastructure is working properly. If a device does not pass the set standards, repairs or replacement is required. Because of these requirements, a utility needs to record backflow prevention inspections and the infrastructure needing repairs.



Backflow Inspection is a configuration of ArcGIS Online and the Collector for ArcGIS application for field crews to collect data on a smartphone or tablet device. By creating a map view of inspections, a utility is able to view all backflow prevention devices within the service area and inspection reports.

[REQUIREMENTS](#)

[WHAT YOU GET](#)

[WHAT'S NEW](#)

[DOWNLOAD](#)

[TRY IT NOW](#)



Water Utility Mobile Map

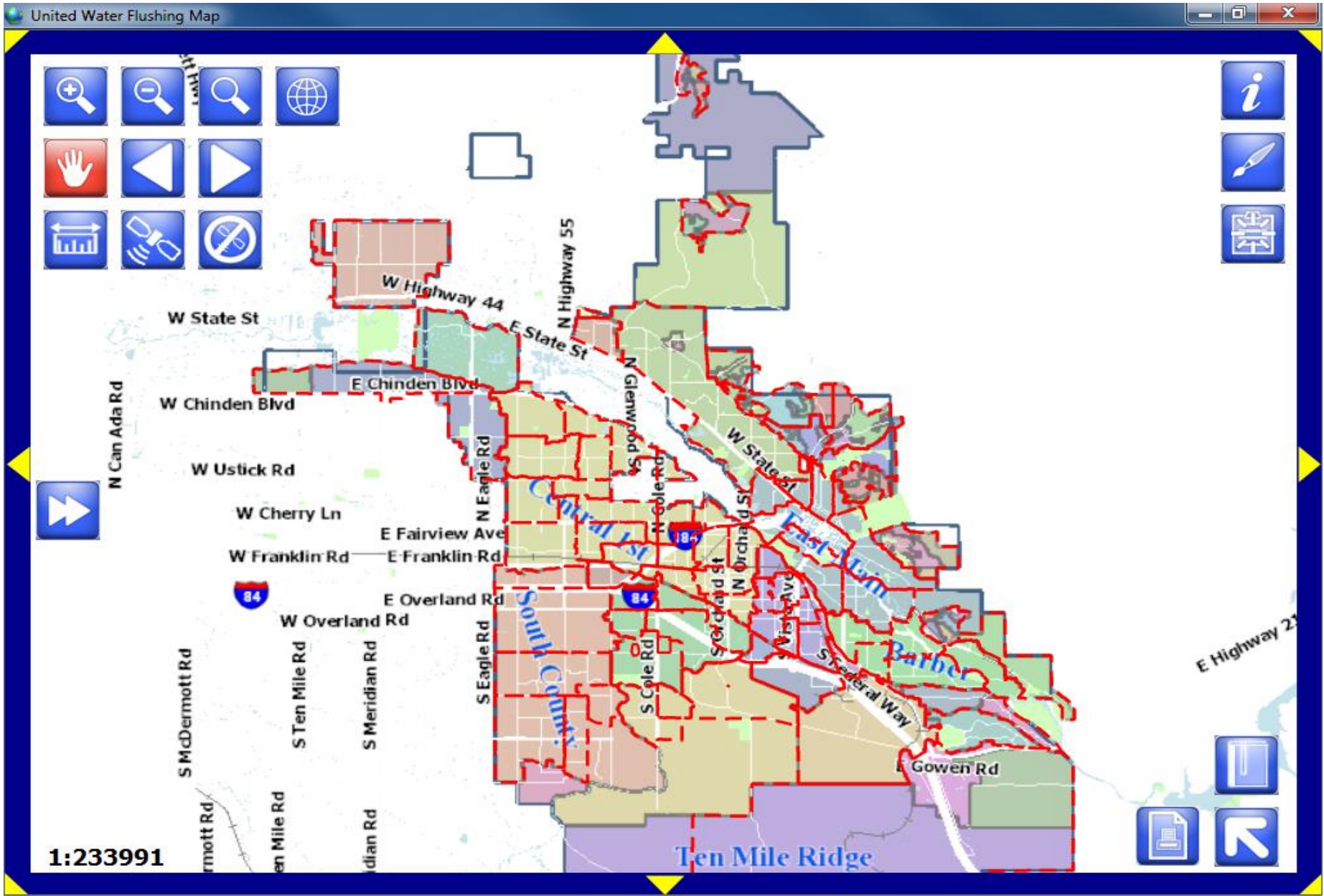
Home Get Started User Guide Configure

Overview

The Water Utility Mobile Map is an ArcGIS for Windows Mobile based application for use by field operations and maintenance staff to gain access to utility information from the field. This application allows staff to locate a specific assets and intersections, create field notes, and inspect assets. It also provides a series of information windows to visualize content and update the status of work in the field.



The application can be used in a disconnected or connected network environment to view detailed information about water, sewer, and stormwater infrastructure, locate assets, create inspections, and enter field notes. The mobile map also provides a side control with a series of panels with additional capabilities.



Get Started

Overview

Publish basemaps

Publish services

Extract application

Configure application



```
<?xml version="1.0" ?>
<MobileConfig xmlns:xsi="http://www.w3.org/2001/XMLSchema-instance" xmlns:xsd="http://www.w3.org/2001/XMLSchema">
  <MobileMapConfig>
    <ApplicationSettings>
      <SplashLabel>United Water Flushing Map</SplashLabel>
      <SplashImage>UW_logo_PMS.jpg</SplashImage>
      <AppImage>123.ico</AppImage>
      <FontSize>10</FontSize>
      <SideBarControl>False</SideBarControl>
      <CopyrightText>Esri, Inc.</CopyrightText>
      <VersionInfo>Version: 10.2.0.6, 12-18-2014</VersionInfo>
      <ZoomExtent>2400</ZoomExtent>
      <MultiLineThreshold Threshold="125" SizeFactor="3" />
      <MapExport visible="true" mailClient="Outlook" textToInclude="" />
    </ApplicationSettings>
    <UIComponents>
      <LayerNotFound>The layer with the name of {0} was not found</LayerNotFound>
      <FieldNotFound>The field with name {0} was not found in layer {1}</FieldNotFound>
      <YesText>Yes</YesText>
      <NoText>No</NoText>
    </UIComponents>
  </MobileMapConfig>
</MobileConfig>
```

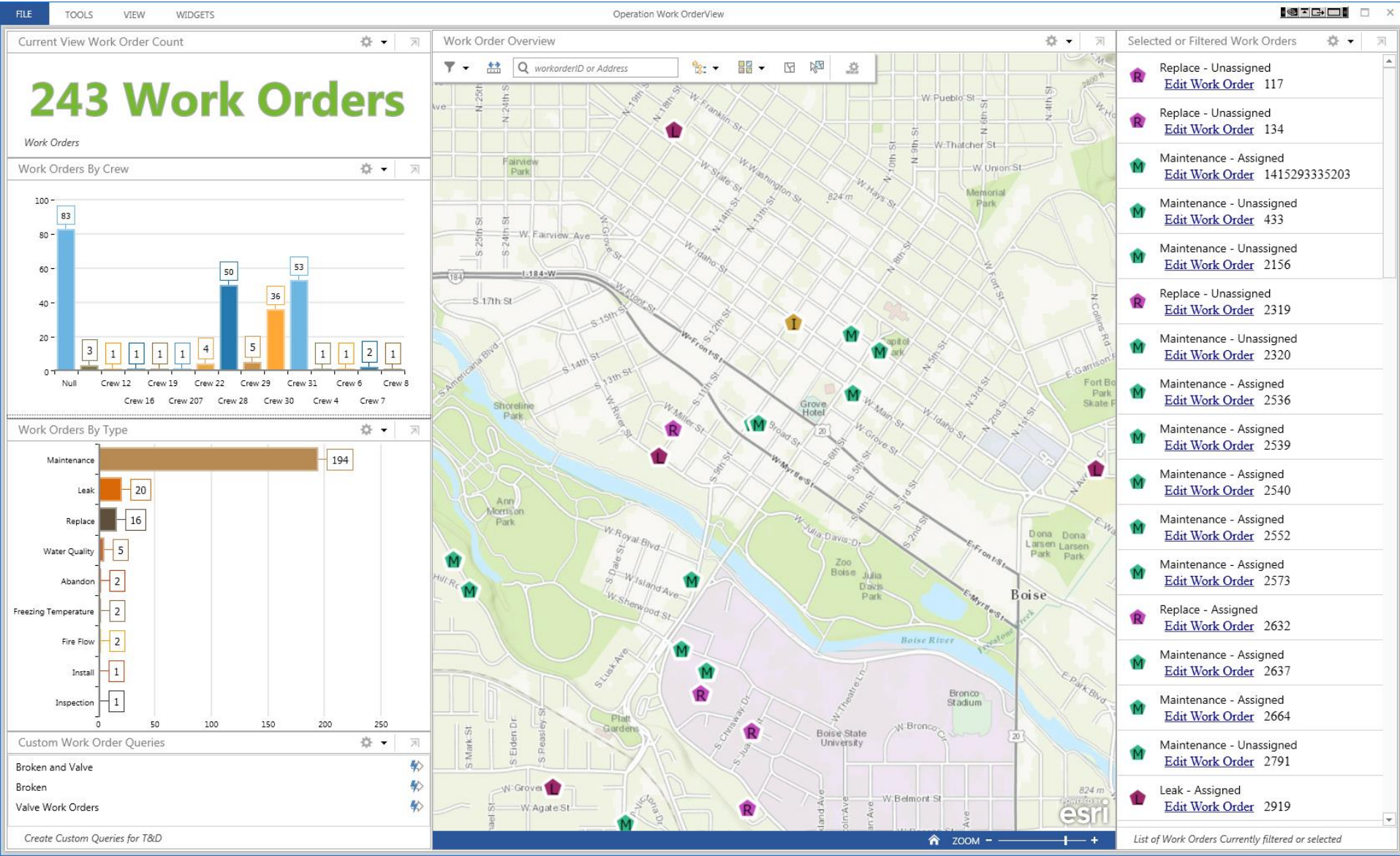
```
MobileMapConfig.xml - Notepad
File Edit Format View Help
<?xml version="1.0" ?>
<MobileConfig xmlns:xsi="http://www.w3.org/2001/XMLSchema-instance" xmlns:xsd="http://www.w3.org/2001/XMLSchema">
  <MobileMapConfig>
    <ApplicationSettings>
      <SplashLabel> </SplashLabel>
      <SplashImage>Uw_logo_PMS.jpg</SplashImage>
      <AppImage>123.ico</AppImage>
      <FontSize>10</FontSize>
      <SideBarControl>False</SideBarControl>
      <CopyrightText>Esri, Inc.</CopyrightText>
      <VersionInfo>version: 10.2.0.2, 1-17-2014</VersionInfo>
      <ZoomExtent>600</ZoomExtent>
      <MultiLineThreshold Threshold="125" sizeFactor="3" />
      <MapExport visible="true" mailClient="outlook" textToInclude="" />
    </ApplicationSettings>
    <UIComponents>
      <LayerNotFound>The layer with the name of {0} was not found</LayerNotFound>
      <FieldNotFound>The field with name {0} was not found in layer {1}</FieldNotFound>
      <YesText>Yes</YesText>
      <NoText>No</NoText>
    </UIComponents>
  </MobileMapConfig>
</MobileConfig>
```

An overview of the Mobile toolbox

Create
Mobile
Cache tool

Synchronize
Mobile
Cache tool

Dashboard



Data Model

Maps

Configure

Share

