

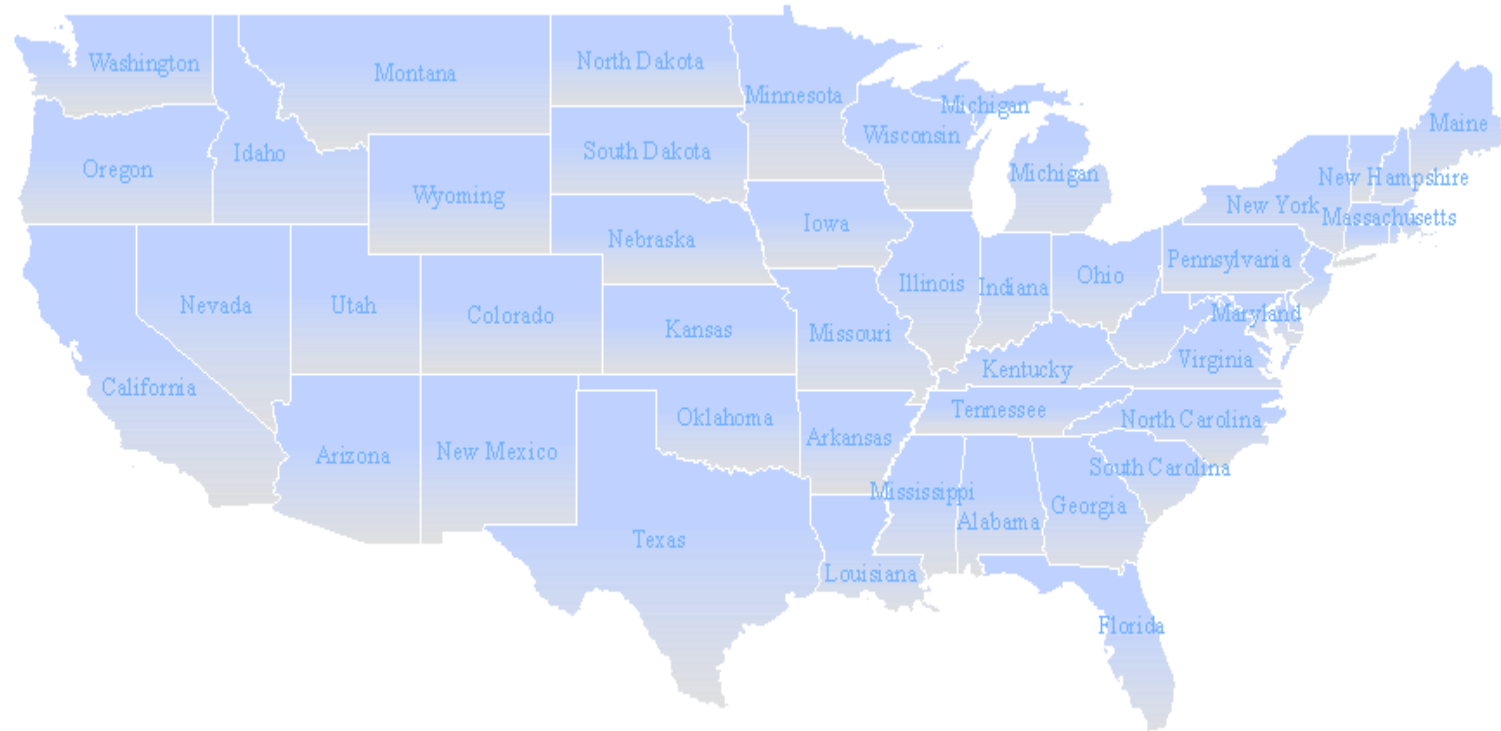
Customer Engagement

The many ways to use GIS for effective information communication

Data Rich Water Systems



Our Customers



Valuable Information?



Valuable Information?



Roadblocks



! Data entry can very be slow!



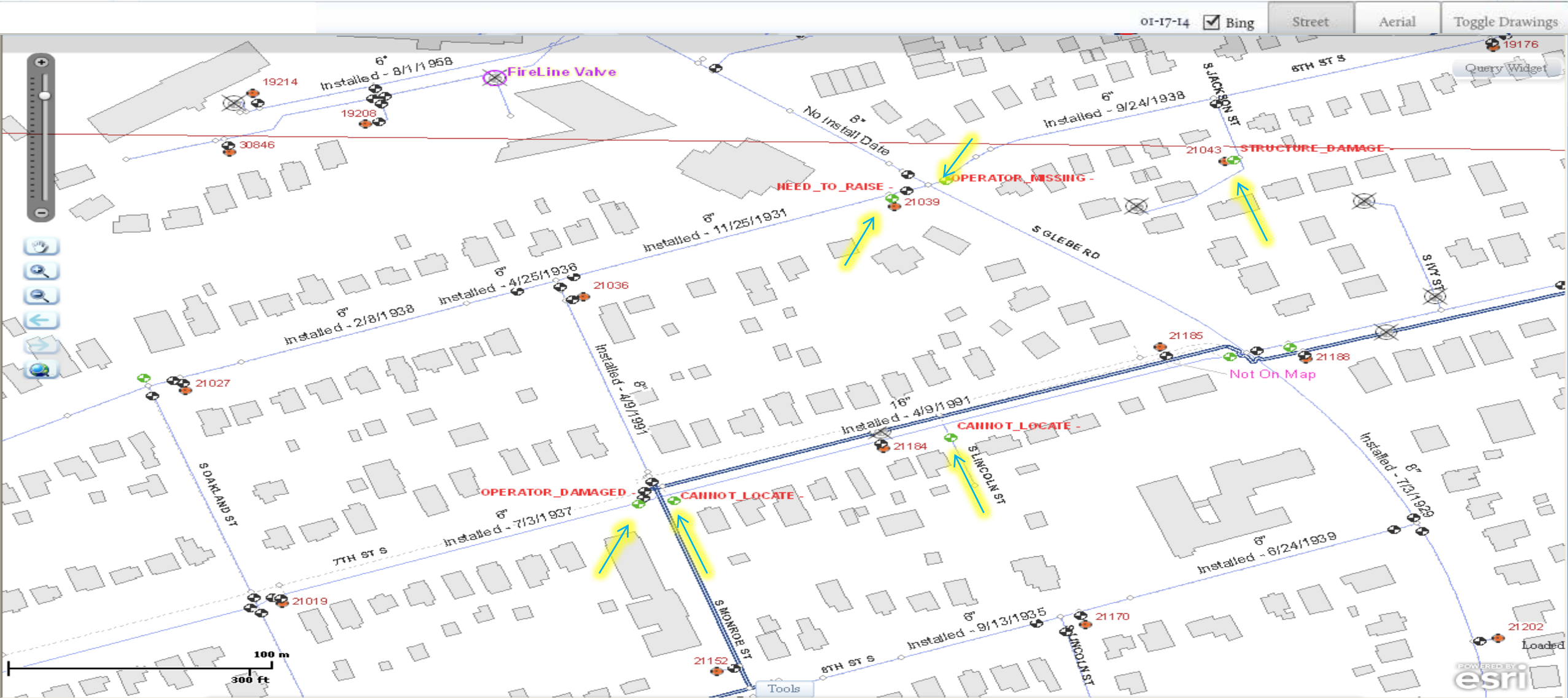
GIS Technology

The Solution is...

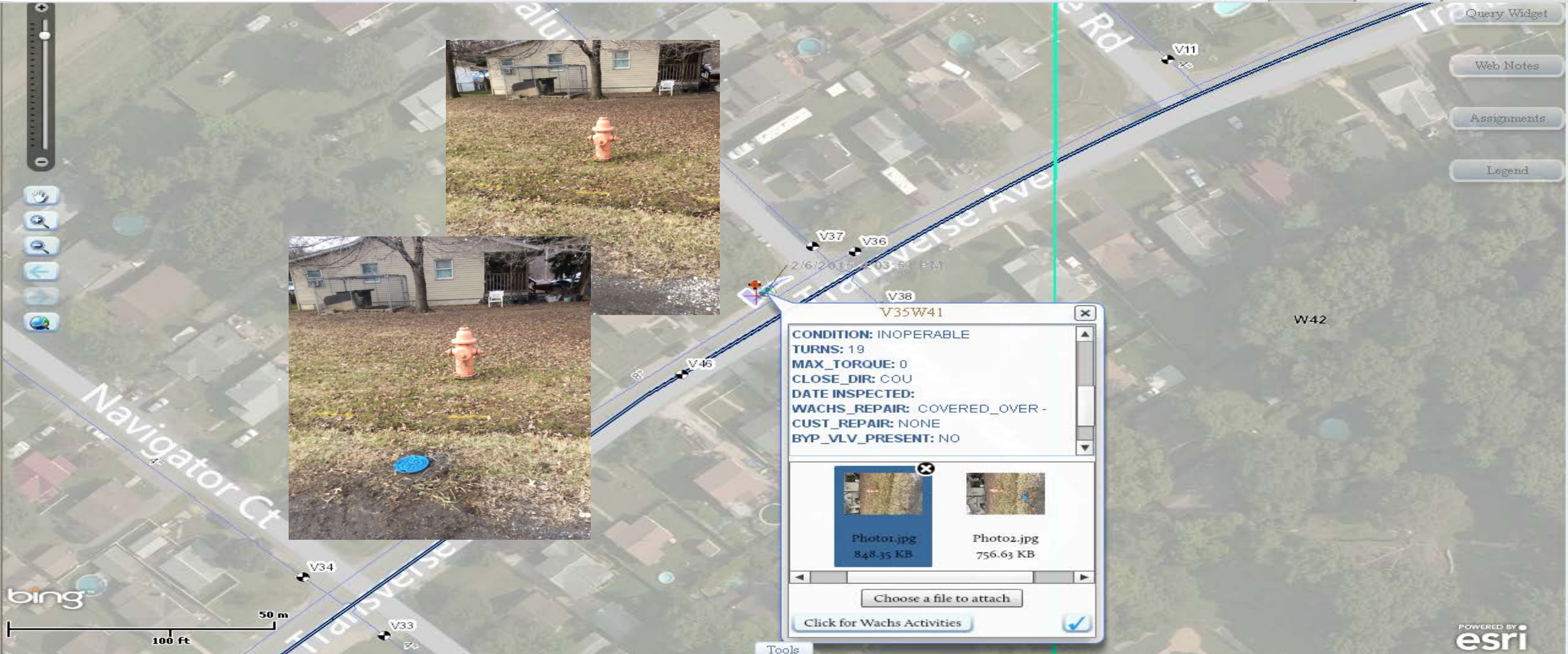
- Replicated Databases
- ArcGIS Online
- Project Tracker
(ArcGIS Runtime)



ArcGIS To The Rescue!



ArcGIS To The Rescue!



V35W41

CONDITION: INOPERABLE
TURNS: 19
MAX_TORQUE: 0
CLOSE_DIR: COU
DATE INSPECTED: 2/6/2015 10:51 AM
WACHS_REPAIR: COVERED_OVER -
CUST_REPAIR: NONE
BYP_VLV_PRESENT: NO

Photo1.jpg 848.35 KB
Photo2.jpg 756.63 KB

Choose a file to attach
Click for Wachs Activities

ArcGIS To The Rescue!

Project Tracker
Wachs LDI Tracker

Home News Solutions Services

Wachs Water SERVICES

Defects Other Survey Points Address Mileage Check

Bing Street Aerial

500m

POWERED BY esri

Customer Engagement

The many ways to use GIS for effective information communication

Information Communicated!

Image Credits			
<i>Hydrant 1</i>	http://en.wikipedia.org/wiki/File:Fire_hydrant_knocked_over.jpg	<i>Old Pumping Station</i>	http://www.phillywatersheds.org/sites/default/files/rox2_1962.jpg
<i>Hydrant 2</i>	http://4.bp.blogspot.com/-nOsmIpOaUMY/U-4uL_HIsol/AAAAAAAAACzc/ArSt64TCxsk/s1600/fireh.JPG	<i>Old Mains</i>	http://www.phillywatersheds.org/sites/default/files/roxborough_granville.jpg
<i>Hydrant 3</i>	http://mentalfloss.com/article/30489/12-geeky-fire-hydrants	<i>Superman</i>	http://img2.wikia.nocookie.net/__cb20140121174612/marvel_dc/images/0/05/Adventures_of_Superman_Vol_1_596_Textless.jpg
<i>Water Loss</i>	http://www.sfexaminer.com/imager/a-hit-and-run-driver-knocked-over-a-fire-hydrant-in-the-south-of-market-are/b/original/2307970/4a1b/FirePlugDown.jpg	<i>Water Network 1</i>	http://solutions.arcgis.com/shared/img/wtr-CIPCostEstimate.jpg
<i>Dirty Water</i>	http://www.needhamma.gov/images/pages/N3075/Dirty%20Water.JPG	<i>Water Network 2</i>	http://www.jonesedmunds.com/wp-content/uploads/2014/06/MelbourneGIS.jpg
<i>File Archives</i>	http://upload.wikimedia.org/wikipedia/commons/a/a2/CA_State_Archives_Boxes.jpg		
<i>Water Men</i>	http://www.phillywatersheds.org/sites/default/files2/a_o.jpg		

