

# PASSING VALUES AUTOMATICALLY TO FIELD COLLECTION FORMS



2015 ESRI Water Conference  
February 11, 2015  
Prepared By  
Dennis Gilbertson, GISP

# PASSING VALUES TO FIELD COLLECTION FORMS

**RJN Group, Inc.** is a professional engineering and field services firm providing sustainable collection system solutions for infrastructure owners.

Established in 1975, RJN serves a wide range of clients including municipal, county, sanitary districts, state and federal agencies. The outcome of RJN projects is improved integrity, service life, and performance of today's infrastructure systems.

RJN Group is headquartered in Wheaton, IL with offices in Dallas, TX, Vienna, VA, Baltimore, MD, and Tulsa, OK along with many regional offices.



Dennis Gilbertson, GISP  
GIS Project Manager  
18 Years GIS Experience  
Specialties: Local Government ,  
Asset Management, GIS Databases,  
and Mobile Applications

# PASSING VALUES TO FIELD COLLECTION FORMS

Background:

- Field Crews collecting SSES inspection / testing data.
- Mobile device applications iFormBuilder and ESRI's Explorer or Collector for ArcGIS
- Use existing spatial data in Explorer app to auto-populate inspection forms in iForm app.



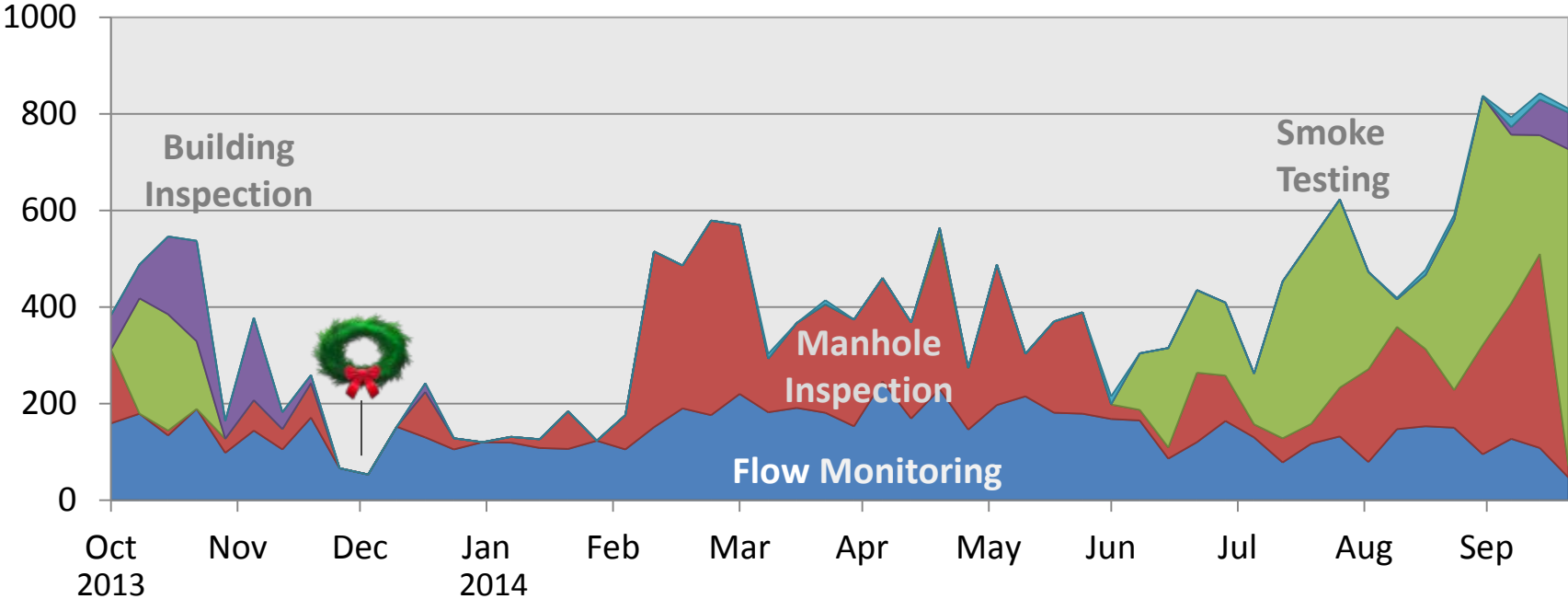
# PASSING VALUES TO FIELD COLLECTION FORMS

Why Do This?:

- Improve the efficiency of Field Crew workers
- Collect reliable data to deliver reputable solutions to clients
- Reduces redundant data collection and preserves data integrity. Let me “Preach to the Choir”
- RJN internal Project Management software (RPM)

# PASSING VALUES TO FIELD COLLECTION FORMS

## Field Collection Forms Generated per Week



# PASSING VALUES TO FIELD COLLECTION FORMS

## How Did We Accomplish This?:

- Custom “Pop-up” created in AGO
- Insert hyperlink to take attributes from spatial data and apply to new inspection record in iForm.

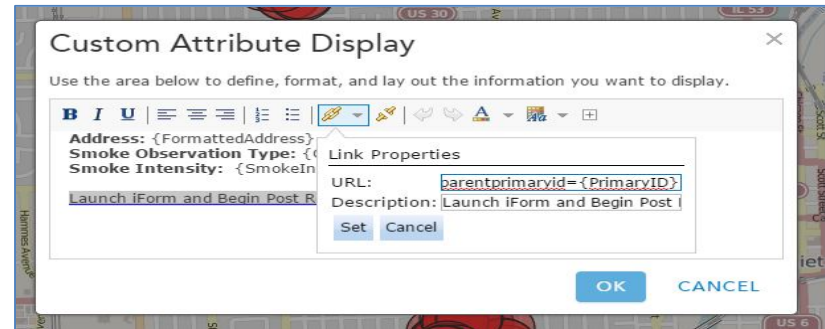


Pop-up Contents

Display: A custom attribute display

**CONFIGURE**

[Configure Attributes](#)



Custom Attribute Display

Use the area below to define, format, and lay out the information you want to display.

**B I U** | [Text formatting icons] | [Link icon]

Address: {FormattedAddress}  
Smoke Observation Type: {  
Smoke Intensity: {SmokeIn

[Launch iForm and Begin Post R](#)

Link Properties

URL: parentprimaryid={PrimaryID}

Description: Launch iForm and Begin Post I

**Set** Cancel

OK CANCEL

# PASSING VALUES TO FIELD COLLECTION FORMS

## Create the URL:

- “Link Properties” for the “Pop-up” are set with the following URL

Launch iForm App      iForm Table ID      Create New Record      iForm Table Field Name

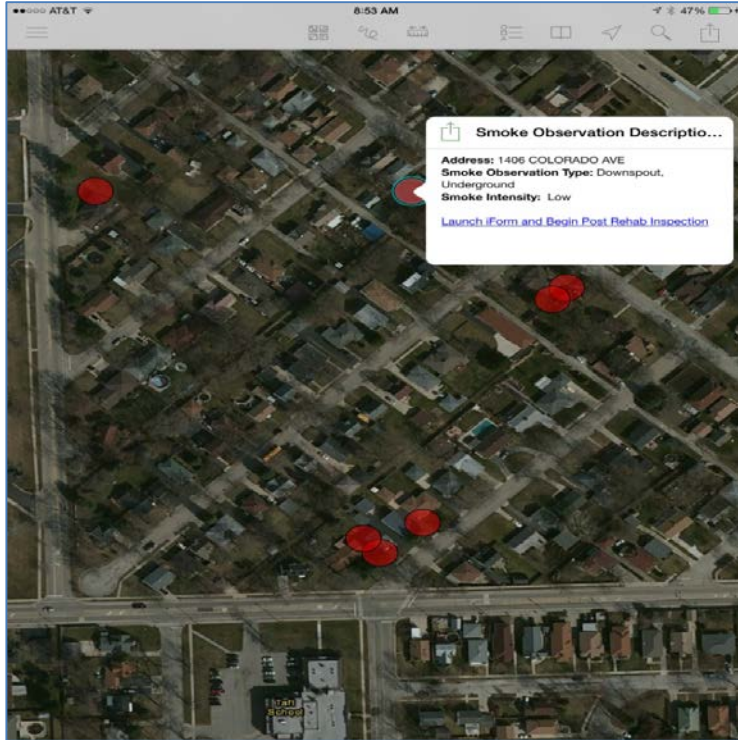
```

i Form: //?pageI d=3325674&acti on=new&streetnumber={ AddNum
} &streetname={ STREET_NAM} &l ati tude={ Y} &l ongi tude={ X}
&forei gni d={ Gl obal I D} &proj ectpri maryi d={ Proj ectPri ma
ryI D} &parentabl e={ ParentTabl e} &parentpri maryi d={ Pri
maryI D}
  
```

Feature Class  
 Field Name



# PASSING VALUES TO FIELD COLLECTION FORMS



A screenshot of a mobile application interface showing a 'Post-Rehab Inspection' form. The form has a blue header with 'Cancel' on the left and 'Save' on the right. The form fields are as follows:

- Address:** 1406 COLORADO AVE
- Change Address to... (as needed):** >
- Violation:** Downspout, Underground
- Change Violation to... (as needed):** >
- Violation Corrected \*:** A table with two columns: 'No' and 'Yes'.
- Photos:** >
- Comments:** >

A 'Done' button is located at the bottom of the form.



# PASSING VALUES TO FIELD COLLECTION FORMS

## Results / Lessons Learned:

- Success
- Human element still exists
- Questions?



Dennis Gilbertson, GISP

GIS Project Manager

RJN Group, Inc.

630-682-4700

[dgilbertson@rjnmail.com](mailto:dgilbertson@rjnmail.com)