

Esri Developer Summit

March 26–29, 2012 | Palm Springs, California

esri.com/events/devsummit



Configuring and Customizing ArcGIS for Local Government

Scott Oppmann

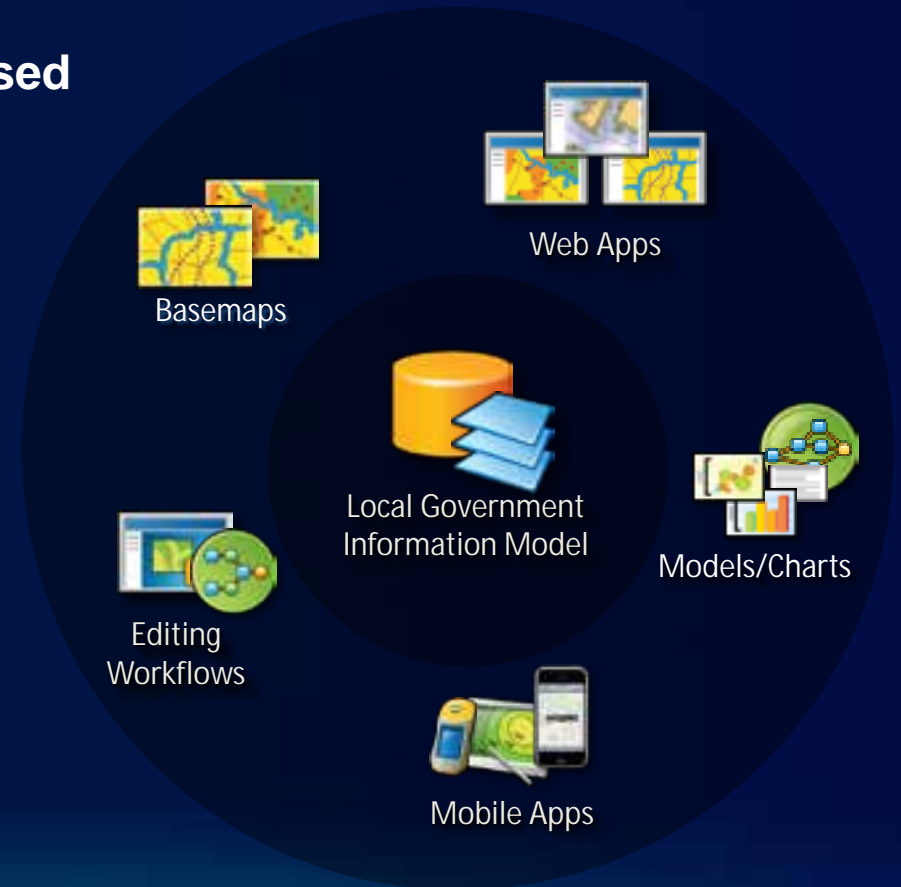
Lindsay Thomas



ArcGIS for Local Government

A product for Esri's local government customers

- **A series of useful maps and apps focused on local government work**
 - Organized into modules
 - Extensible, configurable
 - A foundation for Partner solutions
- **An online community**
 - Best Practices / Implementation Support
- **A network of Esri Services and Partner offerings**
 - Help users implement, sustain and enhance



.....Available on-premise or in the cloud

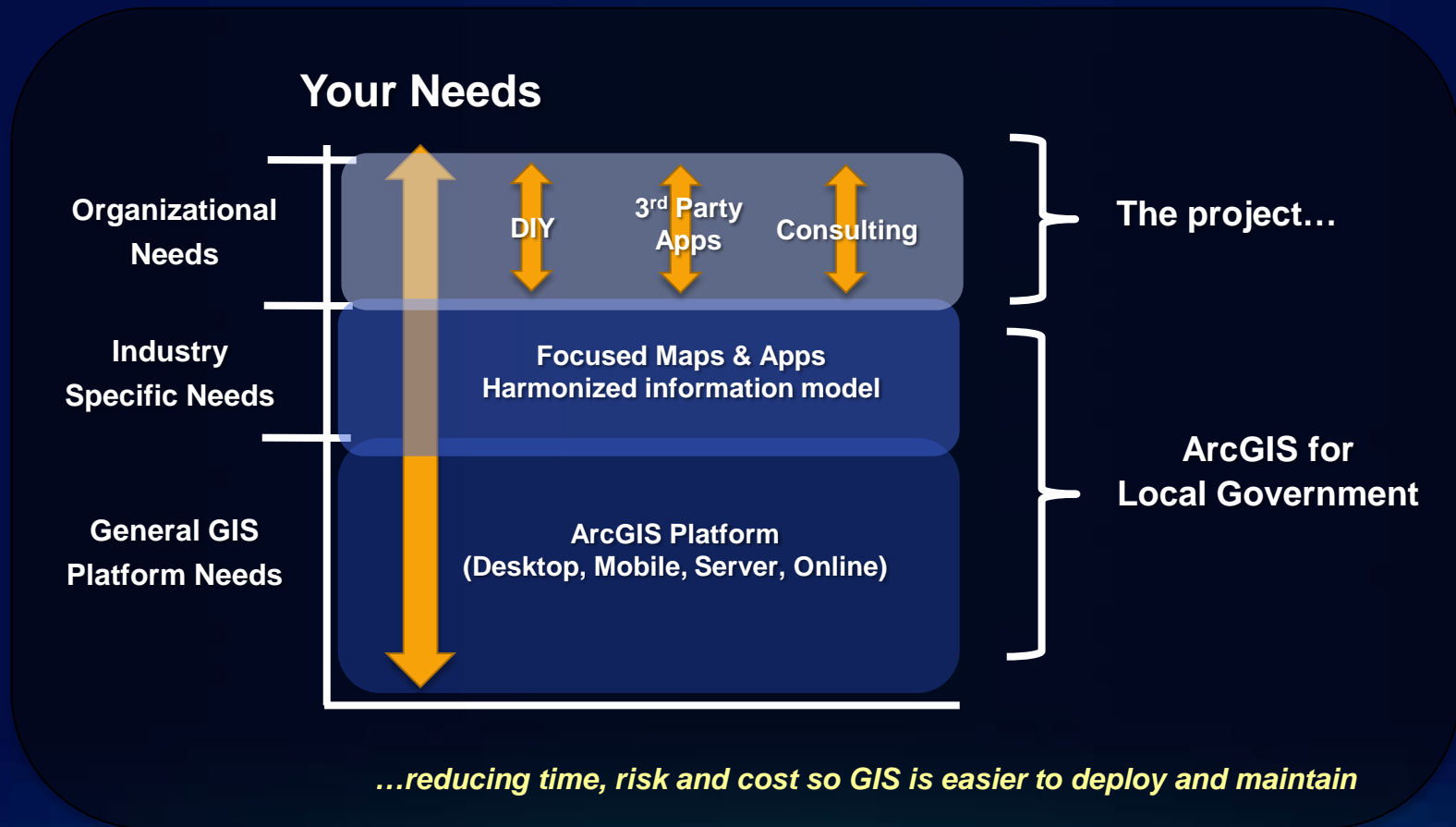
Our Mission

Help increase the value of GIS in local government organizations

- **Make it easier to deploy ArcGIS**
 - Deliver applications quickly throughout your organization
 - Stay current with future releases / avoid legacy technology
 - Create a platform of geospatial data that can be leveraged by many
- **Address common constraints in local government**
 - Size and skills of staff
 - Budget and time available to implement
- **Empower the community to contribute**
 - Users
 - Partners

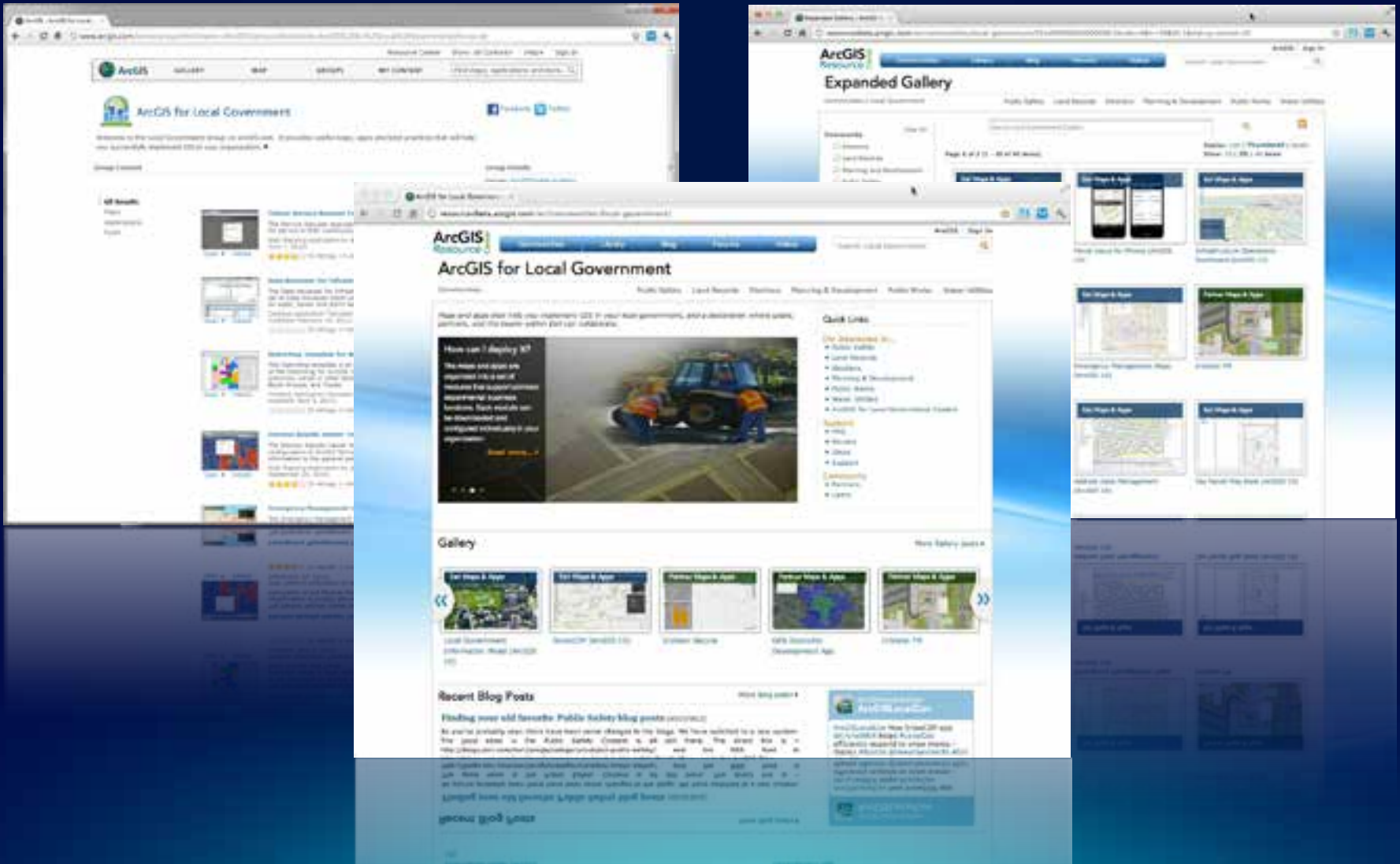
ArcGIS for Local Government

Changing the way GIS is deployed



Local Government Community

An online community where Local Government users and partners can collaborate



A System View

Deploying ArcGIS for Local Government

Access from Maps and Apps website



- Mobile Apps
- Web Apps
- Printed Maps

- Editing Maps
- Map Services
- Mobile Apps
- Web Apps

- Centralized Information Model
- Standard basemaps
- Common Feature / Map Services

Access from ArcGIS.com

Configuration Patterns

- **Influential factors**
 - **COTS and configurable solutions strategy**
 - **Deployment time**
 - **Technical expertise**
- **Three configuration patterns**
 - **Complete system adoption**
 - **Publish and adopt**
 - **Sample code and customize**
- **Where do you start?**
 - **With your business requirements**
 - **Align them with maps and apps**
 - **Review system configuration patterns**

Complete System Adoption



Step 1:
Organize your data

Configure GDB schema

- Add fields, features
- Configure domains
- Set spatial reference
- Load source data



Step 2:
Author the maps

Configure maps

- Adjust scale dependencies and def queries
- Validate label expressions
- Publish basemaps and map services



Step 3:
Deploy the apps

Configure the desktop, mobile and web apps

- Add basemaps and map services
- Adjust extents
- Configure popups
- Deploy Add-ins and models

Publish and Adopt



Step 1:

Create publication database

Configure GDB schema

- Add fields, features
- Configure domains
- Set spatial reference



Step 2:

Load production data

Create ETL Scripts

- Set source / target
- Schedule scripts
- Migrate production data



Step 3:

Author the maps

Configure maps

- Adjust scale dependencies and def queries
- Validate label expressions
- Publish basemaps and map services



Step 4:

Deploy the apps

Configure the mobile and web apps

- Add basemaps and map services
- Adjust extents
- Configure popups

Supported by Esri Support Services

Sample Code and Customize



Configure your GDB schema

- Add fields, features

Step 1:

Use your GDB Schema



Step 2:

Repair the maps

Configure maps

- Repair map layers (source and symbology)
- Adjust scale dependencies and def queries
- Validate label expressions
- Publish basemaps and map services
- Or, just try to use your maps...



Step 3:

Customize the apps

Publish your own mobile and web apps

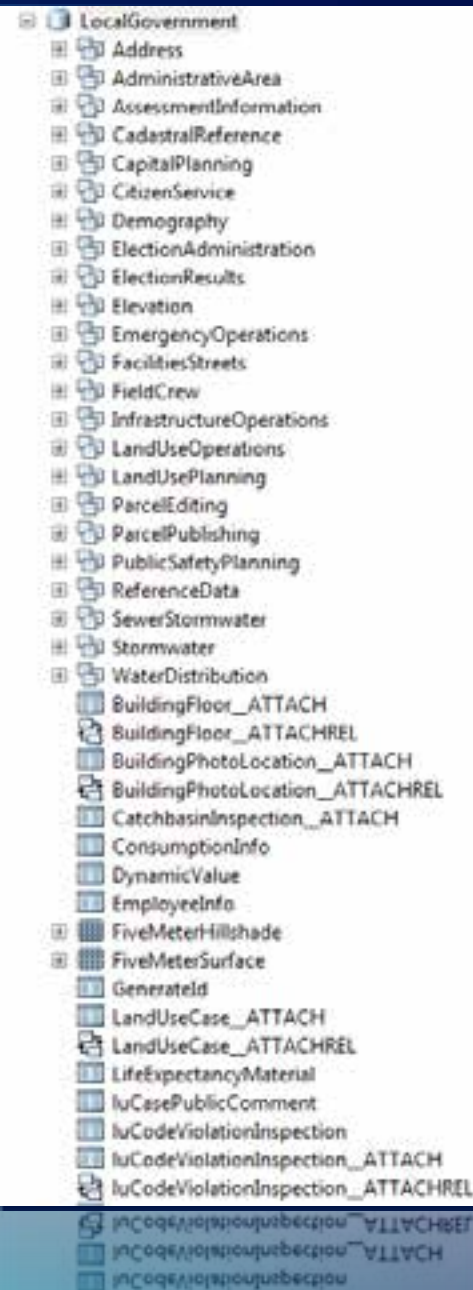
- Customize/re-compile the apps
- Add basemaps and map services
- Adjust extents
- Configure popups

NOT supported by Esri Support Services

Configuring the Information Model

- **Supports maps and apps**
 - Known local government requirements
 - Easy to adopt and extend
- **Fully documented**
 - Features, layers and packages
- **Central repository, organized around thematic content and logical permission model**
- **Organized access/maintenance patterns**
 - GDB replication, layers and services
- **Tip**
 - Xray for ArcCatalog and ArcMap

Start with the layer and field aliases and work from there....



Demo

Xray for ArcCatalog and ArcMap

Configuring the Editing Maps

- **Anatomy of an Editing Map**
 - **Optimized MXD w/ Feature Templates**
 - **One or more Add-Ins**
 - **Custom toolbars and/or attribute assistant**
 - **Custom construction tools**
- **Examples**
 - **Tax Parcel Editing**
 - **Special Event Planning**
 - **Infrastructure Editing**
 - **Address Data Management**

Demo

Address Data Management

Configuration the Web Apps

- **Anatomy of the web apps**
 - Javascript / HTML 5 apps
 - ArcGIS Viewer for Flex configurations
 - REST, GP, and Geometry Services, Web Maps
- **Examples**
 - Election Results
 - SnowCOP

Demo

Election Results and SnowCOP

Summary

- **Identify the business needs of your organization**
- **Evaluate the state of your data holdings**
- **Select a configuration pattern that makes sense for your organization**
- **Don't hesitate to ask for help from**
 - **Esri**
 - **Partners**

What's Next

Additional maps and apps

- **Public Works / Water Utilities**
 - Stormwater Assessment
 - Sign Inspection for iOS
 - Capital Planning
- **Planning & Development**
 - Address Crowdsourcing
 - Well / Septic Permitting
 - Site Selection Analysis
 - Operations Dashboard
- **Land Records**
 - Operations Dashboard
 - Tax Parcel Viewer (v.2)
 - Field Assessment
- **Elections**
 - Election Results (v.2)
 - Election Polling Place (v.2)
- **Public Safety**
 - Flood Response Planning
 - Fire Run Books / Station Wall Maps
 - Pre-Fire Planning
 - Fire Incident Command
 - EM COP (v.2)
- **Management**
 - Executive Dashboard

What's Next

Productizing the ArcGIS for Local Government system

- **10.1 Release**
 - **Online Help documentation**
 - **Simple, consolidated installer**
 - **Available at 2012 UC**
- **Quarterly release schedule**
- **ArcGIS Online offering**
 - **Synchronized w/ 10.1 Release of ArcGIS for Local Government**

Questions

Please fill out your surveys



@ArcGISLocalGov



arcgisteamlocalgov@esri.com



esri