

# Esri Developer Summit

March 26–29, 2012 | Palm Springs, California

[esri.com/events/devsummit](http://esri.com/events/devsummit)



## 8 Tips about Portal for ArcGIS and Online Organizations

Carol Sousa



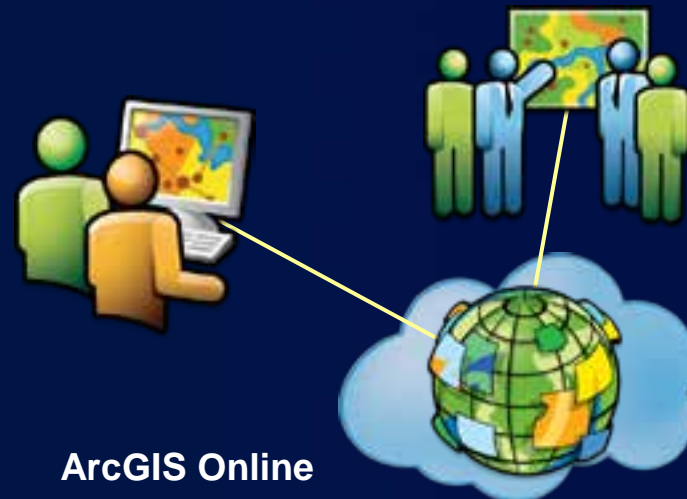
# ArcGIS Online is a

- **Cloud-based**
- **Collaborative**
- **Content management system**



# How Can You Use ArcGIS Online?

- **Public** – A free account
- **Organization** – Subscriptions with hosting
- **Private** – On-premises w/ Portal for ArcGIS



# Access is through a “portal”

Public – arcgis.com



arcgis.com

Organization



arcgis.com  
and <org>.maps.esri.com

Private



<portal>.com

# 1. Joining a Portal Organization

- Create a new username



- **DO NOT** join with your **arcgis.com** username
- **Why?**
- **All items become property of the organization**

## 2. Make your profile Public

- Other organizations can find you



Who can see your profile?  Everyone (public)  Organization  Private

Username: CarolHollistic

Language: English-English

- Makes it possible to share a group between organizations



### 3. Share one group to two portal orgs

- Create a group
- Invite user - search for the username registered to the other organization



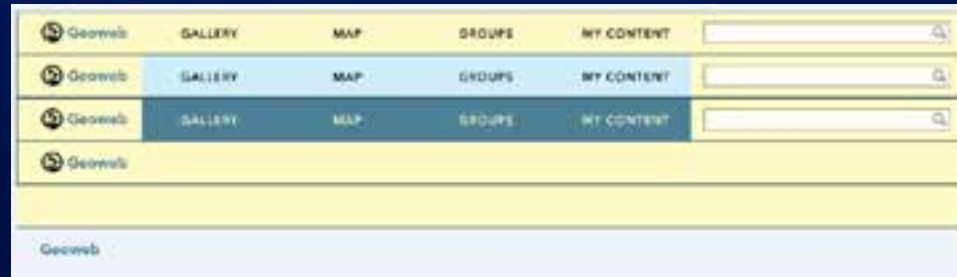
## 4. Customize the Navigation Bar – Portal only

- Global-nav.png
- C:\portal\portal\webapps\home\css\esri\images
- Default:

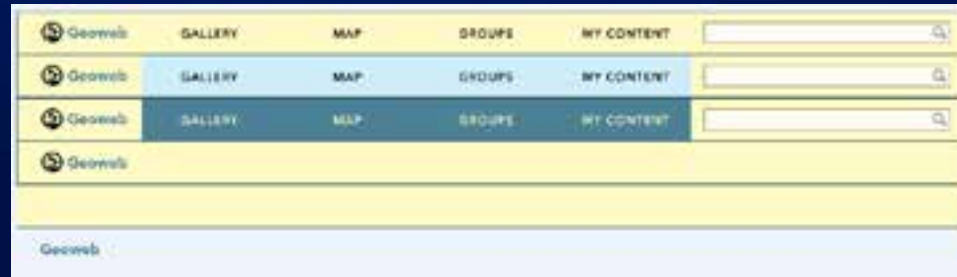




- Custom



- Custom



## 5. Switch Portal Connections in ArcMap

- Going from [arcgis.com](http://arcgis.com) to organization site easy with the ArcGIS Online dialog



## 5. Switch Portal Connections in ArcMap

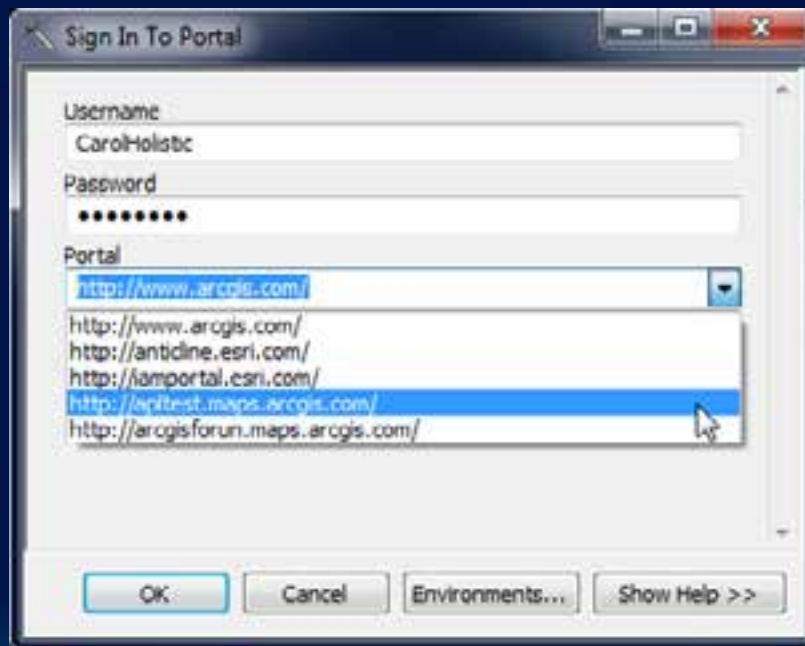
- From ArcMap, you now see that Portal's data



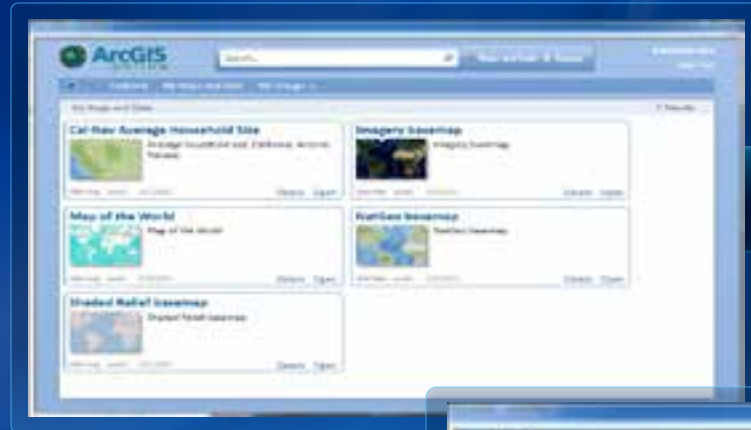
## 5. Switch Portal Connections in ArcMap

- Between private portal and other organizations use “Sign In To Portal”

Found in Server Tools > Publishing



# Portal from ArcMap



## 6. Why Can't I See Any Items?




Web Content shows services, web maps, web apps

The screenshot shows the ArcGIS Online interface for a group named "Demo Explorer". At the top, the navigation bar includes "Resource Center", "Show: Web Content Only" (circled in red), "My Organization", "Carol Sousa", "Notifications", "Help", and "Sign Out". Below this is a secondary navigation bar with "HOME", "GALLERY", "MAP", "GROUPS", and "MY CONTENT", along with a search box "Search this group...". A row of action buttons includes "Edit", "Invite Users", "Membership Requests", "Change Owner", and "Delete Group". The group profile section shows a profile picture, the name "Demo Explorer", and social media links for Facebook and Twitter. Below the profile, there are sections for "Group Content", "Group Details", and "6 Members".

Resource Center **Show: Web Content Only** My Organization Carol Sousa Notifications Help Sign Out

HOME GALLERY MAP **GROUPS** MY CONTENT Search this group...

Edit Invite Users Membership Requests Change Owner Delete Group

 **Demo Explorer**  Facebook  Twitter

zip files of Demo Explorer demos

Group Content

**All Results**  
Maps  
Applications  
Tools

Title Owner Rating Views **Date**

**Why don't I see any items?**

- ArcGIS.com is only showing items that can be viewed on the Web. Try changing the option at the top of the page to Show All Content.
- No items have been shared with this group yet. To share your items, go to My Content, select the items you want to share and click Share.

Group Details

CarolHolic  
Status: organization  
Tags: apl, demo, explorer

6 Members

CarolHolic  
DaveBenchmarks ✗  
LizBenchmarks ✗  
MarkBenchmarks ✗  
RichieBenchmarks ✗

## 6. Why Can't I See Any Items?

All Content shows data files - .csv, .txt, .zip, .lpk, .wpk

Resource Center Show: All Content My Organization Carol Sousa Notifications Help Sign Out

HOME GALLERY MAP GROUPS MY CONTENT Search this group...

Edit Invite Users Membership Requests Change Owner Delete Group

Demo Explorer

Facebook Twitter

zip files of Demo Explorer demos

Group Content

All Results Title Owner Rating Views Date

Maps Applications Tools

Bengal Delta Inundation 10.1 or 10.0 Demo  
Setup (installer) for Bengal Delta Demo  
Map Template by CarolHologic (last modified: February 15, 2012)  
☆☆☆☆ (0 rating, 0 comment, 0 download)

UC 2011 Spatial Analytics at 10.1  
Three new spatial analysis tools are shown, as well as sharing a geoprocessing package  
Desktop Application Template by CarolHologic (last modified: January 31, 2012)  
☆☆☆☆ (0 rating, 0 comment, 0 download)

Group Details

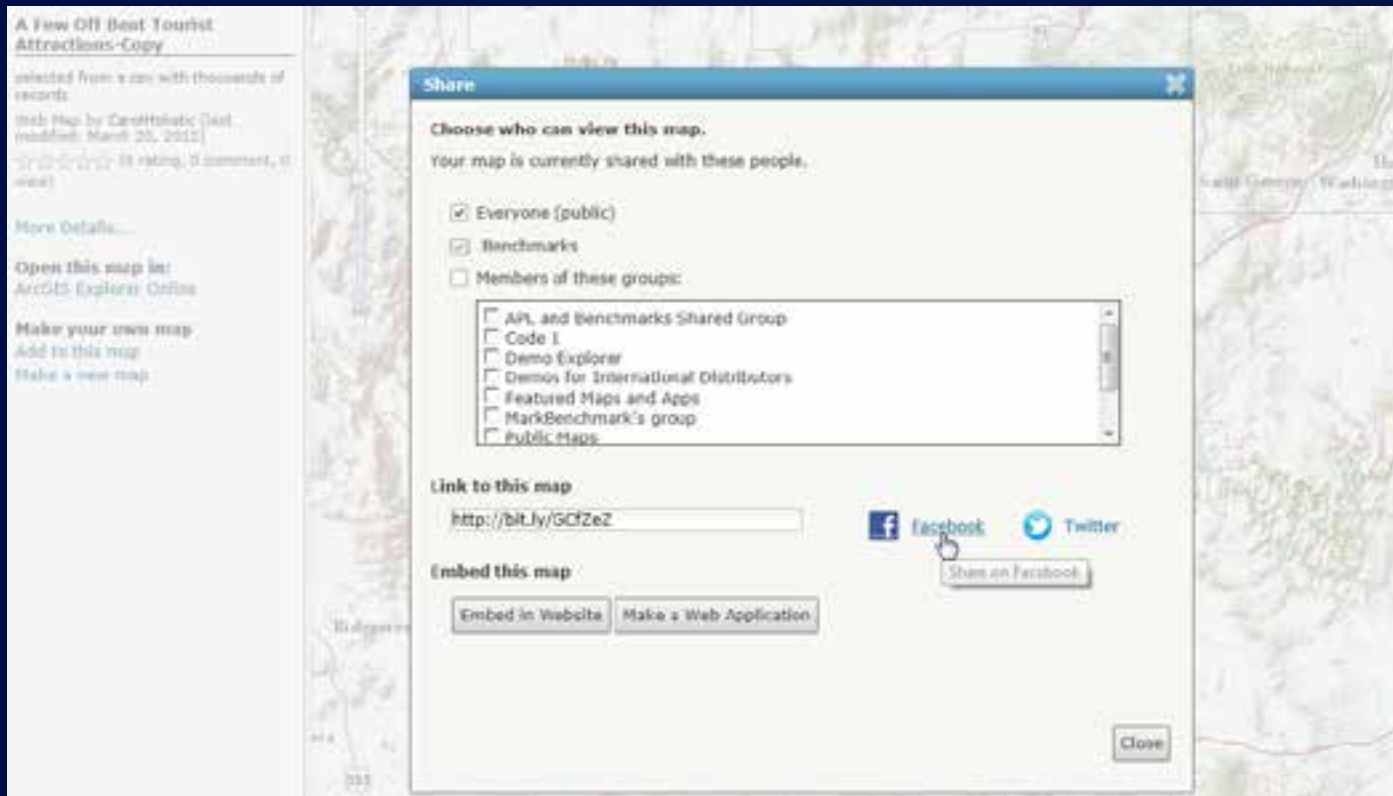
CarolHologic  
Status: organization  
Tags: apl, demo, explorer

6 Members

CarolHologic  
DaveBenchmarks ✕  
LizBenchmarks ✕  
MarkBenchmarks ✕  
RichieBenchmarks ✕  
WizoldBenchmarks ✕



## 7. Share to Facebook with bit.ly



The image shows a screenshot of a map application's sharing interface. A 'Share' dialog box is open over a map. The dialog has a blue header and contains the following elements:

- Share** (header)
- Choose who can view this map.**
- Your map is currently shared with these people.**
- Checkboxes for sharing options:
  - Everyone (public)
  - Benchmarks
  - Members of these groups:
- A scrollable list of groups:
  - All, and Benchmarks Shared Group
  - Code 1
  - Demo Explorer
  - Demos for International Distributors
  - Featured Maps and Apps
  - MarkBenchmark's group
  - Public Maps
- Link to this map**
- A text input field containing the URL: `http://bit.ly/GCfZeZ`
- Facebook and Twitter social media icons.
- A button labeled **Share on Facebook** is highlighted with a mouse cursor.
- Embed this map**
- Buttons for **Embed in Website** and **Make a Web Application**.
- A **Close** button in the bottom right corner.

In the background, a map is visible with a sidebar on the left containing text about a 'A Few Off Beat Tourist Attractions-Copy' map, including details like 'Web Map by Carottolatic (last modified: March 20, 2012)' and 'More Details...'. The sidebar also has links for 'Open this map in: ArcGIS Explorer Online' and 'Make your own map'.

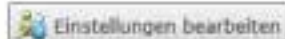
## 8. Support for 10 Languages

- Edit Settings – General page



No image available

## Portal for ArcGIS



Einstellungen bearbeiten

## Mitglieder

Anzeige: Aktuelle Mitglieder

Nach Name suchen...

▲ Name	Benutzername	Beitrittsdatum	Verwendet (MB)	Rolle			
--------	--------------	----------------	----------------	-------	--	--	--

**Willkommen Administrator. Fügen Sie Ihrer Portal weitere Benutzer hinzu.**

Zurzeit sind Sie das einzige Mitglied Ihrer Portal. Um weitere Mitglieder hinzuzufügen, klicken Sie auf 'Benutzer zur Organisation einladen'.

Wenn Sie Benutzer hinzufügen, können Sie:

- Anzeigen und Verwalten aller Inhalte und Gruppen dieser Benutzer
- Bearbeiten des Profils dieser Benutzer
- Erlauben, dass Mitglieder Inhalte verwenden, veröffentlichen und verwalten
- Verschieben von Inhalten zwischen Mitgliedern
- Verwalten von Gruppeninhalten und -mitgliedern

**Richten Sie die Ihre Portal-Seiten ein.**

Sie können das Aussehen und den Inhalt zahlreicher Portal-Seiten individuell anpassen. Klicken Sie auf die Schaltfläche "Bearbeiten" oben, um die Ihre Portal-Einstellungen für die folgenden Kategorien zu ändern: Allgemein, Startseite, Galerie, Karte und Gruppen.

## Suchen...

Die am häufigsten aufgerufenen Elemente

Die zuletzt hinzugefügten Elemente

Gruppen

Ausgewählte Gruppen

Featured Maps and Apps





esri