



Esri International Developer Summit  
Palm Springs, CA

# What's New in ArcGIS API for Silverlight and Silverlight Viewer

Rex Hansen - @rex\_hansen

Rich Zwaap - @zwaap

# Agenda

- Platform
- What's New in the API
- What's New in the Viewer
- Road Ahead



# Microsoft's Silverlight Platform



- Web client for desktop browsers
- Silverlight 5
- Support latest desktop platforms\ browsers
  - Windows 8.1, Windows Server 2012, IE11, Firefox 12+, Chrome 12+
- Support latest IDEs
  - Visual Studio 2013
  - Blend for Visual Studio 2013
- Mature platform



# ArcGIS API for Silverlight

- Powerful Web Mapping API
- Visualization with touch enabled Map control
- Toolkit to support use of map and data
- Use geospatial services
- Graphics and Editing
- Tasks
- Support for Portals  
& ArcGIS Online organizations



# What's New in the 3.2 API - December 2013



- Visual Studio 2013
- Async tasks
- WebTiledLayer
- Symbol angle and rotation
- Dynamic layer labeling
- WebMapViewModel
- Enhancements to:
  - ArcGIS Server 10.2
  - ArcGIS Online and Portal for ArcGIS



- New Developer site
- Nuget packages
- GitHub repos

\* Assembly version, 10.2.1 = 3.2

# What's new - API

Rex Hansen

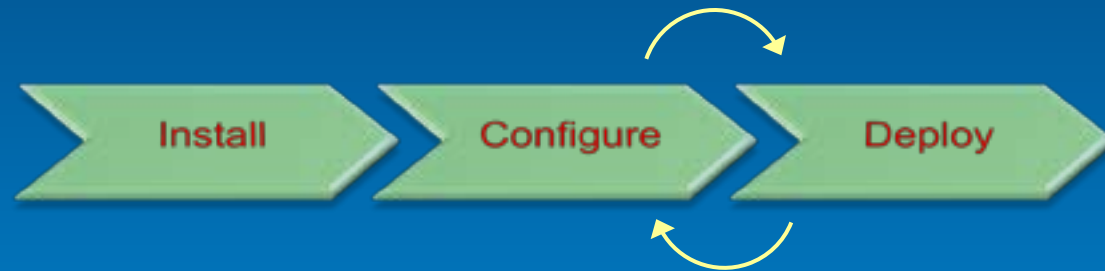


```
100% - fx [Design] [XAML] [Map]
<UserControl x:Class="ArcGISSilverlightSDK.SwitchMap"
  xmlns="http://schemas.microsoft.com/winfx/2006/xaml"
  xmlns:x="http://schemas.microsoft.com/winfx/2006/xaml"
  xmlns:esri="http://schemas.esri.com/arcgis/client/3.9/ArcGIS.Silverlight"
  <Grid x:Name="LayoutRoot" Background="White">
  <esri:Map x:Name="MyMap" WrapAround="True" Load="true"
    <esri:ArcGISMapServiceLayer ID="AGOL"
      Url="http://services.arcgisonline.com/ArcGIS/rest/services/World/MapServer"
    </esri:Map>
  <Grid HorizontalAlignment="Right" Background="White">
    <StackPanel Orientation="Horizontal" HorizontalAlignment="Right">
      <RadioButton x:Name="StreetsRadioButton"
        Tag="http://services.arcgisonline.com/ArcGIS/rest/services/World/MapServer"
        IsChecked="true" Margin="5,0,5,5"
        GroupName="Layers" Content="Streets"
      <RadioButton x:Name="TopoRadioButton"
        Tag="http://services.arcgisonline.com/ArcGIS/rest/services/World/TopographicMap"
        Content="Topographic"
      </StackPanel>
    </Grid>
  </Grid>
```

# ArcGIS Viewer for Silverlight



- Configurable ready-to-deploy Web client
  - Built with ArcGIS API for Silverlight
- Easily and quickly create and implement GIS Web mapping applications



- Programming and editing config files not required
  - Ideal for novice Web application creators
- Set of core tools and functionality out-of-the-box



# Extending the Viewer



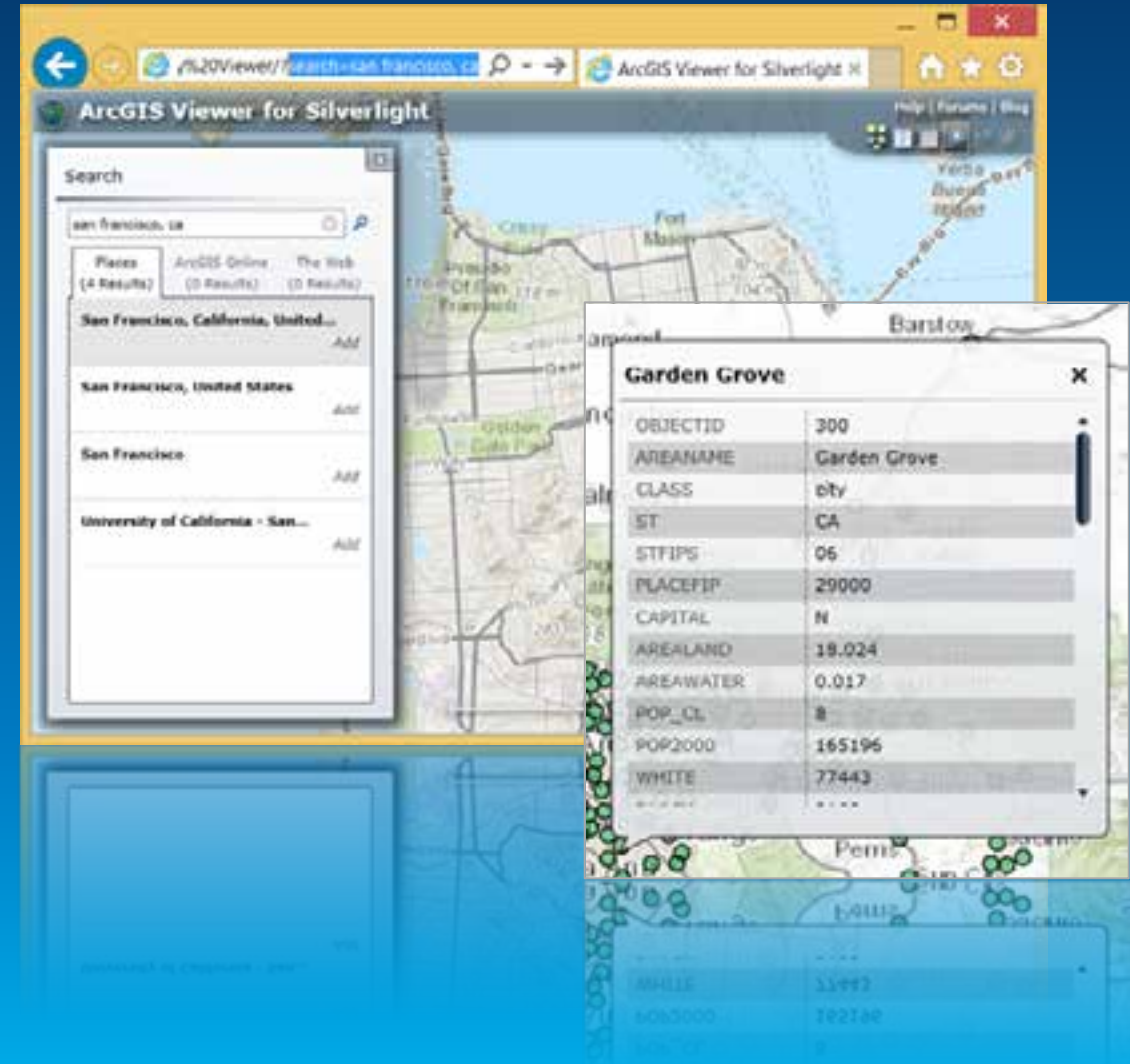
- Extensible through add-ins
  - "Add-in" → module containing new functionality
- Several ways to customize:
  1. **Tools** → functionality initiated by tool on toolbar
  2. **Behaviors** → non-UI logic
  3. **Layouts** → custom application "look and feel"
  4. **Controls** → UI integrated into application
- Developer hooks for exposing configurability
  - Can integrate seamlessly with App Builder configuration





# What's New in the 3.2 Viewer - December 2013

- End-User Enhancements
  - Query Tool
  - URL Parameter Support
  - Pop-Up Improvements
  - Support for Portals with PKI and IWA Security
  - Twelve new languages
- Developer Enhancements
  - Visual Studio 2013 Integration
  - Window positioning hooks
    - Initialize, retrieve, and update window position
  - INotifyInitialized interface
    - Notify Viewer of add-in initialization



# What's New - Viewer

Rich Zwaap

```
45     webMapSpecified = true;
46
47     // get the web map id
48     string webMapID = queryString["webma
49     MapApplication.Current.LoadWebMap(we
50     {
51         // Fire the InitializationFailed
52         if (e.Error == null)
53             OnInitializationFailed(e.Err
54         else
55             OnInitialized();
56     });
57     }
58 }
59
60 // Fire initialized event a web map is not b
61 if (!webMapSpecified)
62     OnInitialized();
63 }
64 catch (Exception ex)
65 {
66     OnInitializationFailed(ex);
67 }
68 }
69 #endregion
70
71 #region INotifyInitialized Members
72 /// <summary>
73 /// Gets whether initialization has completed.
74 /// </summary>
75 9 references
76 public bool IsInitialized { get; private set; }
77
78 /// <summary>
79 /// Gets the initialization error. Will be populate
80 /// </summary>
```

# Road Ahead



- Esri's Roadmap for Web developers
- Targeted fixes and enhancements
- Continued support
- Release schedule

## Esri's Roadmap for Web Developers

by Julie Powell on February 21, 2014

This post is designed to provide clarity on the future of our Flex and Silverlight dev...  
...e continually monitor general web technology trends and the direction of our cus...

Introduction to the ArcGIS API for JavaScript

Wednesday 2:30pm - 3:30pm – Primrose A

Introduction to the ArcGIS WebApp Builder: JavaScript Apps Made Easy

Thursday 1pm - 2pm – Primrose B

# ArcGIS Runtime SDK sessions Wednesday

Session Name	Time	Location
Building WPF Apps with the New .NET ArcGIS Runtime SDK	10:30am – 11:30am	Pasadena/Ventura/Sierra
Building Windows Store and Windows Phone Apps with ArcGIS Runtime SDK	1:00pm – 2:00pm	Primrose C/D
Building WPF Apps with Runtime SDK	2:30pm – 3:30pm	Demo Theater 2 – Oasis 1

# ArcGIS Runtime SDK sessions Thursday

Session Name	Time	Location
The Road Ahead: ArcGIS Runtime SDKs	8:30am – 9:30am	Primrose A
Everything (or Anything) You Wanted to Know about the ArcGIS Runtime SDKs	10:00am – 11:00am	Primrose A
Building Windows Store and Windows Phone Apps with ArcGIS Runtime SDK	1:00pm – 2:00pm	Mesquite B
Migrating Your WPF Apps to the New ArcGIS Runtime SDK for .NET	1:00pm – 2:00pm	Pasadena/Ventura/Sierra
Building WPF Apps with the New .NET ArcGIS Runtime SDK	2:30pm – 3:30pm	Mesquite B

# Questions?

- **Session Surveys**

<http://www.esri.com/events/devsummit/session-rater>



Understanding our world.