

Real-world Native App Design Using Qt/QML

Michael Tims

Jen Trieu

Agenda

- **C++**
 - **Semantic change**
 - **Lambda**
 - **Graphic widget**
- **QML**
 - **Property binding**
 - **Models and Views**
 - **Working disconnected**
 - **Data/Deployment**
- **QA**

C++

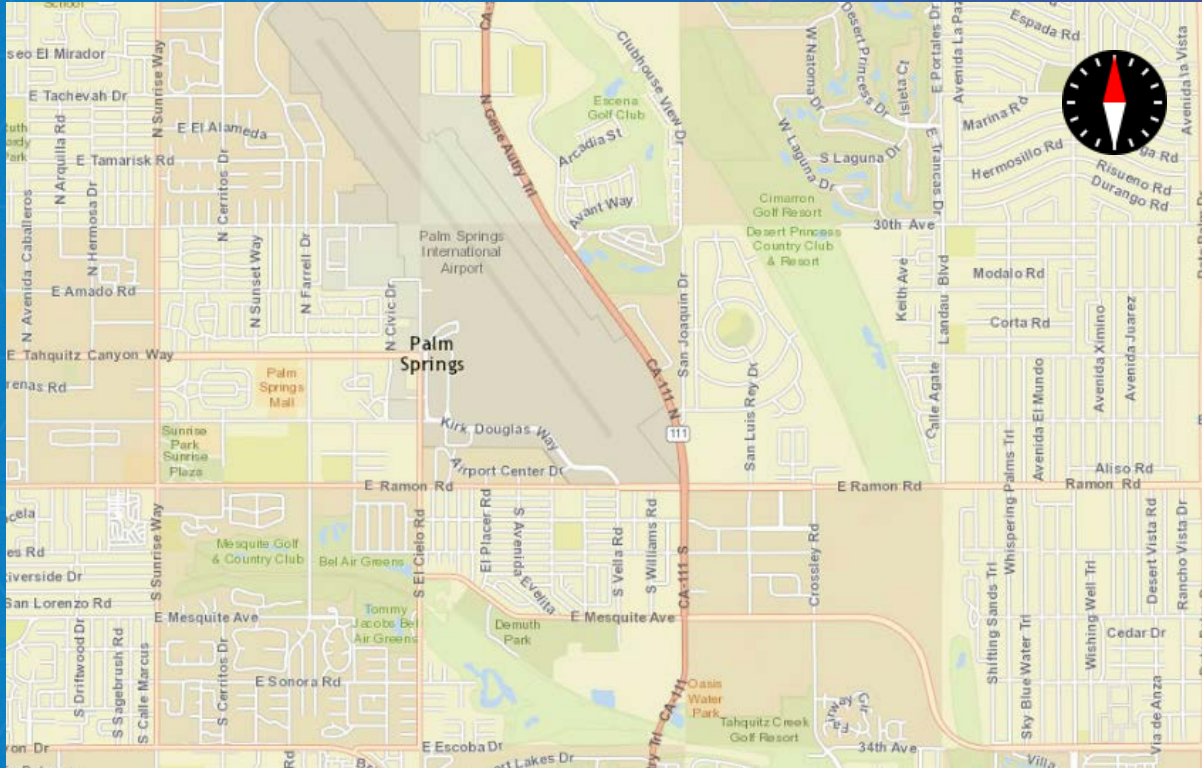
Semantic Change



C++

Lambda





C++ Graphic Widget



QML Property Binding

<https://github.com/Esri/arcgis-runtime-toolkit-qt>

QML

Models and Views

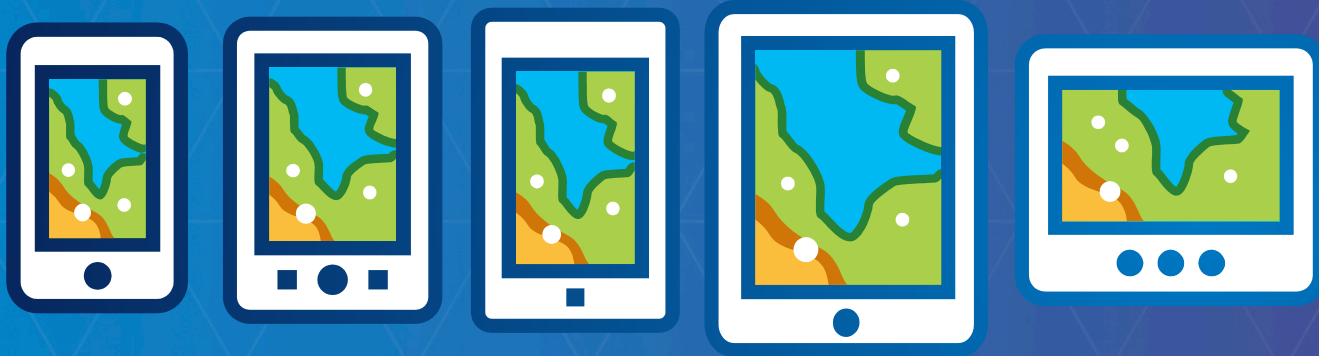




QML
Working
Disconnected



QML
Data



QML Deployment

ArcGIS Runtime SDK sessions Thursday

Session Name	Time	Location
Build an Android and iOS App in 20 Minutes	2:30-3:00pm	Demo Theater 1 - Oasis 1
Best Design Practices Using QML	4:30-5:00pm	Demo Theater 1 - Oasis 1

ArcGIS Runtime SDK sessions Friday

Session Name	Time	Location
The Road Ahead: ArcGIS Runtime	8:30 – 9:30am	Primrose A
Everything (or Anything) You Wanted to Know about the ArcGIS Runtime SDKs but Were Afraid to Ask	10:00 – 11:00am	Primrose A

Rate This Session

www.esri.com/RateMyDevSummitSession



Questions?

