

Esri Developer Summit

March 8–11, 2016 | Palm Springs, CA



Getting Started with Imagery using the Web AppBuilder for ArcGIS

Naila Khan & Sangeet Mathew

Agenda...

- **Introduction to Web AppBuilder**
- **Create an application that uses imagery for visualization**
- **System widgets to work with imagery**
- **Custom widgets for specific imagery workflows**
- **What's next...**
- **Q&A**

Web AppBuilder for ArcGIS



- **Enables new apps to be created without coding**
- **Interactive user experience**
- **Runs on any device; in a web browser**
- **Built using ArcGIS API for JavaScript and HTML 5 technology**
- **Extensible**
- **Fully integrated with the ArcGIS Platform**

Two ways of working with Web AppBuilder

1. **Within ArcGIS Online or Portal for ArcGIS**

- Embedded in the web site
- Activate from the map viewer or My Contents

2. **Developer Edition**

- Separate download and installed locally
- Sign into ArcGIS Online or Portal for ArcGIS
- Support for custom widgets and themes

- Both offer the same “builder” user experience, same capabilities



Demo – Available Imagery widgets

- Layer List
- Legend
- Query
- Attribute Table
- Popups
- Image Measurement*



* Specifically designed to work with image services

Imagery Custom Widgets: <https://github.com/Esri/WAB-Image-Services-Widgets>

- Designed to work specifically with image services
- Live apps
- Download and unzip the file
- Follow instructions in the 'WEBAPP BUILDER USER DOC.docx'

The screenshot displays the GitHub repository page for `Esri/WAB-Image-Services-Widgets`. At the top, the GitHub logo and navigation links are visible. The repository name is prominently displayed, along with statistics for Watch (64), Star (0), and Fork (0). Below this, there are tabs for Code, Issues (0), Pull requests (0), Pulse, and Graphs. The repository description states: "WAB widgets specific to image services." A progress bar indicates 31 commits, 2 branches, 0 releases, and 4 contributors. A toolbar includes options for Branch (master), New pull request, New file, Find file, HTTPS, and Download ZIP. The commit history table is as follows:

Commit	Message	Time
kushu493	Updated FoldableWrapperTheme	Latest commit 446b4a1 7 days ago
documentation	Added IS TimeSelect and Updated Documentation	13 days ago
imagery_widgets	Added IS TimeSelect and Updated Documentation	13 days ago
theme/FoldableWrapperTheme	Updated FoldableWrapperTheme	7 days ago
LICENSE	license update	6 months ago
README.md	Update README.md	22 days ago

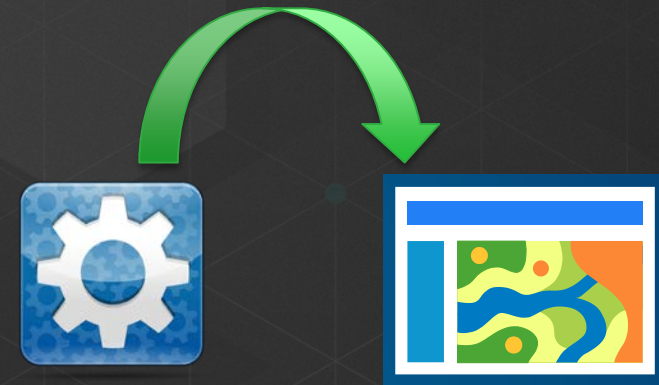
The README section is titled "WAB-Image Services-Widgets" and contains the following text:

These are custom widgets to be used in Web App Builder, dealing specifically with Image Services.

[View live app here with IS Mensuration and IS Classification widgets](#)

Demo – Custom Imagery widgets

- **Renderer**
- **Time Filter**
- **Swipe**
- **Change Detection**
- **Image Classification**
- **Spectral Profile**

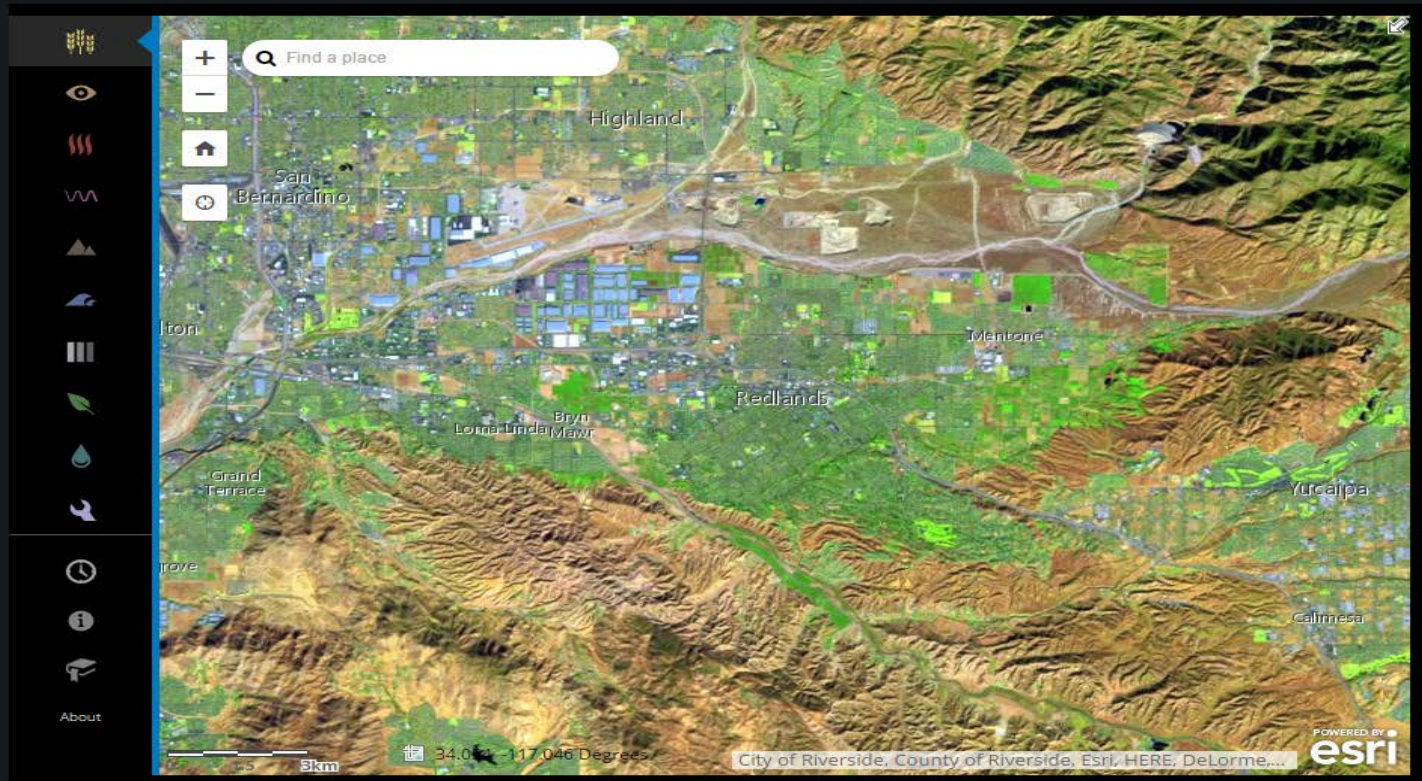


Unlock Earth's Secrets:

<http://www.esri.com/landing-pages/software/landsat/unlock-earths-secrets>

You're in Command

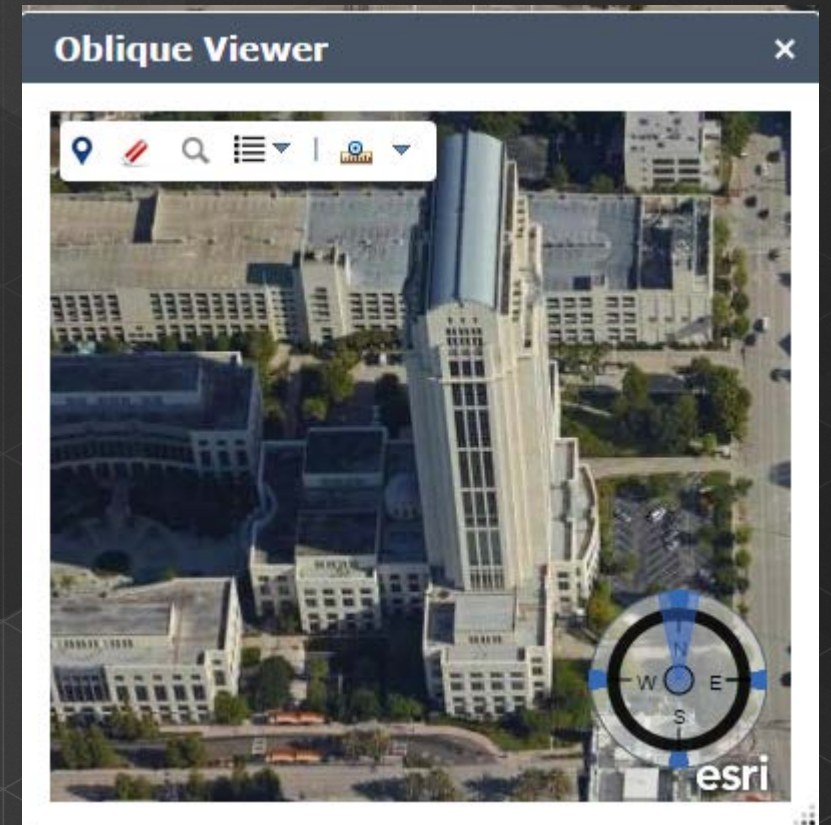
With ArcGIS, you decide what you want to explore. Zoom to any location or bookmark, and try the tools in this simple web app.



ArcGIS lets you use Landsat in your own apps, with new scenes added daily.

Oblique viewer – Coming up in the next release

- Allows you to view an area of interest from different angles
- Displays images using an Image Coordinate System
- Avoids distortion
- Works with 10.3 or higher image services



Web AppBuilder for ArcGIS Resources

- Online help documentation
<http://doc.arcgis.com/en/web-appbuilder>
- Developer Edition help documentation
<https://developers.arcgis.com/web-appbuilder/guide/xt-welcome.htm>

Summary...

- **Quickly create applications to visualize and analyze your imagery**
- **System widgets that work well with imagery**
- **Custom widgets written for specific imagery workflows**
- **More imagery widgets in the next release**



Thank you

Naila Khan

nkhan@esri.com

Sangeet Mathew

smathew@esri.com

Any Questions?

Please fill out the survey and rate our session using the esri events mobile app.

