



Introduction to Explorer for ArcGIS

Brent Pierce

Scott Ball

2018 Esri DEVSummit Conference | Palm Springs, CA

Agenda

Introduction to Explorer for ArcGIS

- ArcGIS platform overview
- Explorer for ArcGIS overview
- Creating and using offline maps
- Map markup
- Deep linking with URL schemes
- What's next in Explorer
- Q&A

ArcGIS platform overview



Apps Are Bringing the Power of GIS to Everyone

Extending the Reach of GIS



Across Organizations and Beyond

Apps support your organization

Make compelling information products that support decision making from anywhere, anytime

- Apps Support Management
 - Leverage the full potential of your Web GIS investment
 - Apps → solve common business workflows
 - Have everyone in your organization work with the same information



- Apps Enhance the GIS Analyst's Work
 - Share your work to other parts of the organization
 - Enable other departments to leverage your geospatial assets
 - Curator of the authoritative datasets in your organization



Boost your productivity

....optimizing field operations

..... Empowering geography-based analytics

..... Delivering visually compelling information products...

Explorer for ArcGIS overview





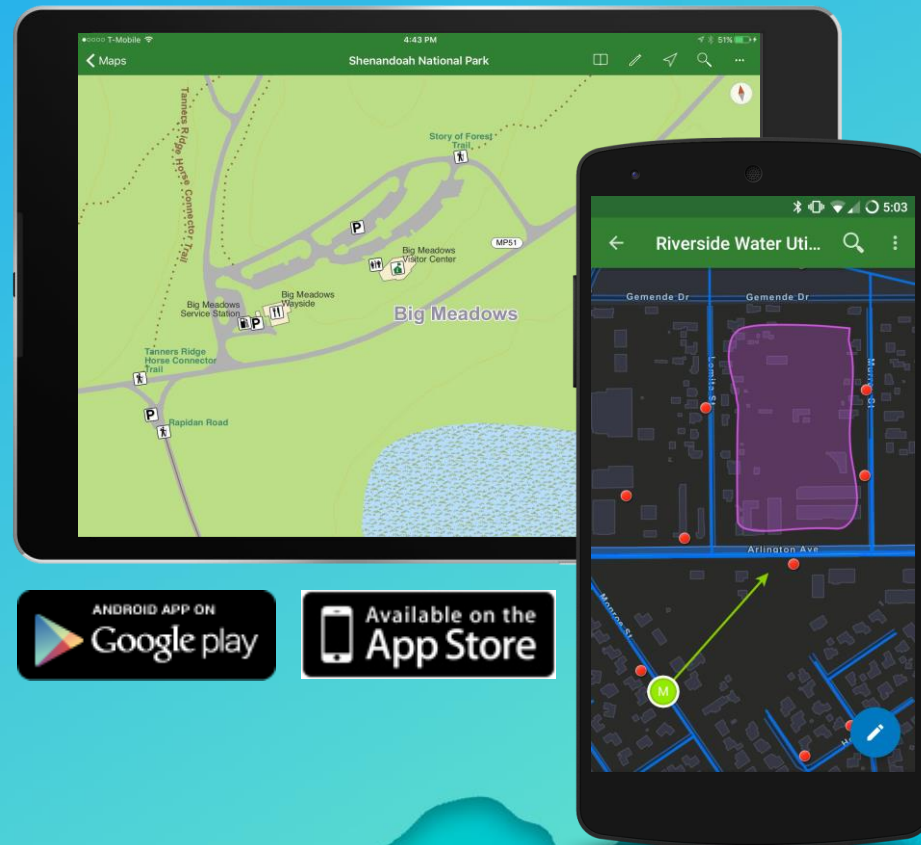
Explorer for ArcGIS

Your maps, everywhere you go

The best mobile map experience

Access information while disconnected

Create and share map markup





Explorer for ArcGIS

Capabilities by user level

Anonymous Users can access publicly shared maps

Level 1 Named Users can view private data from ArcGIS

Level 2 Named Users can view private data from ArcGIS and share map markup back to ArcGIS

Creating and using offline maps

Access information while disconnected





Explorer for ArcGIS

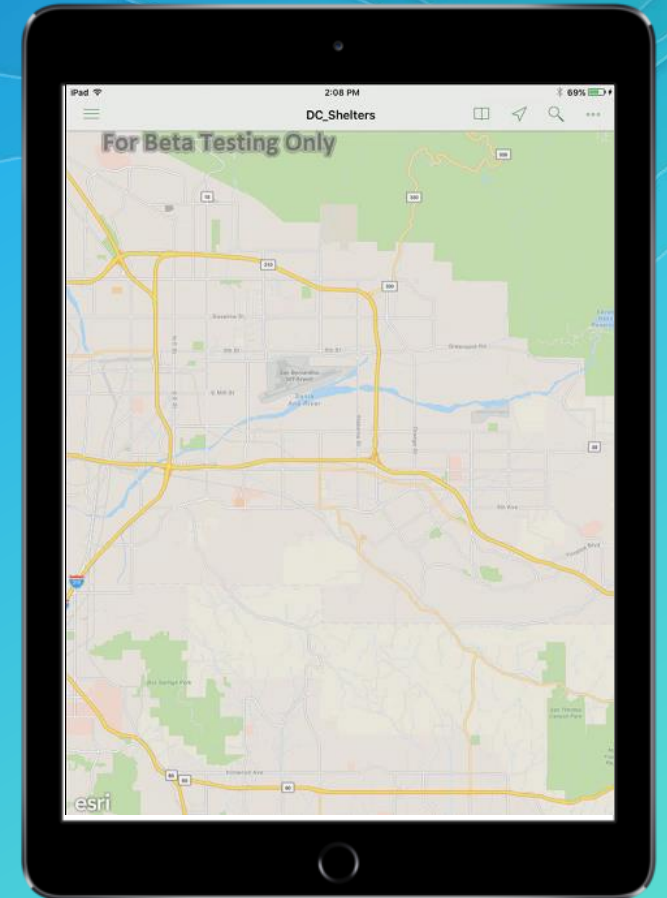
Access information while disconnected

Options for offline maps

- Create MMPKs from ArcGIS Pro
- On demand: take portions of web maps offline directly from the app (coming soon)

Important functionality for:

- Forestry and Natural Resources
- Fire and Law Enforcement
- Users with limited network access and/or critical data needs





Publisher extension

Create MMPKs that can be used anonymously



ArcMap



Published Map File (PMF)



ArcReader



ArcGIS Pro



Mobile Map Package (MMPK)



Explorer for ArcGIS



Publisher extension

Create MMPKs that can be used anonymously

Phase 1 (available now)

Pro users licensed with the Publisher extension can create Explorer specific maps

Phase 2 (target: 2018)

Enhance ArcGIS Pro to include more core Publisher/Reader functionality

- Encryption / Data Timeout

- Password Protected MMPKs

- Company Branding (splash screen and attribution) associated with MMPK

- More...



Demo

Basic offline capabilities

Map markup

Create and share map markup





Explorer for ArcGIS

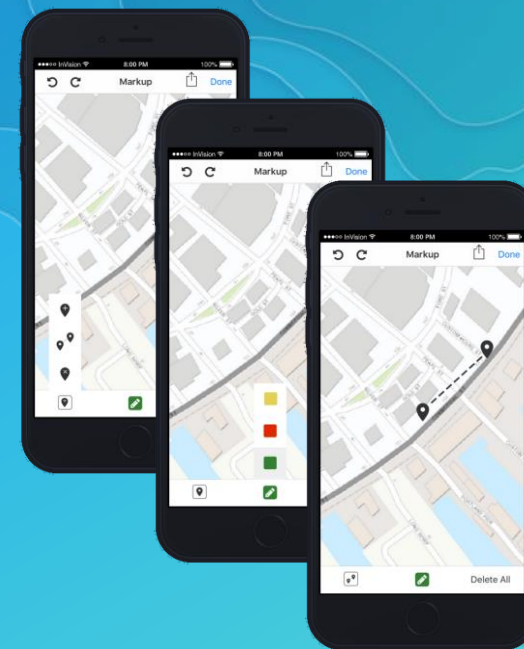
Create and share map markup

Enhanced Map Sketching/Markup

- Markup and annotations are persistent
- ArcGIS Org users can share with a group
- Supports redlining workflows

Important functionality for:

- Utility Customers (gas, water, electric)
- Public works
- Users who need to communicate information without directly editing operational data



Markup Usage Pattern (Named User Level 1)

Create



Explorer for ArcGIS

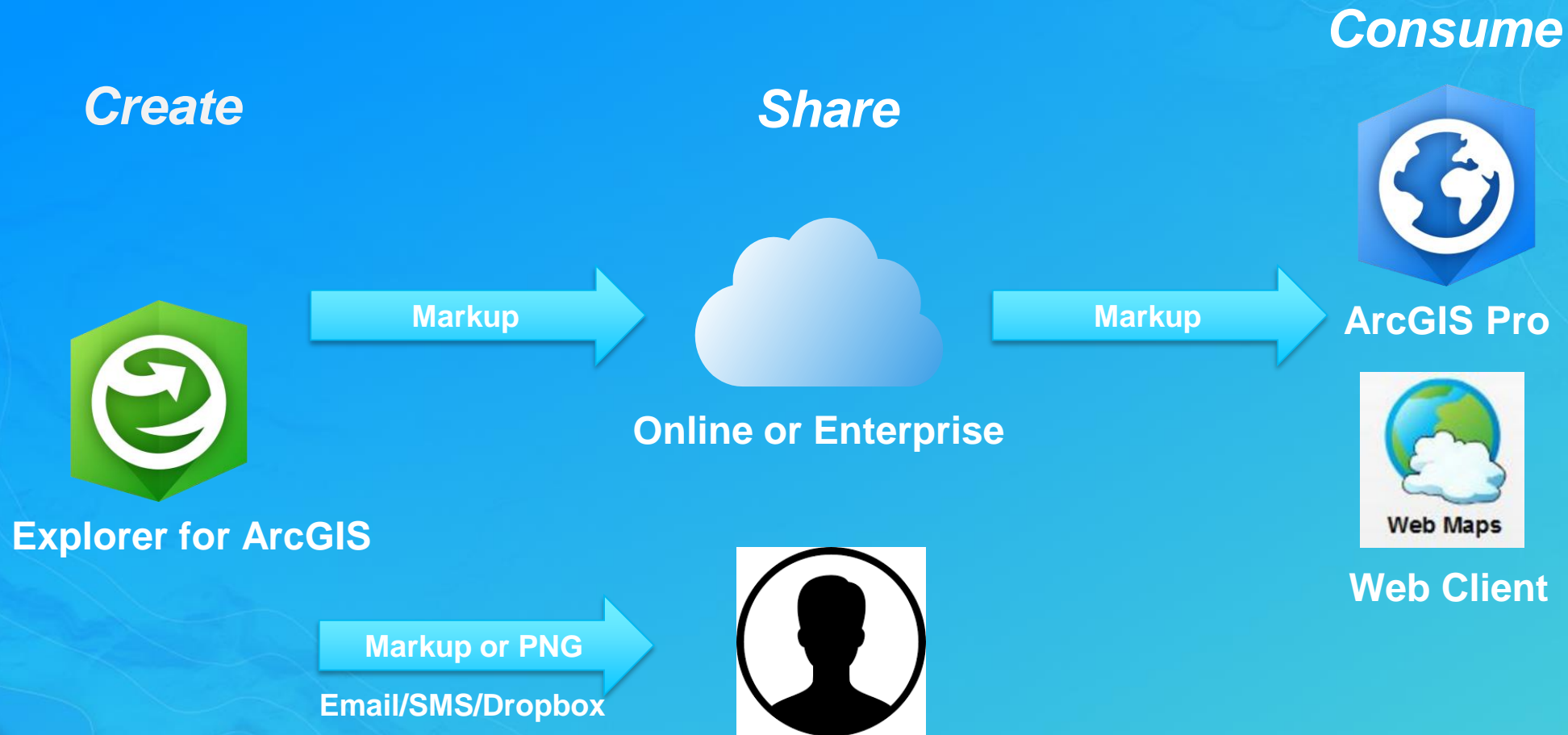


Email/SMS/Dropbox

Share



Markup Usage Pattern (Named User Level 2)



Demo

Map markup



Deep linking with URL schemes

Open one app from inside another app



Deep Linking with URL Schemes

What is a URL Scheme?

A URL Scheme is a method of invoking and passing state between applications – often referred to as Deep Linking

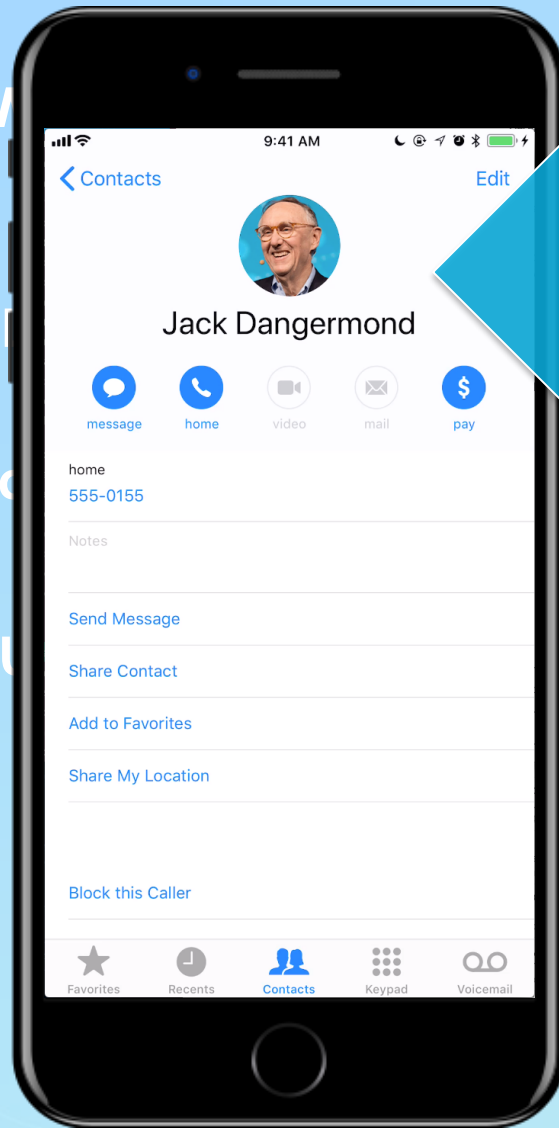
Pretty common today in many applications

Who has used a URL Scheme before?

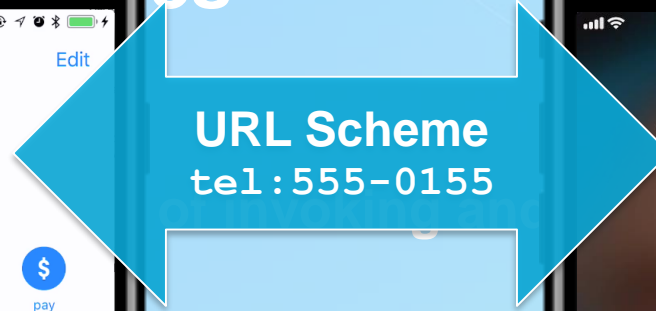
Deep Linking with URL Schemes

What is a URL Scheme?

- Simply put, a URL scheme is used to launch applications
- Pretty common to use a URL scheme to launch an application
- Who has used a URL scheme?



Contacts.app



Phone.app

Deep Linking with URL Schemes

Sounds fancy

Way to link into a specific state or location of your app

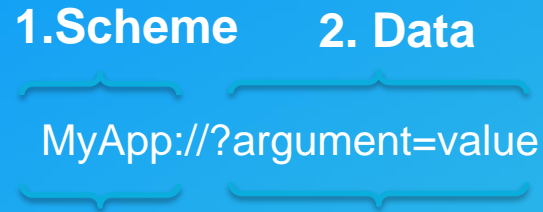
Methodology varies by platform iOS, Android, Blackberry, Windows all have specific technologies for handling this

Esri has standardized URL Scheme style for all platforms

This means one URL works on all platforms

URL Scheme Structure

Basics



1. Identifying information for the app being invoked. This is often referred to as the “Scheme”. Note that this is the same for the app on all platforms but is different than the AGOL App ID.
2. App specific data or parameters

```
arcgis-explorer://?itemID=1cde286f20b74fa69b3c36dfa1e81a85
```

```
arcgis-navigator://?stop=777+East+Alejo+Rd,+Palm+Springs,+California&stop=...&stop=...
```



Explorer for ArcGIS

Explorer URL scheme

Supported Arguments:

- **itemID** - Web Map or MMPK to open/download on launch
- **center** - center point of map - Lat/Lon, Address, Feature
- **wkid** - provide wkid for Lat/Lon in non-WGS84 spatial reference
- **scale** - scale to display the map at on launch
- **rotation** - custom map rotation
- **markup** - enable markup tool on launch
- **bookmark** - center map on bookmark instead of using center param
- **search** - quickly execute search for feature in map

GitHub Repository: <https://github.com/Esri/explorer-integration>



Demo

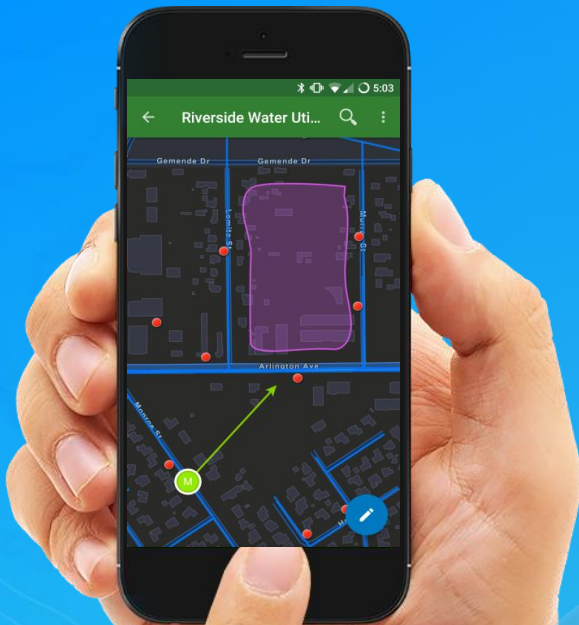
URL schemes

What's next?





What's coming next



Recent Improvements

Groups in browse

Magnifier is back

URL Scheme improvements

Plenty of bug fixes

Coming soon

Take web maps offline dynamically from within the app

Offline imagery support

Improved search

UX enhancements

Beyond

Support advanced offline MMPK capabilities like password protected data and map time-out

Preplanned offline workflows

Support for 3D

**Subject to change*

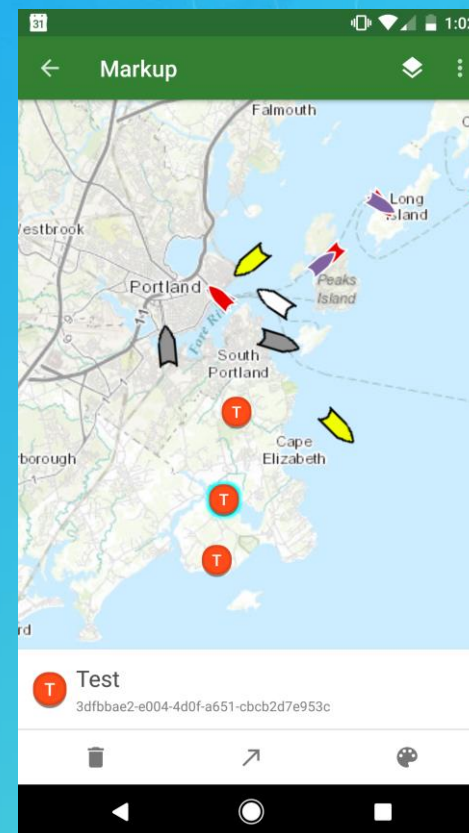
Sneak Peek Demo

New offline capabilities
(time permitting)



Explorer for ArcGIS

Android beta



<https://community.esri.com/groups/explorer-beta>



Explorer for ArcGIS

Send us your questions and feedback

Explorer GeoNet site

<https://geonet.esri.com/groups/explorer-for-arcgis>



Questions?



esri

THE
SCIENCE
OF
WHERE