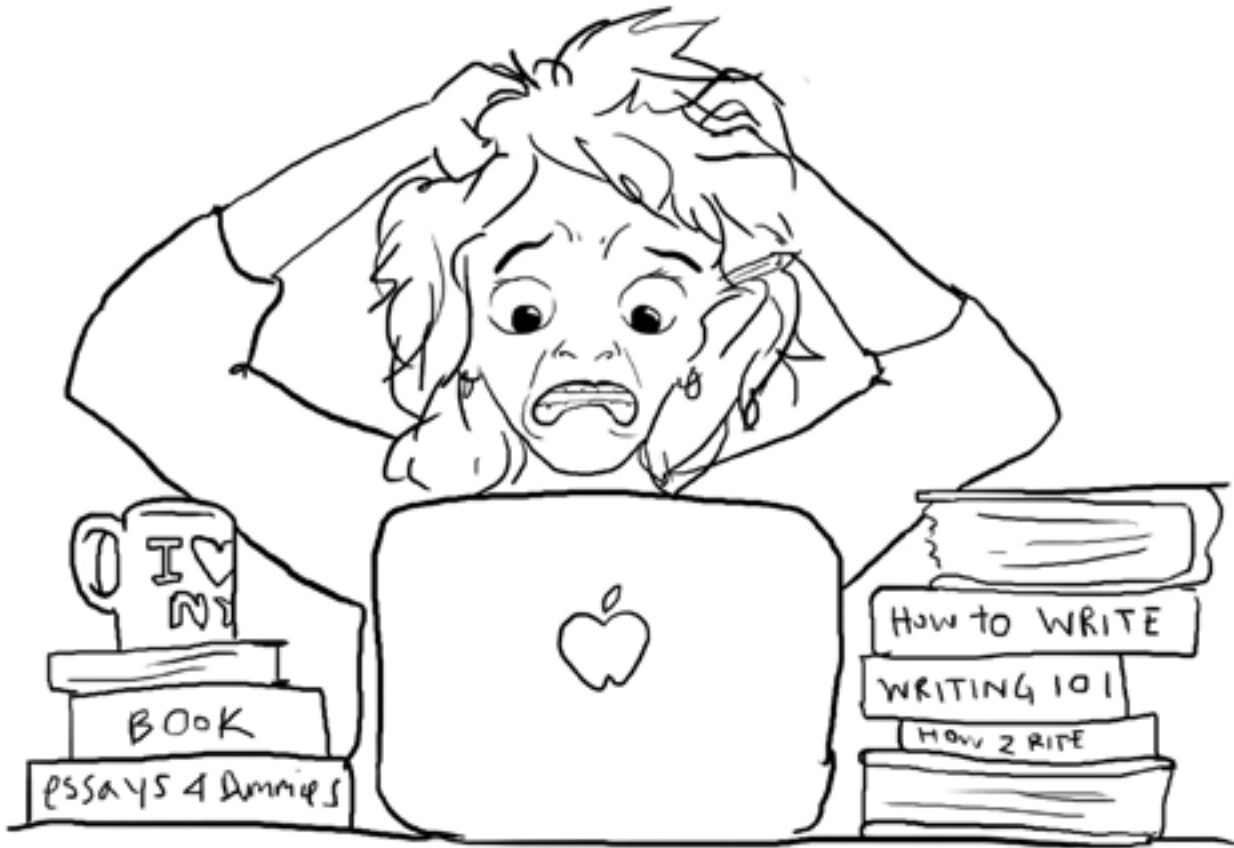




# Teaching GIS in the Classroom: Story Maps as a Case Study

*Daniel N. Warshawsky*  
*Spatial Sciences Institute*  
*University of Southern California*

# From Research Paper to Story Map



# Story Map Basics



## Hurricane Wilma

Storm surge caused by Hurricane Wilma

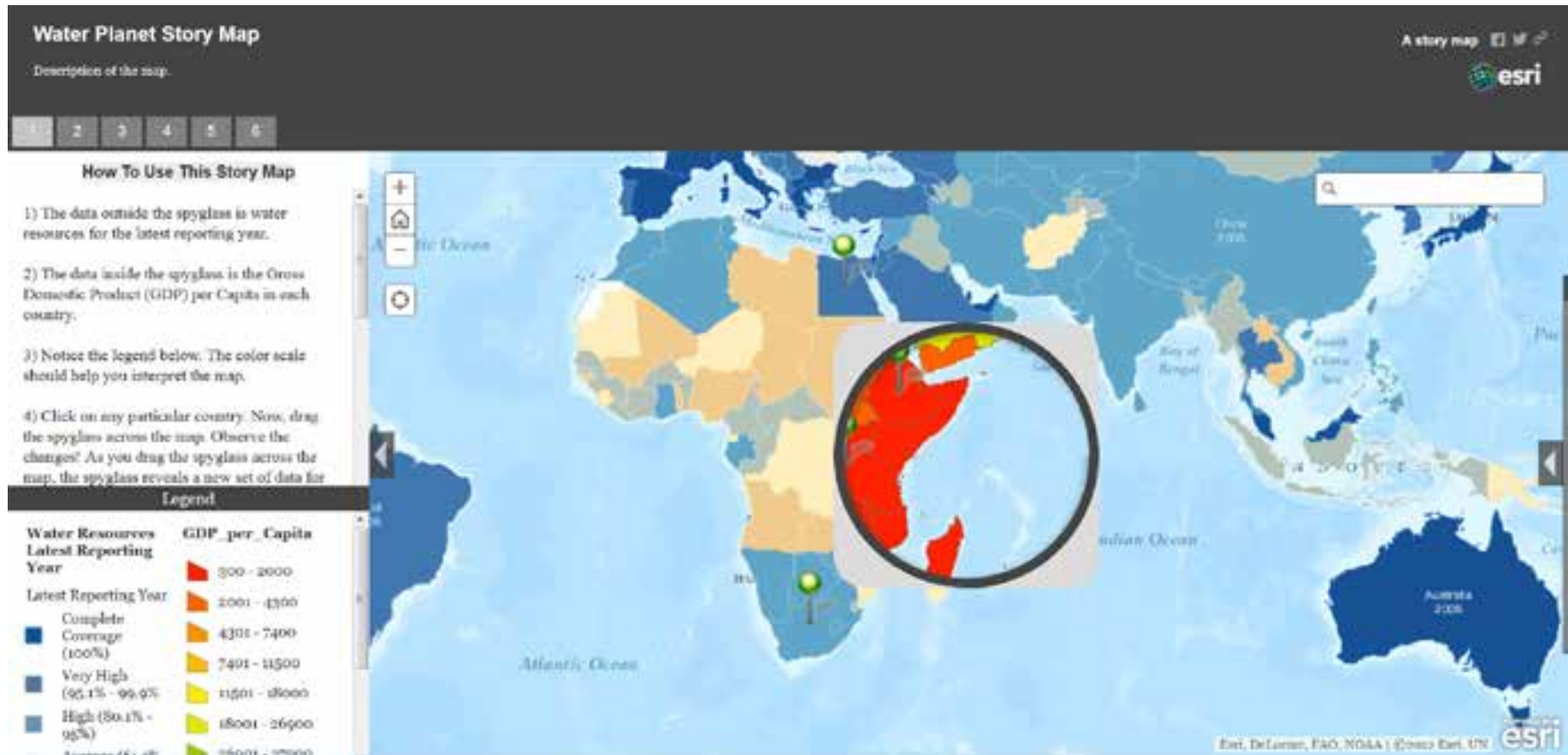
Maxime de Zeeuw, Charlie Henriquez and Andreas Spanos

Naples (3-6ft)

Hurricane Wilma hit just south of Naples as a category 3. It was the first major hurricane to hit the Naples area in over 40 years. Most of the Naples area has been built under strict hurricane building codes so there was little damage to structures; however, the strong winds knocked down many trees and threatened a majority of the light objects outdoors. <http://www.naplesinsider.com/NaplesArea/HurricaneInformation.htm>

← Naples (3-6ft) Surge Bay (1-3ft) Palm 422 (Hurricane Wilma) Lake Okechobee (3-19ft) Storm (2-6ft) Port St. Lucie (3-11ft) Palm 422 (Hurricane Wilma) Palm 422 (Hurricane Wilma) Palm 422 (Hurricane Wilma) Camera

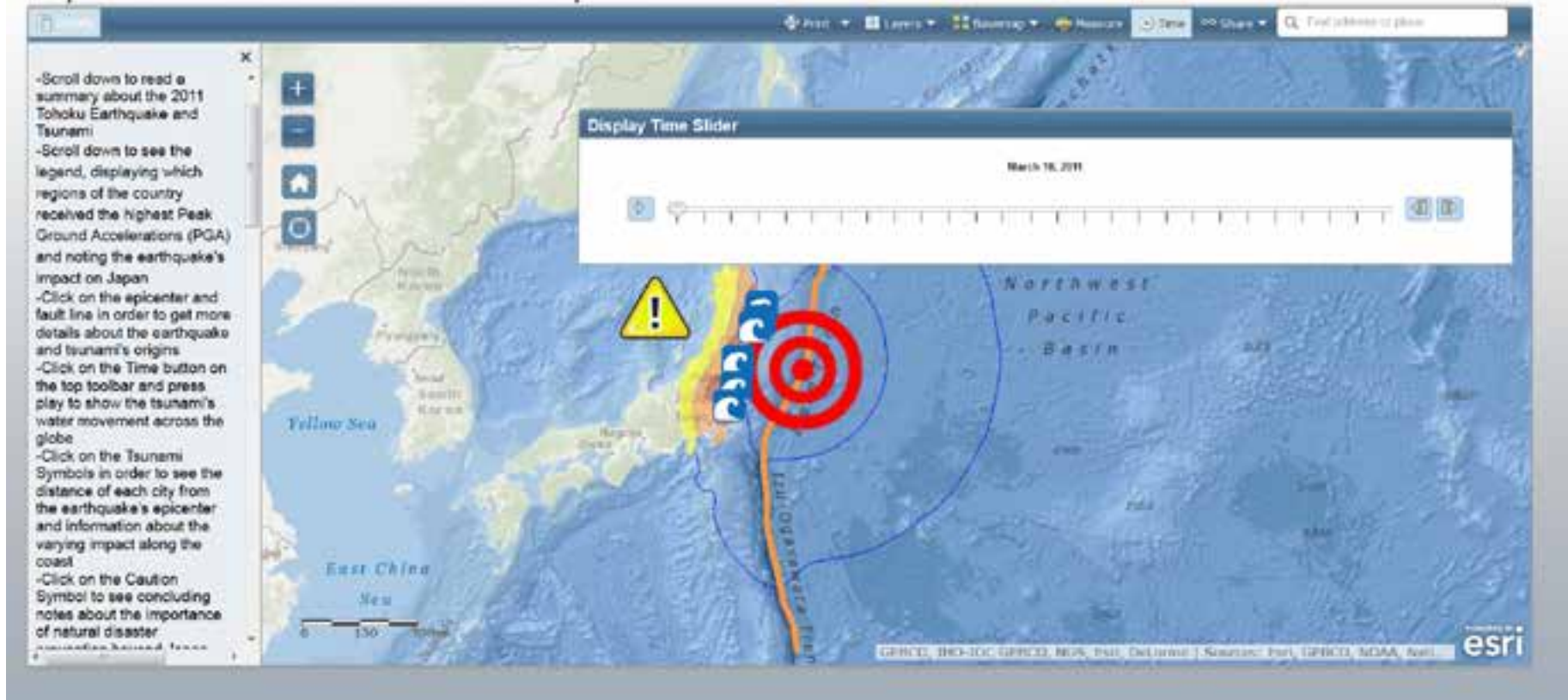
# What Is the Purpose of a Story Map?



# How Do You Build a Story Map?



## Japan 2011 Tsunami & Tohoku Earthquake



# Story Maps: Student Work



## Ganges River (with live data):

<http://www.arcgis.com/apps/MapTour/index.html?appid=6223bb59a5684ae18fd557a04eb0ac01&webmap=decf780d47fe44dc90b07455980580cb>

## Japanese Tsunami (with time-series):

<http://www.arcgis.com/apps/OnePane/basicviewer/index.html?appid=4430017816004a98ae41bdf7e490242f>

## Country GDP vs. Water Usage (with spy glass):

<http://www.arcgis.com/apps/StorytellingSwipe/?appid=0293f4c6a84f48c3bc33941d7e65a42c#>

## Hurricane Wilma:

<http://www.arcgis.com/apps/MapTour/index.html?appid=461710cda7bb4cbfa00ea56b78121f2f&webmap=725fcf1b46b04e9aad7d1cba737d8650>

## Water Quality in Africa (with color coded pinpoints):

<http://www.arcgis.com/apps/MapTour/index.html?appid=fac11209bbbc4a38a47cd970a15d4447&webmap=bd58917941074150b097e93bcc9ac1fd>

# Story Maps: Teaching as Experience



**KEEP  
CALM  
AND  
EXPECT the  
UNEXPECTED**



**USC**Dornsife

Dana and David Dornsife  
College of Letters, Arts and Sciences

*Spatial Sciences Institute*

# Story Maps: Lessons Learned



Required components	Comments	Grade (use whole points only)	Out of
Story n Relevant topic (water issue) n Logical story progression			40
Text n Quality of text n References (at least 5)			20
Spatial Data n Type of spatial data used n Quality of spatial data			20
Cartography n Accurate map representation n Visual quality of maps			20
Supporting Content n Creative use of content n Different types of content			20
User Experience n Quality of presentation n Ease of use			20
Participation n Attendance in lab n Group participation			40
<b>Total out of 180:</b>			<b>180</b>



# Story Maps: Moving Forward



**The Ganges River**

This story map shows the negative effects of population, agriculture, and pollution around the Ganges River Basin has on the Ganges River.

esri