

Federal GIS Conference

February 9–10, 2015 | Washington, DC



ArcGIS for Intelligence

Natalie Feuerstein & Sarah Schwoppe

Global Challenges

A Dynamic World Creates Complex Intelligence Challenges

Pandemics

Famine and Drought

Natural Disasters

Displaced Persons

Civil Unrest

Political Crisis

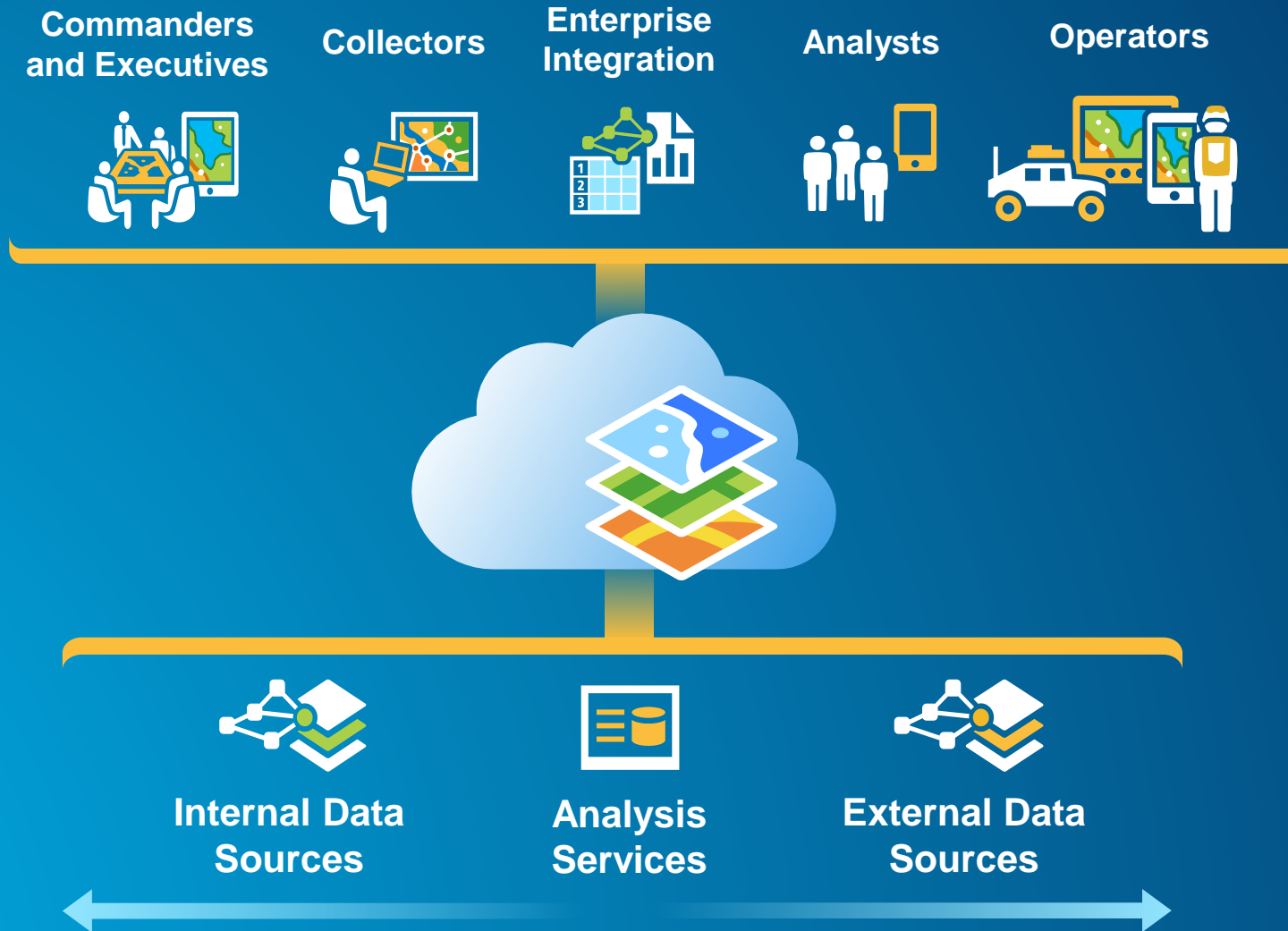
Organized Crime

Terrorism

Adversaries

... And Impacts National Security

A Single Powerful Geospatial Platform



Collection and Integration

Exploitation and Analysis

Information Sharing



Delivering Solutions

Maps



Apps



Platform Configurations



Supporting Materials



Collection and Integration

Exploitation and Analysis

Information Sharing



Demo

Collection and Integration

The Destruction of Dar'a (Syrian Civil War)



The first p
originatec
authoritie
engulfed
neighbori
remains c
regular di
2013, cla
the main l
opposition's access to suppli

1. Enter Information

NAME

PRIORITY LEVEL

ANALYST

FIELD INSPECTOR

DATE ASSIGNED TO ANALYST

Collection and Integration

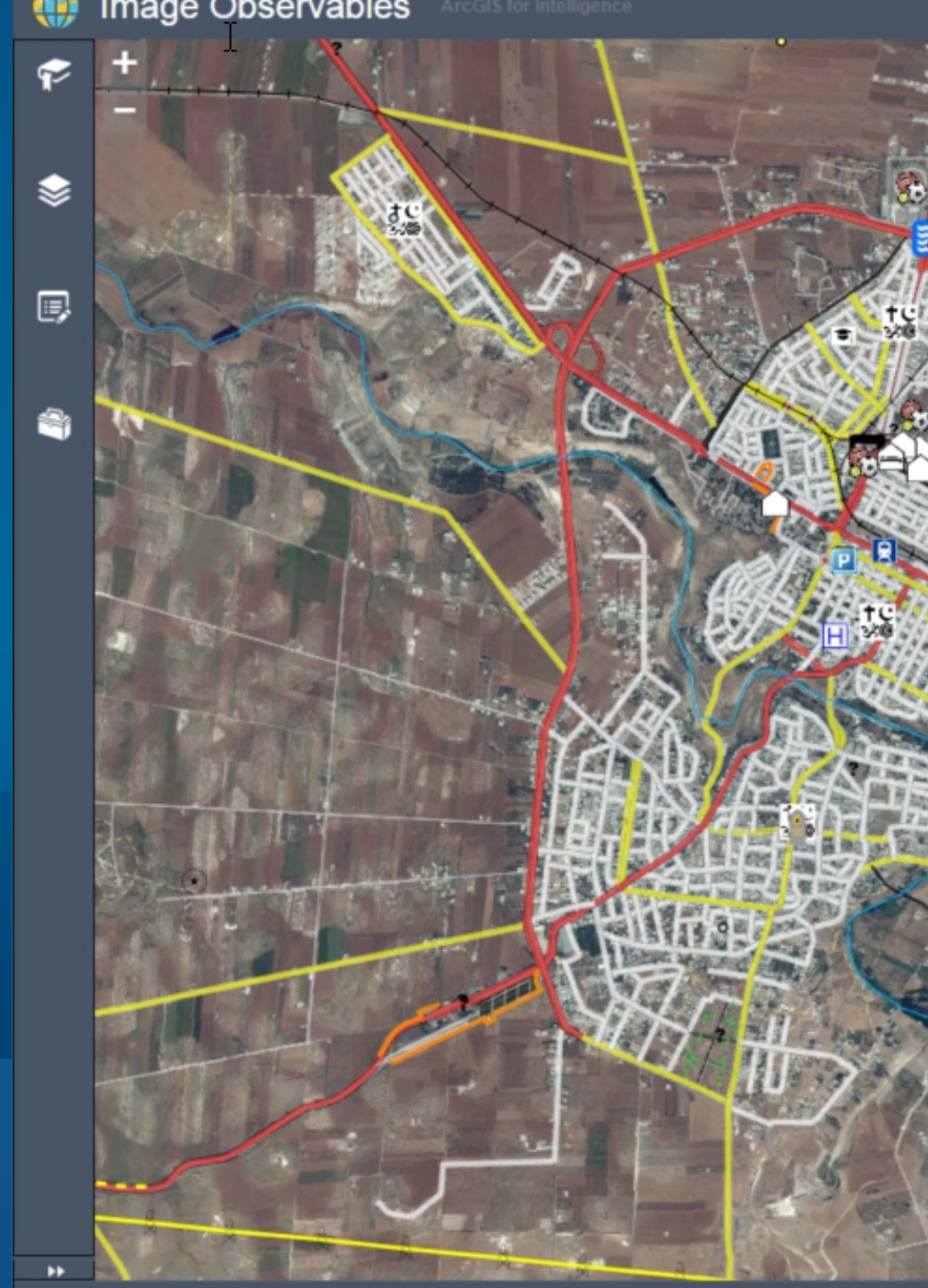
Exploitation and Analysis

Information Sharing



Demo

Exploitation and Analysis



Collection and Integration

Exploitation and Analysis

Information Sharing



Demo

Information Sharing

FILE TOOLS VIEW WIDGETS

Dar'a, Syria

City in southwestern Syria, just north of the border with Jordan. It is the capital of Daraa Governorate, historically part of the ancient Hauran region. The city is located about 90 kilometres (56 mi) south of Damascus on the Damascus-Amman highway, and is used as a stopping station for travelers. Nearby localities include Umm al-Mayazen and Nasib to the southeast, al-Naimeh to the east, Othman to the north, al-Yadudah to the northwest and Ramtha, Jordan to the southwest.

According to the Syria Central Bureau of Statistics, Daraa had a population of 97,969 in the 2004 census. It is the administrative center of a nahiyah ("sub-district") which contains eight localities with a collective population of 146,481 in 2004. Its inhabitants are predominantly Sunni Muslims.

[Source](#)

Total Damaged Collected

558

Dar'a Damage Assessment-C

ArcGIS for Intelligence Solutions

Maps

[Industry Focused Maps and Apps](#)

Apps

[GitHub Repositories: GP Tools, Widgets, Symbology, and more](#)

Platform
Configurations

[GeoNet Community Forum](#)

Supporting
Materials

[ArcGIS Defense and Intelligence Blog](#)



Understanding our world.