

**Federal GIS Conference**

February 9–10, 2015 | Washington, DC



# ArcGIS Pro: An Overview

James Sullivan

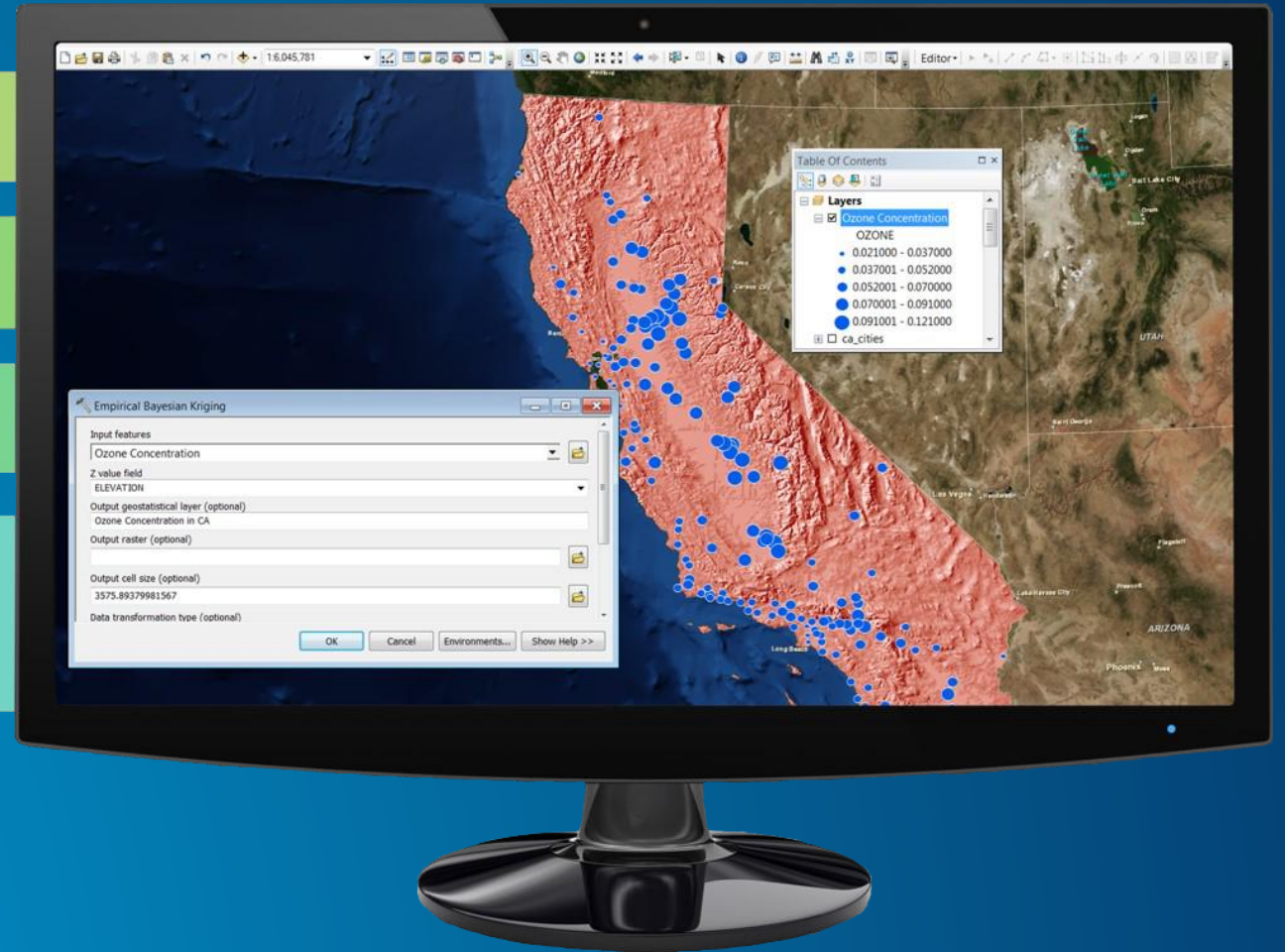
What you already know...

Manage your Data

Perform Advanced Analysis

Model and Automate Workflows

Display your results on Professional Quality Maps



What you get with  
ArcGIS Desktop



ArcGIS for Desktop  
ArcMap & ArcGIS Pro

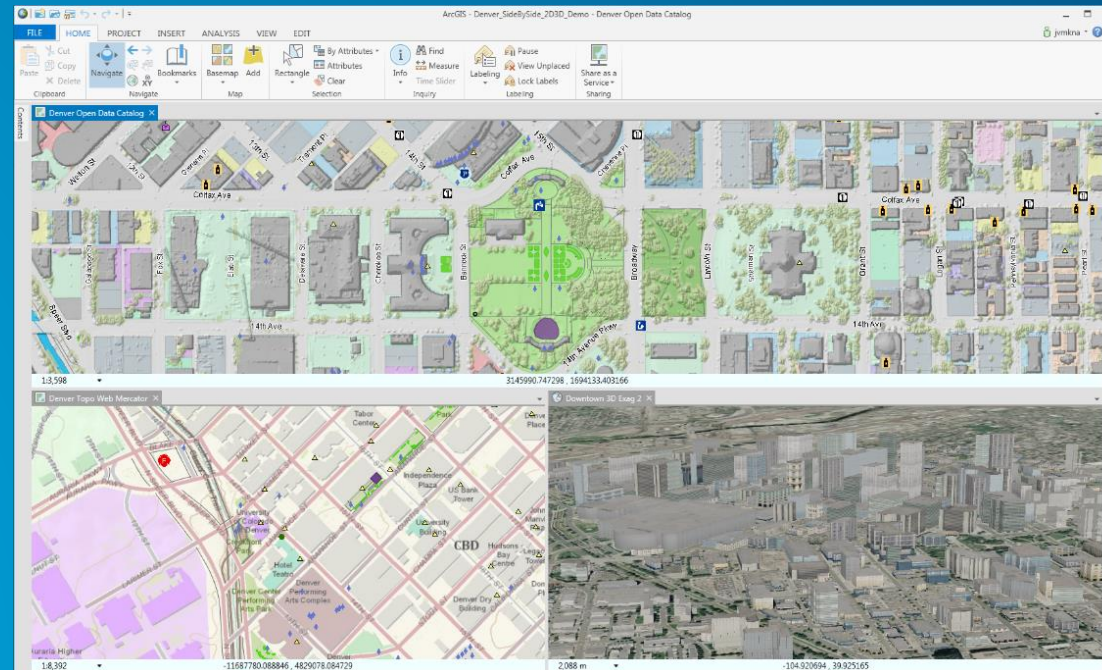


\*Desktop Users now have  
ALL the Online Apps

Why ArcGIS PRO?

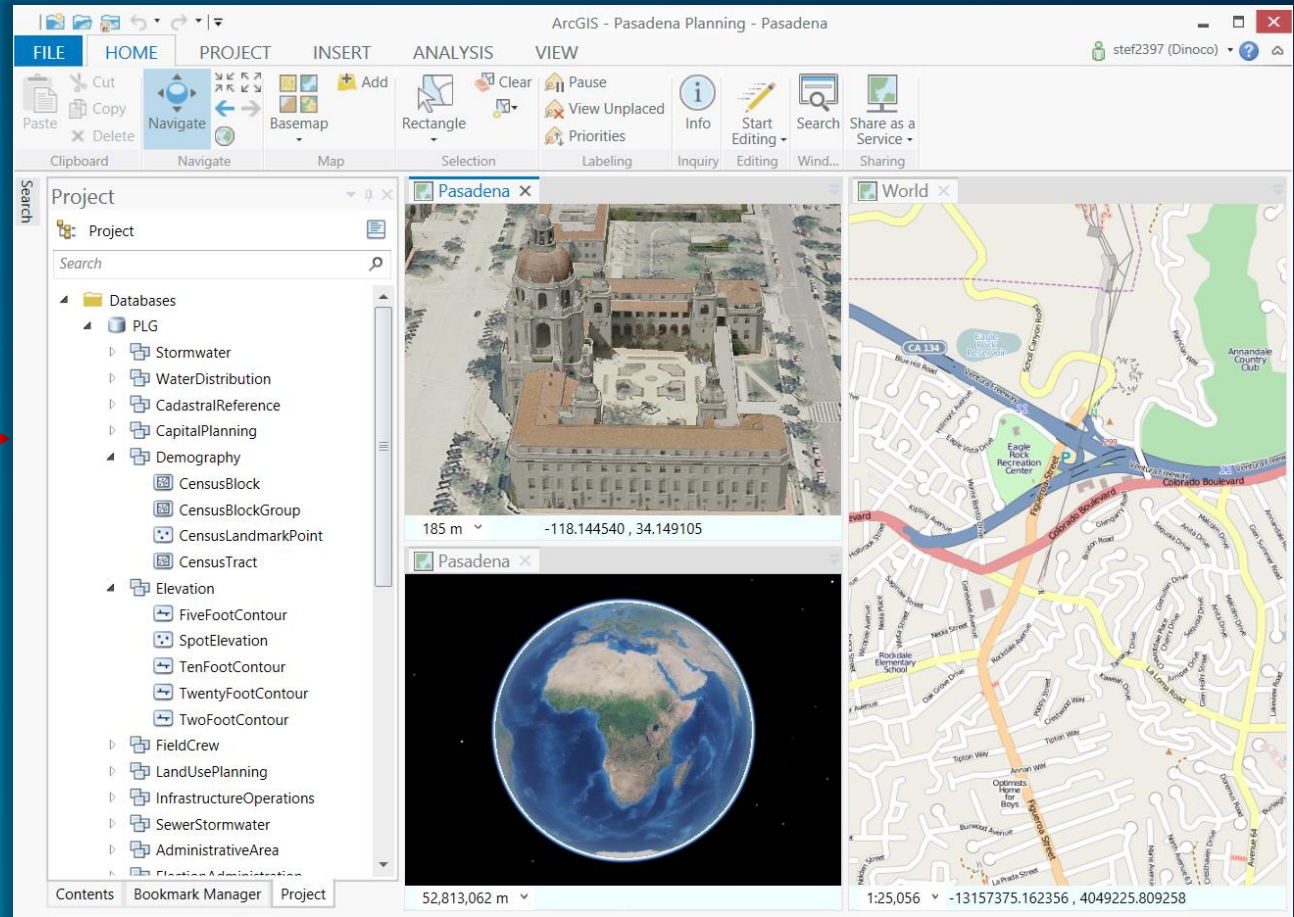
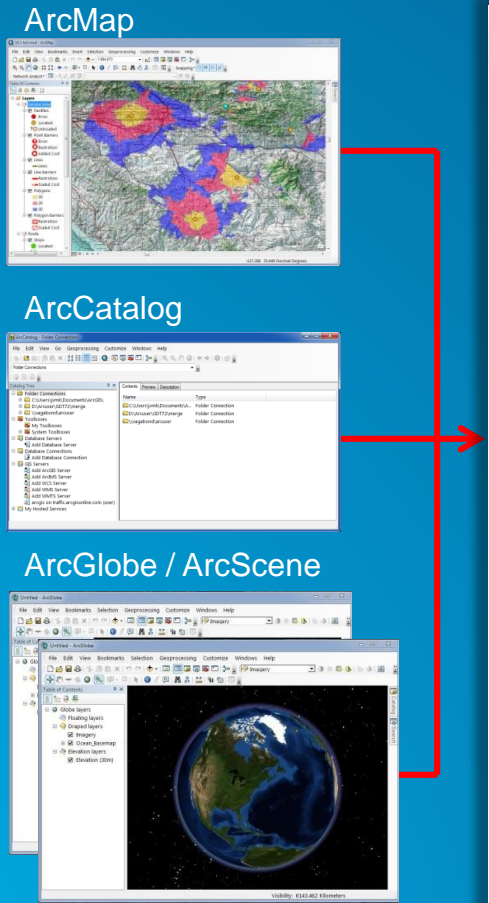
# Vision

*The next generation ArcGIS desktop application for the GIS community who need a clean and comprehensive user experience which is incredibly fast and efficient, and that will increase productivity for integrated 2D and 3D workflows supporting visualization, data management, and spatial analysis.*



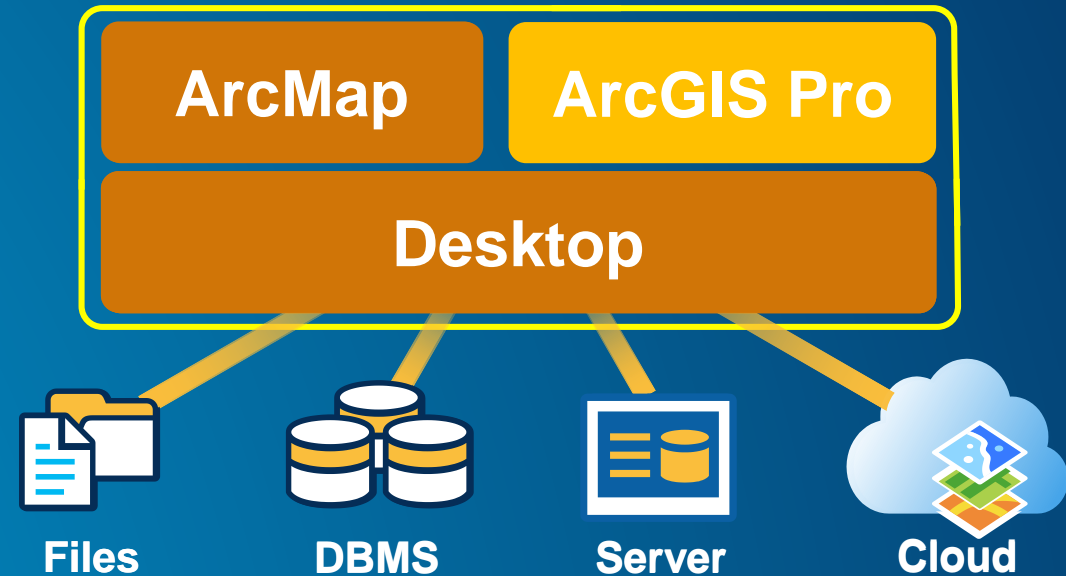
# Application fusion

Single, always responsive application



# Is ArcGIS Pro a replacement for ArcMap? No

- It's a new application, not a replacement
- ArcMap continues to get better
- ArcMap and Pro run side by side





# Top ideas

[ideas.arcgis.com](http://ideas.arcgis.com)

Desktop

Export to Excel

64 Bit

Multiple  
Layouts

Reorder Fields

The screenshot shows the ArcGIS Ideas website interface. At the top, there is a search bar and a login link. The main content area features a large banner with a woman pointing at a diagram titled "Your Ideas in Motion". Below the banner, there are several sections: "Recent Ideas" with a list of ideas and their status, "Under Consideration", and "Recently Implemented". On the right side, there is a "User Participation" table and a "Leaderboard" section.

	Today	Total
Ideas	3	8056
Votes	94	131462*

\*Updated hourly

Top Contributors to Ideas Site!			
	Ideas	Votes	Comments
summar	1	3	0
aidseank	1	1	0
Chaleboy02	1	1	0

\*Updated weekly



Researcher

Designer

Cartographer

GIS Analyst

Manager

Editor

Who is ArcGIS Pro for?

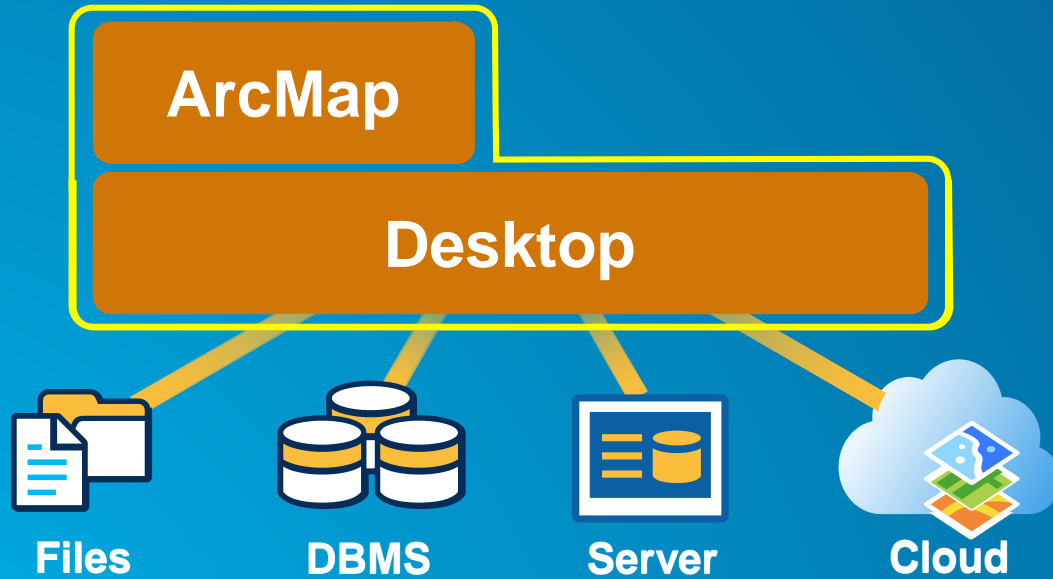
Geo-Centric Information Worker

Geo-Spatial Expert

Analyst

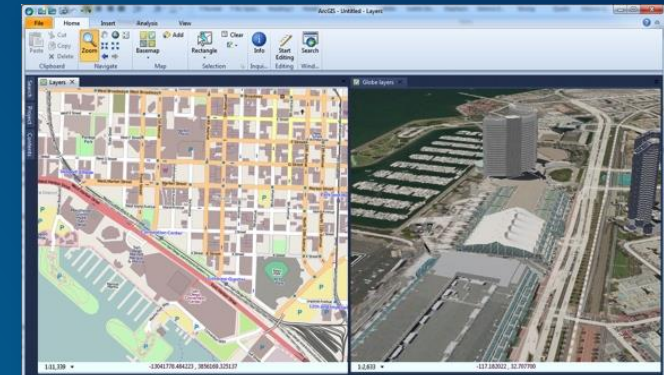
Image Analyst

# Desktop 10.3



- ... Continues to Improve and Evolve

# Desktop 10.3



Files



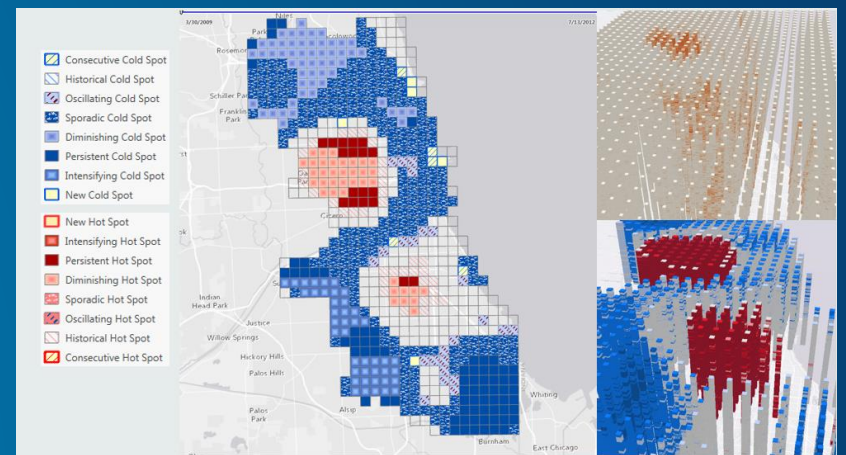
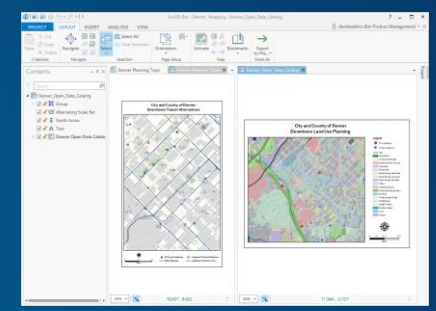
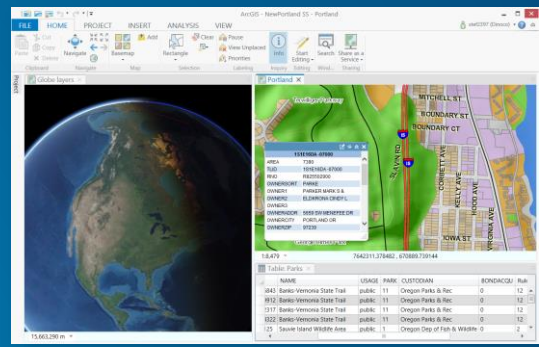
DBMS



Server

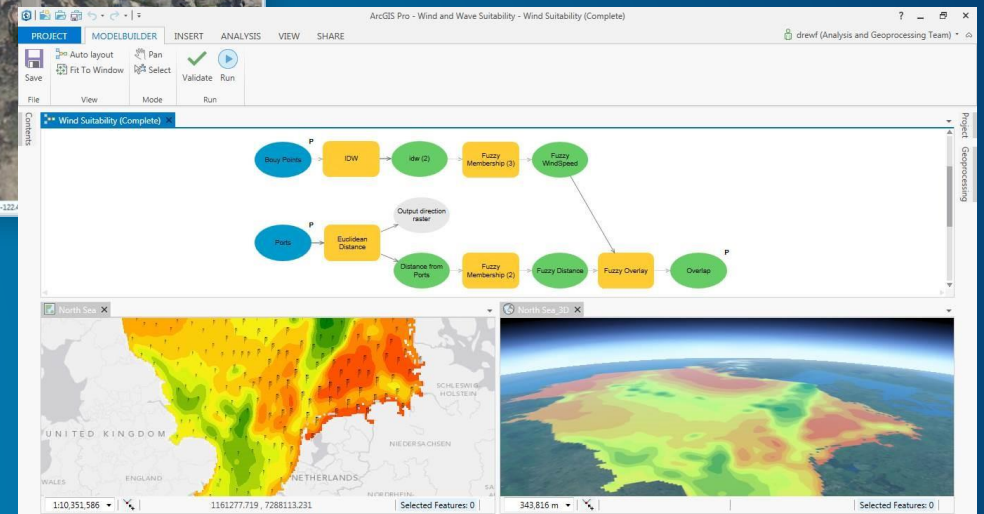
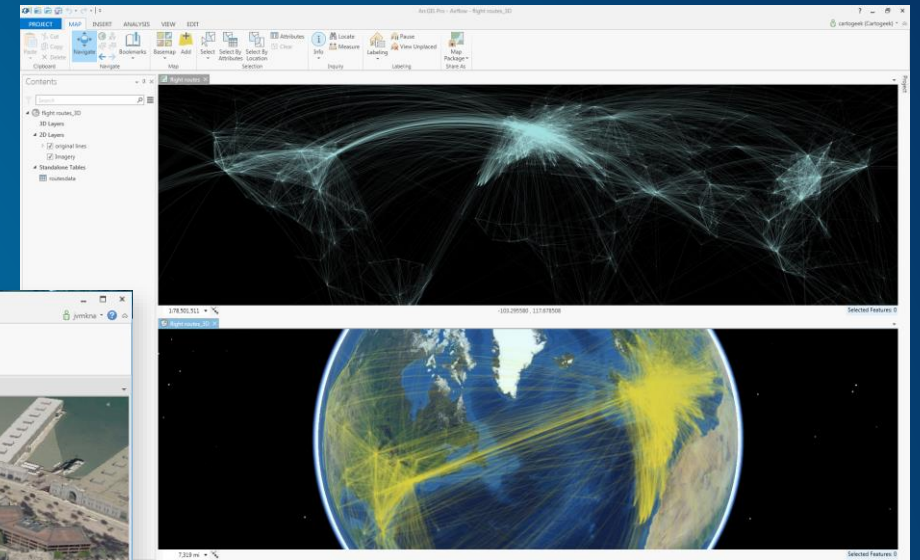
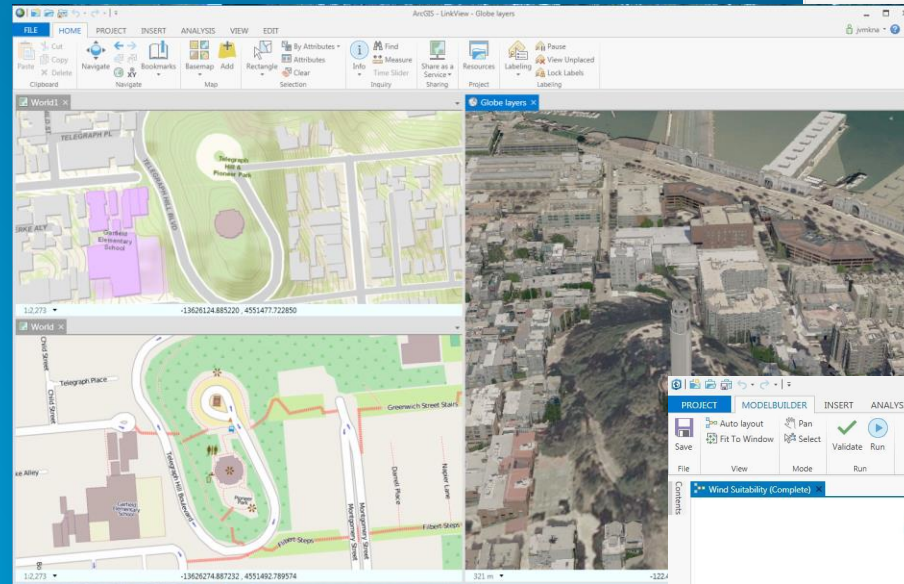


Cloud

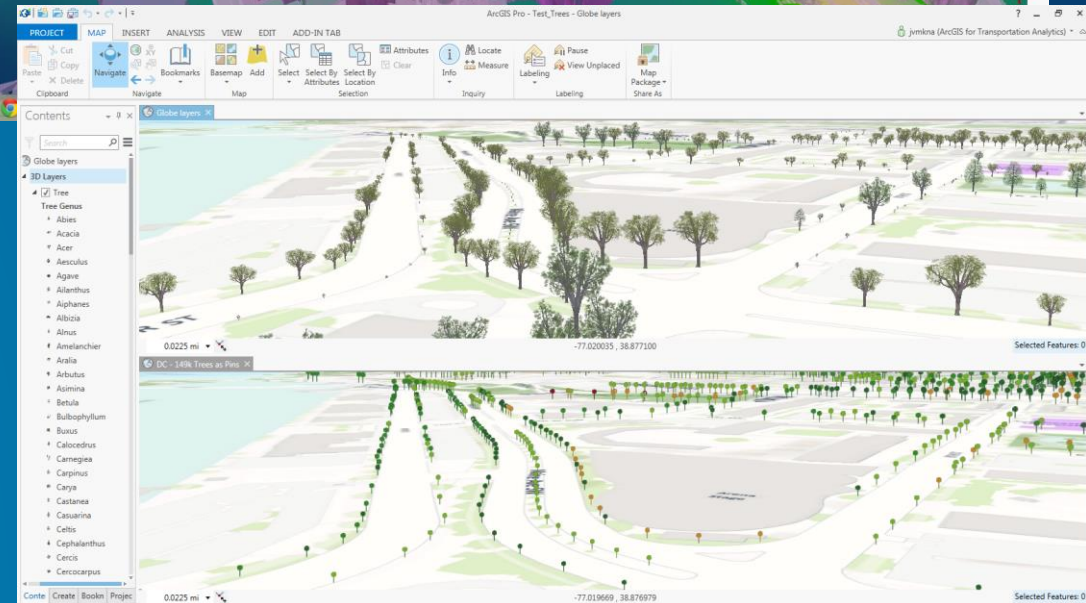
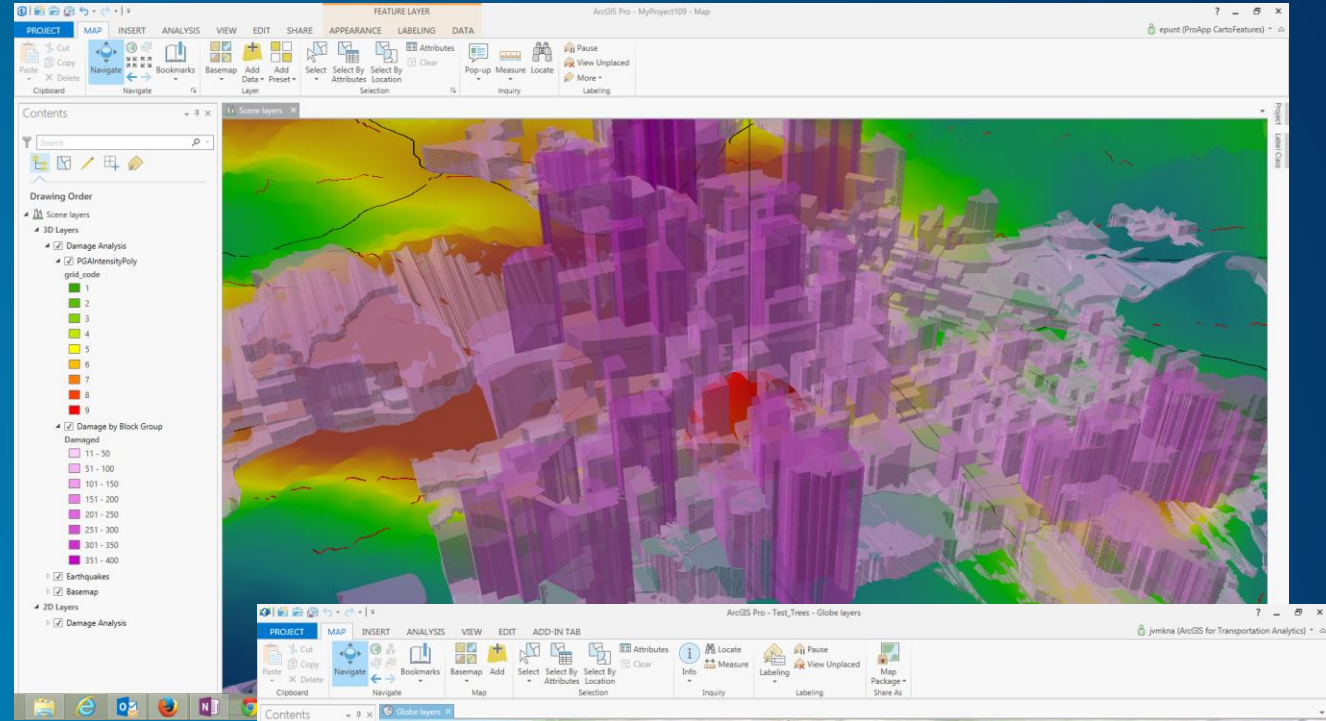


... Continues to Improve and Evolve

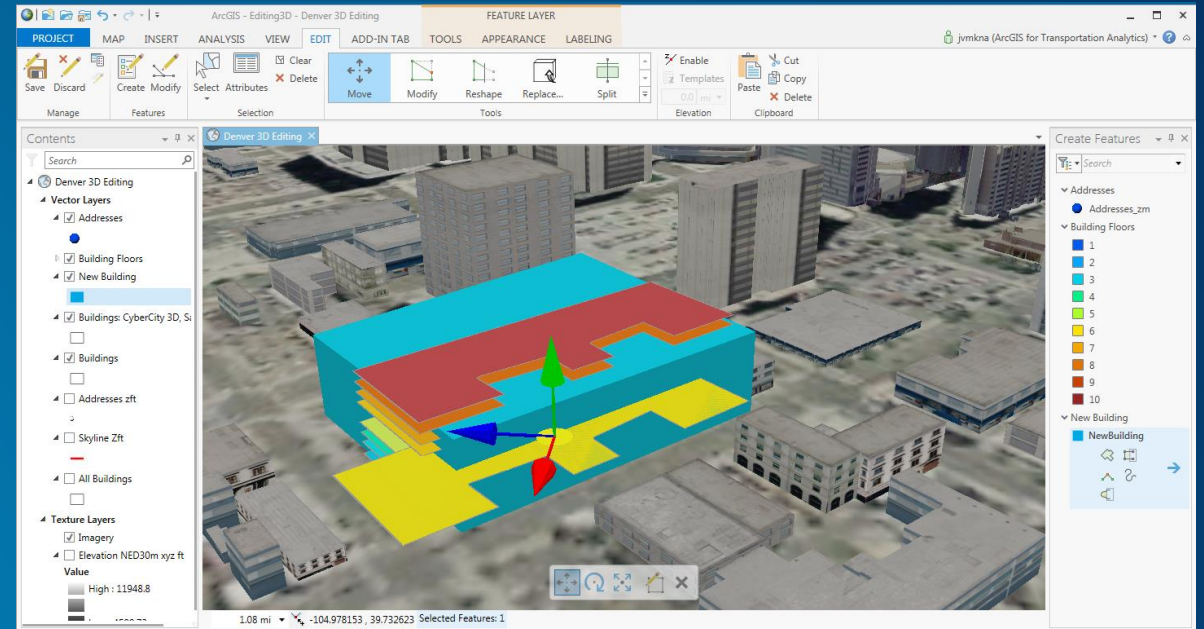
- Faster
- 2D and 3D
- Powerful



- 64 Bit, multi-threaded
- Always responsive application
- Simplified contextual user interface
- Integration with ArcGIS Online
- New, fast, 2D/3D graphics engine
- Integrated 2D/3D experience
- Enhanced map layout capability
- Project centric workflows
- Simple search and query



- Powerful analysis
- Editing in 2D and 3D
- Simpler data modeling
- Integrated with Esri solutions
- Tasks - guiding workflows
- Improved help system
- Web based installation and automatic updates
- Simplified licensing model
- Customization (Python and Net)

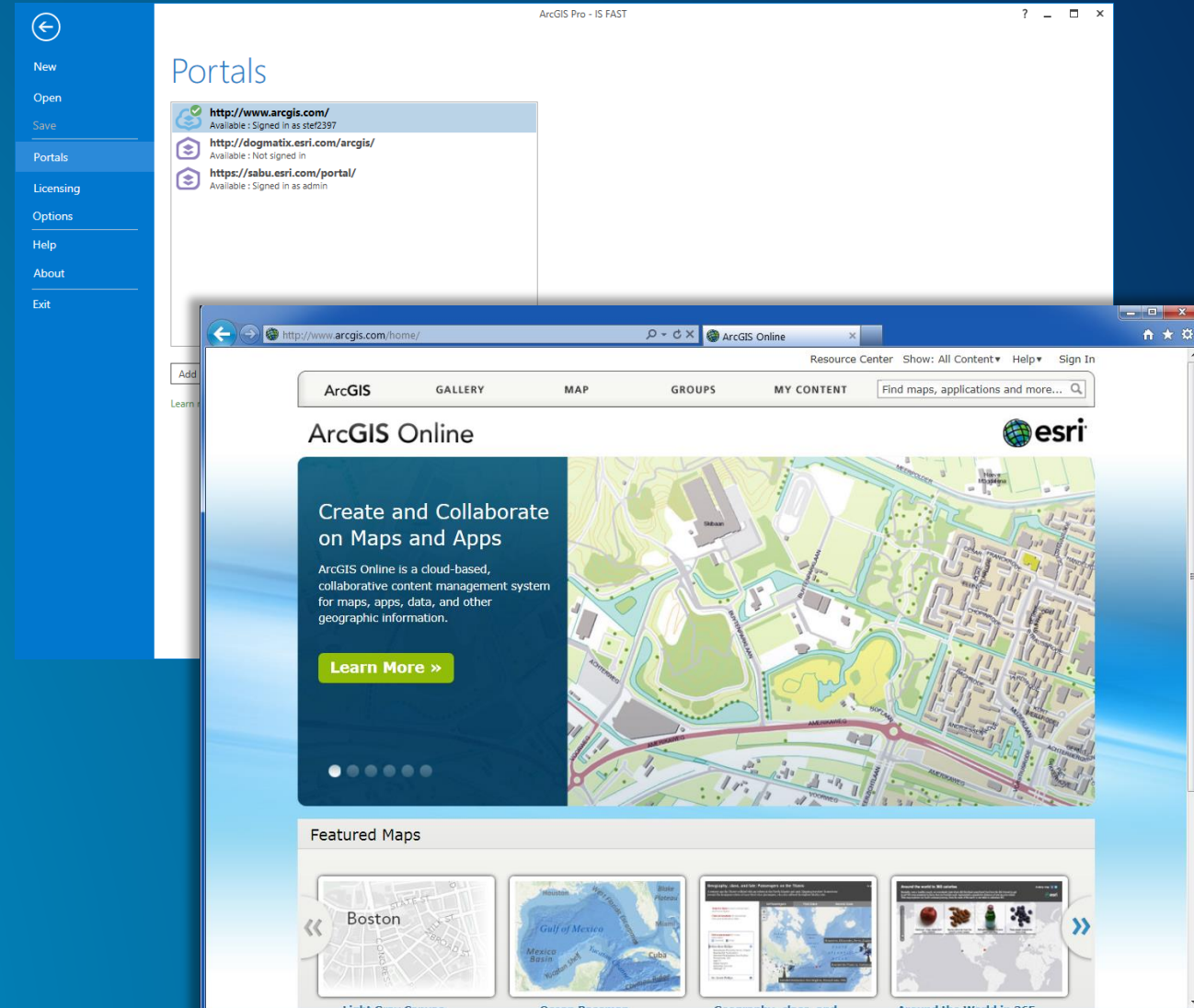


**DEMOS**



# ArcGIS Pro in the Platform

- **Tight integration with ArcGIS Online and Server**
  - Powerful client to the ArcGIS Platform
  - Premier authoring application for Online content
  - Online as the content management system for Pro
- **Provisioning content for Runtime Apps**



Faster

2D and 3D

Powerful but easy



What you get with  
ArcGIS Desktop



ArcGIS for Desktop  
ArcMap & ArcGIS Pro



\*Desktop Users now have  
ALL the Online Apps

What you get with  
ArcGIS Desktop



ArcGIS for Desktop  
ArcMap & ArcGIS Pro



\*Desktop Users now have  
ALL the Online Apps

# Many Apps - Not just Desktop



Collector for ArcGIS



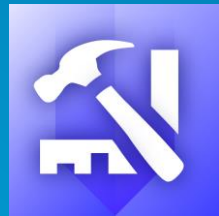
Operations Dashboard for ArcGIS



Explorer for ArcGIS



ArcGIS Viewer



Web AppBuilder for ArcGIS



ArcGIS Open Data



Story Maps for ArcGIS



Esri Maps for Office



ArcGIS Templates

My essential mapping apps



Excel



PowerPoint



SharePoint



Salesforce

Esri Maps for



Dynamics CRM



MicroStrategy

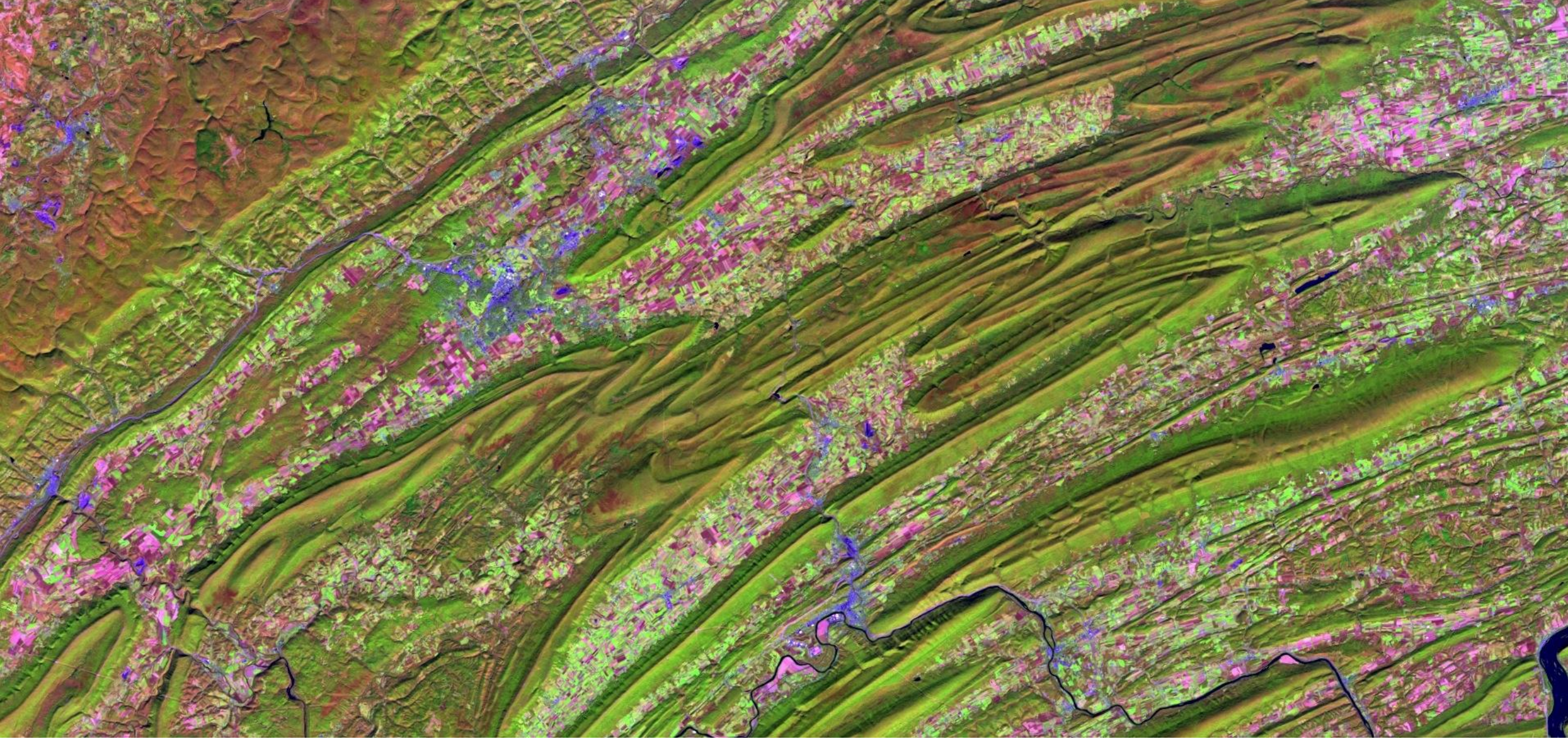


Cognos



SAP

Mapping my business data

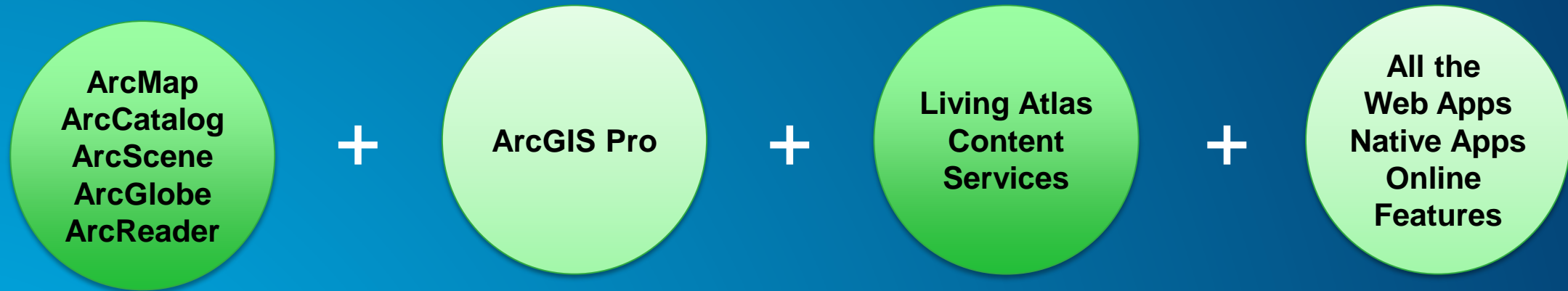


**ArcGIS for Desktop includes an Atlas**

Providing continuous observation of  
the earth surface updated everyday

# When Own Desktop

Buying into ArcGIS at the Professional Level



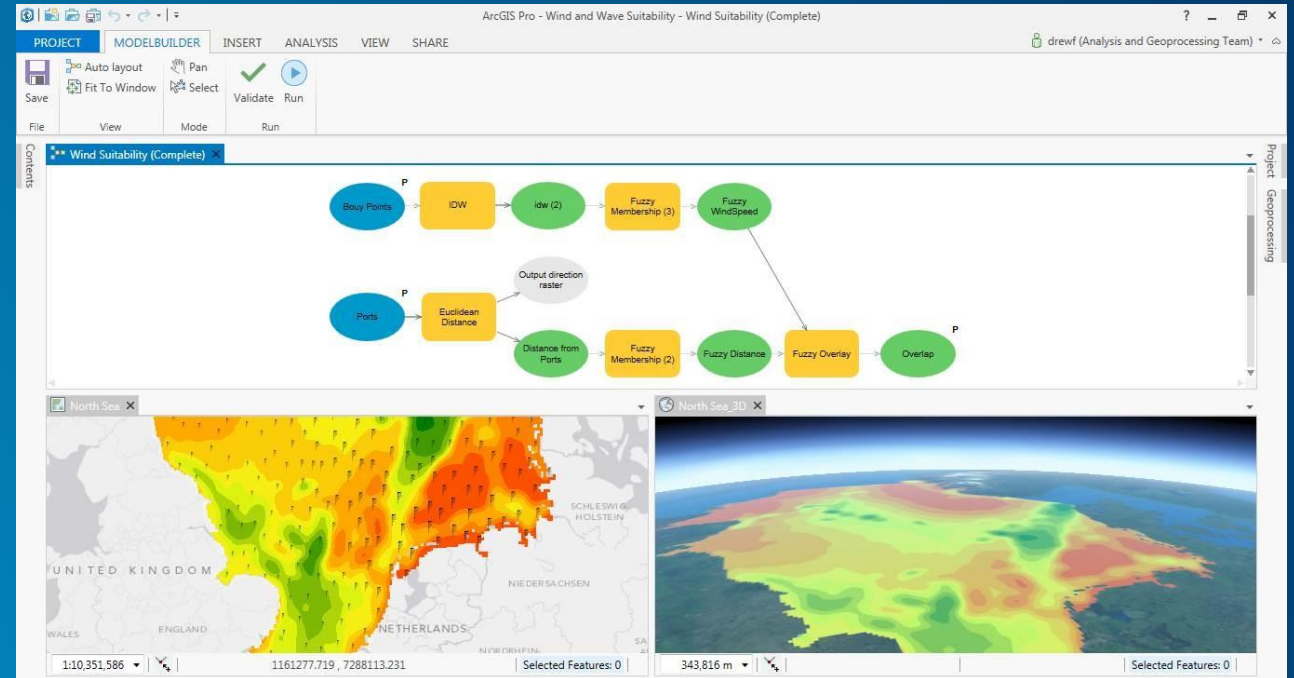
## ArcMap and ArcGIS Pro

- ArcGIS Pro runs side-by-side with ArcMap
- Map(.mxd), Globe(.3dd) and Scene(.sxd) documents can be imported to Pro
- ArcGIS Pro and ArcMap can interoperate at the data and service level
- Python scripts and script tools run in ArcGIS Pro with minor exception.
- New .NET API for Addins and extensions



# Familiar Extensions

- Spatial Analyst
- **3D Analyst**
- Network Analyst
- Geostatistical Analyst
- Data Reviewer
- Workflow Manager



# ArcGIS Pro Customization

UI Customization with Task

Automation and Execution with Python

Extensibility with New .NET API

# How are Licenses managed in ArcGIS Online?

- Access controlled by
  - “Named User” entitlement of ArcGIS Pro
  - Online Organization or Portal
- Organization Admin can:
  - Grant access of Pro by Named-User
  - Control product level and extension
  - Re-assign access as needed
- Pro User can:
  - Download and install ArcGIS Pro
  - Sign-in at startup
  - Go offline if needed

The screenshot shows the 'Managing ArcGIS Pro Licenses' page for an organization named 'Energy'. The page displays a summary of license counts for various products and a list of members with their assigned licenses.

Product	ArcGIS Pro Basic	ArcGIS Pro Standard	ArcGIS Pro Advanced	Spatial Analyst	3D Analyst	Network Analyst	Geostatistical Analyst	Data Reviewer	Workflow Manager	Data Interoperability
Licenses	50	50	50	100	100	100	100	100	100	100
Available	49	48	43	91	93	91	93	93	93	93

**Members** [SELECT ALL](#) Search by Name

Click to select a member.

Name	Username	Licensed for	Last Used ArcGIS Pro
AGS	AGS_Test_energy	Configure licenses	
Kuldeep Mathur	analysisuser	Configure licenses	
Spatial Analytics	analytics1	Configure licenses	
Anargyros Tomaras	Anargyros_energy	Pro Standard + 2 Extensions	
Andreas Ulmer	andreas	Pro Standard + 2 Extensions	
Andreas	Andreas_energy	Configure licenses	
Andreas 'publisher' Ulmer	andreas_pub	Configure licenses	
Andrew Stauffer	andrew_hive	Configure licenses	
Andy MacDonald	Andy_energy	Configure licenses	
Ankur	Ankur_energy	Configure licenses	
Kuldeep Mathur	apitestuser	Pro Basic	
Apurva Shah	Apurva_energy	Configure licenses	
Anne Reuland	areuland_energy	Pro Advanced + 7 Extensions	

Click to remove a selected member.

Name	Username
------	----------

[CONFIGURE](#) [CLEAR](#)

## To Learn More

- **In D.C.**
  - **Showcase**
  - **Tech Sessions**
  - **Hands-On Training**
  
- **In the Office**
  - **Forums and Tech Support**
  
- **Training**
  - **Web Course: Getting Started with ArcGIS Pro**
  - **Instructor Lead Course - Introduction to ArcGIS Pro for GIS Professionals (2-Day)**

**Federal GIS Conference**

February 9–10, 2015 | Washington, DC



**Don't forget to complete  
a session evaluation form!**

**Federal GIS Conference**

February 9–10, 2015 | Washington, DC



# **Print your customized Certificate of Attendance!**

Printing stations located on L St. Bridge, next to registration

## Federal GIS Conference

February 9–10, 2015 | Washington, DC



# GIS Solutions EXPO, Hall D

Monday, 12:30pm – 6:30pm

Tuesday, 10:45 AM–4:00 PM

- Exhibitors
- Hands-On Learning Lab
- Technical & Extended Support
- Demo Theater
- Esri Showcase

**Federal GIS Conference**

February 9–10, 2015 | Washington, DC



## **Networking Reception:**

# ***National Museum of American History***

Tuesday, 6:30 PM–9:30 PM  
Bus Pickup located on L Street



**Federal GIS Conference**

February 9–10, 2015 | Washington, DC



## **Interested in diving deeper into Esri technology?**

Add a day to your Fed GIS experience and register to attend the Esri DevSummit Washington DC. Stop by the registration counter to sign up.



Understanding our world.