

Federal GIS Conference

February 9–10, 2015 | Washington, DC



ArcGIS Apps: An Overview

Chris LeSueur – Product Manager

Marisa Cowdry – NCMEC

Agenda

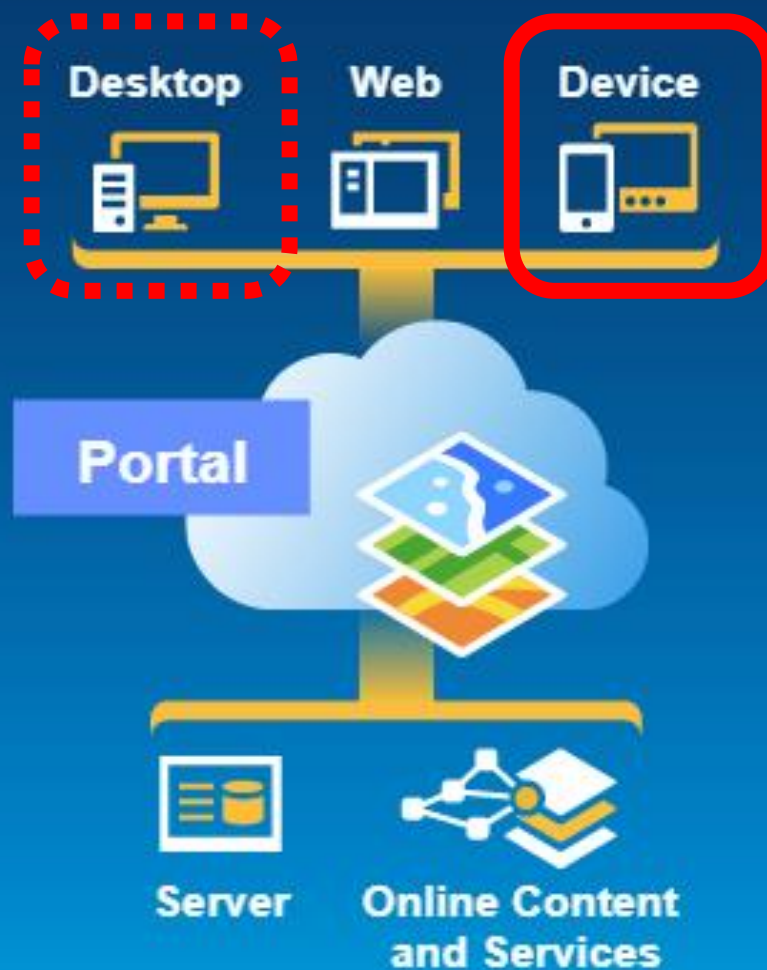
- **Apps Introduction**
- **Rugged Device Apps**
- **Essential Mapping Apps**
 - **Collector for ArcGIS**
 - **Demo: National Center for Missing and Exploited Children**
 - **Operations Dashboard**
 - **Explorer for ArcGIS**
- **Runtime SDKs**

ArcGIS

An Integrated
Web GIS Platform



Providing mapping, analysis, data management, and collaboration





Microsoft Office
Microsoft SharePoint
Microsoft Dynamics
SAP Business Objects
MicroStrategy
IBM COGNOS
Salesforce.com
plus an SDK framework



Apps for Everyone

a suite of easy to use apps that work on any device, anywhere, anytime

Rugged Device Apps



ArcPad

- Full Featured Mobile GIS App
- Ad-hoc data collection projects
- High accuracy GPS
- Configurable
- Custom forms
- Fully Disconnected
- Users typically need GIS Training



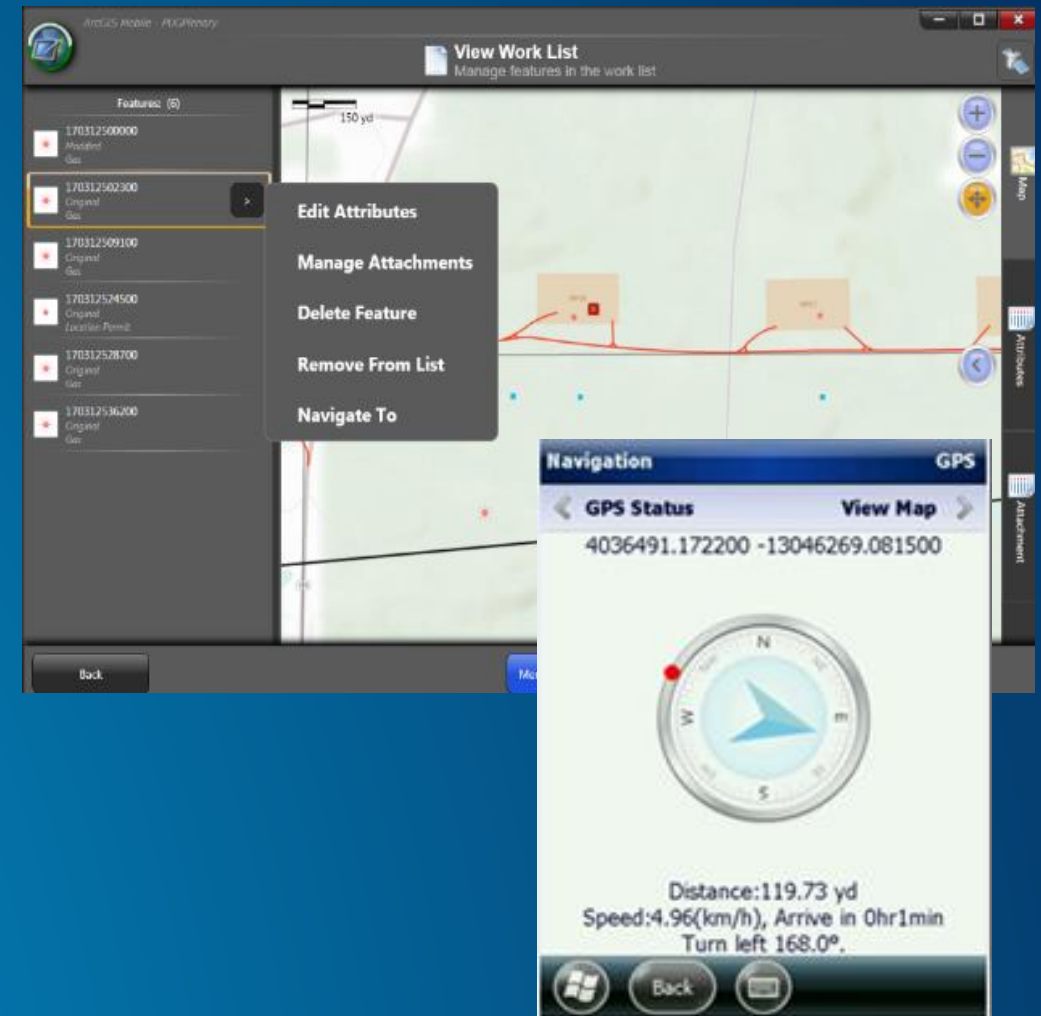
Windows 7/8 Laptops



Windows Mobile handhelds

ArcGIS for Windows Mobile

- Configurable workflows
- High accuracy GPS
- Custom forms
- Fully disconnected
- ArcGIS Online/ArcGIS Server Packaging and Deployment
- Users typically need little training
- Applications are extensible!



Windows 7/8 Laptops

Windows Mobile handhelds

Essential Mapping Apps



Collector for ArcGIS®



Operations Dashboard for ArcGIS®



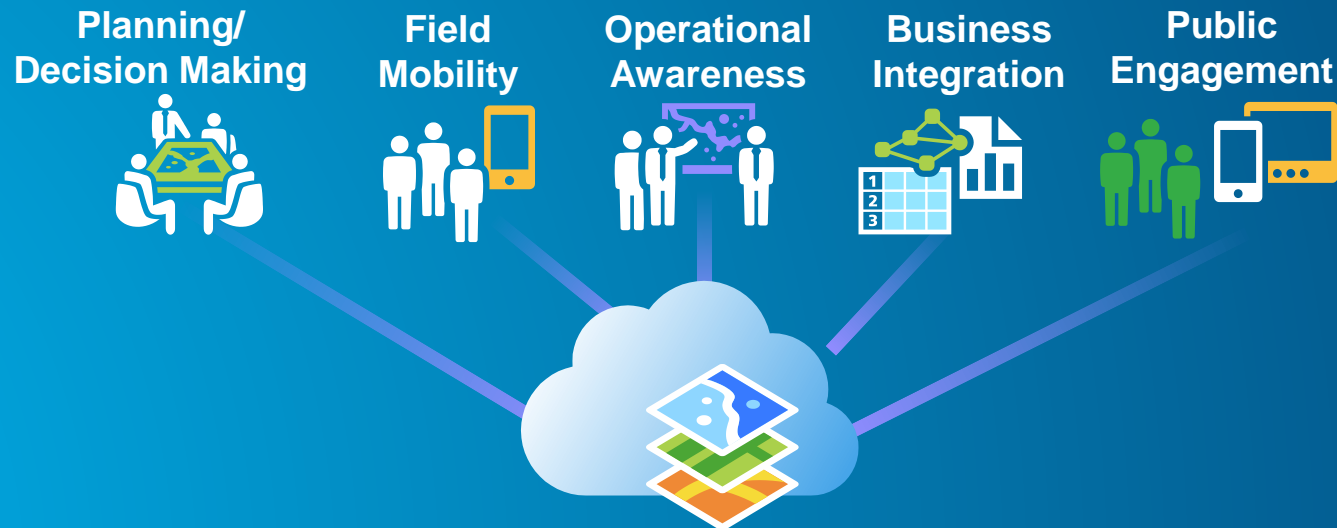
Explorer for ArcGIS®

Essential Mapping Apps

Drive adoption of the ArcGIS platform

Target a **specific customer need**

Intuitive and easy to use



Essential Mapping Apps

Configurable



Cloud and on-premises



Cross-platform



Collector for ArcGIS



What is Collector for ArcGIS?

- Use GPS to capture location
- Collect asset location and status
- Perform inspections and surveys
- Download maps to your device
- Fill out forms
- Capture photos and video



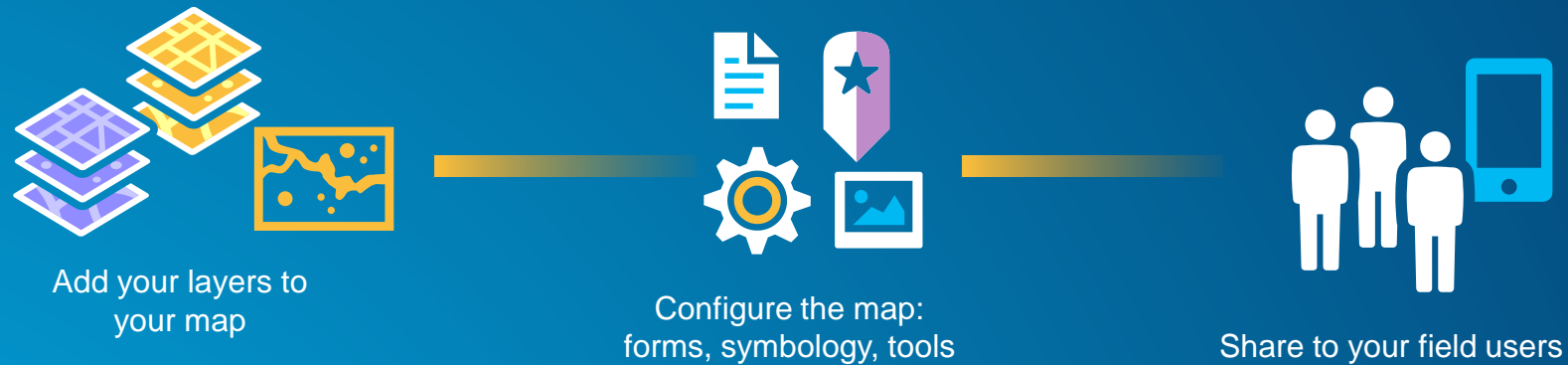
Collector for ArcGIS



- **What can you use it for:**
 - Collect asset locations and status
 - Ground-truth their GIS data
 - Make observations/conduct surveys
 - Replace paper-based forms/process



Tips for Making your map



- **Only show the fields that the end user needs**
- **Turn off tools the user won't use to do their job (measure, basemap etc)**
- **Use scale dependency to hide read only layers till they're needed**
- **Side load basemaps to device to save time**

Supported Download Workflows...

- Collector user can download map areas to their device



- Field managers can optimize that workflow by packaging and side-loading basemaps

Demo

**National Center for Missing
and Exploited Children**

The Collector Application at NCMEC



Nick Rodriguez
Sr. Assistant Case Man

Marisa Cowdry
Data Analytics Integration Specialist,
TSD

- Established in 1984, the National Center for Missing & Exploited Children® (NCMEC) is the leading nonprofit organization in the U.S. working with law enforcement, families and the professionals who serve them on issues related to missing and sexually exploited children. As part of its Congressional authorization, NCMEC has created a unique public and private partnership to build a coordinated, national response to the problem of missing and sexually exploited children, establish a missing children hotline and serve as the national clearinghouse for information related to these issues.

- In a National report completed by the State Department and published in 2002, Approximately **800,000** children younger than 18 were reported missing.
- In 2013, [there were 462,567 entries](#) for missing children under the age of 18 into the FBI's National Crime Information Center, also called NCIC.
- The National Center for Missing & Exploited Children® has assisted law enforcement in the recovery of more than **202,667** missing children since it was founded in 1984. Our recovery rate for missing children has grown from **62 percent** in 1990 to **97 percent** today.
- As of October 2014, the CyberTipline has received more than **2.8 million reports** of suspected child sexual exploitation since it was launched in 1998.

- Through Esri's ArcGIS online, ArcGIS Desktop, and Collector Application we are able to arm our people in the field with the ability to view geospatial data and conduct geospatial analysis. In addition, these tools equip them with a way to document new data collected in the field and swiftly push it back to Headquarters.



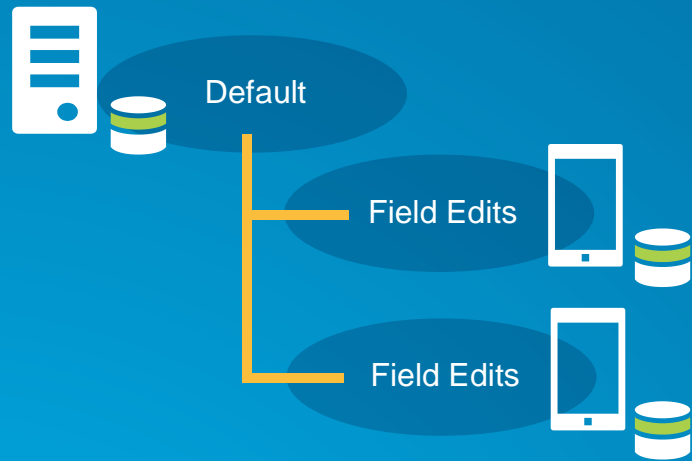


Live Demo

- The Esri Platform allows NCMEC to provide a visual representation of data that we collect and store.
- Allows us to analyze data in a geospatial way, which in return allows us to provide law enforcement better reports.
- Allows us to filter other data sets based on case development unlike ever before.
- Integrate data from multiple different sources and access them all in one place.
- Allows us to collect and document information obtained in the field in real time. In addition it allows us to preserve such information.
- Facilitates collaboration between the consultants

- Nick Rodriguez
Sr. Assistant Case Manager, MCD
National Center for Missing & Exploited
Children
(571) 482-3399
Nrodriguez@NCMEC.ORG
- Marisa Cowdry
Data Analytics Integration Specialist
National Center for Missing & Exploited
Children
703) 562-7619
Mcowdry@NCMEC.ORG

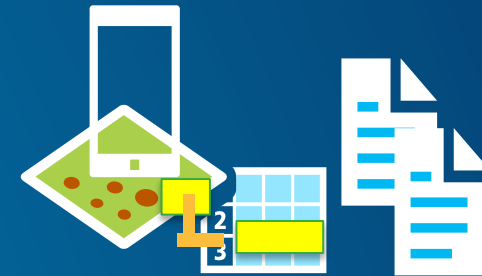
10.3 Release – Collector for ArcGIS



Versioned Editing



Editing Controls



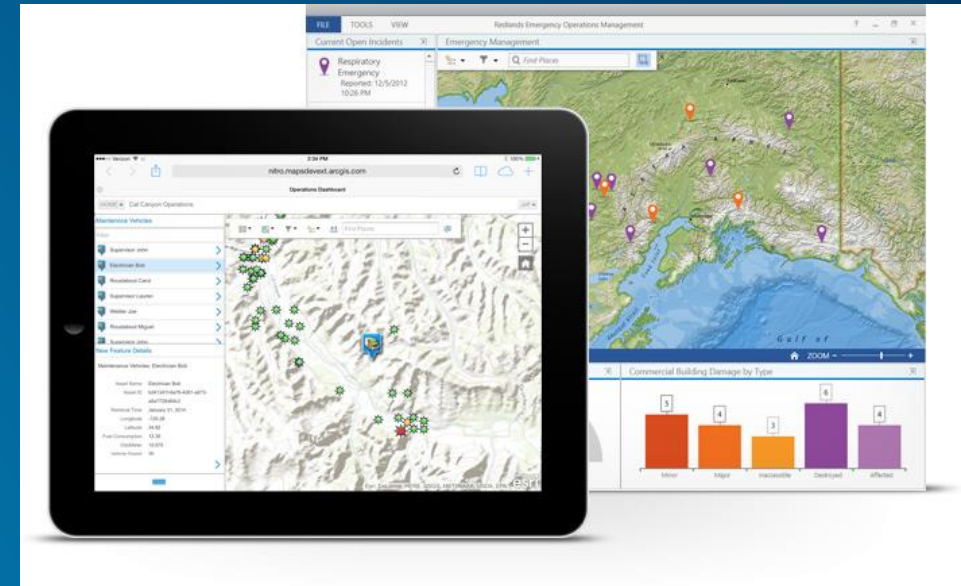
Related Tables...

Operations Dashboard for ArcGIS

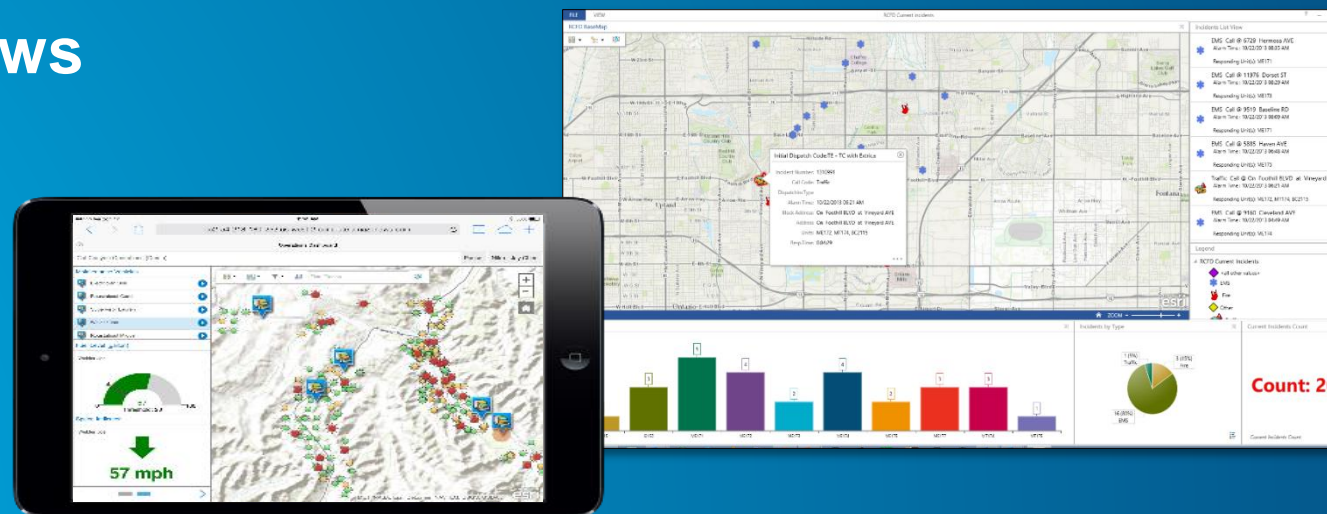


Operations Dashboard for ArcGIS

- Monitor daily operations
- Manage events
- Visualize key performance indicators
- Ready-to-use widgets
- Create and share common operating views

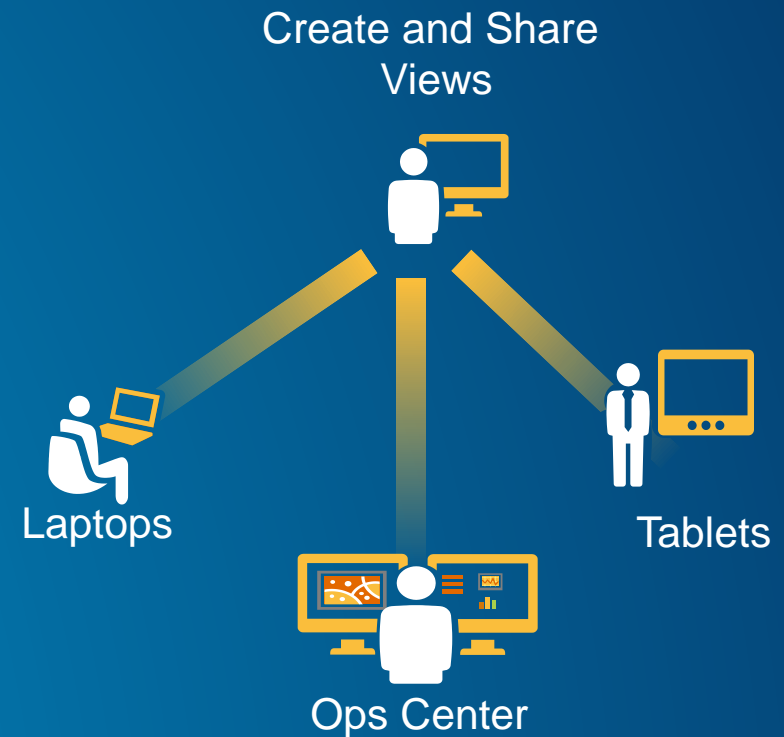


Windows desktop and browsers



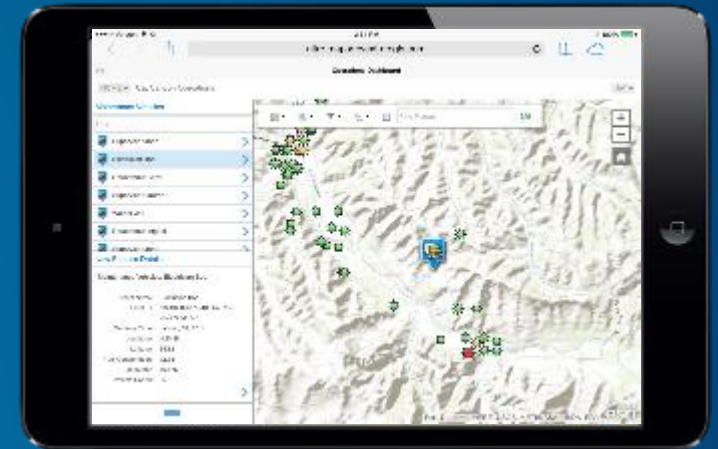
Operations Dashboard for ArcGIS

- **Ready to use widgets anyone can configure**
 - Maps, Lists
 - Bar Charts, Gauges
 - Histograms, Indicators
 - Details
- **Extensible using WPF SDK**



Operations Dashboard in a Browser!

- Author in Windows desktop application...open in a browser
- Single display operation view
- All widgets, feature actions and map tools supported



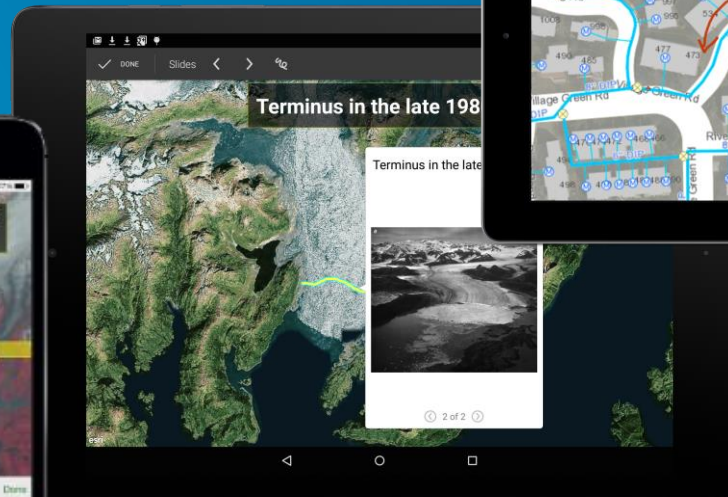
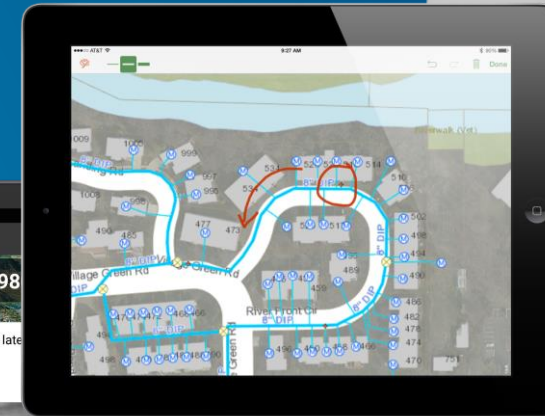
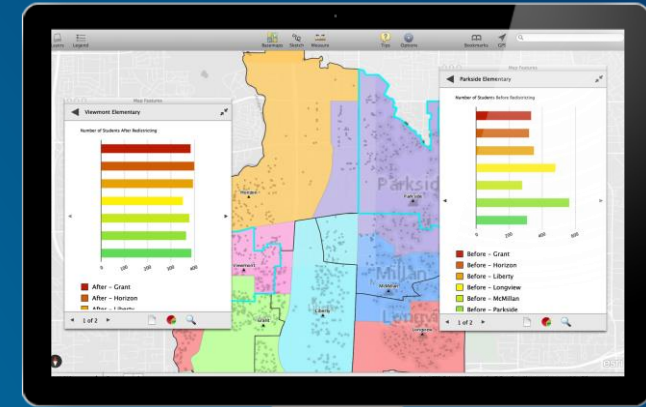
Demo

Explorer for ArcGIS

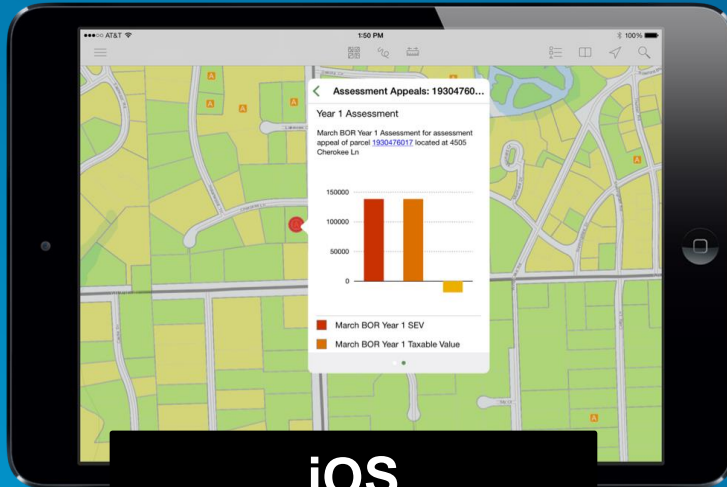


What is Explorer for ArcGIS?

- Personalizes your experience with ArcGIS
- Discover maps and data
- Collaborate and share
- Present maps and projects



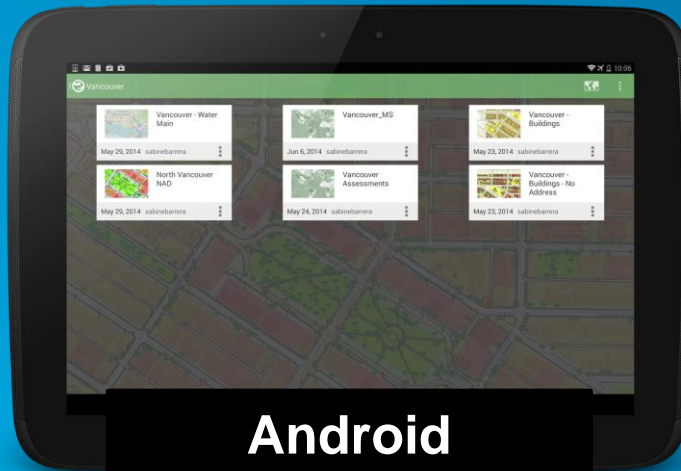
Multiple platforms



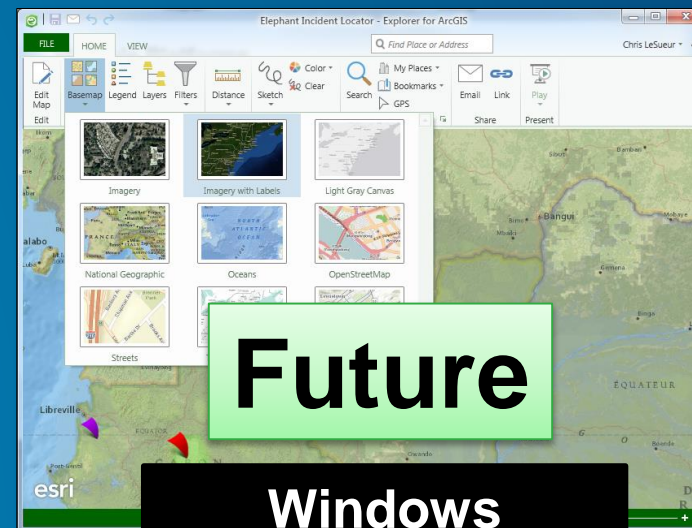
iOS
(iPhone and iPad)



Mac OS X



Android
(phones and tablets)



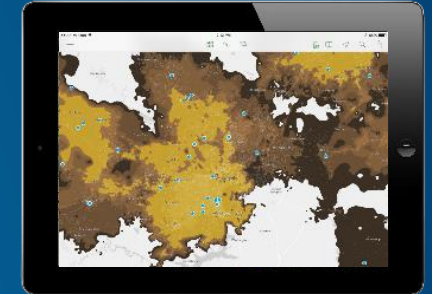
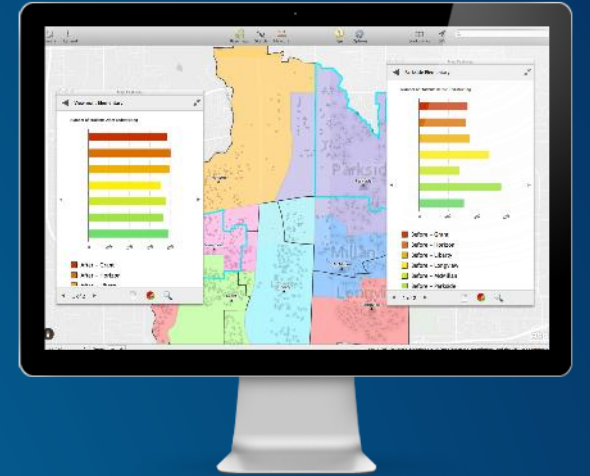
Future

Windows

Explorer for ArcGIS

- **What you can do:**

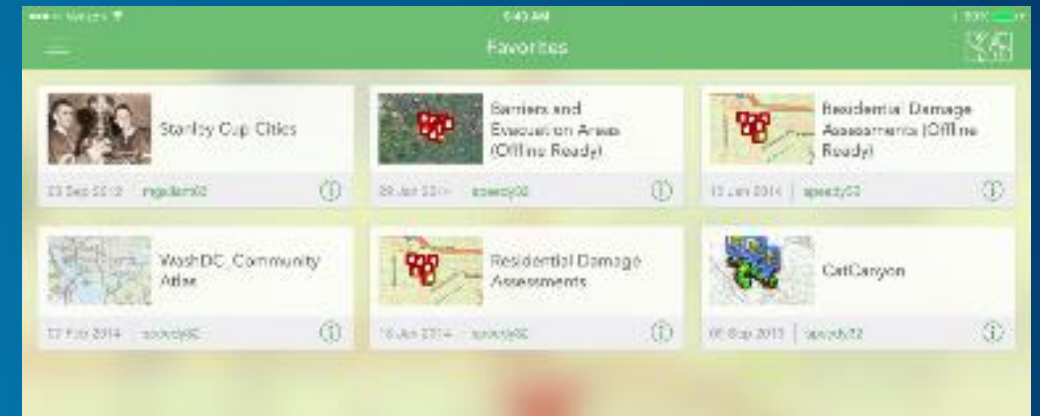
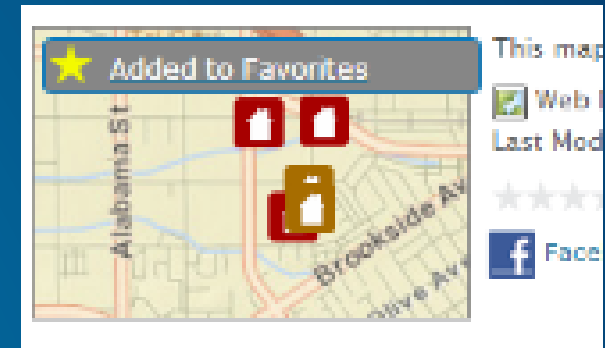
- Discover and Use Maps
- Search and Explore data
- Present, Share and Collaborate using Maps



Discover Maps

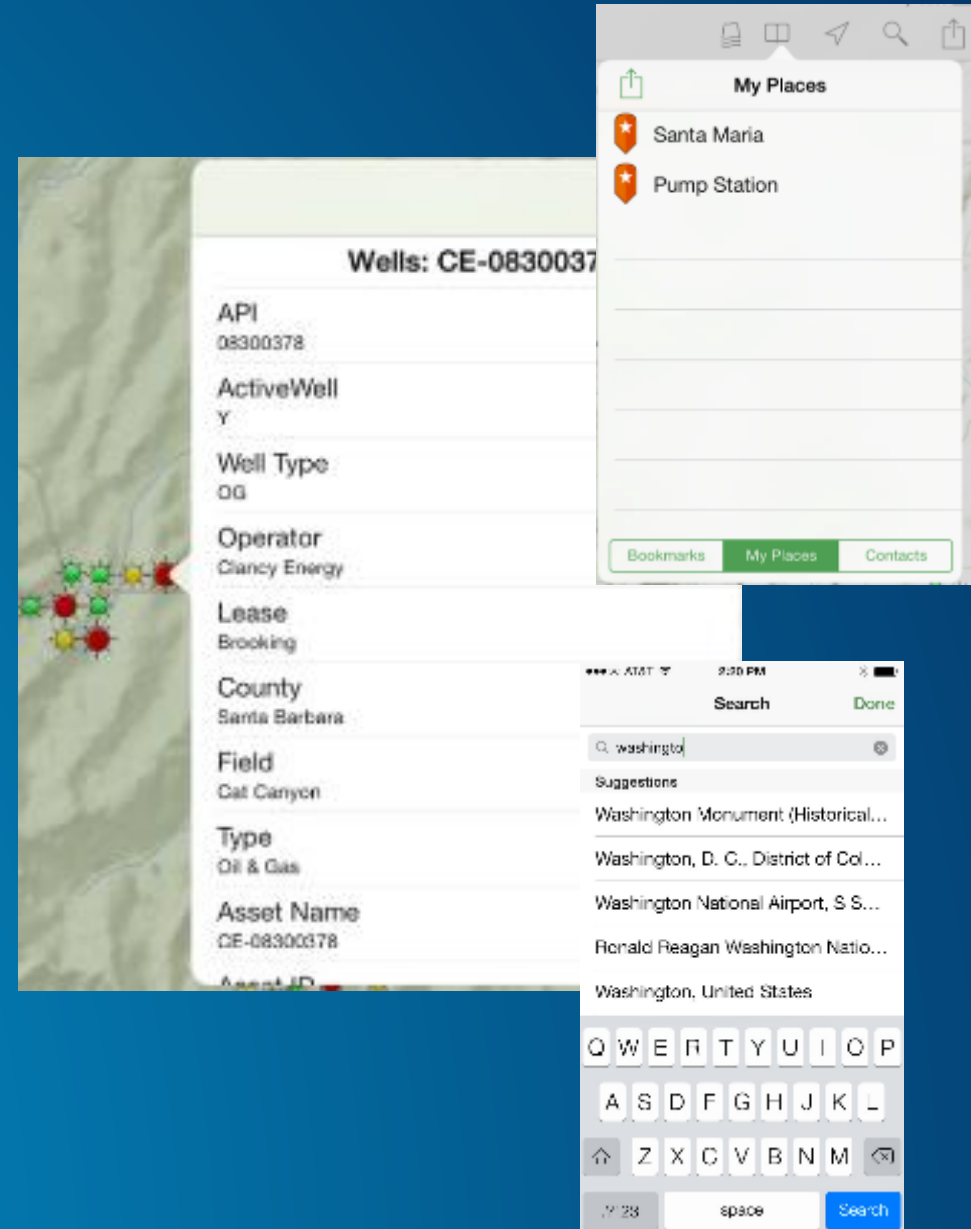
A Personalized Experience for Working with Maps

- **Use the maps you work with every day**
 - Favorites
 - My Maps
 - My Groups
 - Recently used
- **Search for Maps within your organization**
 - Featured and newest maps
- **Map Information**
 - View map details
 - Add maps to your favorites



Use and Search the Map

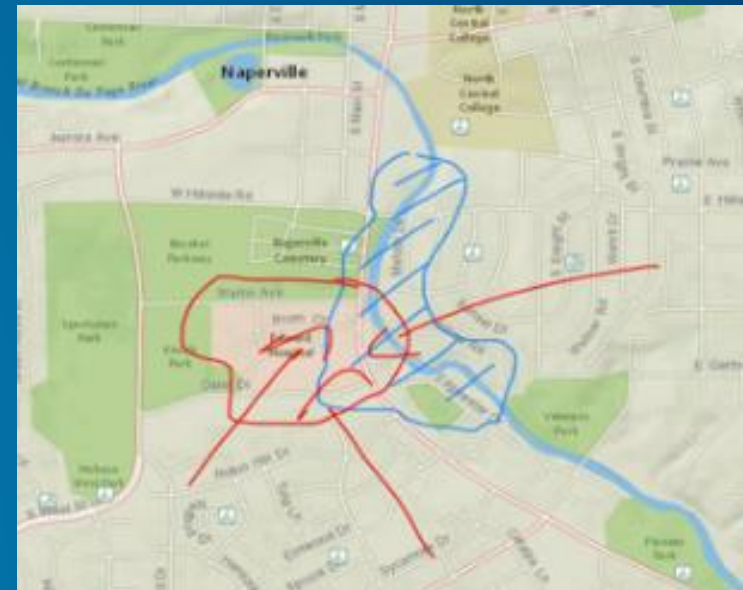
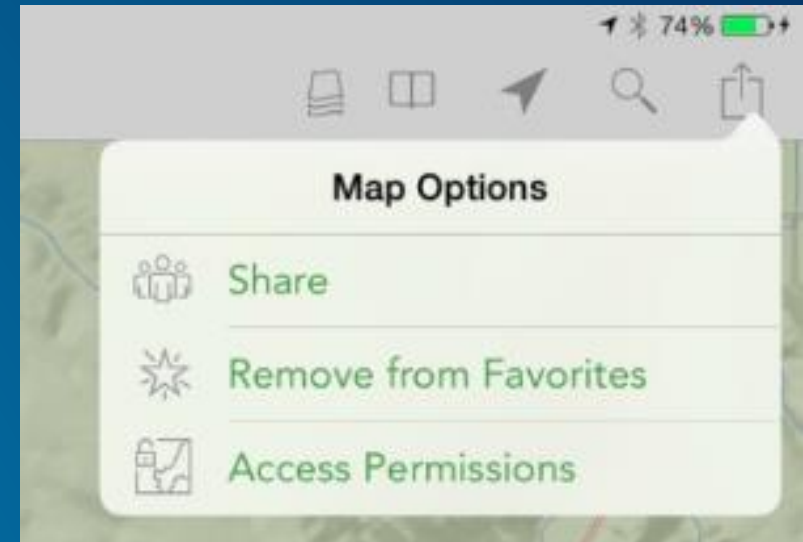
- **Key features for using maps**
 - Measure Distances and Areas
 - View Feature Details
 - Change basemaps
 - Bookmarks, My Places, Contacts
- **Search the map for**
 - Places
 - Features
 - Locations by coordinate notation
 - Search suggestions



Share and Collaborate

- **Share maps**
 - Within your organization (groups, everyone)
 - Directly with others (Email, Text Message, AirDrop)

- **Collaborate**
 - Sketch on the map
 - View presentations

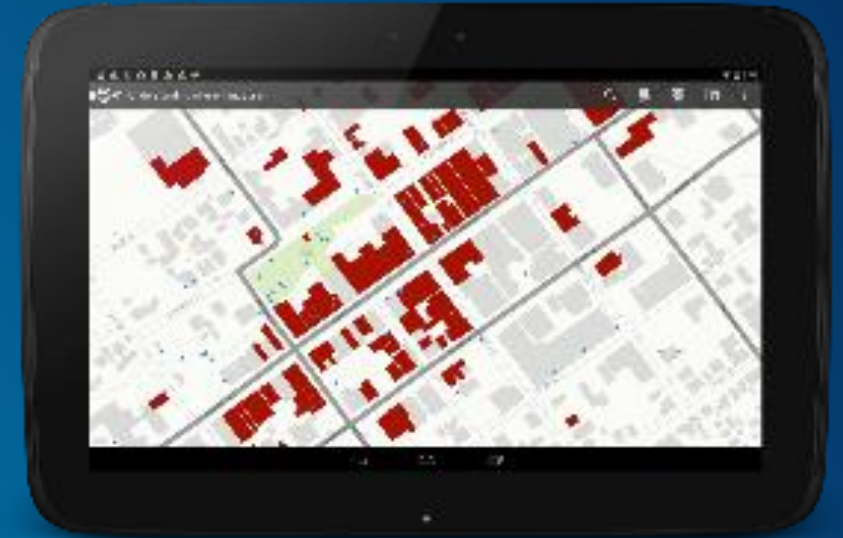


Demo

What's Coming Next with Explorer for ArcGIS

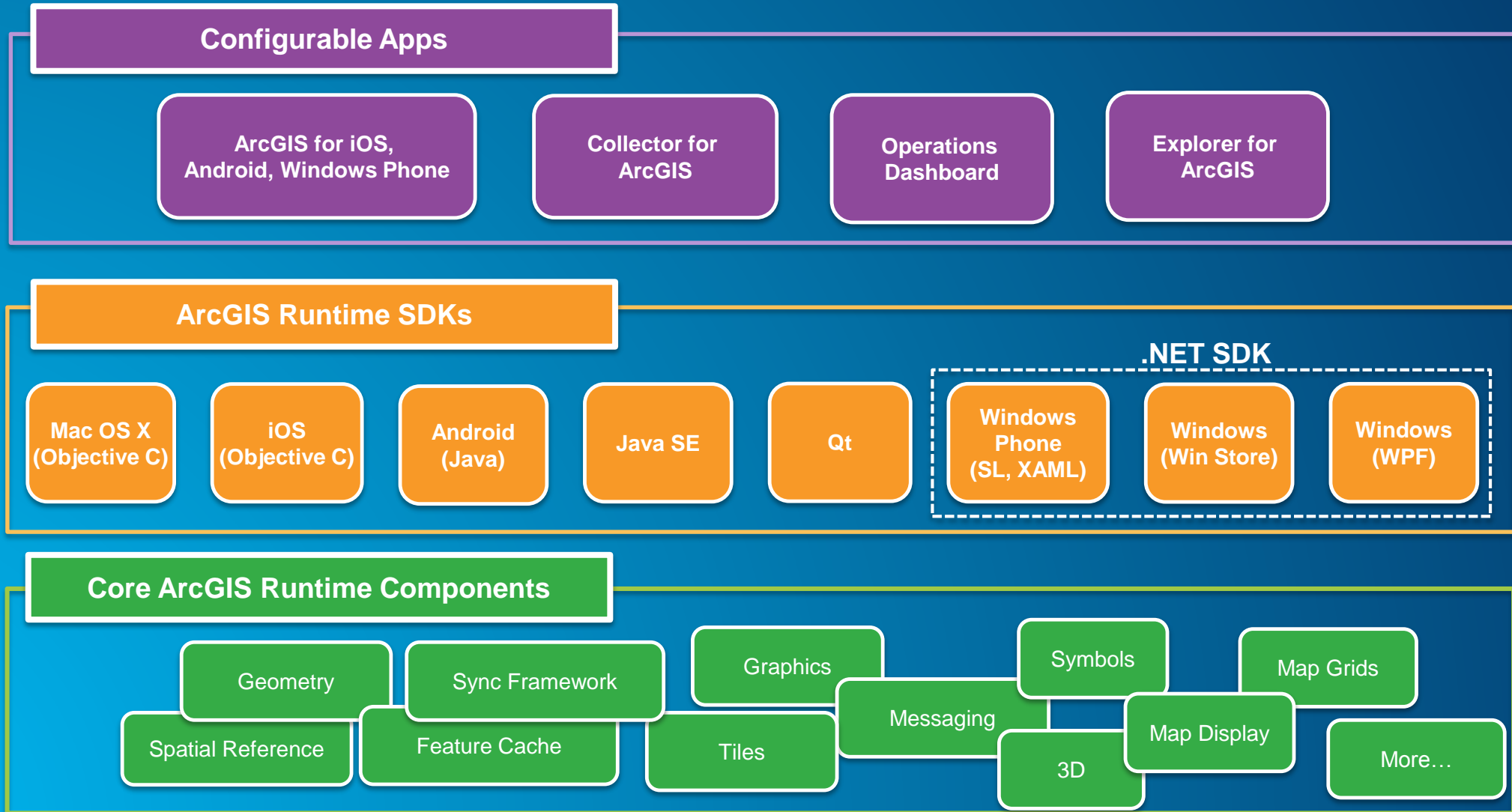
- **More Capabilities**

- Make maps and layers
- 3D – support for web scenes (viewing, presentations)
- Offline – Download, view and use the map offline
- Template-based feature editing – Simple point, line poly data editing



Runtime SDKs

Device Platform Strategy



Apps Sessions

- **Collector for ArcGIS: An Overview**
 - Tuesday, 10 Feb 2015, 1:30pm - 2:30pm
 - Location: 207 B
- **Operations Dashboard for ArcGIS: An Overview**
 - Tuesday, 10 Feb 2015, 11:00am - 12:00pm
 - Location: 207 B
- **Explorer for ArcGIS: An Overview**
 - Tuesday, 10 Feb 2015, 5:15pm - 6:15pm
 - Location: 103 A
- **ArcGIS Apps: The Road Ahead**
 - Tuesday, 10 Feb 2015, 2:45pm - 3:45pm
 - Location: 103 A



Understanding our world.