

**Federal GIS Conference**

February 9–10, 2015 | Washington, DC



# Leveraging the ArcGIS Platform to Support your Mission

Marcella Cavallaro

Lyle Wright

Ben Schaub

Michael Laitta - International Joint Commission of Canada and the U.S.



# Location

## Delivers Value

Accountability and Management

Government Transparency

Business

Science & Technology

Climate Change

Education

Transportation

Defense & Security

Infrastructure

Water Resources

Oceans

Urbanization & Development

Nature Conservation

Utilities

Human Health

Energy

Environment

Agriculture

Smart Growth

Government

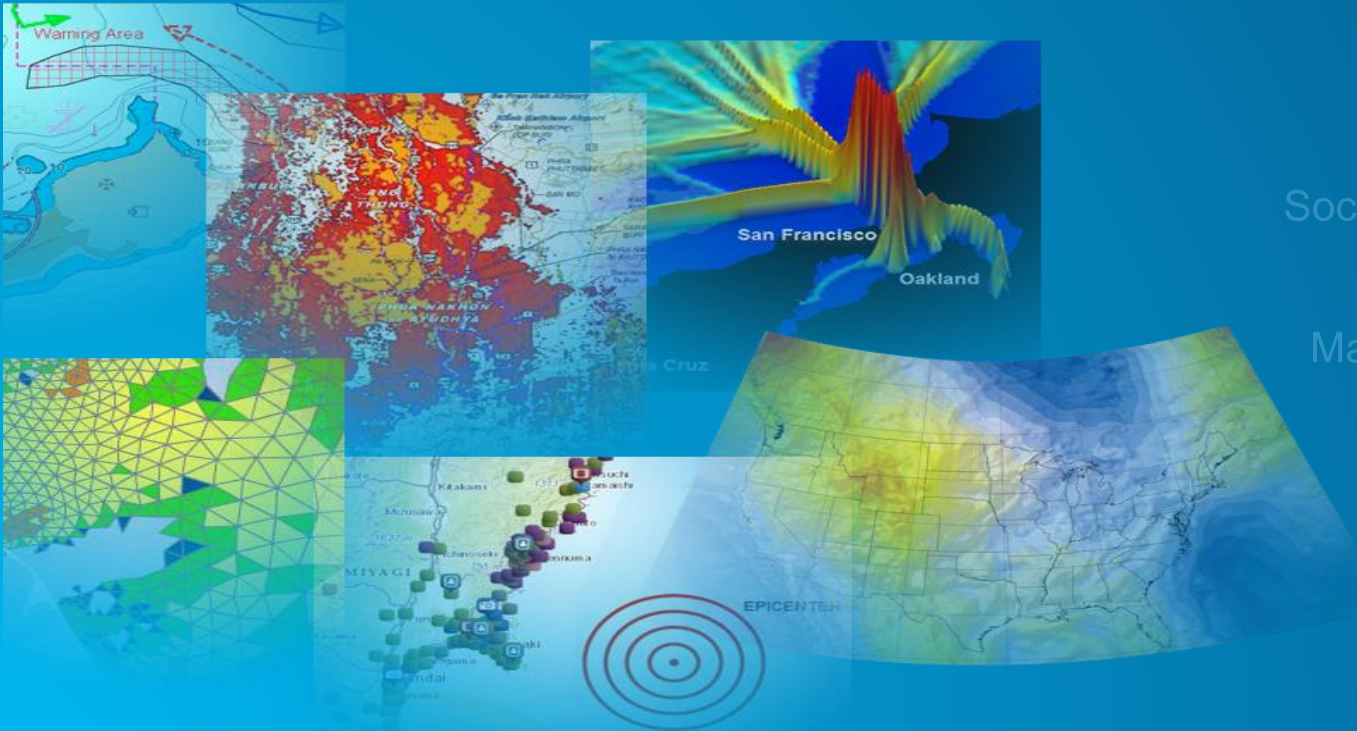
Social Conflicts

Natural Disasters

Economic Recovery

Mapping

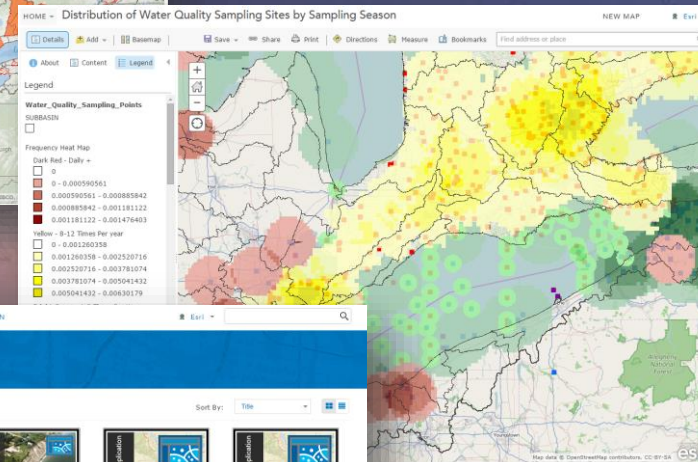
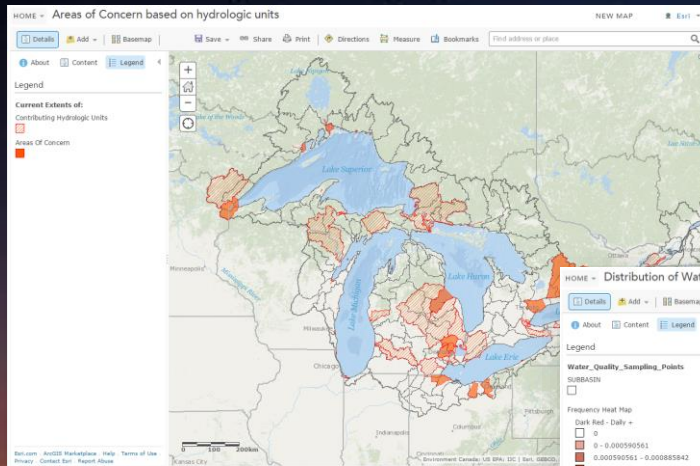
Research



*Across Many Organizations, Missions, and Projects*



Is that **authoritative knowledge**  
reaching the entire workforce?



Gallery

My Favorites My Organization's Featured Content Earl Featured Content

International Joint Commission Featured Content

Show: All Maps Layers Scenes Apps Tools Files

Search the website or visit the ArcGIS Marketplace


The *International Joint Commission* is an independent Binational organization established by the U.S. and Canada under the Boundary Waters Treaty of 1909

Our purpose is to prevent and resolve disputes about the use and quality of boundary waters and to advise Canada and the U.S. on issues surrounding water resources

- 13 State systems
- 7 Provincial
- 1 Territorial
- 2 Federal Governments

4,631 miles of land 2,199 miles of water

Credit: John Ryan

# International Joint Commission

More than a century of cooperation protecting shared waters

## ArcGIS REST Services Directory

[Home](#) > [services](#)

[JSON](#) | [SOAP](#)

**Folder: /**

**Current Version: 10.11**

**View Footprints In:** [ArcGIS.com Map](#)

**Folders:**

- [505NY](#)
- [ArcGisOrg](#)
- [BASINS](#)
- [Champlain](#)
- [GLRO](#)
- [IJC](#)
- [ISLBOC](#)
- [MapTour](#)
- [p3](#)
- [REDp3](#)
- [Sparrow](#)
- [Utilities](#)
- [WWTP](#)

**Services:**

*None*

**Supported Interfaces:** [REST](#) [SOAP](#)

DRAINAGEAREAS\_11\_2014.mxd - ArcMap

File Edit View Bookmarks Insert Selection Geoprocessing Customize Windows Help

1:84,887,568

Table Of Contents

- Layers
  - C:\IJC\_DATA\GDBML\River\_Basin\_WGS84\_Mercato
    - basin
      - BASINS
      - SUBBASIN

Catalog

Location: Home - IJC\_DATA\MXDS

- Home - IJC\_DATA\MXDS
  - Folder Connections
    - C:\IJC\_DATA
      - BETA\_MXD
      - champlain
      - firstnations
      - Gauges\_05\_23\_2013
      - GDBML
      - glance
      - GLRO
      - transerv

Name	Type
IJC Maps	Folder
ALASKA_YUKON.mxd	Map Document
BASINS_8_4_11_2012.mxd	Map Document
BasinsForAGISFO.mxd	Map Document
BetaGauges05_2013.mxd	Map Document
CHAMPLAIN.mxd	Map Document
COLUMBIA.mxd	Map Document
CROD.mxd	Map Document
Dereeth.mxd	Map Document
DRAINAGEAREAS_01_2013.mxd	Map Document
DRAINAGEAREAS_11_2014.mxd	Map Document
FRASER.mxd	Map Document
Gauge_tool.mxd	Map Document
glJlc_12_13.mxd	Map Document
glJlc_12_13 (v2).mxd	Map Document
GREATLAKESWL.mxd	Map Document
HYDAT_11_2012.mxd	Map Document
IJC_DISCHARGE_11_2012.mxd	Map Document
ISLBOC.mxd	Map Document
LEEP.mxd	Map Document
LOSLR.mxd	Map Document

-18602202.28 3425073.762 Meters

ArcCatalog - C:\IJC\_DATA\GLRO\IJC\_100\IJC\_Points.gdb\IJC\_Points

File Edit View Go Geoprocessing Customize Windows Help

C:\IJC\_DATA\GLRO\IJC\_100\IJC\_Points.gdb\IJC\_Points

Contents Preview Description

OBJECTID	PROGRAM_NAME	LOCATION	ECOSYSTEM	BAS
1	Regular USGS Stream Gages	MI,PA and NY	tributaries	TRIBUTARIES
2	National coastal assessment program	USEPA partnership with states agencies	nearshore-offshore	NEARSHORE-OFF
3	National coastal assessment program	USEPA partnership with states agencies	nearshore-offshore	NEARSHORE-OFF
4	National coastal assessment program	USEPA partnership with states agencies	nearshore-offshore	NEARSHORE-OFF
5	National coastal assessment program	USEPA partnership with states agencies	nearshore-offshore	NEARSHORE-OFF
6	National coastal assessment program	USEPA partnership with states agencies	nearshore-offshore	NEARSHORE-OFF
7	National coastal assessment program	USEPA partnership with states agencies	nearshore-offshore	NEARSHORE-OFF
8	National coastal assessment program	USEPA partnership with states agencies	nearshore-offshore	NEARSHORE-OFF
9	National coastal assessment program	USEPA partnership with states agencies	nearshore-offshore	NEARSHORE-OFF
10	National coastal assessment program	USEPA partnership with states agencies	nearshore-offshore	NEARSHORE-OFF
11	National coastal assessment program	USEPA partnership with states agencies	nearshore-offshore	NEARSHORE-OFF
12	National coastal assessment program	USEPA partnership with states agencies	nearshore-offshore	NEARSHORE-OFF
13	National coastal assessment program	USEPA partnership with states agencies	nearshore-offshore	NEARSHORE-OFF
14	National coastal assessment program	USEPA partnership with states agencies	nearshore-offshore	NEARSHORE-OFF
15	National coastal assessment program	USEPA partnership with states agencies	nearshore-offshore	NEARSHORE-OFF
16	National coastal assessment program	USEPA partnership with states agencies	nearshore-offshore	NEARSHORE-OFF
17	National coastal assessment program	USEPA partnership with states agencies	nearshore-offshore	NEARSHORE-OFF
18	National coastal assessment program	USEPA partnership with states agencies	nearshore-offshore	NEARSHORE-OFF
19	National coastal assessment program	USEPA partnership with states agencies	nearshore-offshore	NEARSHORE-OFF
20	National coastal assessment program	USEPA partnership with states agencies	nearshore-offshore	NEARSHORE-OFF
21	National coastal assessment program	USEPA partnership with states agencies	nearshore-offshore	NEARSHORE-OFF
22	National coastal assessment program	USEPA partnership with states agencies	nearshore-offshore	NEARSHORE-OFF
23	National coastal assessment program	USEPA partnership with states agencies	nearshore-offshore	NEARSHORE-OFF
24	National coastal assessment program	USEPA partnership with states agencies	nearshore-offshore	NEARSHORE-OFF
25	National coastal assessment program	USEPA partnership with states agencies	nearshore-offshore	NEARSHORE-OFF
26	National coastal assessment program	USEPA partnership with states agencies	nearshore-offshore	NEARSHORE-OFF
27	National coastal assessment program	USEPA partnership with states agencies	nearshore-offshore	NEARSHORE-OFF
28	National coastal assessment program	USEPA partnership with states agencies	nearshore-offshore	NEARSHORE-OFF

1 (of 1065)

Preview: Table

File Geodatabase Feature Class selected



# International Joint Commission

More than a century of cooperation protecting shared waters



Comparing Land to Water Delivery - Phosphorus vs.



Missisquoi Bay Phosphorus Critical Source Areas (VT)



Map Tour of the International Joint Commission of Canada



IJC in the Great Lakes Basin

## Welcome to IJC Maps

Welcome to the International Joint Commissions' Mapping Portal. Start by browsing the geography of the IJC and featured map services above. Or learn how to create your own maps and dig into the data deeper by selecting a topic below.

Bienvenue sur le portail de cartographie des commissions mixtes internationales. Commencez par parcourir la géographie de la CMI et présenté services de la carte ci-dessus. Ou apprendre à créer vos propres cartes et de creuser dans les données les plus profondes en sélectionnant un thème ci-dessous.



IJC in the Great Lakes Basin



International St. Lawrence River Board of Control

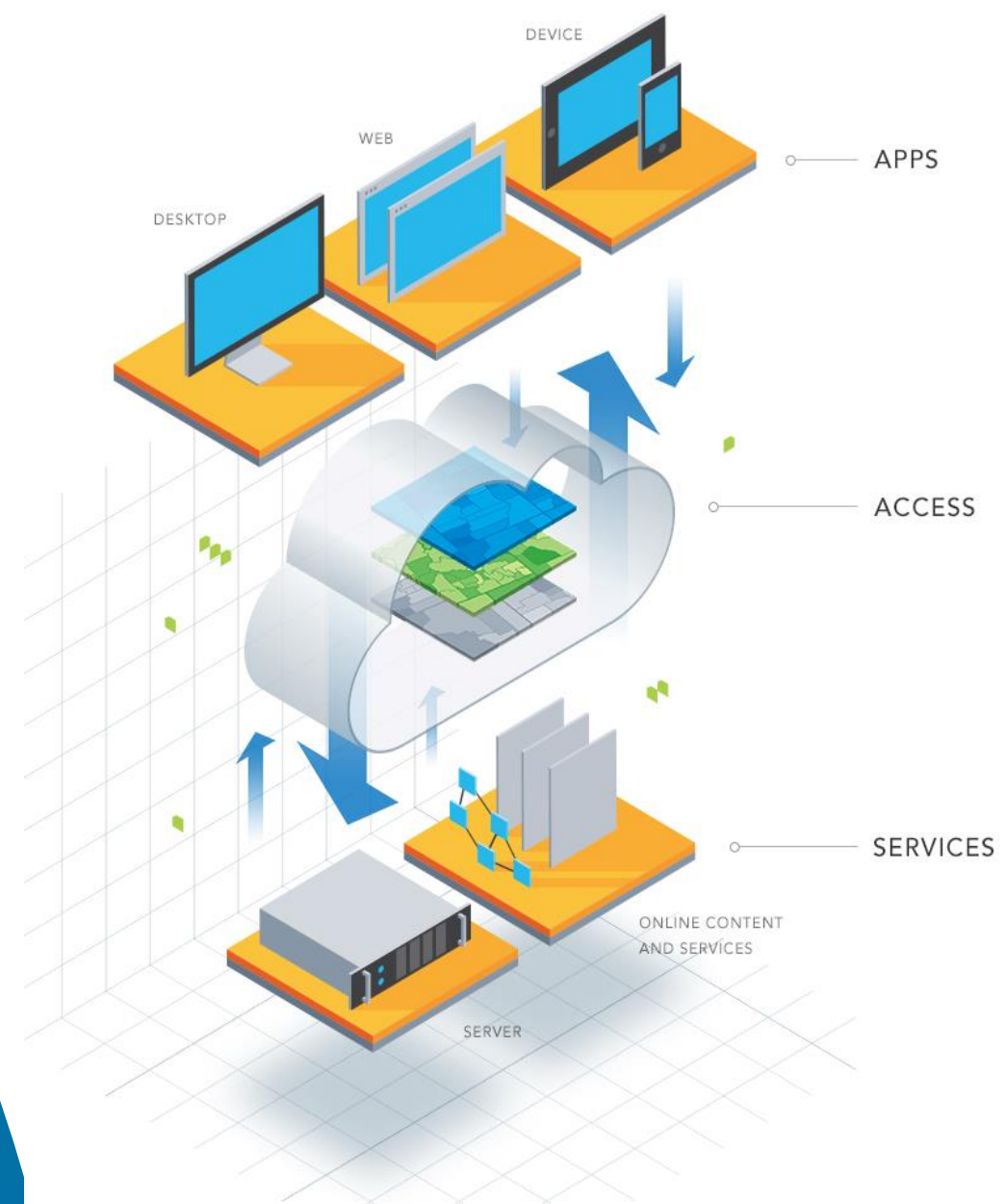


International Niagara Board of Control

# ArcGIS

An Integrated  
Web GIS Platform

Providing mapping, analysis, data  
management, and collaboration





**Use the Device at Hand**

Browser, Phone, Tablet



# GIS is a “System of Record”

- ▶ Organizing and managing the geographic context of your assets and resources



# ArcGIS is a Platform

► Making mapping and location aware apps available across your organization



# Collaboration ▶ Enable people to work together by securely sharing data, apps, and knowledge



**Naveen**  
Executive

ACCESS ●●●●○  
SECURITIES ●●●●○  
CAPABILITIES ●●●●●



**Meghan**  
IT

ACCESS ●●●●○  
SECURITIES ●●●●○  
CAPABILITIES ●●●●○



**Manny**  
Accounting

ACCESS ●●●●○  
SECURITIES ●●●●●  
CAPABILITIES ●●●●○



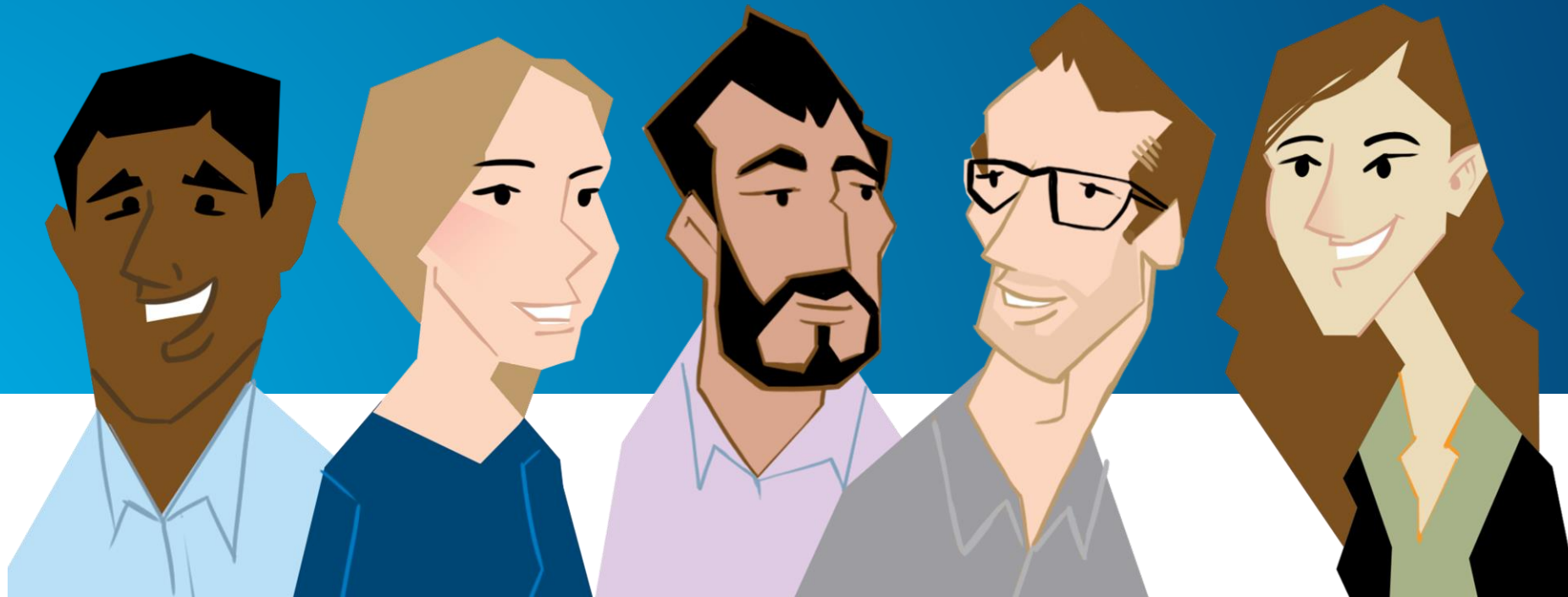
**David**  
Field  
Ops

ACCESS ●●●●●  
SECURITIES ●●●●○  
CAPABILITIES ●●●●○



**Kristin**  
Human  
Resources

ACCESS ●●●●○  
SECURITIES ●●●●○  
CAPABILITIES ●●●●○



**Federal GIS Conference**

February 9–10, 2015 | Washington, DC



**Don't forget to complete  
a session evaluation form!**

**Federal GIS Conference**

February 9–10, 2015 | Washington, DC



# **Print your customized Certificate of Attendance!**

Printing stations located on L St. Bridge, next to registration

## Federal GIS Conference

February 9–10, 2015 | Washington, DC



# GIS Solutions EXPO, Hall D

Monday, 12:30pm – 6:30pm

Tuesday, 10:45 AM–4:00 PM

- Exhibitors
- Hands-On Learning Lab
- Technical & Extended Support
- Demo Theater
- Esri Showcase

**Federal GIS Conference**

February 9–10, 2015 | Washington, DC



## **Networking Reception:**

# ***National Museum of American History***

Tuesday, 6:30 PM–9:30 PM  
Bus Pickup located on L Street

**Federal GIS Conference**

February 9–10, 2015 | Washington, DC



## **Interested in diving deeper into Esri technology?**

Add a day to your Fed GIS experience and register to attend the Esri DevSummit Washington DC. Stop by the registration counter to sign up.





Understanding our world.