

**Federal GIS Conference**

February 9–10, 2015 | Washington, DC



# **Federal Real Property Management: Laying the Data Foundation with GIS**

Mike Bowers, GSA

Michael Hartung, GSA

Stu Rich, PenBay Solutions

Ben Yetman, PenBay Solutions

John Young, Esri

**Federal GIS Conference**

February 9–10, 2015 | Washington, DC



**Don't forget to complete  
a session evaluation form!**

**Federal GIS Conference**

February 9–10, 2015 | Washington, DC



# **Print your customized Certificate of Attendance!**

Printing stations located on L St. Bridge, next to registration

**Federal GIS Conference**

February 9–10, 2015 | Washington, DC



## **Networking Reception:**

# ***National Museum of American History***

Tuesday, 6:30 PM–9:30 PM  
Bus Pickup located on L Street

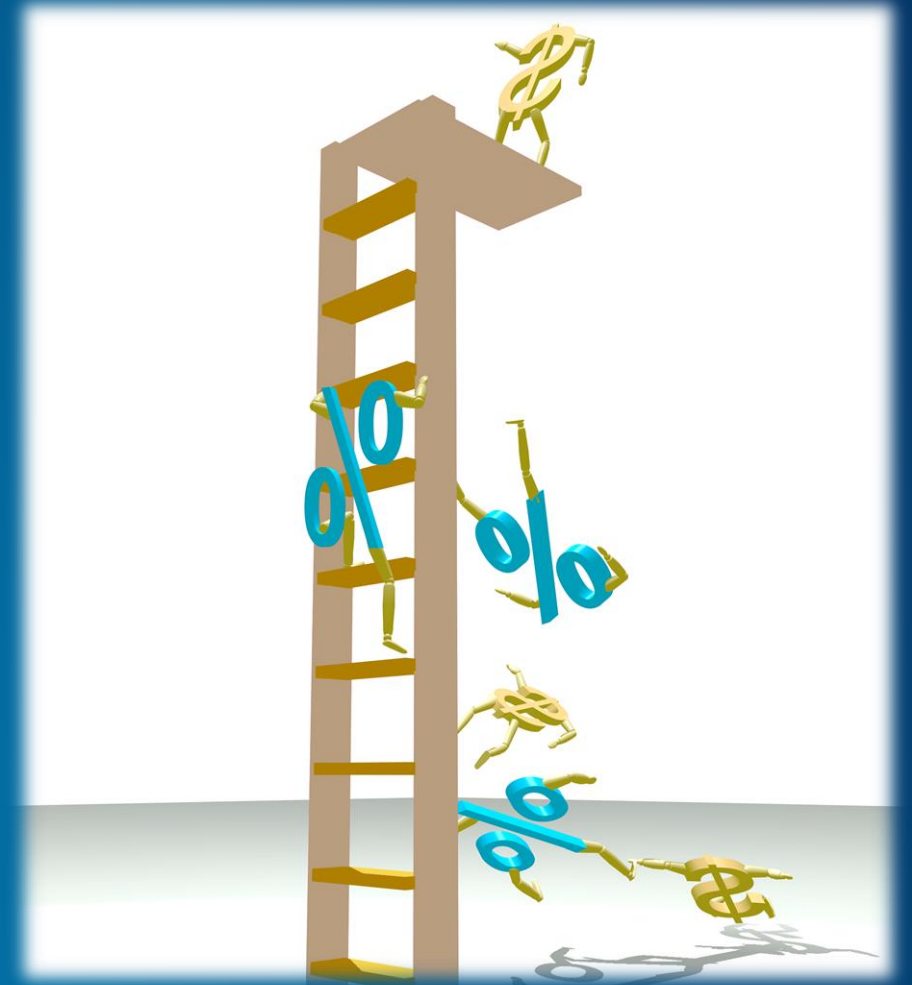
# Laying the Data Foundation - Agenda

- Introduction – Laying the Data Foundation
- Government Examples
- Live Demonstrations
- QnA with Panel and Attendees
- More Information



# Challenges Faced by Federal Real Property Managers

- Underutilized properties cost billions annually
- Executive orders, GAO, etc., demand new efficiencies
- Increasing vulnerability of federal real property
- **Information silos and other obstacles to efficient management & protection of FRP**

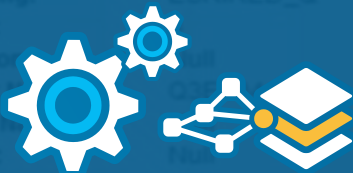


# Laying the Data Foundation – GIS is a Force Multiplier

Real Property & Facilities Content



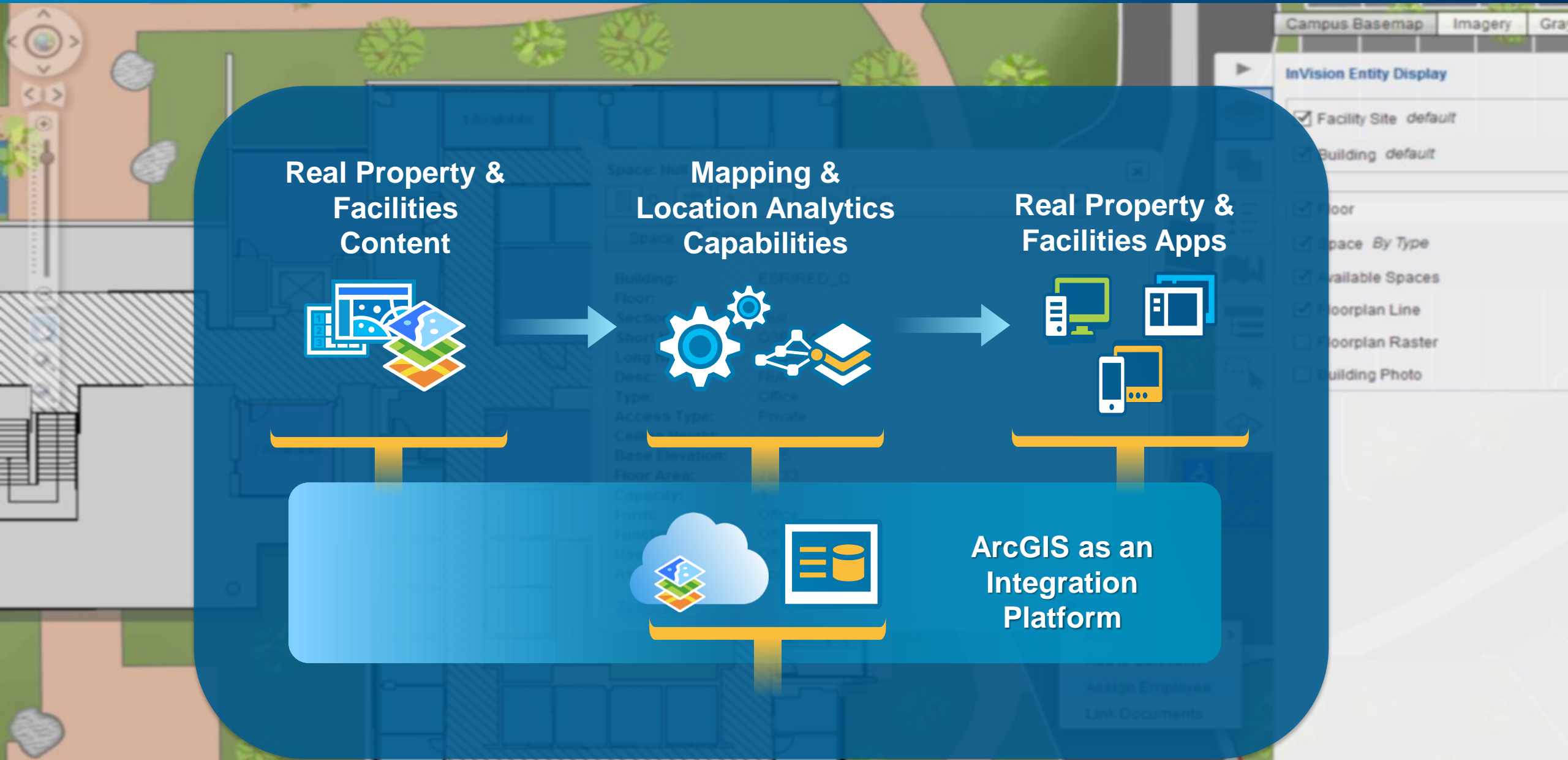
Mapping & Location Analytics Capabilities



Real Property & Facilities Apps

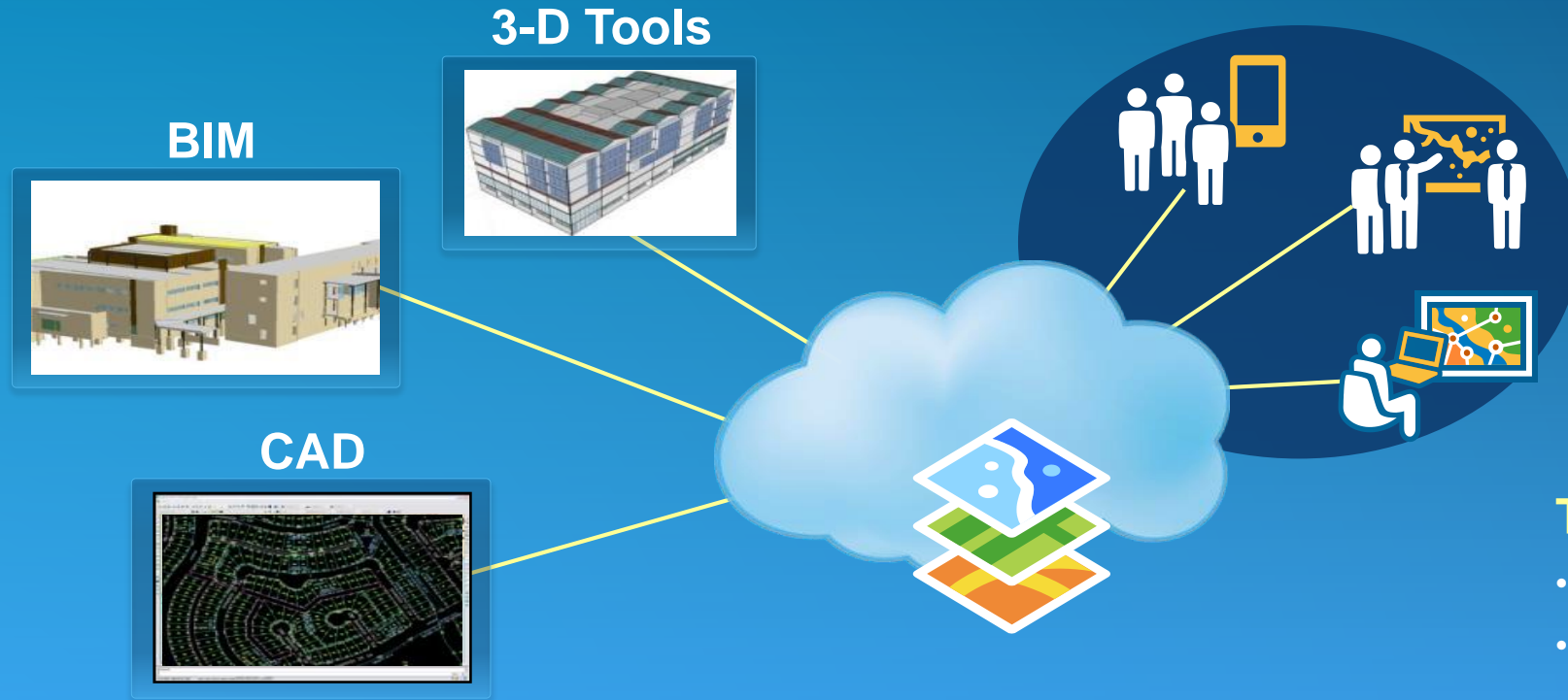


ArcGIS as an Integration Platform



# Facilities GIS Utilizes Building Information

Integrating Building Data with Other Geographic Information



## Interoperability

- Web Server
- Extract, Translate, Load
- CAD/BIM Standards
- Interchange Formats

## Specifications

- BOMA/FICM
- OmniClass
- COBie
- OSCRE

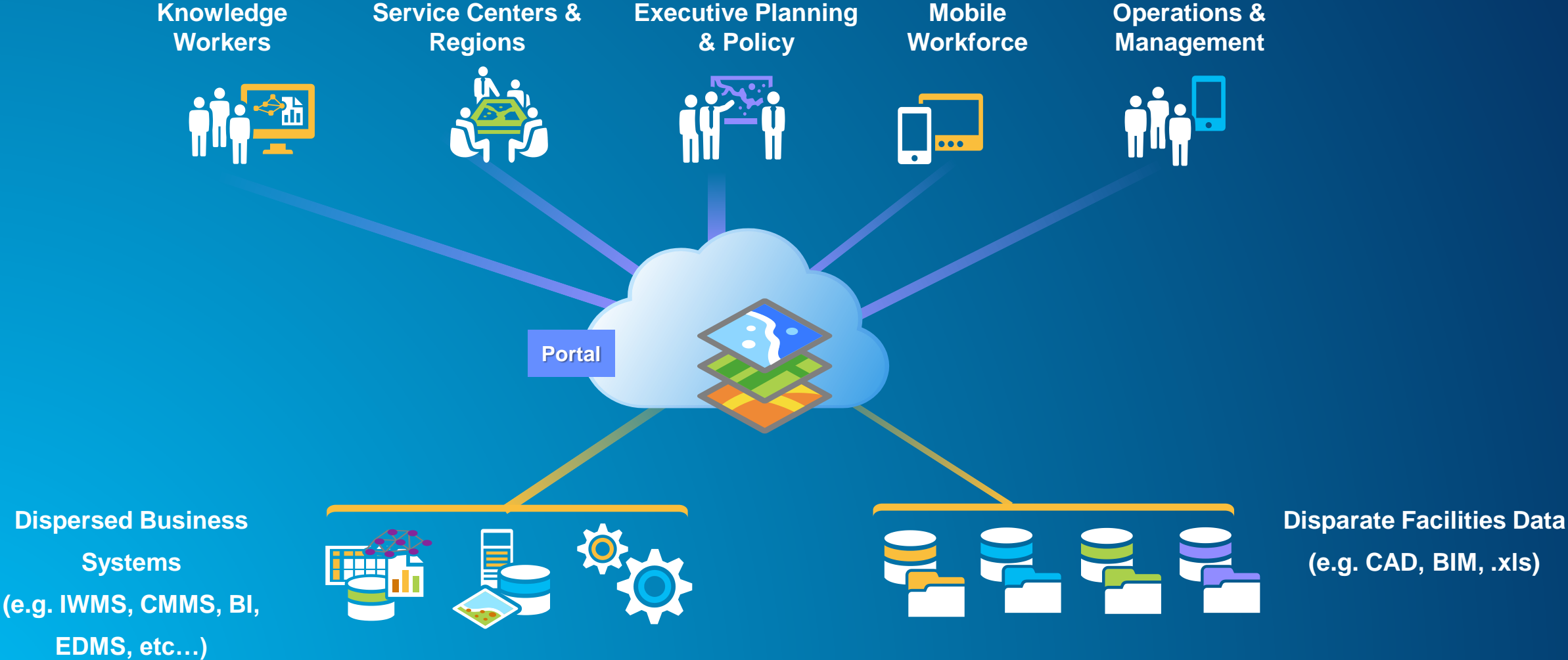
## Tools

- 2D & 3D Data Models
- Historical Playback
- Editing
- Visualization
- Design & Analysis



# Facilities GIS provides a Unifying Integration Platform

A Mapping & Location Analytics Platform for Managing Facilities




*... helps you, your staff & contractors discover, make, use & share facility maps from any device, anywhere, anytime*

# GSA's GIS Center of Excellence

Mike Bowers & Michael Hartung

# GSA's Mapping Portal using ArcGIS Online

The screenshot displays the GSA Mapping Portal interface. At the top left, the GSA logo is followed by the text "General Services Administration Mapping Portal". A navigation menu includes links for "HOME", "GALLERY", "MAP", "SCENE", and "GROUPS". Below the menu is a "Sign In" section with the following text and options:

Sign in to General Services Administration 

USING YOUR GENERAL SERVICES ADMINISTRATION ACCOUNT

or

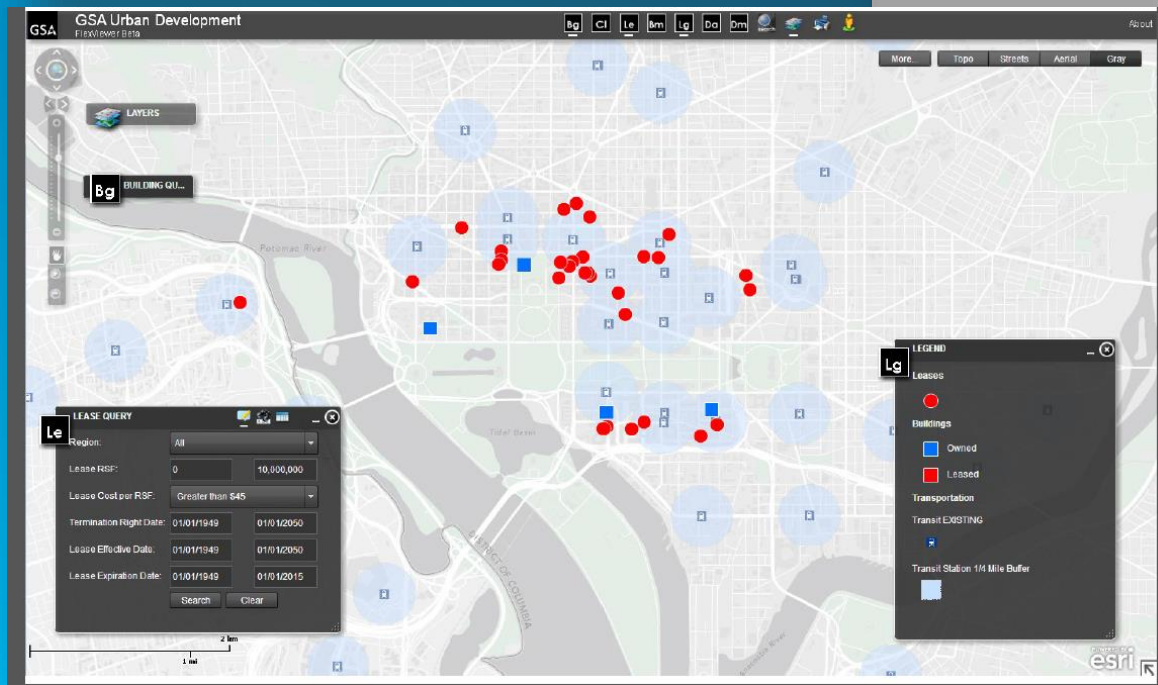
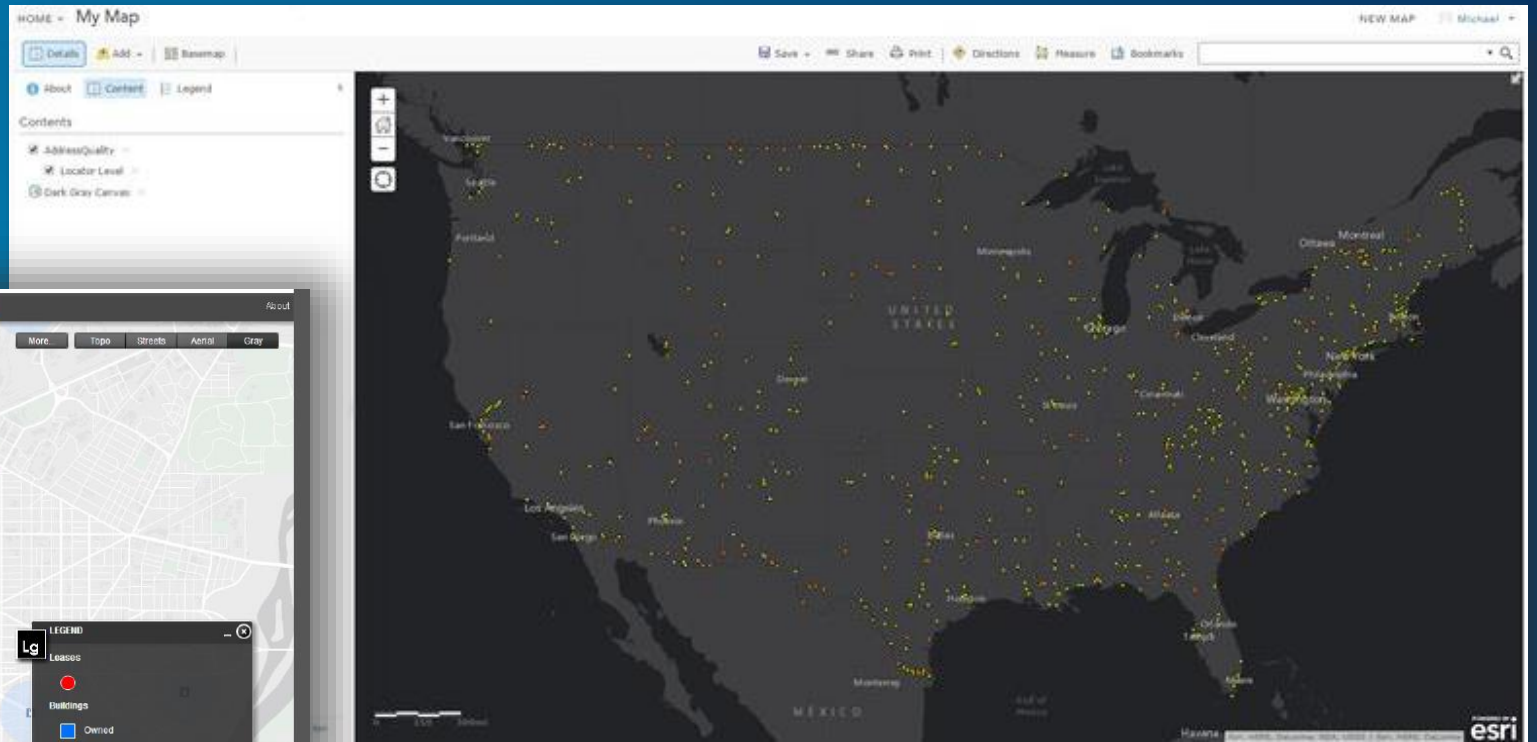
USING YOUR ARCGIS ACCOUNT

The main content area features a gallery of three map thumbnails:

- Tropical Storm Ernesto 8/6/2012**: A map showing a tropical storm path over the Atlantic Ocean.
- GSA Owned and Leased Buildings by Proportional**: A map of the United States with red dots representing building locations.
- GSA PBS FRPP 2011 Map Gallery**: A gallery of several smaller map thumbnails.

A welcome message at the bottom reads: "Welcome to ArcGIS Online for GSA, a mapping portal that makes it easy to create, analyze and share maps. You can create interactive maps and share them with the rest of the agency. Click the 'Map' link above to create your own maps!"

# GSA Maps & Apps for Real Property Validation & Query



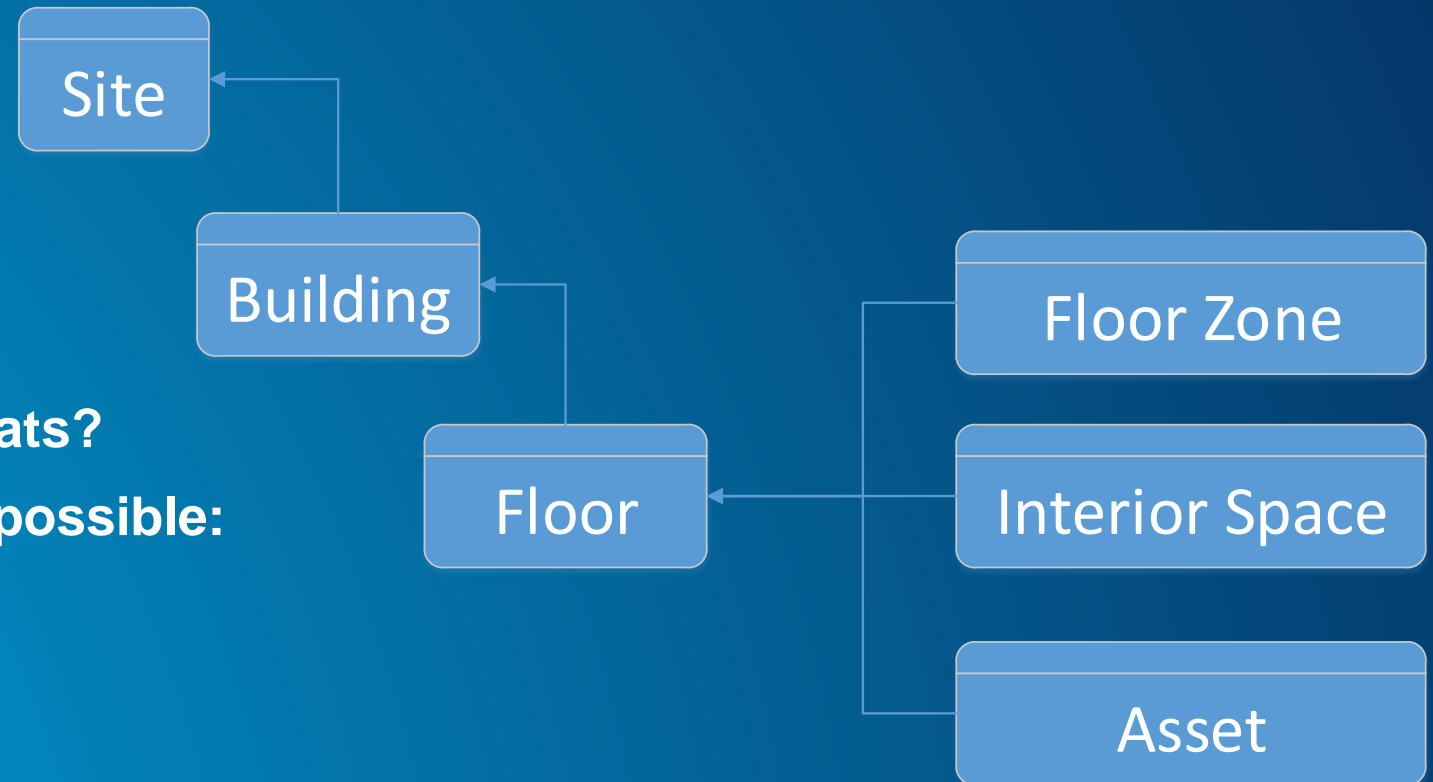
... see more examples in just released edition of Esri's "Mapping the Nation"

# An Integration Platform

Ben Yetman

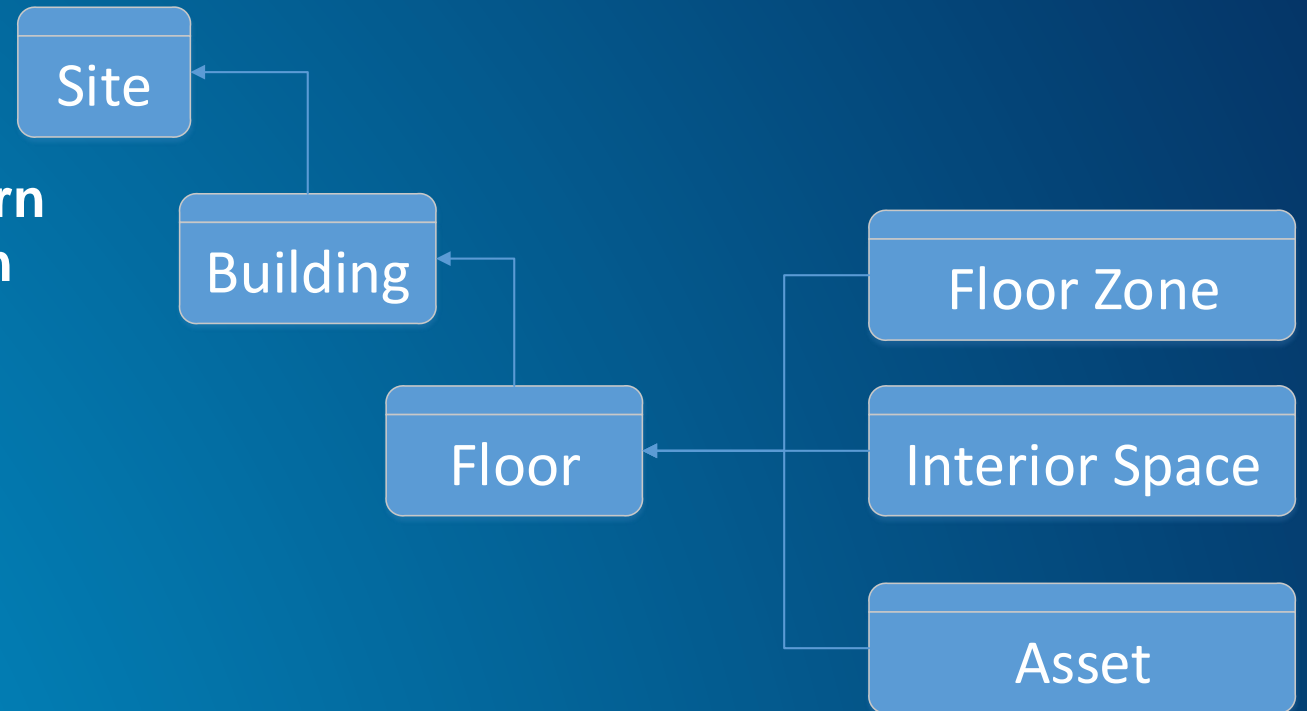
# Data Interoperability Requires Standards

- What are the core concepts?
- How are they organized?
- What are required attributes?
- What are acceptable values?
- What are the transmission formats?
- Use an existing standard when possible:
  - National CAD Standard
  - National BIM Standard
  - COBie
  - FISDM



# FISDM Purpose

- **Develop a practical, replicable pattern for managing building and floor plan data in GIS**
- **Help project teams get started**
- **Support multiple applications/solutions**
- **FISDM is not a solution**
- **Collaborate and share between groups working on different application problems**



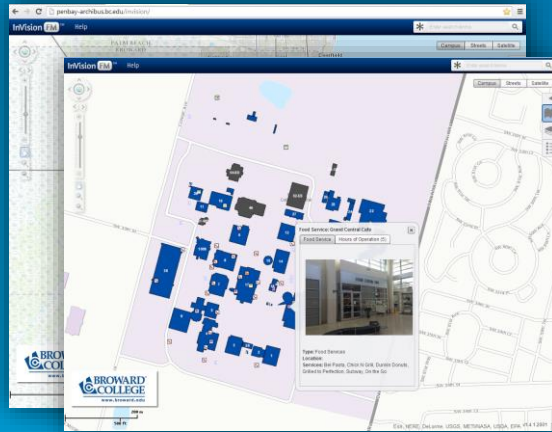
## What is available from FISDM?

- **Data Model (XML Workspace)**
- **Sample Data**
- **Sample Interoperability Tools**
- **Sample Development Tools**
- **Data Driven Pages example**
- **CAD organization recommendations**
- **Documentation**
- **Links to other resources**
- **Wiki**
- **Issue log**

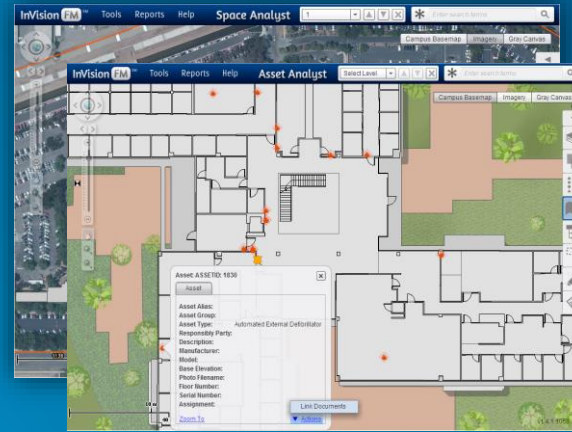


# How to get started

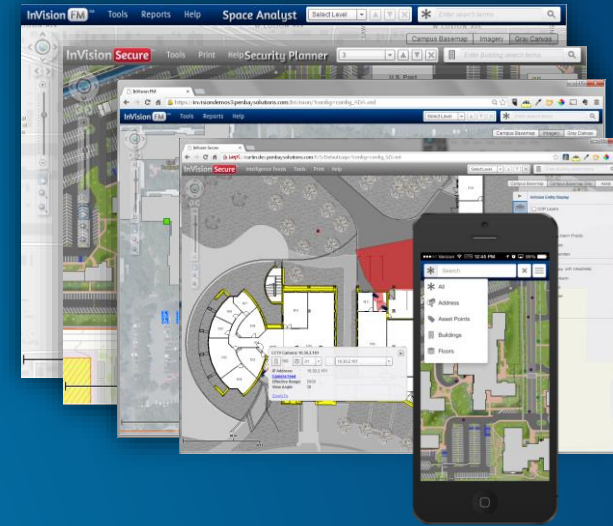
## Crawl



## Walk



## Run



- [www.fisd.com](http://www.fisd.com)
- [www.esri.com/fm](http://www.esri.com/fm)
- [www.vertex3.com](http://www.vertex3.com)
- [www.safe.com](http://www.safe.com)
- [www.penbaysolutions.com](http://www.penbaysolutions.com)

# QnA with Our Panel & Attendees

# Facilities Are Mission Critical – More Information

[penbaysolutions.com/govloop-mission-critical/](http://penbaysolutions.com/govloop-mission-critical/)



penbaysolutions  
gis for facility management

PRODUCTS ✕ INDUSTRIES ✕ SOLVE MY PROBLEM VIDEOS LEARN MORE ✕ ABOUT ✕ Q

Events

## Esri Federal GIS Conference

Main Agenda Exhibits Registration Get Involved About

# Building a Resilient Nation

[Register Now](#)

February 9–10, 2015  
Walter E. Washington Convention Center  
Washington, DC

### Please Come See PenBay Solutions at the Esri Federal GIS Conference in DC February 9th & 10th!

Washington, DC: Feb 9-10, Walter E. Washington Convention Center: **it's FREE\* for Federal Government Employees to attend** (click here to



### Download Federal Real Property White Paper

 **Facilities are Mission Critical**

How Enterprise Geographic Information Systems are Solving the Complex Challenges of Managing



### Download Data White Paper

 **GIS & the Facility Manager: the Data Value Proposition**

Geographic information systems (GIS) as a unifying technology platform for facility management.

# Facilities Are Mission Critical – More Information

facilities.maps.arcgis.com & esri.com/fm

HOME GALLERY MAP SCENE GROUPS Sign In

## ArcGIS for Facilities

A Mapping Solution for Your Real Property or Facility Management Organization

«

»

**Campus Place Finder**

**ZERO Market: Site Selection & Market Analysis**

**Leasing Space Based on Location**

**Fifty Largest Malls**

[Click here to download](#) Facilities Campus templates. [Click here to access videos](#) of ArcGIS for Facilities demonstrations. Help on ArcGIS Online can be found [here](#).



Understanding our world.