

Headquarters Air Combat Command

Enterprise Systems Management for Large Spatial Systems



Sean Kyzar
Systems Engineer
ACC GeoBase

This Briefing is:
UNCLASSIFIED

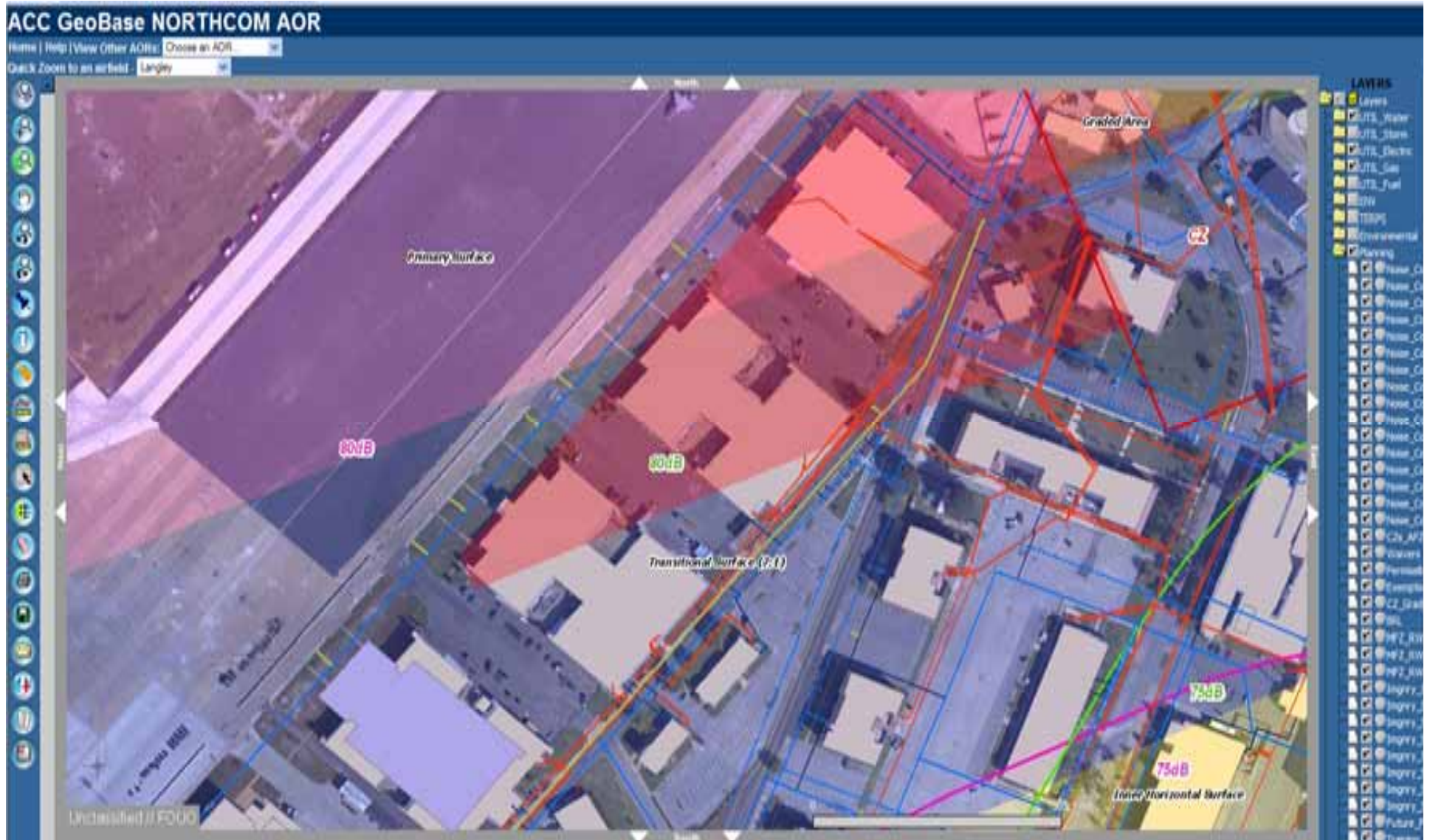


Agenda

- **Describe ACC GeoBase**
- **Enterprise overview/topology**
- **Historical view**
- **Current architecture/management**
- **Systems management in action**
- **Lessons learned**



ACC GeoBase





Enterprise Overview

Servers

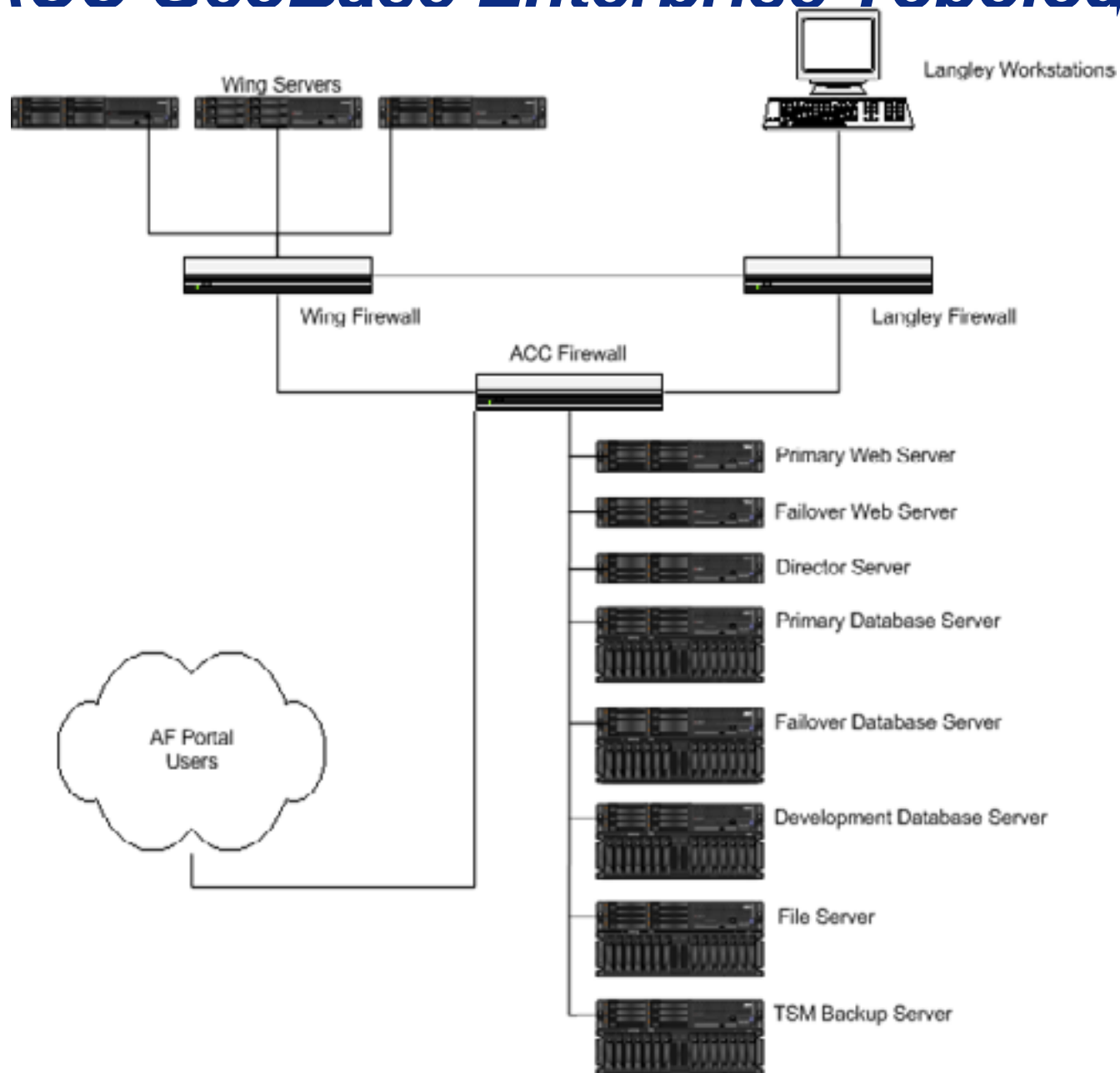
- **26 ArcSDE/Oracle Servers**
- **18 ArcIMS Servers**
- **5 Infrastructure Servers**

Locations

- **HQ ACC**
 - **15 Wings**
- **AFSOUTH**
- **CENTAF**



ACC GeoBase Enterprise Topology





Brief History

Pre-2007

- **Wing-level systems management**
- **Role of the GIS Analyst**
 - **User Training**
 - **Program Management**
 - **Database Administration**
 - **Web Administration**
 - **Server Administration**
- **Fringe skills were left behind**
 - **Extended down time**
 - **Little HQ/Wing-level system support**
 - **Policy adherence issues**



Brief History Cont.

- **No system oversight**
 - **Software policy creep**
 - **No backup policy**
 - **No policy-based templates**
 - **No centralized hardware monitoring**



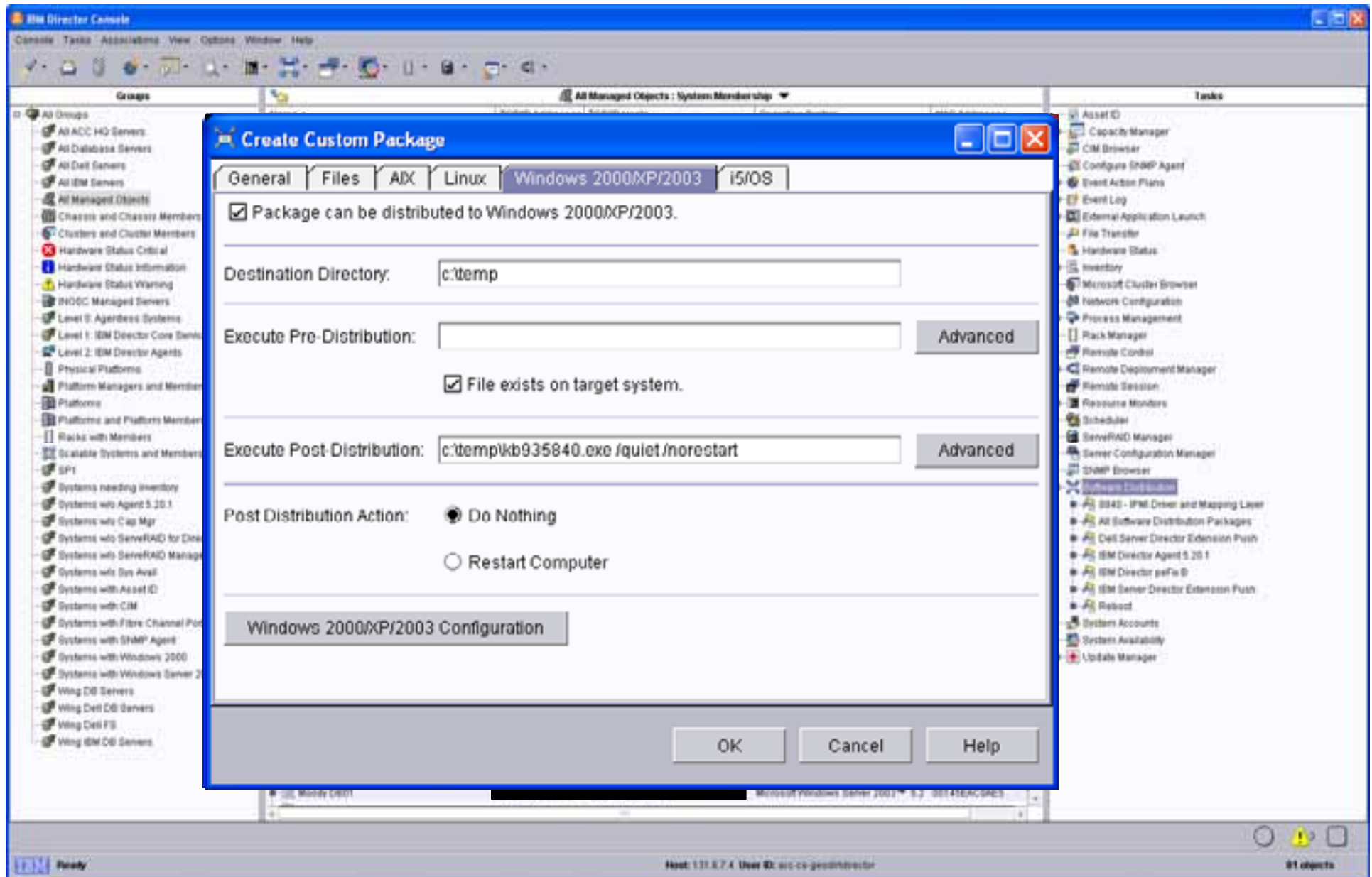
Current Environment

2007-Present

- **Centralized management introduced in conjunction with hardware upgrade across the board**
- **Current NOTAM workflow**
 - **PMO Status**
- **IBM Director hardware monitoring**
- **Tivoli Storage Manager for HQ Backups**
- **Windows ASR used at Wings (OS) RMAN scripts used for Oracle**



IBM Director Overview





Lessons Learned

- **Amount of coordination**
- **Initial storage purchase**
- **HQ network placement**



Road Ahead

2010 Architecture Upgrade

- **Platform move to Linux**

Questions?

Contact:

sean.kyzar.ctr@langley.af.mil

sean.kyzar@earthtech.com