



GIS

The Geographic Approach for the Nation



ESRI Federal User Conference

Washington, D.C. • February 17-19, 2010



More than an introduction to **ArcGIS Explorer**

Bern Szukalski
ESRI Redlands
bszukalski@esri.com



Topics for this session

- Introduction
- Overview of features
- Using ArcGIS Explorer effectively
- Customization
- New features & capabilities
- Demonstrations

*Note: Explorer 1200

What is ArcGIS Explorer

GIS for Everyone

- Provides a way to explore, visualize, share, and present geographic information
- Allows you to display and view information from a variety of sources, and add your own
- Enables you to communicate geographically and disseminate GIS to a broad audience
 - Within your department
 - With other departments and organizations
 - To geographic information users everywhere

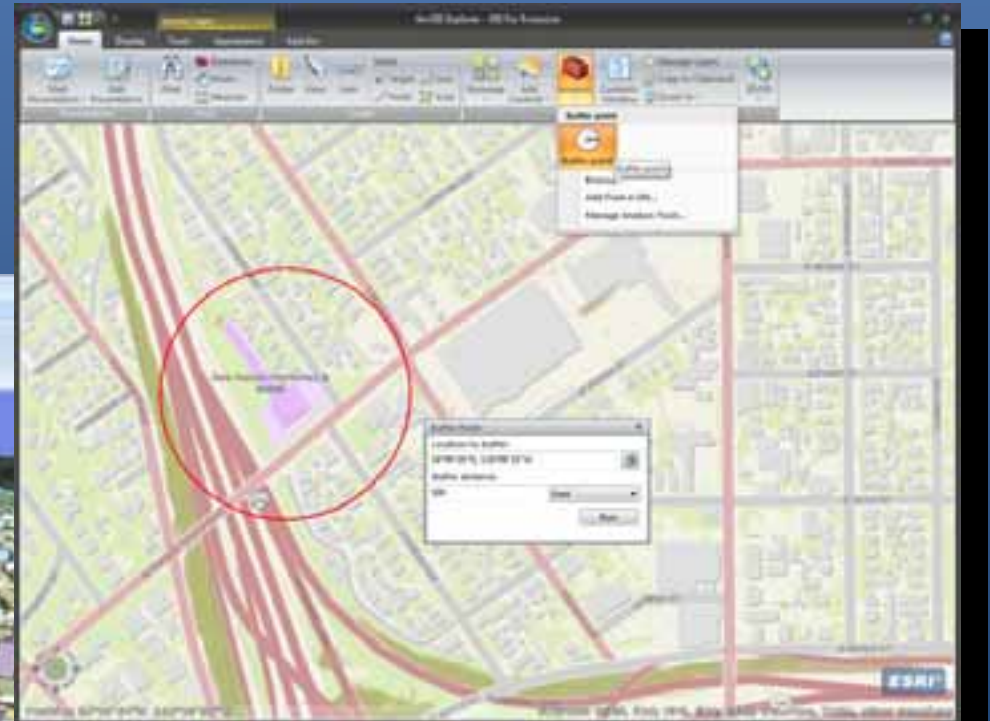
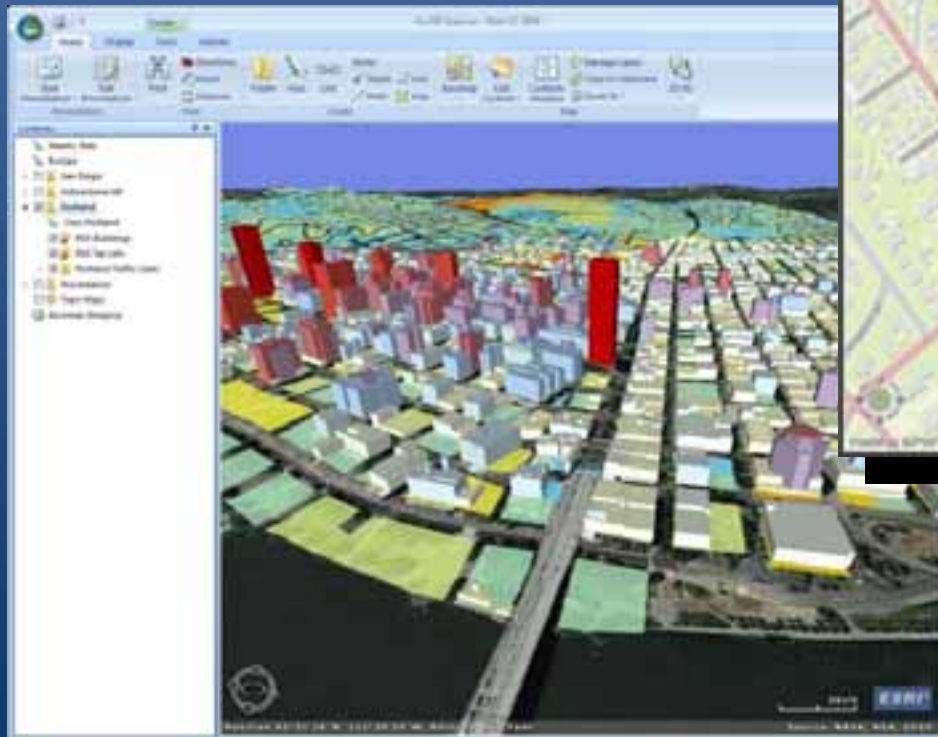
ArcGIS Explorer is for

- **GIS organizations** that want to deploy GIS data and capabilities to others, providing broad access to their GIS assets
- **Geographic information users** that need to use, visualize, and present GIS information, but may not be GIS experts themselves

Free to download and distribute from www.esri.com

With Explorer you can...

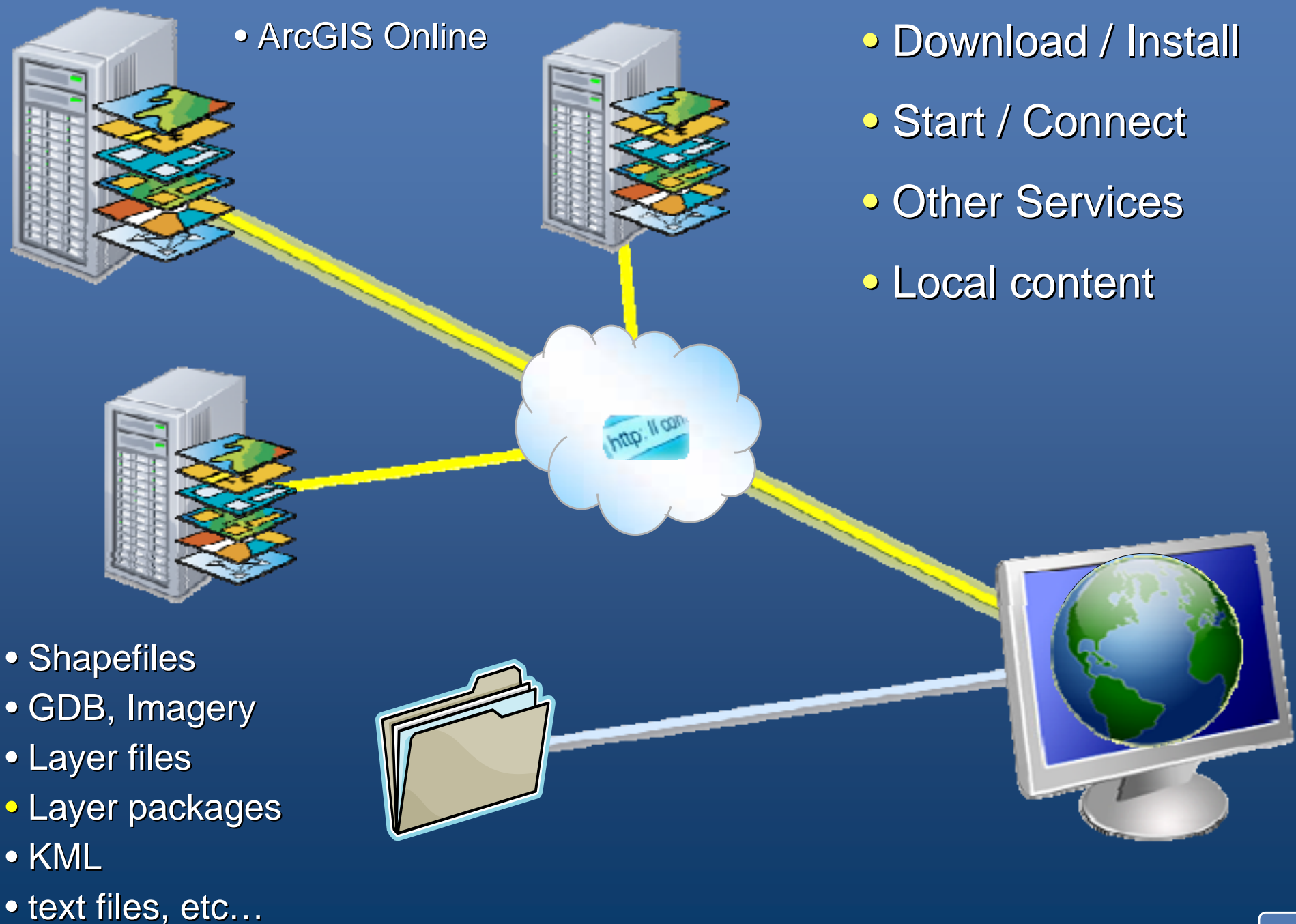
- Explore & visualize
- Customize and extend
- Present & communicate



Before we begin...

- Let's take a quick look at an example of what we'll be talking about...

Demonstration



ArcGIS Explorer is integrated with ArcGIS Online, which provides data, tools, and sharing.

ArcGIS Online



Default maps, layers
Subscription maps



- Gazetteer
- Routing
- Geocoding
- More...

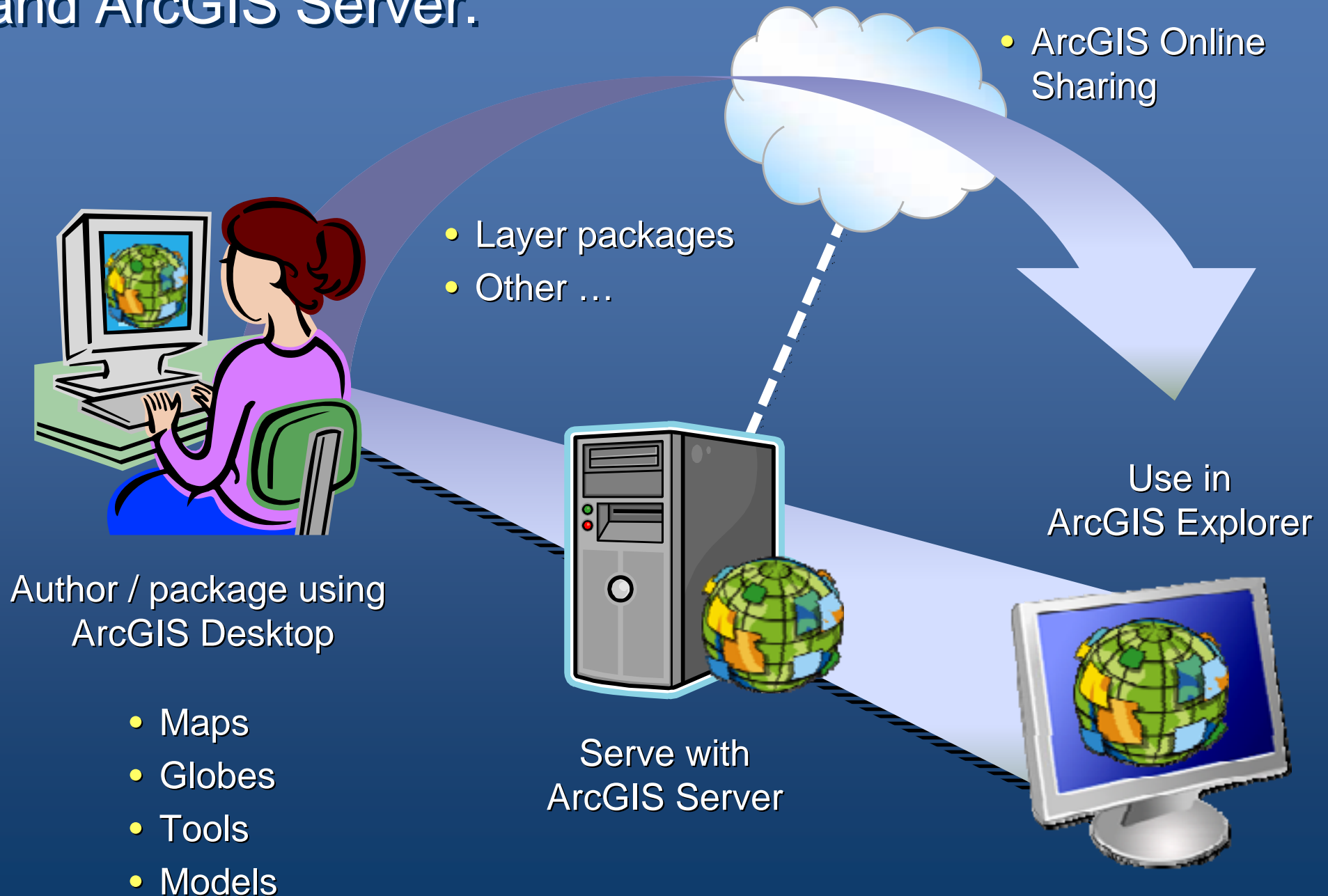


Sharing
Search – Discover – Use



ArcGIS Explorer

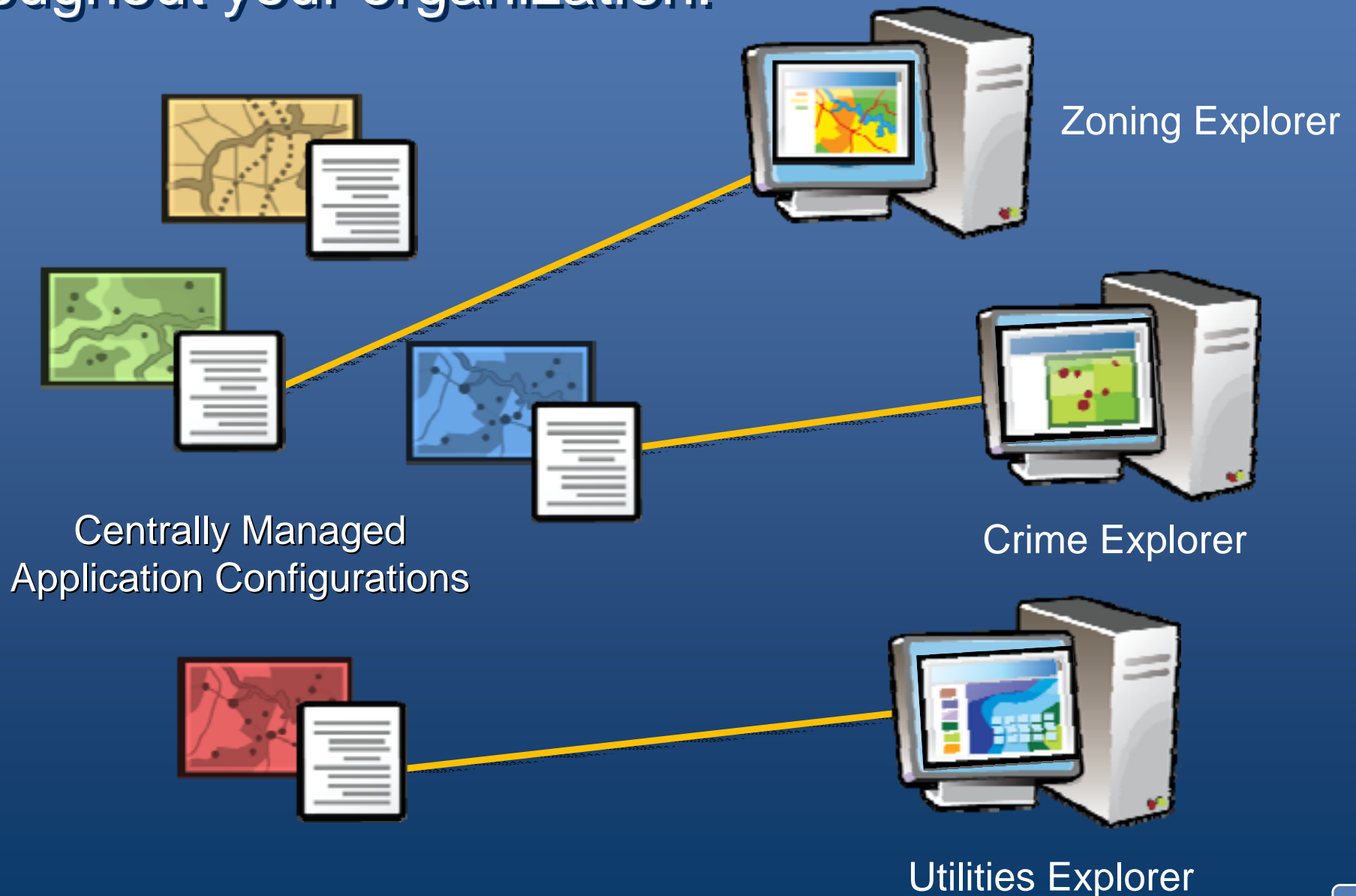
ArcGIS Explorer can be extended via ArcGIS Desktop and ArcGIS Server.



ArcGIS Explorer enables anyone to communicate geographically.



ArcGIS Explorer can be easily tailored for specific users, and can be easily administered and deployed throughout your organization.



ArcGIS Explorer roles

- Author data and services to be used in Explorer
- Assemble maps and presentations
- Use maps and presentations





Navigation

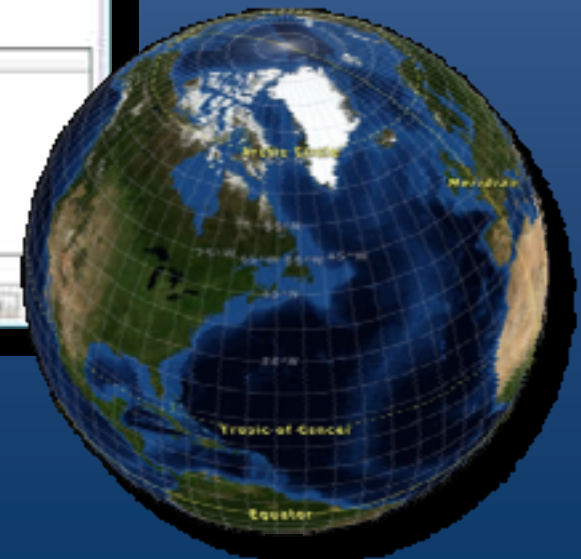
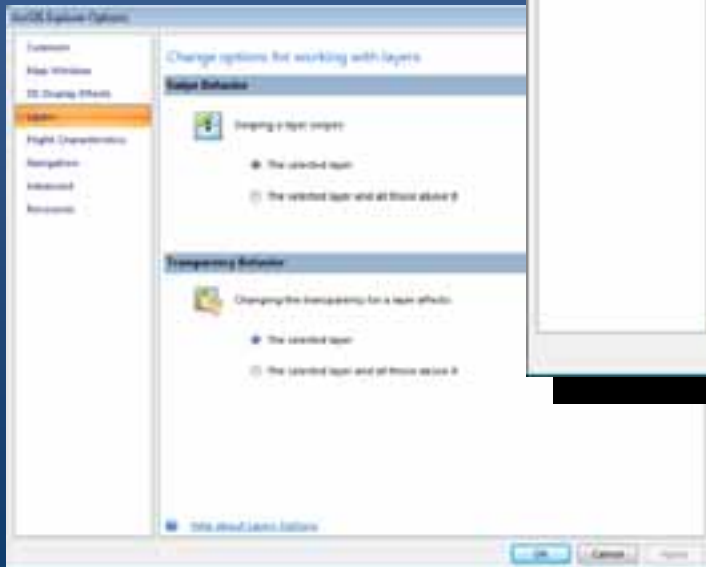
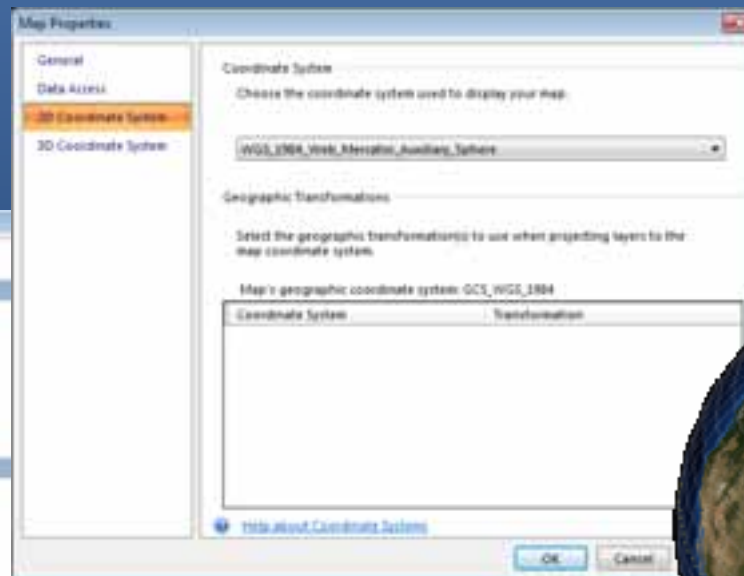
- The navigator, mouse, and keyboard



To do this	Press
Move left. Turn left while flying.	A or ← (left arrow)
Move right. Turn right while flying.	D or → (right arrow)
Rotate left.	V or Shift + ← (left arrow)
Rotate right.	B or Shift + → (right arrow)
Move forward or up.	↑ (up arrow) or W
Move back or down.	↓ (down arrow) or S
Move straight up.	Ctrl + ↑ key
Move straight down.	Ctrl + ↓ key
Zoom in.	J or + key or Ctrl + ↑ (up arrow)
Zoom out.	L or = key or Ctrl + ↓ (down arrow)
Tilt up.	F or Page Up key or Shift + ↑ (up arrow)
Tilt down.	K or Page Down key or Shift + ↓ (down arrow)
Reset pivot (tilt) to look straight down.	P
Reset view to North.	N
Toggle flight.	F
Zoom map to full extent.	R
Switch target and observer.	O
Speed up flying.	Q
Cancel navigation or any movement.	Spacebar

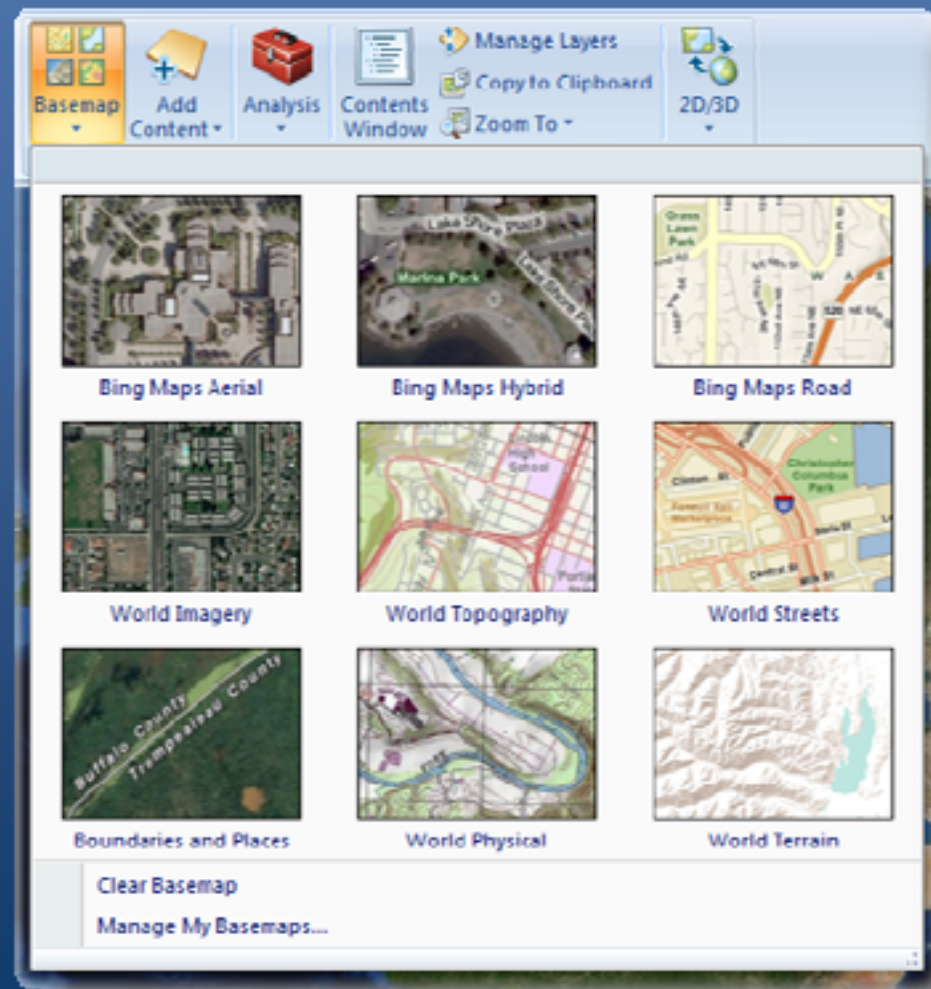
Your Preferences

- Display tab
- Map properties
- Options



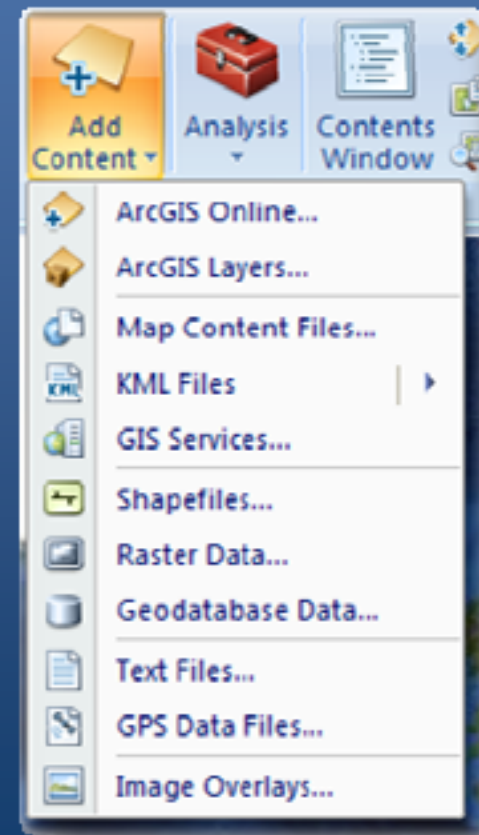
Basemap Gallery

- Choose from a variety of ready-to-use basemaps
 - ArcGIS Online
 - Bing™ Maps
- Add your own



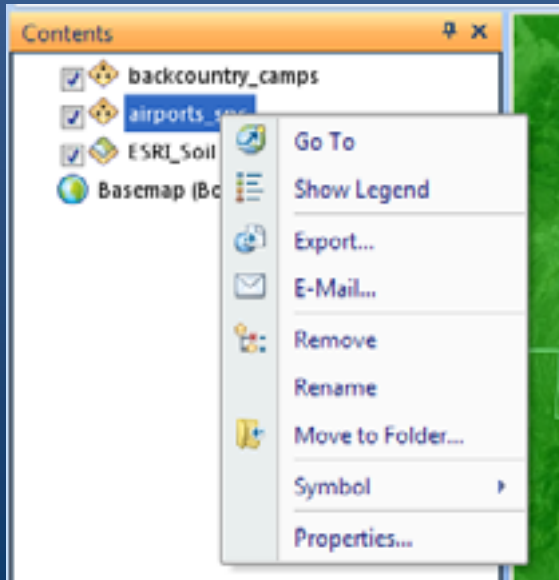
Add Content

- ArcGIS Online
- ArcGIS layer files (.lyr) and layer packages (.lpk)
- ArcGIS Explorer map content files
- KML, KML network link
- GIS Services
 - ArcGIS Server, ArcIMS, WMS
- GeoRSS
- Shapefiles
- Rasters
- Geodatabase
- Text files, GPX
- Image Overlays



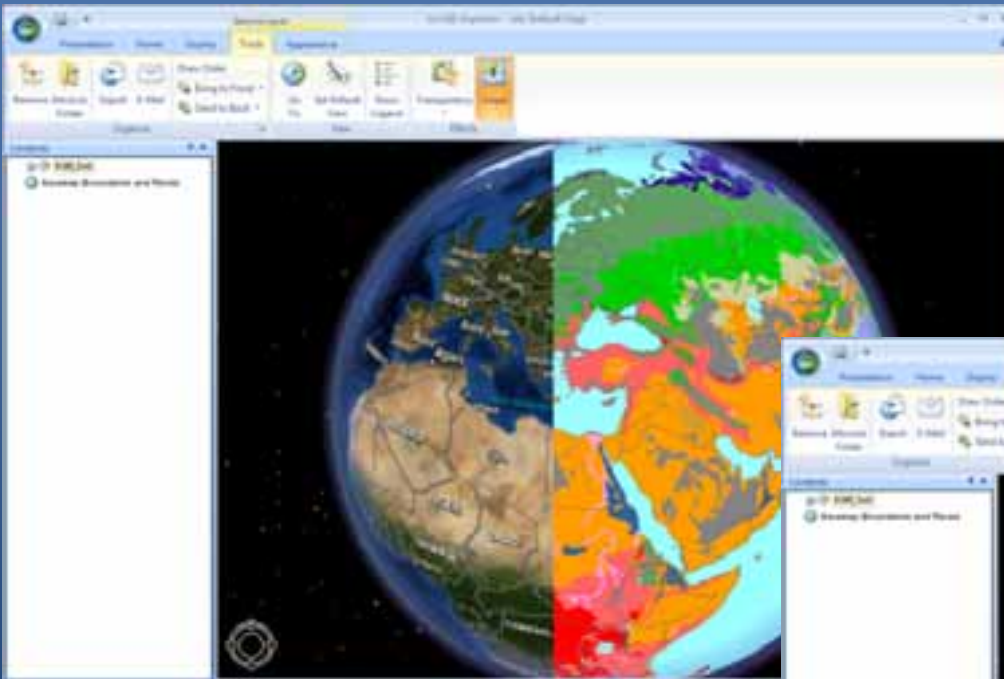
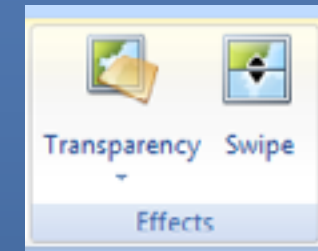
Working with Content

- Right click, or use available tabs
- Tabs, choices, and properties will vary depending on the content type (context)



Swipe, Transparency

- Useful when working with multiple layers



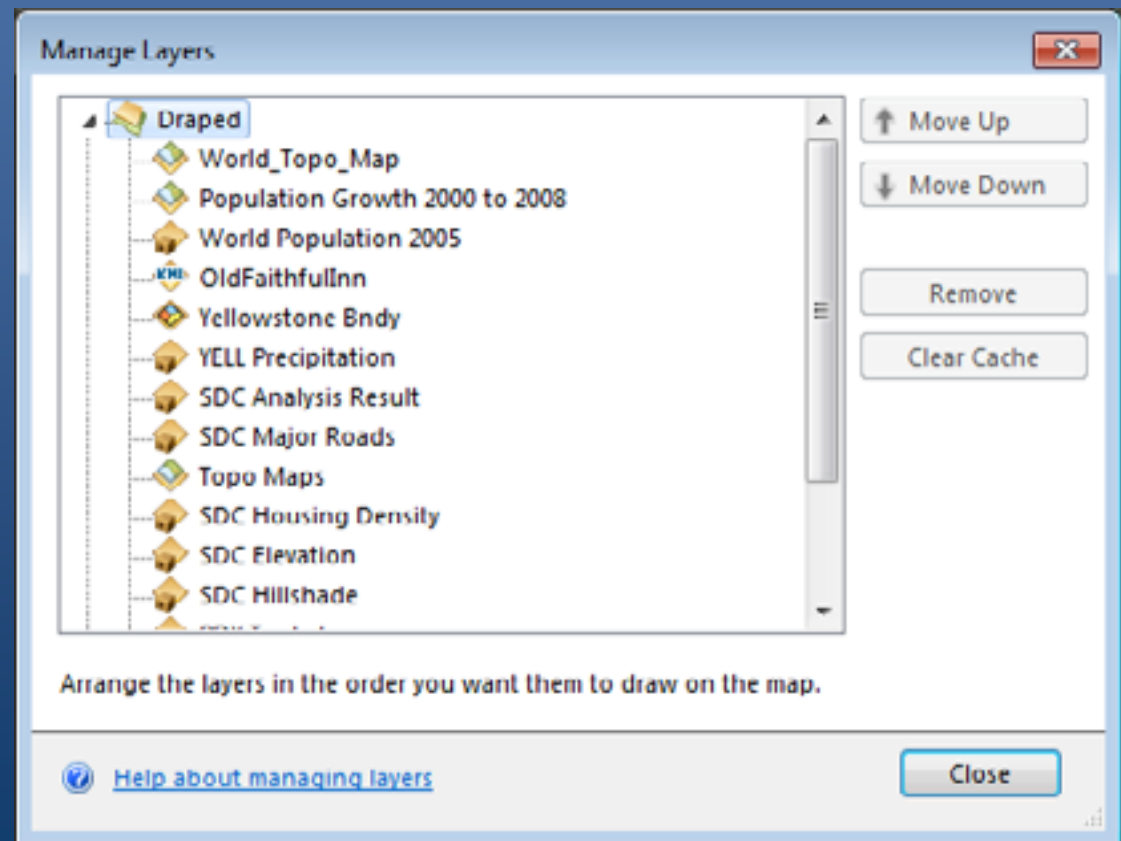
Swipe



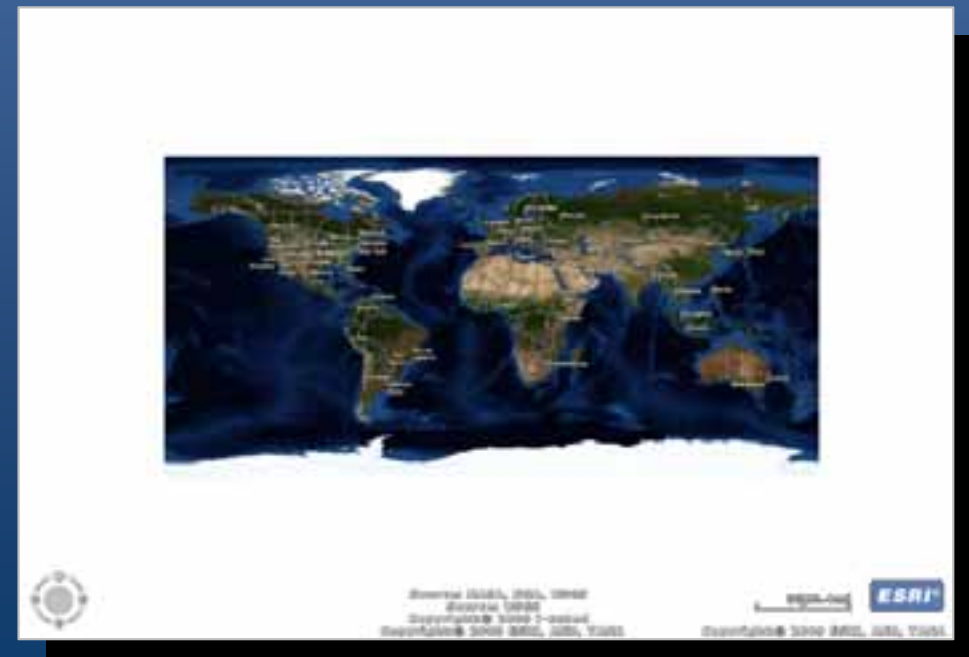
Transparency

Manage Layers

- Contents organize map items
 - Not necessarily drawing order
- Use Manage Layers to
 - Set drawing order
 - Cache management

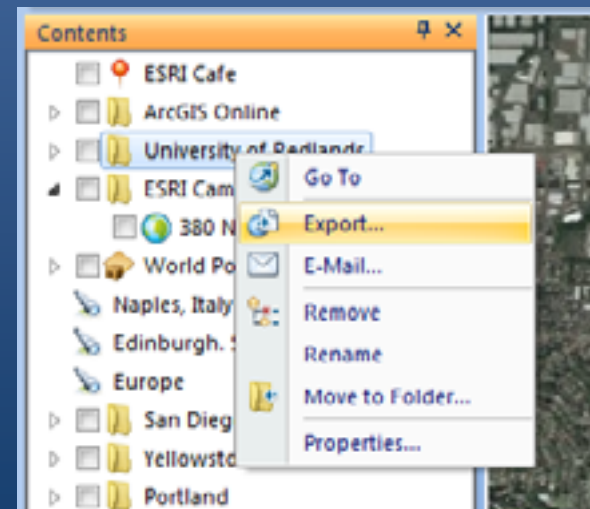
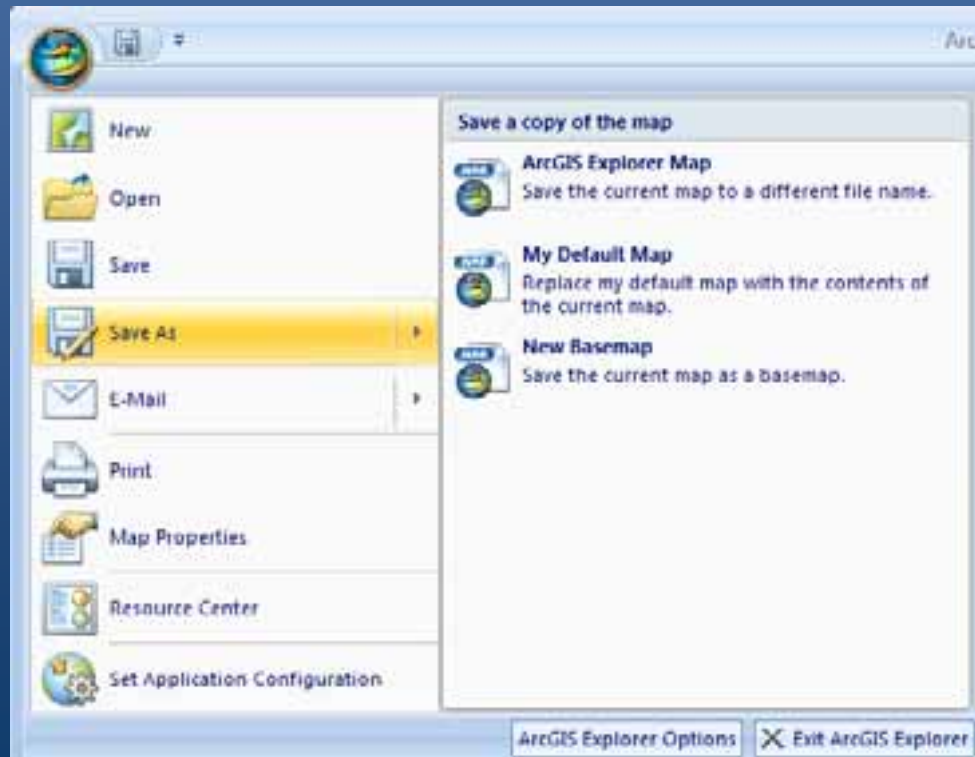


2D or 3D display



Saving and Sharing Your Map

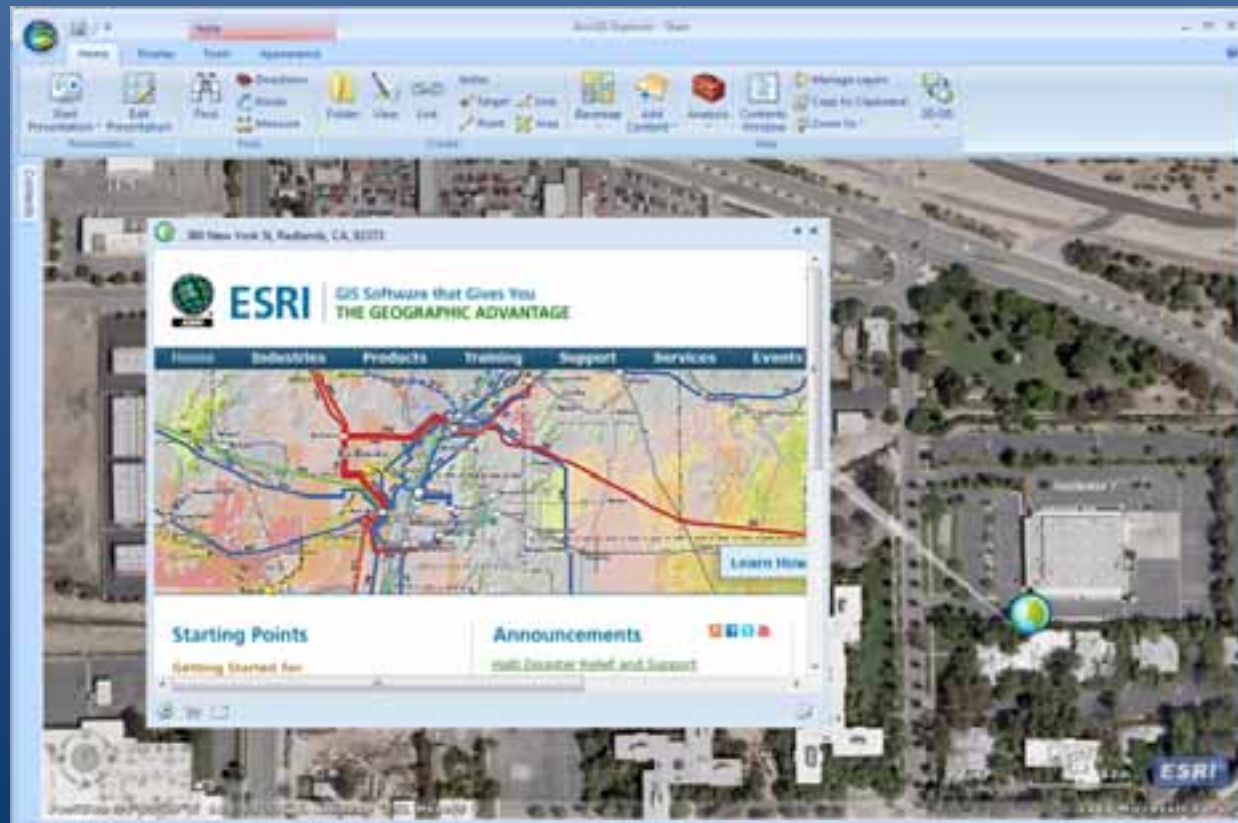
- Save entire map (.nmf)
 - As new map, default map, new basemap
- Save individual elements (.nmc)
- E-mail entire map, or e-mail individual elements



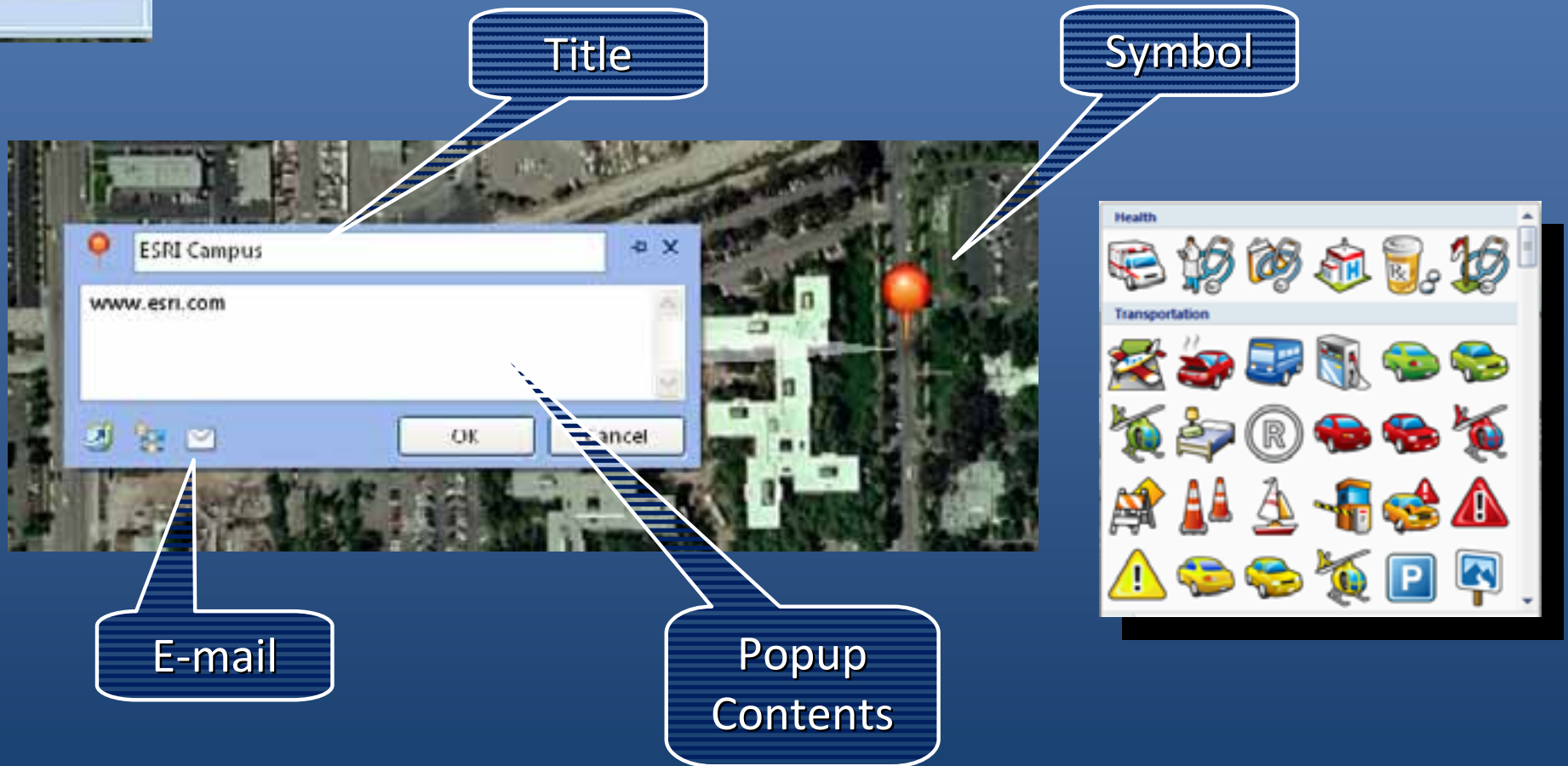
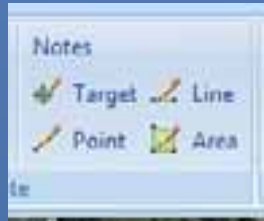
Demonstration

Notes Properties

- Integrate a wide variety of content
 - Documents, photos, reports, Web sites, etc.
- Popups
 - Add text, HTML, URLs, etc.



Creating Notes & Note properties



The main image shows an aerial map with a red circular marker. A popup window is open over the marker, displaying the title 'ESRI Campus' and the URL 'www.esri.com'. The popup has an 'OK' button and a 'Cancel' button. A speech bubble labeled 'Title' points to the title field, and another labeled 'Symbol' points to the red marker. A third speech bubble labeled 'E-mail' points to an envelope icon in the popup's footer. A fourth speech bubble labeled 'Popup Contents' points to the text area of the popup. To the right, a 'Health' symbol palette is shown, featuring various icons for medical and transportation themes.

Notes

- Target
- Line
- Point
- Area

Title

Symbol

ESRI Campus

www.esri.com

OK Cancel

E-mail

Popup Contents

Health

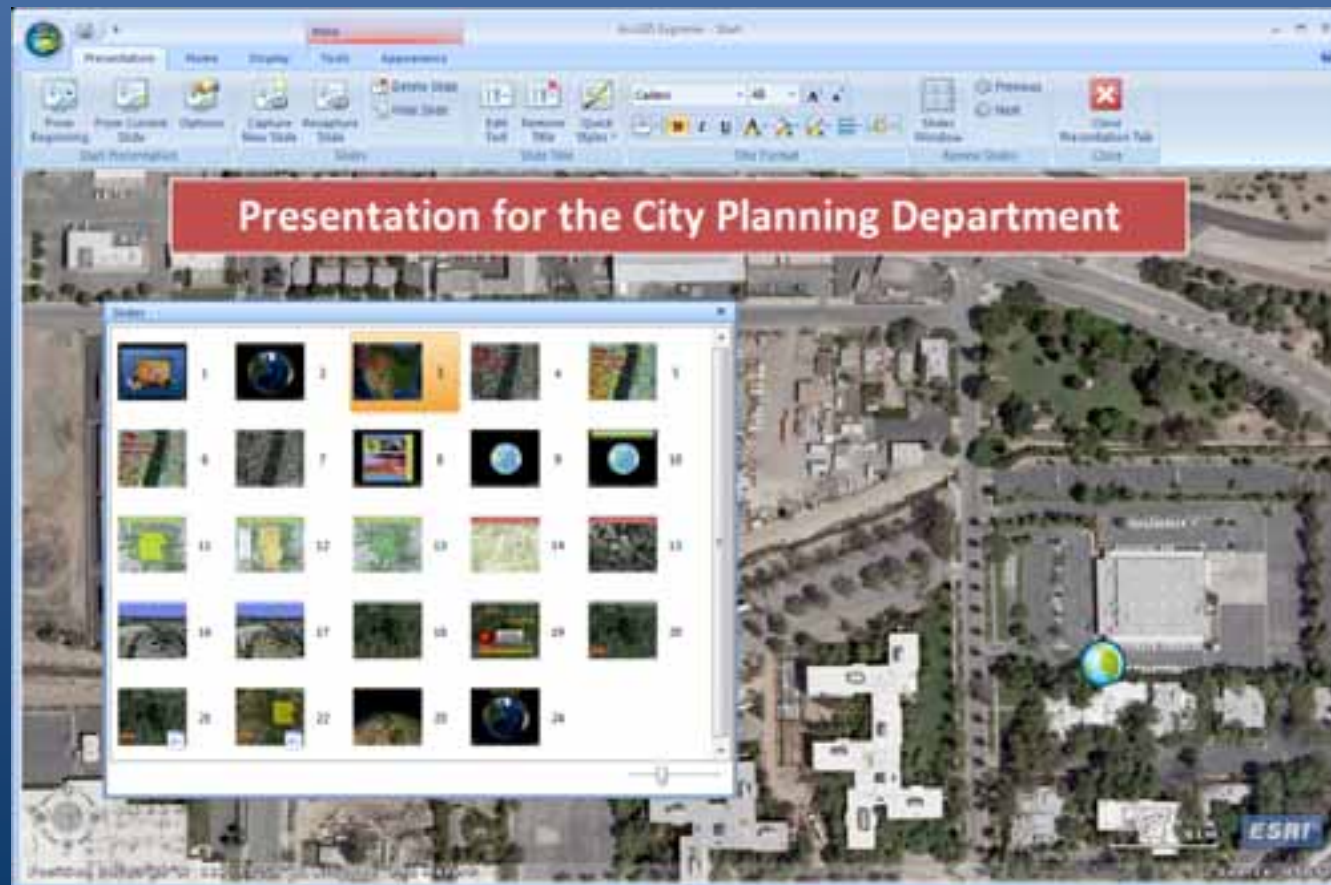
Transportation

ESRI

Demonstration

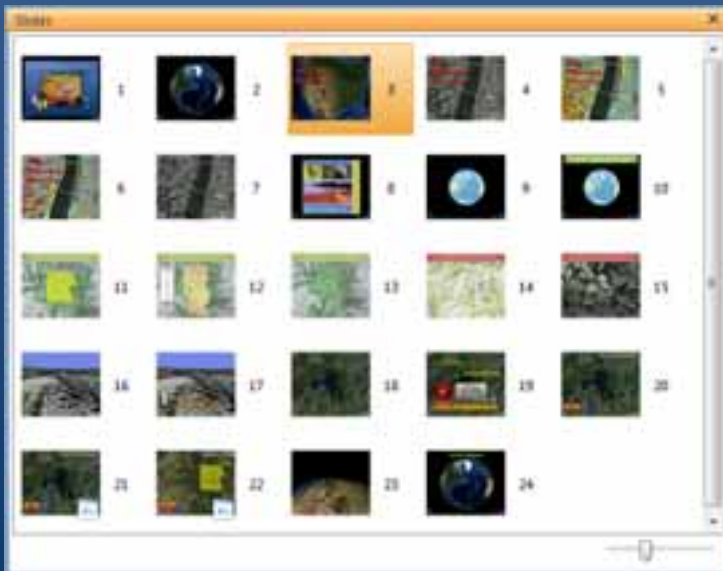
Presentations

- Dynamic geo-presentations that can use anything in your map
- Capture “slides” that remember drawing states, view, etc.



Authoring presentations

- Set view, layer visibility, legend, popup, etc.
- Create title (optional)
- Capture (or recapture) slide



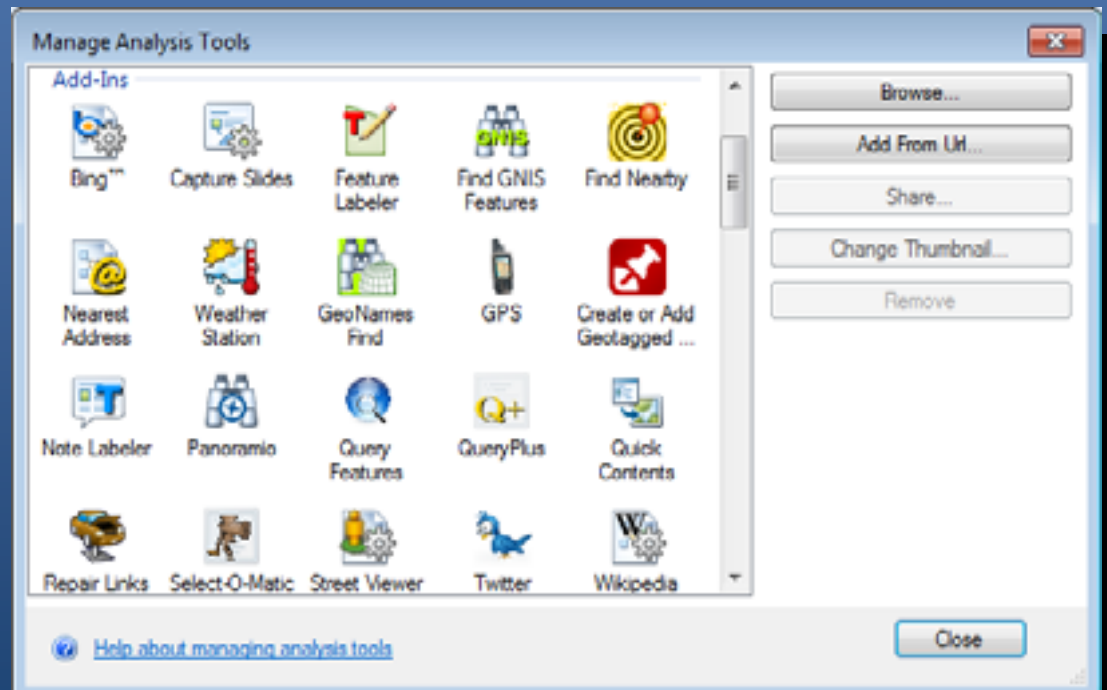
Presentations



Demonstration

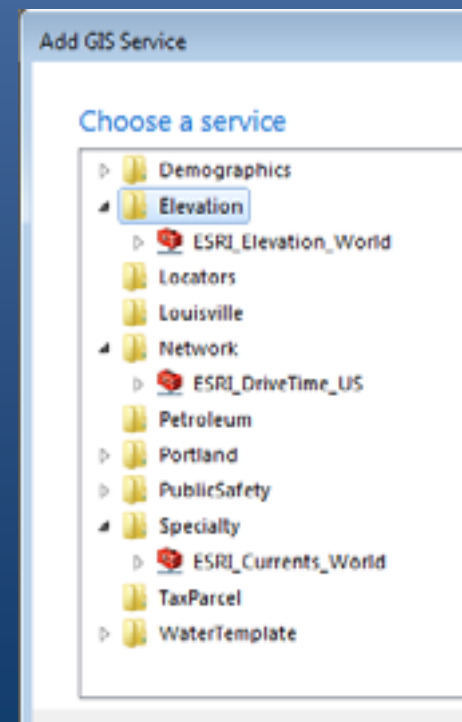
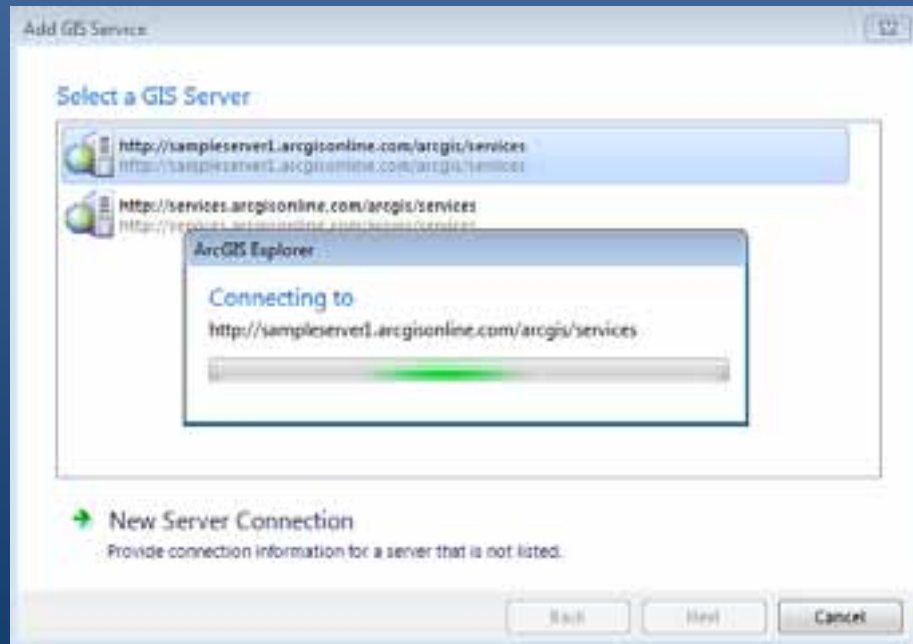
Analysis Gallery

- Manages GIS services you can connect to and add-ins



GIS Services

- Connect via server URL
 - Works like connecting to map services
- Available services shown with toolbox
- Author in ArcGIS Desktop, publish via ArcGIS Server



ArcGIS Explorer add-ins

- Many available via ArcGIS Online (ArcGIS Explorer Labs)
- Do not need to be ArcGIS Services
 - E.g., Panoramio, Yahoo! Traffic, NOAA Weather, etc.
- Shown in Add-Ins tab and Analysis Gallery
- Managed via Analysis Gallery, ArcGIS Explorer Options, and via Application Configurations
- Create using ArcGIS Explorer SDK



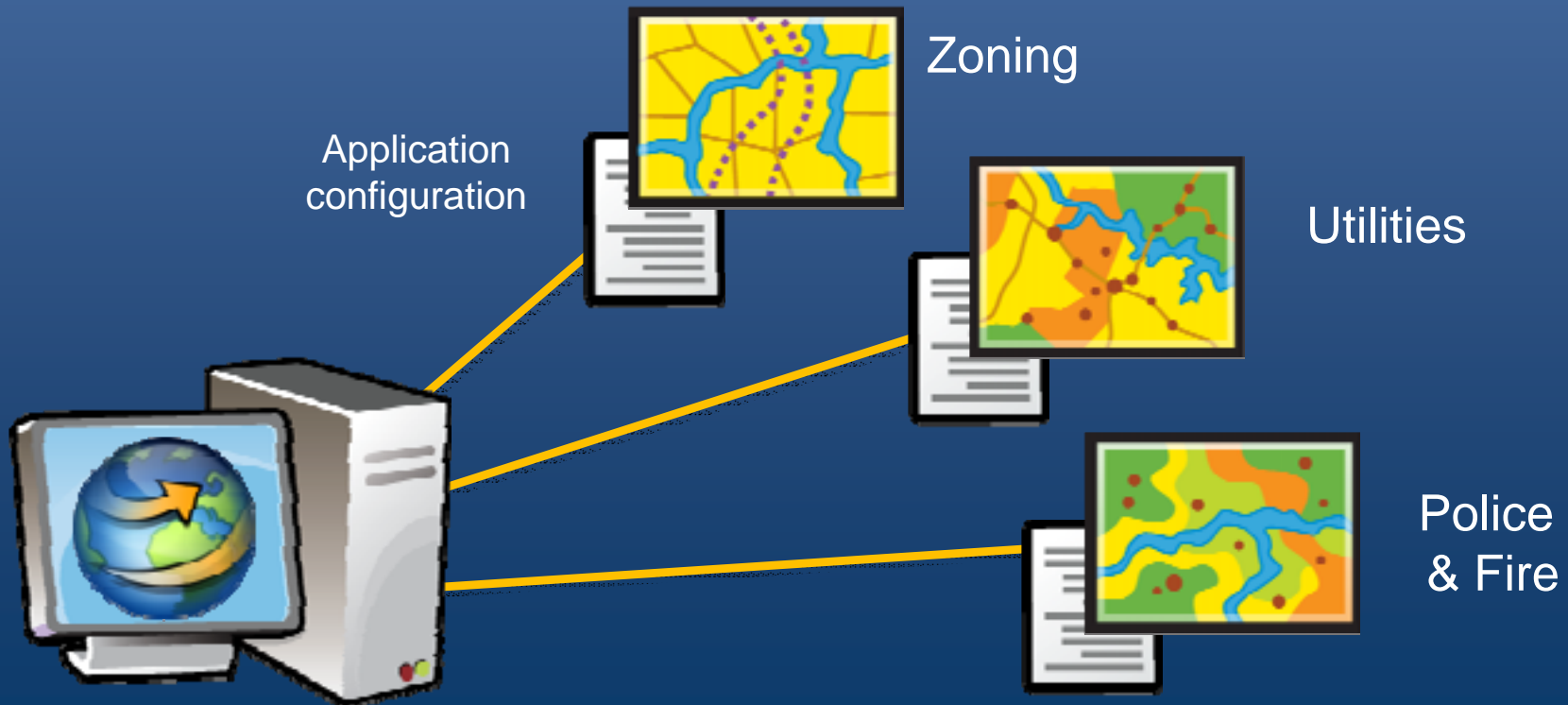
Demonstration

Configuring and Deploying

- Out-of-the-box functionality includes all tools necessary to assemble content, configure maps, etc
- Some functionality may not be relevant for your target users
- Your users may require the use of custom tools
- You can deploy and share customized versions of ArcGIS Explorer using **Application Configurations**

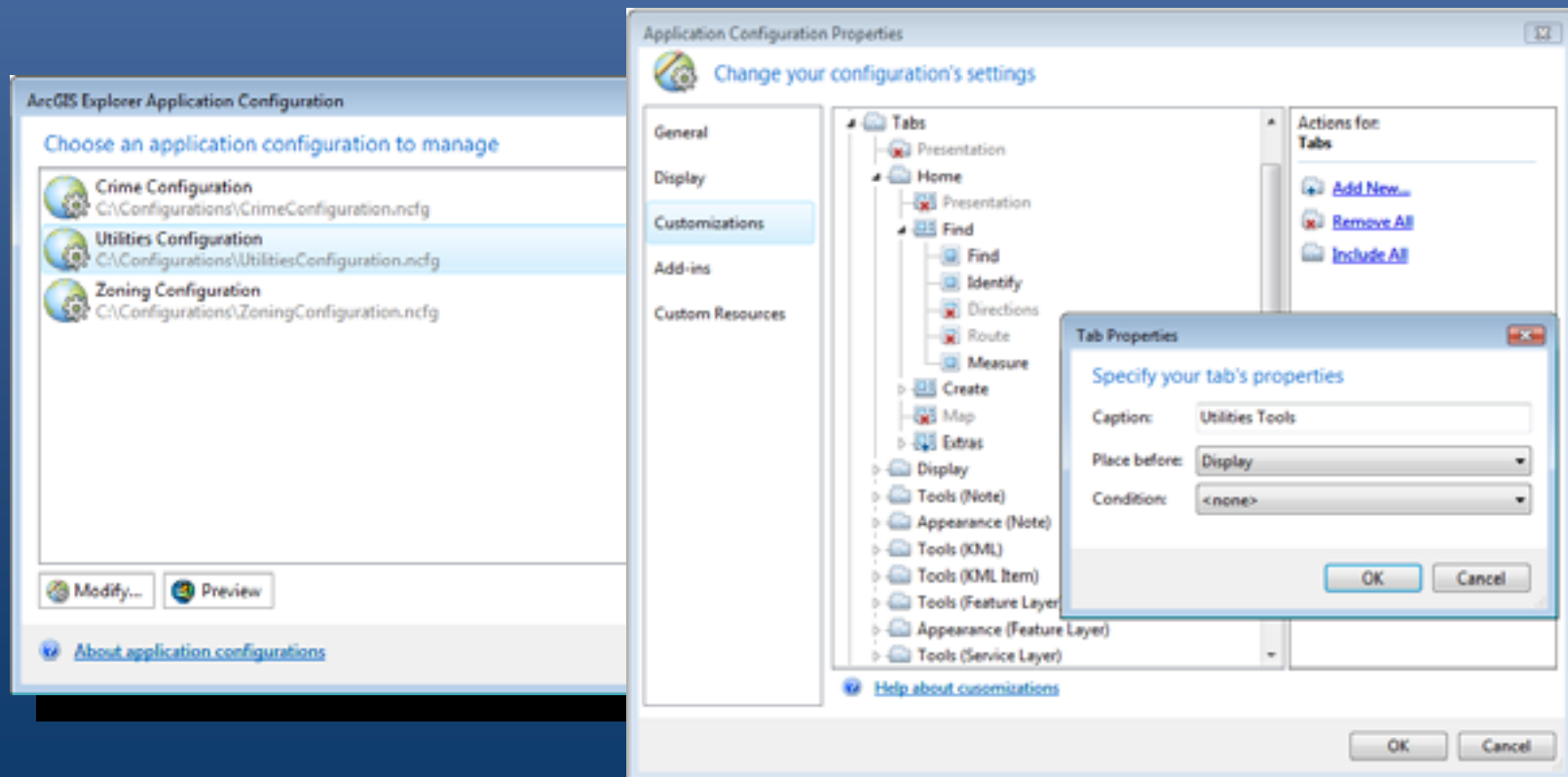
Application Configurations

- Manage application appearance and behavior
 - no programming required
- Stored in a single file (.ncfg)
- Easy to manage and deploy throughout an organization
 - File server, E-mail, Web server, ArcGIS Online



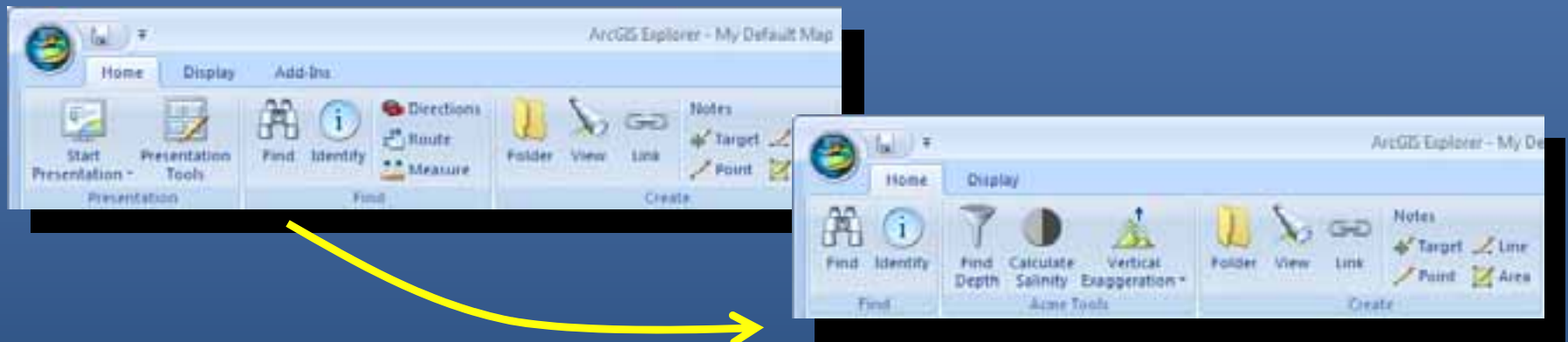
Application Configuration Manager

- Standalone application installed with Explorer
- Used to create, change, and manage configurations
- Configurations control capabilities, app look-and-feel, add-ins, and custom resources

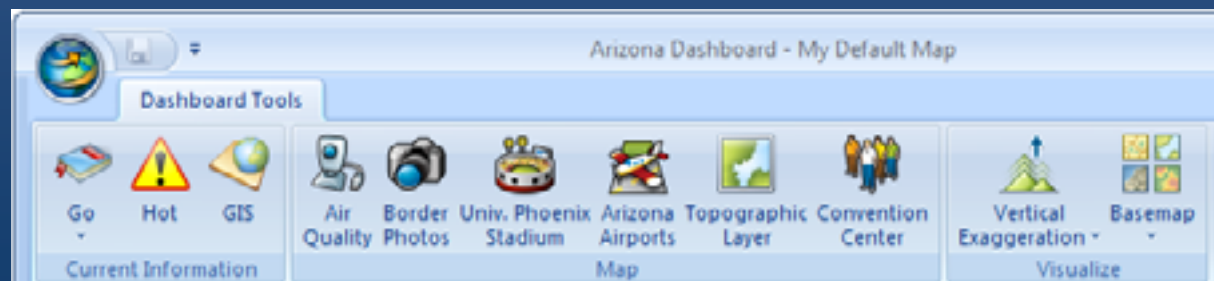


Changing the Ribbon

- Change menus, context menus, tabs, and controls
- Can be simple (add or remove a few controls)



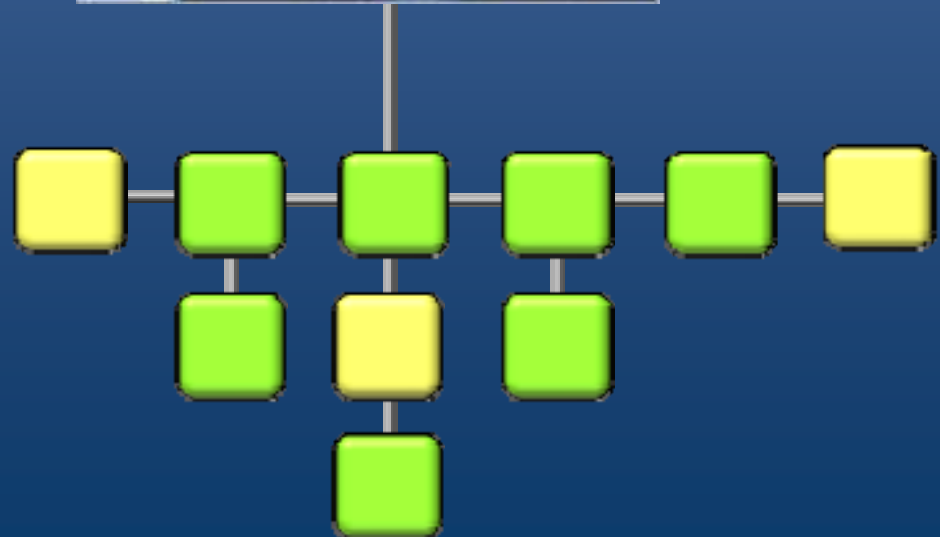
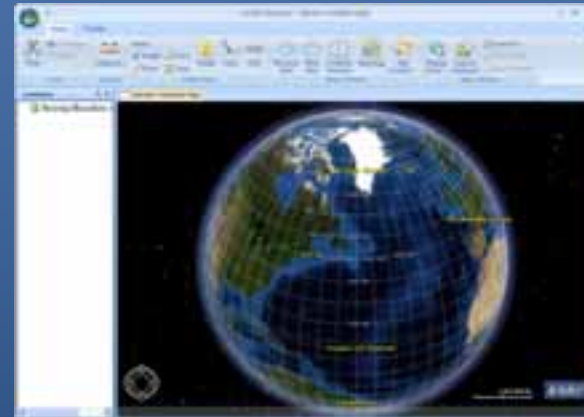
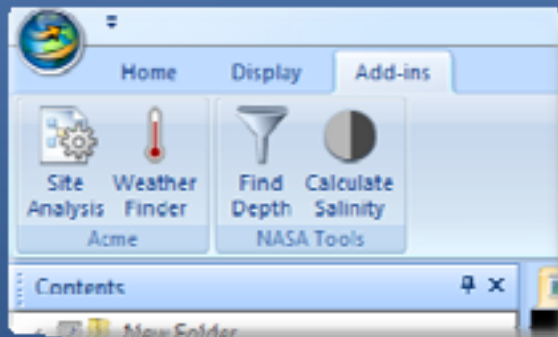
- Can be more extensive (create a custom “dashboard”)



Demonstration

ArcGIS Explorer SDK

- Powerful API for .NET developers for creating add-ins
- Includes Visual Studio templates, Help, samples



ArcGIS Explorer

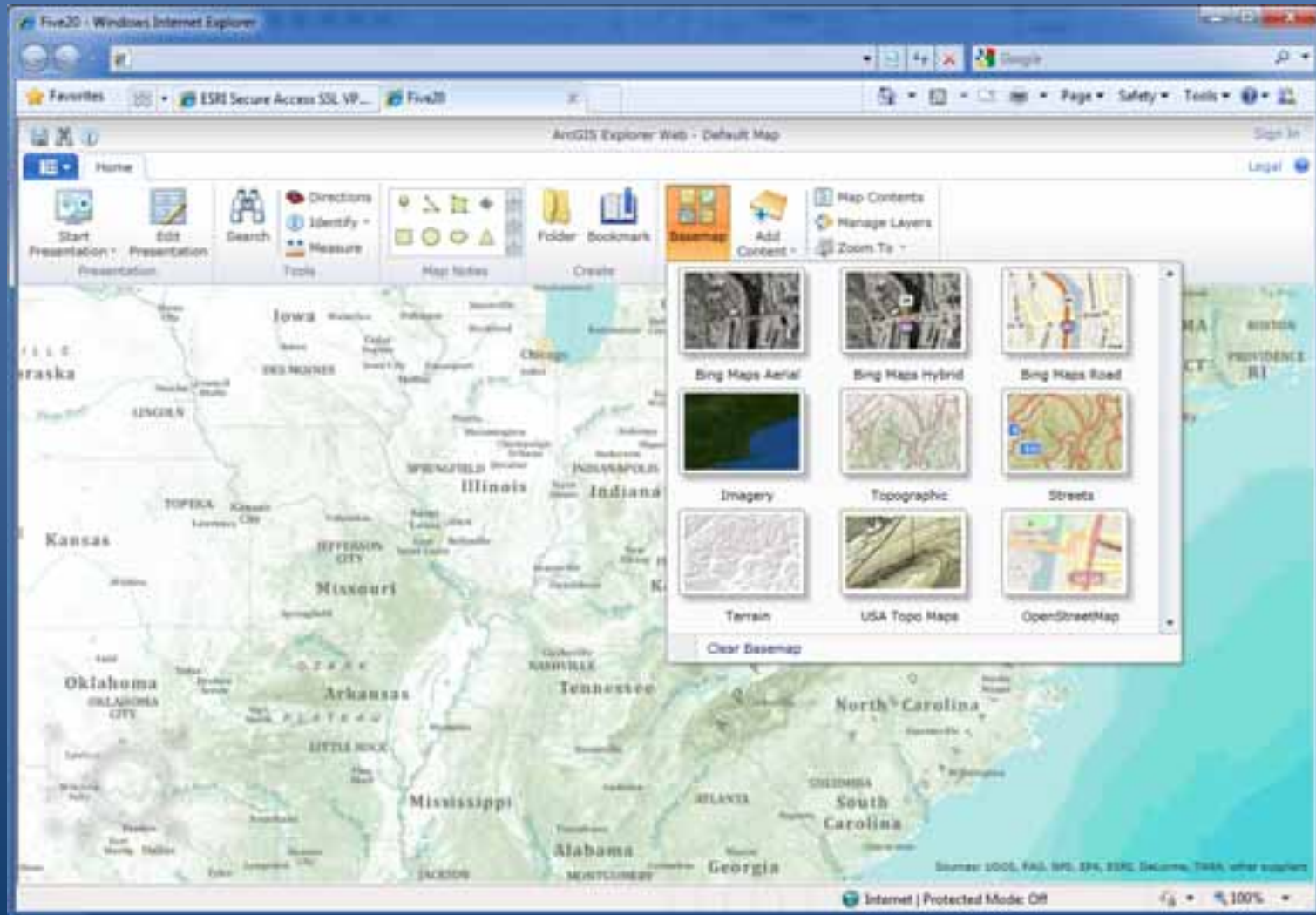
Release Schedule

- Build 1200 release in March
- Build 1500 release with ArcGIS 10 final



ArcGIS Explorer Online

explorer.arcgis.com



Key Points



- Free, easy to use, easy to deploy
- Ideal for Geographic Information Users
 - exploration, visualization, presentation, communication
- Supports a wide variety of data, and your existing data
- Integrated with ArcGIS Online, and your enterprise
- Customizable and extensible to fit into a wide variety of workflows and patterns
- A great way to provide broad access to GIS data and capabilities

GIS for Everyone



Thank You

For more information:

Bern Szukalski

ESRI Redlands

bszukalski@esri.com

