

Conflict Without Borders Sub-national and Transnational Areas of Conflict

Dennis King¹

Humanitarian Information Unit - State Department,



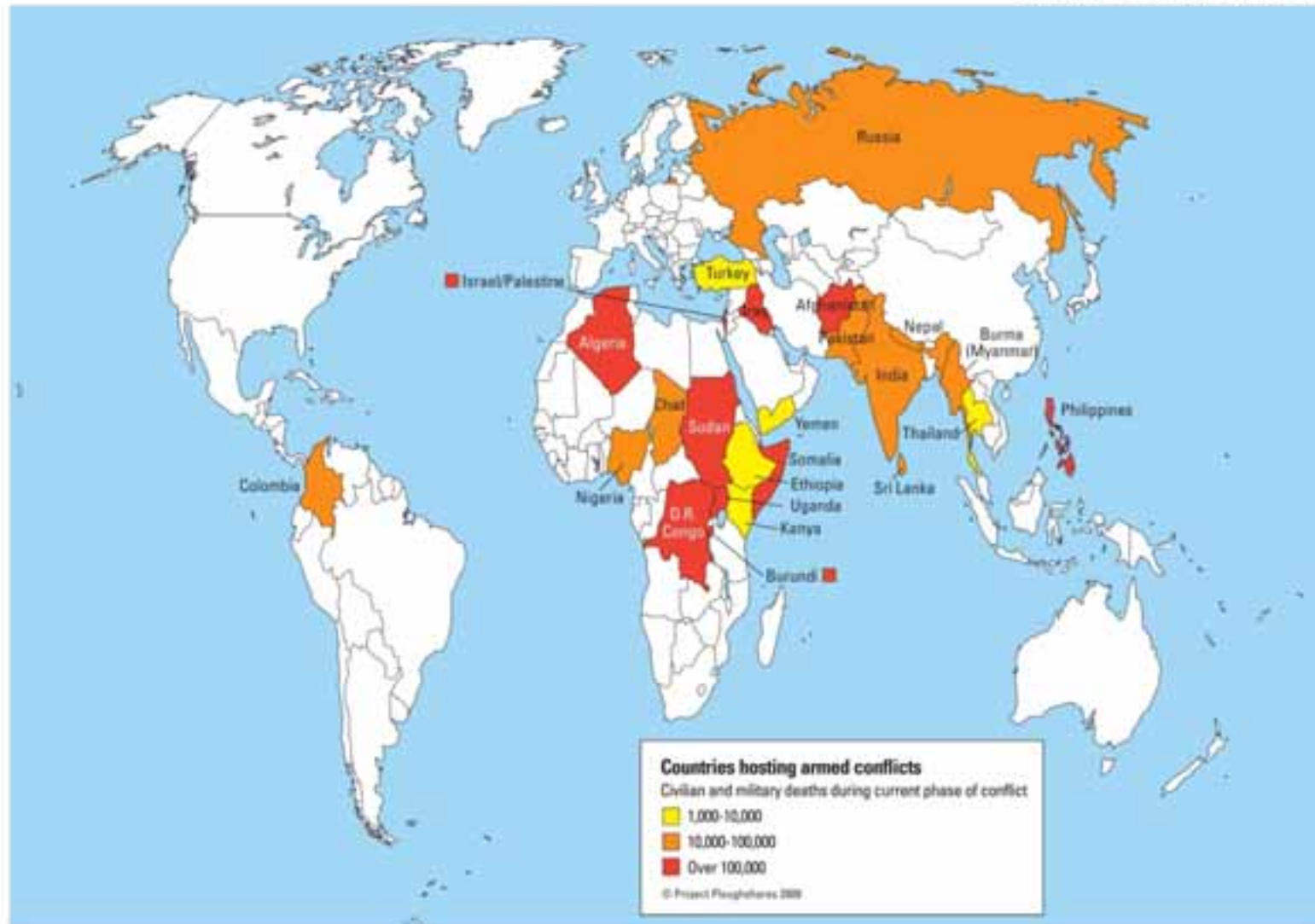
Conflict-affected fragile states

Country	Number of primary-aged children out of school
Afghanistan	2,082,000
Angola	800,000
Burundi	490,000
Cambodia	11,000
Central African Republic	287,000
Chad	594,000
Colombia	470,000
Côte d'Ivoire	1,333,000
Democratic Republic of Congo	5,036,000
Eritrea	208,000
Ethiopia	2,446,000
Guinea	381,000
Haiti	704,000
Iraq	632,000
Liberia	171,000
Myanmar (Burma)	467,000
Nepal	702,000
Nigeria	6,384,000
Pakistan	6,303,000
Republic of Congo	276,000
Rwanda	373,000
Sierra Leone	277,000
Somalia	1,231,000
Sri Lanka	47,000
Sudan	3,895,000
Timor-Leste	3,000
Uganda	1,151,000
Zimbabwe	429,000
TOTAL	38,554,000

Source: UNICEF, 2007 UN database
UNICEF 2007 unpublished data



Armed Conflicts in 2008

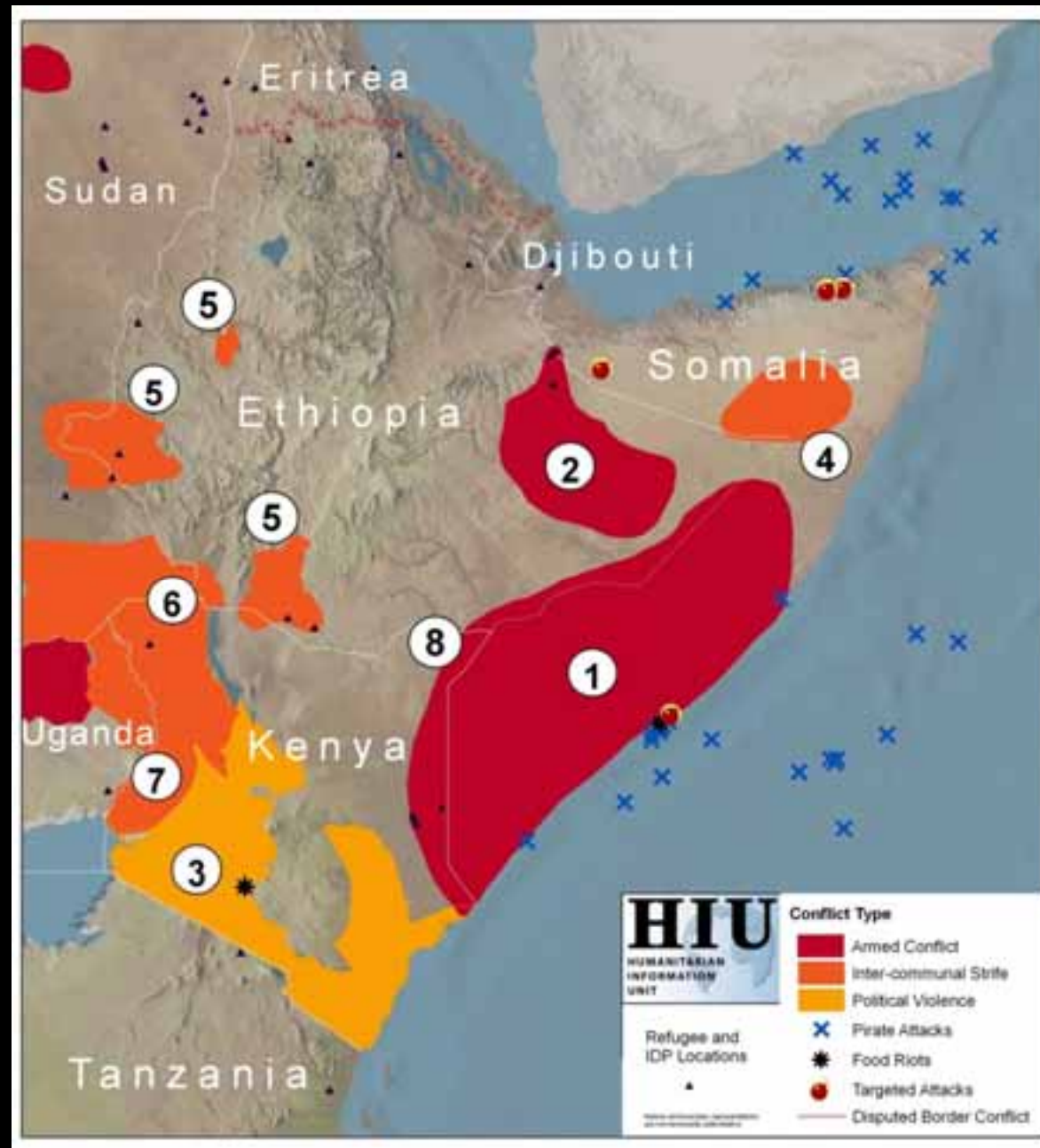


Project Ploughshares
57 Erb Street West | Waterloo, Ontario, Canada N2L 6C2
Tel. 519-888-6541 Email: plough@ploughshares.ca
www.ploughshares.ca

Definitions and Methodology

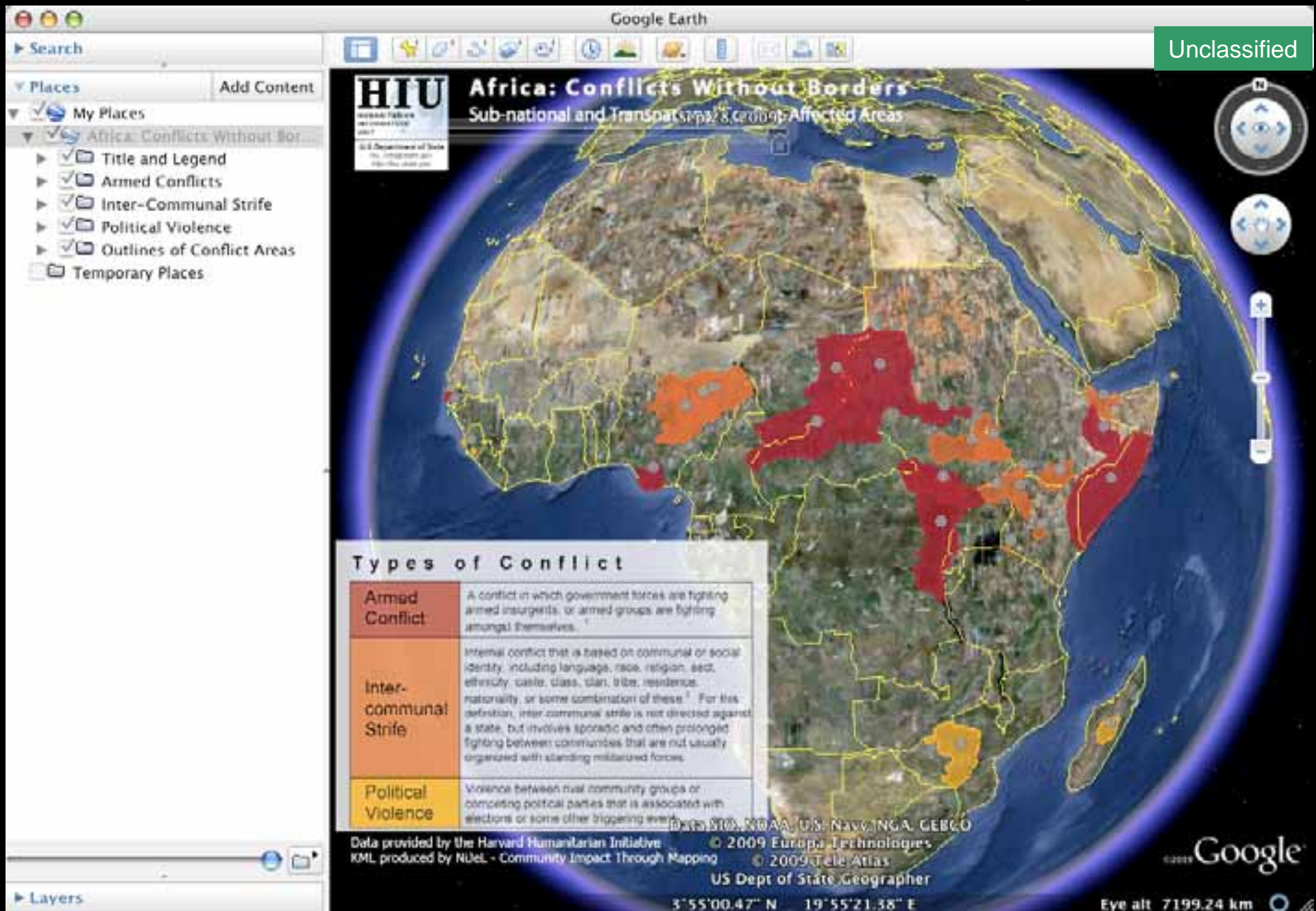
Areas of Armed Conflict, Inter-communal Strife, and Political Violence are drawn around locations of reported conflict incidents, concentrations of Internally Displaced Persons (IDPs), cross-border rebels bases, and refugee camps in neighboring countries.

Africa: Conflicts Without Borders



Conflicts Without Borders - IESRI
February 18, 2010

Africa: Conflicts Without Borders - Google Earth



Africa: Conflicts Without Borders - Google Earth

Google Earth

Unclassified

Search

Places

Add Content

My Places

Africa: Conflicts Without Borders

Title and Legend

Armed Conflicts

Inter-Communal Strife

Political Violence

Outlines of Conflict Areas

Temporary Places

HIU

Africa: Conflicts Without Borders

Sub-national and Transnational Conflict-Affected Areas

Types

Armed Conflict

Inter-communal Strife

Political Violence

Nigeria (northern)

EMERGENCY Nigeria (northern)

LOCATION Nigeria (northern)

CONFLICT TYPE Intercommunal Strife

SEVERITY INDICATOR: Over 700 dead and thousands displaced. (Reuters, Aug 2009)

BACKGROUND In Jul - Aug 2009, conflict broke out between radical Islamic sect, Boko Haram, and Christian communities and government forces. Started in Bauchi state and spread to Yobe, Kano, and Borno. UN OCHA

Full HIU Conflict Without Borders Map

Data provided by KML produced by

US Dept of State Geographer

6°28'43.91" N 19°12'29.10" E

Eye alt 7545.04 km

Google

Africa: Conflicts Without Borders - Google Earth

Unclassified

Places

- My Places
 - Africa: Conflicts Without Borders
 - Title and Legend
 - Armed Conflicts
 - Labels
 - Angola (west) Cabina
 - Burundi (west)
 - Central African Republic (north)
 - Central African Republic (north)
 - Chad (east) 2009
 - Chad (east) 2008
 - DRC (east) Kivus, Haut-
 - DRC (east) Kivus and Ituri
 - Ethiopia (east) Ogaden/Somalia
 - Mali (northeast)
 - Niger (northwest)
 - Nigeria (south) Rivers State Delta
 - Nigeria (south) Rivers State Delta
 - Senegal (south) Casamance, Ziguinchor
 - Senegal (Casamance - Ziguinchor)
 - Somalia (south, central)
 - Somalia (south, central)
 - Sudan (transition zone) - Abyei
 - Sudan (west), Chad (east) - Darfur
 - Sudan (west), Chad (east) - Darfur
 - Sudan (west) Chad (east)
 - Sudan (N/S transition zone) Abyei
 - Uganda (north), Sudan (south), DRC
 - Uganda (north), Sudan (south)
 - Inter-Communal Strife
 - Political Violence
 - Outlines of Conflict Areas

Types of Conflict

Armed Conflict	A conflict in which government forces are fighting armed insurgents, or armed groups are fighting amongst themselves.
Inter-communal Strife	Internal conflict that is based on communal or social identity, including language, race, religion, sect, ethnicity, caste, class, clan, tribe, residence, nationality, or some combination of these. For this definition, inter-communal strife is not directed against a state, but involves sporadic and often prolonged fighting between communities that are not usually organized with standing militarized forces.
Political Violence	Violence between rival community groups or competing political parties that is associated with elections or some other triggering event.

© 2009 Google
 Data provided by the Harvard Humanitarian Initiative
 KML produced by NUEL - Community Impact Through Mapping
 © 2009 Europa Technologies
 © 2009 Tele Atlas
 US Dept of State Geographer

Eye alt: 5848.35 km

Africa: Conflicts Without Borders - Google Earth

Google Earth

Unclassified

Search

Places

My Places

Africa: Conflicts Without Borders

- ✓ Title and Legend
- ✓ Armed Conflicts
- ✓ Inter-Communal Strife
- ✓ Political Violence
- ✓ Outlines of Conflict Areas
- Temporary Places

HIU Africa: Conflicts Without Borders Dec 2006 International and Transnational Conflict-Affected Areas

Types of Conflict

Armed Conflict	A conflict in which government forces are fighting armed insurgents, or armed groups are fighting amongst themselves.
Inter-communal Strife	Internal conflict that is based on communal or social identity, including language, race, religion, sect, ethnicity, caste, class, clan, tribe, residence, nationality, or some combination of these. ¹ For this definition, inter-communal strife is not directed against a state, but involves sporadic and often prolonged fighting between communities that are not usually organized with standing militarized forces.
Political Violence	Violence between rival community groups or competing political parties that is associated with elections or some other triggering event.

© 2009 Google
Data provided by the Harvard Humanitarian Initiative © 2009 Europa Technologies
KML produced by NIEI - Community Impact Through Mapping © 2009 Tele Atlas
US Dept of State Geographer

7°20'13.76" N 5°36'40.58" E Eye alt 5848.35 km

Google

Africa: Conflicts Without Borders - Google Earth

Unclassified

Places

- My Places
- Africa: Conflicts Without Borders
 - Title and Legend
 - Armed Conflicts
 - Inter-Communal Strife
 - Political Violence
 - Outlines of Conflict Areas
 - Armed Conflicts
 - Angola (west) Cabina
 - Burundi (west)
 - Central African Republic (north)
 - Central African Republic (north)
 - Chad (east) 2009
 - Chad (east) 2008
 - DRC (east) Kivus, Haut-
 - DRC (east) Kivus and Ituri
 - Ethiopia (east) Ogaden/Somali
 - Mali (northeast)
 - Niger (northwest)
 - Nigeria (south) Rivers State De
 - Nigeria (south) Rivers State De
 - Senegal (south) Casamance, Zi
 - Senegal (Casamance - Ziguin
 - Somalia (south, central)
 - Somalia (south, central)
 - Sudan (transition zone) - Aby
 - Sudan (west), Chad (east) - Da**
 - Sudan (west), Chad (east) - Da**
 - Sudan (west) Chad (east)
 - Sudan (N/S transition zone) Al
 - Uganda (north), Sudan (south)
 - Uganda (north), Sudan (south)

Types of Conflict

Armed Conflict	A conflict in which government forces, armed insurgents, or armed groups fight against each other.
Inter-communal Strife	Internal conflict that is based on ethnicity, language, race, religion, class, clan, tribe, or nationality, or some combination of these factors. Inter-communal strife is a state, but involves sporadic and fighting between communities that organized with standing militaries.
Political Violence	Violence between rival community groups competing for political power that is a result of elections or some other triggering event.

Sudan (west), Chad (east) - Darfur

EMERGENCY	Sudan - Darfur / Chad - East
LOCATION	Sudan (west) Darfur, Chad (east)
FULL HIU MAP REFERENCE	4
CONFLICT TYPE	Major Armed Conflict
BACKGROUND	Fighting involving African tribal rebel groups, State-supported Arab militias, and Government armed forces, as well as attacks against displaced civilians, peacekeepers, and aid workers. AU peacekeeping forces deployed in 2005 and merged with UNAMID in 2007. Rebels attacked the outskirts of Khartoum on May 10, 2008.

[Full HIU Conflict Without Borders Map](#)

Data provided by the Harvard Humanitarian Data Project
KML produced by NDI - Community Impact 11/08

Map Data: 2009 AND
7°26'14.42" N 8°53'31.68" E
Eye alt: 2935.47 km

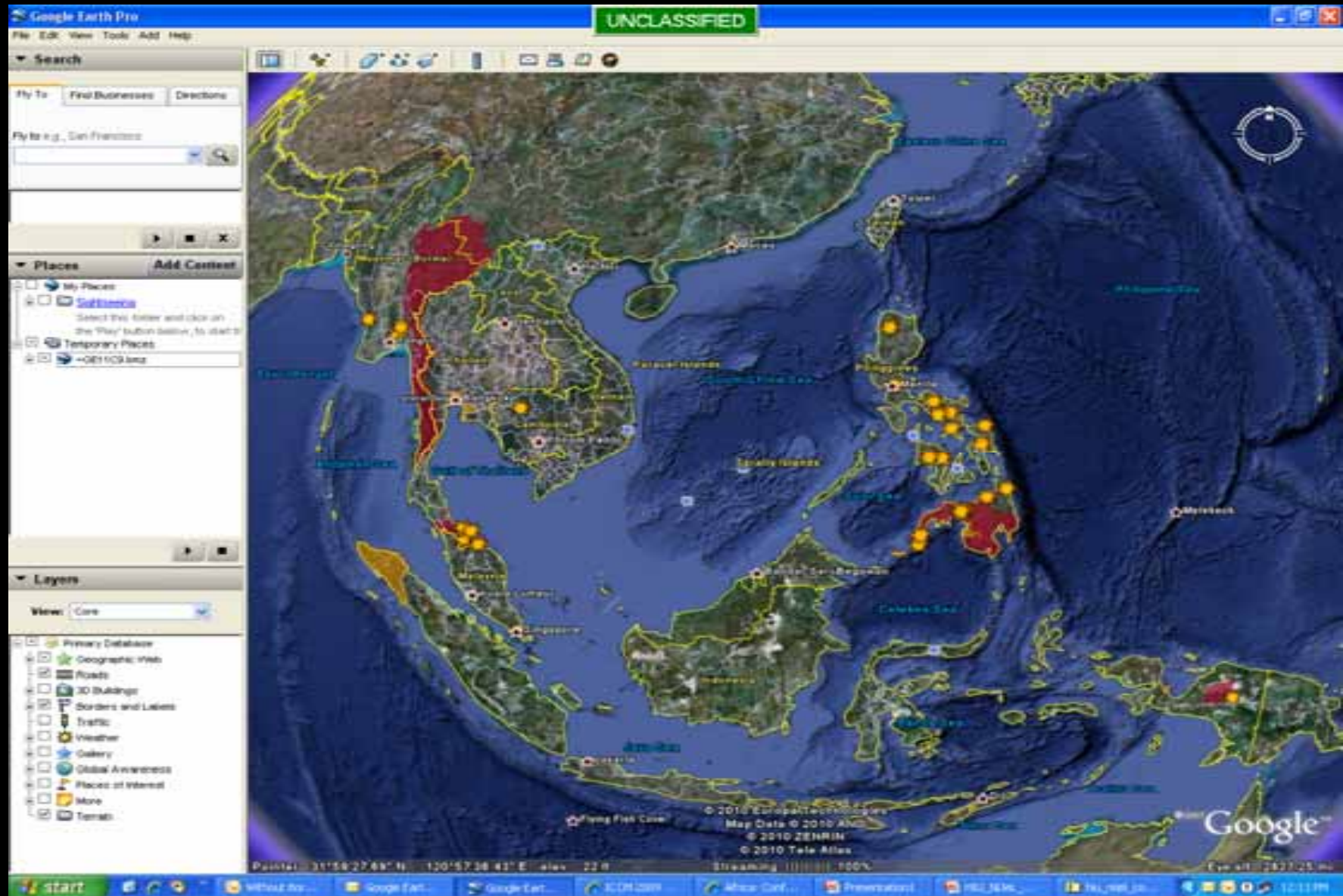
Timeline Demonstration

Unclassified

Sudan - DRC - Chad Timeline Demo

Unclassified

Southeast Asia: Conflicts Without Borders



Future Plans for Google Earth Conflict Map

- Link to spatial database for fast updating of conflict areas and attributes
- Incorporate other data layers, such as water and natural resources
- Build into a browser-based application for easier viewing by the public

State/INR/HIU collaborative relationships with UN, NGOs, academia

- UN – Office of Coordination of Humanitarian Affairs (ReliefWeb, IRIN, Humanitarian Information Centers), UNOSAT, UNHCR, WFP, FAO, etc.
- NGOs – InterAction, Information Management and Mine Action Programs (IMMAP), US Holocaust Museum Genocide Crisis in Darfur Project, NiJeL.org
- Academia – Harvard Humanitarian Initiative, Tufts University, Center for Research on the Epidemiology of Disasters (CRED)

Thank You and Questions?

- Dennis King - KingDJ2@state.gov

