

Geospatial Integration of Domestic Operations between Civilian and Military Components

Chris Diller – GIS Coordinator
Wisconsin Department of Military
Affairs

Overview

- About Wisconsin Department of Military Affairs (DMA)
- Historical Perspective
- Current Operations
- Geospatial Vision

Mission of the Wisconsin National Guard

- Provide trained units to the U.S. Army and U.S. Air Force in time of war or national emergency. The state mission is to help civil authorities protect life and property and preserve peace, order, and public safety in times of natural or human-caused emergencies.



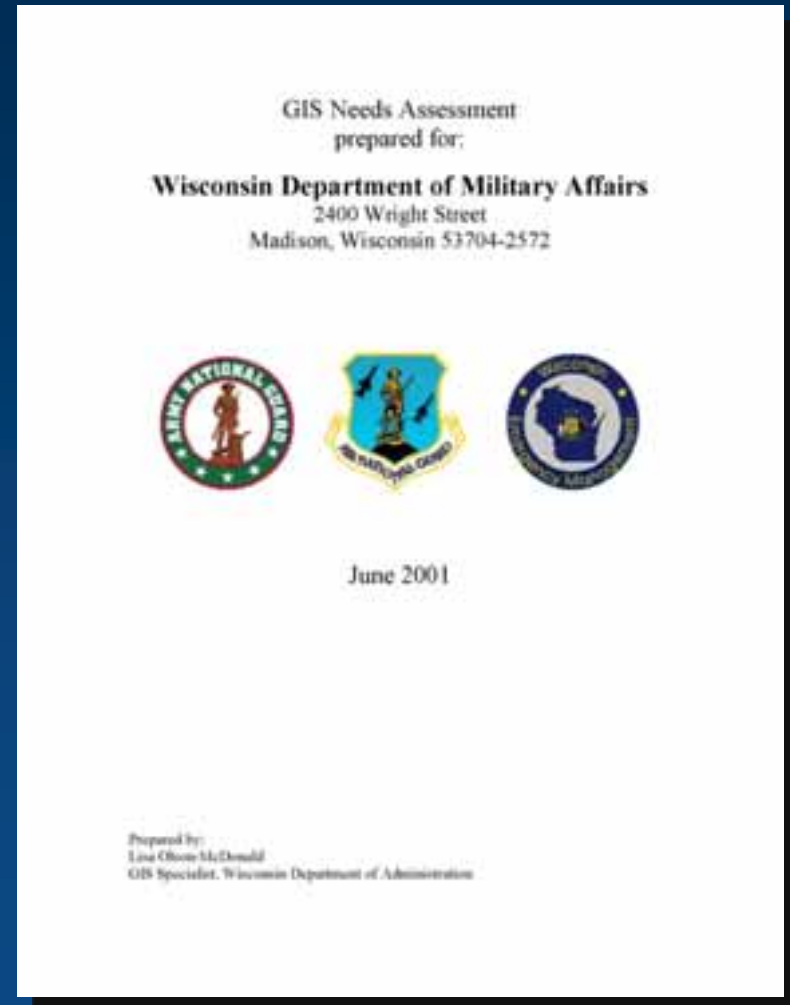
Wisconsin Emergency Management Mission

- The mission of Wisconsin Emergency Management (WEM) is to coordinate effective disaster response and recovery efforts in support of local governments. Through planning, training and exercising we prepare ourselves, our citizens and response personnel to minimize the loss of lives and property.



2001 Needs Assessment

- Main Recommendation
 - Hire a Full-time GIS Manager for the Department
 - Recommendation fulfilled in December 2003

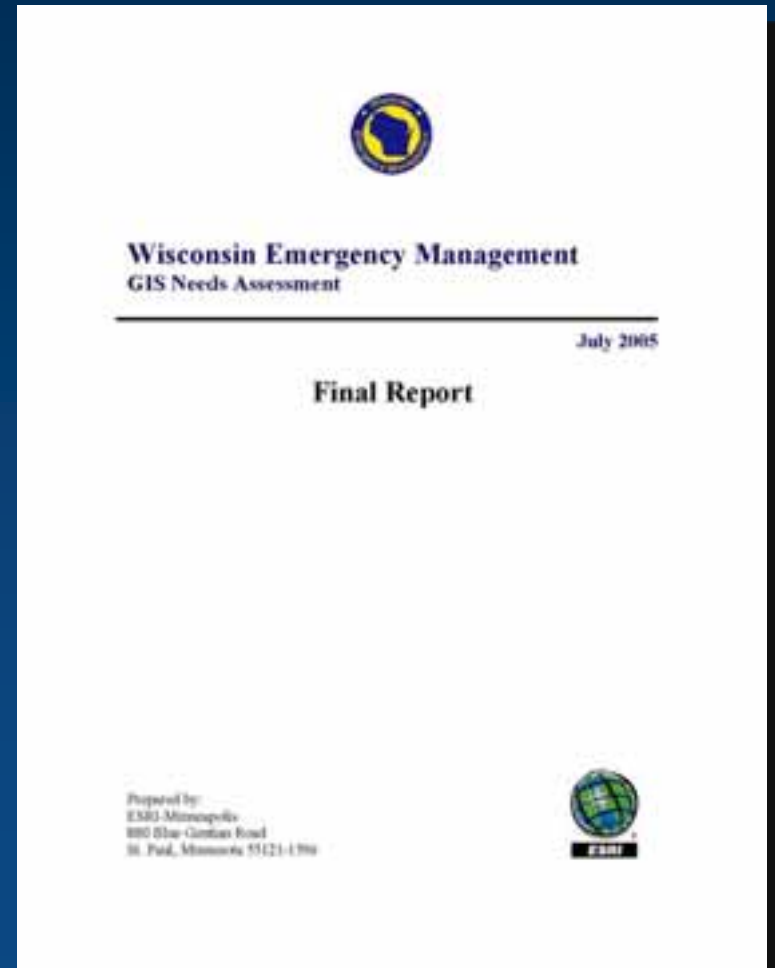


Foundational Geospatial Goals

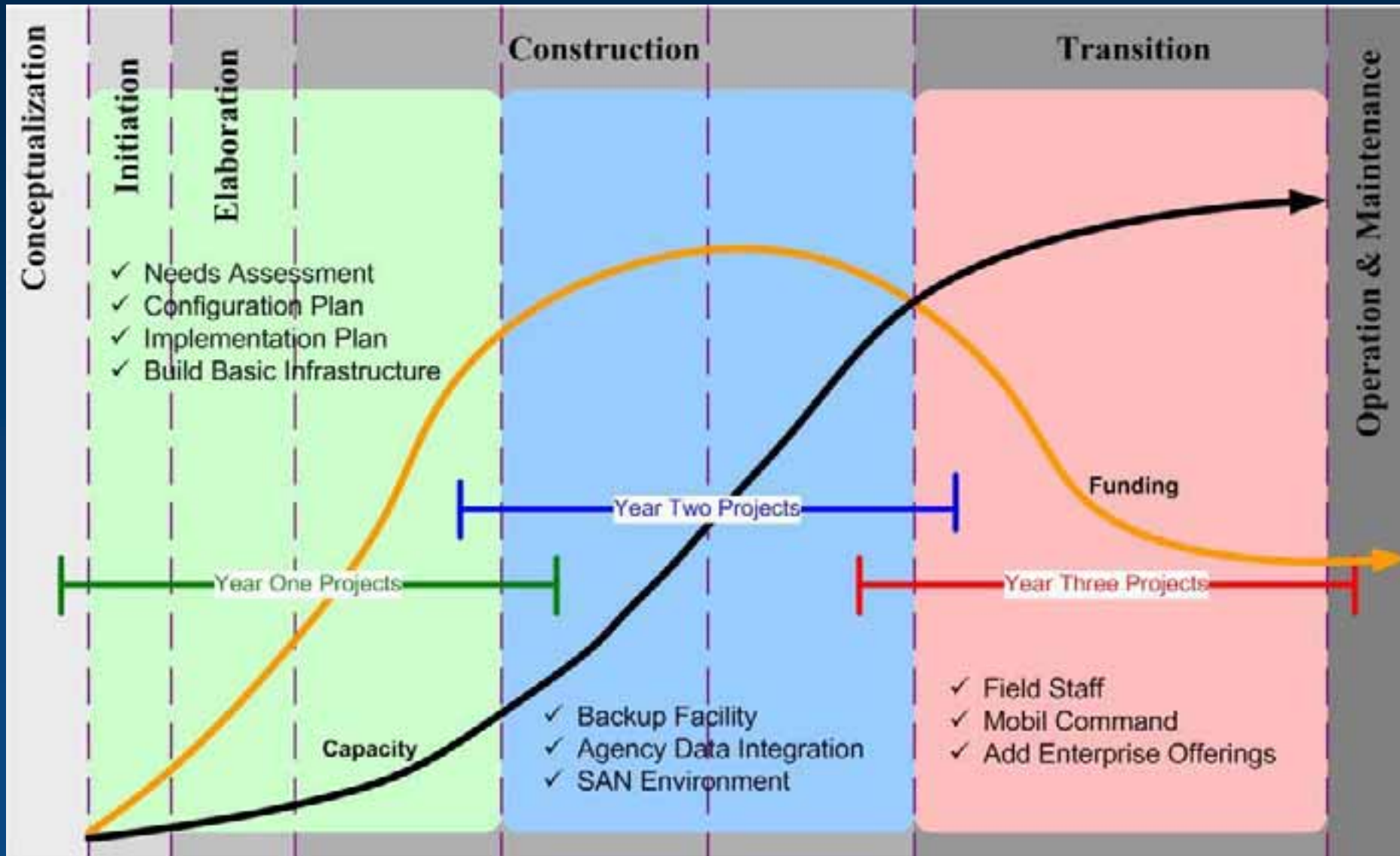
1. Develop Executive Sponsorship.
2. Develop Agency Geospatial Mission
 - The DMA GIS mission is to provide an environment for developing and managing geographic assets that encourages the use of GIS and allow it to flourish as a mainstream tool. An organized framework will be provided enabling data integration and information sharing for both spatial and non-spatial applications among all DMA directorates. This mission will align with and support the DMA primary missions of the National Guard and WEM. Additionally, the DMA GIS mission will support the GIS mission of the National Guard.

2005 Needs Assessment

- Funded by homeland security grant dollars.
- Project duration was 9 months.
- ESRI and WEM team.



Implementation Plan

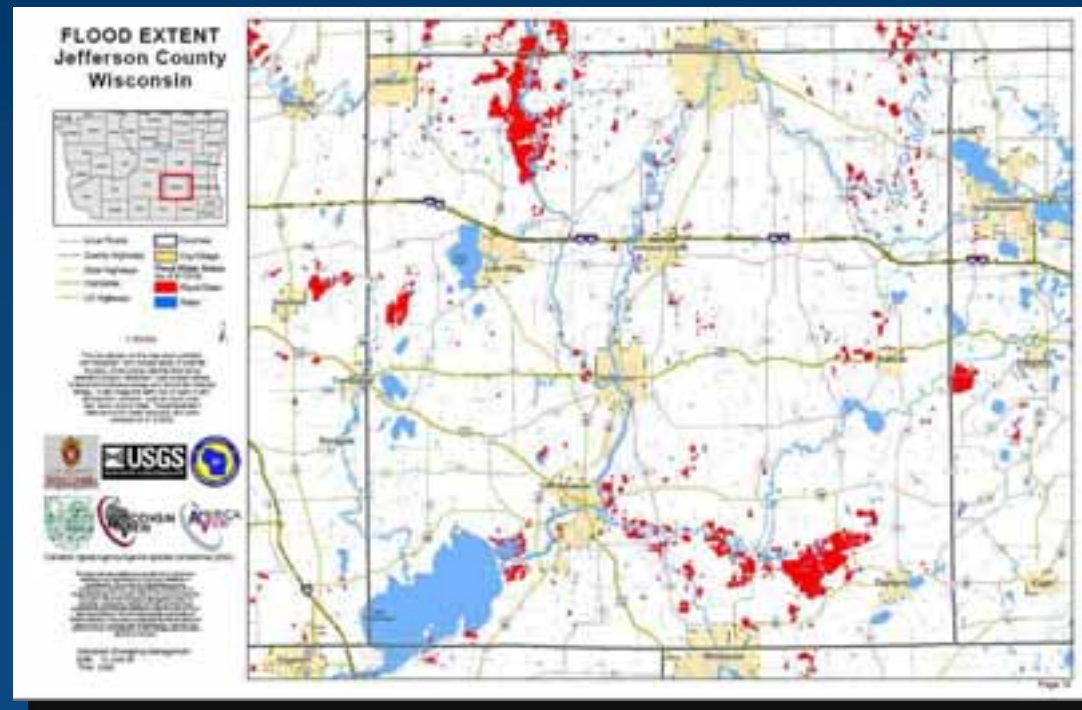
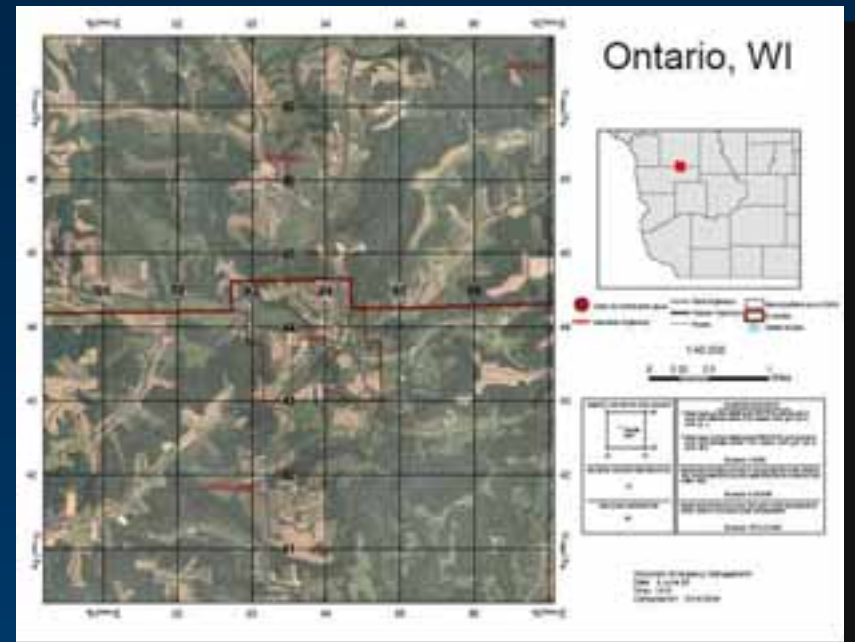


GIS Support of State EOC and WI-JOC



Mapping Profiles

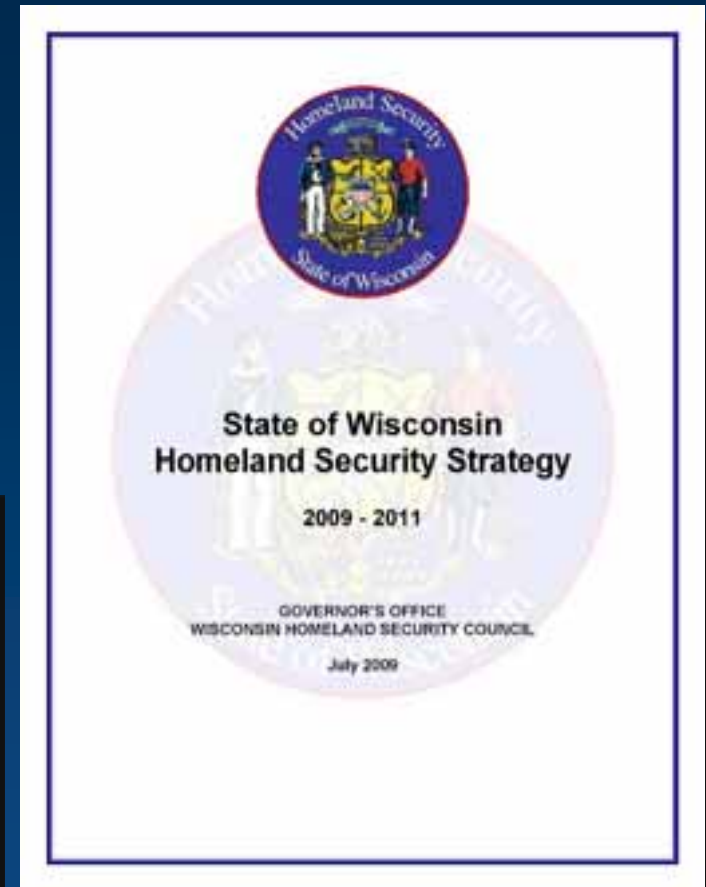
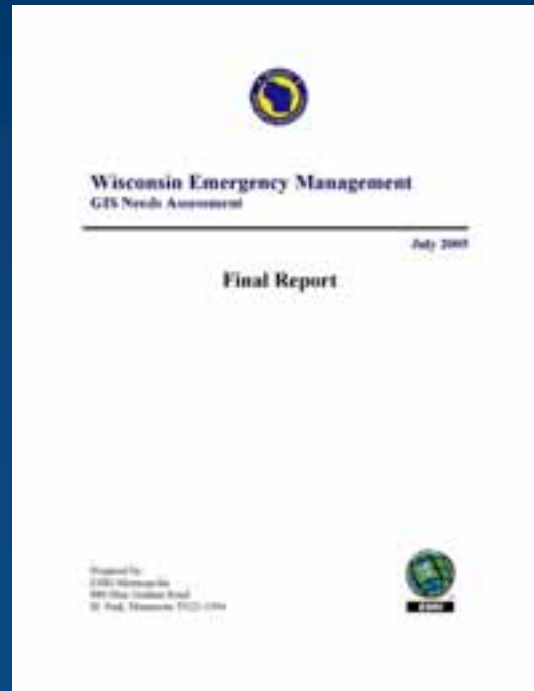
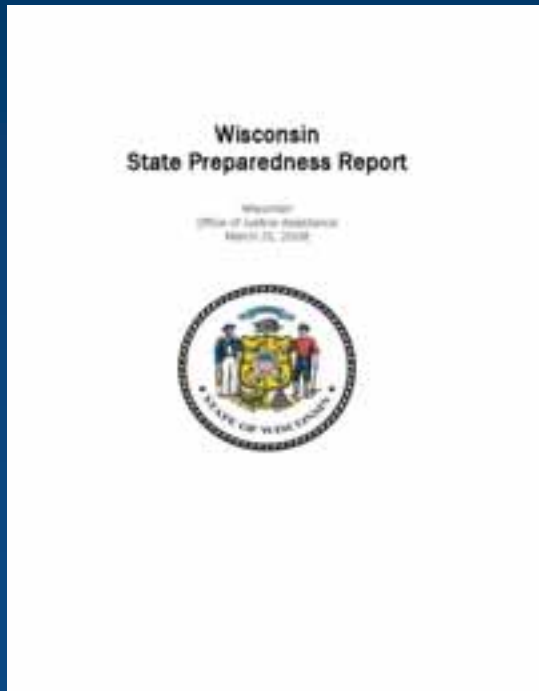
- Incident maps
- VIP Mission Maps
- Dam Status
- Shelter Status
- Target Deck
- Flood Maps



Wisconsin Homeland Security Geospatial Vision

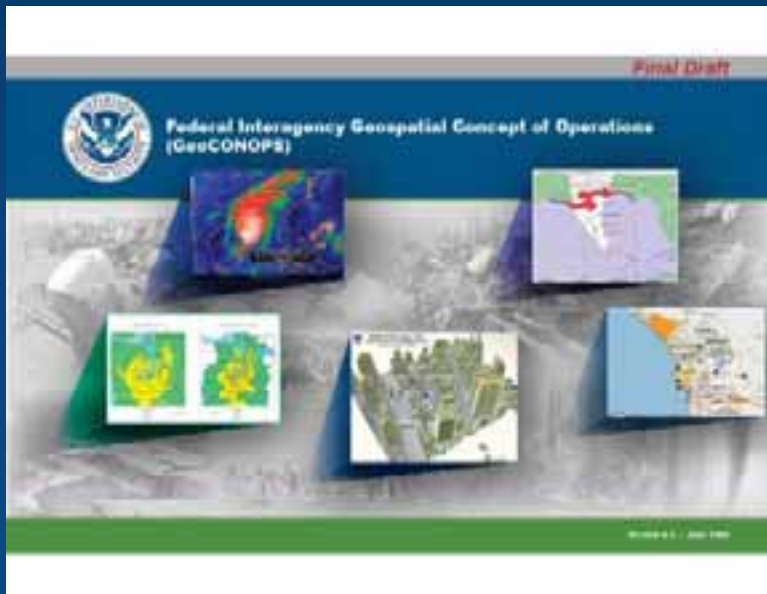
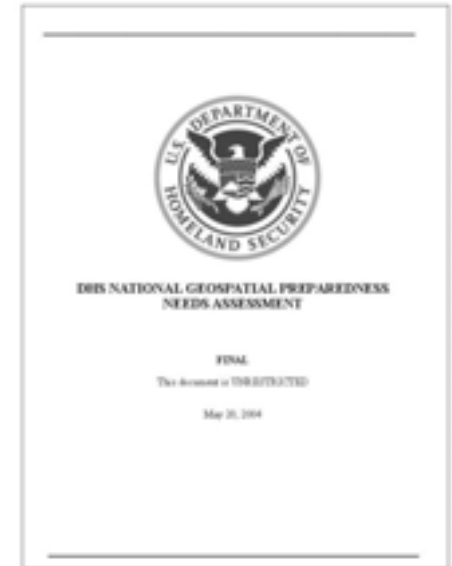
Business Drivers

- State Efforts
 - WEM GIS needs assessment (2005)
 - State Preparedness Report
 - Homeland Security Strategy



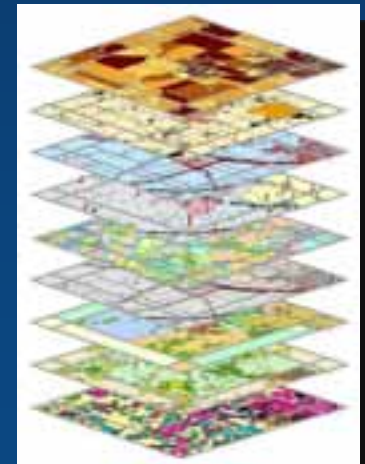
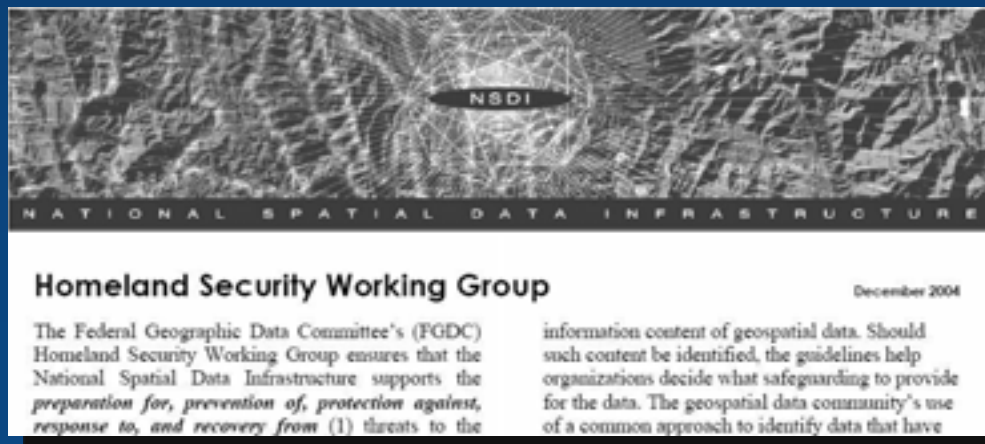
Business Drivers

- Federal Efforts
 - NSDI directive created by Presidential Executive Order (1994)
 - DHS geospatial needs assessment 2004
 - Geospatial Concept of Operations (2008 – 2013)



Wisconsin Homeland Security GIS Vision

- Create a framework called the Wisconsin Spatial Data Infrastructure (WSDI) that aligns with the efforts of the National Spatial Data Infrastructure (NSDI) where all data and supporting technical resources (hardware, software and expertise) are well organized and freely accessible to government with the purpose of supporting the mapping needs of homeland security and domestic operations.



Wisconsin Homeland Security GIS Vision

- What is the Wisconsin Spatial Data Infrastructure?
 - Partnerships
 - Clearinghouse (Catalog)
 - Metadata
 - Framework
 - Geodata
 - Standards/Policies



Wisconsin Homeland Security GIS Vision

- Goal #1: Establish a geospatial data framework:
 - Work closely with DOA/DET to develop a secure but freely accessible set of data holdings for all government entities.
 - Ensure data holdings originate from a trusted and authoritative source.
 - Ensure data is efficiently collected and maintained.
 - Work with Wisconsin partners to identify gaps in data holdings and improve completeness and currency of geospatial data holdings throughout Wisconsin.
 - Develop a plan with state and local government to ensure all Wisconsin data holdings are backed up to support all government COOP scenarios.

Wisconsin Homeland Security GIS Vision

- Goal #2: Develop a training program in Wisconsin:
 - Promote higher education efforts between GIS and emergency management/homeland security.
 - Establish a career/training program that allows for the development of specific content areas that leads to increased analytical capabilities.

Wisconsin Homeland Security GIS Vision

- Goal #3: Develop and Identify a stable funding model to support the WSDI.

Wisconsin Homeland Security GIS Vision

- Goal #4: Examine and establish a “One Policy One Map” initiative.
 - Develop consistent data sharing policies.

Wisconsin Homeland Security GIS Vision

- Achieving these goals will provide Wisconsin with the ability to:
 - More efficiently coordinate GIS resources and mapping efforts across jurisdictional boundaries.
 - Provide the foundational data to support unique application business requirements for Health, Agriculture, Justice, National Guard and many more.
 - Coordinate all domestic mapping operations through Esponder.
 - Leverage the rich geospatial holdings of Wisconsin.
 - Apply a larger and more savvy GIS workforce in support of domestic operations and public safety.

Thank you!

Chris Diller
chris.diller@wisconsin.gov