



Geospatial Governance Framework

Leveraging the DoD Business Enterprise
Architecture

David LaBranche, P.E.

ODUSD(I&E)

Business Enterprise Integration Directorate

18 February, 2010



The DoD Business Enterprise Architecture

Acquisition, Technology and Logistics

- The BEA is the enterprise architecture for the DoD Business Mission Area (BMA) and defines the DoD business transformation priorities, the business capabilities required to support those priorities, and the combinations of enterprise systems and initiatives that enable those capabilities.
- High-level architecture elements inserted in the BEA by the Defense Installations Spatial Data Infrastructure (DISDI) Program will guide and constrain the implementation of interoperable, geo-enabled defense business systems.
- BEA-compliant Component architectures and capabilities will support many operational requirements such as joint basing, by providing a federated framework for efficient, secure use of geodata and services to support the full spectrum of defense business missions.

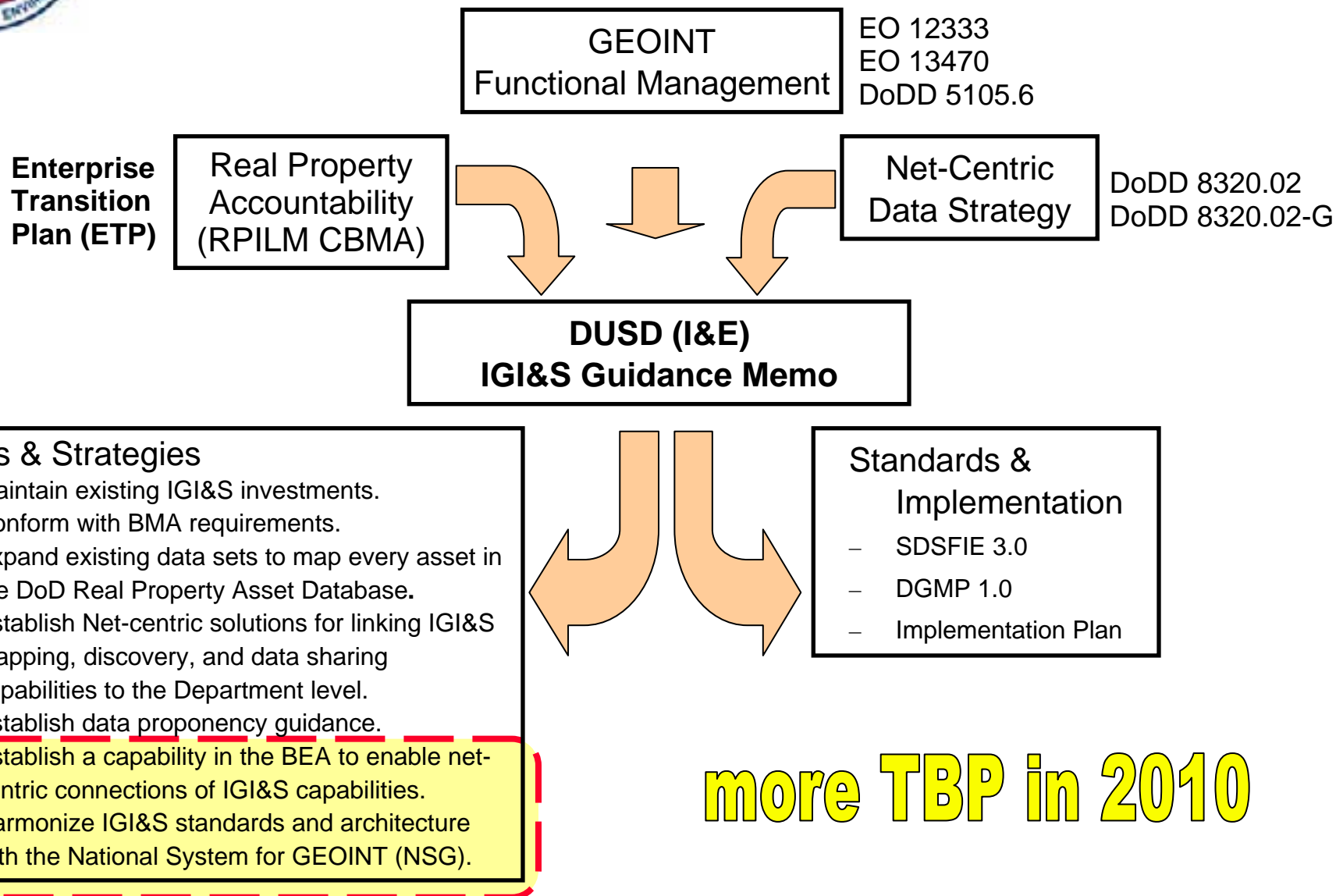


The Framework

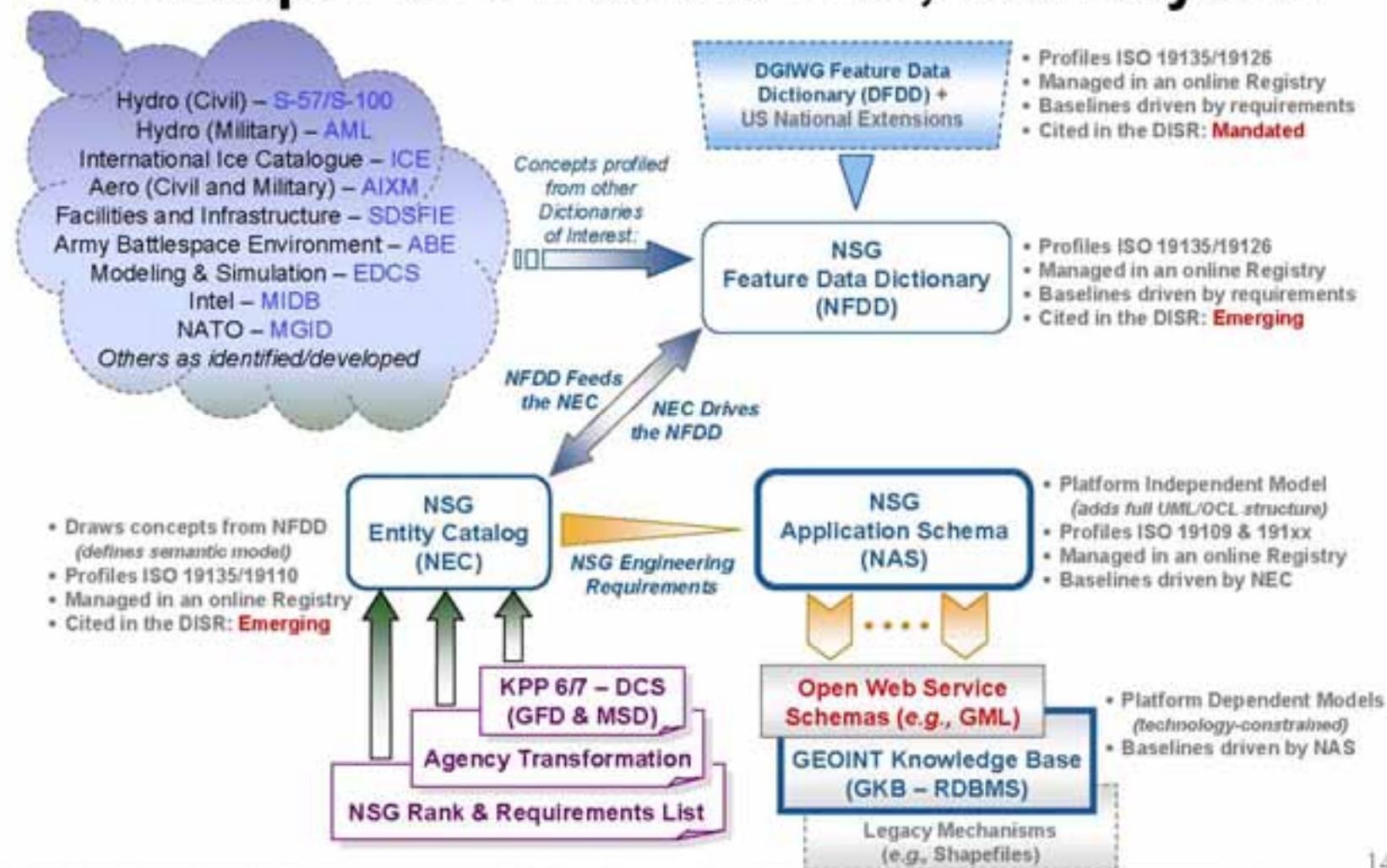


IGI&S Policy and Guidance

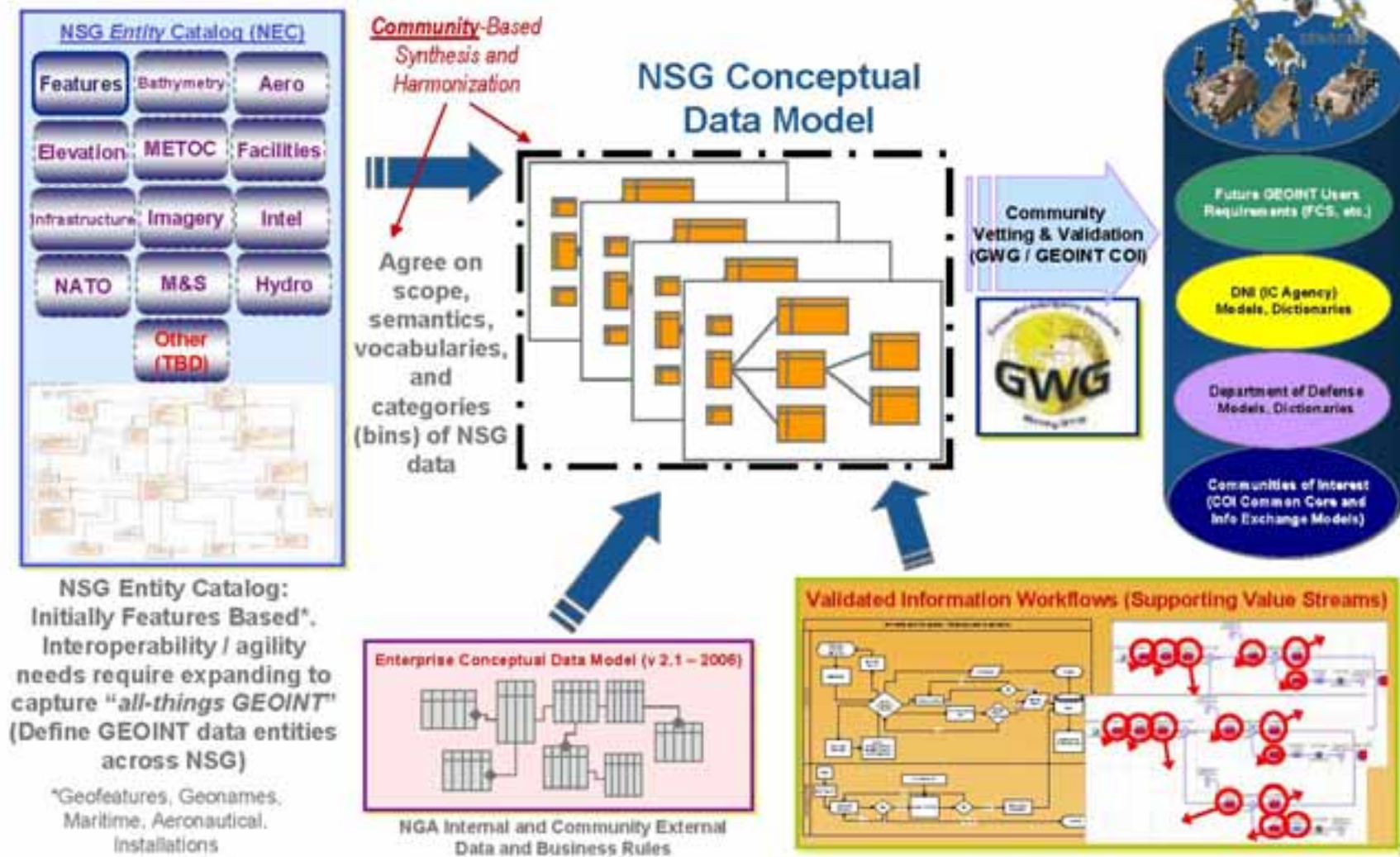
Acquisition, Technology and Logistics



► Concept Flow: Into the NEC, and Beyond



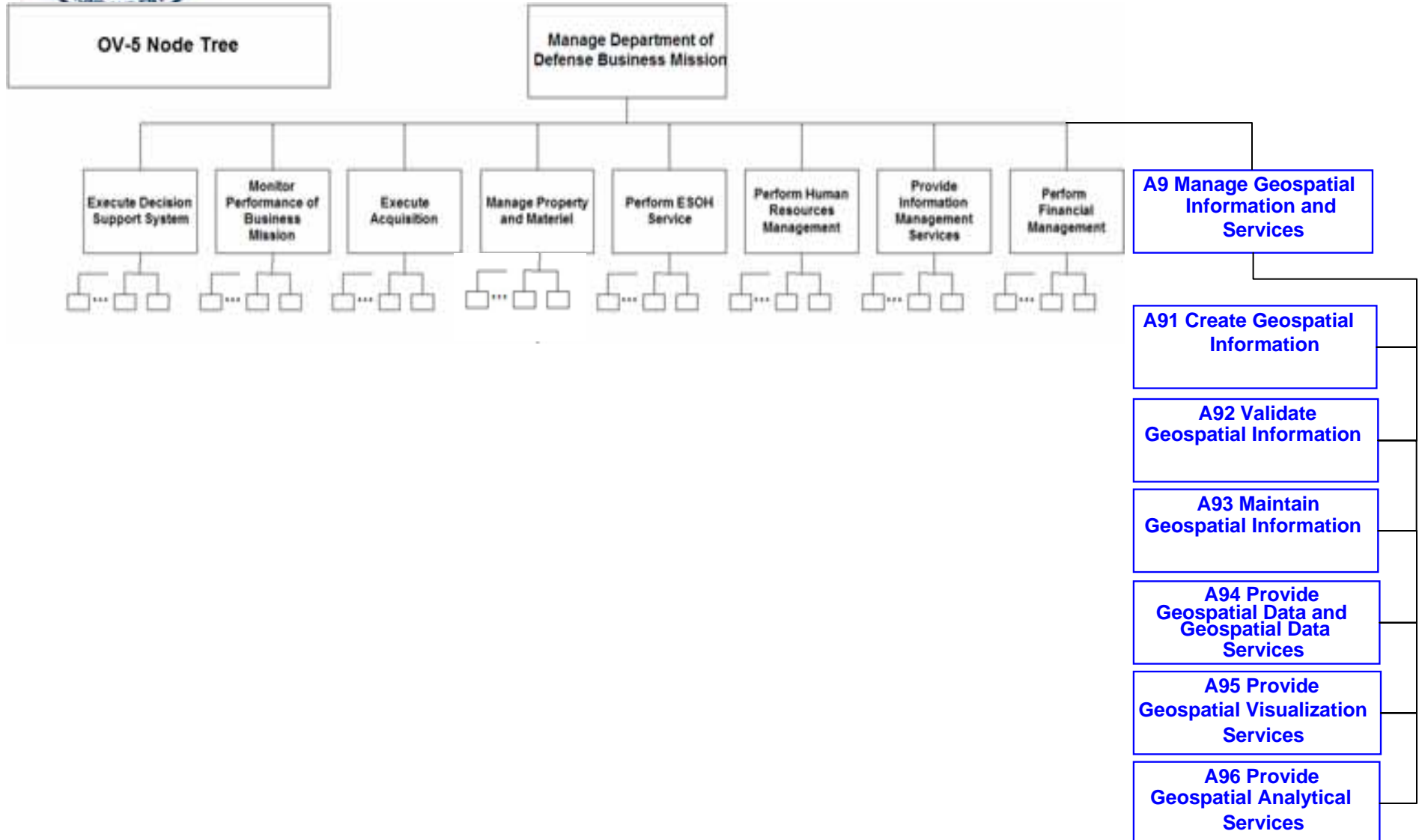
► Harmonization: Building NSG Conceptual Model





BEA 7.0 GI&S Node

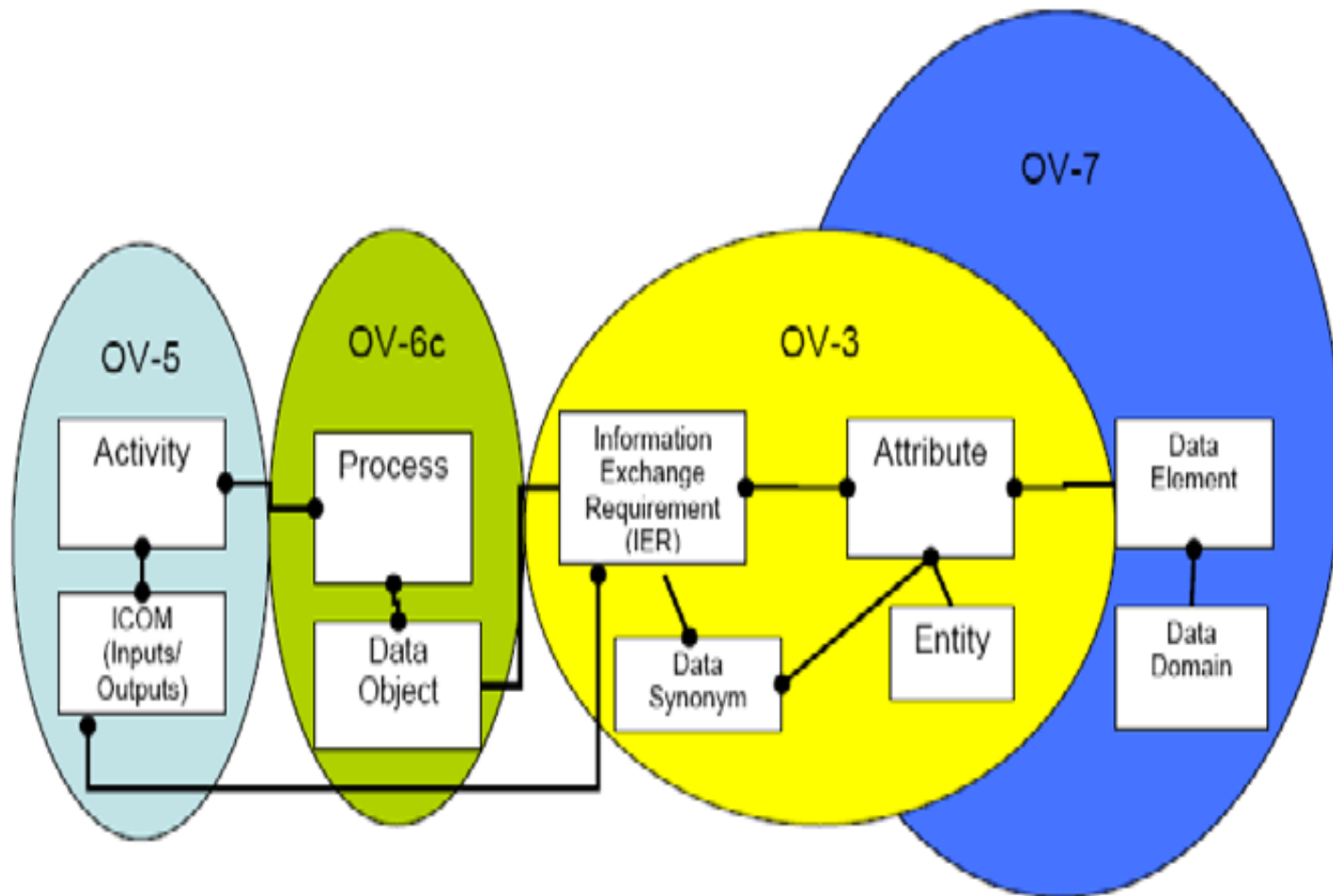
Acquisition, Technology and Logistics





Relationship between BEA products

Acquisition, Technology and Logistics



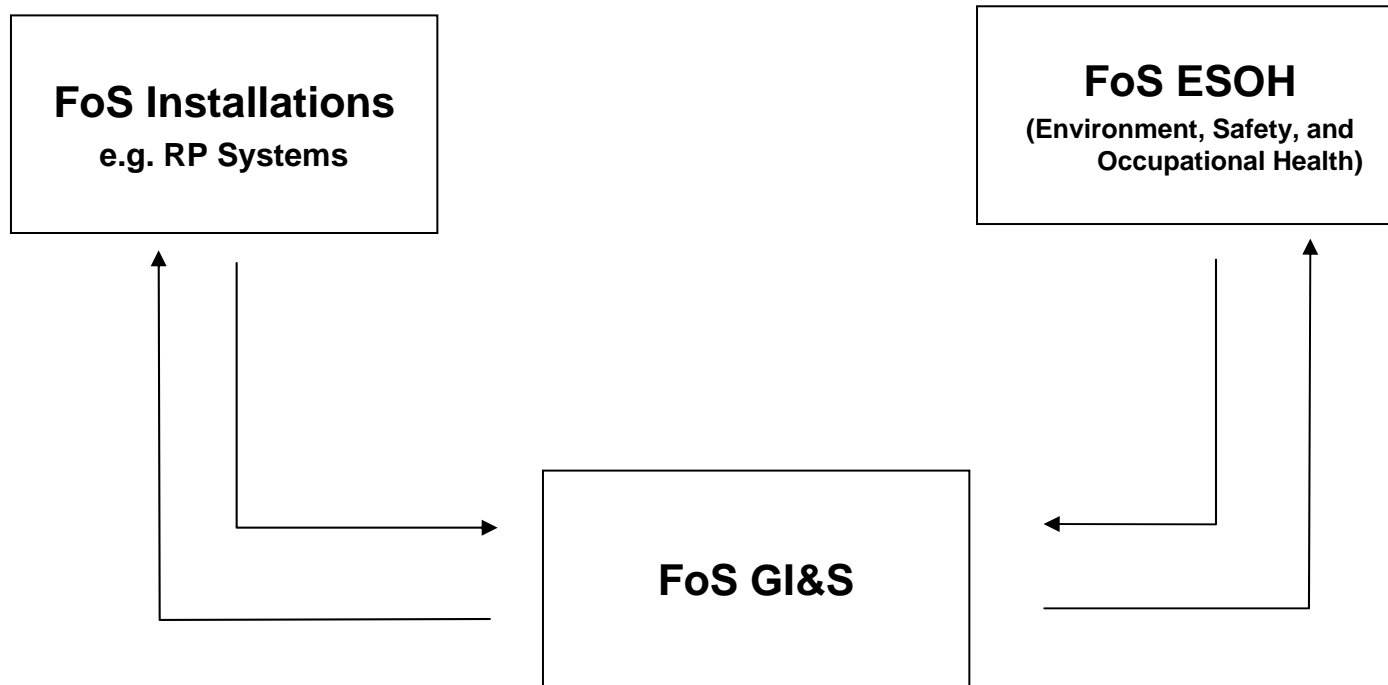
Source: BTA – Architecture Product Guide



Family of Systems GI&S

Acquisition, Technology and Logistics

- BEA Term that combines DoD geospatial information and services (GI&S) capabilities

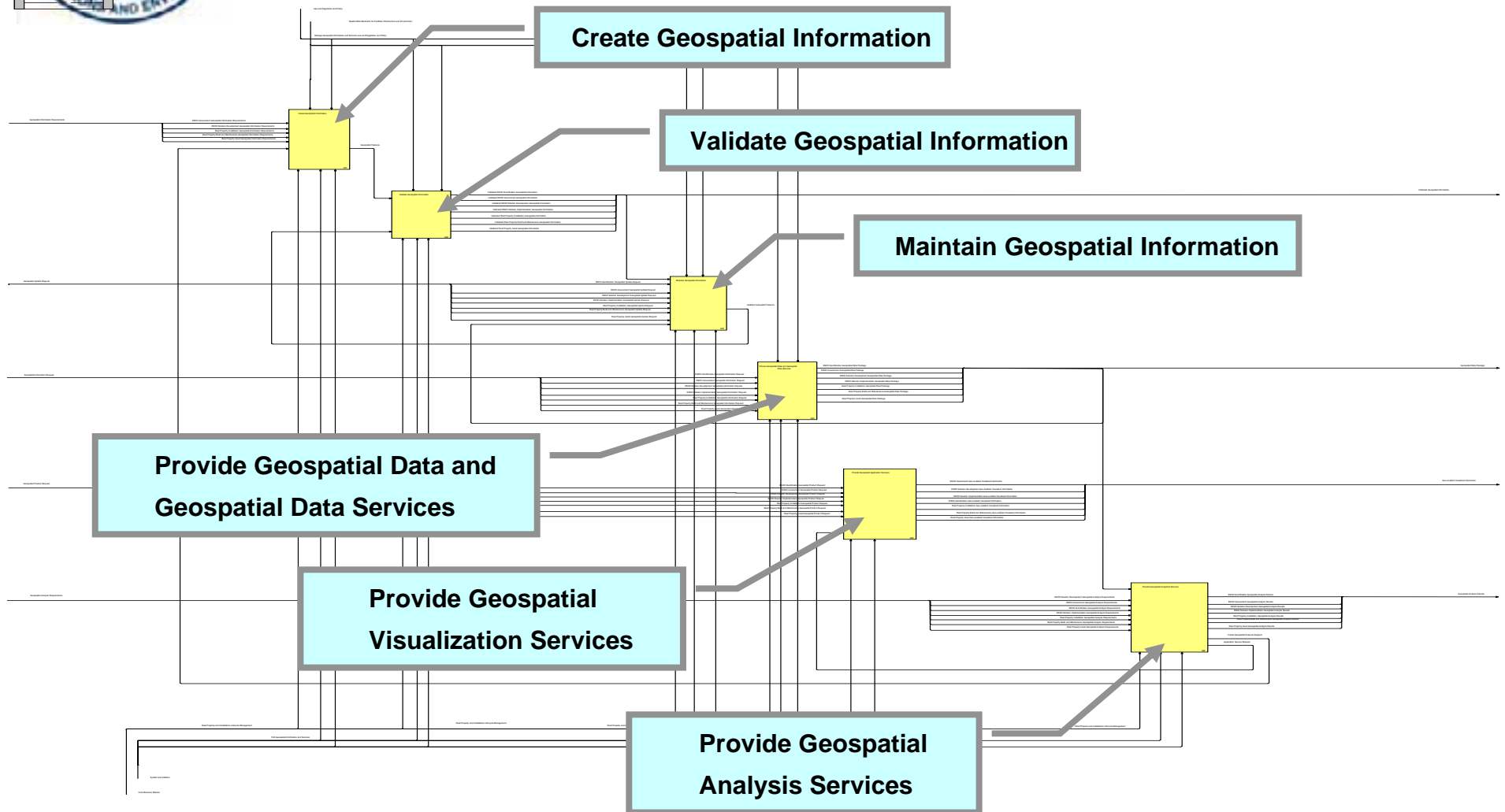




Manage Geospatial Information and Services

OV-5 Activity Model

Acquisition, Technology and Logistics





Implementation: making use of The Framework



System Review and Portfolio Management

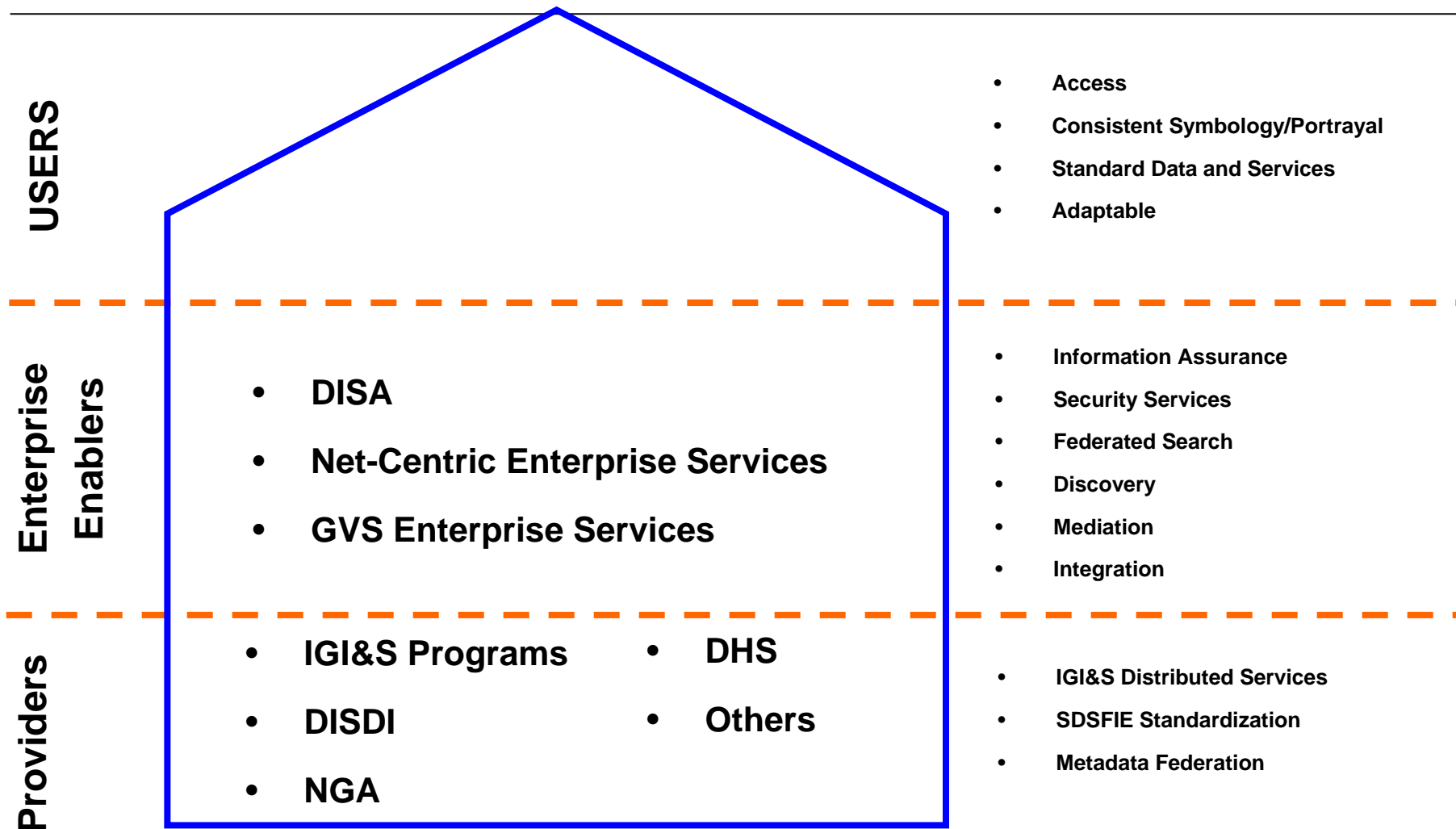
Acquisition, Technology and Logistics

- Investment Review Board
- IGI&S Family of Systems - Special Interest
- BEA compliance
- Standards (ISO, OGC, NSG, SDSFIE, etc.)
- DoDD 8320.02 Net-Centric Implementation:
 - Understandability, Accessibility, Availability
- The key question of the GI&S functional review: *Are the fundamental concepts of “location” implemented correctly?*



A Draft CONOPS for DISDI

Acquisition, Technology and Logistics





A Draft CONOPS for DISDI (2 of 2)

Acquisition, Technology and Logistics

Enterprise Content Delivery Network

Requirements

User Access

Communities of Interest

Service Oriented Architecture Framework

Enterprise Service Bus



DoD Discovery Catalog, DoD Metadata Registry, DoD Service Registry

NEW: Geospatial Visualization Enterprise Services (TBP)

DISDI

Component
G&S

DoD Agencies

Other Federal
Agencies

Homeland
Defense



BEA Future Focus for IGI&S Community

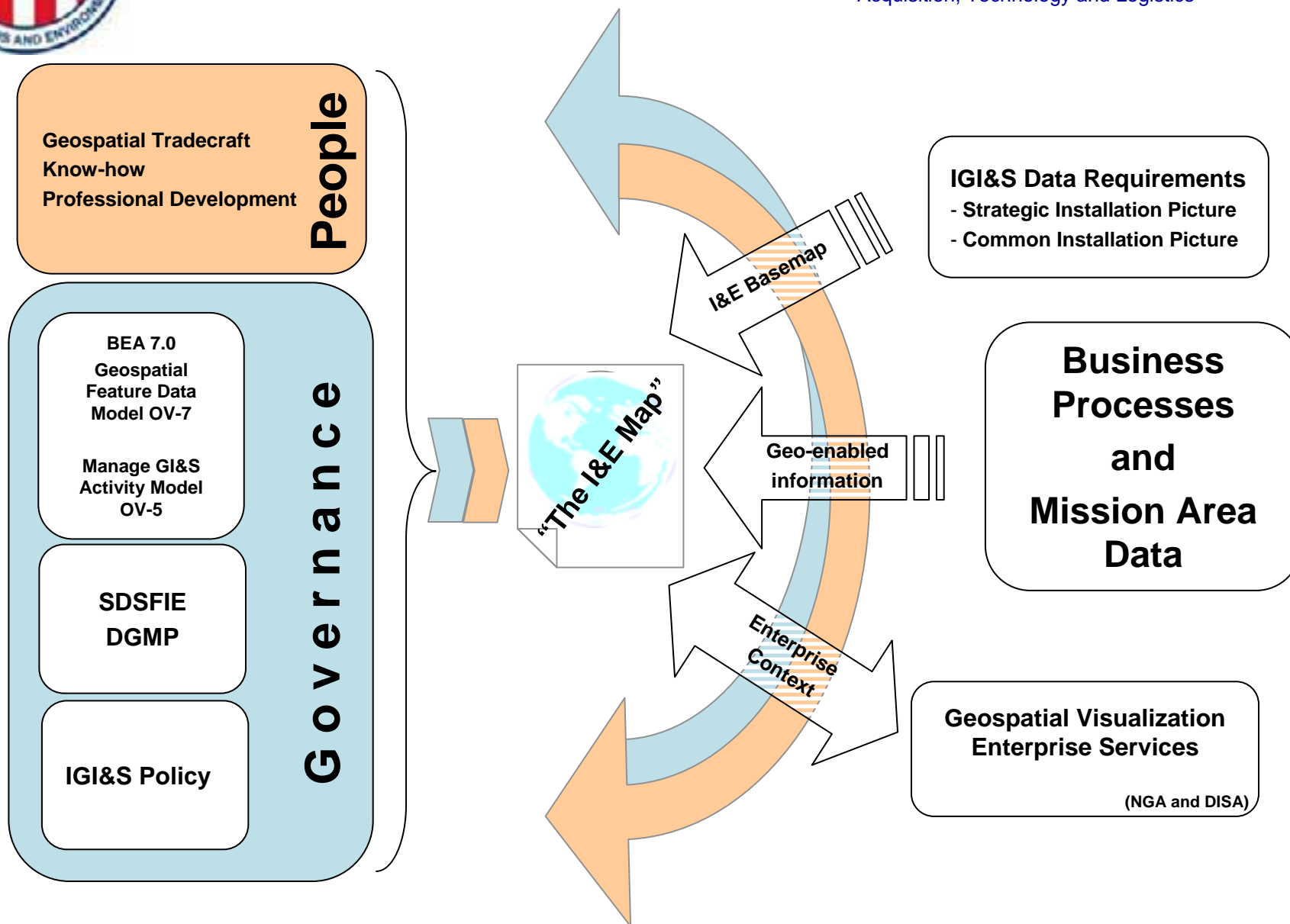
Acquisition, Technology and Logistics

- Shift from “architecting” to implementing BEA blueprint
 - Reviews of systems – BEA alignment
 - Probable addition of all GIS-capable systems as “special interest” systems under RPILM IRB
- Further decomposition of the OV-5 activities will have implementation benefits:
 - Define components of portfolio management
 - Target for IRB system reviews, capabilities development
 - Define “The Map” and IGI&S products (generic)



SDI: How to Geo-enable the Enterprise

Acquisition, Technology and Logistics





Questions?



GEO READINESS



Web site and DISDI Portal: www.acq.osd.mil/ie/bei/disdi.htm

Mr. David LaBranche, P.E.
Program Manager
Defense Installation Spatial Data Infrastructure (DISDI)

Office of the Deputy Undersecretary of Defense for Installations &
Environment, Business Enterprise Integration Directorate
ODUSD(I&E) BEI

E-mail: disdi.helpdesk@osd.mil