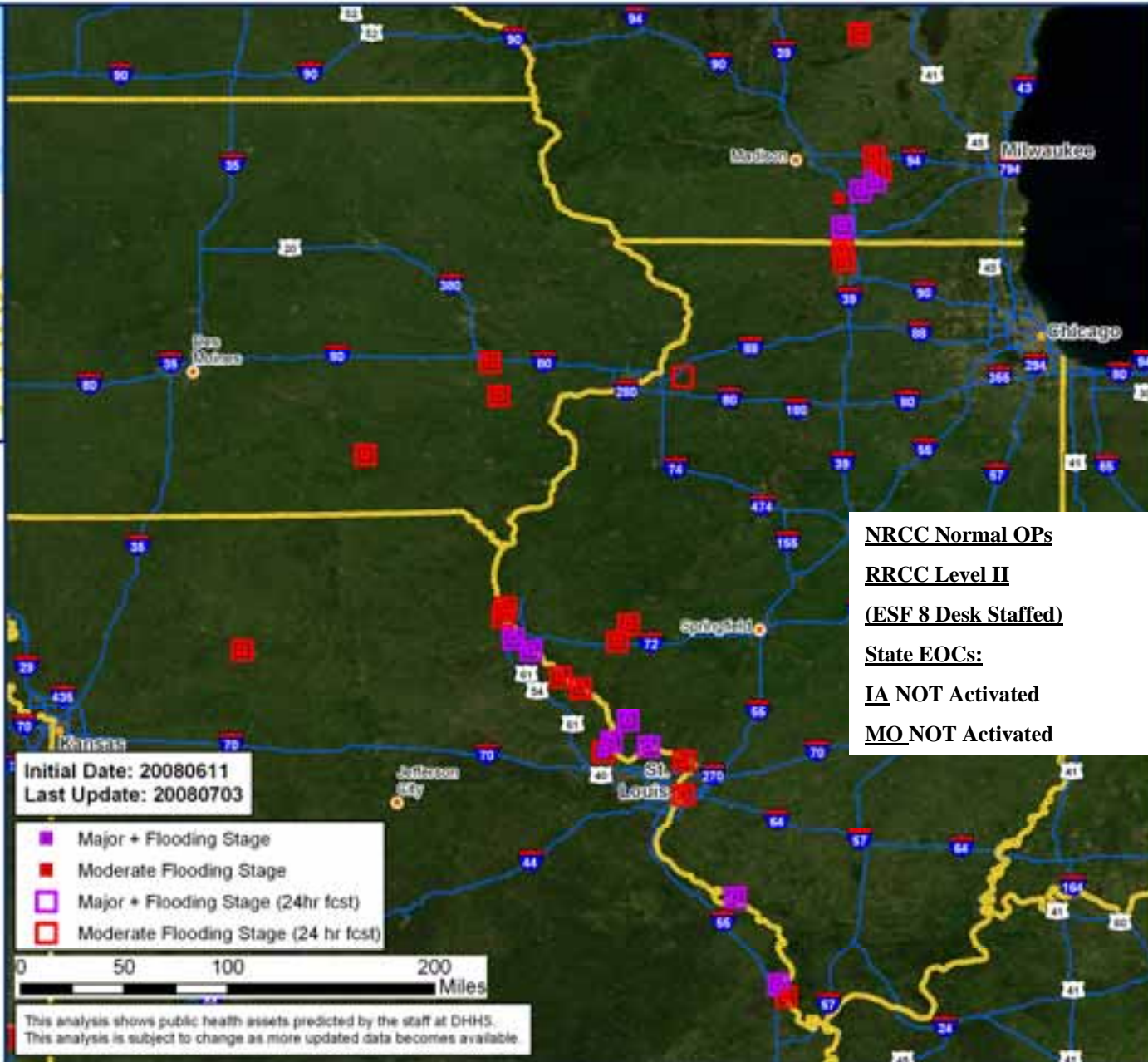
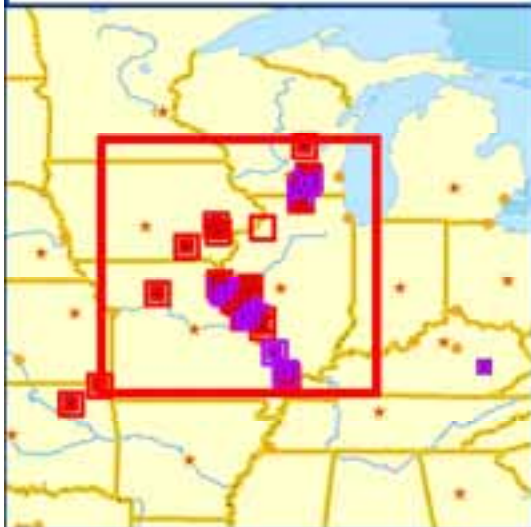






# HHS - ESF 6/8 - R5&7 - Phase 1-Awareness Severe Weather - River Gauge Levels

GEOSPATIAL PUBLIC HEALTH PREPAREDNESS PROGRAM - U.S. DEPARTMENT OF HEALTH & HUMAN SERVICES



## R7 11Jul08 1415EDT:

- IA: Fatalities **17**; injured **106**
  - IA: 5 shelters with 167 occupants
  - IA: IAs and PAs complete
  - MO: 2 shelters with 24 occupants
  - MA rec'd to deploy HHS Liaison to JFO
- (R7 REC, FEMA)**

NRCC Normal OPs

RRCC Level II

(ESF 8 Desk Staffed)

State EOCs:

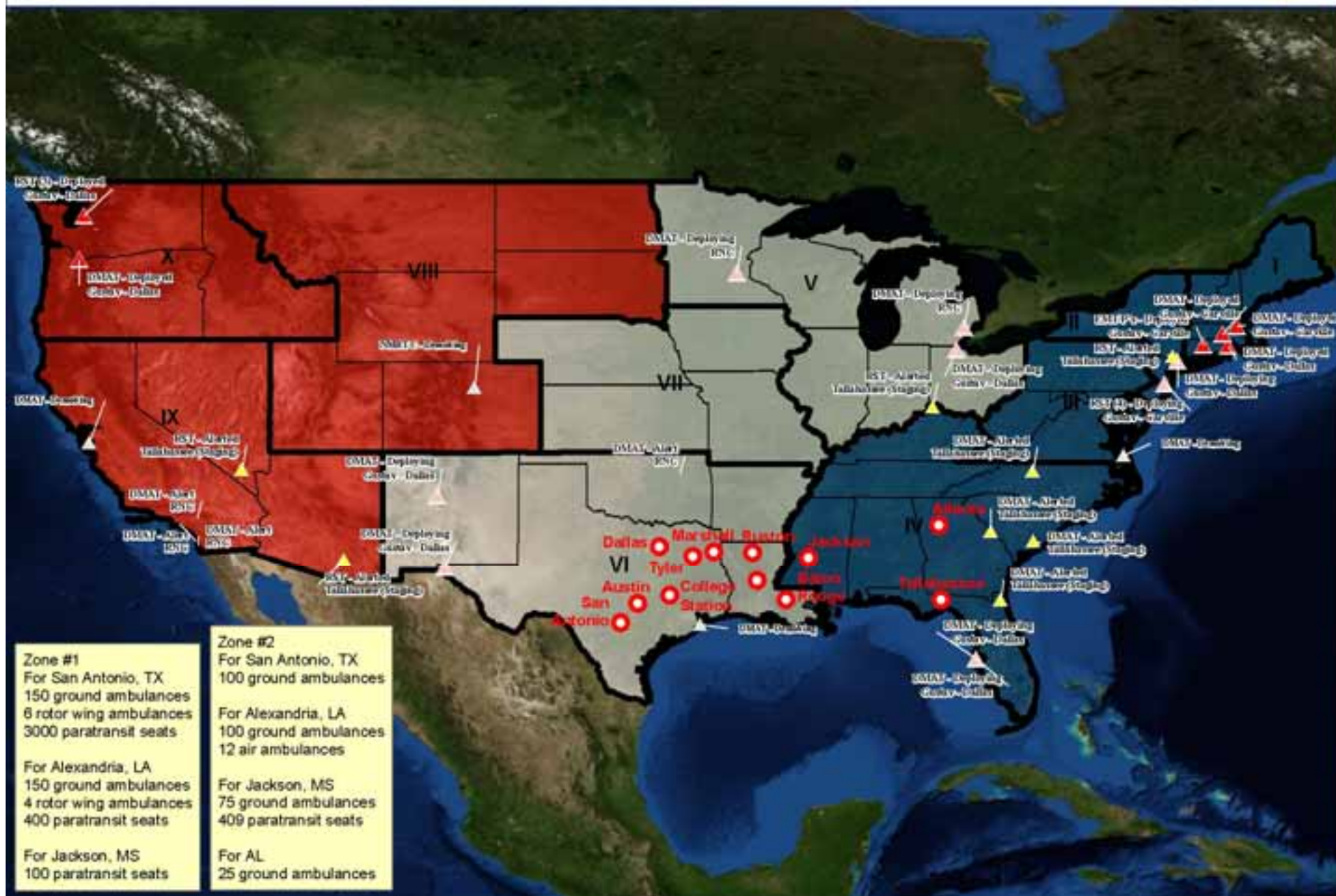
IA NOT Activated

MO NOT Activated





GEOSPATIAL PUBLIC HEALTH PREPAREDNESS PROGRAM • U.S. DEPARTMENT OF HEALTH & HUMAN SERVICES

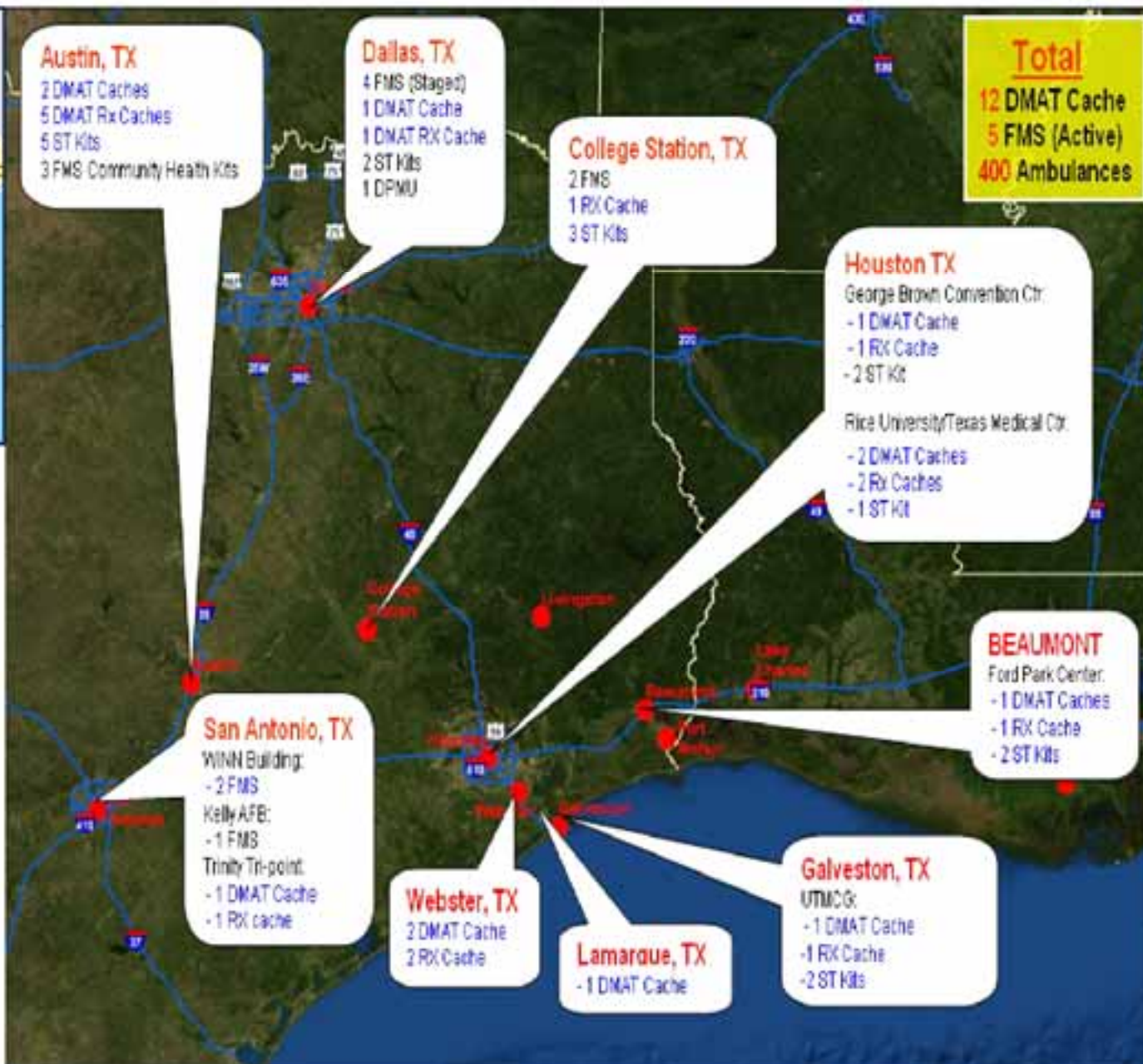






## HHS - ESF 6/8 - Reg 6 - Phase 2 - Concern HURRICANE IKE - Equipment Assets

GEOSPATIAL PUBLIC HEALTH PREPAREDNESS PROGRAM - U.S. DEPARTMENT OF HEALTH & HUMAN SERVICES



### 21Sep08 1530EDT:

- No longer a tropical system
  - Remnants of Ike brought heavy rainfall and winds in R5
  - Response and recovery ongoing in R6
  - TX EOC at Level I
- (NOAA, FEMA)





## HHS - ESF 6/8 - Reg 6 - Phase 2 - Concern HURRICANE IKE - GULF OF MEXICO



GEOSPATIAL PUBLIC HEALTH PREPAREDNESS PROGRAM - U.S. DEPARTMENT OF HEALTH & HUMAN SERVICES



### 12Sep08 1100EDT:

- 165 Miles SE of Galveston, TX  
270 E of Corpus Christi moving  
WNW 12 MPH
- Category 2 Hurricane
- Sustained winds at 105 mph
- Expected to strengthen by Sat  
AM
- TX, FL, and LA Governors  
declared State of Emergency
- HHS Sec declared PHE for TX  
(NOAA, FEMA)

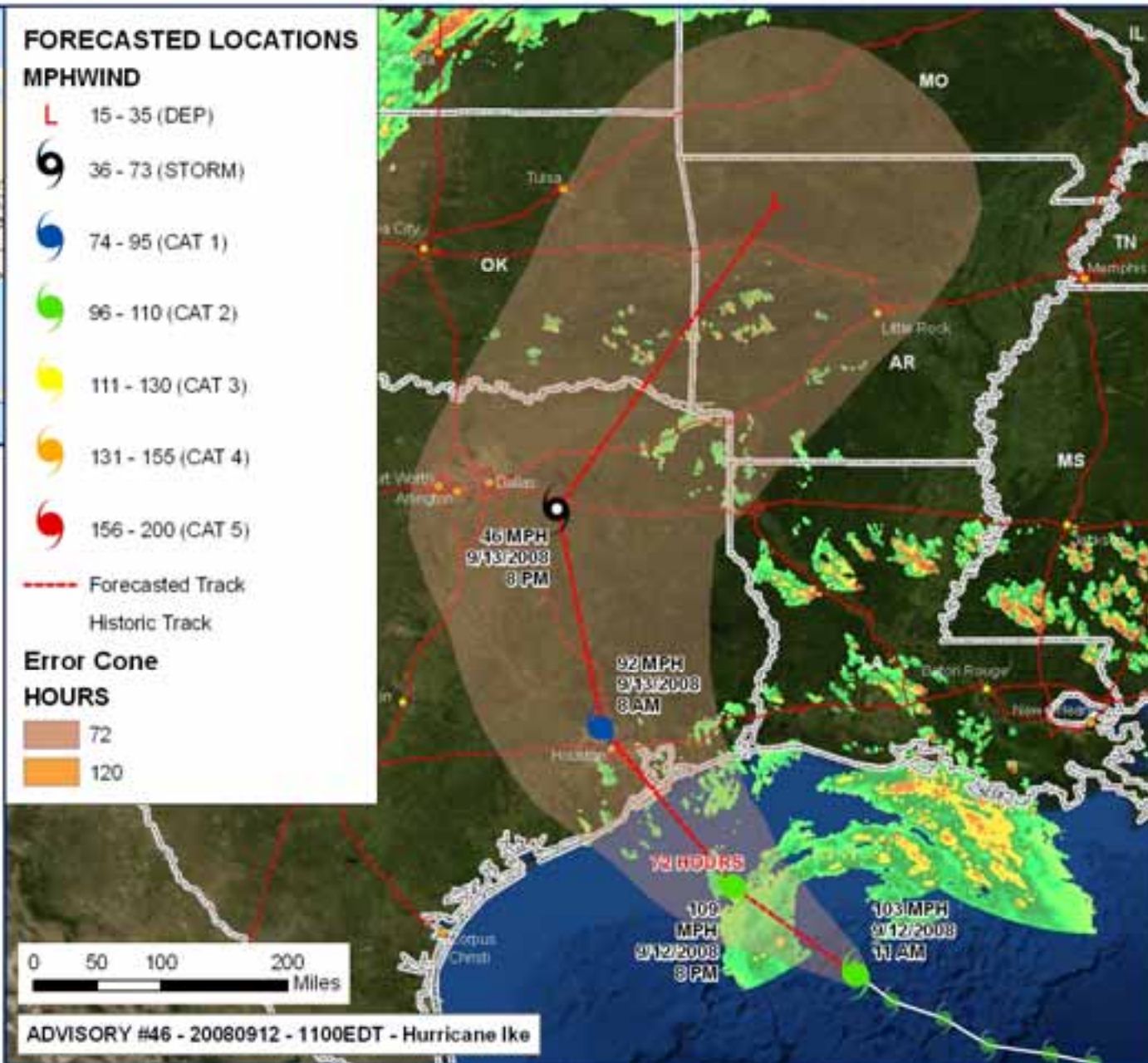
### FORECASTED LOCATIONS MPHWIND

- L 15 - 35 (DEP)
- 36 - 73 (STORM)
- 74 - 95 (CAT 1)
- 96 - 110 (CAT 2)
- 111 - 130 (CAT 3)
- 131 - 155 (CAT 4)
- 156 - 200 (CAT 5)

--- Forecasted Track  
--- Historic Track

### Error Cone HOURS

- 72
- 120



# Strategic Objectives for MedMap

- Inform and Empower HHS and ESF#8 support staff
- Increase situational awareness by creating a platform that consumes real-time data
- Enable planning and post incident planning
- Facilitate global partnerships



# MedMap Mission

- Web based, no download required
- Visualization of fixed and mobile assets (i.e hospitals, nursing homes, CI/KR, teams and caches)
- Increased situational awareness
- Ability to plan for events (“What If?”)
- Query data elements for specific values
- Custom tools for display and queries
- COP to share with ESF 8 partners



# History

- From January through June of 2009
  - General Mapping
    - Secure log-in page to the MedMap web-based application
  - Data
    - Access the GIS database at HHS HQ
    - Data downloaded and used based on events
    - HHS data secure behind firewall and not shared/accessed by outside
    - Data layers loaded based on user assigned group
    - View events of interest generated by SOC GIS staff



# MedMap Statistics

- From prototype to implementation in less than 6 months
- 196 user accounts (growing)
- 480+ data layers in 70+ layer groups
- Streaming and daily downloads (inc. NOAA, USGS)
- Used for recent responses and has become COP for ASPR and CDC
- Working on data sharing projects with other departments



# MedMap Integration

- Used in daily operation of the Secretary's Operation Center of HHS as well as during deployments
- Has become an integral part of the HHS response and reporting mechanism
- Has empowered staff to do minor spatial requests

MedMap - Mozilla Firefox

File Edit View History Bookmarks Tools Help

https://medmap.hhs.gov/medmap/MedMapServ.html?tok=19aEwJUT-efK9Z1F622y096Yy/21122h9dMMDRvP3q5BK51d629BCFD/NBC\_1803Rc

Most Visited | SRPUS Player - 100% | Pandora Radio - Live... | My Yahoo! | Gmail - Inbox - robsh... | LinkedIn: Home | ISI WebMail | Latest Headlines | HHS MedMap Login

**MedMap** @HHS.gov

Load/Save View Load Collection Add ShapeLine Spatial Query Search Text Directions Playback

Status: Updated visible layers. Done

Sat Attrb. Help

**MedMap Home**

Enter address to look up:

Find

Display Manager

**Layer Attributes**

Click on layer item on map to identify its attributes.

**Regions**

Select Region

**Layer Collections**

- ☒ HHS\_Billants
- ☒ HSP\_Boundaries
- ☒ HSP\_EmergencyServ
- ☒ HSP\_PubHealth
- ☒ HSP\_Geonames

**External Layer Collections**

**Shape & KML Overlays**

- ☒ User-drawn
- ☒ Query
- ☒ KML

Map Satellite Hybrid Terrain

Map data ©2006 LeadDog Consulting, Tele Atlas, GEBCO, Europa Technologies, Terra



MedMap - Mozilla Firefox

File Edit View History Bookmarks Tools Help

https://medmap.hhs.gov/medmap/MedMapServ.html?tok=194E7WU7-ef039Z1F622y096Yf21128Hq#M=3P0P3dK51d0z9BC0D/HVC\_180D3K

Most Visited SPURUS Player - 100% Pandora Radio - Live My Yahoo! Gmail - Inbox - robsh... LinkedIn: Home ISI WebMail Latest Headlines HHS MedMap Login

**MedMap** @HHS.gov

Load/Save View Load Collection Add ShapeLine Spatial Query Search Text Directions Playback

Status

Sat Anim. Help

**Load Collection**

Load Layer Collection from drop-down list

Layer Collection to Load

Group 1 Group 2 Group 3

Load from URL

Add KML File

Enter complete URL of the KML file as shown one from the list

Choose KML File

Refresh KML File

Clear KML File

Exit Collection

Map Satellite Hybrid Terrain

HHS\_ADAMS  
HHS\_HAVBED  
HHS\_Highways  
HHS\_Rivers  
HHS\_Assets  
HSP\_Agriculture  
HSP\_Borders  
HSP\_Chemicals  
HSP\_Commercial  
HSP\_MailShipping  
HSP\_Manufacturing  
HSP\_Mining

Select Region

Layer Collections

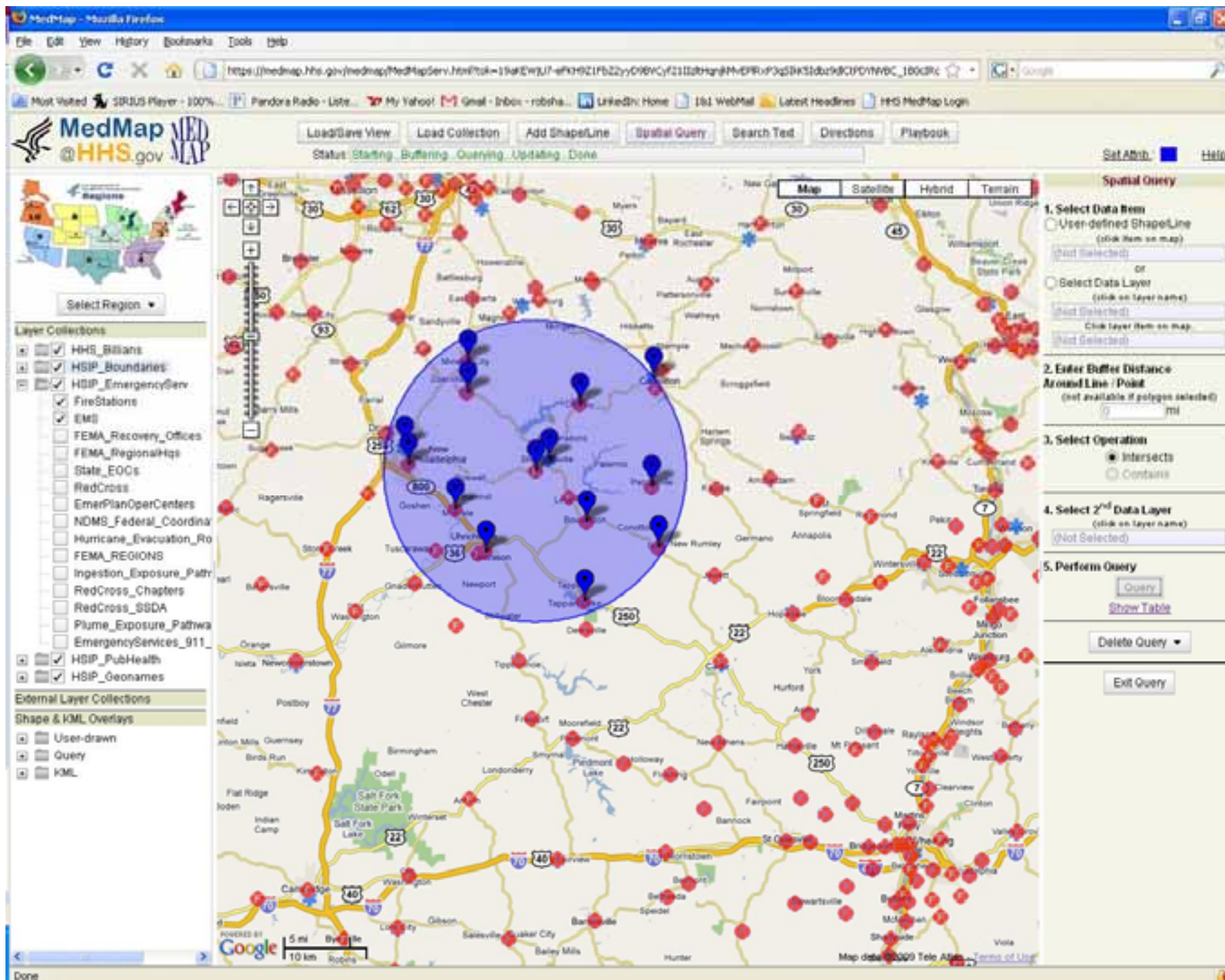
☒ HHS\_Billants  
☒ HSP\_Boundaries  
☒ HSP\_EmergencyServ  
☒ HSP\_PubHealth  
☒ HSP\_Geonames

External Layer Collections

Shape & KML Overlays

☒ User-drawn  
☒ Query  
☒ KML

Map info ©2006 LeadDog Consulting, Inc. All Rights Reserved. Map data ©2006 LeadDog Consulting, Inc. All Rights Reserved. Map data ©2006 LeadDog Consulting, Inc. All Rights Reserved.





MedMap - Mozilla Firefox

File Edit View History Bookmarks Tools Help

https://medmap.hhs.gov/medmap/MedMapServ.html?uk=19aEwJL7-efK39Z1F622y096Yy/21123hagMMDPRxP3q5BK51d29KCPD/HVC\_180d3Kc

Most Visited | SRPUS Player - 100% | Pandora Radio - Live... | My Yahoo! | Gmail - Inbox - robsh... | LinkedIn: Home | ISI WebMail | Latest Headlines | HHS MedMap Login


**MedMap** @HHS.gov

Load/Save View Load Collection Add ShapeLine Spatial Query Search Text **Directions** Playback

Status: Wait for Pan/Zoom refresh before changing layer visibility. Done

Sat Alt. Help

**Regions**



Select Region ▼

**Layer Collections**

- ☒ HHS\_Billants
- ☒ HSP\_Boundaries
- ☐ HSP\_EmergencyServ
- ☒ HSP\_PubHealth
- ☒ HSP\_Geonames
- ☒ HSP\_TransAir
- ☒ HHS\_ADAMS

**External Layer Collections**

Shape & KML Overlays

- ☐ User-drawn
- ☐ Query
- ☐ KML

**Map** Satellite Hybrid Terrain

**Directions**

From: waverly city OH

To: bainbridge OH

Get Directions

Test Directions

**Waypoints**

To add a waypoint, either click on the mapped route to add a draggable waypoint, or

Enter the address (or lat/long) of a new waypoint, then choose its position in the list

Denver OH

Insert after Waypoint ▼

- A
- B

Delete Directions

Hide Traffic

Exit Directions

Map data ©2009 Tele Atlas - Terms of Use

Done



MedMap - Mozilla Firefox

File Edit View History Bookmarks Tools Help

https://medmap.hhs.gov/medmap/MedMapServ.html?uk=19aEwJUT-efK9ZIFb22yD98YCyf2112bHq#M=DFRxF3q5BK51d2b9BCFD/NWC\_180d3K

Most Visited | SRPUS Player - 100% | Pandora Radio - Live... | My Yahoo! | Gmail - Inbox - robhs... | LinkedIn: Home | ISI WebMail | Latest Headlines | HHS MedMap Login


**MedMap** @HHS.gov

Load/Save View Load Collection Add ShapeLine Spatial Query Search Text **Directions** Playback

Status: Deleted the directions

Sat Alt: Help

**Regions**



Select Region ▾

**Layer Collections**

- ☒ HHS\_Billants
- ☒ HSP\_Boundaries
- ☒ HSP\_EmergencyServ
- ☒ HSP\_PubHealth
- ☒ HSP\_Geonames
- ☒ HSP\_TransAir
- ☒ HHS\_ADAMS

**External Layer Collections**

Shape & KML Overlays

- ☒ User-drawn
- ☒ Query
- ☒ KML

**Map** | Satellite | Hybrid | Terrain

**Directions**

From: waverly city OH

To: bairbridge OH

Get Directions

**Waypoints**

To add a waypoint, either click on the mapped route to add a draggable waypoint, or

Enter the address (or lat/long) of a new waypoint, then choose its position in the list.

Denver OH

Insert after Waypoint ▾

Delete Waypoint ▾

Delete Directions

Show Traffic

Exit Directions

Map data ©2009 LeadDog Consulting, Tele Atlas, INEGI, ESRI, Google Technologies - Terms of Use

MedMap - Mozilla Firefox

File Edit View History Bookmarks Tools Help

https://medmap.hhs.gov/medmap/MedMapServ.html?tok=53E8rSPo-CP2EQ4HnVrFRGHL-bdUHP3pRyRpdY6LbVmpW93-47Wg12a0FHnyopTt2nWuJ2KCy6

Most Visited Getting Started Latest Headlines DC DoT FEMA Google Maps HHS - Portal IMAAC Login MD DoT Microsoft Outlook We... NWS radar loop Sterl... USDA Forest Service VA DoT

ArcGIS Server Manager Clear Cache Options A Peek Into Netflix Queues - NYTimes.c... MedMap

**MedMap** @HHS.gov

Load/Save View Load Collection Add Shape/Line Spatial Query Search Text Directions Playbook

Status: Wait for Pan/Zoom refresh before changing layer visibility... Done

Set Attrib: Help

Select Region

Layer Collections

- ☒ HHS\_Billians
- ☒ HSIP\_Boundaries
- ☒ HSIP\_EmergencyServ
- ☒ HSIP\_PubHealth
- ☒ HSIP\_Geonames
- ☒ NOM\_SnowDepth
- ☒ 20100113HaitiEarthqua
- ☐ Health\_Resources
- ☐ PortAuPrince Major Ro
- ☐ All Roads
- ☐ Collapsed Buildings\_1
- ☐ Infrastructure
- ☐ Railroads
- ☒ Shake\_Map
- ☐ State
- ☐ County
- ☐ Local
- ☐ HHS\_Assets\_Haiti

External Layer Collections

Shape & KML Overlays

- ☒ User-drawn
- ☐ Query

Map Satellite Hybrid Terrain

Enter address to look up:

Find

Delete Marker

Layer Attributes

Click on layer item on map to identify its attributes.

Map data ©2009 LeadDog Consulting, Europa Technologies - Terms of Use



MedMap - Mozilla Firefox

File Edit View History Bookmarks Tools Help

https://medmap.hhs.gov/medmap/MedMapServ.html?col=SIZE05P-DP2EQ4WVYR06389KM-VFPH8DA3D8V4gp-N0UdJuvUWQYq4ME50rvVABArTqin

Most Visited Getting Started Latest Headlines DC DoT FEMA Google Maps HHS - Portal INAAC Login MD DoT Microsoft Outlook We... NWS radar loop Sterk... USDA Forest Service VA DoT

ArcGIS Server Manager Clear Cache Options MedMap

**MedMap**  
HHS.gov

Load/Save View Load Collection Add ShapeLine Spatial Query Search Text Directions Playbook

Status: Wait for Pan/Zoom refresh before changing layer visibility Done

Set Attrb. Help

**MedMap Home**

Enter address to look up:

Find

Create Marker

**Layer Collections**

- ☒ HHS\_Bitans
- ☒ HSP\_Boundaries
- ☒ HSP\_EmergencyServ
- ☒ HSP\_PubHealth
- ☒ HSP\_Geonames
- ☒ NOAA\_SnowDepth
- ☒ HHS\_Assets\_Haiti
- ☒ 20100113HaitiEarthquake
- ☐ Distribution Sites
- ☐ Hospital Status
- ☐ Other Medical Facilities Status
- ☐ Displaced Persons PAP Unconfirmed Jan1
- ☐ Displaced Persons Unconfirmed Jan15
- ☐ Medical\_Facilities\_USAID20100120
- ☐ PortAuPrince Major Roads
- ☐ All Roads
- ☐ Collapsed Buildings\_15Jan1400hrs
- ☐ Infrastructure
- ☐ Railroads
- ☐ Wells
- ☐ Water Features
- ☐ Shake\_Map
- ☐ Earthquakes 12-19Jan2010
- ☐ State Areas
- ☐ County Areas
- ☐ Local Areas
- ☒ Total Population Estimate 2010

**External Layer Collections**

**Shape & KML Overlays**

- ☒ User-drawn
- ☒ Query
- ☒ KML

Select Region

Map Satellite Hybrid Terrain

Map data ©2009 Europa Technologies

20 mi 20 km

Done



MedMap - Mozilla Firefox

File Edit View History Bookmarks Tools Help

https://medmap.hhs.gov/medmap/MedMapServ.html?col=51205P5-DP2EQ4WvYTF1N5=5n205ysCtbnHwUp33MHnBvzSLWS3ho0utWvgkTDFF61X

Most Visited Getting Started Latest Headlines DC DoT FEMA Google Maps HHS - Portal INAAC Login MD DoT Microsoft Outlook We... NWS radar loop Sterk... USDA Forest Service VA DoT

ArcGIS Server Manager Clear Cache Options MedMap nhs0912.pdf (application/pdf Object)

**MedMap** **HHS.gov** **MAP**

Load/Save View Load Collection Add ShapeLine Spatial Query Search Text Directions Playbook

Status [Wait for Pan/Zoom refresh before changing layer visibility](#) Done

Set Attrb. Help

**MedMap Home**

Enter address to look up:

Find

Create Marker

**Layer Collections**

- ☒ HHS\_Blitans
- ☒ HSP\_Boundaries
- ☒ HSP\_EmergencyServ
- ☒ HSP\_PubHealth
- ☒ HSP\_Geonames
- ☒ NOAA\_SnowDepth
- ☒ HHS\_Assets\_Hall
- ☒ 20100113HaitiEarthquake
  - ☒ Hospital Status
  - ☐ Other Medical Facilities Status
  - ☒ Displaced Persons PAP Unconfirmed Jan15
  - ☒ Displaced Persons Unconfirmed Jan15
  - ☐ PortAuPrince Major Roads
  - ☐ All Roads
  - ☐ Collapsed Buildings\_15Jan1400hrs
  - ☐ Infrastructure
  - ☐ Railroads
  - ☐ Shake\_Map
  - ☐ Earthquakes 12-19Jan2010
  - ☐ State Areas
  - ☐ County Areas
  - ☐ Local Areas

**External Layer Collections**

**Shape & KML Overlays**

- ☒ User-drawn
- ☐ Query
- ☐ KML

**Map** **Satellite** **Hybrid** **Terrain**

Map of Port-au-Prince, Haiti, showing various hospitals and medical facilities. Labels include: HAITI FIELD HOSPITAL, PORT AU PRINCE HOSPITAL DE L'UNIVERSITE D'ETAT OPERATIONAL, PROBABLE CHINESE FIELD HOSPITAL, PORT AU PRINCE HOSPITAL FORMER MILITARY OPERATIONAL, PORT AU PRINCE HOSPITAL CENTRE DE PSYCHIATRIE, PORT AU PRINCE HOSPITAL DE L'UNIVERSITE D'ETAT OPERATIONAL, PORT AU PRINCE HOSPITAL DU CANAL, PORT AU PRINCE HOSPITAL SANATODIALE DE PORT AU PRINCE, and PORT AU PRINCE HOSPITAL DE L'UNIVERSITE D'ETAT OPERATIONAL. The map also shows major roads, collapsed buildings, and infrastructure.

2000 ft 1 km

Map data ©2009 Europa Technologies - Terms of Use

MedMap - Mozilla Firefox

File Edit View History Bookmarks Tools Help

https://medmap.hhs.gov/medmap/MedMapServ.html?tok=53d8r5Po-CP2EQ4HnVrFRGHL-bdUWp3pfyRpx3y6LbVmpW93-47Wg12a3FHnyopTt2nWuj2KCy6

Most Visited Getting Started Latest Headlines DC DoT FEMA Google Maps HHS - Portal IMAAC Login MD DoT Microsoft Outlook We... NWS radar loop Sterl... USDA Forest Service VA DoT

ArcGIS Server Manager Clear Cache Options A Peek Into Netflix Queues - NYTimes.c... MedMap

MedMap @HHS.gov

Load/Save View Load Collection Add Shape/Line Spatial Query Search Text Directions Playbook

Status: Wait for Pan/Zoom refresh before changing layer visibility... Done

Set Attrib: Help

Map Satellite Hybrid Terrain

Full Ass Full Ass Full Ass Full Ass Full Ass

Department	HHS/NDMS
Team_Name	DMAT (NJ-1)
Team Type	DMAT
Deployment_Start	undefined
Deployment_End	undefined
Topic	undefined
Response	undefined
Staff_Deployed	34
ETA	1/15/2010
Arrival	1/15/2010
Status	Billeting
Demob	undefined

MedMap Home

Enter address to look up:

Find

Delete Marker

Layer Collections

- ☒ HHS\_Billians
- ☒ HSIP\_Boundaries
- ☒ HSIP\_EmergencyServ
- ☒ HSIP\_PubHealth
- ☒ HSIP\_Geonames
- ☒ NOMA\_SnowDepth
- ☒ 20100113HaitiEarthquake
- ☒ HHS\_Assets\_Haiti
- ☒ Full Assets

External Layer Collections

Shape & KML Overlays

- ☒ User-drawn
- ☐ Query
- ☒ KML

Layer Attributes

Click on layer item on map to identify its attributes.

Map data ©2009 Europa Technologies - Terms of Use

