

Esri Federal GIS Conference

February 22–24, 2012 | Washington, D.C.

esri.com/fedcon



ArcGIS for National Government

Solutions to help you accomplish
your organizations mission



ArcGIS Resource Center Communities

ArcGIS Resource Center | ArcGIS | Sign in

Communities | Library | Blog | Forums | Videos

Search the ArcGIS Resource Center

Communities

User Communities

Community Maps Program A cooperative effort by Esri and the ArcGIS community to build useful, multi-scale basemaps of the world.	Defense & Intelligence GIS support for military and intelligence operations and activities.	Electric & Gas Maps and apps that help you implement GIS in your utility.	Facilities GIS support for facilities management.
Hydro Surface and groundwater resource management, water quality, flooding, and reporting.	Local Government ArcGIS for land records, public works, elections, planning, and public safety.	National Government GIS support for national government activities and key geographic information sharing.	Nonprofit Organizations GIS support for Donors and NonProfits missions around the world.
Ocean Use Planning Support for local, state, and federal government agencies to apply GIS to ocean use planning.	Public Safety ArcGIS for police, fire, EMS, and emergency management.	Roads & Highways Maps and applications for road & highway safety and maintenance activities.	Water Utilities ArcGIS for water, sewer and storm water utilities.

Technical Communities

3D GIS Working with geodata, analysis, and visualization in 3D.	Analysis & Geoprocessing Using tools and models to perform geographic analysis and processing.	CAD Integration Integrating CAD information into your GIS operations.	Developer Using SDKs and developer tools to extend ArcGIS.
---	--	---	--

ArcGIS for National Government

ArcGIS Resource Center

Communities Library Blog Forums Videos

ArcGIS Sign In

Search National Government

National Government

Communities

Maps and apps that help you implement GIS for national Government, and destination where users, partners, and Esri staff can collaborate.

Soils for the Nation and What This Represents

There is a real need for national government organizations to publish and share critical data layers for the nation. These datasets must be scientifically compiled and maintained in order to support critical work and activities.

[Read more...](#)

Quick Links

I'm Interested In...

- Agriculture
- Defense & Intelligence
- Demographics & Statistics
- Energy
- Facilities
- Geology
- Health
- Homeland Security
- Housing
- Hydrology
- Natural Resources
- Nonprofit Organizations (NPO)
- Oceans

Support

- Forums
- Ideas
- Support

Featured Government Sites

- GIS for Federal Government
- Geospatial Platform

Gallery

More Gallery posts

Renter Occupied Housing

USA Supermarket Access

U.S. Develop-able Potential for Offshore Wind Energy

Diabetes

Population 18 to 64

Esri Federal GIS Conference

February 22–24, 2012 | Washington, D.C.

esri.com/fedcon



ArcGIS for Facilities

Solutions to help you accomplish
your organizations mission



GIS Is Not Your Mission

**I Don't Do GIS
Fulltime...**

**I Do Portfolio
Assessment**

**I Do Space
Management**

**I Do Safety &
Security
Planning**



Intelligent Mapping for Facilities Professionals

Community



Solutions for the Facility Community

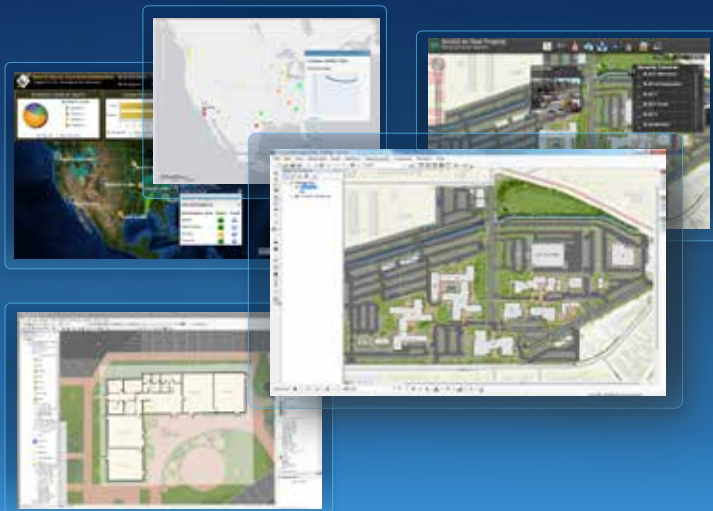
Challenges



- discovering data
- making and sharing intelligent maps and apps
- conveying solution to a problem or decision support story

Intelligent Mapping Resources

Templates



- are key to ArcGIS for Facilities solutions
- provide maps and apps to help you quickly implement intelligent facility mapping

ArcGIS for Facilities

Intelligent mapping resources organized around the work you do ...



... to solve problems and provide decision support

ArcGIS for Facilities

A geospatial solution foundation for facility professionals ...



... to configure and use ArcGIS

ArcGIS for Facilities Resource Center

Community



ArcGIS Resource Center


Communities Library Blog Forums Videos Search Facilities

Facilities

Communities

Campus and Building Performance Mapping

ArcGIS for Facilities provides freely available campus and building map and site templates as well as superior data models and workflows that are designed to help facility and building management professionals implement a foundation level of facility mapping capabilities.



Quick Links






You're interested in...

- Portfolio Management
- Planning & Eia Selection
- Space & Move Management
- Safety & Security
- Emergency Management
- Energy & Sustainability
- Environmental Compliance
- Operations & Maintenance
- Work Order Management

Support

- Forums
- Ideas
- Support

Gallery [More Gallery posts](#)

-  Local Government Maps and Apps Gallery
-  ArcGIS Viewer for Flex 2.5
-  Campus Place Finder (ArcGIS 10)
-  Campus Editing (ArcGIS 10)
-  Campus Basemap (ArcGIS 10)

Mapping & Analyzing Portfolio Performance

Intelligent Maps & Apps



Discovering, Organizing, and Sharing

ArcGIS Online



- a gateway to *your* ArcGIS for Facilities
- help organize the geospatial tools that enable your organization

Campus & Building Performance Mapping

Intelligent Maps & Apps



Space Management

Campus & Building Performance Mapping

Intelligent Maps & Apps



Safety & Security

ArcGIS for Facilities Solutions


Intelligent mapping resources organized around the work you do ...



... to solve problems and provide decision support

ArcGIS for Facilities Resource Center

Community



The image shows a 3D visualization of a campus layout on the left, with various buildings, roads, and green spaces represented by colored blocks and lines. On the right, there is a screenshot of the ArcGIS for Facilities Resource Center website. The website has a blue header with the ArcGIS Resource Center logo and navigation links for Communities, Library, Blog, Forums, and Videos. A search bar is located in the top right corner. The main content area is titled "Facilities" and includes a "Communities" section. The featured article is "Maintaining Facilities and Grounds Data," which describes the Campus Editing template as an editing map that supports the maintenance of buildings, interior spaces, and related exterior campus features. To the right of the article is a "Quick Links" section with a list of topics: Portfolio Management, Planning & Site Selection, Space & Move Management, Safety & Security, Emergency Management, Energy & Sustainability, Environmental Compliance, Operations & Maintenance, and Work Order Management. Below the article is a "Gallery" section with five items: Local Government Maps and Apps Gallery, ArcGIS Viewer for Flex 2.5, Campus Place Finder (ArcGIS 10), Campus Editing (ArcGIS 10), and Campus Basemap (ArcGIS 10).

[//resourcesbeta.esri.com/en/communities](http://resourcesbeta.esri.com/en/communities)

Thursday Evening Reception

- 6:30 – 9:30 pm
- **Smithsonian Air and Space Museum**
- **Logistics:**
 - 6:15 – 10:00 pm Buses transport between convention center and reception
 - Conference Badge needed for reception
 - Coat check – available at entrance
 - Serving hot hors d'oeuvres and beverages



Friday Closing Session and Hosted Lunch

- **Join conference attendees for lunch and closing session**
- **11:30 am – 1:30 pm**
- **Ballrooms A-C, Third Level**
- **Closing Speaker – Chris Smith, United States Department of Agriculture**
- **Wrap-up and request for feedback with Jack Dangermond**



Upcoming Events (www.esri.com/events)

March 8 - MeetUp at Esri (Vienna, VA)

April 12 - MeetUp in DC area (location TBD)

Mar 24-27 – Esri Partner Conference (Palm Springs, CA)

Mar 26-27 – Esri Developer Summit (Palm Springs, CA)

July 21-24 – Esri Homeland Security Summit (San Diego, CA)

July 23-27 – Esri International User Conference (San Diego, CA)



Esri Federal GIS Conference

February 22–24, 2012 | Washington, D.C.

esri.com/fedcon



Thank You

Please complete session evaluation form





esri