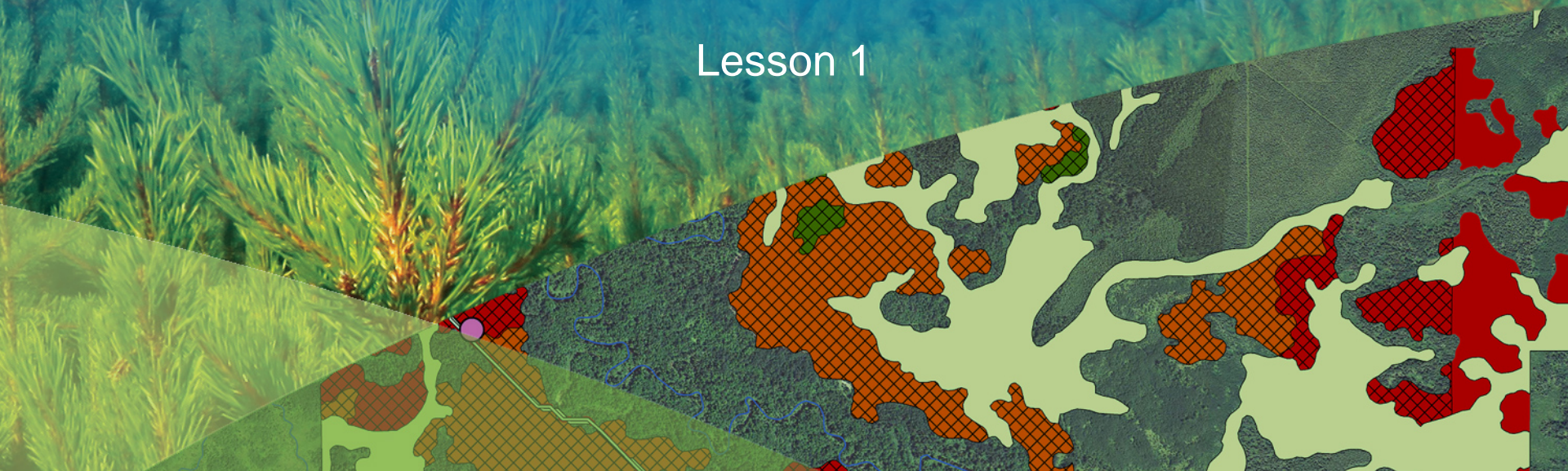




# Editing with Feature templates

Miriam Schmidts

Lesson 1



# Learning objectives

- **Introductions**
- **Understand what feature templates are**
- **Use feature templates to create and edit features**

# Introductions

- **Please tell us a little bit about yourself**
  - **Who you are: your name, where you are from**
    - **The organization you work for**
  - **How much editing experience you have**
  - **Something you would like to get out of this workshop**

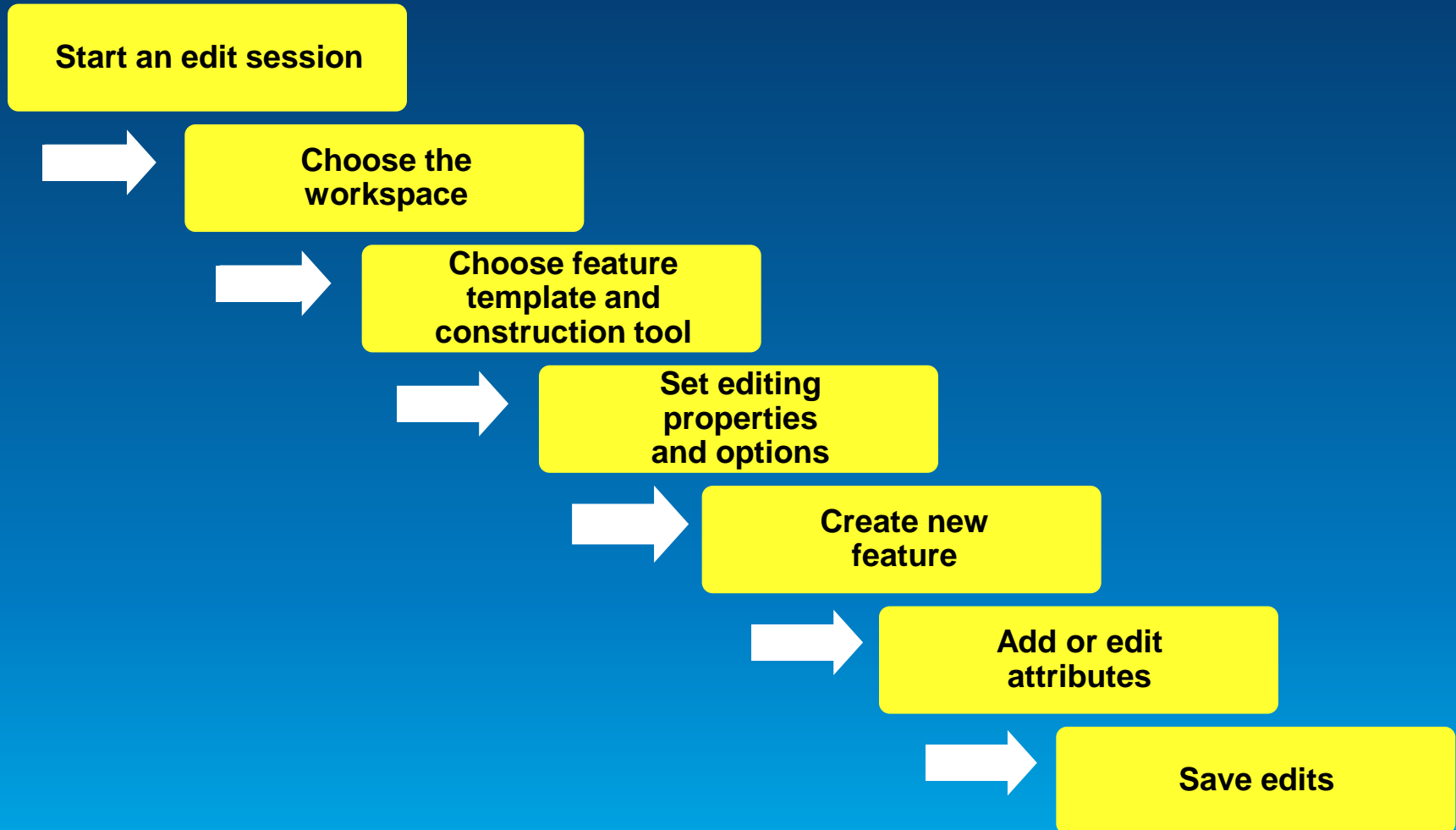
# What types of data can you edit?

- Geodatabase
- Shapefile
- Non-spatial database tables

- **Point**
- **Line**
- **Polygon**



# The editing workflow



# Feature templates

- Define information to create a feature

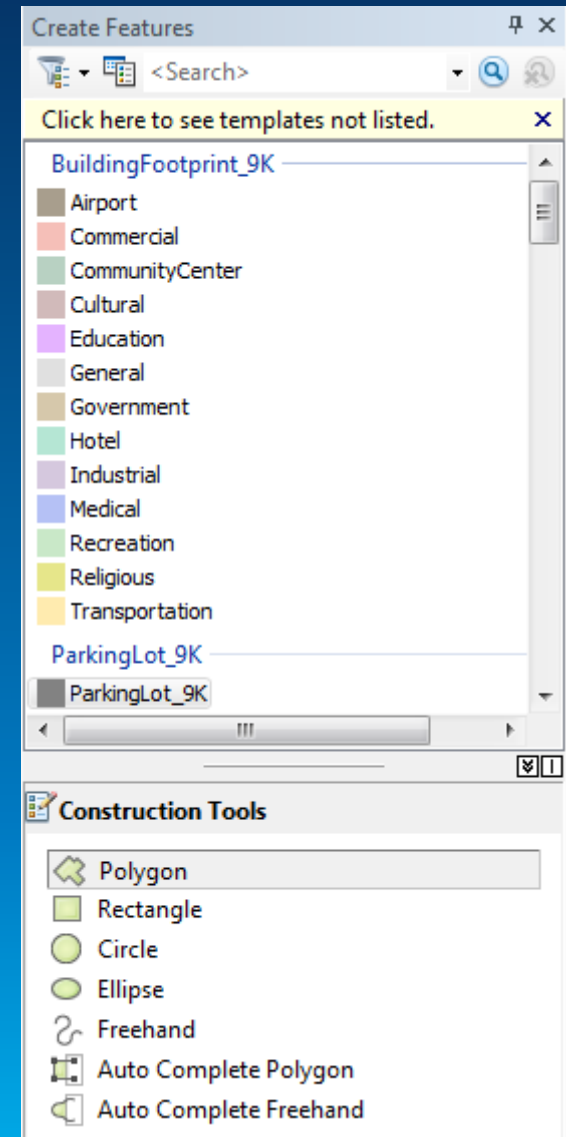
  - Graphic showing:

    - Target layer
    - Symbol used to draw features
    - Default attribute values
    - Default tool
    - Name, description, tags

- Automatically created

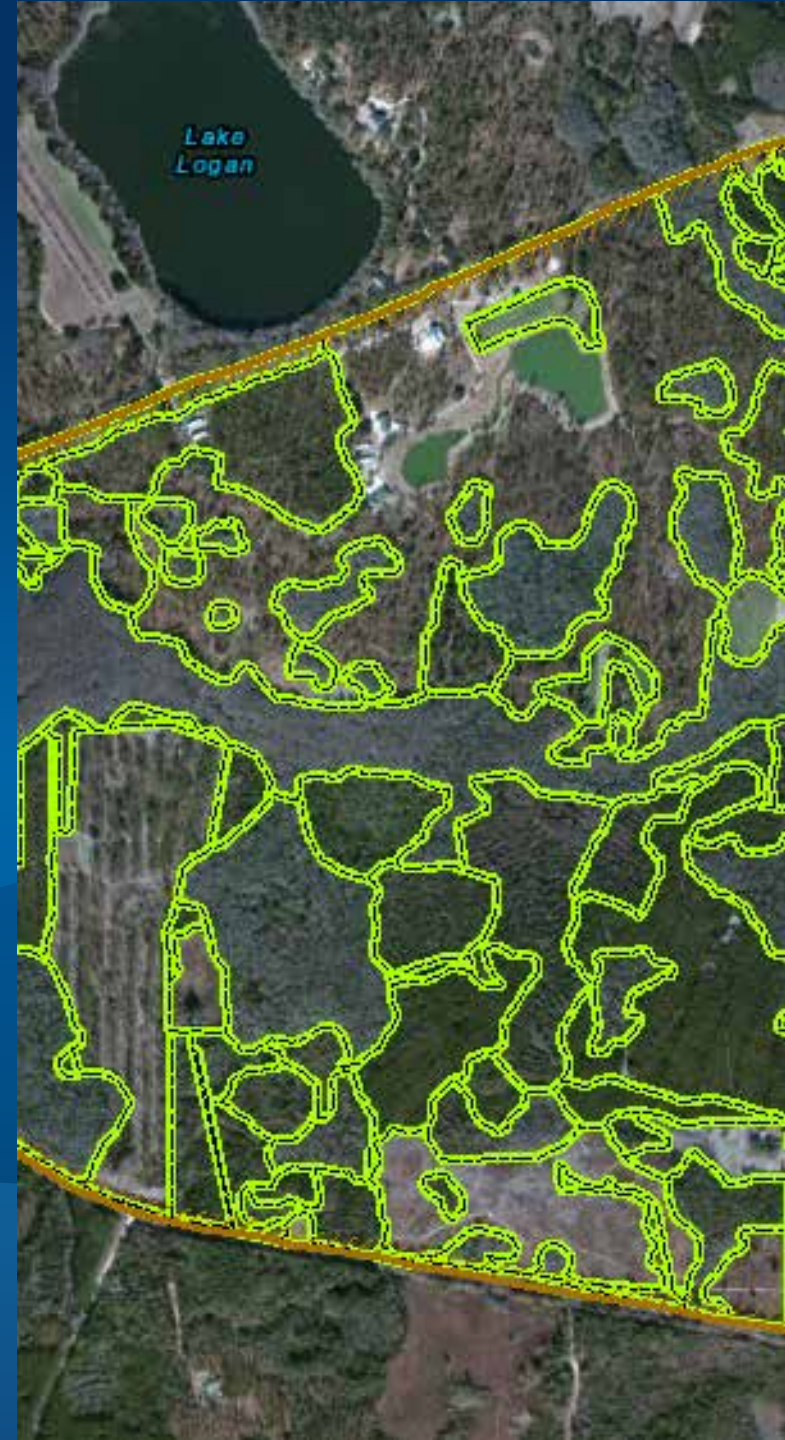
  - At the beginning of each edit session
  - Can be created manually

- Saved in .mxd, .lyr, or map package



Demo

# Editing with Feature Templates



# Exercise introduction

- **Editing with Feature Templates**
  - Explore feature templates
  - Create new features with feature templates
  - Edit existing features with feature templates