



Integrating data

Miriam Schmidts

Lesson 3

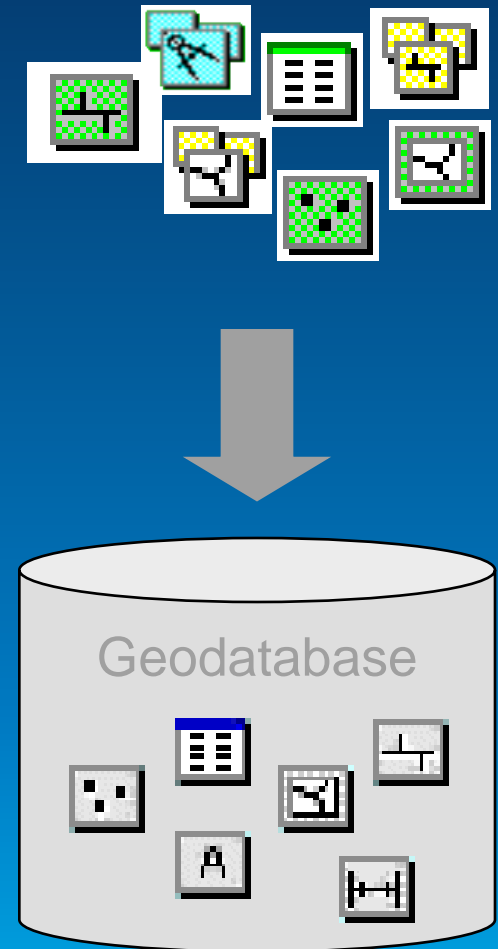


Learning objectives

- **Explore different methods to assemble datasets in a geodatabase**

Getting data into the geodatabase

- **Import (into new class)**
 - Import both schema and data
 - ArcCatalog or ArcToolbox
- **Load/Append (into existing class)**
 - ArcCatalog Simple Data Loader
 - ArcMap Object Loader
 - ArcToolbox Append tool
- **Copy/Paste while editing**
 - Only in ArcMap
- **Create new data (digitize)**



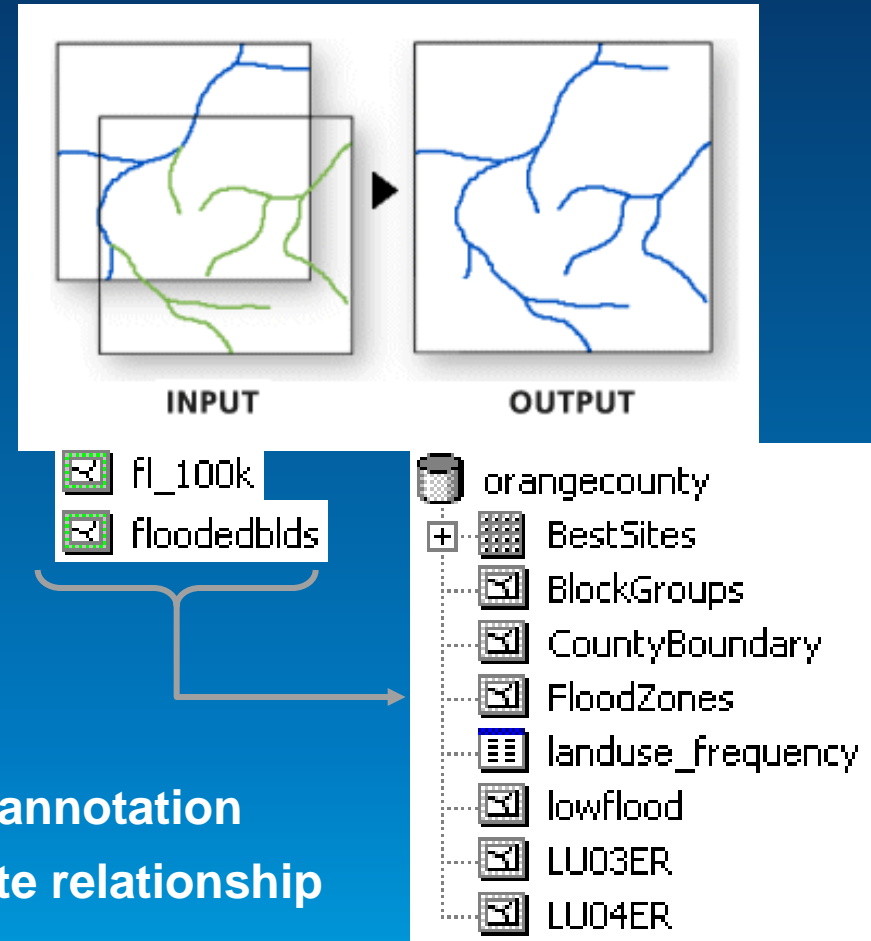
ArcCatalog or ArcToolbox Import tools

- One geodatabase feature class created for each input
- Import does not add to an existing feature class
- May select features by attributes
- Inputs are projected into a feature dataset's projection
 - Geographic transformation is not performed
 - If transformation is needed, use the Project tool before import



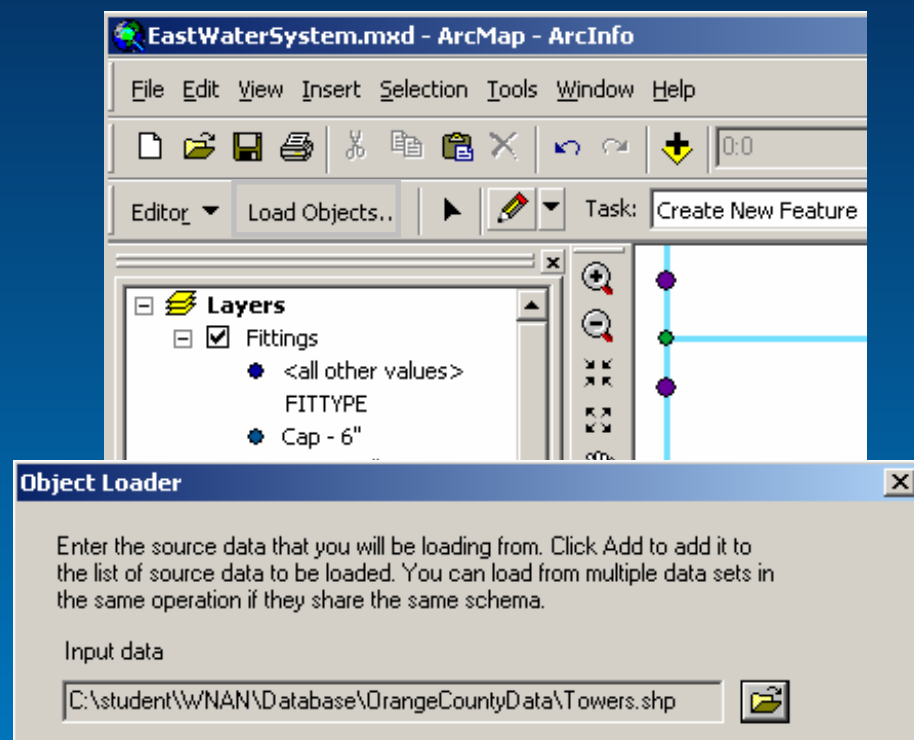
ArcCatalog Simple Data Loader

- Class must already exist
- Source schema must match
- Can map fields
- Supports attribute query
- Projects into a feature dataset
 - No geographic transformation
- Cannot be used with:
 - Network feature classes
 - Feature classes with feature-linked annotation
 - Origin feature classes in a composite relationship



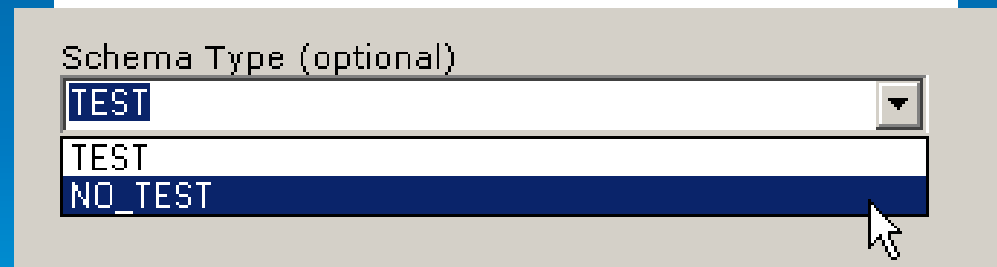
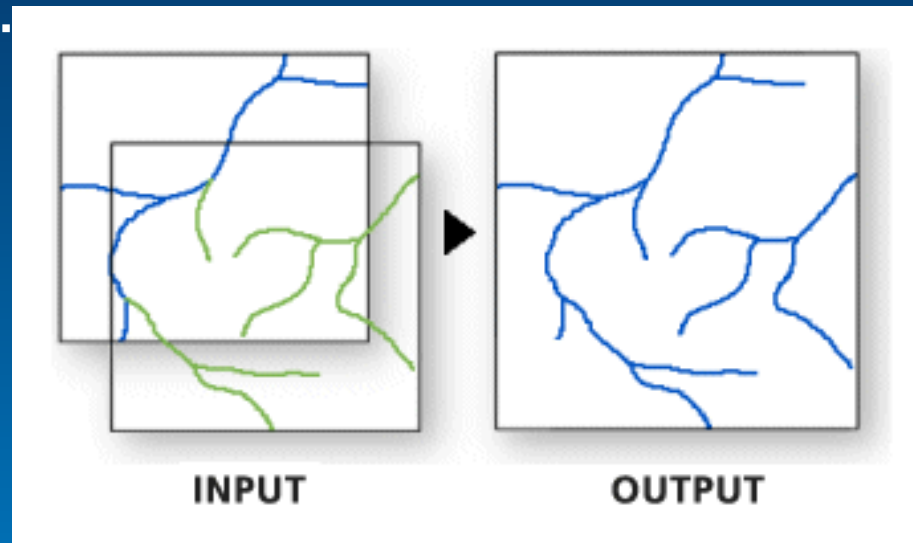
ArcMap Object Loader

- Like Simple Data Loader, but...
 - May apply rules during load
 - May snap features
 - Only in an edit session
 - Must add command to ArcMap interface
- Can be used with:
 - Geometric network feature classes
 - Feature classes with feature-linked annotation
 - Origin feature classes in a composite relationship



ArcToolbox Append tool

- Like Simple Data Loader, but...
 - Source schema may differ (NO_TEST option)
 - Selection sets honored (in ArcMap only)
 - No attribute query
- Coverages have two unique field names
 - Cover# and Cover-ID
 - Use NO_TEST to append multiple coverages



Integrating data

