



ARMS

Alabama Resource Management System



Target Audience

- State Level Policy

- Agency Heads
- Agency Staff
- Governor's Office
- Legislators
- Advocacy Groups
- Foundations

- Local Policy and Program

- Policy Councils
- Local Government Officials
- Local Programs

What Is ARMS?

✓ Network of Agencies and Communities

- Know what is available
- Know where to get it
- See the big picture



What Is ARMS?

✓ Connection between Agencies, Programs and Communities

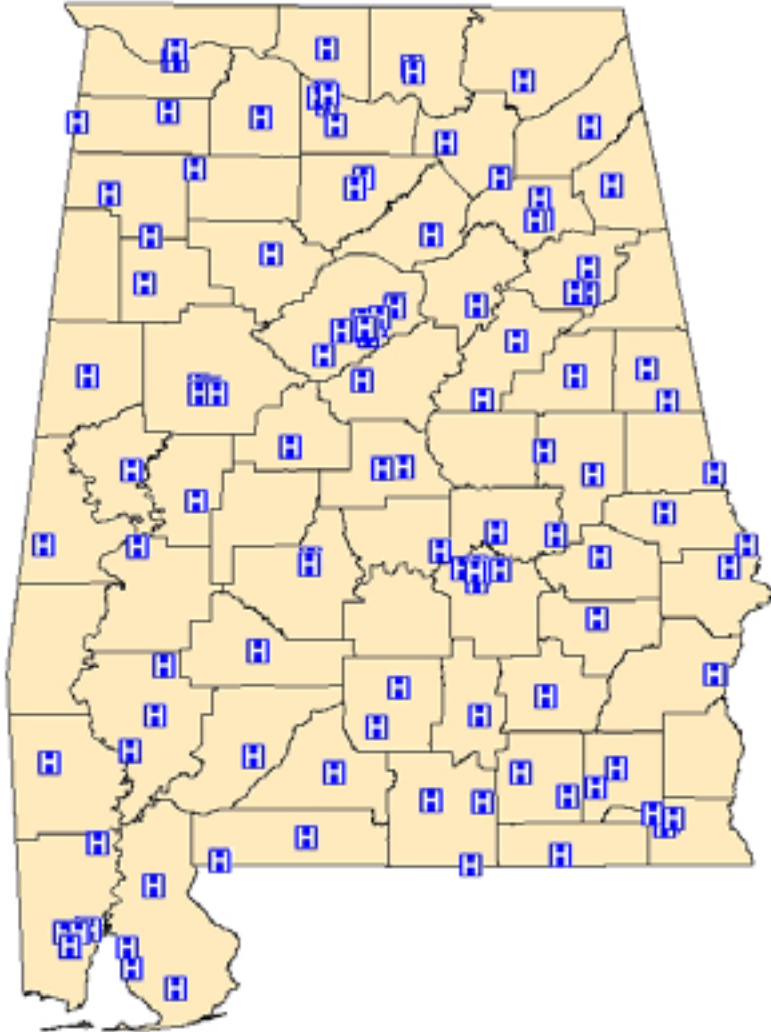
- Share Information
- Make Better Plans
- Inform Decision Makers



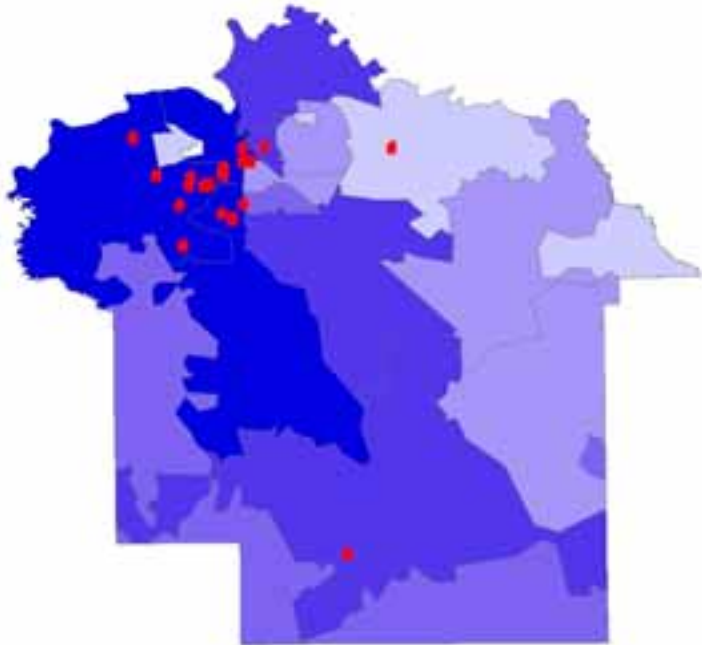
What Is ARMS?

✓ Resource Database

- Identify Services
- Respond Better to Needs
- Eliminate Duplication
- Identify Gaps



What Is ARMS?



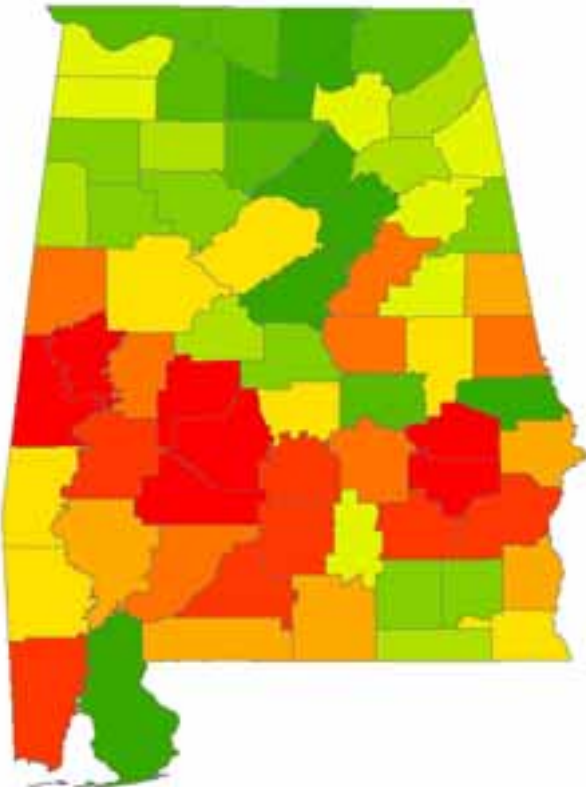
✓ Planning and Evaluation Tool
for Agencies, Programs and
Communities

- Identify Areas of Need
- Visualize Effectiveness
- Focus Resources

What Is ARMS?

✓ Accountability

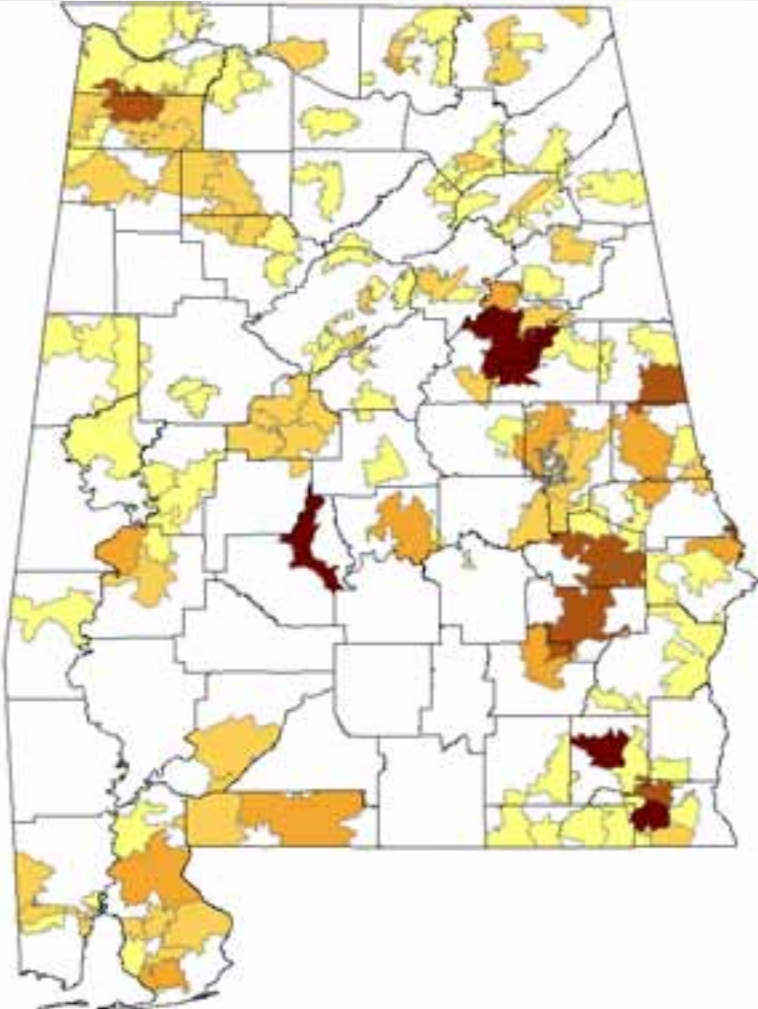
- Measure Outcomes
- Share Results
- Visualize Change



What Is ARMS?

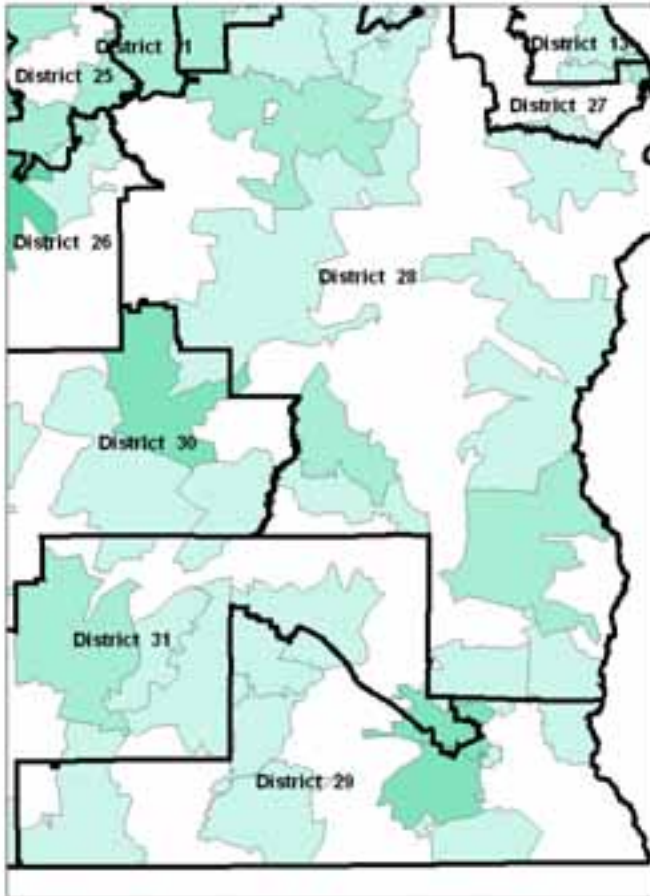
✓ Grant Writing Tool

- Find Numbers
- Explain and Validate Need
- Save Time
- Enhance Proposals / Grants



What Is ARMS?

✓ Communication Tool

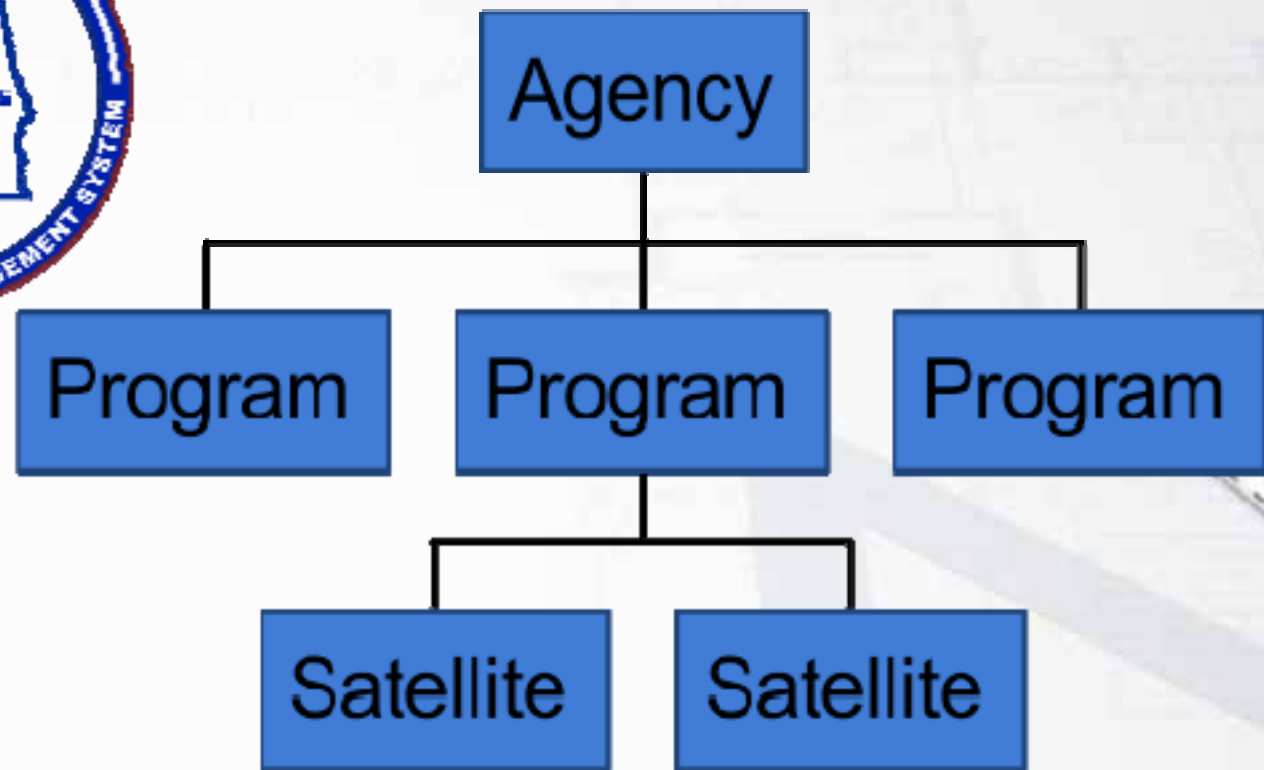


- Advocacy
- Lobbying
- Media

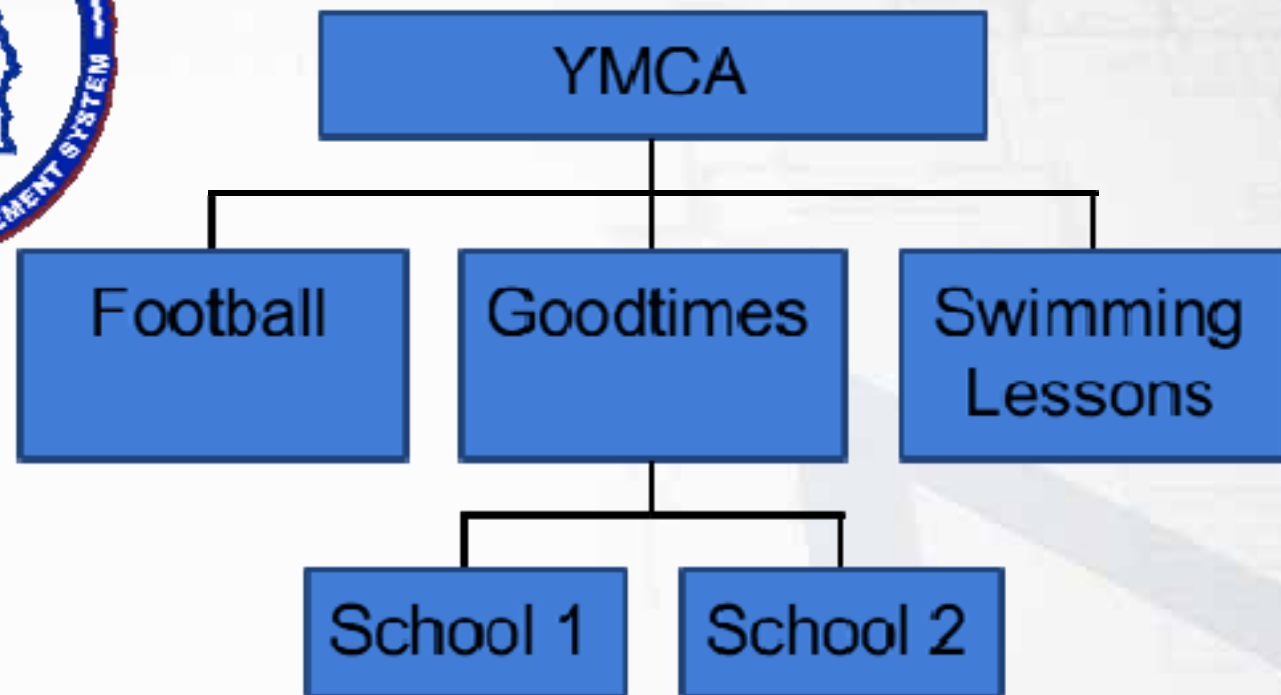
Three Types of Data



Resources



Resources



A desk lamp is positioned in the upper left corner of the slide. The background features a brick wall at the top and a light-colored surface, possibly a desk, with faint grid lines and a pen visible on the right side.

Agency

- Name, Address, Phone, Contact
- Type of Organization

Resources Program

- Name, Address, Phone, Contact
- Description
- Data Contact
- Type of Program
- Target Audience
- What To Bring
- Hours of Operation
- Coverage Area
- How To Get Started
- Languages
- Keywords

The background of the slide is a photograph of a desk. In the top left corner, there is a silver desk lamp with a glass shade. A white ruler is placed diagonally across the desk. A red and white pen lies horizontally near the bottom right. The desk surface is light-colored, and a brick wall is visible in the background.

Resources

211 / United Way

State Agencies

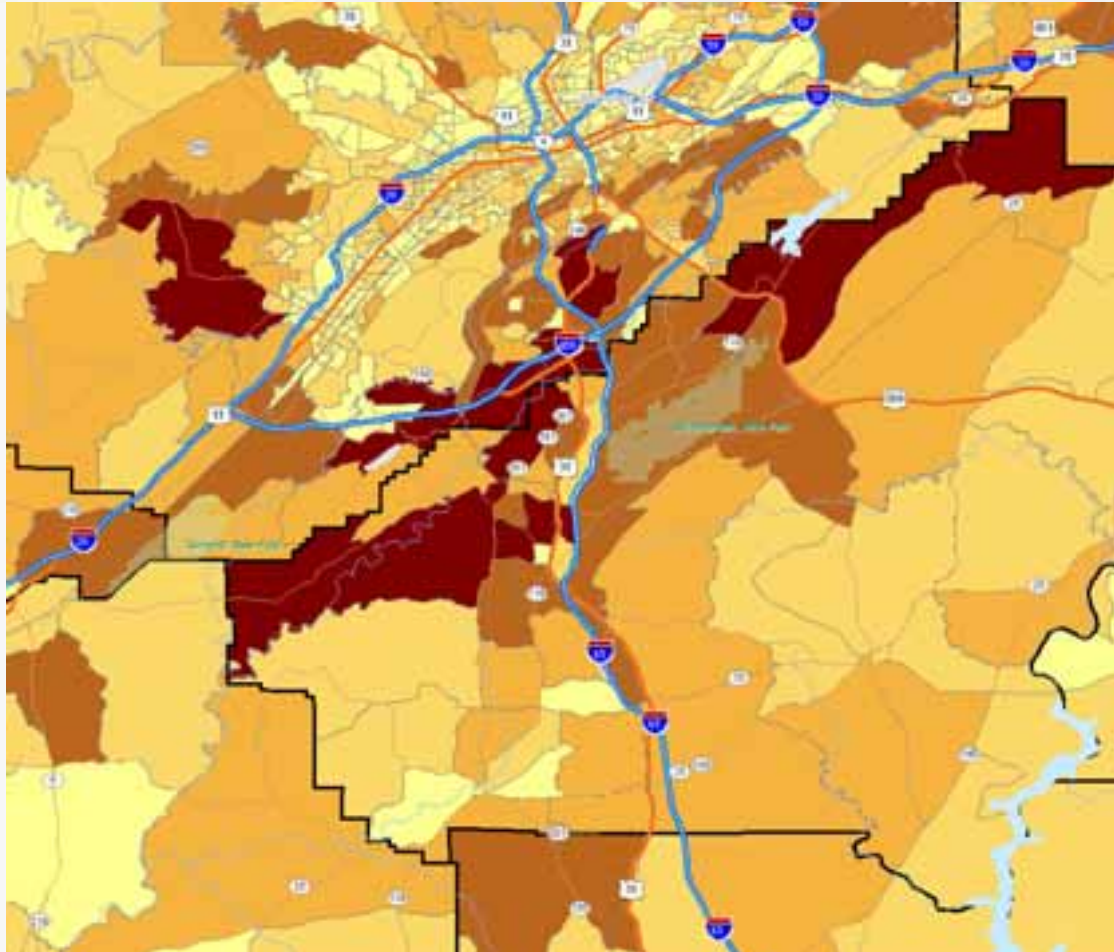
Children's Policy Councils

Communities

Three Types of Data



Statistics



Demographics

Socio-Economic

Political

*Health and Human
Services*

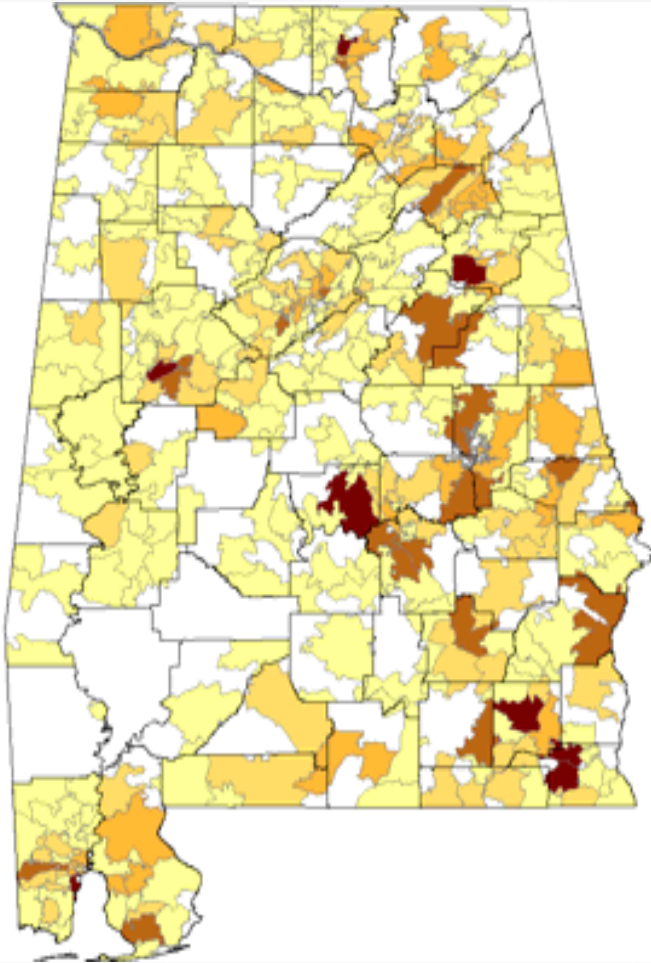
Administrative

Statistics

State Reports

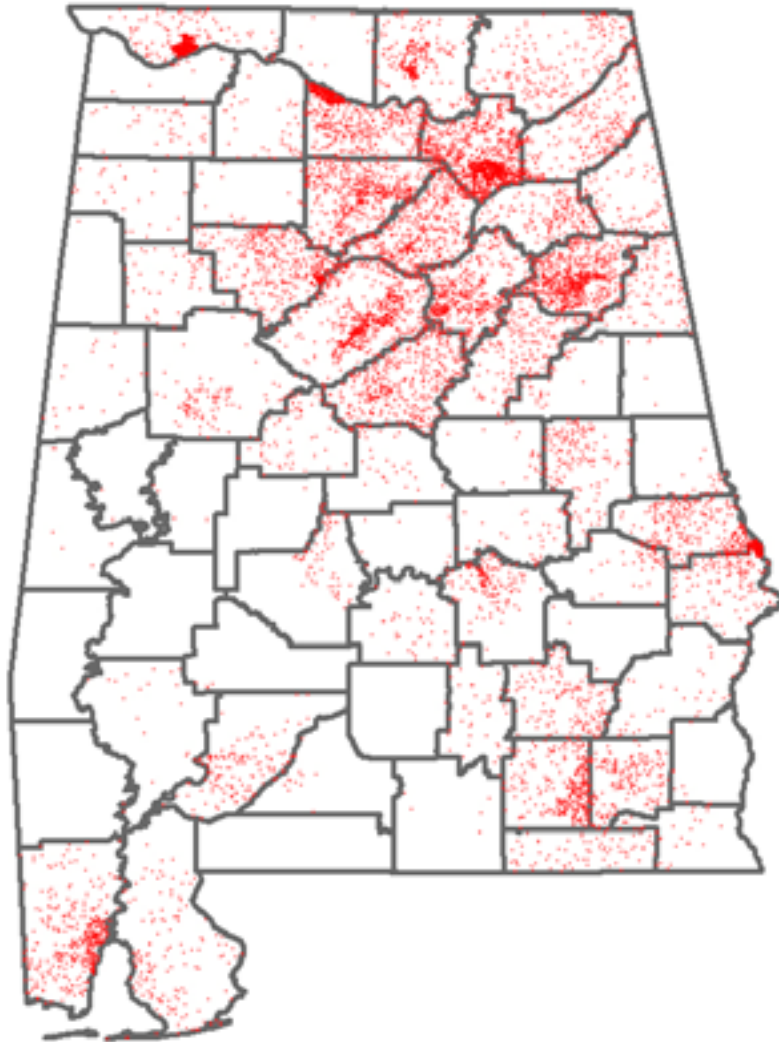
Kids Count

No Child Left Behind



Statistics

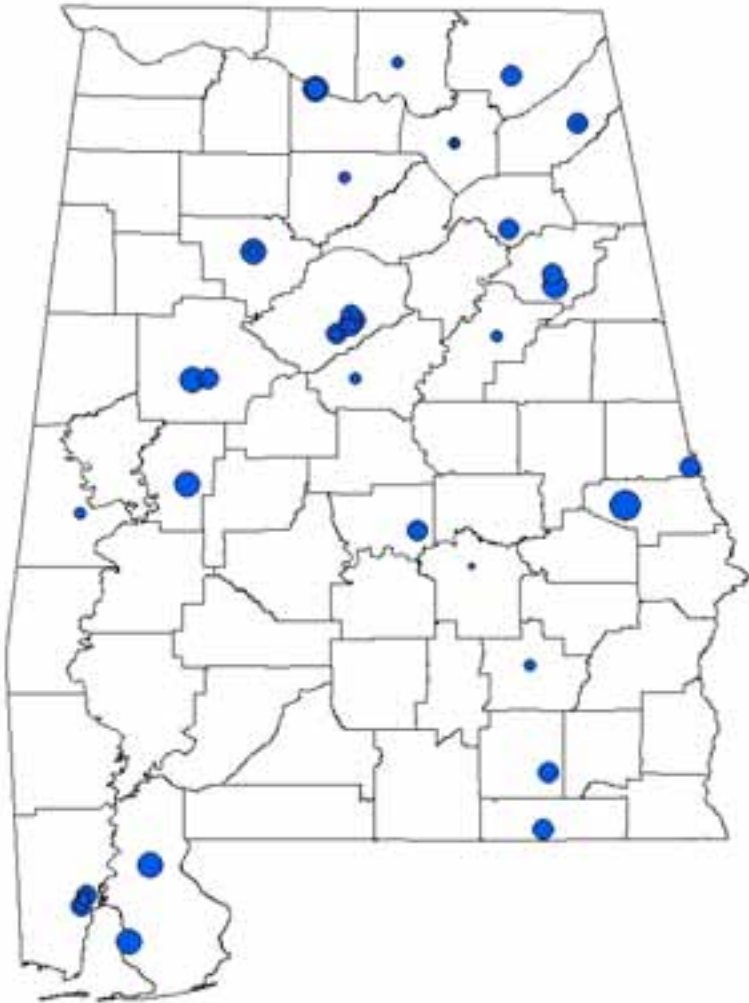
*Detailed queries from
original source data*



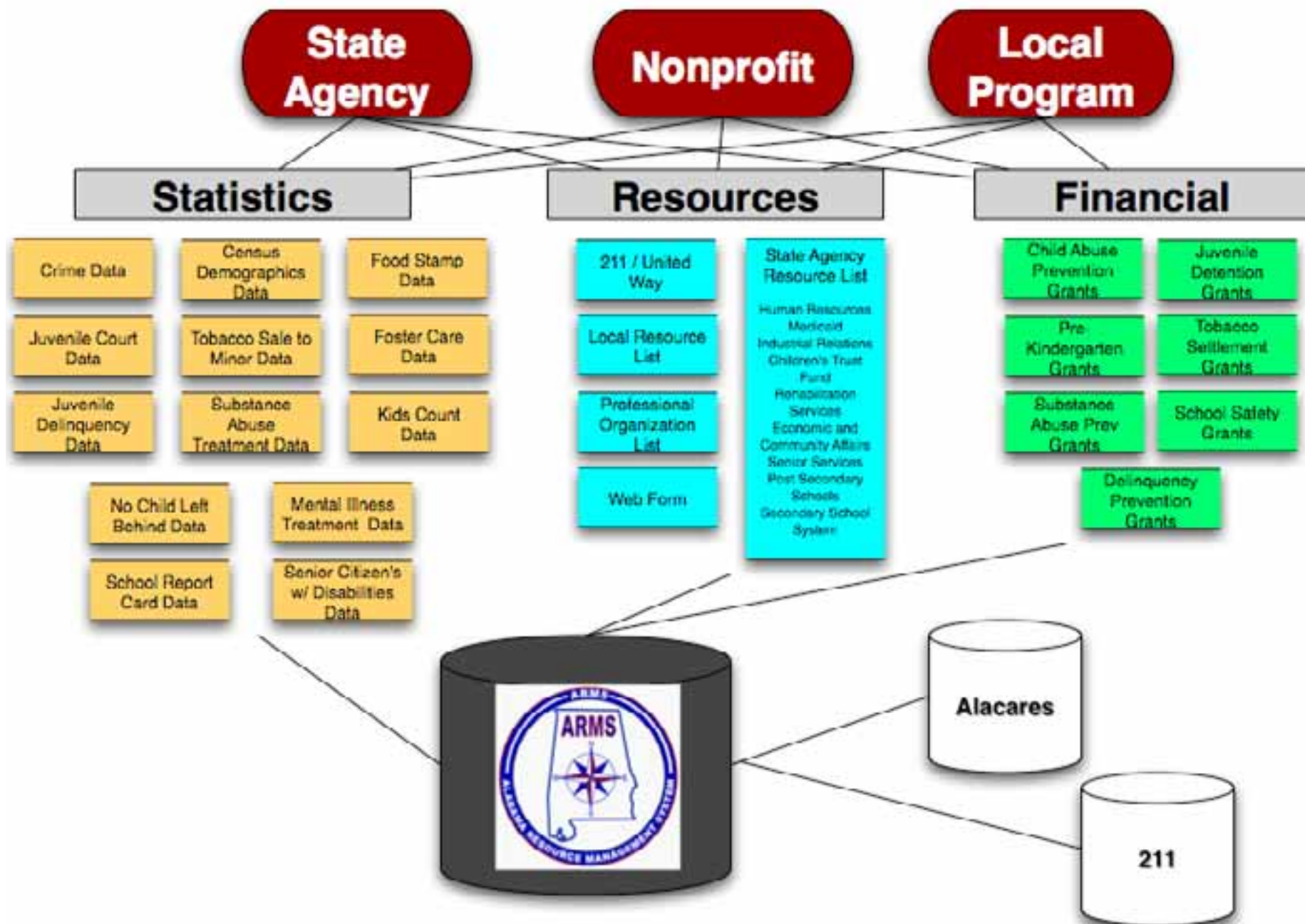
Three Types of Data



Financial



Grantor
Grantee
Address
Description
Amount
Target
Population
Type





ARMS

The Alabama Resource Management System

[Online Court Data Search](#)

1. Data of Interest

I am interested in searching for statistics regarding :

☒ Individuals ☐ Cases

2. Search Criteria

Select a date range subject matter

☒ Complaint ☐ Petition ☐ Disposition

Select a charge type

☒ Referral Reason ☐ Complaint ☐ Disposition

Disposition Charge Type

Felony
Misdemeanor
Violation
Other

Race

White
Black
Hispanic
Asian

Care Pending Disposition

Not Detained
Detention Facility
Jail
Jail/Detention

Complaint Start Date

Complaint End Date

Select a charge

Adjudication Type

Adult
CHINS
Delinquent
Dependant

Sex

Male
Female

Age at Offense

Under 10
10
11
12

Referral Source

Law Enforcement
School
Probation Officer
Parents, Guardian/Relative

Disposition

AFTERCARE
AFTERCARE - TRANSFER TO THIS COUNTY FOR SUPERVISION
AFTERCARE CONTINUED - DURATION EXTENDED
AFTERCARE CONTINUED - MODIFIED

3. Output selection

4. Display Results



ARMS

The Alabama Resource Management System

[Online Court Data Search](#)

1. Data of Interest

I am interested in searching for statistics regarding :

☒ Individuals ☐ Cases

2. Search Criteria

Select a date range subject matter

☐ Complaint ☐ Petition ☒ Disposition

Select a charge type

☐ Referral Reason ☐ Complaint ☒ Disposition

Disposition Charge Type

Felony
Misdemeanor
Violation
Other

Race

White
Black
Hispanic
Asian

Care Pending Disposition

Not Detained
Detention Facility
Jail
Jail/Detention

Disposition Start Date

01/01/2005

Disposition End Date

12/31/2005

Select a charge

TOP2- SHOP LIFTING
TOP3- SHOP LIFTING
TOWING SKIER W/O MIRRORS
TRAFFICMISC
TRAFFICKING-COCAINE
TRAFFICKING-METHAMPHETAMINE
UNAUTHREMOVE/FALSIFY LICENSE PLATE
UNAUTHORIZED USE MOTOR VEHICLE - BY FORCE
UNAUTHORIZED USE OF A MOTOR VEHICLE
UNAUTHORIZED USE OF A VEHICLE
UNDER 21 .02 ALCOHOL
UNDER INFLUENCE
UNLAW MANUFACTURE CTN SUBS 1ST DEGREE
UNLAW MANUFACTURE CTN SUBS 2ND DEGREE
UNLAWFUL DISTRIBUTION OF A CONTROLLED SUBSTANCE
UNLAWFUL IMPRISONMENT 1ST
UNLAWFUL IMPRISONMENT 2ND
UNSWORN FALSE/AUTHORITIES
UNTAGGED OYSTERS
USE/POSSESSION DRUG PARAPHERNALIA
USING FASCIMILE OF ID
USING FORCE TO RESIST ARREST
VEHICULAR HOMICIDE
VIO RESTRICTIONS

3. Output selection



ARMS

The Alabama Resource Management System

County Court Data Search

1. Data of Interest

I am interested in searching for statistics regarding :

☒ Individuals ☐ Cases

2. Search Criteria

Select a date range subject matter

☐ Complaint ☐ Petition ☒ Disposition

Select a charge type

☐ Referral Reason ☐ Complaint ☒ Disposition

Disposition Charge Type

Felony
Misdemeanor
Violation
Other

Race

White
Black
Hispanic
Asian

Care Pending Disposition

Not Detained
Detention Facility
Jail
Jail/Detention

Disposition Start Date

01/01/2005

Disposition End Date

12/31/2005

Select a charge

UNLAWFUL DISTRIBUTION OF A CONTROLLED SUBSTANCE

Adjudication Type

Adult
CHINS
Delinquent
Dependant

Sex

Male
Female

Age at Offense

16
17
18
Over 18

Referral Source

Law Enforcement
School
Probation Officer
Parents, Guardian/Relative

Disposition

AFTERCARE
AFTERCARE - TRANSFER TO THIS COUNTY FOR SUPERVISION
AFTERCARE CONTINUED - DURATION EXTENDED
AFTERCARE CONTINUED - MODIFIED



County Name	Occurrences
Baldwin	1
Calhoun	1
Clay	1
Escambia	1
Jackson	1
Mobile	1
Randolph	1



Data Categories

☐ Statistics

- ☐ Census Demographic
- ☒ Safety
- ☐ Education
- ☐ Early Care and Education
- ☐ Economic Security
- ☐ Parent Involvement and Skills
- ☐ Emergency Response
- ☐ Health

☐ Resources

- ☐ Facility Type
- ☐ Key Words

☐ Funding

- ☐ Community Grants

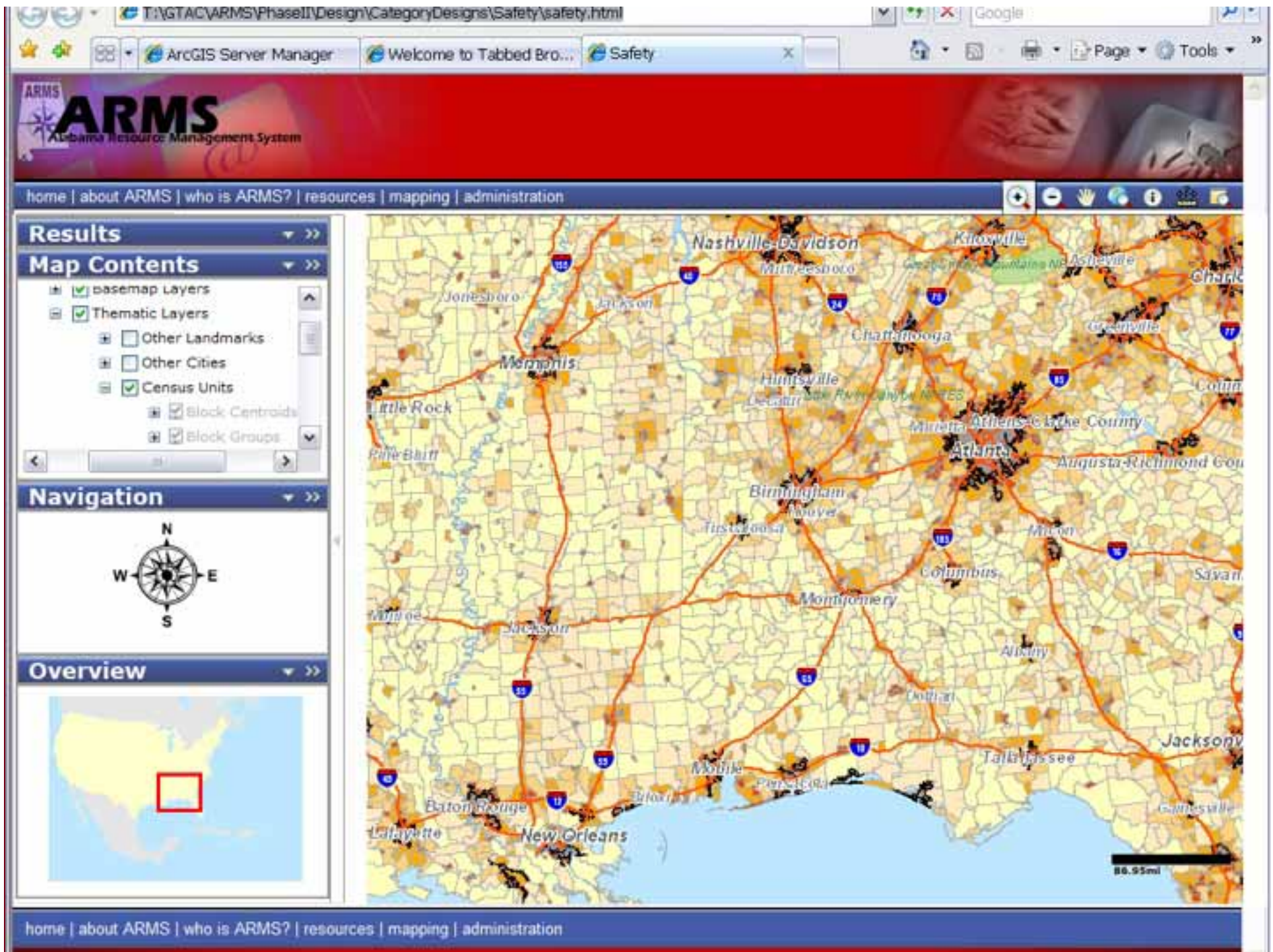
You have selected Safety Statistics data.

Regardless of jurisdiction, ethnicity, nationality, or sex; all humans have the right to safety to include the freedom from abuse, neglect, crime and drugs. Through legislation, this country and this state have provided for laws to ensure that safety. Some of those rights are:

- **Security** rights that protect people against crimes such as murder.
- **Due** process rights that protect against abuses of the legal system such as imprisonment without trial, secret trials and excessive punishments.
- **Equality** rights that guarantee equal citizenship, equality before the law and nondiscrimination.
- **Welfare** rights (also known as economic rights) that require the provision of education and protections against severe poverty and starvation.
- **Group** rights that provide protection for groups such as ethnic groups.

There are state and local agencies that provide resources to help combat safety problems. Statistical data collected on abuse, juvenile crime by type of crime, drug use by drug and all by area is extremely useful to many agencies in determining which demographics need which resources.



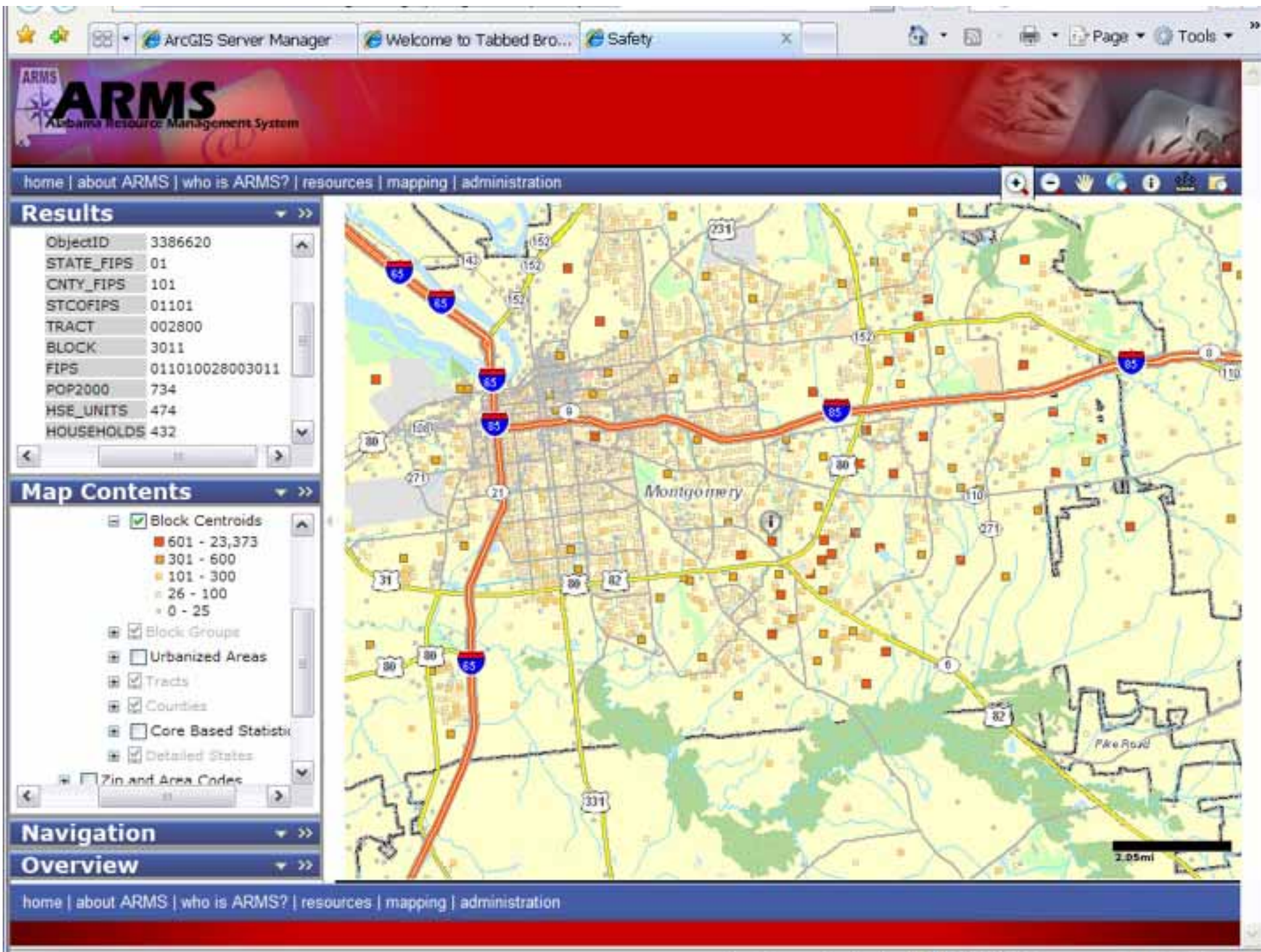


Map Contents

Thematic_Maps

USA Thematic Maps

- ☒ Basemap Layers
- ☒ Thematic Layers
 - ☐ Other Landmarks
 - ☐ Other Cities
 - ☒ Census Units
 - ☒ Block Centroids
 - 601 - 23,373
 - 301 - 600
 - 101 - 300
 - 26 - 100
 - 0 - 25
 - ☒ Block Groups
 - ☐ Urbanized Areas
 - ☒ Tracts
 - ☒ Counties
 - ☐ Core Based Statistical Areas
 - ☒ Detailed States
 - ☐ Zip and Area Codes
 - ☐ US Congressional Districts
 - ☐ USGS Quad Sheets
 - ☐ Land Management
- ☒ Background






Communities

- Improved Access to Information
- Advocate for Policy Change
- Evaluate Programs
- Make Program Decisions



State Agencies

- Evaluate Effectiveness and Needs
 - Understand Policy Issues
 - Make Funding Decisions
 - Increased Efficiency and Transparency
- 



Future

- Services
- Models, Tasks, Spatial Analysis
- Explorer
- Community Scorecards
- Metadata
- Simplify, Simplify, Simplify
- Speed, Speed, Speed
- Local Data Displays
- Training