



Integrating GIS in Decision Making Process: A Case Study from the City of Houston, Texas

Riju Stephen MS

Brenda Reyes, MD, MPH

Ketan Inamdar, MS, MBA

Mark Perry MPH

**Office of Surveillance and Public Health Preparedness
City of Houston**

Background

- **The City of Houston is committed to work in partnership with the community to promote and protect the health and social well being of Houstonians**
- **Several projects are in operation to provide service to Houstonians and to make Houston at international standards**
- **The aesthetics of the city landscape should not be compromised at the expense of the projects**

Background (Cont ..)

- **Section 106 of the National Historic Preservation Act**
- **The concurrence of Texas Historical Commission (at Austin) is mandatory**
- **Approval based on LOCATION**
- **Issues in communicating location to the Commission**

The GIS Project

- **Demonstrated how a Geographic Information System could increase efficiency in the business processes**
- **The steps involved in the project are,**
 - **Needs Assessment**
 - **Analysis of work flow**
 - **Creation of a standardized map document**
 - **Installation of a free GIS software**
 - **Training of the employees**

Participating Departments in the Project

- **Community & Children's Environmental Health**
- **Neighborhood Protection Services**
- **Housing and Community Development**
- **Planning Department**

Community & Children's Environmental Health

- **Lead based paint hazard remediation**
 - **Cases are determined for remediation to protect the inhabitants from old paints containing lead**
 - **As the part of the approval process the cases are located on a map**
 - **The map, along with the case file is send to the Texas Historical Commission determines the address does not fall within a designated Historic District boundary**

Neighborhood Protection

- **HPD is responsible for demolition of dangerous buildings (Houston Code of Ordinance)**
- **Buildings older than 1959 requires clearance from the Texas Historical Commission**

Housing and Community Development

- **Construction of Housing Projects**
 - This may involve demolition of existing buildings
- **Building of a new Community Facility**
 - Library or a school
 - Make sure it is not too close to historical buildings
- **The Texas Historical Commission Approves the cases depending on the location**

Planning Department

- **Implementation of Houston HOPE Project**
 - The Mayor's Initiative
 - Buy vacant and delinquent properties
 - Affordable Housing Projects
 - Create better neighborhoods
- **Approval of the cases is based on location**

The Process

- Receive cases (include addresses of applicants)
- **Location of the cases in a paper map**
- Submission of cases to the Texas Historic Commission for approval
- Approval based on the location

The Issues

- How to **locate** cases accurately on a paper map?
- All these processes require showing address accurately on a map
- Display spatial relations
- How to insists that all the departments make maps consistent with a standard one?
- The Texas Historical Commission did not have a standard map for comparison

Locating the Address in the Old Process

- **Using Key Map (marking it manually)**
- **Send the address to the Planning Department to locate**
- **Receive the address on a map in a .jpg format**
- **Scale, legend and contents may vary each time they receive a map**

The Solution

- **Using a GIS**
- **Advantages and disadvantages**
 - **Advantages**
 - Can create an address locator
 - Add or remove custom layers to the map
 - Edit/change the map
 - **Disadvantages**
 - Expensive
 - Requires extensive training
 - Issues involving data maintenance and security



ArcReader is a free desktop mapping application that can deliver interactive mapping capabilities. ArcReader is used to explore and print custom maps from published maps using ArcGIS Publisher extension.

- GIS Deployment
- Map Viewing and Navigation
- Data Query and Exploration
- Map Printing
- Configurable and Customizable

Courtesy: www.esri.com

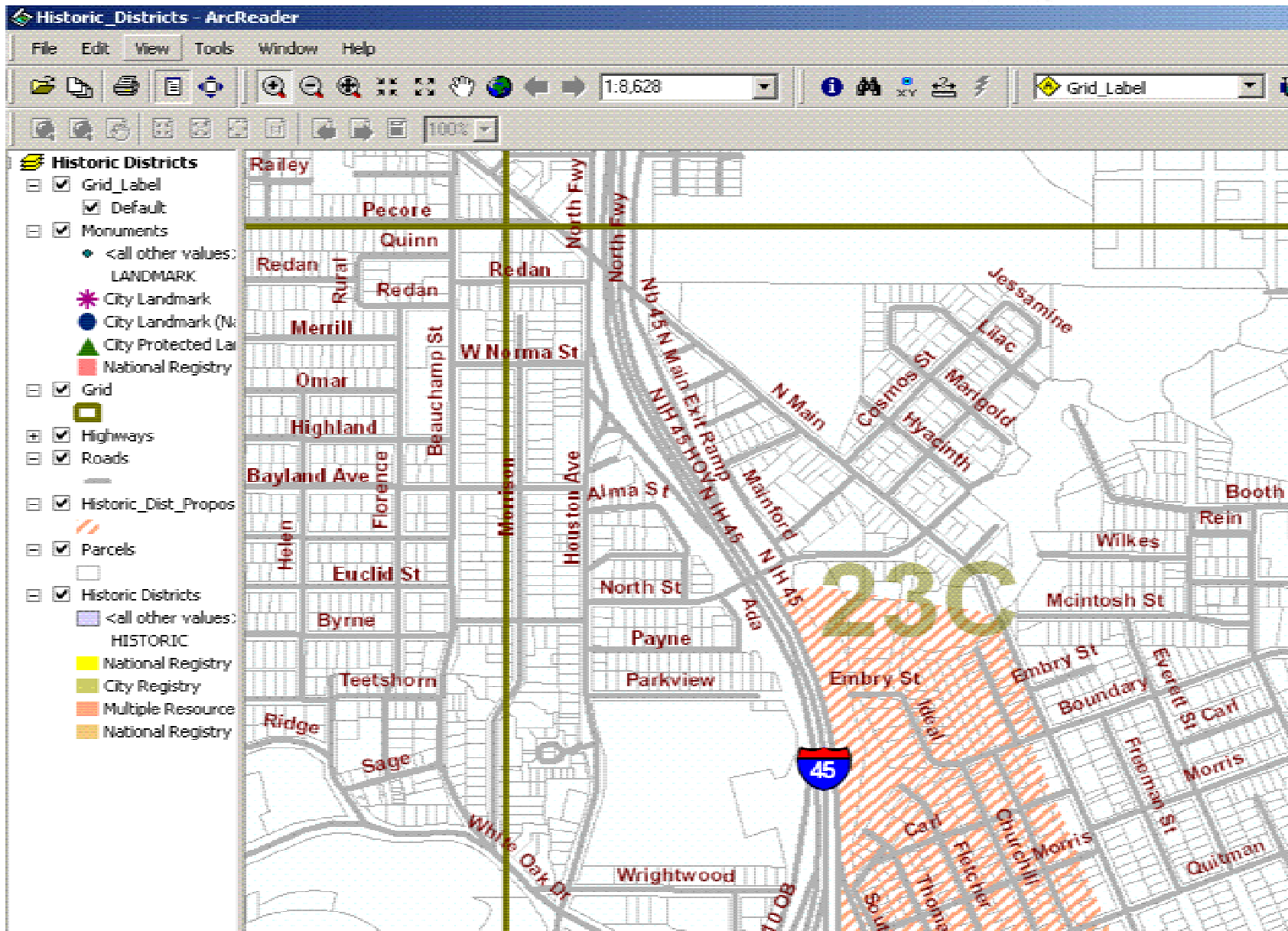
Preparation of Published Map

- **A map document (.mxd) is prepared using ArcGIS 9.2 available at another division with the City**
- **The map is published using ArcGIS Publisher extension as a .pmf document.**

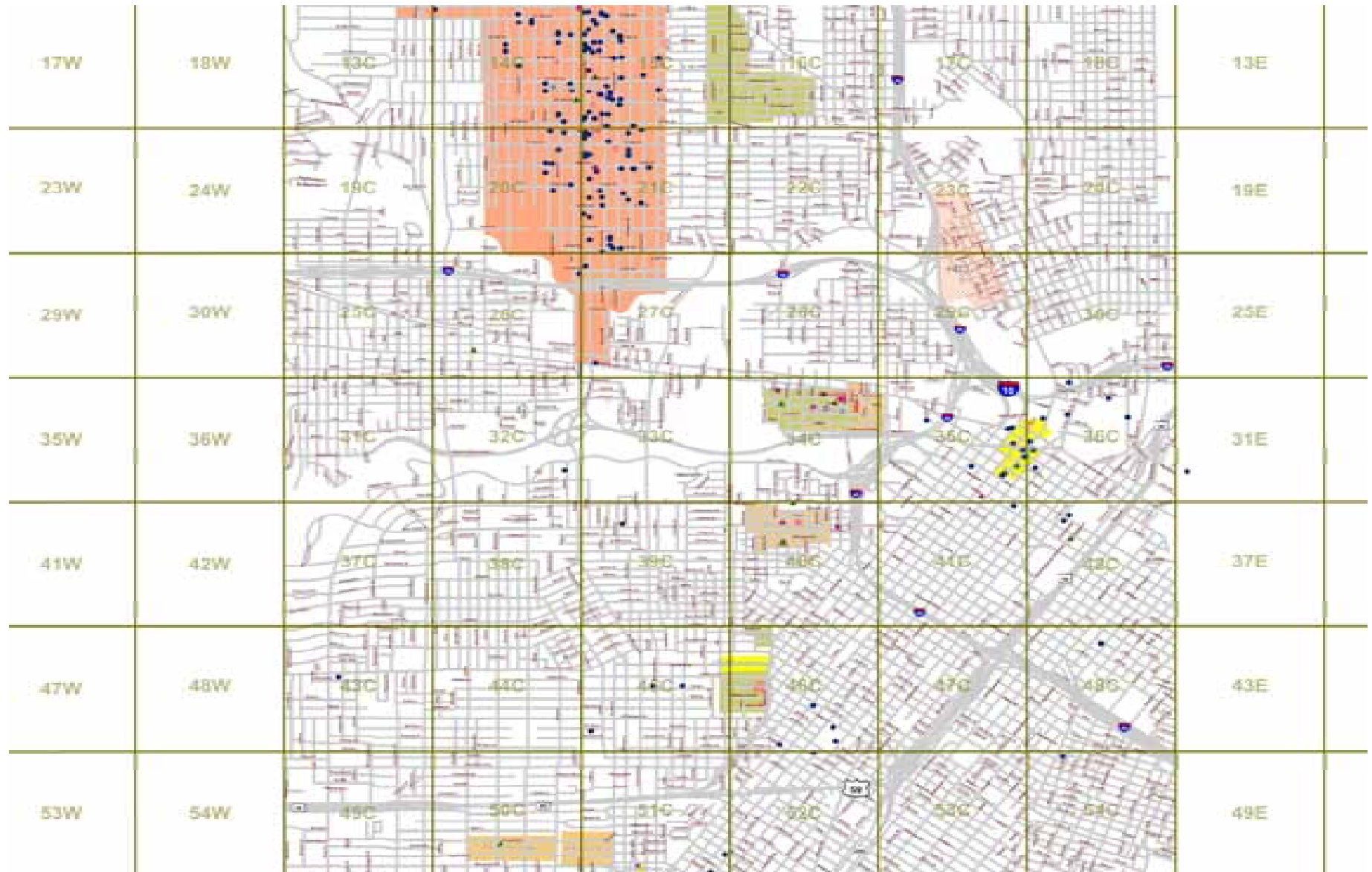
The layers used

- **Parcels**
- **Roads and Highways**
- **Historic Districts in Houston**
- **Historic monuments**
- **Proposed Historic Districts and**
- **A Custom grid**
- **The .pmf document is distributed among the user departments**

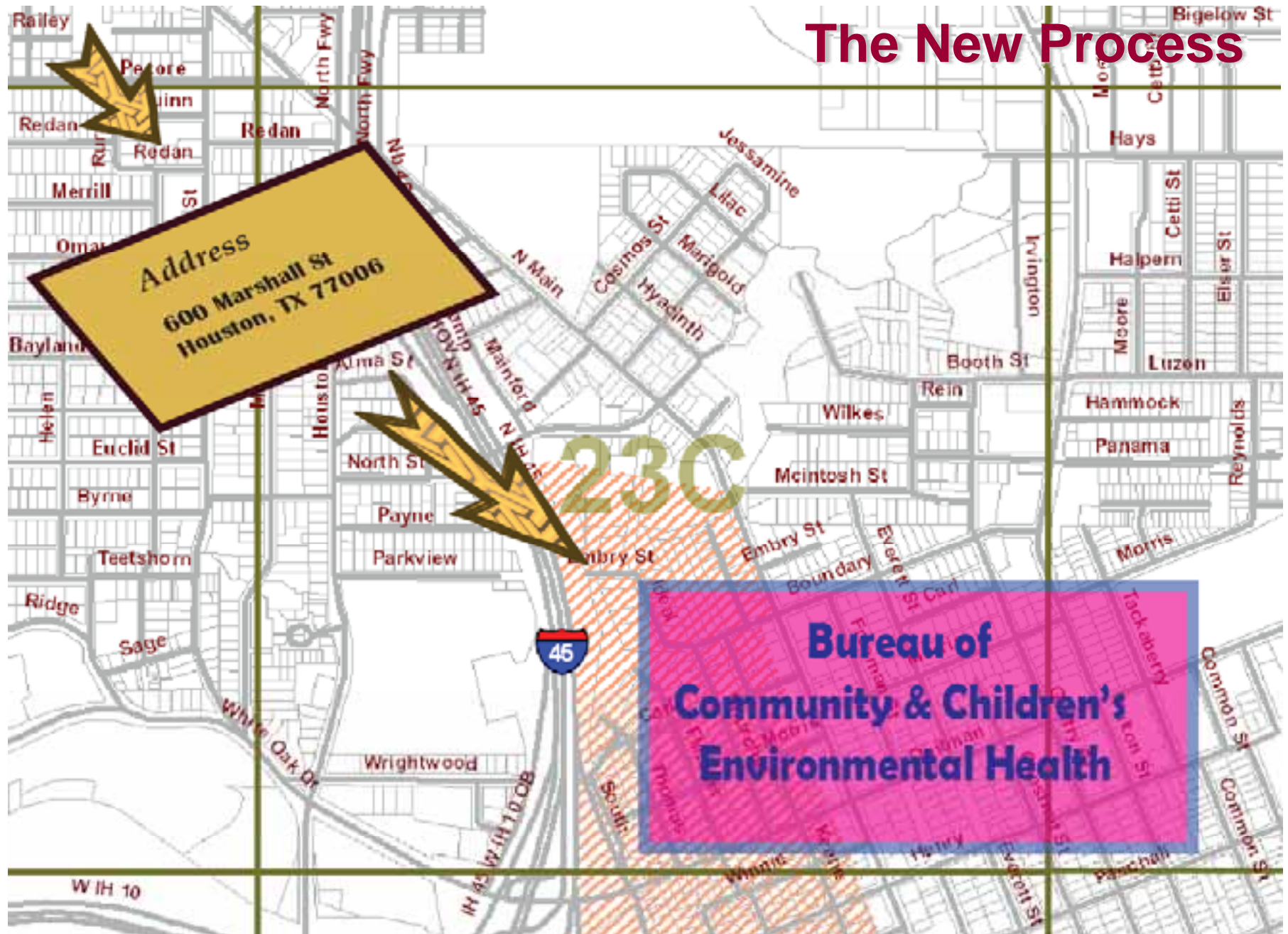
The Published Map (Electronic)

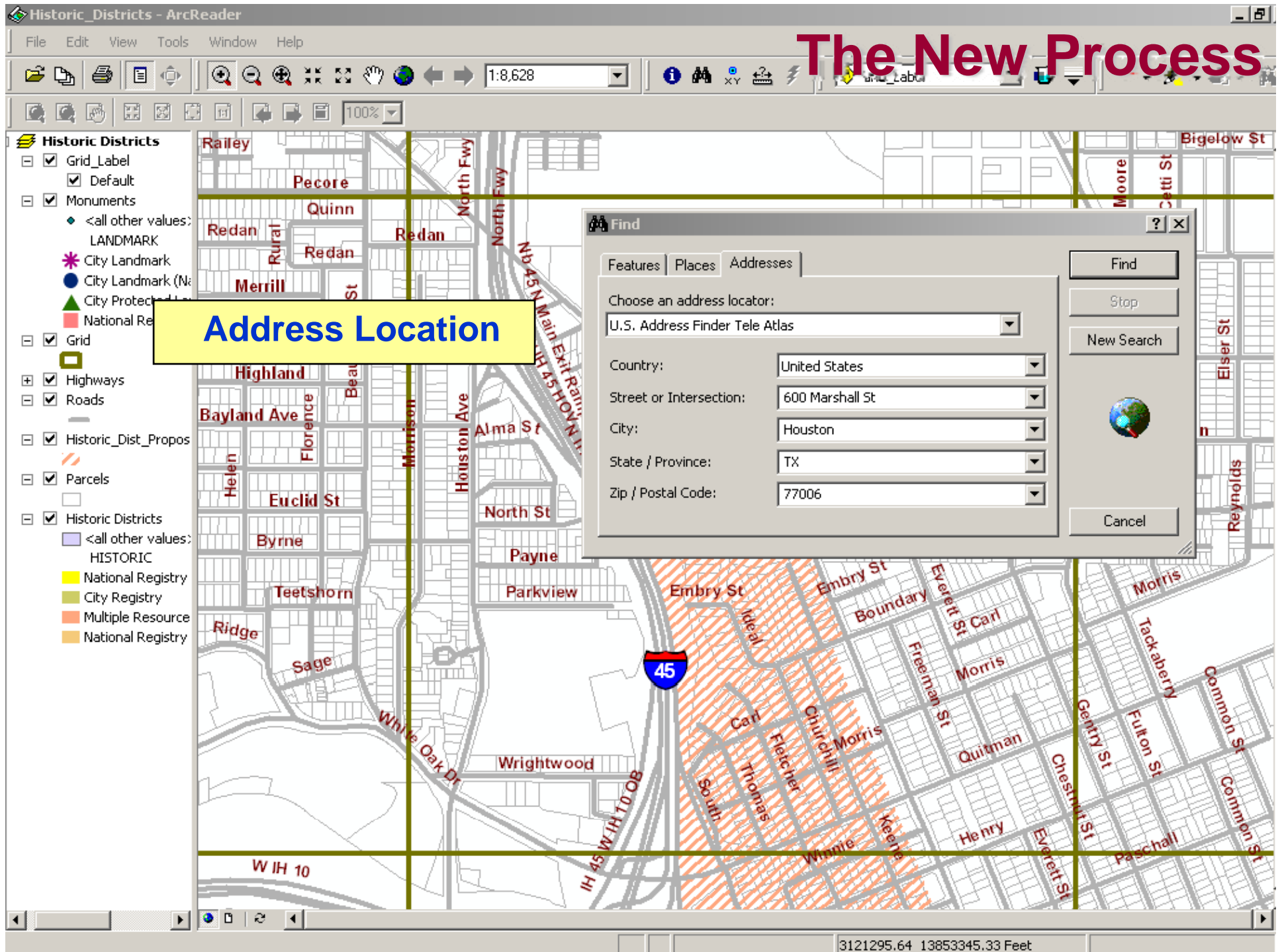


The Map on Paper (Wall Map)



The New Process





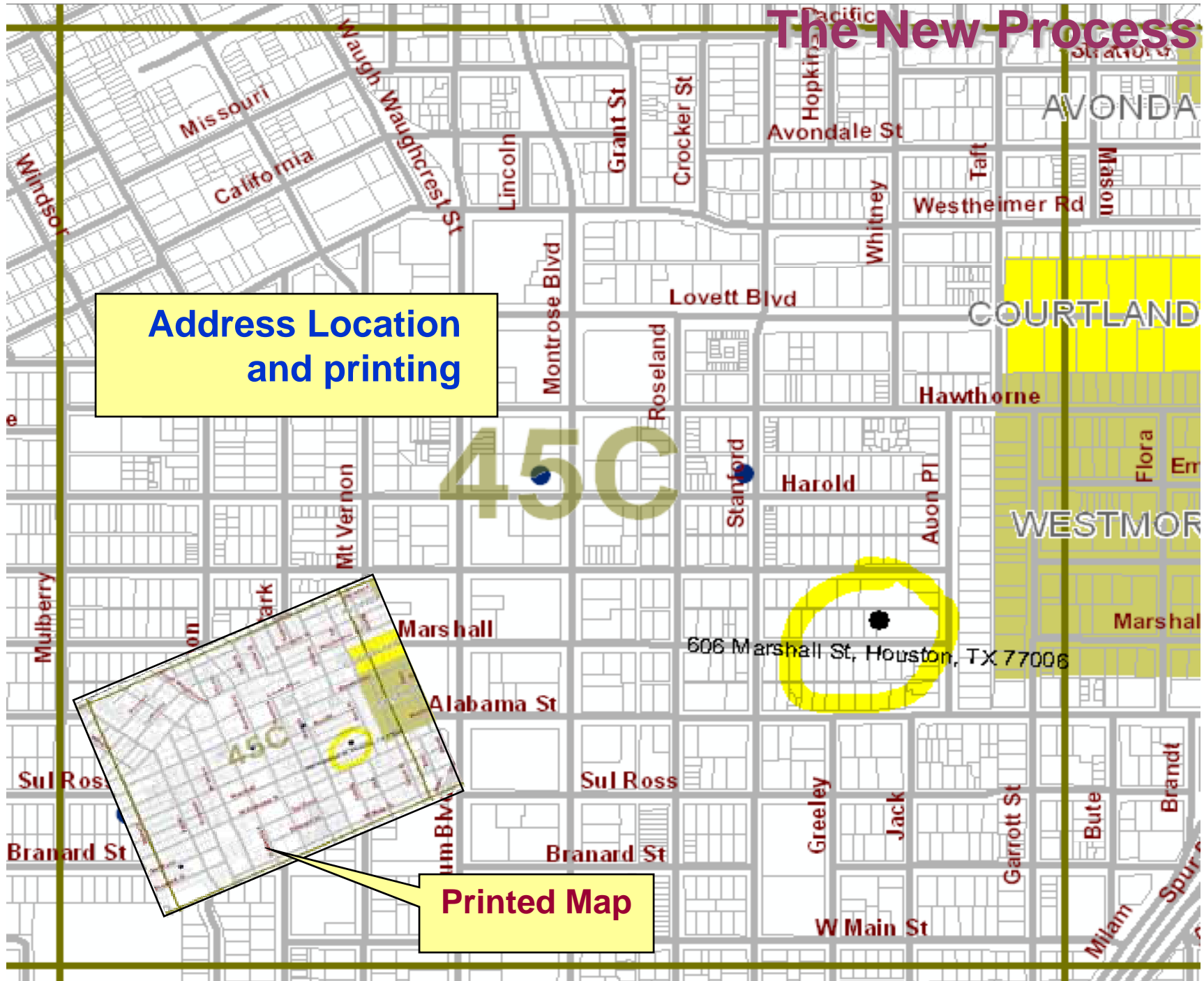
The New Process

Address Location
and printing

45C

606 Marshall St, Houston, TX 77006

Printed Map



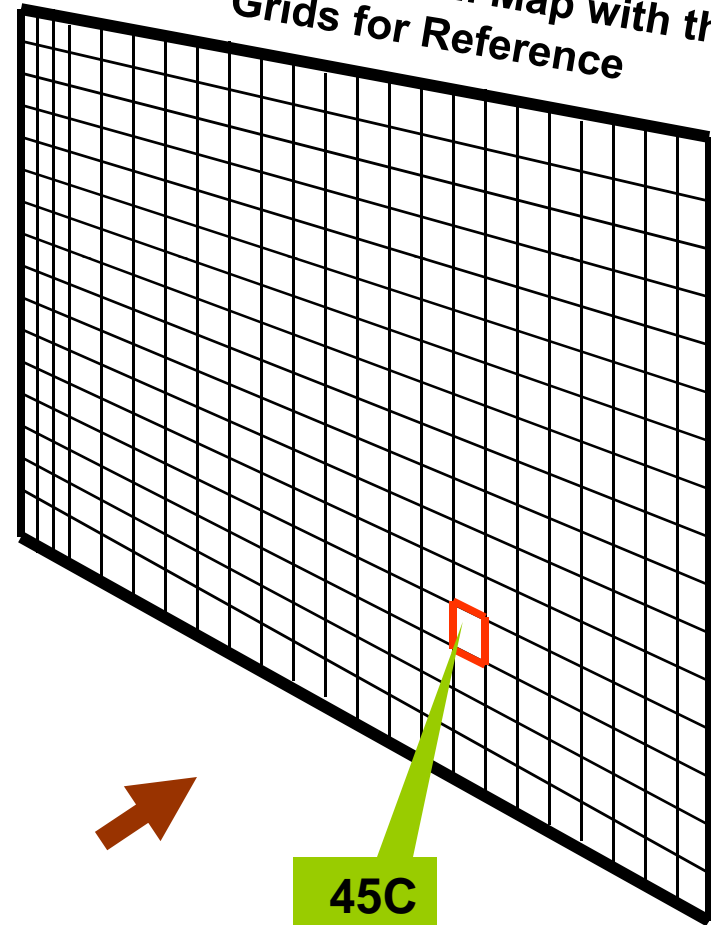
The New Process



Submission to the Commission



*The Standard Wall Map with the
Grids for Reference*



Future Plans

- **The City of Houston is moving towards implementing an Enterprise GIS**
- **Web-based UIs which help search published map document may be made available for all City Departments that has the same kind of location problems**
- **ArcReader can be integrated with the Enterprise Map Printing (EMP) application to make standardized maps to solve location problems**

Acknowledgements

- **Community and Children's Environmental Health, City of Houston, Houston, TX**
- **Community Health Statistics (CHS), Office of Surveillance and Public Health Preparedness, City of Houston, Houston, TX**
- **The Texas Historical Commission, Austin TX**