

The Alabama Resource Management System

ARMS - The GIS Web for Social Services in Alabama



Presented By:
Steve McKinney, PhD
SICS Consultants, LLC





ARMS Timeline

Researching State Social
Services Data

Writing a letter

- Hand written
 - > (Did it myself, but a lot of effort)
- Typewriter
 - > (Ask someone to do it for me)
- Word Processor
 - > (I can do it myself, with very little effort)
- Before ARMS
- ARMS Version 1
- ARMS Version 2
- Next...

ARMS Financial Partners

- ◉ Administrative Office of Courts
- ◉ Dept of Mental Health and Mental Retardation
- ◉ Dept of Human Resources
- ◉ Dept of Education
- ◉ Alabama Department of Economic and Community Affairs
- ◉ Alabama Department of Child Abuse and Neglect Prevention
- ◉ Alabama Department of Children's Affairs
- ◉ Alcoholic Beverage Control Board
- ◉ Office of School Readiness
- ◉ Dept of Youth Services
- ◉ Head Start Collaboration Office
- ◉ ACJIC (in-kind)



ARMS Additional Data Partners

- ◉ Additional Data Partners
- ◉ Voices for Alabama's Children
- ◉ United Way / 211
- ◉ State Health Planning Development Agency
- ◉ Dept of Rehabilitation Services
- ◉ Governor's Task Force to Strengthen Families
- ◉ Dept of Industrial Relations
- ◉ Department of Public Health



Partners Sharing Data

(available)

Transportation

DYS

United Way

Library

Court

Attorney General

DHR

Children's Affairs

211

CPC

FRC

Mental Health

(available)

Public Health

Church

Public Safety

Schools

Medicaid

Public Info

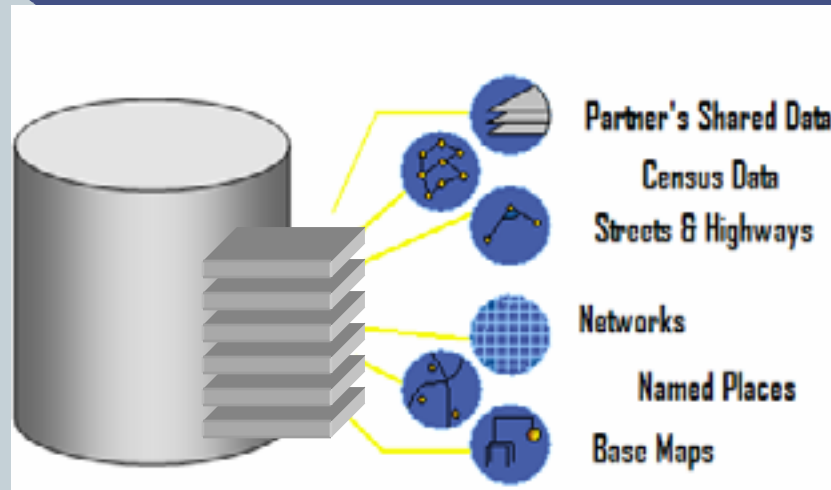
ADECA

Multi-Needs

ABC

CTF

ARMS Database



Rehabilitation Services



Project Consideration

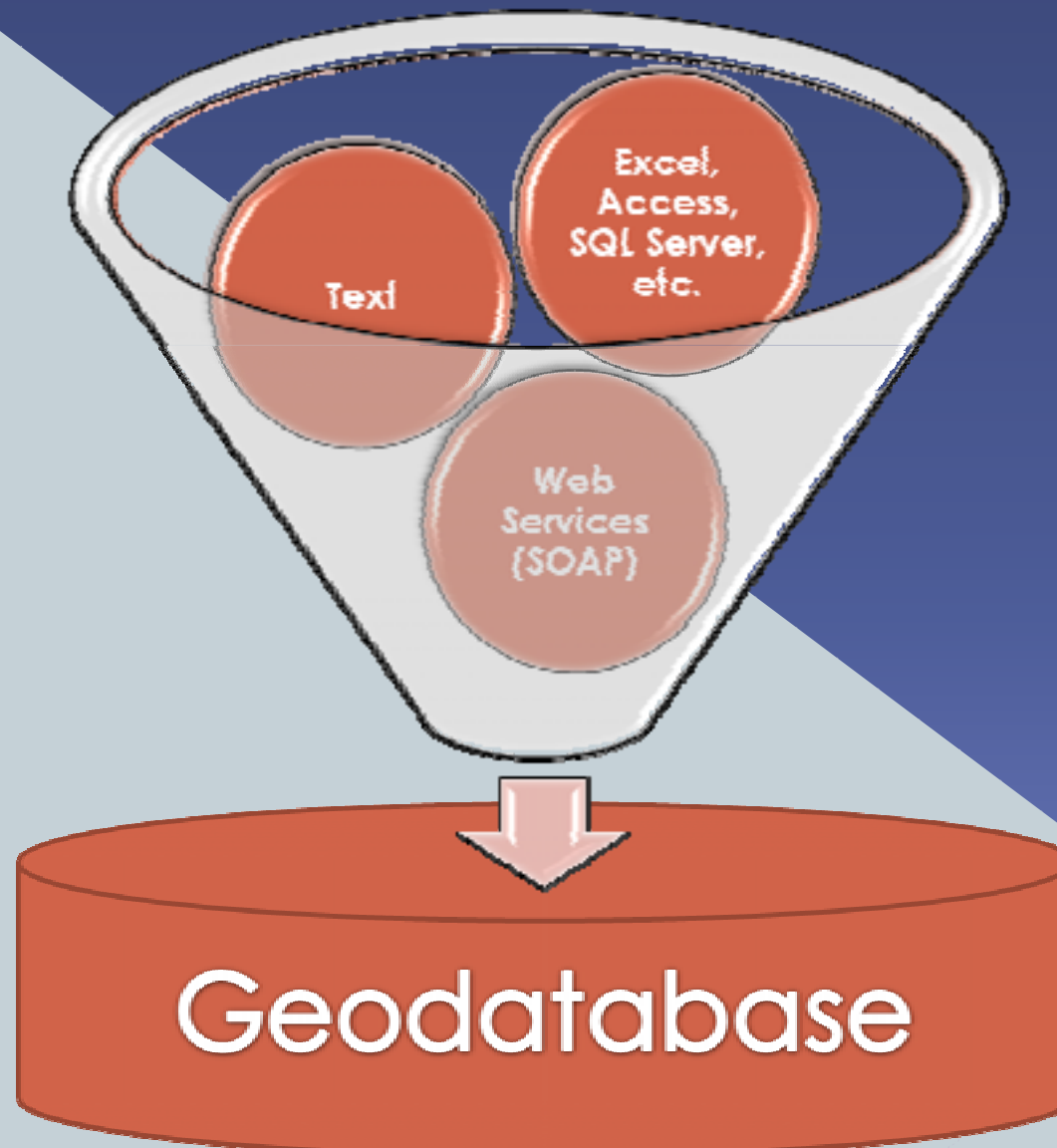
Goals

- To consolidate varying sources of health and social services data from State and non-for-profit organizations into a single location
- To present client-side, desktop levels of functionality to users through a web environment

Conditions

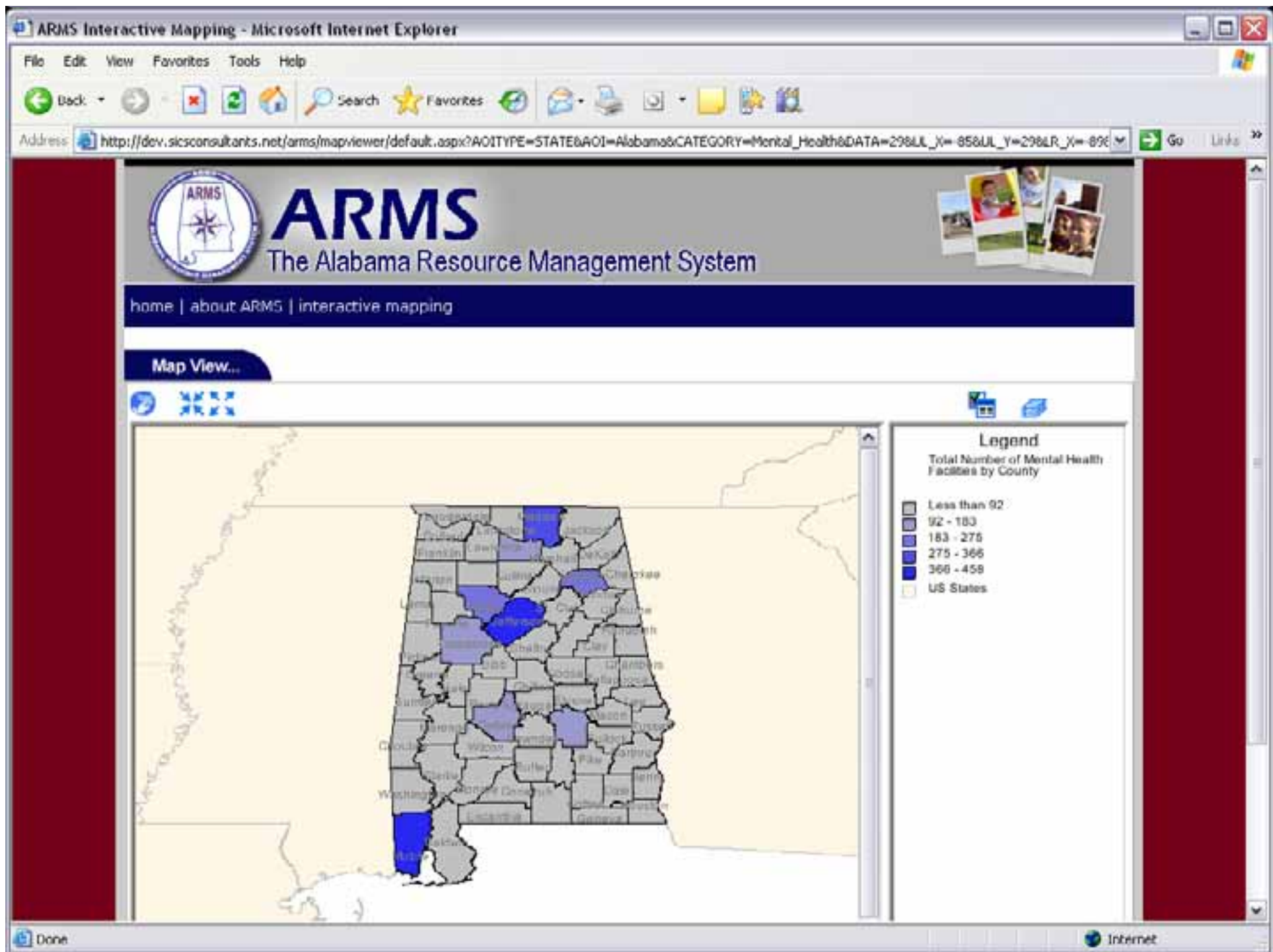
- There are **NO INTERNAL SUPPORT STAFF AVAILABLE**
- Information must be presented in a manner that users require **NO FAMILIARIZATION WITH GIS**

Source Data

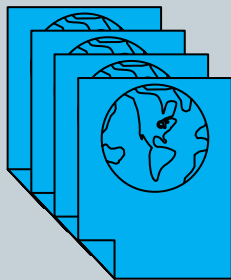
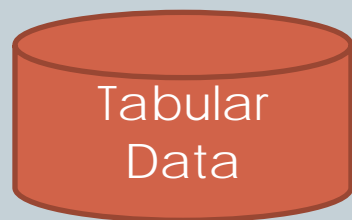


ARMS Version 1

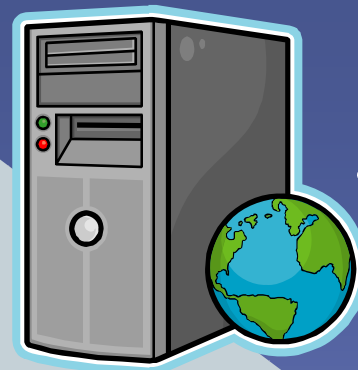
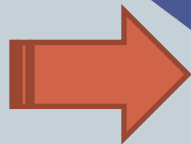




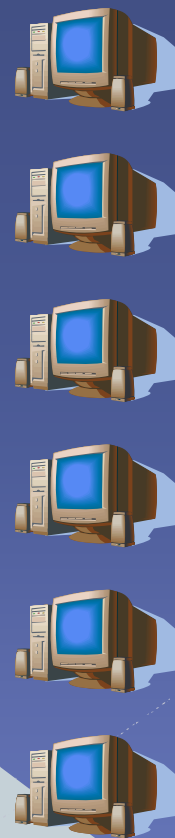
ARMS Version 1



Shapefiles



ArcIMS v9.1





Version 1 Strengths and Weaknesses

Weaknesses

- Multiple steps
- Slow response times
- Difficult to manage and input data

Strengths

- Based on existing model
- Established technology
- Simplistic server-side interfaces

ARMS Version 2





Online Help

- Chapter 1 - The Mapping Application
 - Choose It Map It
 - The Tool Bar
 - The Results Window
 - The Map Contents Window
 - The Navigation Window
 - The Map Overview Window
 - The Map
 - The Distance Scale
- Chapter 2 - The Reports Application
- Chapter 3 - The Resources Application
- Chapter 4 - Help

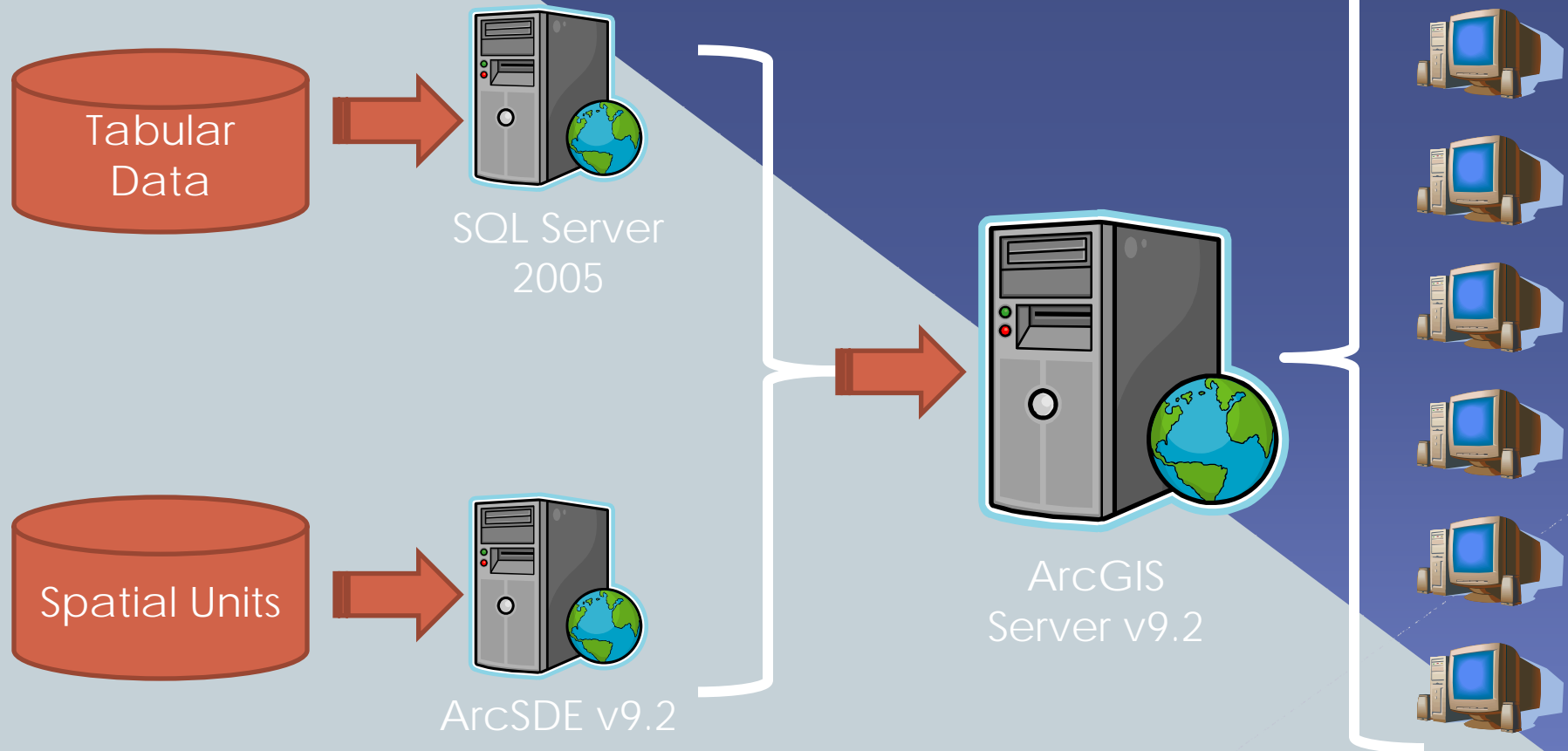
1.6 The Map Overview Window

The Results window is located on the left side of the screen. Click on the down arrow to expand the window and click on the up arrow to collapse the window. Click on the right arrows to float the window on the map. You can click, hold and drag a floating window anywhere within the web window to optimize your viewing area. Re-dock the window with a single click on the left arrows.



The translucent box with cross hairs defines the actual area of the map that will be in view on the larger map. You can left click on any point in Alabama and the map will reposition to center on the point, or you can left click, hold and drag the translucent box to cover and center on the point you wish to see. It is just one way to reposition the large map to optimally view a particular area with less mouse movement. An example would be: You have zoomed in on Montgomery County and now wish to see Jefferson County. You don't want to manually zoom out to locate Montgomery County then zoom back in again. One click in the Map Overview on Jefferson County will reposition the map to Jefferson on the same zoom level as you were viewing Montgomery County. You can also drag the translucent box to center on Jefferson County.

ARMS Version 2



General User Functionality

- Existing

- › Spatial, demographic, and statistical data browsing
- › Report viewing and exporting
- › Basic mapping (i.e. visual analysis, measurements, coordinates, overlays, feature identification, etc.)



General User Functionality

● Future

- Custom map production (i.e. PDF, JPEG, etc)
- Custom Reports (i.e. grants, annual reporting, etc)
- Spatial Summary Tools
- Attribute Query Tools





Version 2 Strengths and Weaknesses

Strengths

- Few steps
- Robust architecture
- Simplistic server-side interfaces

Weaknesses

- Evolving data model
- New technology
- Hardware dependencies

ARMS v1 vs. v2 Comparison

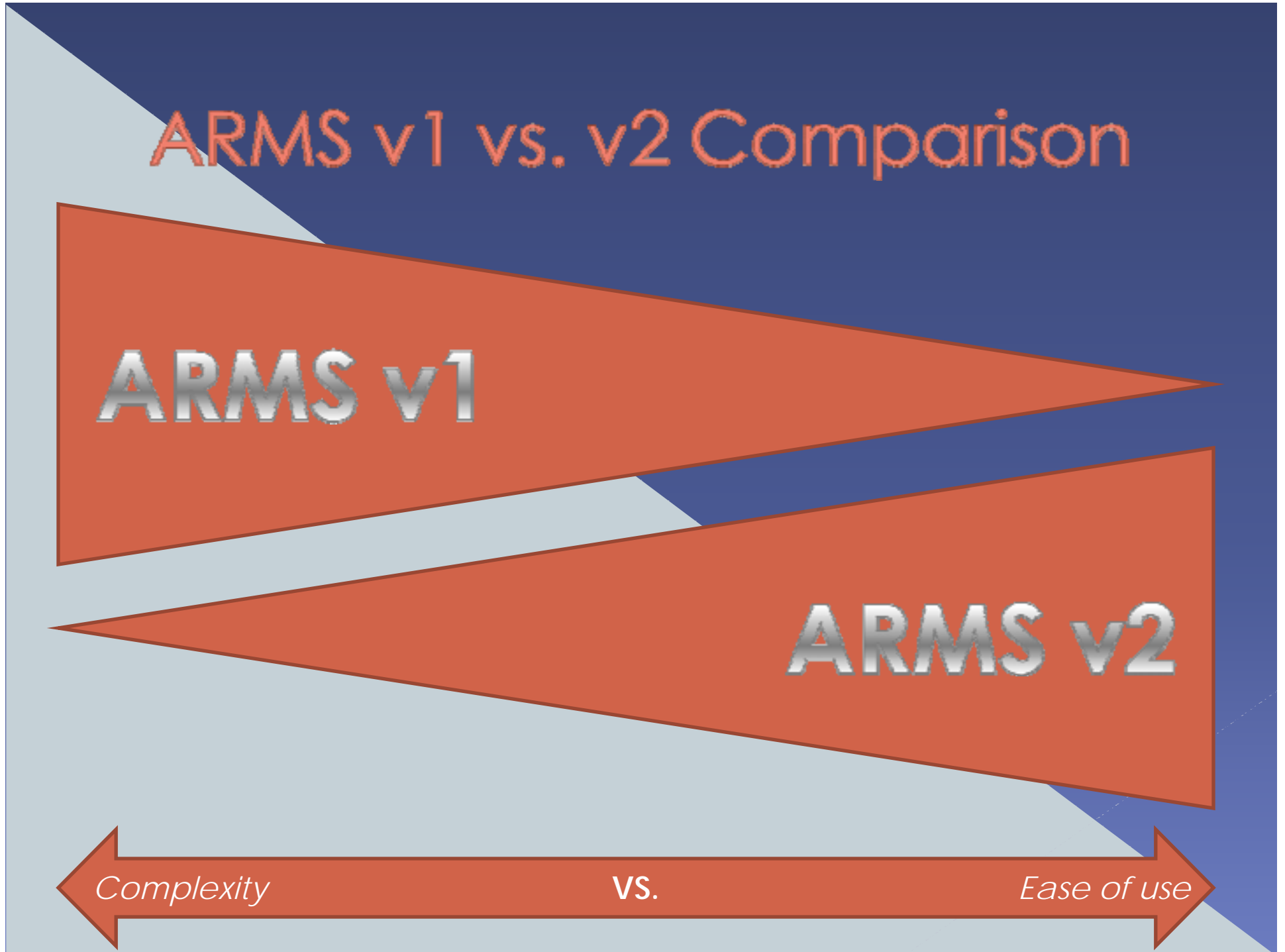
ARMS v1

ARMS v2

Complexity

VS.

Ease of use



Problems Summary

1. Variation and lack of standards in data
2. Presentation of data in a digestible state



Power User Functionality

(* Future)

- ◉ Google – Virtual Alabama
- ◉ Microsoft – VirtualEarth *
- ◉ ESRI
 - > ArcGIS Desktop
 - > ArcGIS Explorer



Future Work

- ◉ Data Management Process and Application Development
- ◉ Mapping and Reporting Administrative Process and Application Development
- ◉ Functionality Enhancement
- ◉ Job submission for advanced analysis
- ◉ User profile and work storage development
- ◉ User feedback input



For More Information:

Steve McKinney, PhD
SICS Consultants, LLC
steve@sicsconsultants.com

<http://www.sicsconsultants.com/>
<http://gisinnovations.blogspot.com>

<http://arms.alabama.gov>

