



GIS in State and Local Health Departments

Moderated Exchange Session

2008 Health GIS Conference

Moderated Exchange Session

Agenda

- Health GIS User Group activities
- GIS solution patterns in State Health Departments
- Local Health Department perspectives
 - Michael Caldwell, MD, MPH, Commissioner
 - » Dutchess County Department of Health, NY
- Group discussion on GIS trends in S&LHDs

ESRI Health User Group (The HUG)

www.esri.com/hug

- Listserv for 1,000+ health professionals worldwide
- Recent group inquiries include:
 - GIS and Tuberculosis
 - GIS and Diabetes/Obesity
 - GIS and Disparities
 - GIS and Veterinary Public Health
 - GIS and Drinking Water
 - Mobile GIS applications
 - several methodology questions

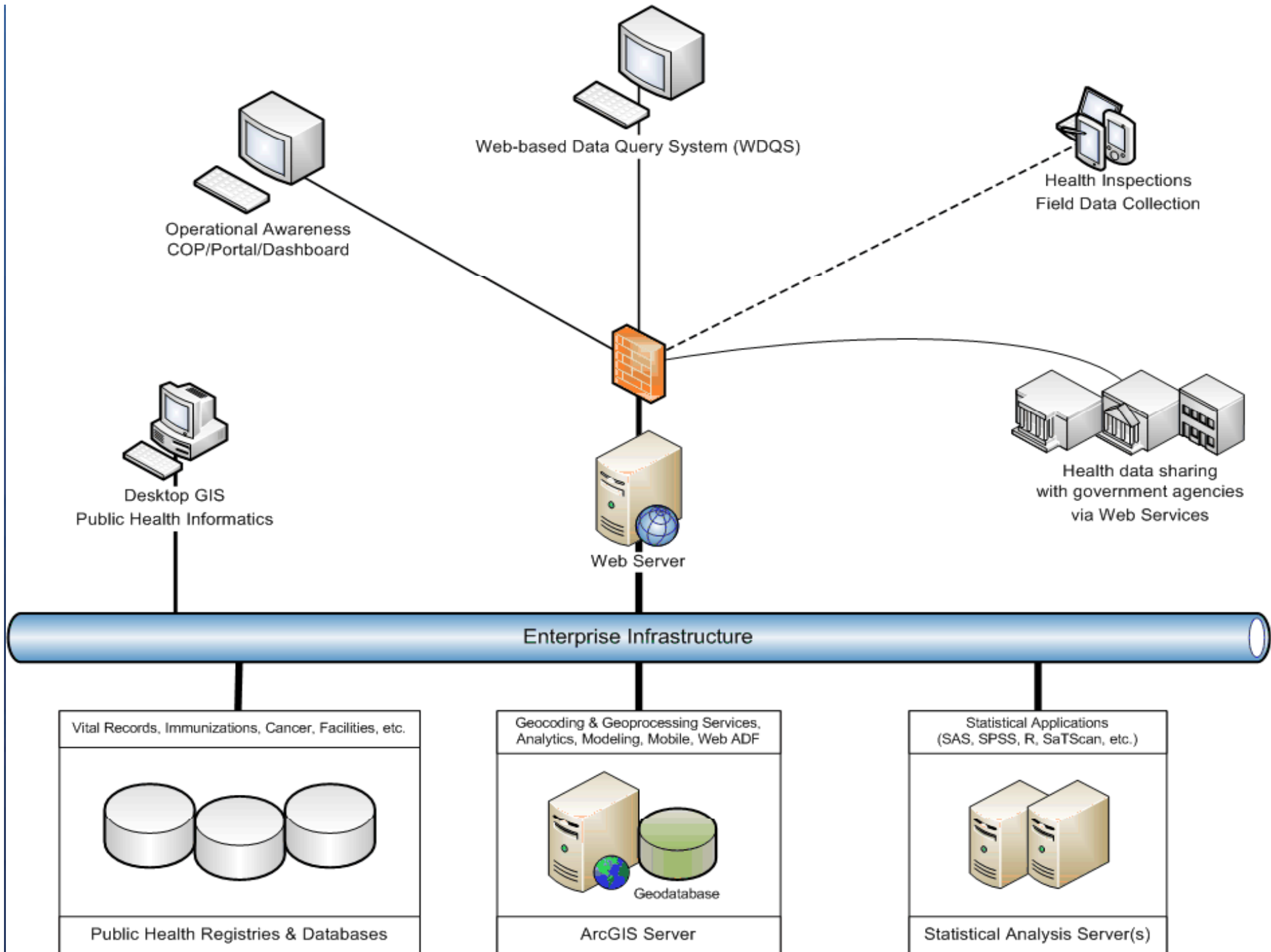
ESRI Health User Group (The HUG)

Networking activities for sub-segments such as:

- **State & Local Health Department GIS coordinators**
 - LHD GIS coordinators – 2 conference calls, 1 webinar
 - SHD GIS coordinators – 1 conference call
 - S&LHD GIS coordinators – combined webinar (training options)
 - Next scheduled webinar topic – ArcGIS Extensions
- **Asthma GIS workgroup (meeting this week)**
- ***Other sub-segments of the HUG? Topical?***
- ***Other “organizational” resources?***
 - Conference phone lines, forum pages, wikis, etc.

GIS solutions in Health Departments

- **Assessment**
 - Enterprise geocoding
 - Desktop GIS analysis / informatics
- **Policy Development**
 - Web-based Data Query Systems
- **Assurance**
 - Field data collection / inspections
- **Operational Awareness**
 - Common Operating Picture (COP)
 - Executive dashboard / portal



Moderated Exchange Session

- GIS trends in Local Health Departments
- LHD leadership perspectives on GIS

Moderated Exchange Session

Introductions and discussion:

- Name
- Organization
- Role / GIS use
- What work is being supported with GIS?
- What challenges are presented from GIS?