



Using Web-Based Mapping for Dental Service Placement in a Multi-site CHC System

Mark Carrozza
Health Foundation of Greater Cincinnati

Shannon Nielson
HealthSource of Ohio



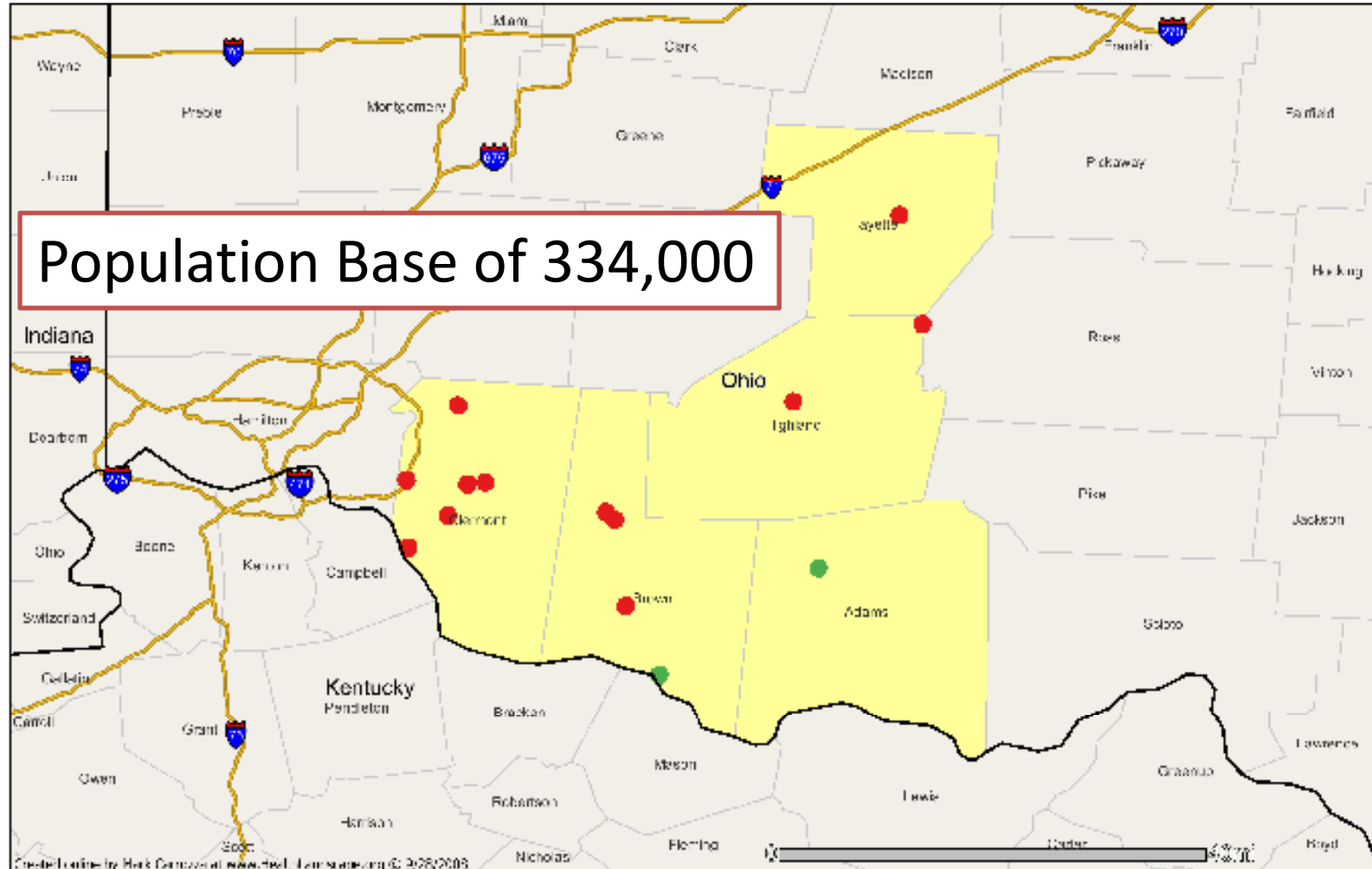
Introduction

- Two questions:
 - HealthSource:
 - Where to place a dental facility in rural southern Ohio?
 - Health Foundation:
 - How can we improve HealthLandscape as a decision making tool?

About HealthSource of Ohio

- Private, not-for-profit Federally Qualified Community Health Center (FQHC)
- Serves five Appalachian counties: Adams, Brown, Clermont, Highland and Fayette
- Fourteen offices throughout the service area
- Services include: Family Practice, Internal Medicine, Pediatrics, Ob/Gyn, Psychiatry, Mental Health, **Dentistry**, Pharmacy
- Employs physicians, dentists, licensed independent social workers, nurse practitioners, physician assistants and hygienists
- Payer mix includes: Medicaid, Medicare, Private Insurance and Managed Care as well as uninsured and underinsured
- In 2007, HealthSource treated 52,514 patients with 221,037 visits
- Governed by a Community-based Board of Trustees
- Continually strives to provide quality, cost-effective primary care (including **dentistry**) to the residents of southern Ohio

HealthSource of Ohio Facilities





The Health Foundation of Greater Cincinnati

about us

community input

upcoming events

news

grantmaking interests

application guidelines

RFPs

grants

local data

non-profit resources

publications

FAO

Online Marketing

How do you bring more people to your web site? How do you keep them coming back? How can you use your web site to raise money and develop new relationships? In this interactive program, attendees will learn how to use advanced online tools to increase communication and fundraising and to provide services such as blogs, bulletin boards, podcasts, e-newsletters, and more...

Technical Specialist

The Health Foundation of Greater Cincinnati invites applicants for the position of Technical Specialist. The Technical Specialist is responsible for providing operational support for HealthLandscape. This includes direct user support (system access, use, and billing) via email, telephone, and video conferencing. The person also assists in the acquisition, archiving, and dissemination of health and social welfare

ACCESS TO CARE: Mahoning Valley, Ohio, Summit Addresses Efforts To Help Uninsured, Underinsured Residents

Approximately 100 representatives from Mahoning Valley, Ohio, area governments, community groups and health care providers on Sept. 5 attended the first Mahoning Valley Access to Care Network health care summit to discuss efforts to help uninsured and underinsured

Graham Center - The Robert Graham Center - Windows Internet Explorer

http://www.graham-center.org/

Robert Graham Center

Graham Center - The Robert Graham Center

The Robert Graham Center
policy studies in family medicine and primary care

bringing a family practice and primary care perspective to health policy deliberations in Washington

ABOUT US PUBLICATIONS DATA TABLES MAPS INTERNSHIP/FELLOWSHIP NEWS RELEASES CONTACT US HOME

The Robert Graham Center exists to improve individual and population health by enhancing the delivery of primary care. The Center aims to achieve this mission through the generation or synthesis of evidence that brings a family medicine and primary care perspective to health policy deliberations from the local to international levels.

The themes guiding the work of the Graham Center are:

- [The Value of Primary Care](#)
- [Health Access and Equity](#)
- [Delivery and Scope of the Medical Home](#)
- [Healthcare Quality and Safety](#)

WHAT'S NEW

[Access Transformed: Building a Primary Care Workforce for the 21st Century](#) (NACHC Website, August 11, 2008) - A landmark report on the workforce needed to care for America's underserved.

[Will Patients Find Diversity in the Medical Home?](#) (July 2008) - One-Pager

[A Perfect Storm: Changes Impacting Medicare Threaten Primary Care Access in Underserved Areas](#) (June 2008) - One-Pager

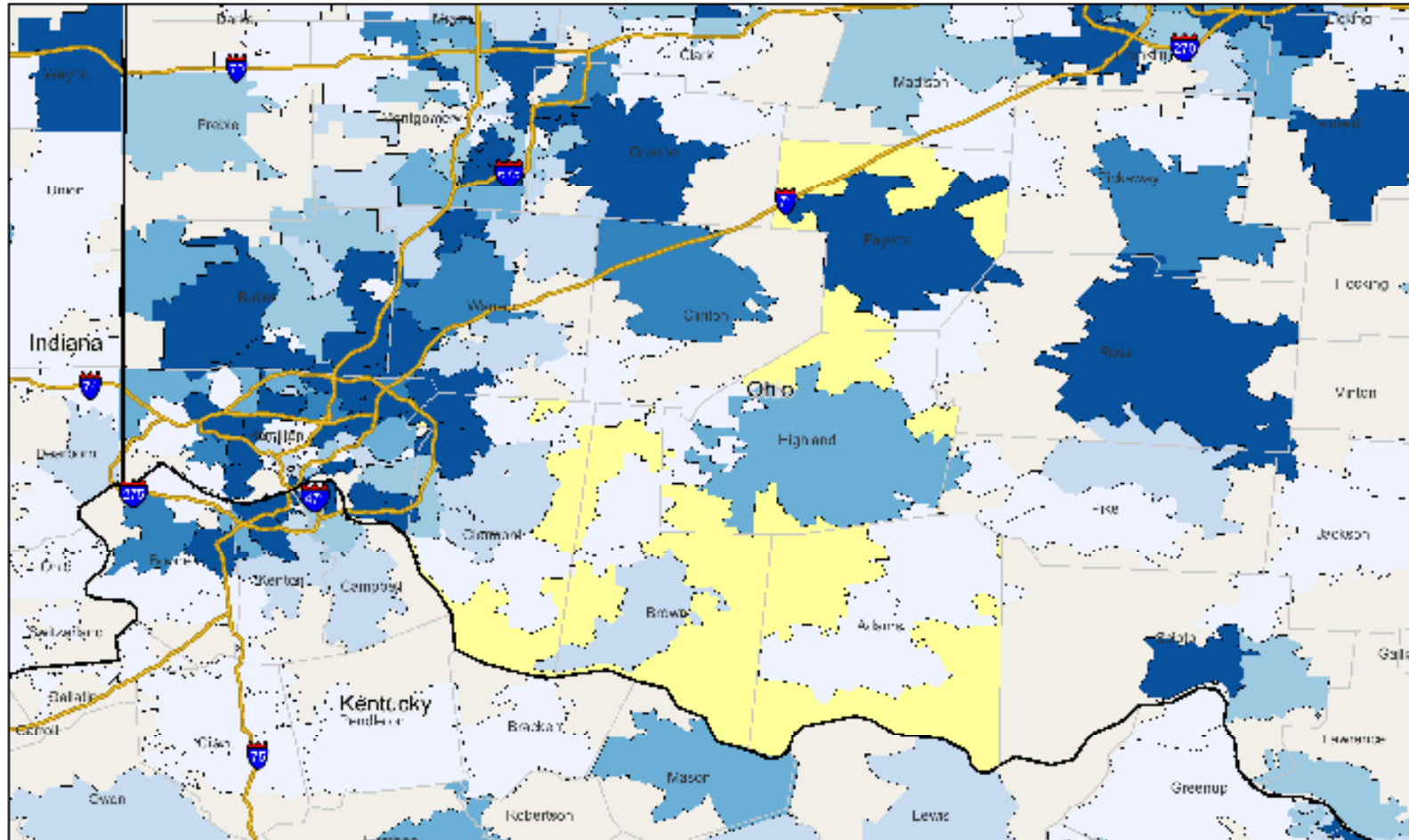
Try our new online mapping site - [HealthLandscape.org](#)

The Robert Graham Center, Policy Studies in Family Medicine and Primary Care, 1350 Connecticut Avenue, NW Suite 201, Washington, DC 20036
Phone: 202-331-3360, Fax: 202-331-3374, E-mail: info@rghc.org

Copyright © 2008 [The American Academy of Family Physicians](#)
The information and opinions contained in research from the Graham Center do not necessarily reflect the views or policy of the AAFP.

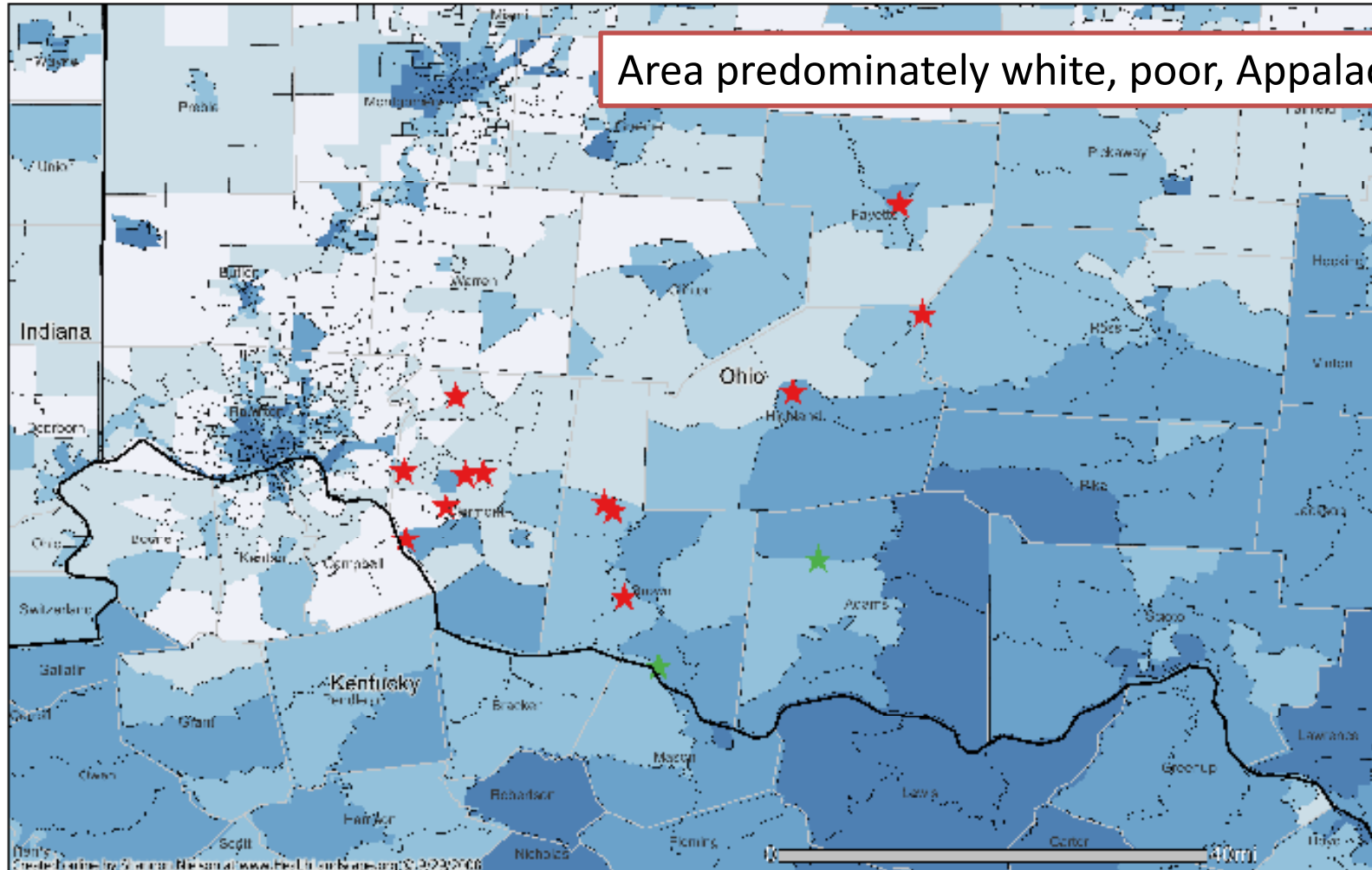
Internet 100%

Dental Offices by ZIP Code, 2006

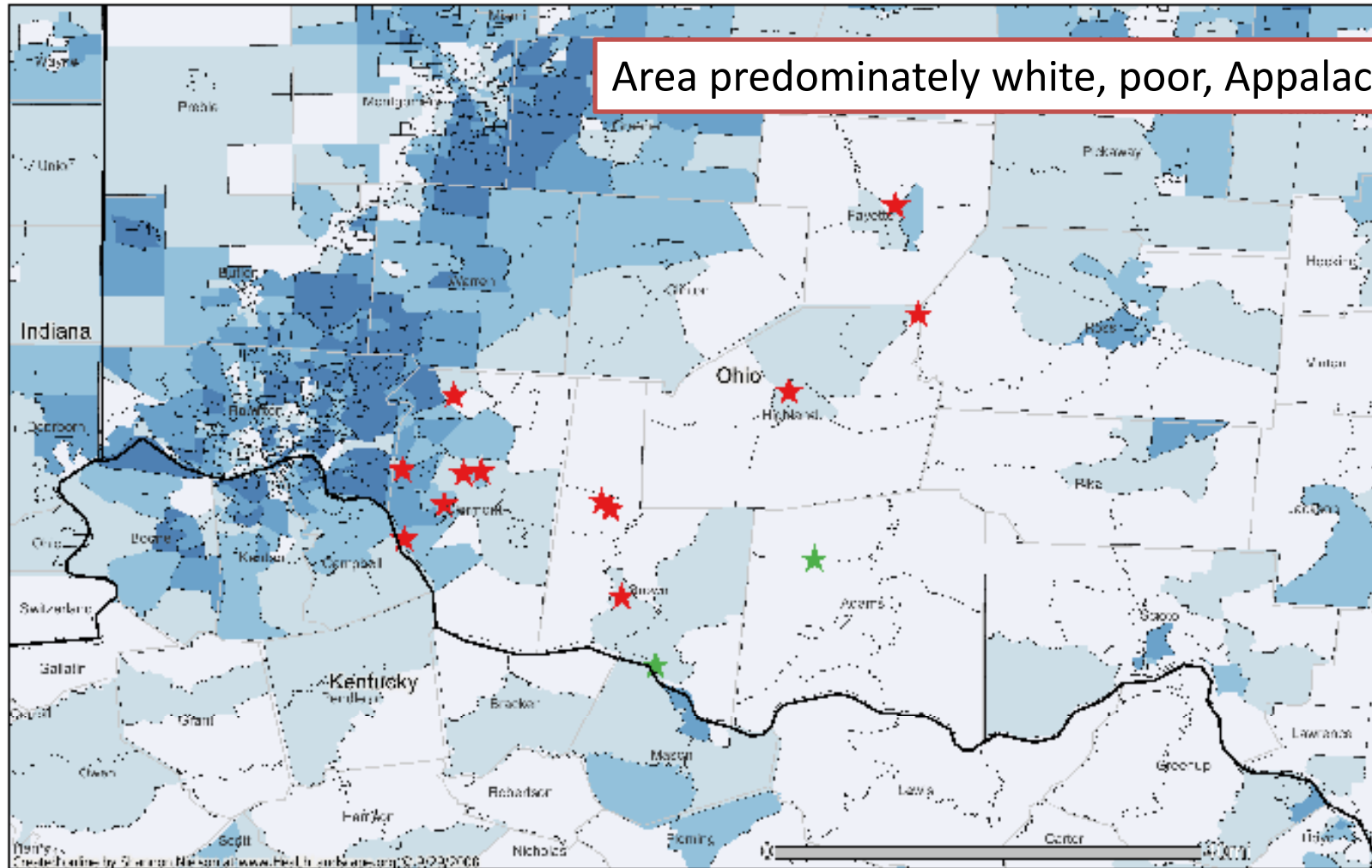


Private dental clinics provide services to few or no Medicaid patients

% Population Below Poverty

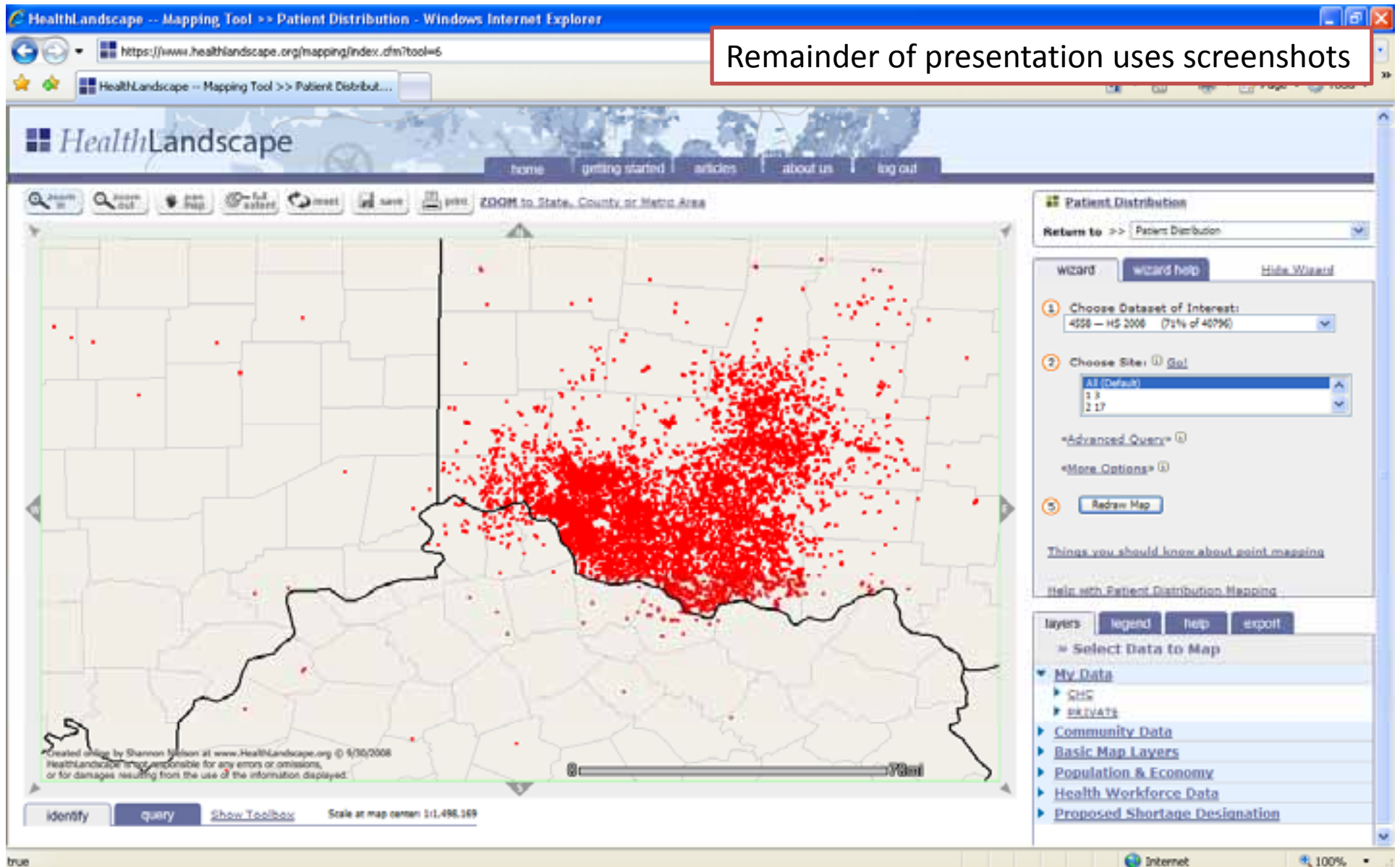


% Population with 4+ Years College

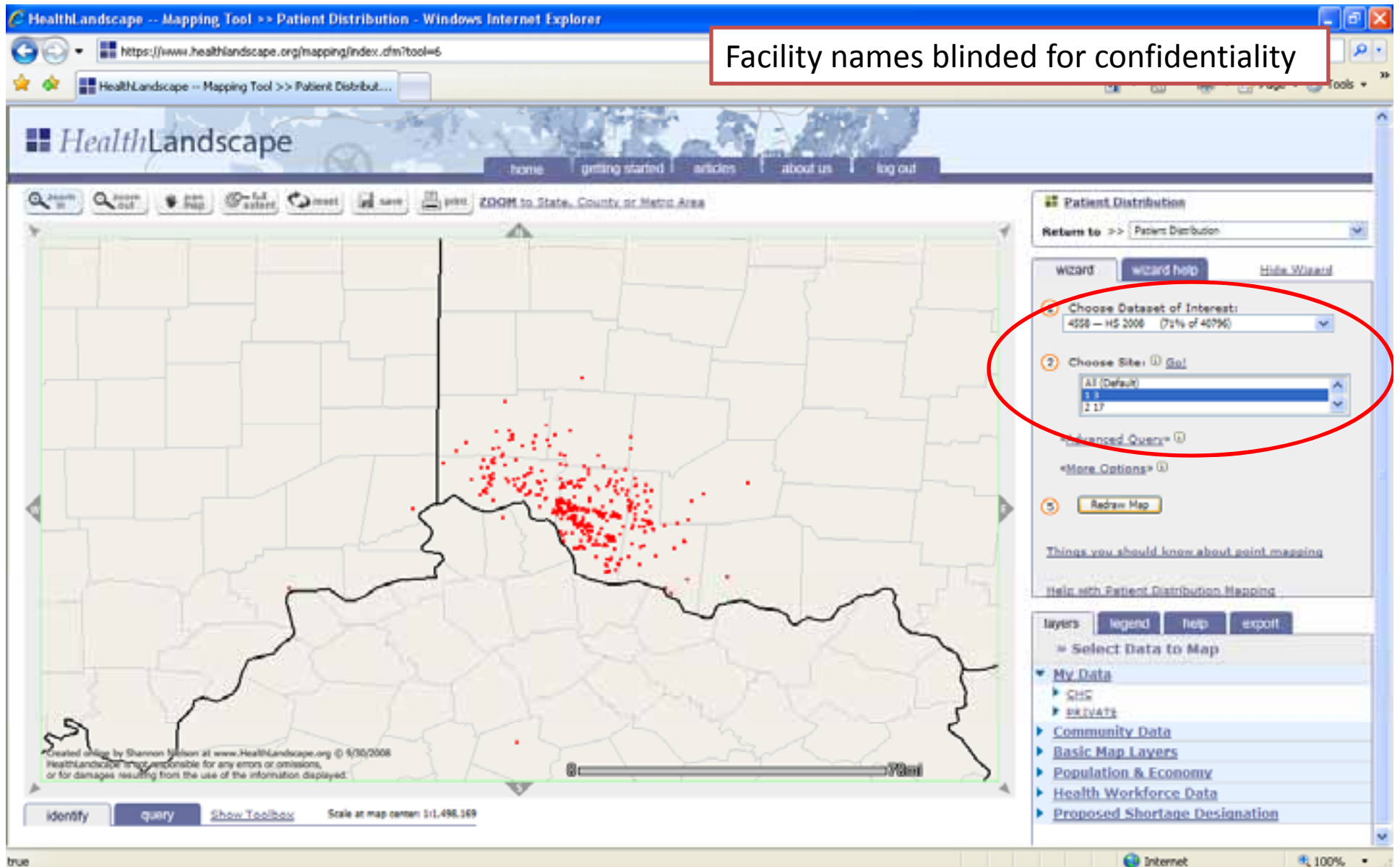


Patient Distribution, 2008 – 40,579 patients in 2008, through July

Remainder of presentation uses screenshots

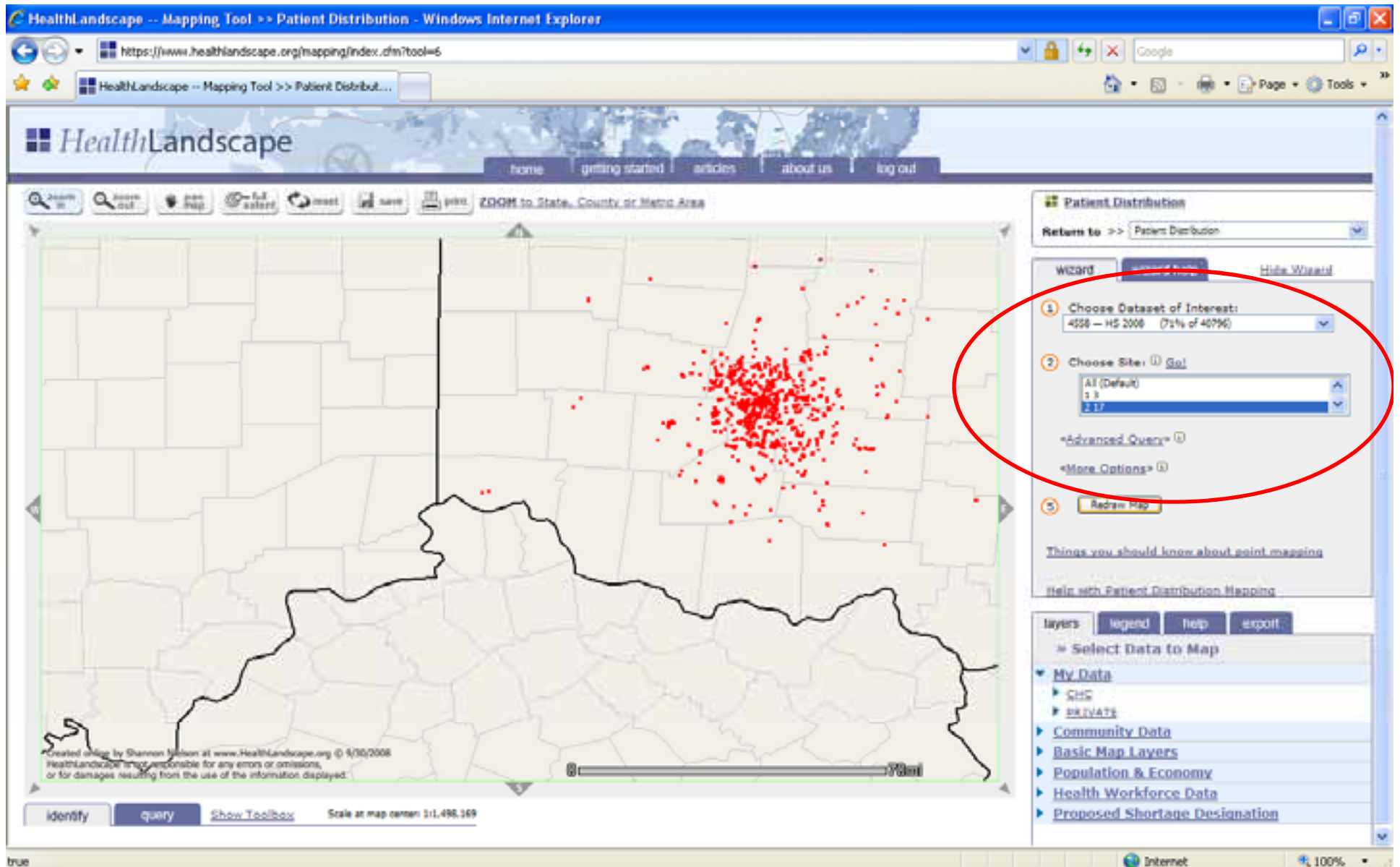


Patient Distribution, Facility 3

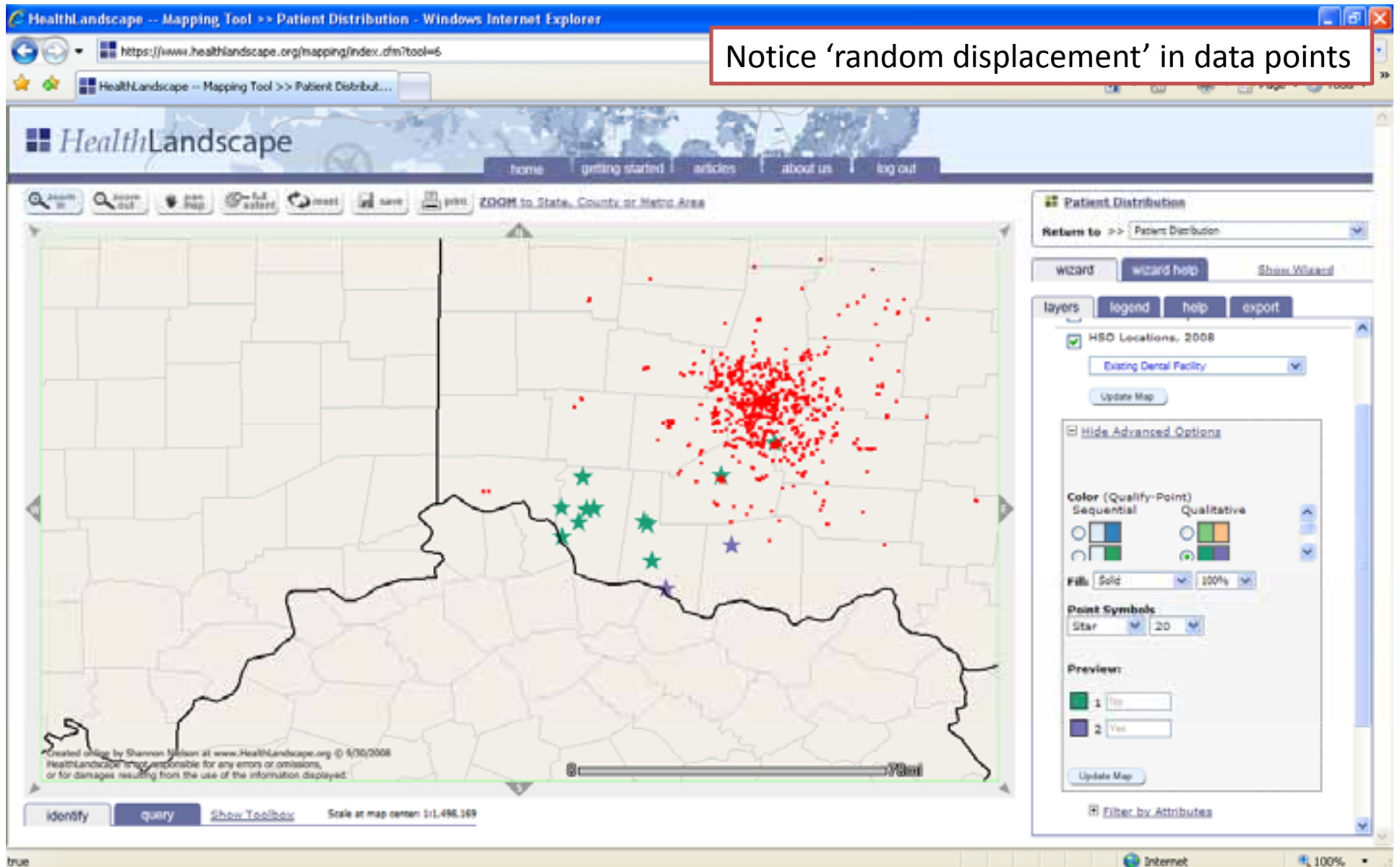


Facility names blinded for confidentiality

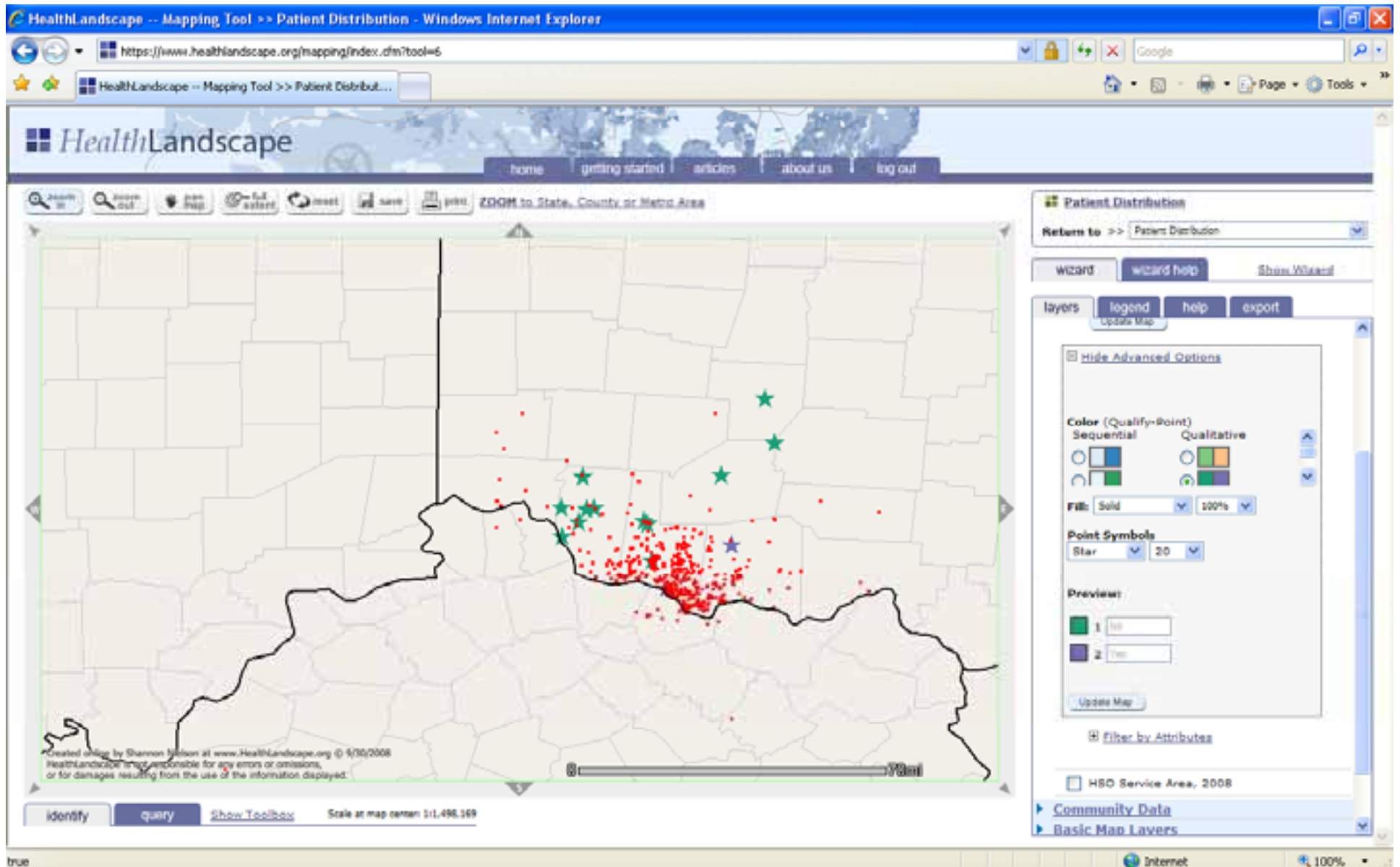
Patient Distribution, Facility 17



Patient Distribution, Facility 17 with CHC Locations



Patient Distribution, Facility 12 with CHC Locations



Service Area, Facility 12

The screenshot displays the HealthLandscape Mapping Tool interface in a Windows Internet Explorer browser. The browser's address bar shows the URL <https://www.healthlandscape.org/mapping/index.dfm?tool=6>. The page title is "HealthLandscape -- Mapping Tool >> Patient Distribution".

The main map area shows a geographical region with a grid of county boundaries. A specific area in the lower-right quadrant is highlighted with a blue hatched pattern, representing the "Service Area". Numerous red dots are scattered across the map, representing patient distribution. Several green stars are also visible, likely representing facilities. A scale bar at the bottom of the map indicates a distance of 70 miles.

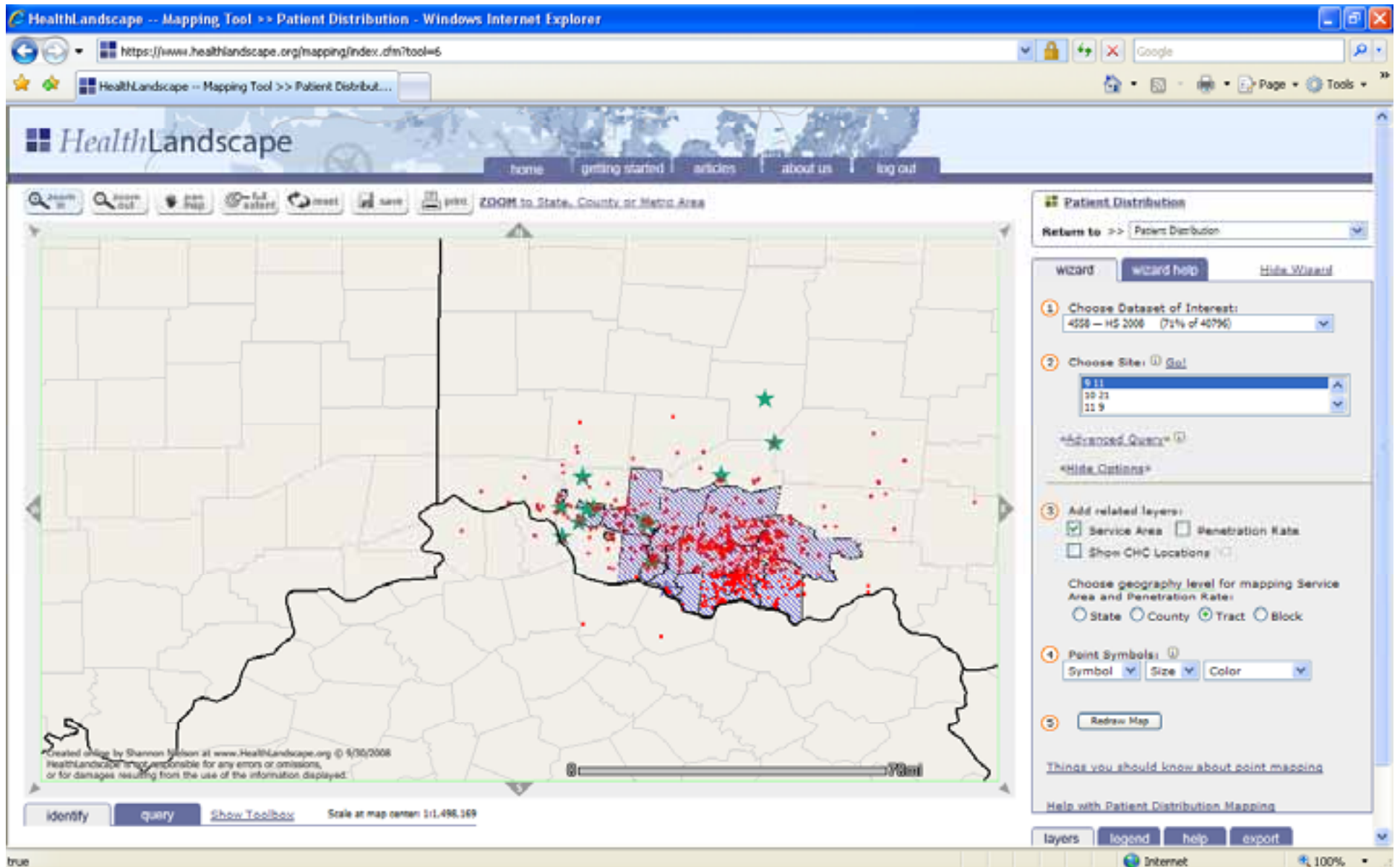
On the right side, the "Patient Distribution" configuration panel is visible. It includes a "Return to" dropdown menu set to "Patient Distribution". Below this, there are sections for "Wizard" (with "wizard help" and "Hide Wizard" links), "Choose Dataset of Interest" (set to "4558 - HS 2008 (71% of 40796)"), and "Choose Site" (with a list of site IDs: 13, 217, 317). The "Add related layers" section is circled in red and contains the following options:

- Service Area Penetration Rate
- Show Clin. Locations

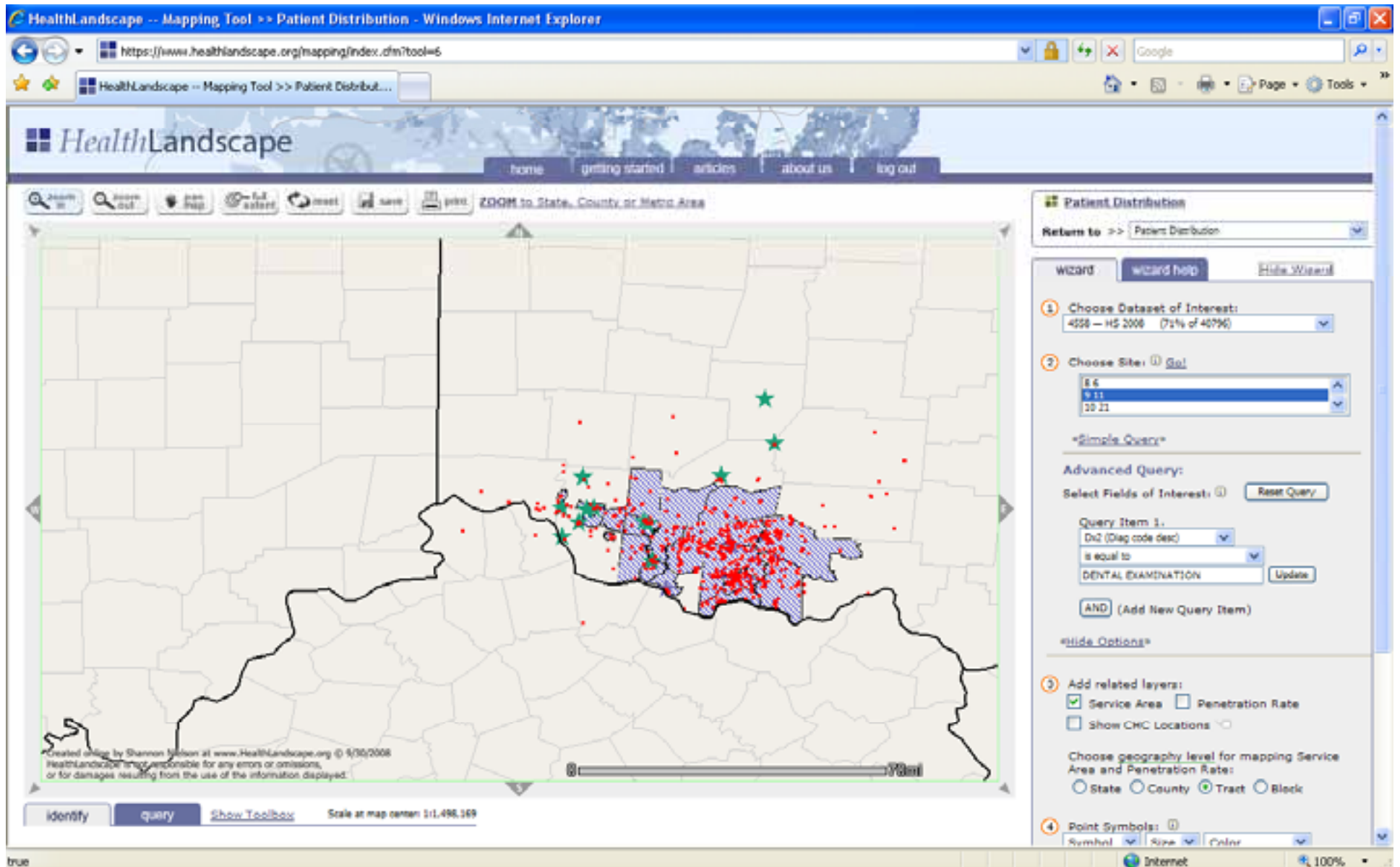
Below these options, there is a section for "Choose geography level for mapping Service Area and Penetration Rate" with radio buttons for "State", "County", "Tract" (selected), and "Block". There is also a "Point Symbols" section with dropdown menus for "Symbol", "Size", and "Color". A "Redraw Map" button is located at the bottom of the configuration panel.

At the bottom of the map area, there are buttons for "identify", "query", and "Show Toolbox", along with the text "Scale at map center 1:1,496,369".

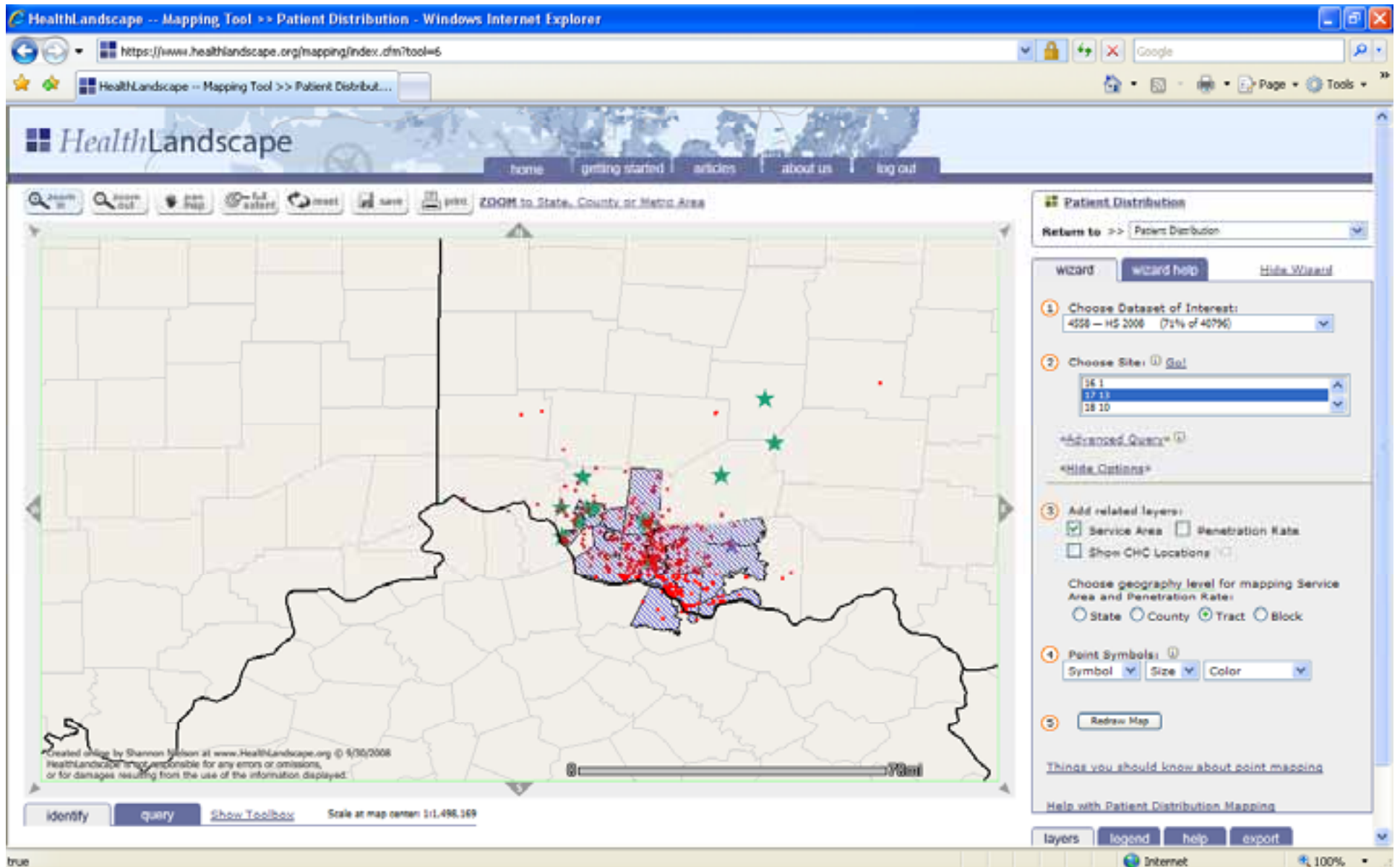
Service Area, Facility 11



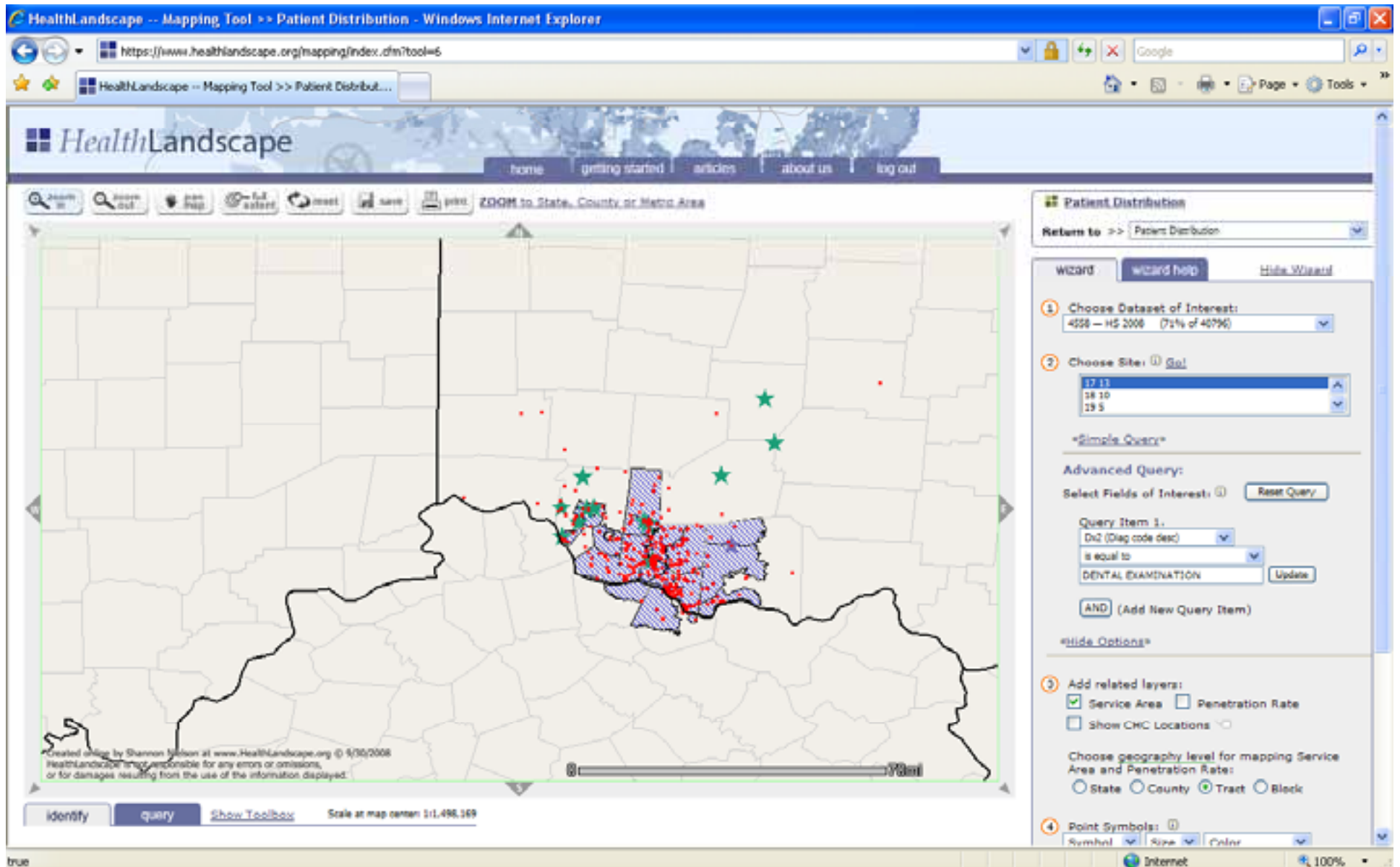
Service Area, Facility 11 – Dental Patients ONLY



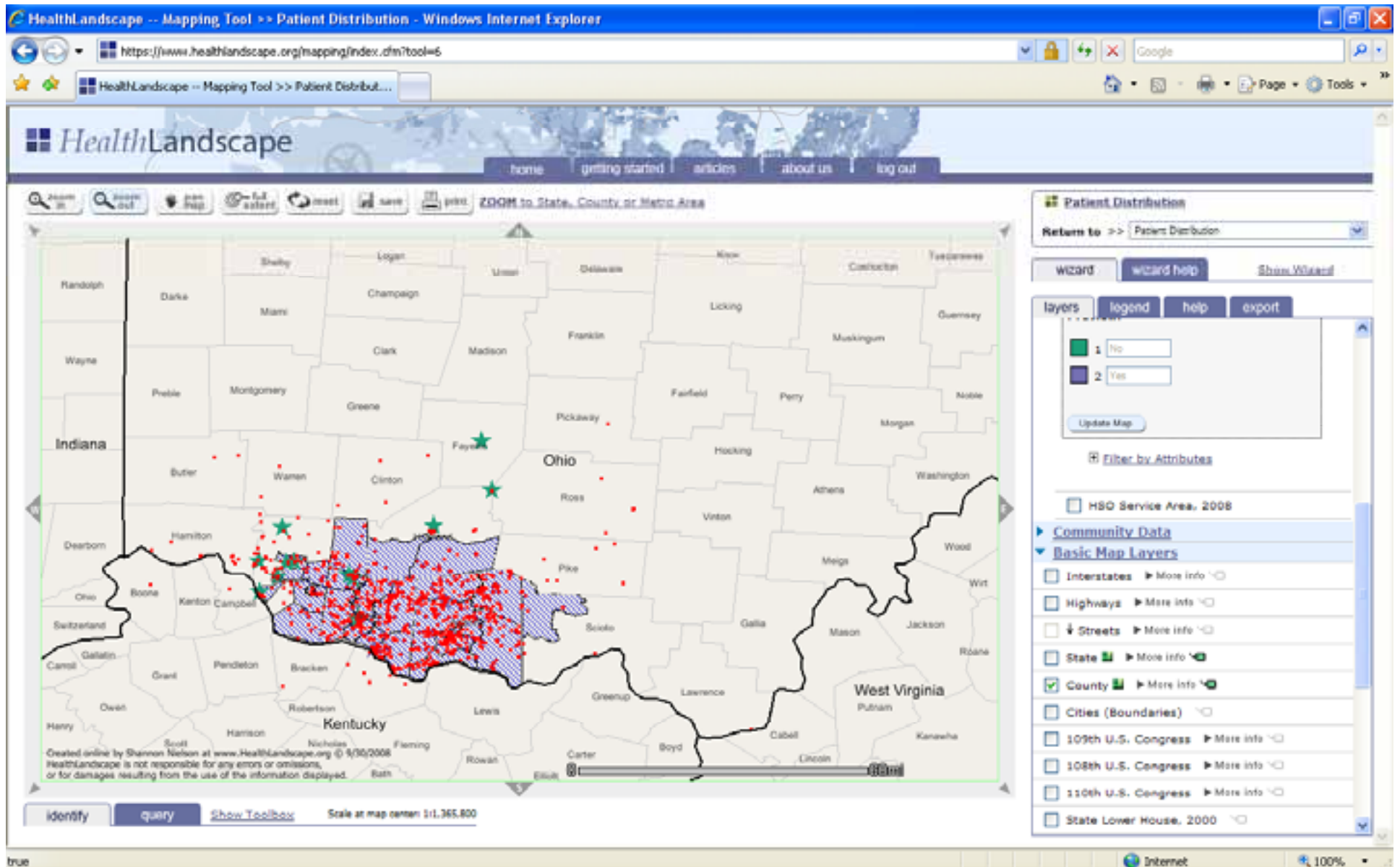
Service Area, Facility 13



Service Area, Facility 13 – Dental Patients ONLY



Combined Service Area, Facilities 11 and 13 – Dental Patients Only



Locating a Dental Clinic

- HealthSource of Ohio saw 40796 patients in first 6 months of 2008
 - 14502 (35%) had Medicaid as primary payer
- 2074 Dental Patients
 - 910 (43%) had Medicaid as primary payer
- New Dental Clinic was approved by board based, in part, on evidence presented in map form

HealthLandscape Recommendations

- Implemented:
 - ZIP Code Service Area and Penetration Rate Mapping
- In development:
 - Improved ability to control order of layering
 - Improve interactions & layering of features controlled by wizards

Questions, Comments, Concerns



<http://www.healthlandscape.org>

Mark Carrozza
MCarrozza@HealthFoundation.org
(513) 458-6722

Robert Graham Center
202-331-3360