

County of San Diego

Firestorm 2007



Topic Outline

- **Standards of Operation**
- **WebEOC**
- **Health and Human Services
Agency Emergency GIS
Services**
- **Department of Environmental
Health Emergency GIS Services**



County of San Diego

GIS Emergency Standards of Operation



GIS Emergency Standards of Operation

- **Purpose**

- Facilitate dissemination of GIS services and products.
- Provide guidelines for the organization and management of GIS data, map creation and output.

- **Objectives**

- Determine key GIS Supplies and Tools for EOC/DOC/MOC and Field Responders.
- Determine Data and Mapping Protocols.
- Determine and Document Protocols for Data/Map Dissemination/Sharing via WebEOC.
- Determine Data and Map Sharing practices with External Contacts.



GIS Emergency Standards of Operation

- **Who**

- County SOP subcommittee – County GIS staff and incident support subject matter experts
- City/County Emergency Group

- **Process**

- Determine gaps in data needs.
- Determine metadata requirements.
- Research
 - National Wildfire Coordinating Group - *GSTOP*, June 2006
- Determine content.



GIS Emergency Standards of Operation

- **Content**

- Resource Expectations
 - Operations Centers and Field Responders
 - Hardware, software, reference materials
- GIS Roles and Responsibilities
- File Naming and Directory Structure
 - `yyyymmdd_hhss_IncidentName_Subjectmatter`
- Incident Data Expectations
 - Briefing Cycles
 - Perimeters, Evacuations Zones and Damage Assessment
- Documentation and Metadata



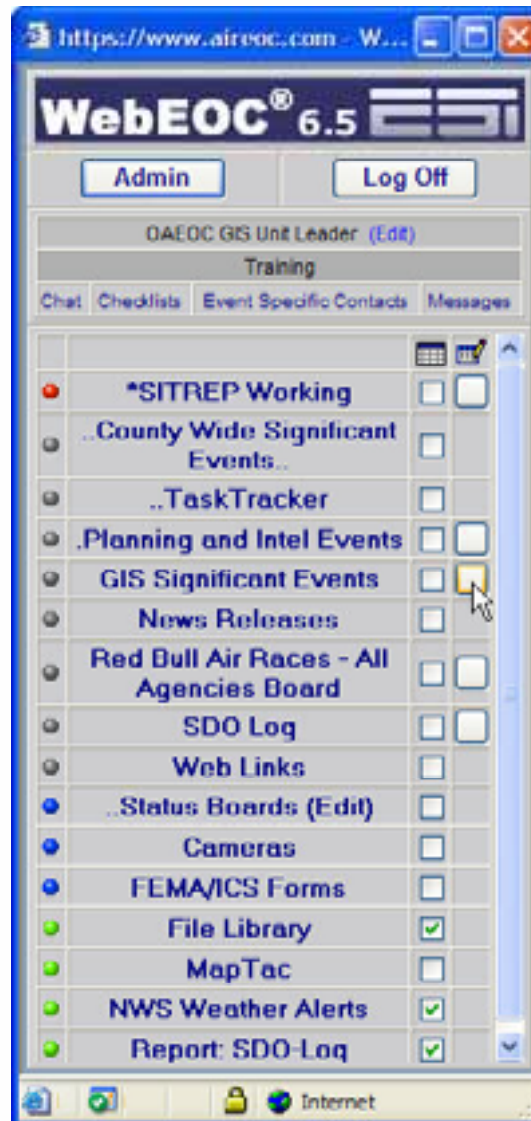
GIS Emergency Standards of Operation

- **Content**
 - Data and Mapping Protocols
 - Format conventions
 - Backup policy
 - Distribution regulations
 - QA/QC
 - How to use WebEOC
 - Staffing and Team Transition
 - How to request additional GIS staff support.
 - How to manage shift changes.



GIS Emergency Standards of Operation

- **WebEOC**
 - **GIS Significant Events Board**



GIS Emergency Standards of Operation

- **WebEOC**

https://www.aieoc.com - GIS Significant Events Dps - Microsoft Internet Explorer

Entry Sub File

New Record

Save Spell Check Cancel Retrieve Record

Report As: OAEOC GIS Unit Leader

Recommend for Significant Event Review

Name: Paul Hardwick

DateTime: 10/11/2007 17:35:13

Event Type: (Select)

Description:

Priority: (Select)

Information Accuracy: (Select) Source:

GIS File Sharing

Map Theme:

Geographic Extent:

Map File Naming Example: `systemid_area_incidentname_subjectmeter_size_orientation`

Attach File: Browse File Type: (Select)

TASK TRACKER - RE SOURCE REQUEST

Post to Task Tracker Board

Location Needed:

Contact/Name/Phone:

Assign To: (SELECT FROM LIST)

Quantity, Size, Details:

Save



County of San Diego

HHSA GIS Operations Response



HHSA GIS Operations Response

- **HHSA Operations Centers**
 - Department Operations Center (DOC)
 - Medical Operations Center (MOC)
- **DOC**
 - **Focus:** Agency Operations, Essential Functions, Client Services, Staff
 - IT Infrastructure for Local Assistance Centers
 - Facilities Management



HHSA GIS Operations Response

- **Focus cont'd**
 - Staff Deployment
 - Public Guardian
 - DSW
- **GIS Services at DOC**
 - 24/7 Facilities Watch Maps
 - Disaster Food Stamp Request Support
 - Syndromic Surveillance Support
 - Data Creation
 - Road Closures
 - Red Cross and County Shelters



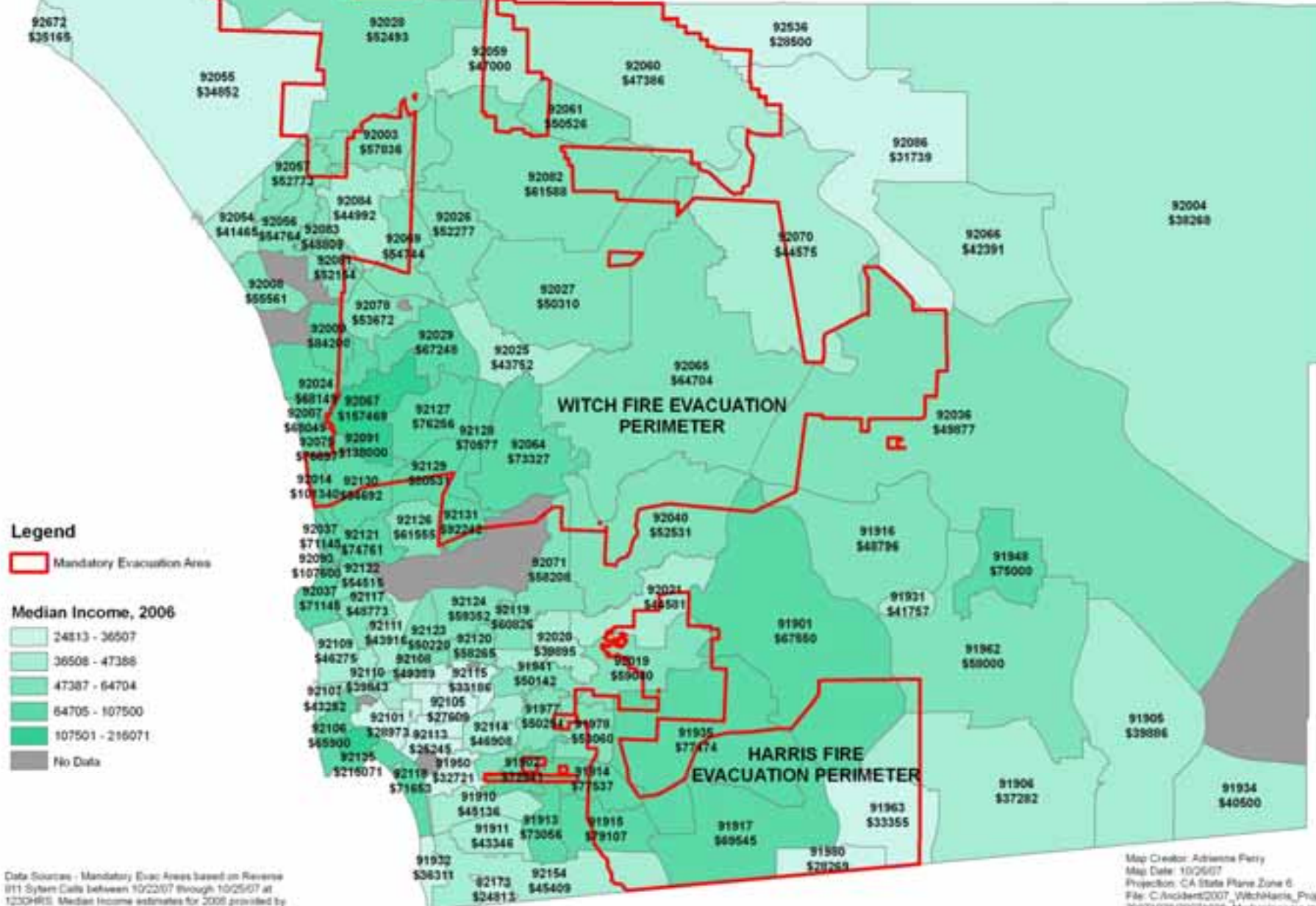
HHSA GIS Operations Response

- **MOC**

- **Focus:** Emergency Medical Services, special/vulnerable populations
 - PHN
 - Coordination of mobile transport
- **GIS Services at MOC**
 - Skilled nursing facilities watch maps
 - Residential care facilities watch maps
 - Coordination of deployment of vulnerable population to Orange/Riverside County facilities



MANDATORY EVACUATION AREAS and 2006 MEDIAN INCOME



Data Source: Mandatory Evac Areas based on Reverse 911 System Calls between 10/22/07 through 10/25/07 at 1230HR. Median Income estimates for 2006 provided by SANDAG.

Map Creator: Adrienne Perry
Map Date: 10/26/07
Projection: CA State Plane Zone 6
File: C:\Incident2007_WitchHarris_Project\20071026\20071026_MedianIncome.mxd



County of San Diego

DEH GIS Operations Response



HHSA GIS Operations Response

Shelters – 45 Official





County of San Diego
Department of Environmental Health
Food and Housing Division
(619) 338-2222



CLOSED

By Order of the Department of Environmental Health

- This Facility is found to be an Imminent Health Hazard
(California Health & Safety Code)
- This Facility is Operating Without a Valid Health Permit
(California Health & Safety Code)

Facility Name & Permit #: _____

Location of Facility: _____

The Department of Environmental Health conducted an inspection on _____
and found the following conditions:

- | | |
|---|---|
| <input type="checkbox"/> Improper Food Temperatures | <input type="checkbox"/> Food From Unsafe Source |
| <input type="checkbox"/> Poor Personal Hygiene | <input type="checkbox"/> Contaminated Food or Equipment |
| <input type="checkbox"/> Lack of Hot Water/Water | <input type="checkbox"/> Vermin Infestation |
| <input type="checkbox"/> Sewage in Food Facility | <input type="checkbox"/> Other: _____ |

Penalty for Unauthorized Removal of this Notice

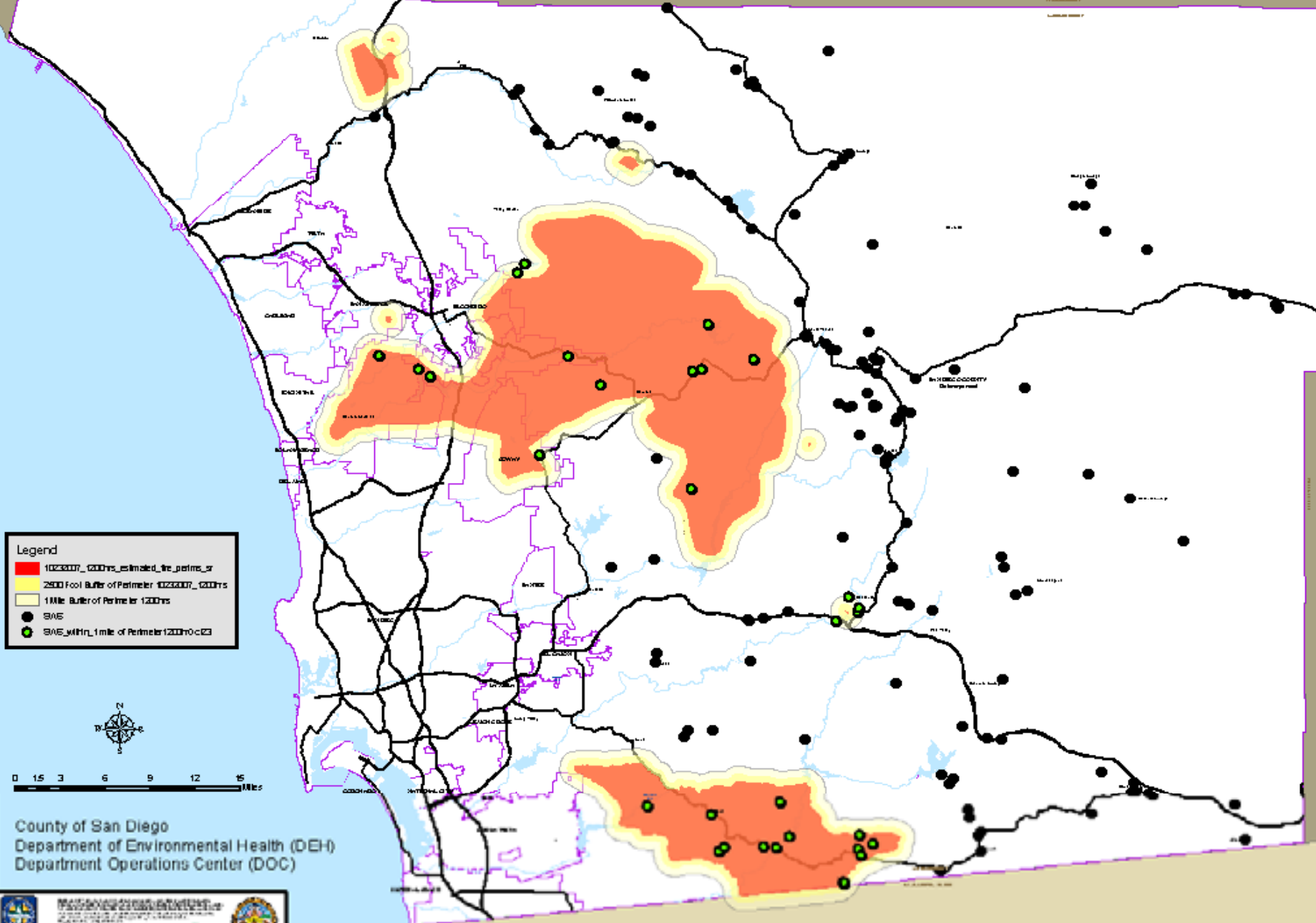
San Diego County Code of Regulatory Ordinances Section 61.128

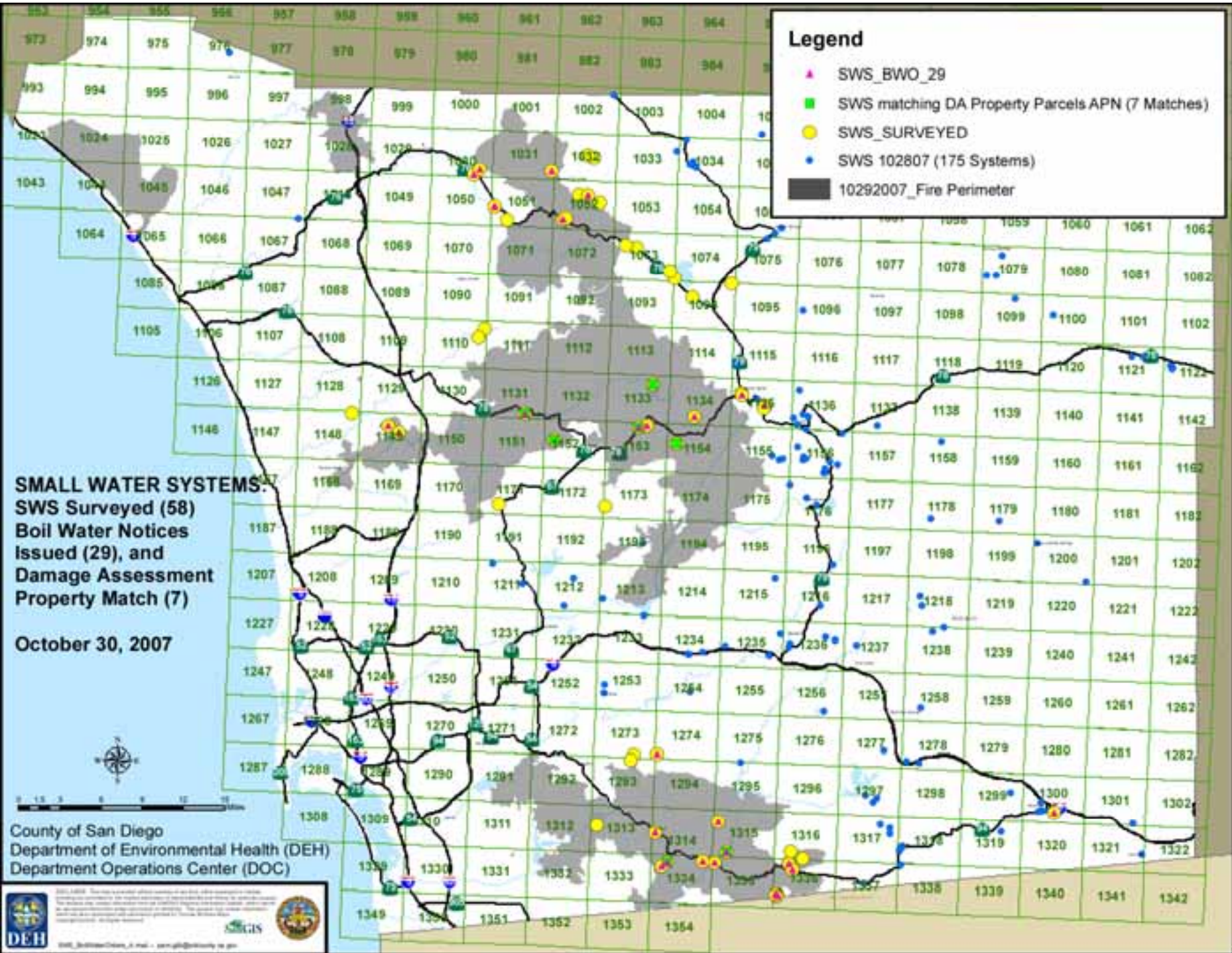
Fire Perimeters 102307_1200hrs

- Legend
- 102307_1200hrs_estimated_fire_perims_07
 - 2500 Foot Buffer of Perimeter 102307_1200hrs
 - 1 Mile Buffer of Perimeter 102307
 - SAS
 - SAS_within_1mile_of_Perimeter102307c123



County of San Diego
Department of Environmental Health (DEH)
Department Operations Center (DOC)





Thank You.

Adrienne M. Perry | HHS GIS Coordinator | adrienne.perry@sdcounty.ca.gov

Pam Gilb | DEH GIS Coordinator | pam.gilb@sdcounty.ca.gov

