

Esri Homeland Security Summit

July 9–12, 2011 | San Diego, CA

Welcome!

- 
- Desktop
- Planning and Analysis
 - Threat Assessments
 - Risks and Vulnerabilities

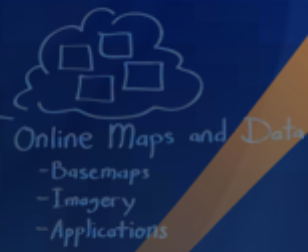
- GIS Server
- Local and Enterprise GIS Data
 - Crime/Incident/Tips and Alerts
 - Web Services
 - Dynamic Sensor Data



Russ Johnson

Esri Director of Public Safety and Homeland Security Solutions





A Very Busy Year

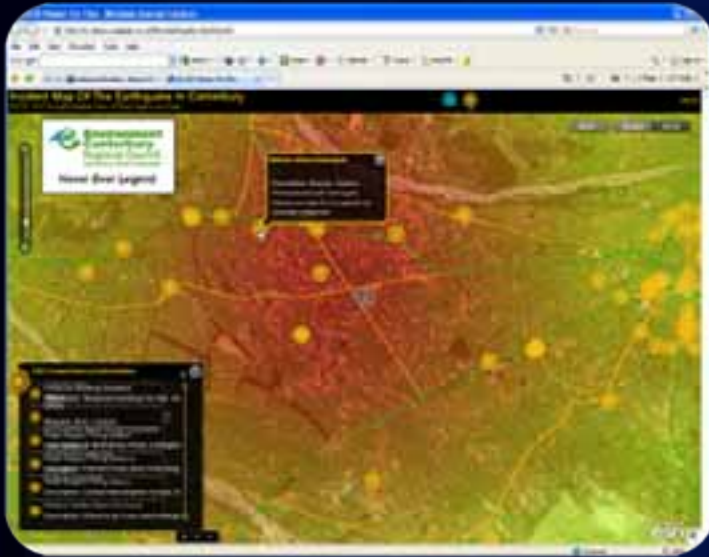
Lots of Lessons!



San Bruno – Gas Line Explosion



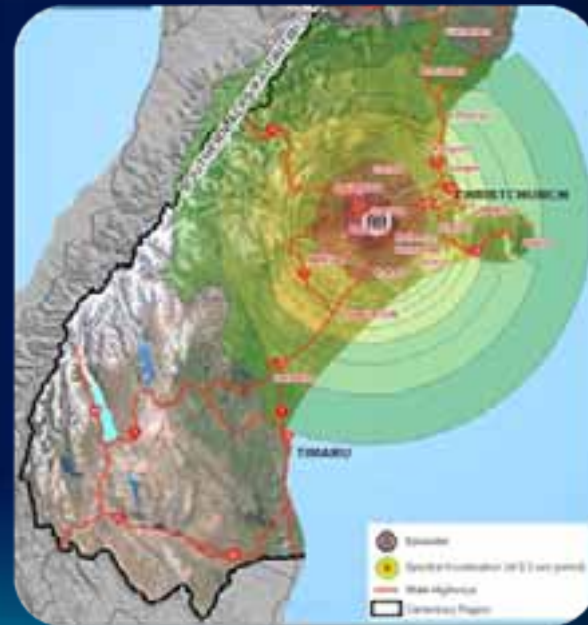
New Zealand Earthquake



Social Media

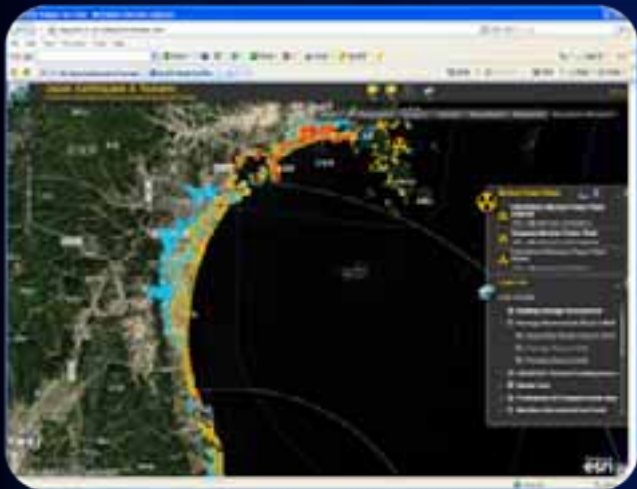


Damage Assessment



Shake Map

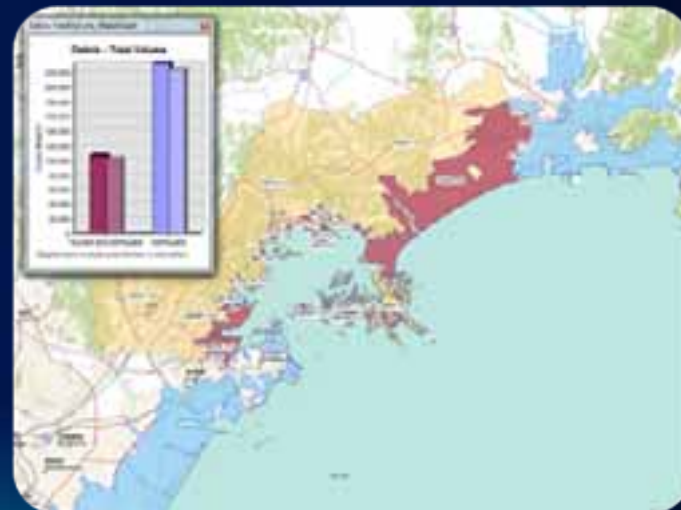
Japan Earthquake and Tsunami



COP

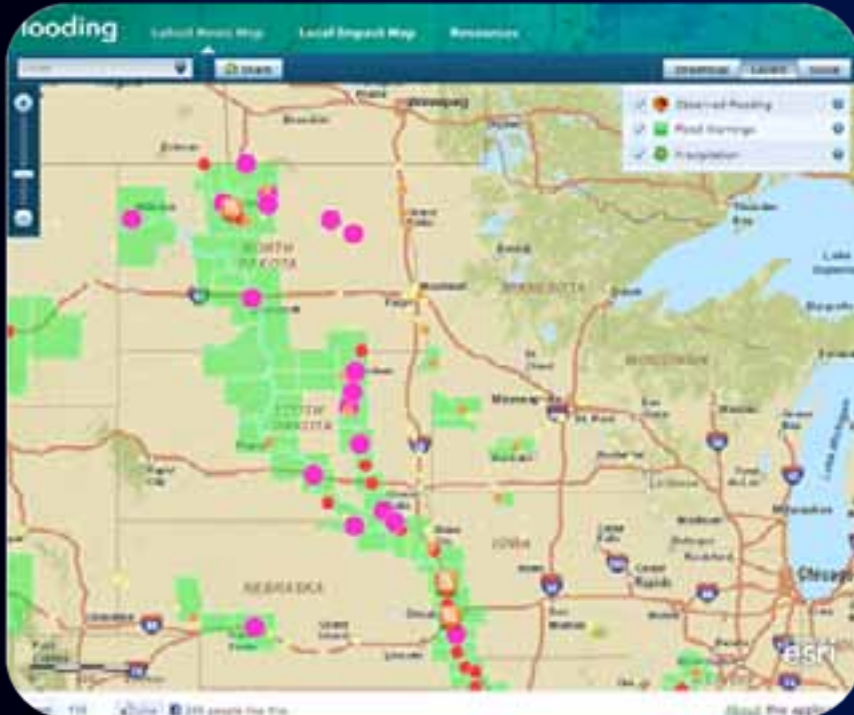


Social Media

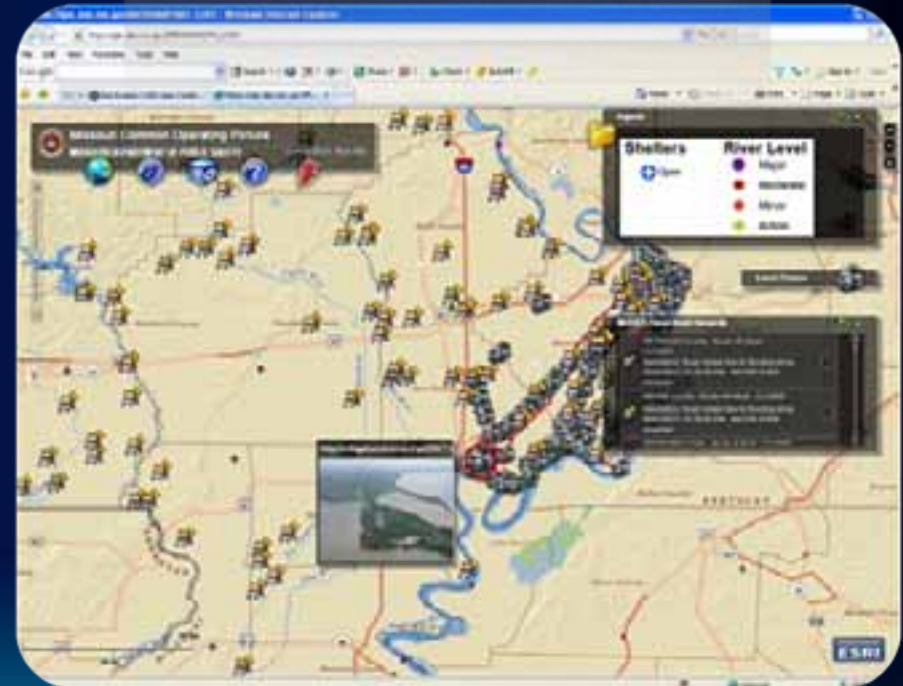


Debris Removal

U.S. Flooding

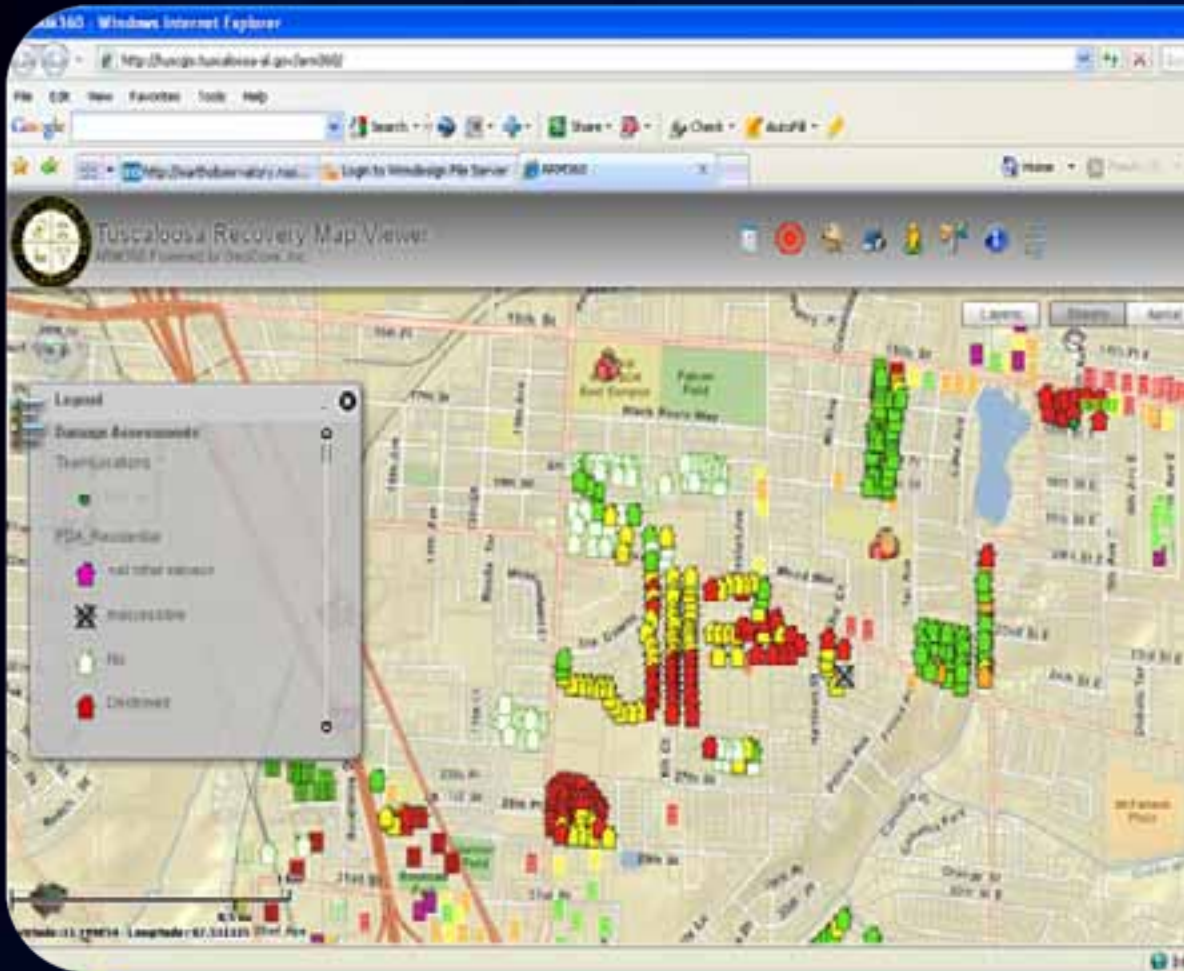


Social Media



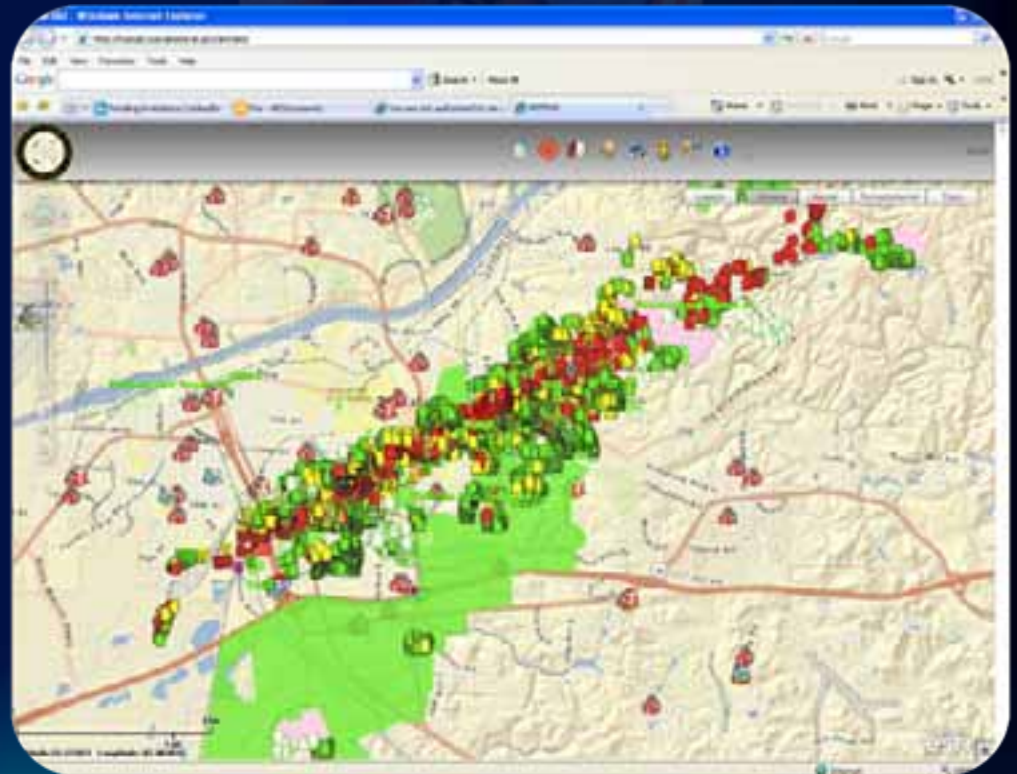
COP

Tornadoes – Tuscaloosa



Damage Assessment

Tornadoes – Joplin



Damage Assessment

Wildfires – Texas, Arizona, New Mexico



Operations Map



Public Information

National Level Exercise (NLE) – New Madrid



Common Operating Picture

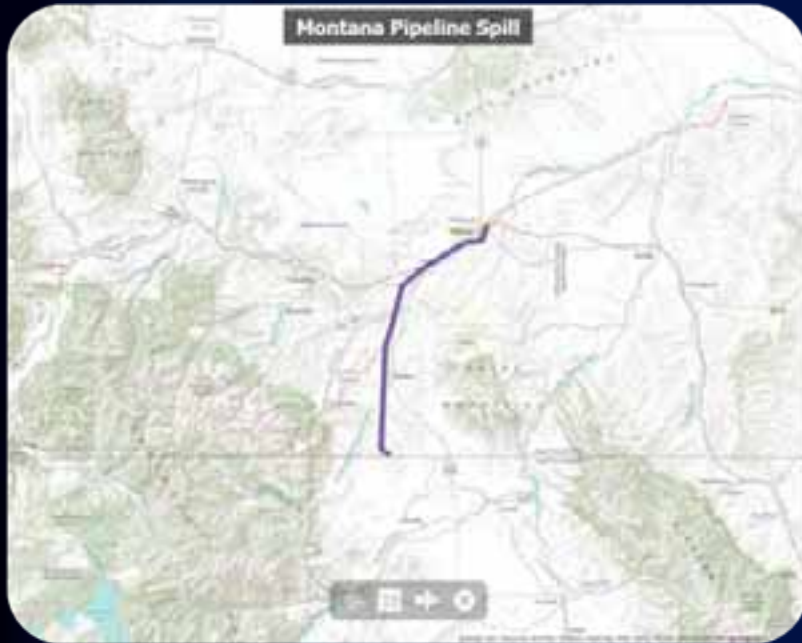


COP



Briefing Map

Montana – Yellowstone River Oil Spill



Briefing Map



Briefing Map

Trends

- **Reduced Budgets**
- **Do More with Less**
- **Mission or Role Based Specific Viewers**
- **The Cloud**
- **GIS and Social Media Integration**

This Year's Summit

- **Look back 10 years – What have we accomplished?**
- **Detailed review of many recent emergencies**
- **Social Media Challenges**
- **Catastrophic Emergencies – Japan**
- **Success Stories**
- **Networking Opportunities**

Master of Ceremony

Nate Johnson – National Public Safety Sales Manager



Morning Agenda

- **Captain Steve Pollackov – FDNY**
- **Mike Byrne – FEMA**

Break 10:00 – 10:25

- **Professor Hayashi – Disaster Prevention Research Institute**
- **Paul Christin – Esri**
- **Ryan Lanclos and Jeff Baranyi – Esri**

Hosted Lunch (Sapphire Terrace) Noon – 1:30