



Building State, Regional, and National Information Sharing Capabilities

Sean McSpaden, State of Oregon

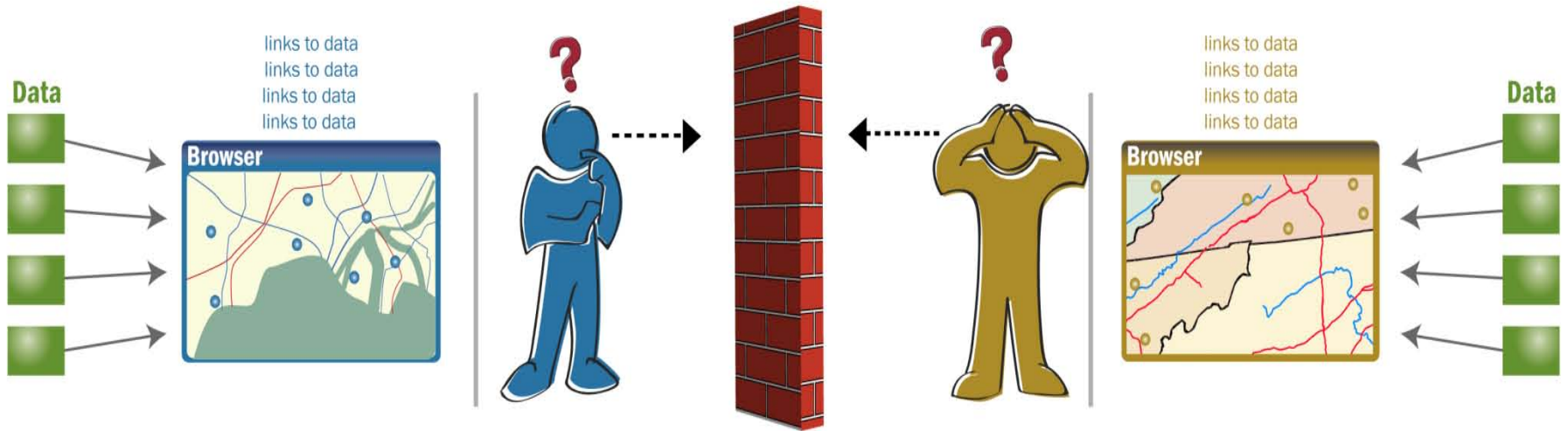
Esri Homeland Security Summit

- » Building state, regional & national information sharing capabilities

Sean McSpaden, Oregon Deputy State CIO



Today's Information-Sharing Challenge



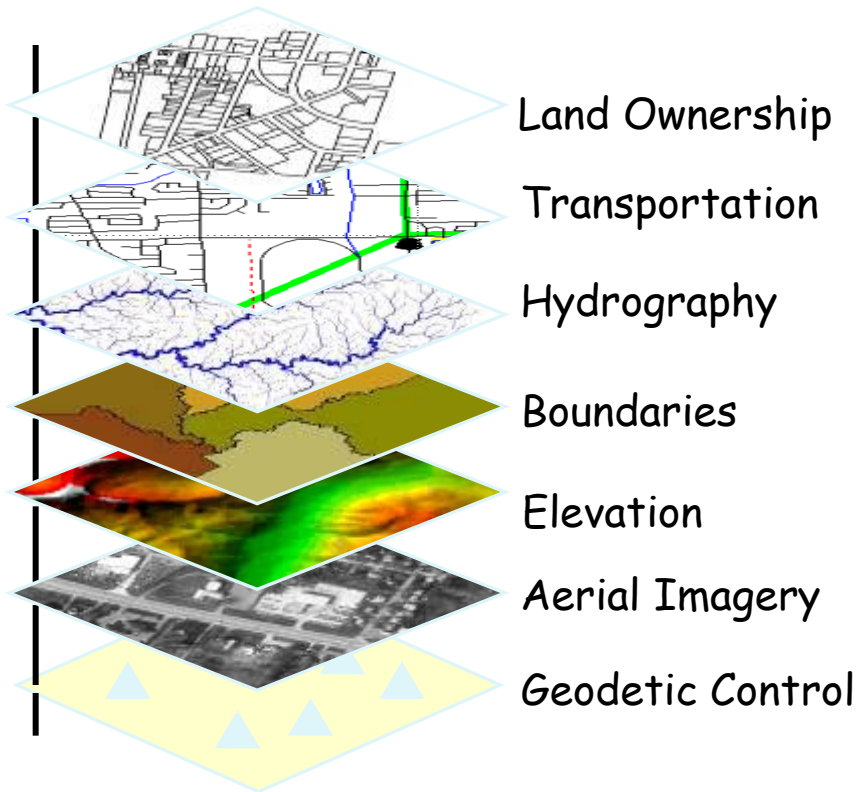
After the governance, operational and technical issues are solved...we must make available information actionable and usable by the operators who need it...

A Decade of Preparation

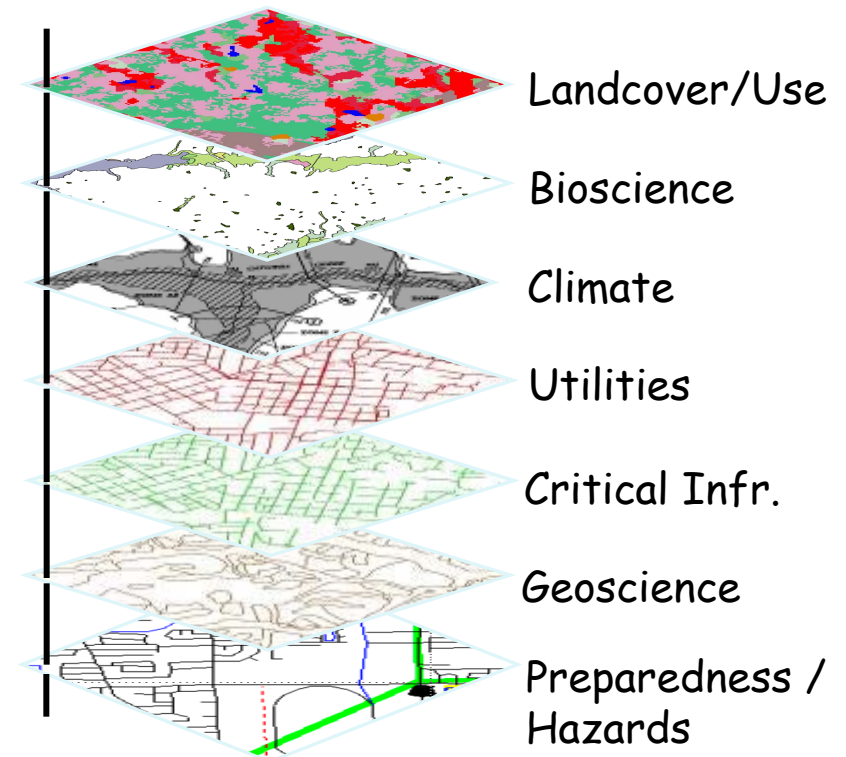
- ▶ Building Strong Relationships
 - Federal, Regional, Tribal, State, and Local Government
- ▶ Building Capacity
 - Skilled Professionals
 - GIS Technologies
- ▶ Building and providing access to relevant datasets & data services
 - Geospatial Data Development and Stewardship
- ▶ Preparing for this moment in time....

Oregon Spatial Data Infrastructure (SDI)

National Standards



Oregon Standards



Oregon Spatial Data Library & Map Services

Oregon Spatial Data Library

HOME SEARCH DOWNLOAD LAUNCH MAP VIEWER

LogIn Register Help About Feedback

Oregon EXPLORER

Home

The Oregon Spatial Data Library provides easy and convenient ways to find, access and share geospatial data.

Find Data

Search

Oregon Framework Data

- Admin Boundaries
- Bioscience
- Cadastral
- Climate
- Elevation*
- Geologic Control*
- Geoscience
- Hazards
- Hydrography
- Imagery
- Land Use/Land Cover
- Transportation
- Utilities*
- Reference

* An ArcGIS framework data and/or a standard available yet

GEO Spatial Data Library Alphabet

What is Framework Data?

Featured Data

Oregon Hazards Data

DATA	RESOURCES
<p>Hazards data includes:</p> <ul style="list-style-type: none"> Climate Coastal Erosion Earthquake Floods Geologic Floodplain Landfills Naturally Occurring Hazardous Materials Tsunami Volcanic Hazards Wildfire 	<ul style="list-style-type: none"> Hazard/Preparedness Framework Implementation Texas geodata.gov The National Atlas Hazards Explorer  <p>TOOLS</p>  <p>Hazards Reporter</p>

OSU Libraries | Institute for Natural Resources | NACSE

Search this site

Oregon Imagery EXPLORER

In partnership with: Oregon Geospatial Enterprise Office

STATEWIDE AERIAL IMAGERY FOR OREGON

Explore Oregon Imagery

Learn about the Oregon Imagery project

Available imagery and specifications

Research, Map & Analyze

Image Viewing and Extraction tool

Oregon Spatial Data Library

Use our mapping tools and view maps

Find imagery-related data collections

Reports and publications

How to Use Oregon Imagery

Ways to access the Imagery

Use the Oregon Imagery tutorials

Experts & Other Resources

Find expertise and contacts

Additional resources

View | Connect | Download

View the Oregon Imagery using our online interactive map

Stream imagery to your GIS applications

Download the raw imagery to your desktop

Choose one of the options above to access statewide imagery products. Imagery is currently available for 2000, 2005, 2000, and 1995

The Imagery Frameworks is helping realize the vision of navigaTOR with state-of-the-art accessibility to common data themes that geographic data users need.

Disclaimer: We are working to address issues of speed and display quality for these image services, and will be providing updates to improve these services over the next few months. During this "beta period," there may short periods when the services will become unavailable. We will make every effort to ensure that these interruptions occur during off-peak hours.

This is a GIS Portal Toolkit Computer System. Please read the [Disclaimer](#) and [Privacy](#) or [Contact Us](#).

HOME GALLERY MAP GROUPS MY CONTENT

Find maps, applications and more...

State of Oregon Geospatial Enterprise Office



Oregon GIS Community Maps, Services, and Applications



DAS Address Project: Address Points



Oregon Beach Debris Drop-Off Points



Oregon Transportation Framework Map



Oregon WeedMapper Beta

The Geospatial Enterprise Office (GEO) coordinates with government agencies to develop and manage geographic information. It communicates about Geographic Information Systems (GIS) issues with users. It guides development of Oregon's GIS data standards. Working together, state, federal, and local governments are improving the geographic information they share. GEO is also the State's point of contact for other organizations about geographic information and GIS. GEO also hosts the Oregon Geospatial Data Clearinghouse, an electronic library of geographic information.

Make a Map »

Create a map that can be viewed in a browser, desktop or mobile device. Share it on a blog, via email, or embed it in a website.

ArcGIS Online for Developers »


Build custom web and mobile applications that incorporate your maps and data.

Oregon GIS Community Gallery


Map Services from the Oregon GIS Community

This Map Gallery is a collection of services from the Oregon GIS User Community. Find out more about our services by viewing the gallery below.


Search maps




Oregon Community Anchor



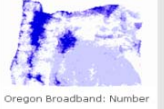
Oregon Population ...




Oregon Broadband: ...




Oregon Broadband: ...




Oregon Broadband: Number




Oregon Broadband: No ...



Oregon Alternative Fuels ...



OWEB Watershed ...



Oregon Voter Drop Box ...

Links

Oregon GIS Community Application Gallery

GEO - Oregon Geospatial Enterprise Office - Web Maps and Services

The Oregon API User Group Web Site

Instructions on how to upload your application



Oregon Web Mapping Applications



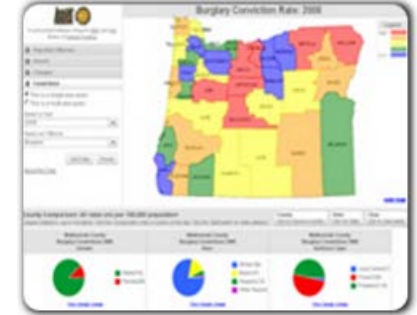
Oregon Watershed Enhancement Board Investment Tracker



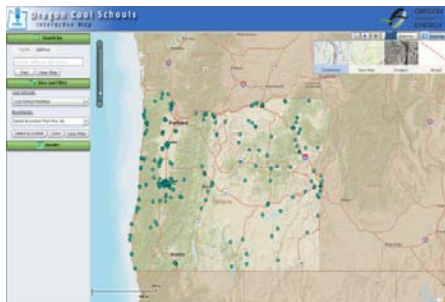
Office of the Governor Oregon's Recovery Act Spending



Oregon Secretary of State Voter Ballot Drop Box Locator



Oregon Criminal Justice Commission Interactive Map



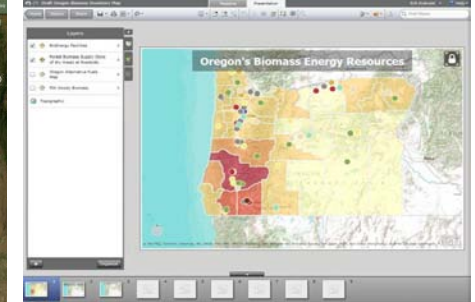
Oregon Cool Schools Interactive Map



Oregon Broadband Interactive Map




Oregon Taxlot Map



Oregon Biomass Energy Resources Map

It's not about GIS or geospatial data for its own sake. Instead, GIS should be thought of as the **unifying** tool we all use to improve government decisions, investments and services!

Virtual USA



VIRTUAL USA 

Home | The Value of Viewers | The Need for Sharing | The Solution | Reference Materials | Contact Us

Registered Users
Are you a member of a participating vUSA organization or government agency? If so, you can log in here or request a username and password.

Username: Password:

[REQUEST USER ACCESS TO vUSA.](#)

Virtual USA:
The right information, at the right time, for the right people

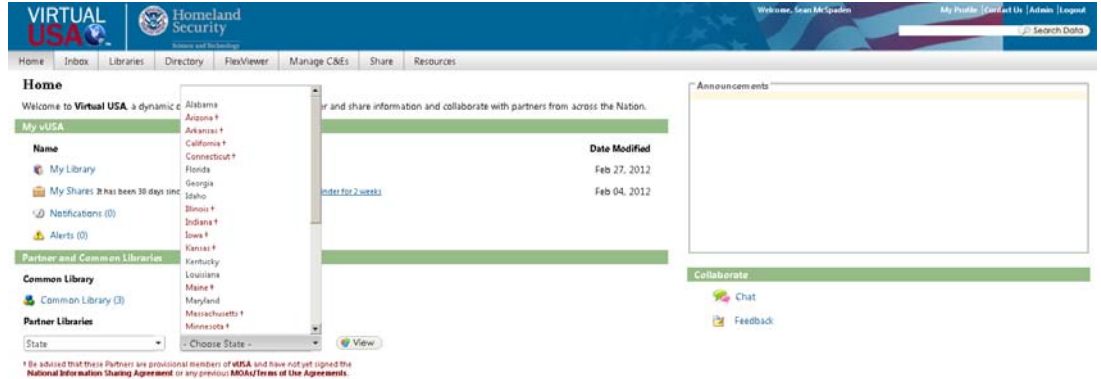
In an emergency, reliable information is a decision maker's most important asset. Virtual USA enables emergency response agencies to more quickly find, share, and analyze data — allowing them to make better decisions based on more complete information.


The Virtual USA Web site provides the data pipeline that allows partners to share critical information between geospatial viewers. The success of Virtual USA rests not only on technical capabilities, but on existing relationships among a community of emergency managers at all levels who agree to collaborate to improve situational awareness and emergency response.

Learn more about Virtual USA

- How states' geospatial visualization systems are revolutionizing emergency preparedness and response
- What happens when a regional emergency requires a coordinated response
- How Virtual USA helps responders exchange critical information safely and securely within a trusted community

[Learn More](#)



VIRTUAL USA 

Welcome, Sean McSpidon | My Profile | Contact Us | Admin | Logout | Search Data

Home | Inboxes | Libraries | Directory | FlexViewer | Manage C&Es | Share | Resources

Home
Welcome to **Virtual USA**, a dynamic community where you can find, share information and collaborate with partners from across the Nation.

My vUSA

Name	Date Modified
My Library	Feb 27, 2012
My Shares (7) has been 30 days since last used	Feb 04, 2012
Notifications (0)	
Alerts (0)	

Partner and Common Libraries

Common Library
Common Library (3)

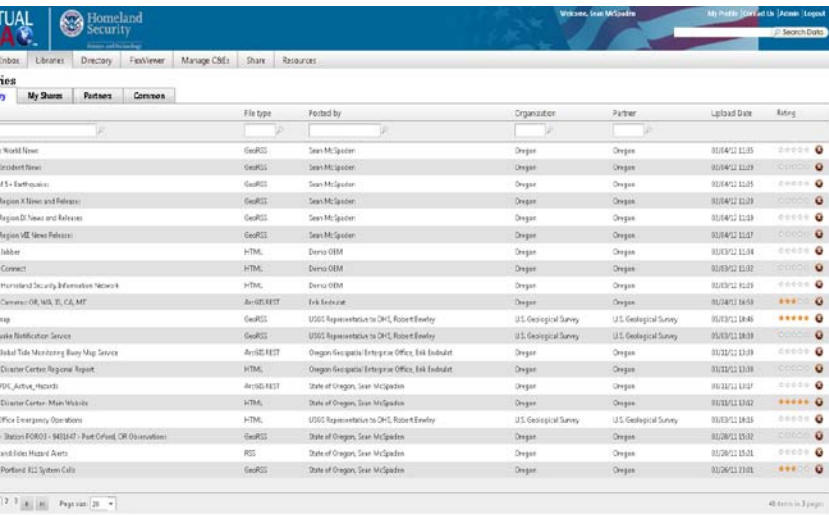
Partner Libraries
State:


* It is advised that these Partners are provisional members of vUSA and have not yet signed the National Information Sharing Agreement or any previous MOUs/Terms of Use Agreements.

Announcements

Collaborate

- Chat
- Feedback



VIRTUAL USA 

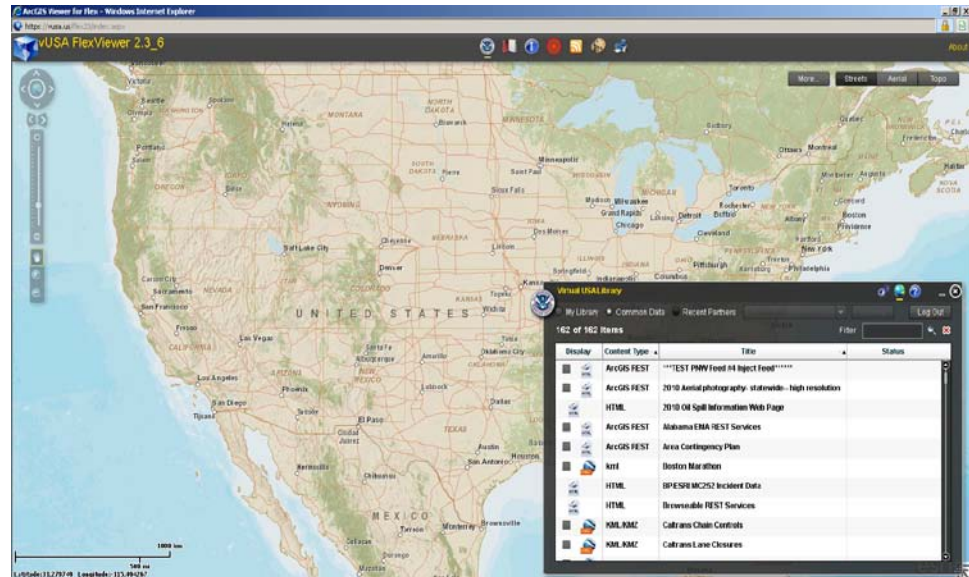
Home | Inboxes | Libraries | Directory | FlexViewer | Manage C&Es | Share | Resources

Libraries

My Library | My Shares | Partners | Common

Title	File type	Posted by	Organization	Partner	Upload Date	Rating
3) Eastern World News	GeoRSS	Sean McSpidon	Oregon	Oregon	2010/12/12/09	★★★★★
3) NCSA Incident Files	GeoRSS	Sean McSpidon	Oregon	Oregon	2010/12/12/09	★★★★★
3) USGS 1:50,000 Bathymetry	GeoRSS	Sean McSpidon	Oregon	Oregon	2010/12/12/09	★★★★★
3) FEMA Region X News and Releases	GeoRSS	Sean McSpidon	Oregon	Oregon	2010/12/12/09	★★★★★
3) FEMA Region II News and Releases	GeoRSS	Sean McSpidon	Oregon	Oregon	2010/12/12/09	★★★★★
3) FEMA Region VII News Releases	GeoRSS	Sean McSpidon	Oregon	Oregon	2010/12/12/07	★★★★★
HC21 - Idaho	HTML	Denro OEM	Oregon	Oregon	2010/12/12/04	★★★★★
HC21 - Connect	HTML	Denro OEM	Oregon	Oregon	2010/12/12/02	★★★★★
HC21 - Homeland Security Information Network	HTML	Denro OEM	Oregon	Oregon	2010/12/12/02	★★★★★
Traffic Camera OR, WA, IL, CALIF	GeoRSS	Erik Redwine	Oregon	Oregon	2010/12/12/08	★★★★★
Darkness	GeoRSS	USGS Representative to CH1, Robert Enlow	U.S. Geological Survey	U.S. Geological Survey	2010/12/12/06	★★★★★
Earthquake Notification Services	GeoRSS	USGS Representative to CH1, Robert Enlow	U.S. Geological Survey	U.S. Geological Survey	2010/12/12/09	★★★★★
USGS Global Tide Monitoring Buoy Map Service	HTML	Oregon Geospatial Enterprise Office, Erik Redwine	Oregon	Oregon	2012/12/12/09	★★★★★
Pacific Center Center Regional Report	HTML	Oregon Geospatial Enterprise Office, Erik Redwine	Oregon	Oregon	2012/12/12/09	★★★★★
SHREYAS_Active_Hazards	GeoRSS	State of Oregon, Sean McSpidon	Oregon	Oregon	2012/12/12/07	★★★★★
Pacific Center Center Main Website	HTML	State of Oregon, Sean McSpidon	Oregon	Oregon	2012/12/12/02	★★★★★
USGS Office Emergency Operations	HTML	USGS Representative to CH1, Robert Enlow	U.S. Geological Survey	U.S. Geological Survey	2010/12/12/03	★★★★★
NORC - Station F0801 - 1403147 - Fuel Crises, OR Discussion	GeoRSS	State of Oregon, Sean McSpidon	Oregon	Oregon	2010/12/12/02	★★★★★
USGS Land Use Hazard Alerts	RSS	State of Oregon, Sean McSpidon	Oregon	Oregon	2010/12/12/01	★★★★★
City of Portland I2I System Calls	GeoRSS	State of Oregon, Sean McSpidon	Oregon	Oregon	2010/12/12/01	★★★★★

48 items in 2 pages



FlexViewer for Flex - Windows Internet Explorer

Virtual USA FlexViewer 2.3_6

Map of the United States showing various locations and data points.

Virtual USA Library

162 of 162 Items

Display	Content Type	Title	Status
GeoRSS	GeoRSS	***TEST PMW Feed #4 Injct Feed***	
GeoRSS	GeoRSS	2010 Aerial photography statewide - high resolution	
HTML	HTML	2010 OR Spill Information Web Page	
GeoRSS	GeoRSS	Alabama EMA FERT Services	
GeoRSS	GeoRSS	Area Contingency Plan	
HTML	HTML	Boston Marathons	
HTML	HTML	BP/ESPO MCS25 Incident Data	
HTML	HTML	Renewable FERT Services	
NML.RMC	NML.RMC	California Chain Certificates	
NML.RMC	NML.RMC	California Lane Closures	

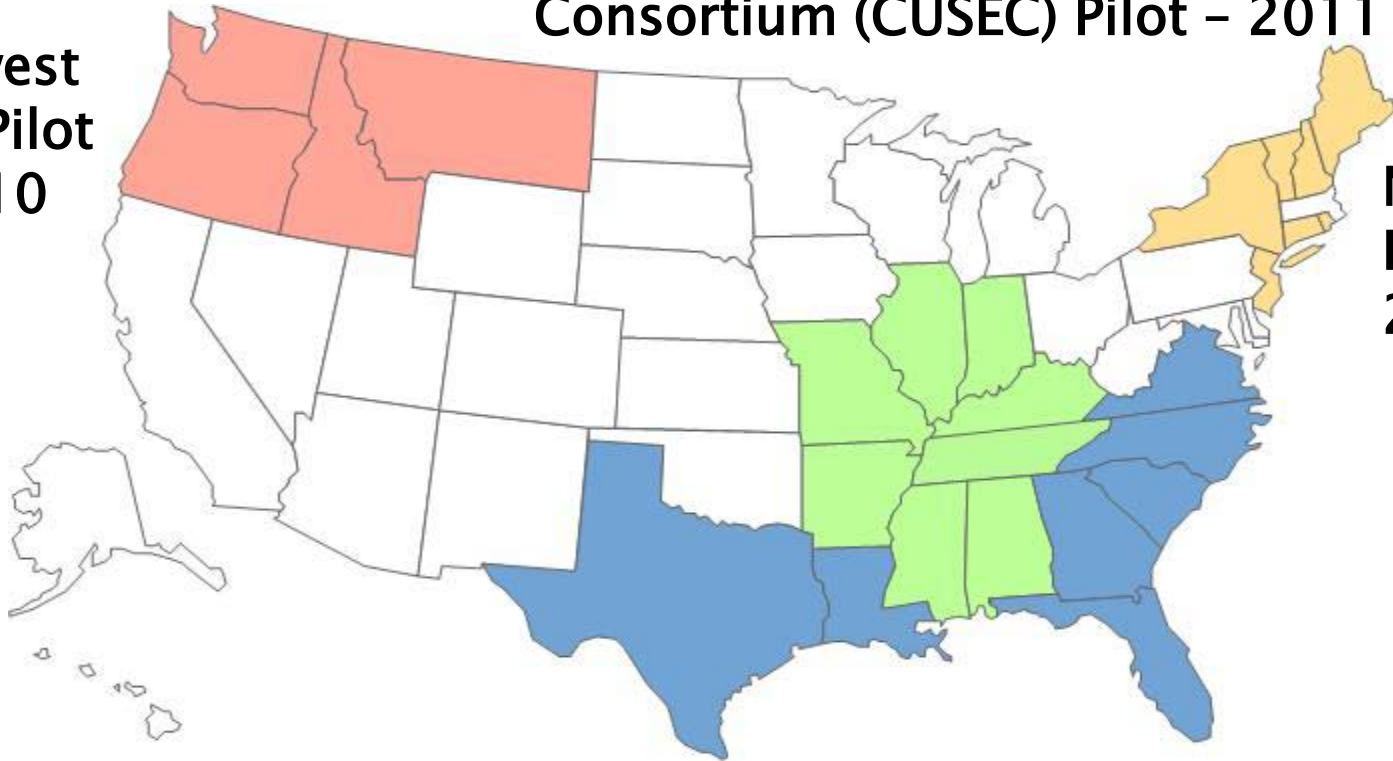


Regional Initiatives and Successes

Pacific Northwest (PNW) Pilot 2009-10

Central U.S. Earthquake Consortium (CUSEC) Pilot - 2011

Northeast Pilot - 2012



Southeast Regional Operations Platform Pilot (SE ROPP) - 2008

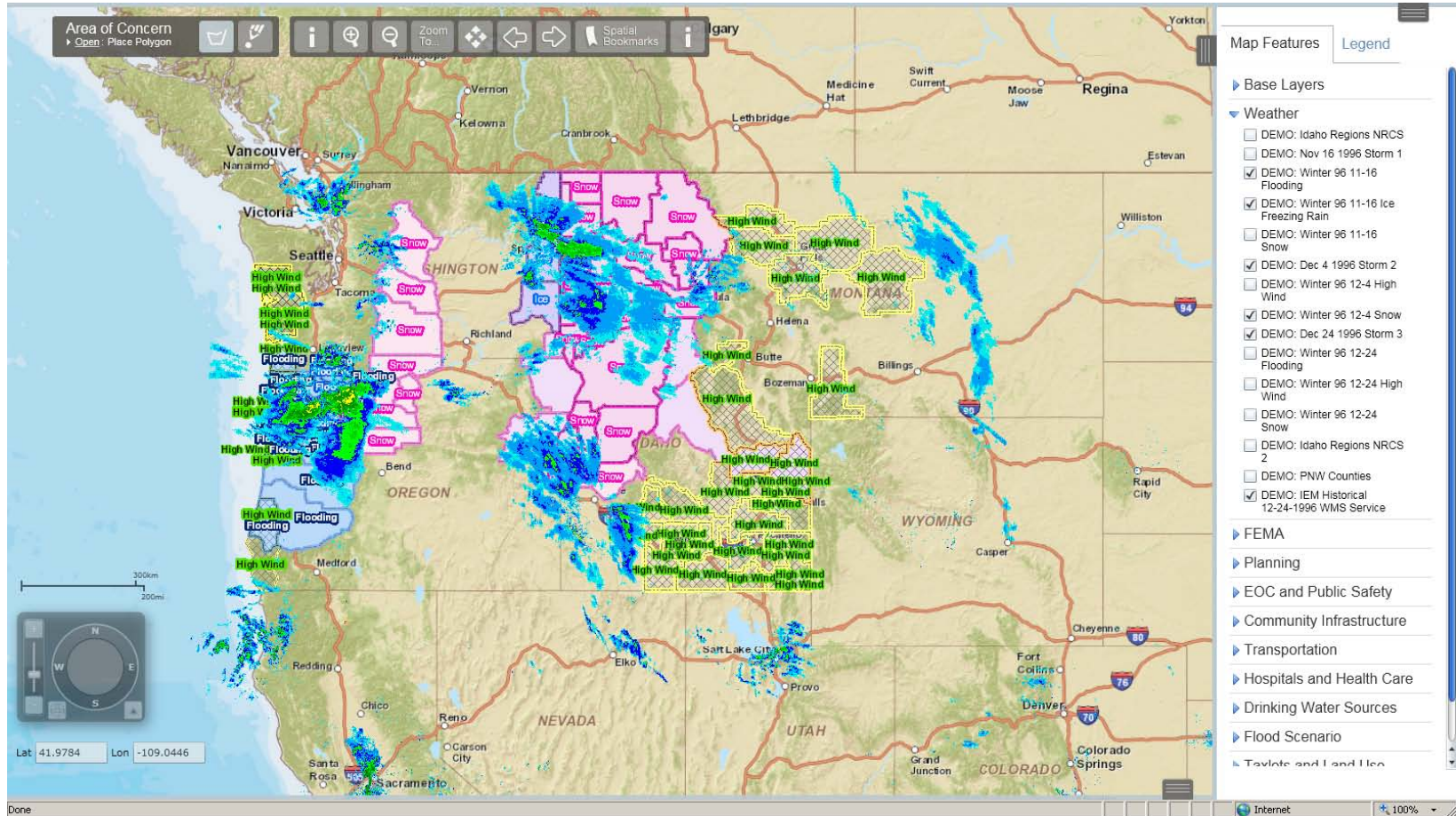


vUSA Pacific Northwest Pilot

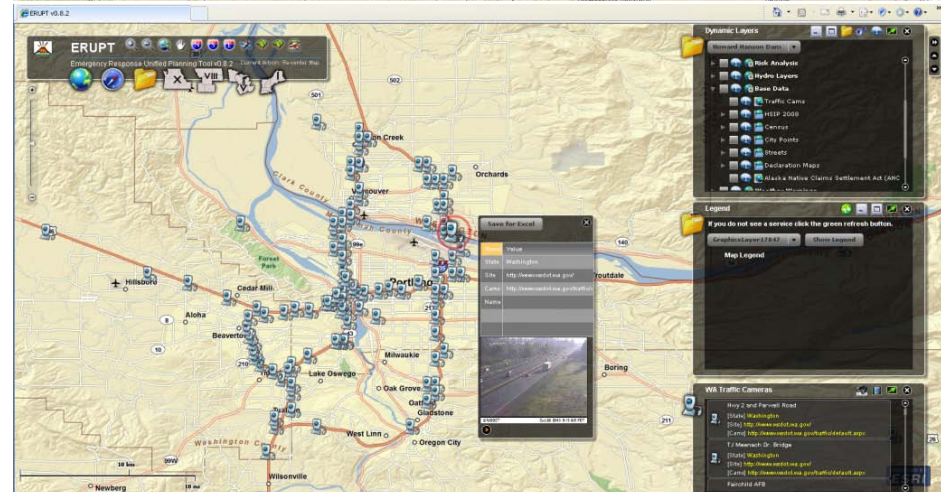
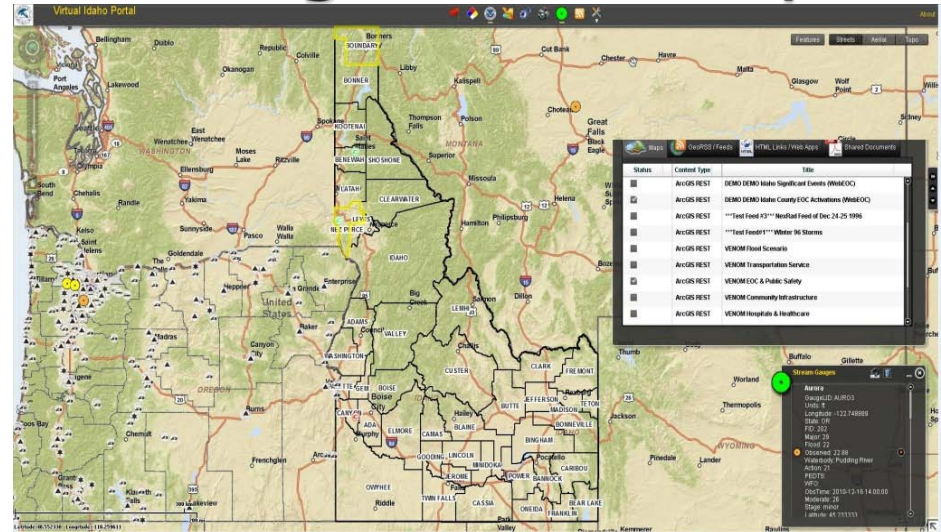
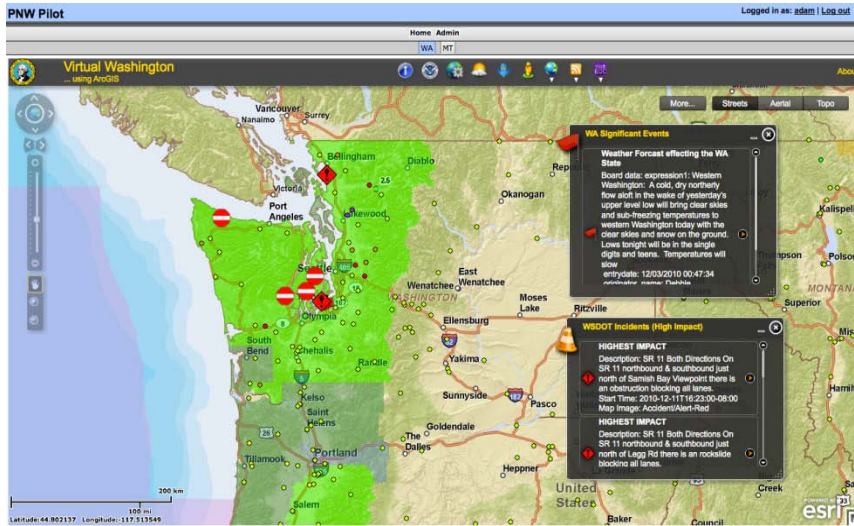
- ▶ Kickoff Meeting: Tacoma, WA – September 2009
 - Goal: Develop a regional information sharing capability (Common Operating Picture for Emergency Management)
- ▶ Shared Commitment
 - Adjutant Generals from each of the five member states agreed to create a PNW Regional Pilot Demonstration within a year (December 2010)
 - Scenario: Severe Winter Storm
- ▶ Pilot participants
 - Alaska
 - Idaho
 - Montana
 - Oregon
 - Washington



Demonstration: Severe Winter Storm – 1996



Pacific Northwest Pilot – Regional Activity

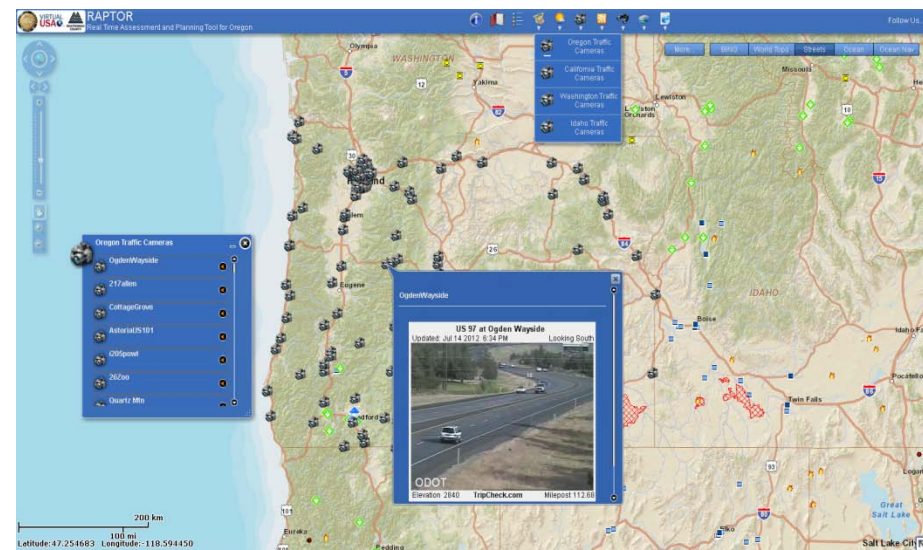
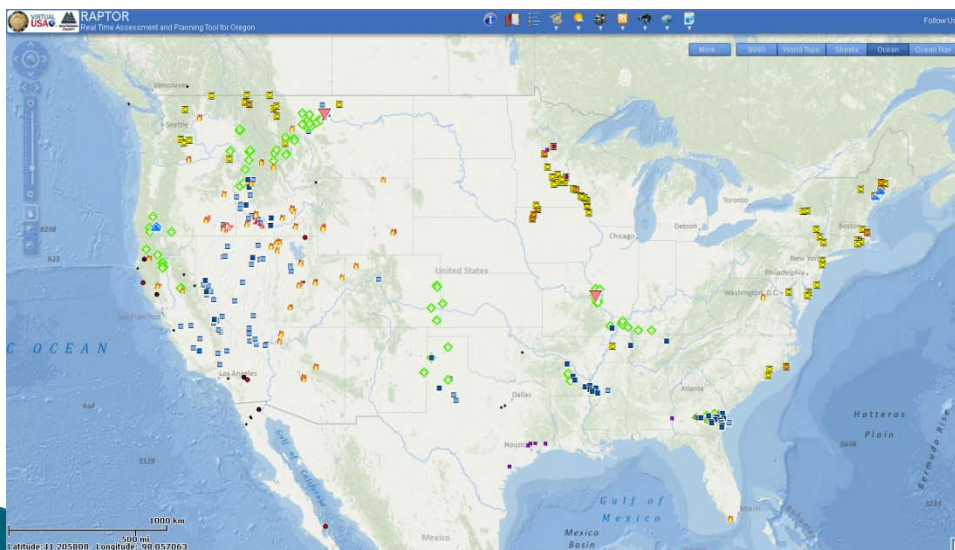
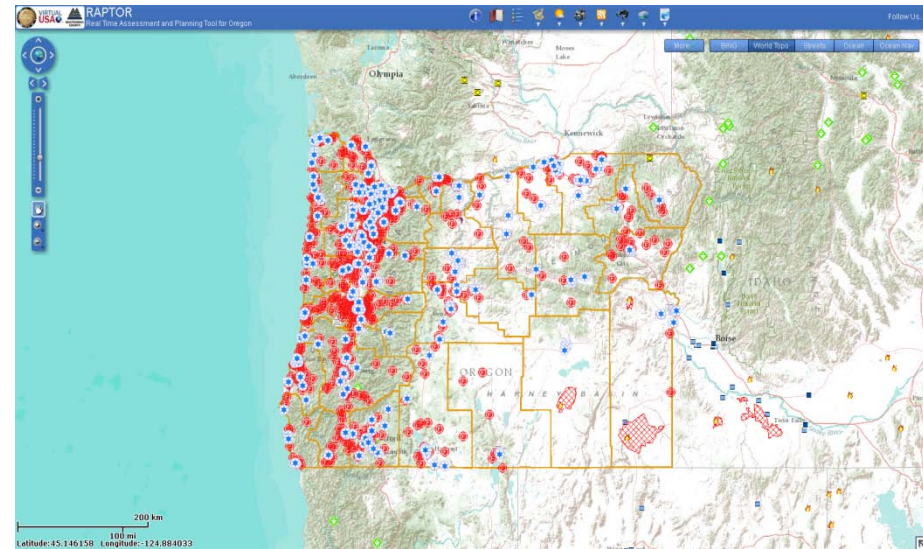
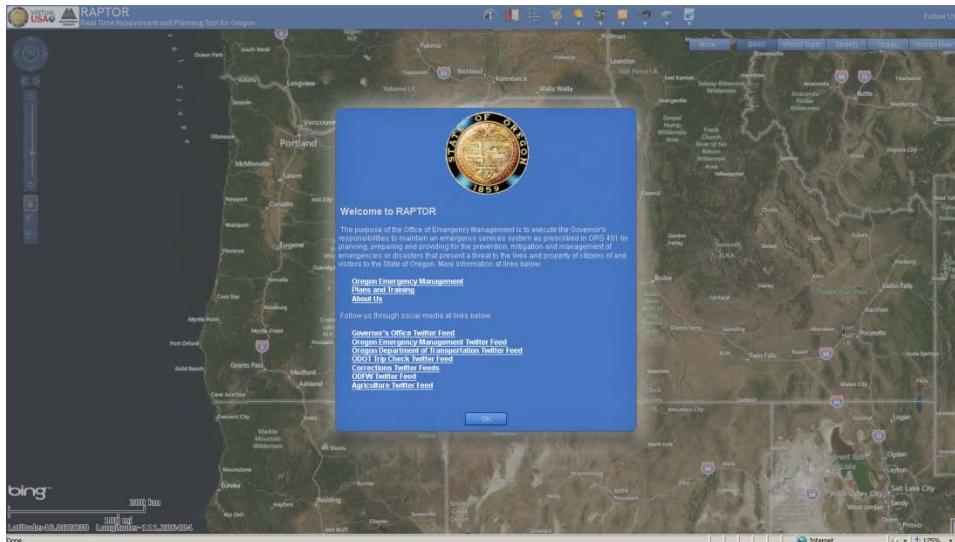


Demonstrated the technical capability to exchange information, but not the operational capacity required to use these tools and information on a sustainable basis.

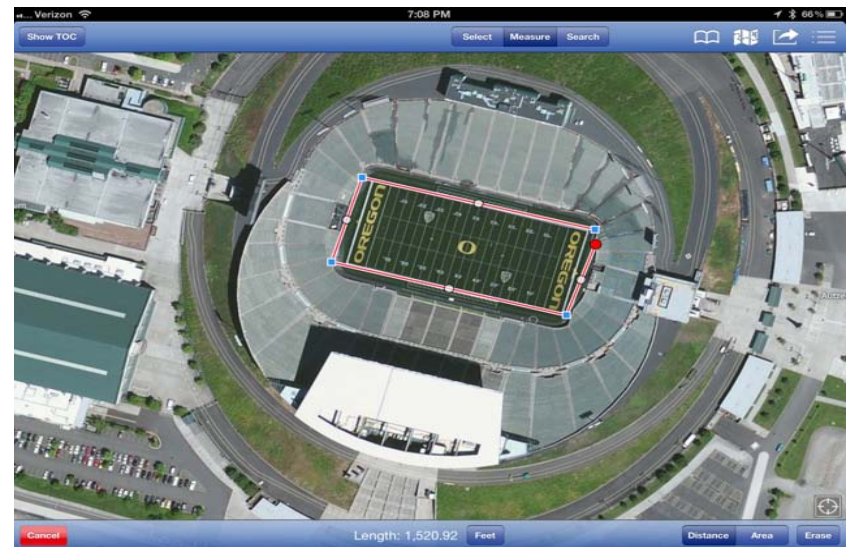
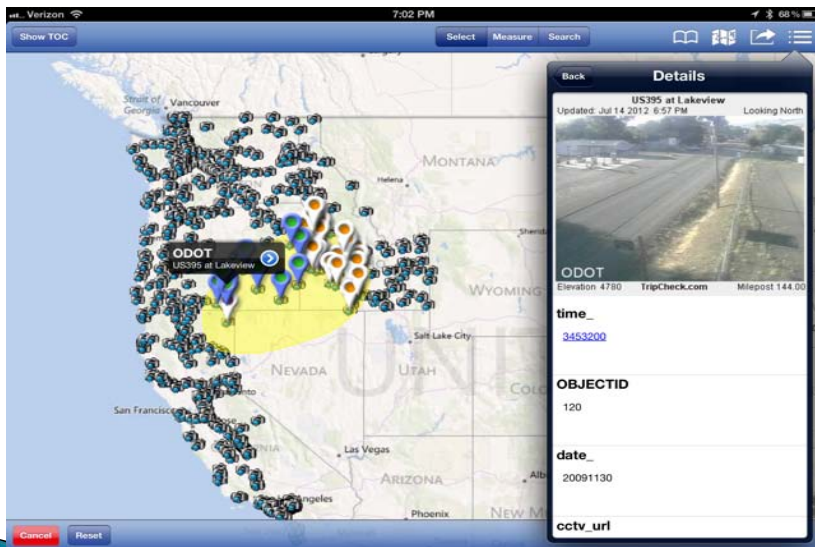
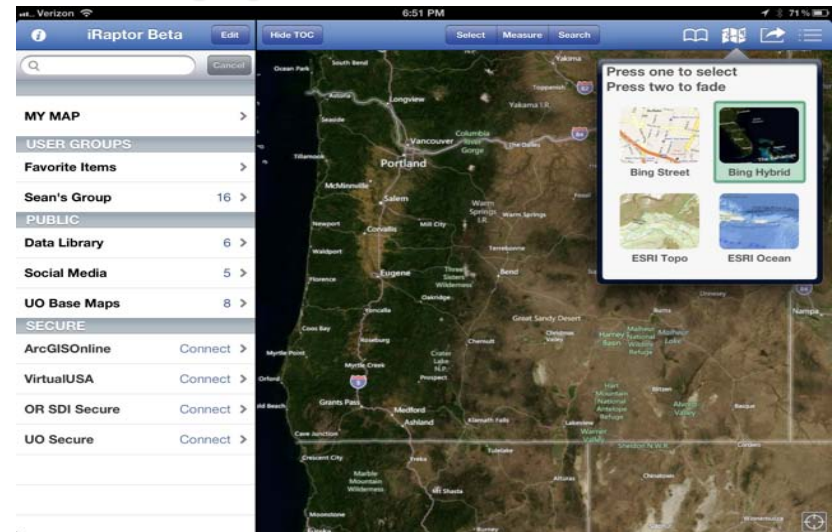
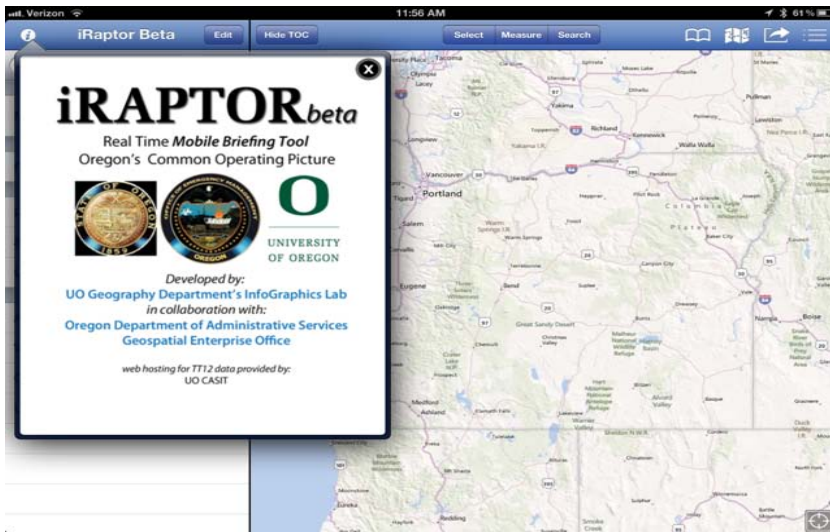
RAPTOR

Real-Time Assessment and Planning Tool for Oregon

RAPTOR – Real Time Assessment and Planning Tool for Oregon



iRAPTOR - Mobile Application



RAPTOR – Access to data & data services

The screenshot displays the RAPTOR (Real Time Assessment and Planning Tool for Oregon) interface. The main map shows Oregon with various data points and overlays. Three primary widgets are visible:

- My Oregon Widget:** A vertical list of Oregon-related entities including Oregon Navigator SDI, OR Dept. of Environmental Quality, OR Water Resources Dept, OR Dept. of State Lands, OR Dept. of Geology and Mineral Industries, University of Oregon, Oregon State University, Portland State University, Lane County, Multnomah County, Washington County, City of Salem, OR, City of Ashland, OR, City of Beaverton, OR, City of Gresham, OR, City of Lake Oswego, OR, City of Tigard, OR, INSIDE IDAHO, CAL-Atlas, Utah, Montana, and Washington DOT.
- Geoportal Find Data:** A search box with a dropdown menu listing various geoportals such as Oregon Explorer, WA Geospatial Clearinghouse, Wyoming GeoLibrary, Montana GIS Portal, and ArcGIS.com.
- vUSA Library:** A search results window showing 176 of 176 items. The results are displayed in a table with columns for Display, Content Type, Title, and Status.

The vUSA Library search results table is as follows:

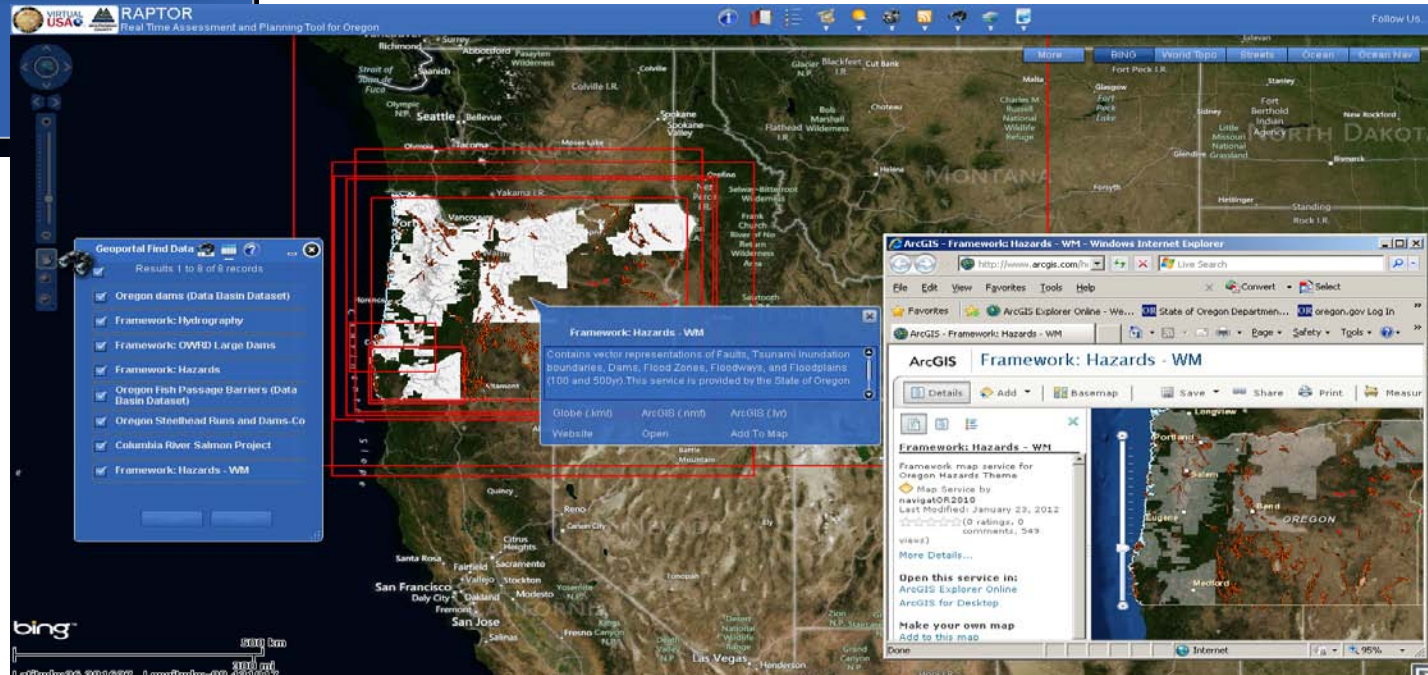
Display	Content Type	Title	Status
	ArcGIS REST	2010 Aerial photography- statewide- high resolution	
	HTML	2010 Oil Spill Information Web Page	
	ArcGIS REST	Alabama EMA REST Services	
	ArcGIS REST	Area Contingency Plan	
	GeoRSS	Boston Marathon Test GeoChat Twitter Group	
	HTML	BP/ESRI MC252 Incident Data	
	HTML	Browseable REST Services	
	KML.KMZ	Caltrans Chain Controls	
	KML.KMZ	Caltrans Lane Closures	
	KML.KMZ	Caltrans Message Signs	
	KML.KMZ	Caltrans Traffic Cameras	
	HTML	Canadian Weather Office - Weather Warnings	
	ArcGIS REST	CT Brownfields - test	
	ArcGIS REST	Designated Evauation Routes	
	KML.KMZ	Direct Relief International (CalEMA BUOC Partner) UICDS Clinic Data (Unified Incident Command Decision Support)	

The interface also includes a Bing map, a scale bar (0 to 200 km), and coordinates: Latitude: 47.565459, Longitude: -122.809047.

Through RAPTOR and iRAPTOR, Core situational awareness capabilities are now in place. Through these Widgets, Oregon can now fully leverage its decade of preparation!

RAPTOR – Access to Portals that utilize Geoportal Toolkit

The “Geoportal” Widget – enables the discovery and use of geospatial resources including datasets, rasters, and web services that are managed within Esri’s Open Source – Geoportal Server tool or resources that are openly accessible on Esri’s ArcGIS.com – via RAPTOR or any other Esri ArcGIS Viewer for Adobe Flex v2.5



RAPTOR – Access to DHS GII (HSIP GOLD 2011)



Map Services **Geocode Services**

GII Services - How to use this page and navigate the map services:

- * Click on any of the service formats on the right hand side of any feature (example: REST, WFS...)
- * Click the arrow for a service title in the leftmost column to explore web service formats available for that feature (example: Agriculture)
- * Copy the URL for any of the service types and paste into your desktop or web application
- * Note: for REST and WFS access, users must accept the HSIP Gold Terms and Conditions

Service Formats

Format	Description
OGC WMS (Web Mapping Service)	Open standards service format defined by the Open Geospatial Consortium . Supported by a wide range of mapping clients.
OGC WFS (Web Feature Service)	Open standards service format defined by the Open Geospatial Consortium . Supported by a wide range of mapping clients.
MapServer	Service format provided by ESRI corporation through their ArcGIS product. Requests are formatted as SOAP commands with results returned as images.
KMLServer	Open standards service format defined by the Open Geospatial Consortium . Supported by a wide range of mapping clients.
REST	Representational State Transfer (REST), provides a simple, open Web interface to services hosted by ArcGIS Server. All resources and operations exposed by the REST API are accessible through a hierarchy of endpoints or Uniform Resource Locators (URLs) for each GIS service published with ArcGIS Server.

Clear Search Type in the boxes below and click enter to find the appropriate service / layer

Group	Service Name	Layers
> HSIP	Agriculture	Animal Aquaculture Facilities , Animal Slaughtering Processing , Beef Cattle Ranches and Farms , Cattle Feedlots , Dairy Cattle Farms , Fruit and Tree Nut Farms , Greenhouse Nursery and Floriculture Production , Hog and Pig Farms , Oilseed and Grain Farms , Other Crop Farms , Vegetable and Melon

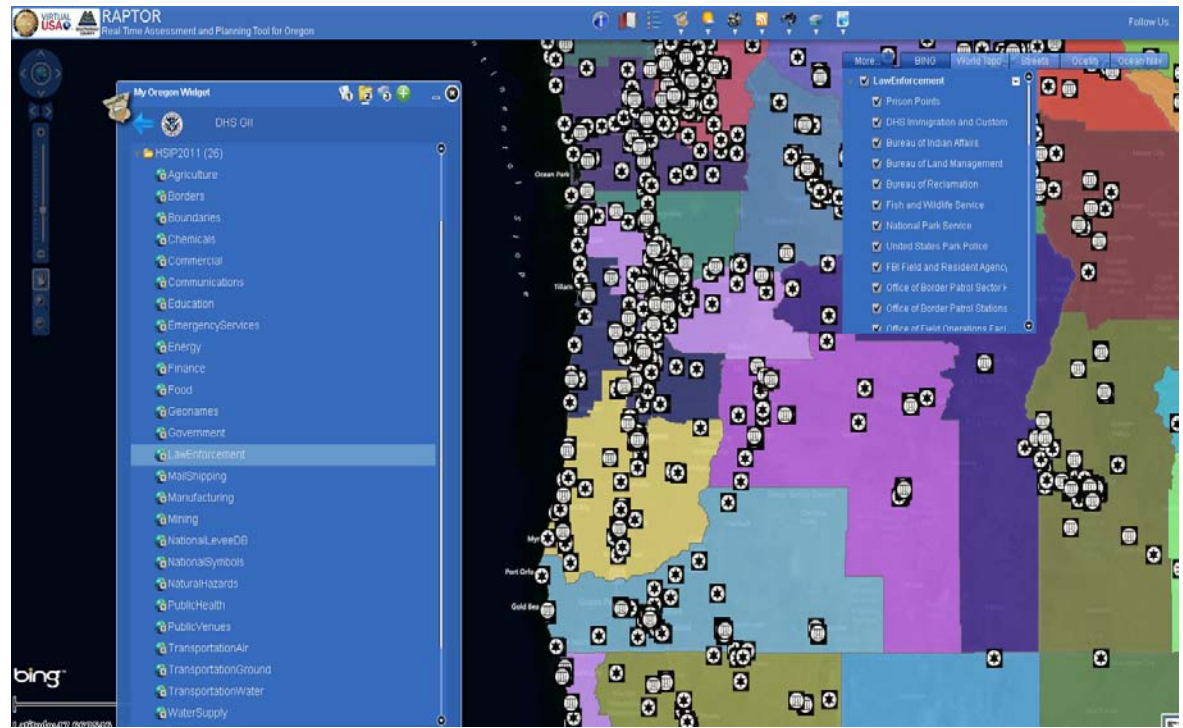
Support

- [Contact](#)
- [FAQ](#)

Quick Launch

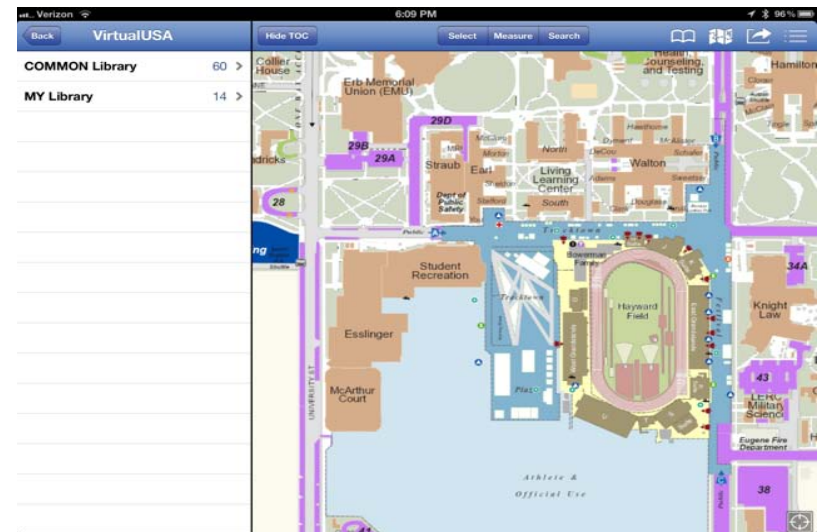
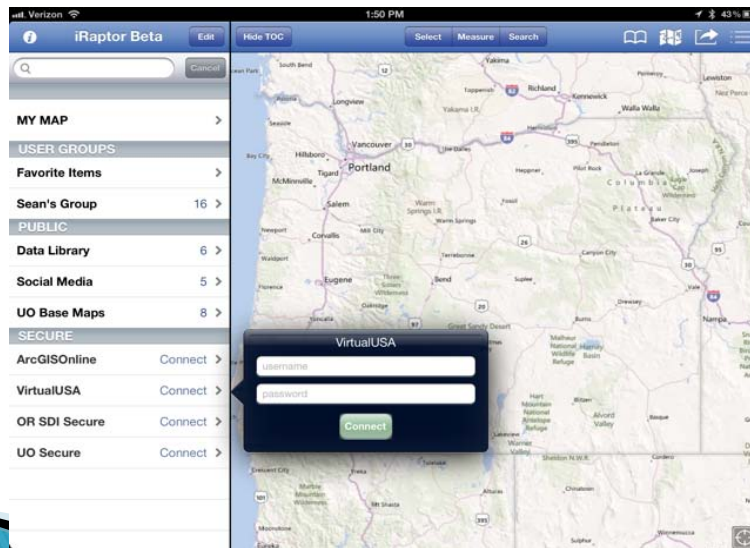
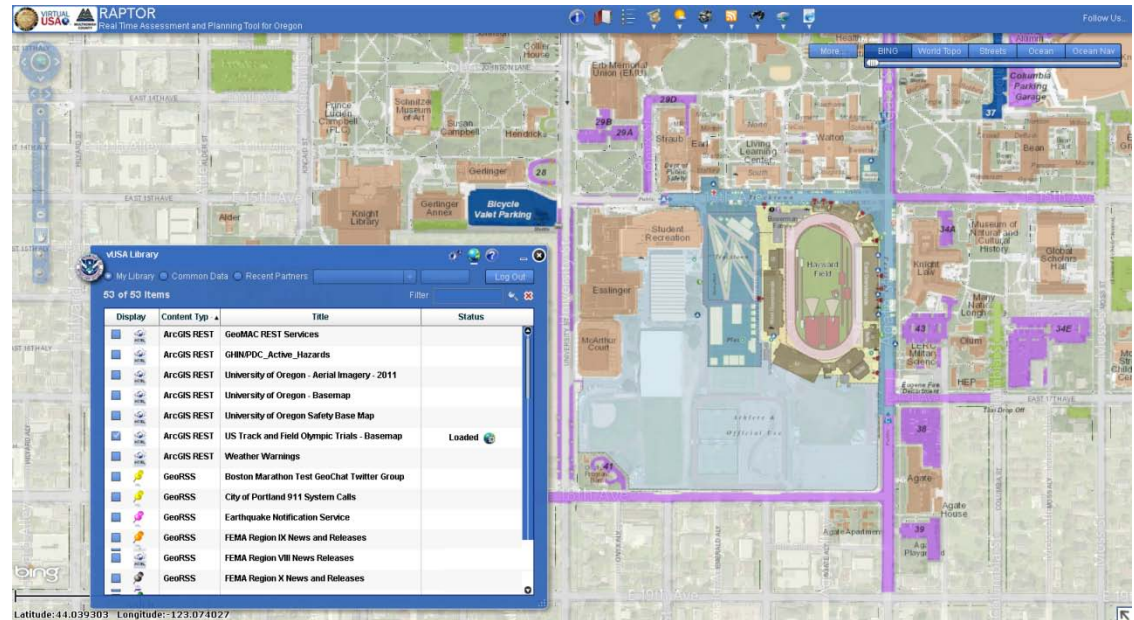
- [OneView](#)
- [GII Services](#)
- [Geocode Services](#)
- [DHS Earth](#)

The “MyOregon” Widget – enables the connection of open and secure REST Services for use within RAPTOR or any other Esri ArcGIS Viewer for Adobe Flex v2.5



RAPTOR/iRAPTOR – Access to data via Virtual USA

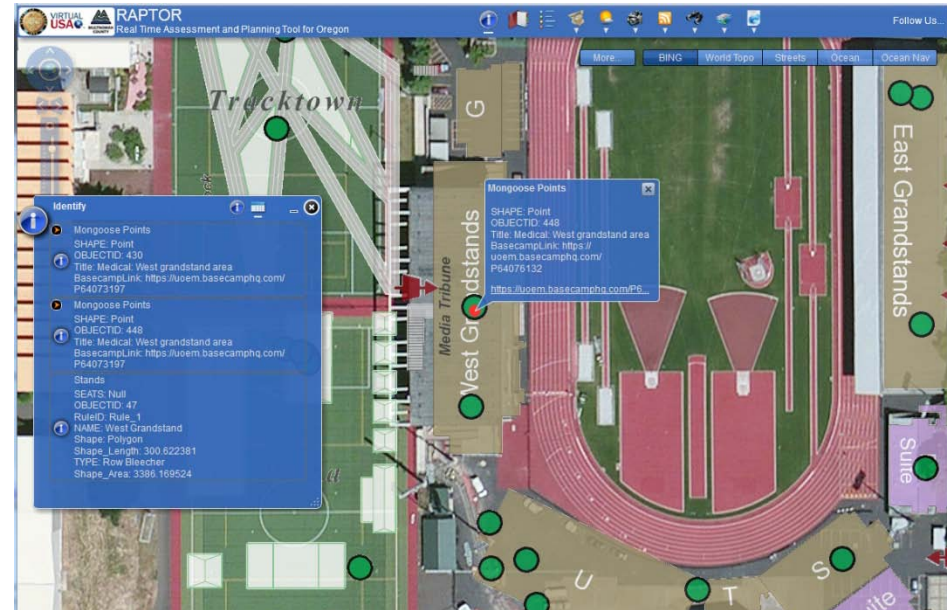
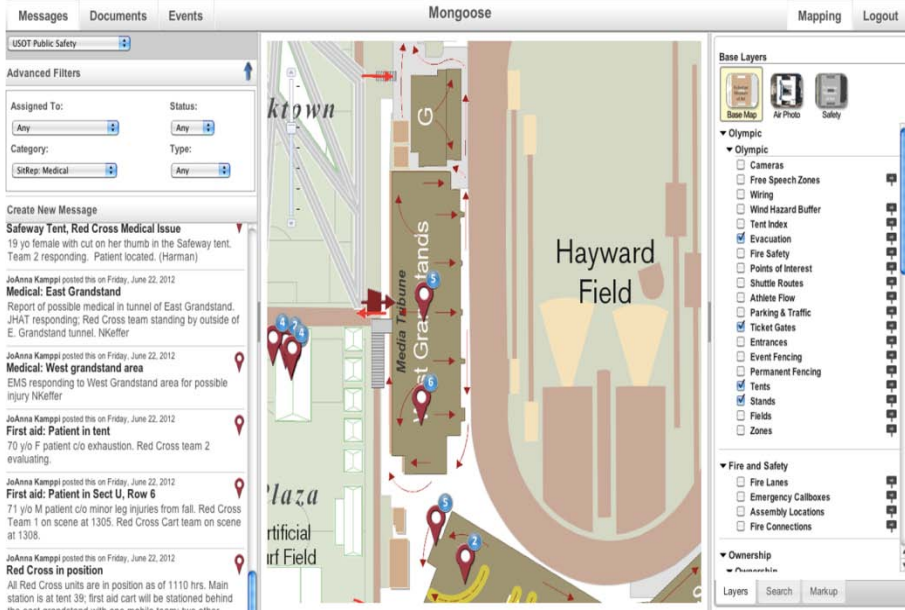
The “vUSA MyLibrary” Widget – enables a user to access the content contributed to the Virtual USA Information Sharing Library by member users/organizations natively from RAPTOR or any other ESRI ArcGIS Viewer for Adobe Flex v2.5



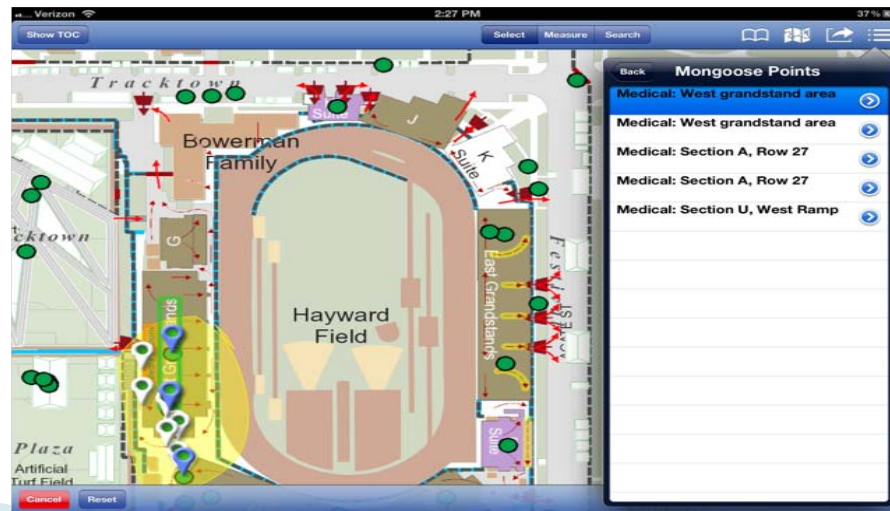
US Olympic Trials – Interoperability

University of Oregon – Mongoose

State of Oregon – RAPTOR

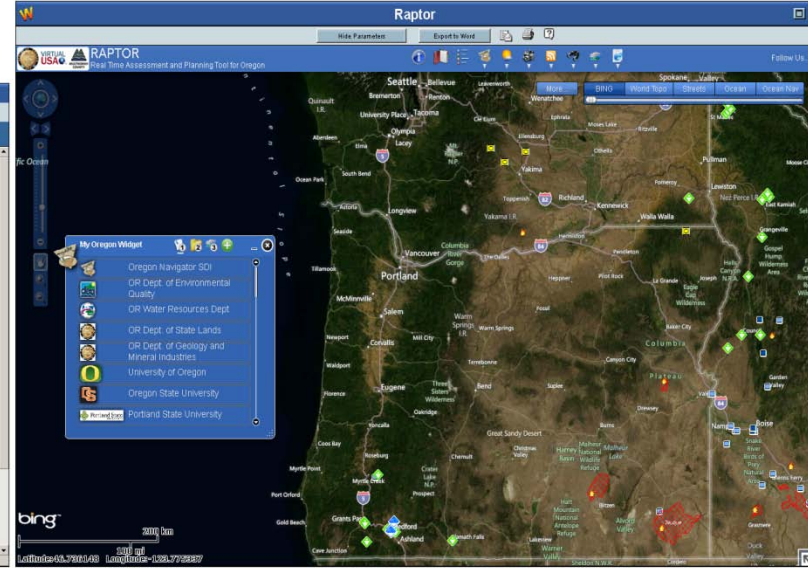
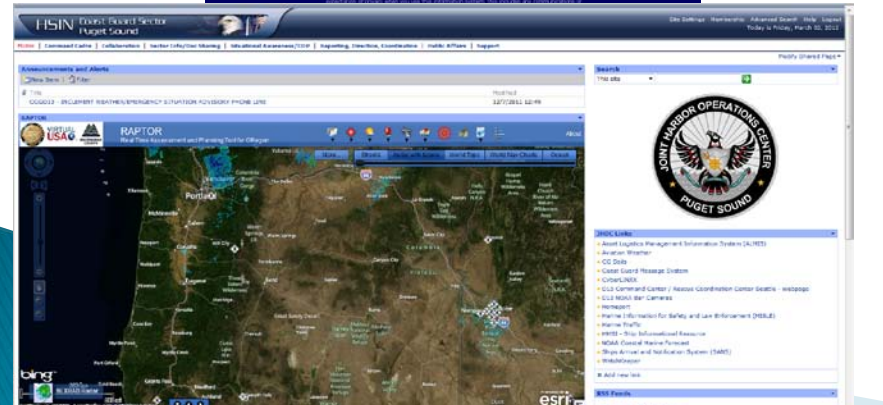
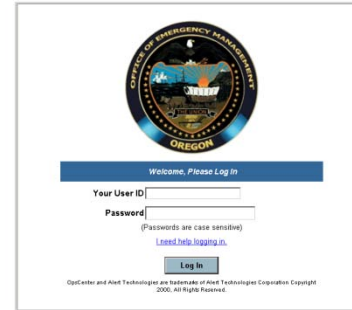
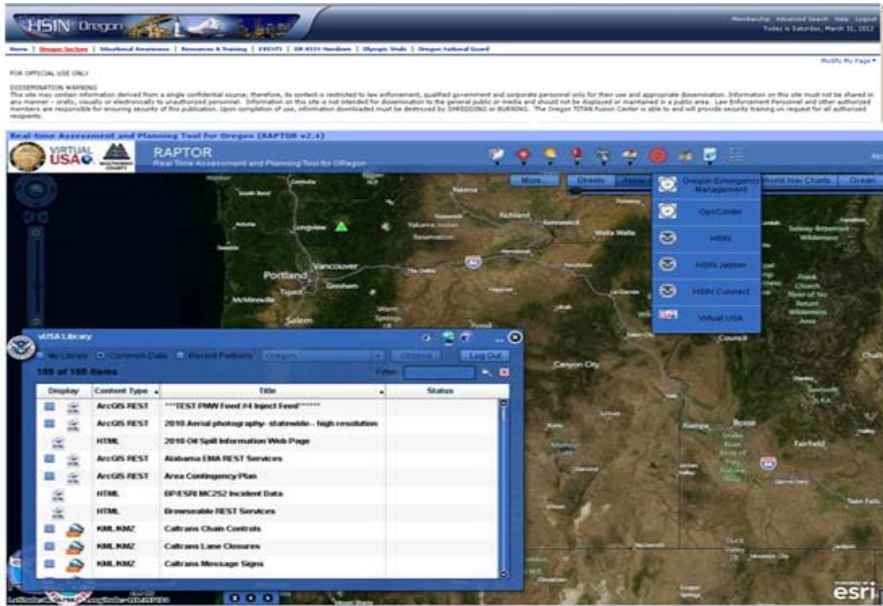


State of Oregon
iRAPTOR
(Mobile iPad App)

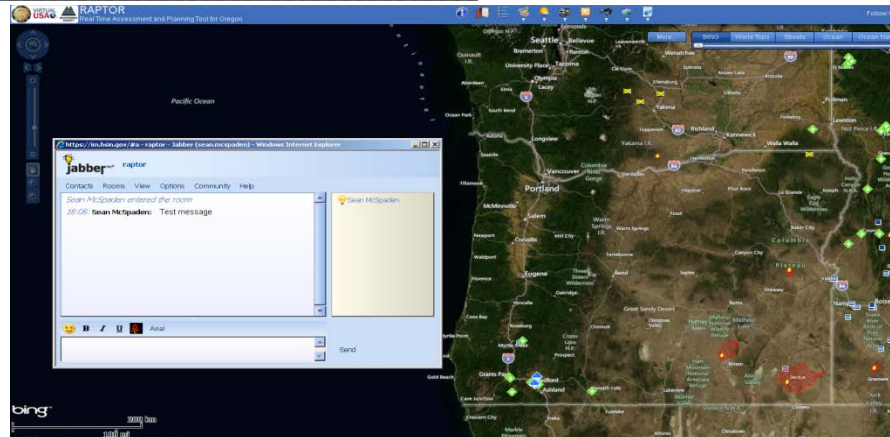
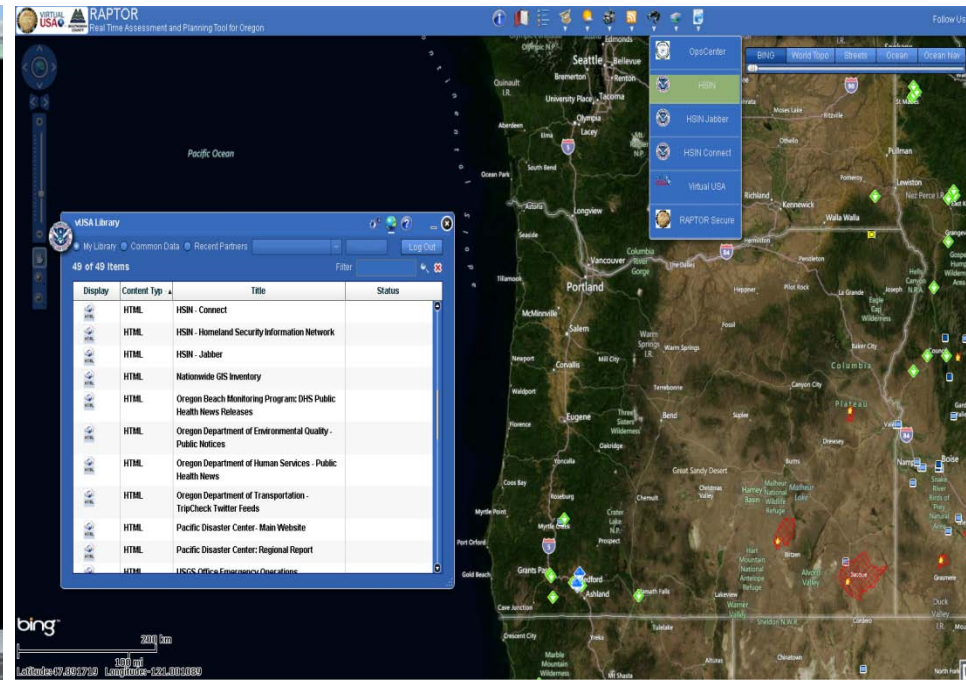
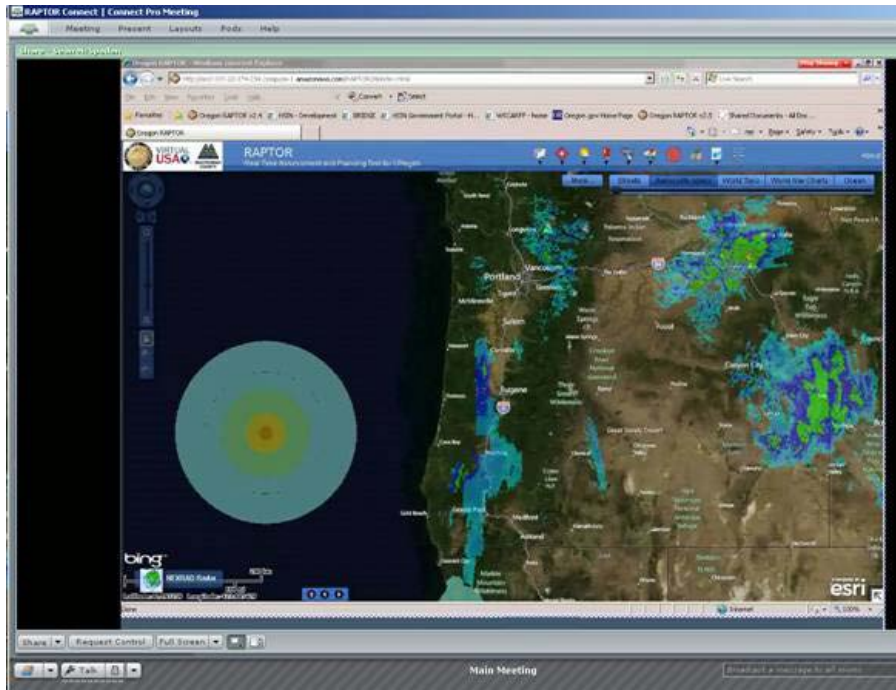


Embedding RAPTOR within other Systems

Oregon OpsCenter Web-based Incident Management System



Access to HSIN, HSIN Tools & vUSA within RAPTOR



National Information Sharing Consortium

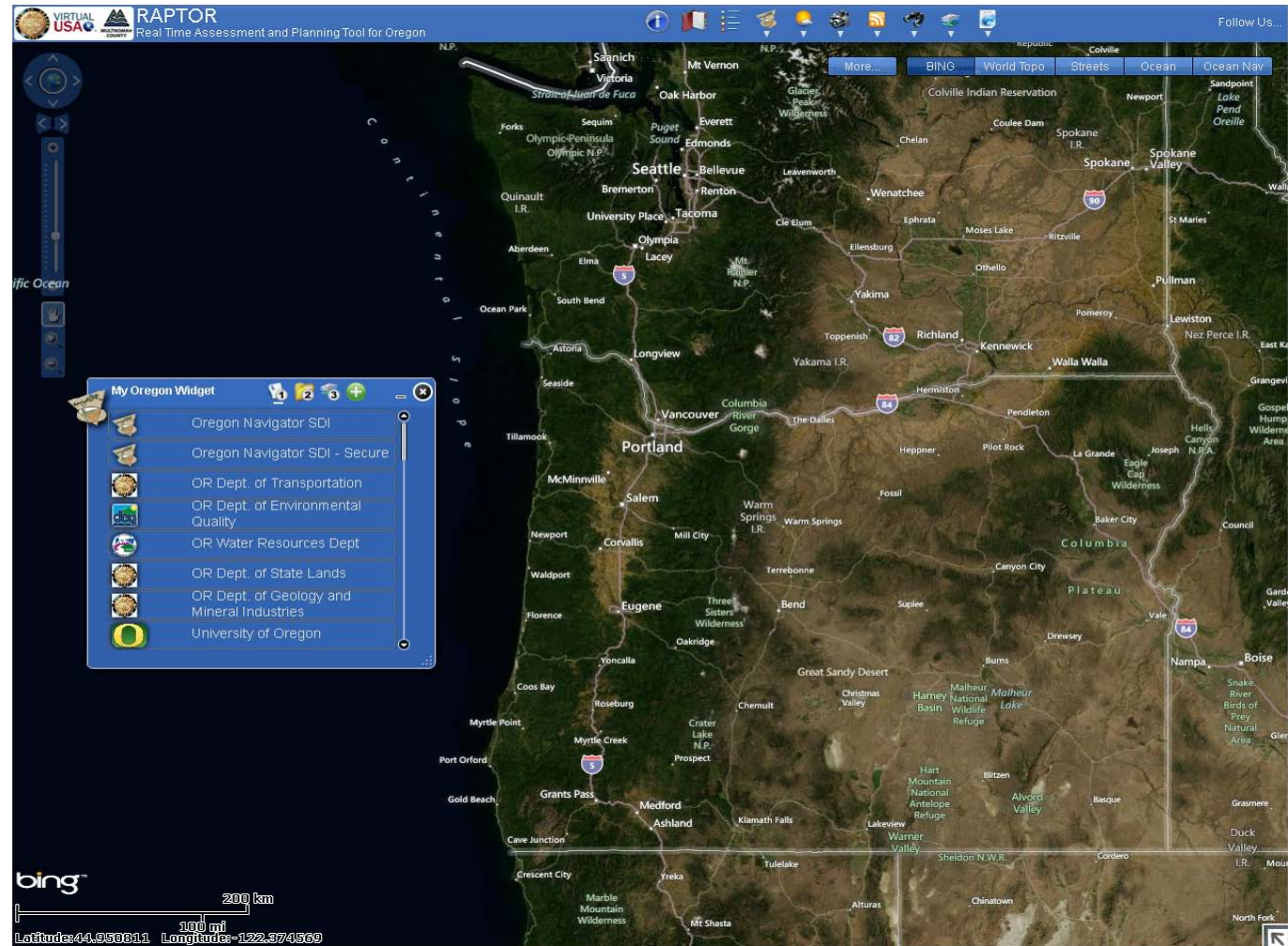
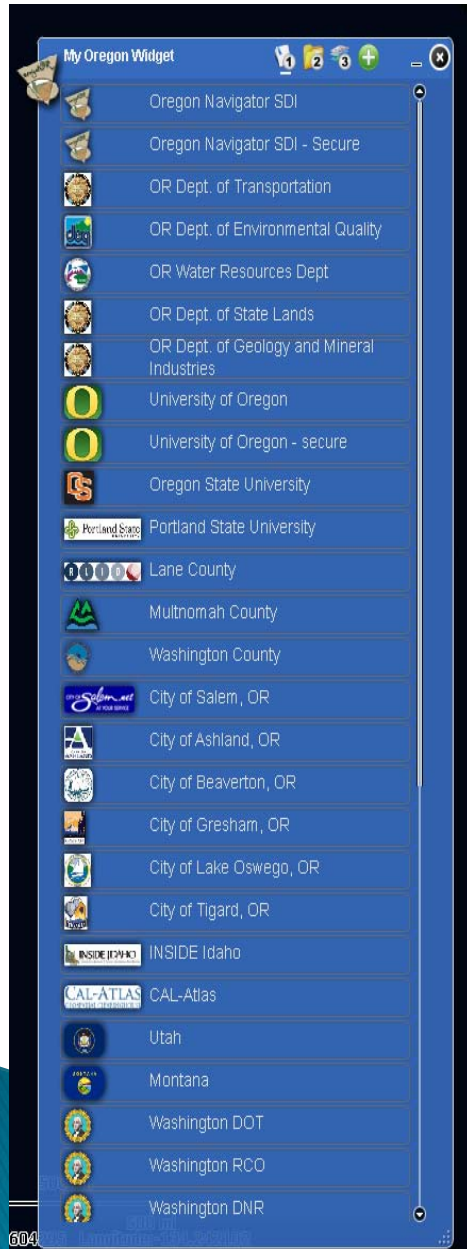


▶ Launched: June 2012

- Emergency Management, IT, GIS Communities
- Federal, Regional, Tribal, State, and Local Government
- Voluntary Information Sharing
 - Governance documents, information sharing plans, standard operating procedures, and software code/documentation, etc.
- Oregon, Virginia, California, City of Charlottesville, VA and City of Charlotte, NC are leading the way in partnership with the Department of Homeland Security First Responders Group (FRG)
- Plan to convene a National Information Sharing Summit in the Fall of 2012

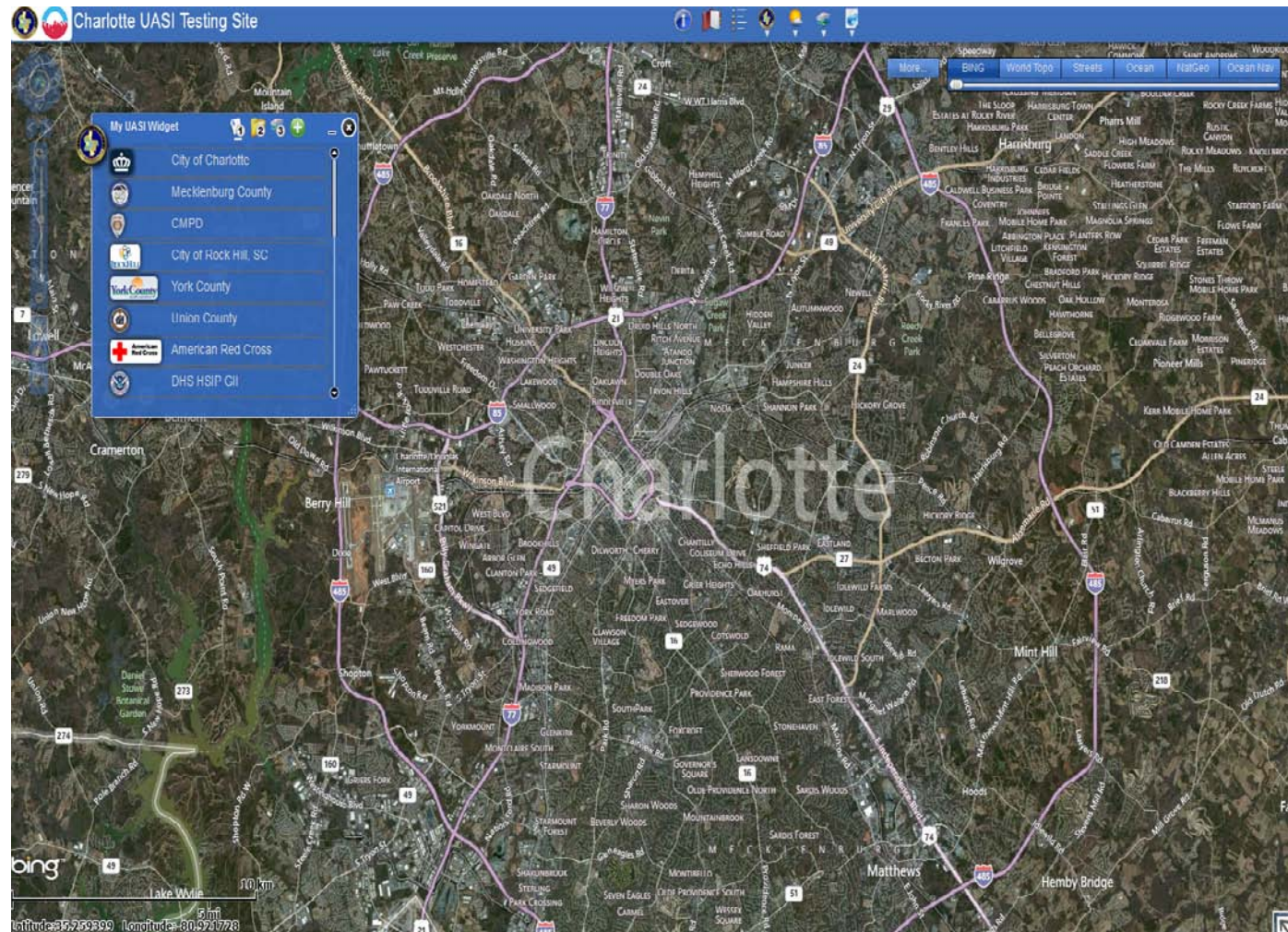
Value of National Information Sharing Consortium

Oregon develops, tests and deploys “MyOregon Widget” within RAPTOR and then.....



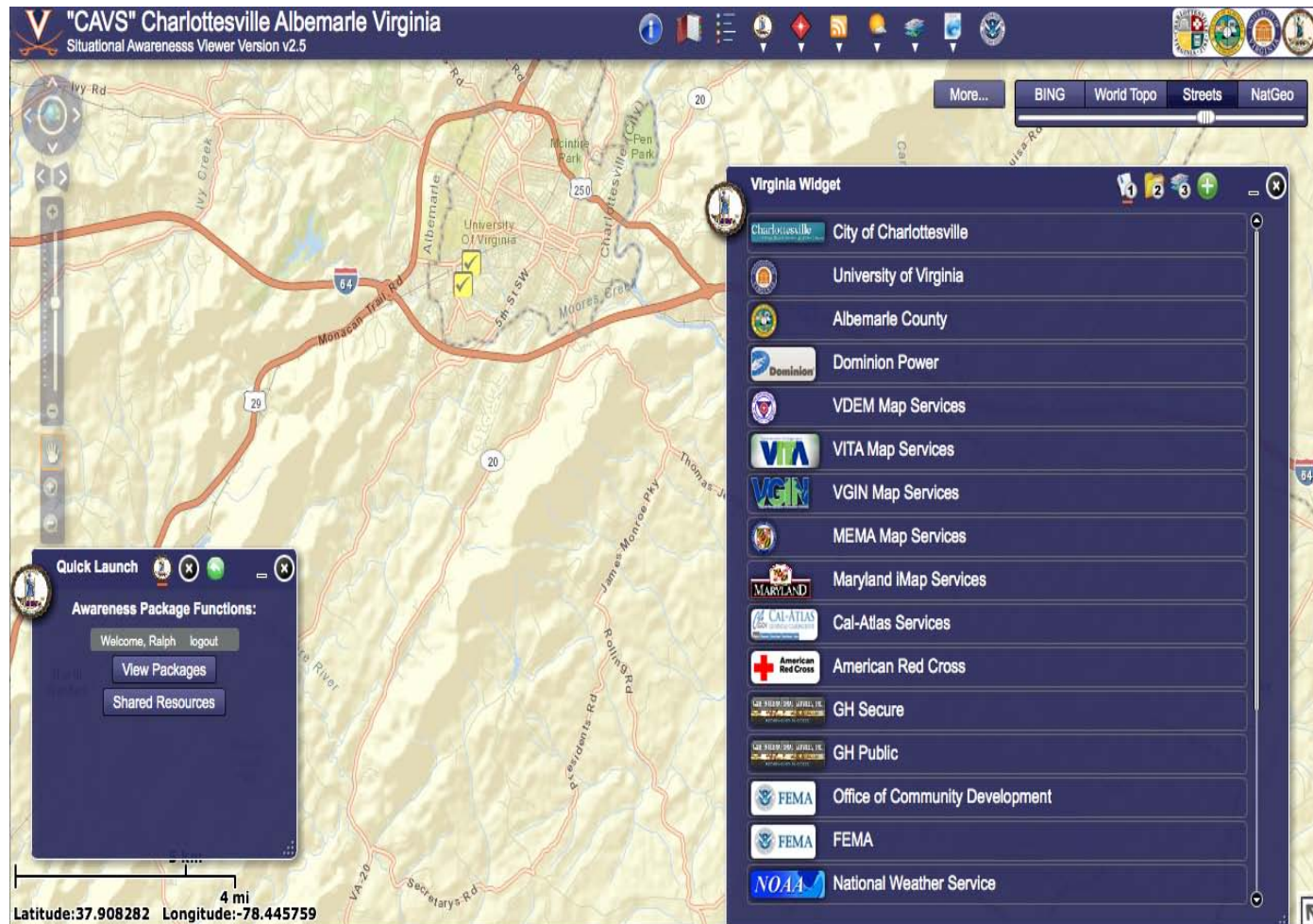
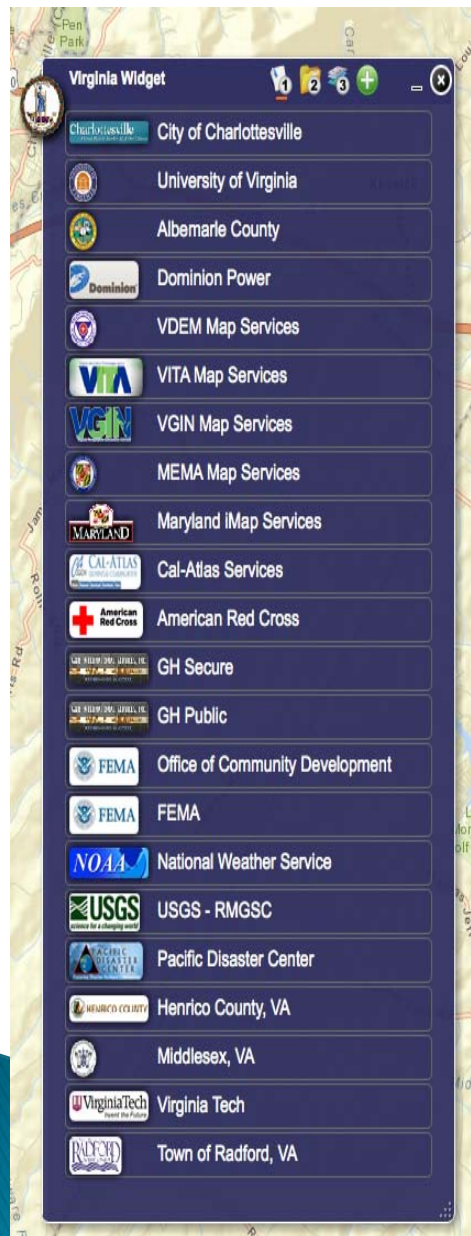
Value of National Information Sharing Consortium

.....Oregon shares “MyOregon Widget” with City of Charlotte, North Carolina – rebranded “MyUASI Widget”



Value of National Information Sharing Consortium

.....Oregon shares “MyOregon Widget” with City of Charlottesville, Virginia – rebranded “Virginia Widget”



The Flooded River....



Contacts

- ▶ Sean McSpaden, Oregon Deputy State CIO
 - Phone: 503-378-5257 | Cell: 503-798-1507
 - Email: Sean.L.McSpaden@state.or.us