



GIS in the Sky

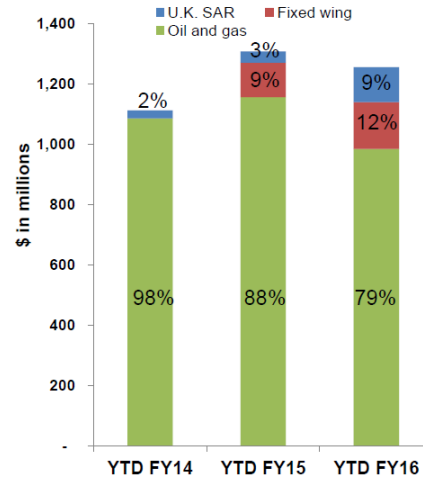
eFlight GT for Flight Tracking

- Who we are
- What we want to achieve
- How we did it
- Where we are heading



Who We Are

- Bristow transports crews for oil and gas companies and provides search and rescue (SAR) services for them and governments alike
- 360 aircraft in ~20 countries with ~5,000 employees
- Target Zero safety culture is the key component of our corporate core values

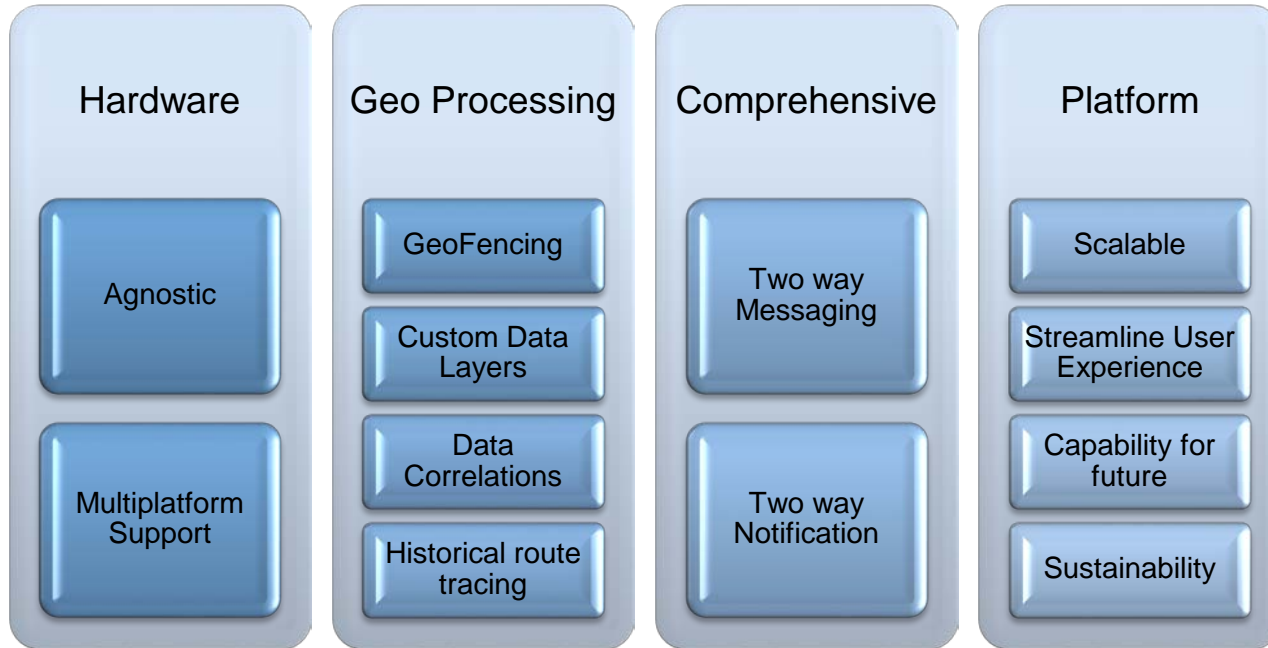


What We Want to Achieve

A flight tracking system that -

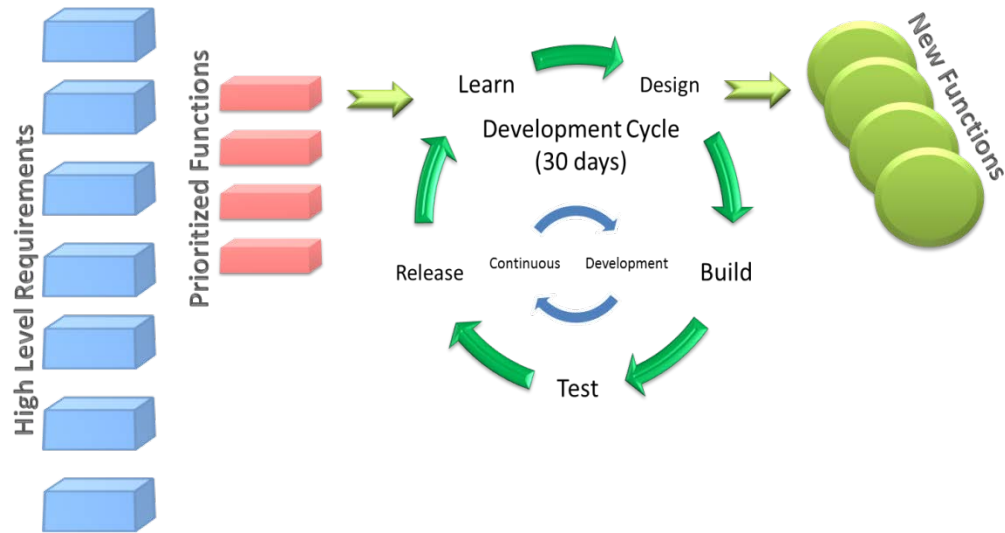
- supports Bristow's emphasis on safety and global standard operations
- provides our clients with improved visibility of their flights
- leverages commercial solutions with a robust and scalable platform
- replaces the legacy custom built system

How We Did It – Select the Right Solution



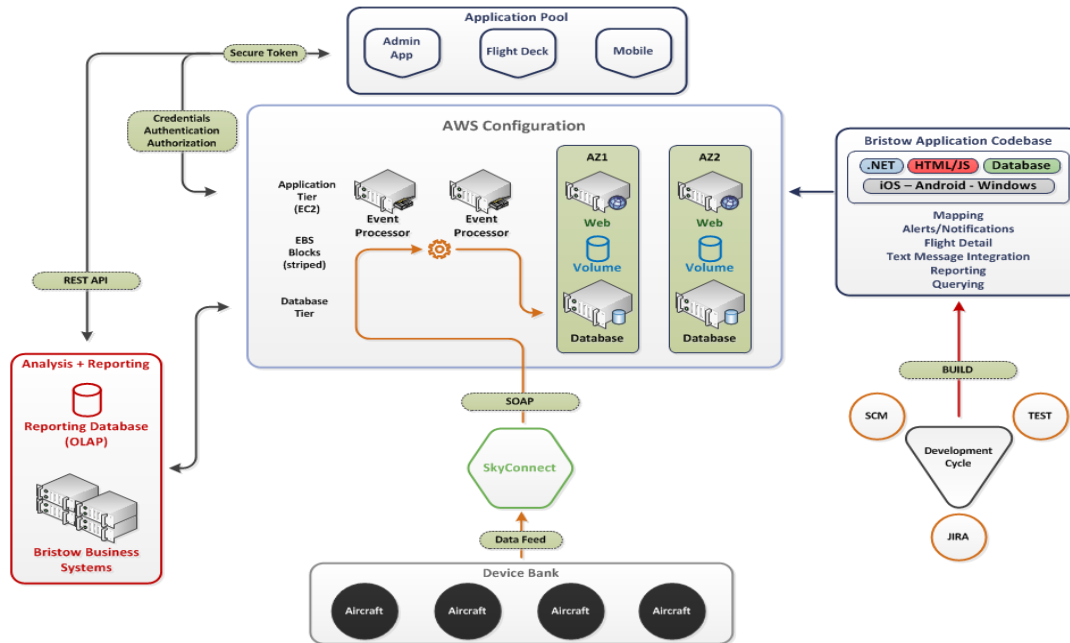
How We Did It – Select the Right Partner

- Camp Hill, PA (10 US Offices – 1 International)
- 120 GIS-Focused Staff
- Esri Gold Business Partner
- Transportation & Logistics || Manufacturing
- Commercial Industry Solutions

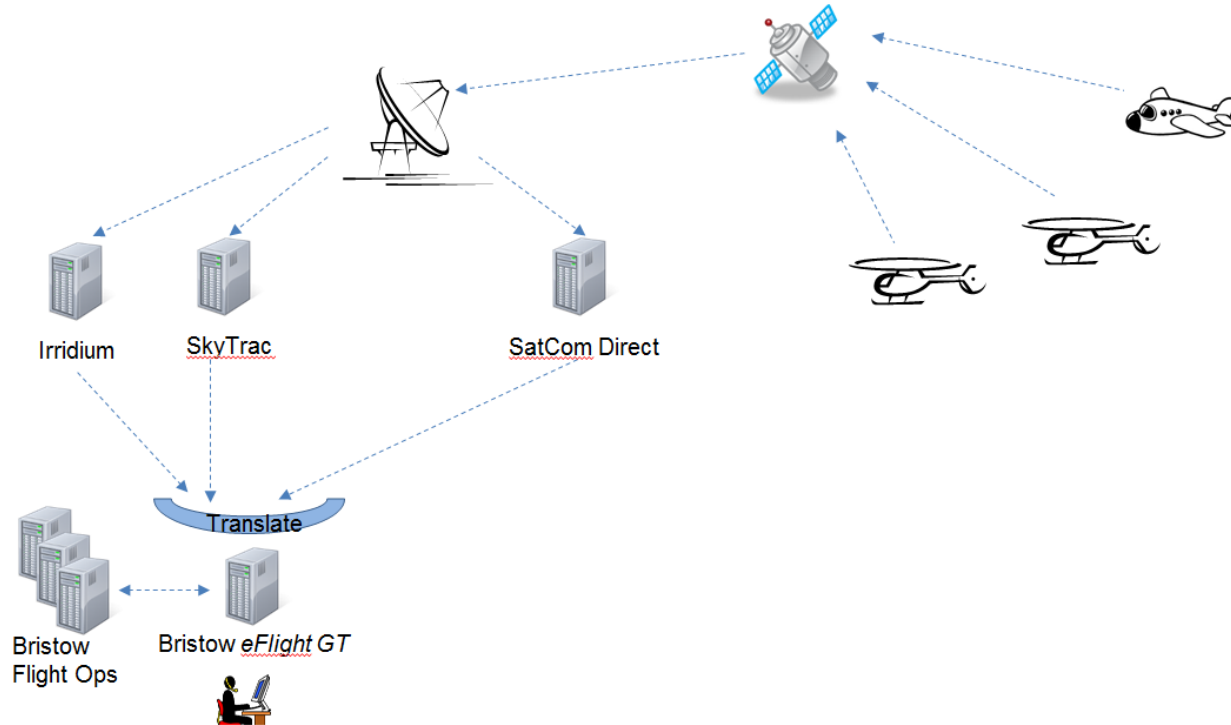


How We Did It – Select the Right Product

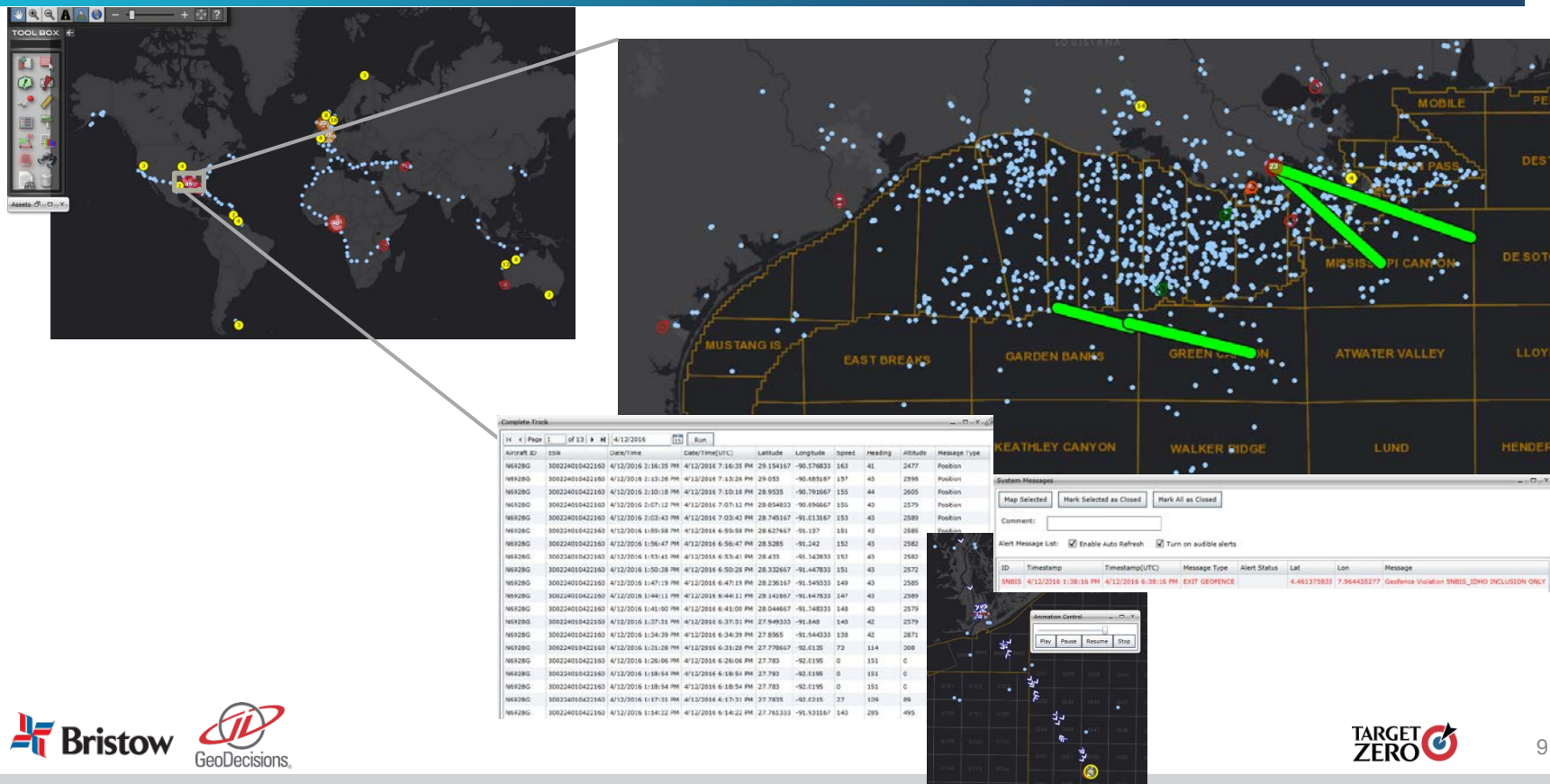
GeoILS Architecture – Amazon Web Services Environment



How It Works



How It Works



How It Works

eFLIGHT GLOBAL TRACKING 871 447 BRJ

FlightStream

Air

Aircraft	Departing	Destination	ETA	POB	Check
447 (L)	SS114		14:51	7	14:51
871	GB260	BOGNO	15:00	10	14:41

Based

Landed

Aircraft	Loc	Due
410	GH59	15:24

eFLIGHT GLOBAL TRACKING

Aircraft ID

Message Queue

Incoming Text Messages

Aircraft	Time	Age	Message
DEL	14:51	00:00:30	TORREX ETE 0:55804 F32.3 F10000 POB: 10 35:54 N 61 20:67 W

Warnings & Alerts

Aircraft	Time	Warning	Age	AgeGroup
871	14:52	In-Motion No Plan	00:00:23	Poling

Active Tasks

Outgoing Messages

Aircraft	Sent	Message	User
890	14:47	Auto-PP TO MC305	45473
TKD	14:40	Auto-PP TO IMML	45473
BRJ	14:33	LB AT PHNAF	55933
BRJ	14:02	HAVE YOU LANDED	55933
871	13:55	Auto-PP TO BL50	45473
871	13:37	Auto-LC TO GB260	55936
692	13:29	Auto-PP TO GND	65424
TAJ	13:25	LB AT TTPP	65424
692	13:19	Auto-30 MIN LND AT GB215	55936
871	13:15	Auto-PP TO GB260	55936



eFLIGHT GLOBAL TRACKING 871 447 BRJ

Flight Strip

Activity Detail

Aircraft: **871** (871) **ERC** (10) **Departing** (15:00) **ATO** (13:55)

Destination (BOGNO) **ETE** (10:00) **POB** (10) **Fuel State** (1.5)

Customer (HESS) **Pilot** (ERRINGTONSANTOS) **ETA** (15:00) **ATA** (00:00)

Remarks (PLACEHOLDER)

Next Flight Action (Next)

Active Text Message

No incoming text messages for this aircraft

Active Warnings & Alerts

No incoming warnings for this aircraft

Tasks

No task present for this aircraft

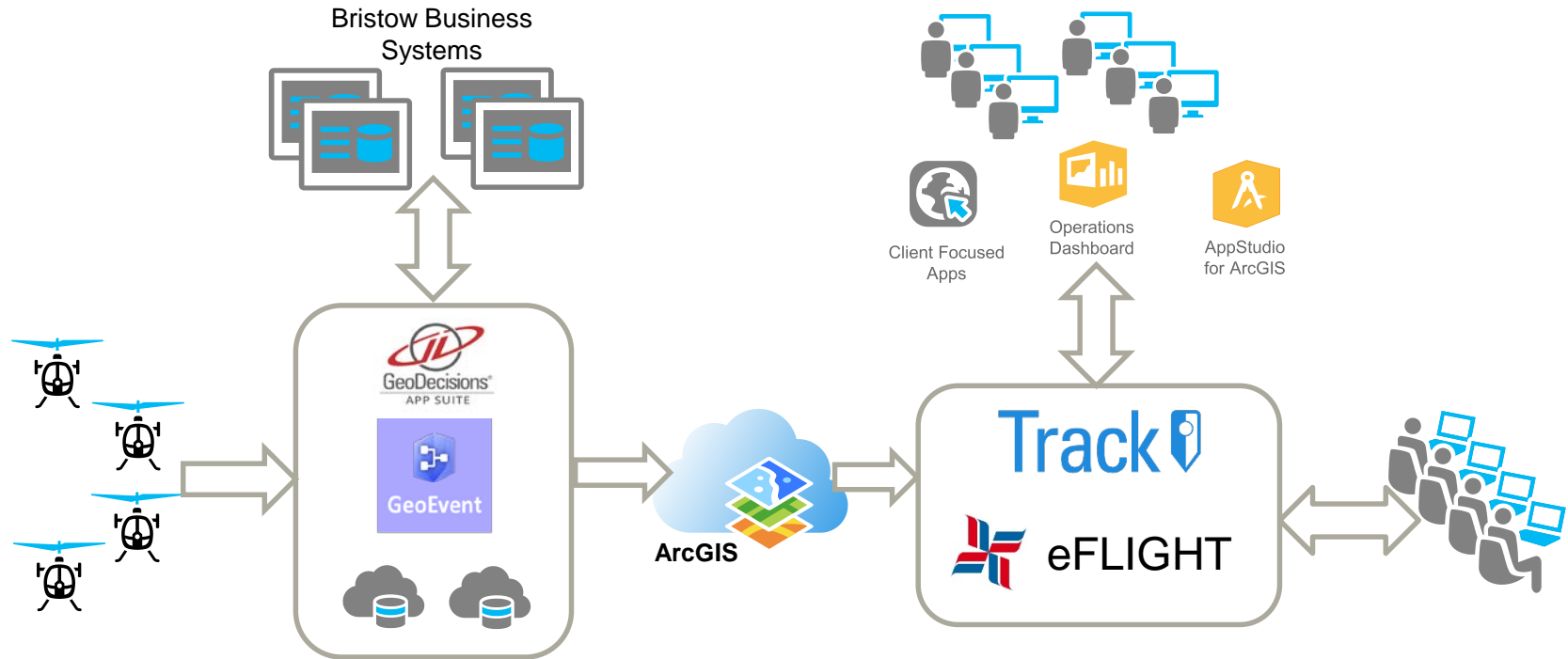
Activity History

Departing	Destination	ATA	ATO	ETE	ETA	POB	Fuel	Contract	Pilot	User	Type	InOp	Job / Flight
GB260	BOGNO	00:00	13:55	65	15:00	10	1.5	HESS	ERRINGTONSANTOS	RLA	FLP	N	
GB260	BOGNO	00:00	13:55	65	15:00	10	1.5	HESS	ERRINGTONSANTOS	DEO	FLP	N	
GB260	BOGNO	00:00	13:55	65	15:00	10	1.5	HESS	ERRINGTONSANTOS	DGA	FLP	N	
GB260	BOGNO	00:00	13:36	30	14:06	5	1.2	HESS	ERRINGTONSANTOS	RLA	LCL	N	
GB260	BOGNO	00:00	13:36	30	14:06	5	1.2	HESS	ERRINGTONSANTOS	RLA	LCL	N	
EC373	BOGNO	00:00	13:15	30	13:45	5	1.5	HESS	ERRINGTONSANTOS	RLA	FLP	N	
EC373	BOGNO	00:00	13:15	30	13:45	5	1.5	HESS	ERRINGTONSANTOS	DGA	FLP	N	
EC373	BOGNO	00:00	13:15	30	13:45	5	1.5	HESS	ERRINGTONSANTOS	RLA	FLP	N	
EC373	BOGNO	00:00	13:15	30	13:45	5	1.5	HESS	ERRINGTONSANTOS	RLA	LCL	N	

Where We Are Heading – Bristow's View

- Improve user experiences
- Deliver data analysis and reporting
- Provide mobile access
- Integrate with enterprise systems

Where We Are Heading – Product Roadmap



Assets

Geofences

Layers

Alerts

Locations

Settings

Sign Out

Assets > 300234062327200 > History

Asset History

1: 10:35:40 AM | 04-21-2016

2: 10:27:35 AM | 04-21-2016

3: 10:25:30 AM | 04-21-2016

4: 10:23:29 AM | 04-21-2016

5: 10:20:27 AM | 04-21-2016

6: 10:19:26 AM | 04-21-2016

7: 10:16:24 AM | 04-21-2016

8: 10:14:23 AM | 04-21-2016

9: 10:10:20 AM | 04-21-2016

10: 10:08:19 AM | 04-21-2016

1

2

3

4


5

...


»

Show All (100)


The map displays the coastal region of West Africa, specifically Benin and parts of Nigeria and Ivory Coast. Numerous blue circular markers, each containing a white number, are plotted across the landmass, representing tracked assets. The markers are densely clustered in the southern coastal areas, particularly around the Port of Lagos and the Benue River delta, and more sparsely distributed inland. Key geographical features include the Benue River, Niger River, and various cities such as Benin City, Uromi, and Port Harcourt. The map interface includes a sidebar on the left with controls for zooming in (+), zooming out (-), searching (magnifying glass), and a location pin icon. An inset map in the bottom left corner provides a broader geographical context. The Esri logo is visible in the bottom right corner.




Assets




Geofences




Layers




Alerts



Locations



Settings



Sign Out

Assets > 300234062327200 > History

Asset History

1: 10:35:40 AM | 04-21-2016

2: 10:27:35 AM | 04-21-2016

3: 10:25:30 AM | 04-21-2016

4: 10:23:29 AM | 04-21-2016

5: 10:20:27 AM | 04-21-2016

6: 10:19:26 AM | 04-21-2016

7: 10:16:24 AM | 04-21-2016

8: 10:14:23 AM | 04-21-2016

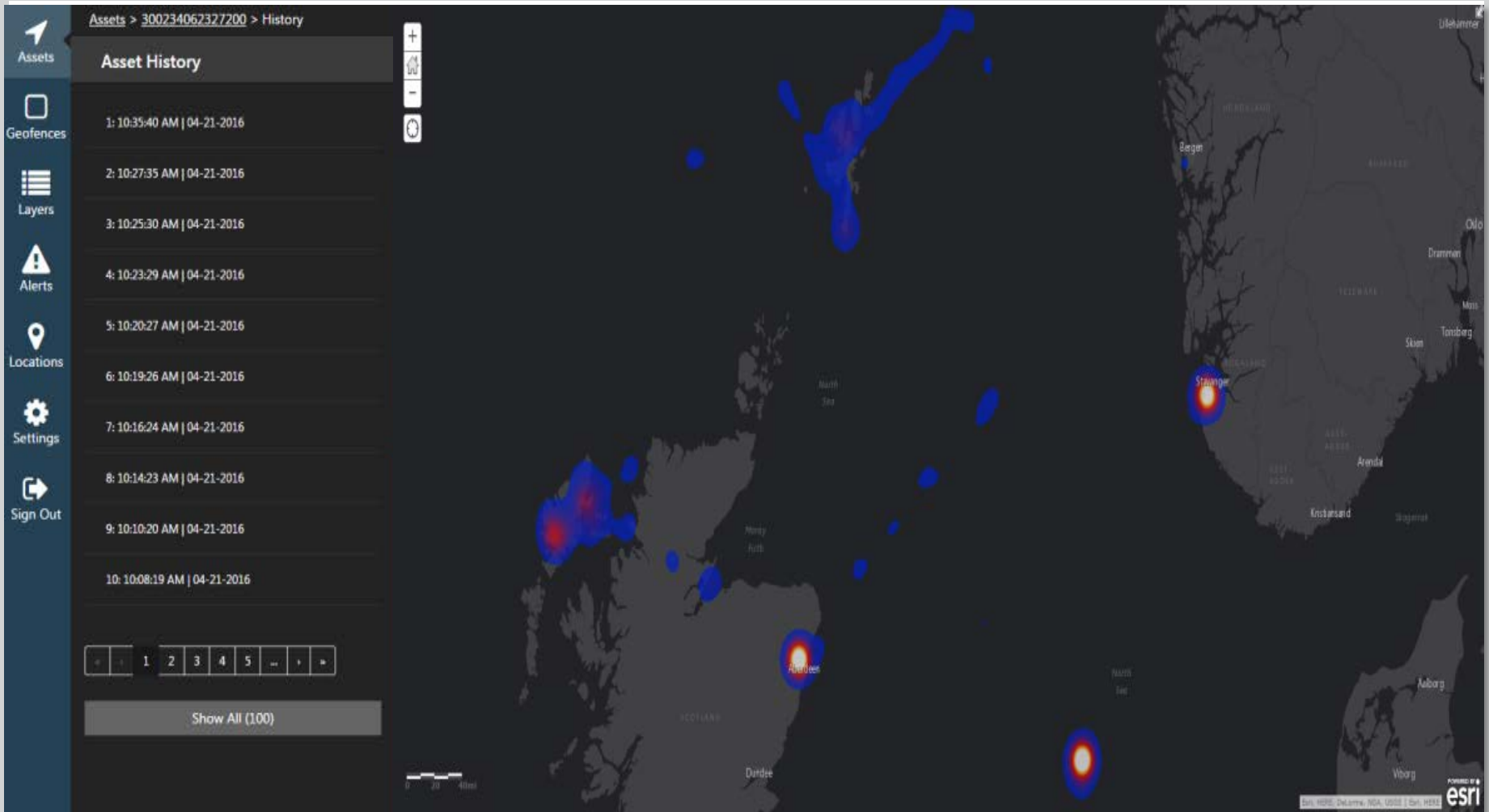
9: 10:10:20 AM | 04-21-2016

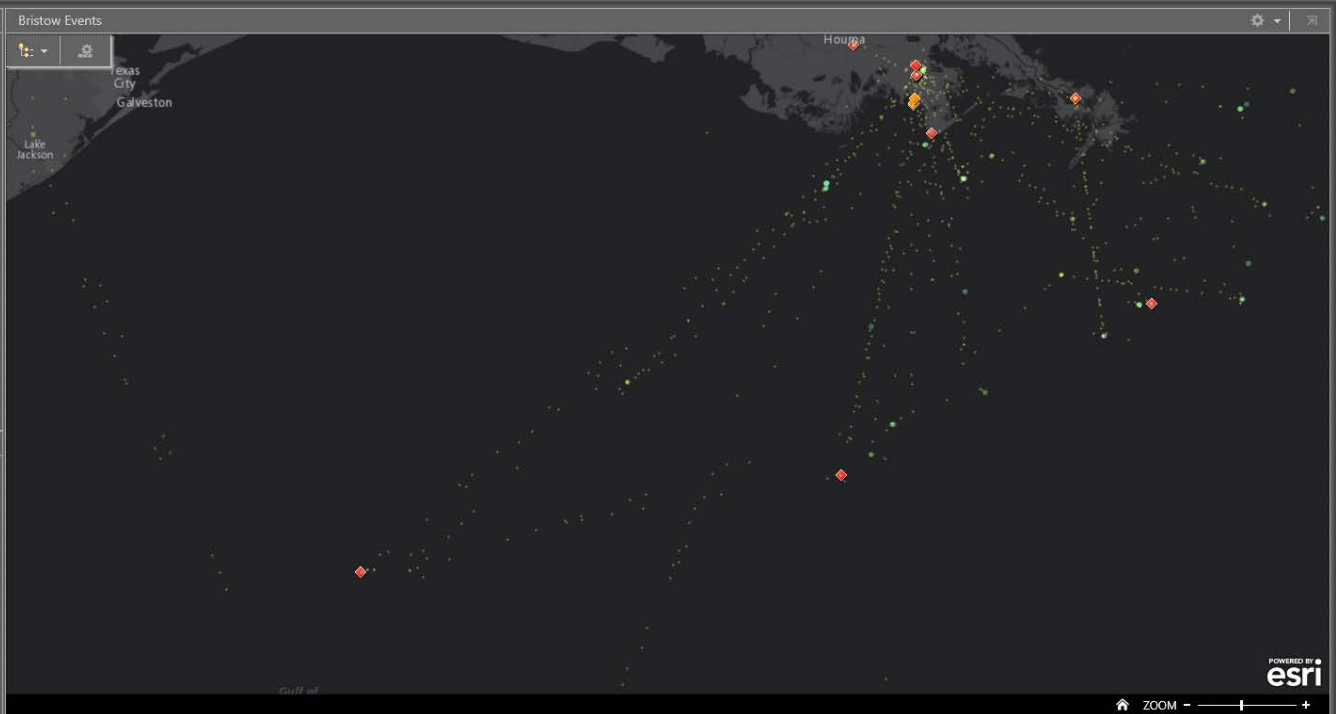
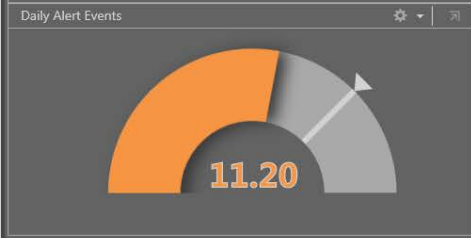
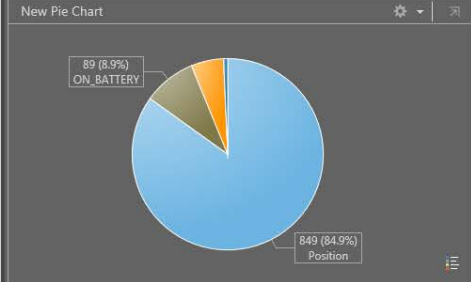
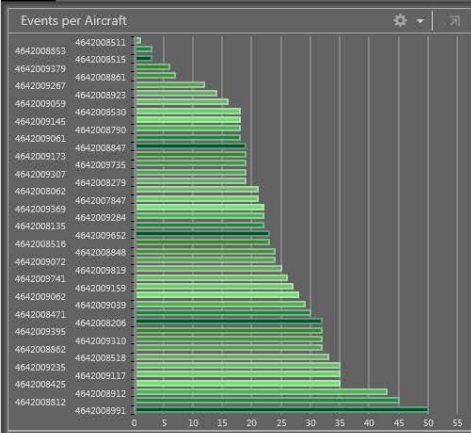
10: 10:08:19 AM | 04-21-2016

12345...>>

Show All (100)

The map displays a dark-themed view of the Gulf of Mexico coastline. A dense trail of red and yellow dots represents the asset's movement, starting from the top right and extending down the coast. The trail is composed of many small dots, with some larger dots in red and yellow. The map includes labels for various locations: The Woodlands, Beaumont, Charles, Houston, Sugar Land, Rosenberg, Texas City, Galveston, Bay City, and Port of Mexico. A scale bar at the bottom left indicates 0, 1.5, and 3.0 miles. The Esri logo is in the bottom right corner.



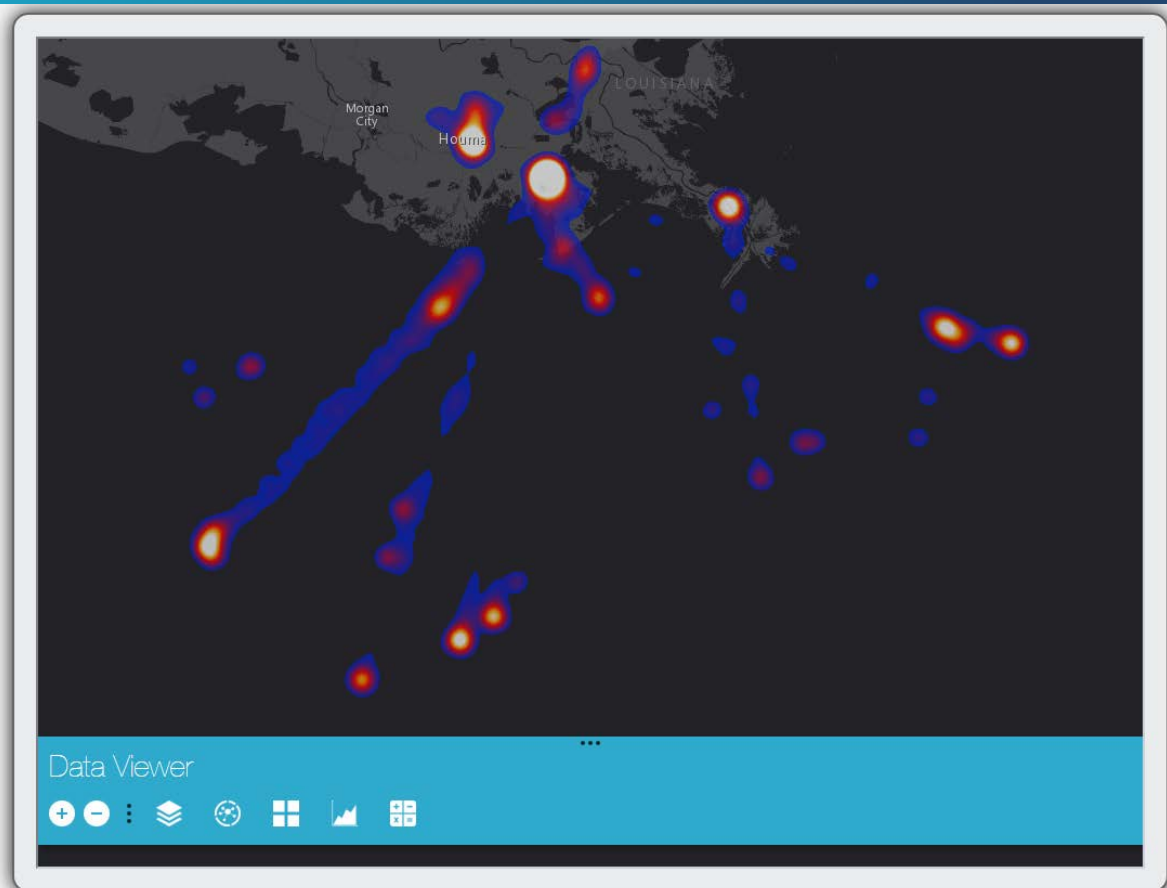


Daily Utilization

3.66 Flights per Aircraft

Active Waypoints

ZONEN
ZONEE
ZD
ZARM
YRIA



Questions





Sophy Liu – sophy.liu@bristowgroup.com
Brian Smith – bjsmith@geodecisions.com