



BRINGING OUT THE BEST



Automating the Publication of Geological, Geophysical, and Engineering Data into ArcGIS Portals

Nathan Wood & Camilo Rodriguez

Introduction

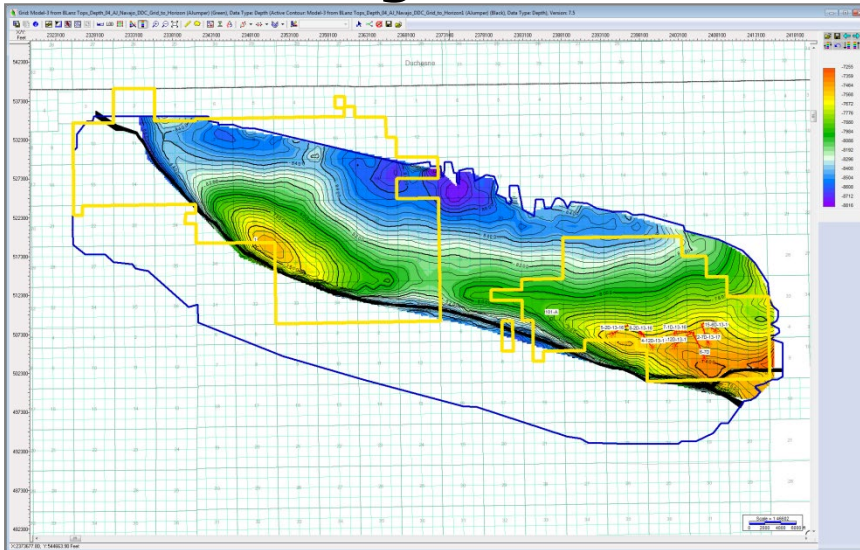


- Web GIS has quickly become the easiest way to share spatial data within an organization
- Geoscience data formats are often proprietary and very difficult to extract
- IHSM and EnerVest have been working on a solution to streamline the extraction of geoscience data into formats readily consumable by ESRI software

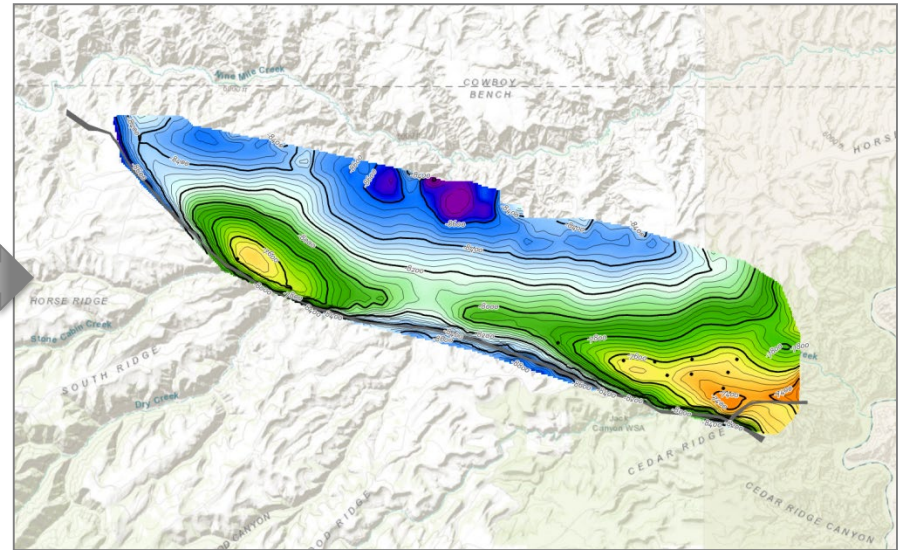
Old Time-consuming Workflow

1. Export the horizon with attributes from Kingdom
2. Open the layer in Global Mapper to set the projection
3. Export from Global Mapper as Geotiff
4. Import the horizon into ARCGIS
5. Manually modify the color palette within ARCGIS
6. Upload resulting horizon into Portal

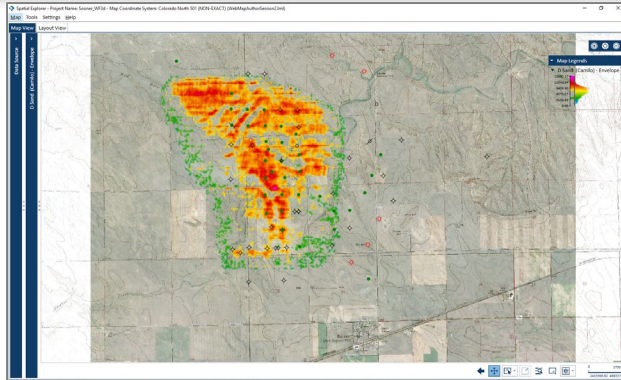
Kingdom



Portal



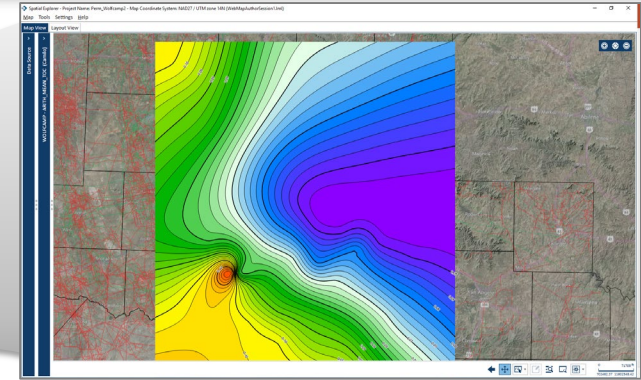
New Streamlined Workflow



Spatial Explorer

Image Service

Feature Service

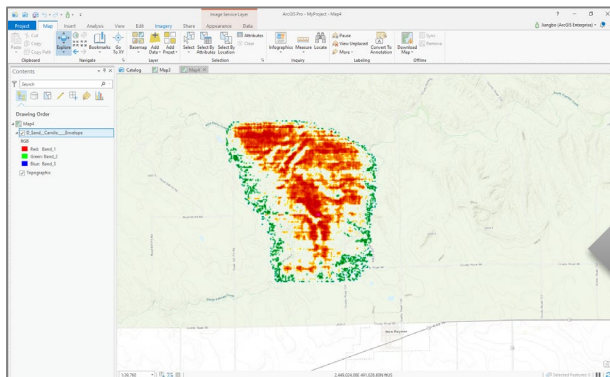


- Publish horizons and grids as Image Service in ARCGIS Portal
 - > Support original grid resolution or user defined screen resolution
 - > Original Kingdom color palette and opacity

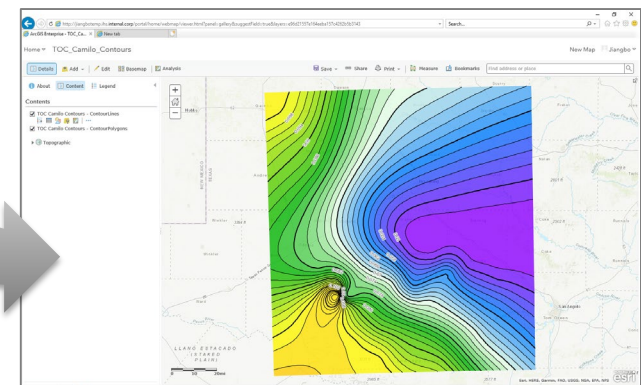
Esri Portal Data



- Publish contours and control points as Feature Services in ARCGIS Portal
 - > Honors Kingdom color fill contours



Esri Portal Web Visualization



Extract Geotiff to Pro Demo



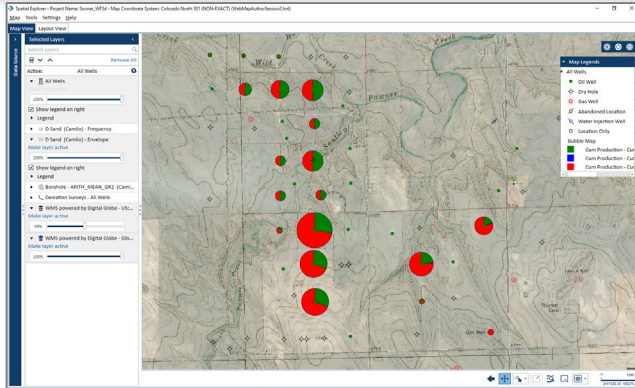
BRINGING OUT THE BEST

Publish Directly to Portal Demo



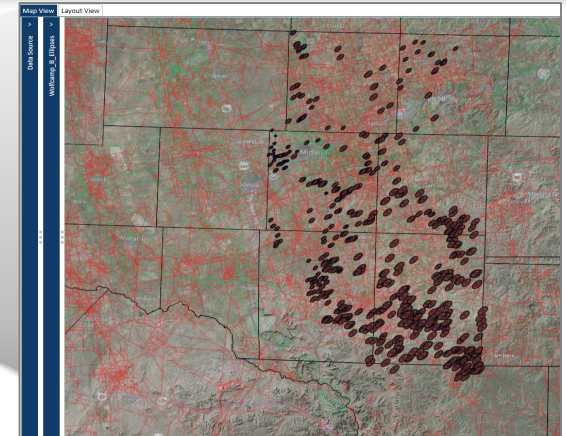
BRINGING OUT THE BEST

Future Developments



Spatial Explorer

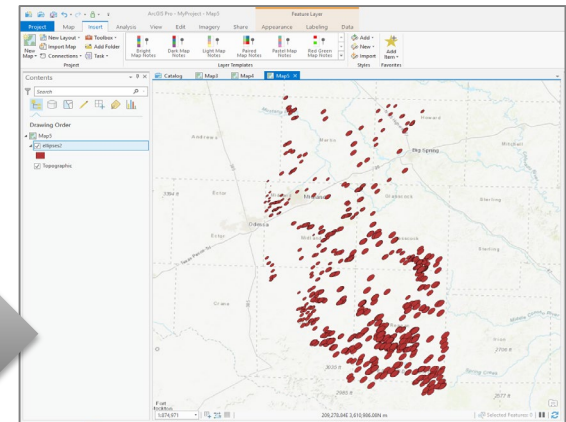
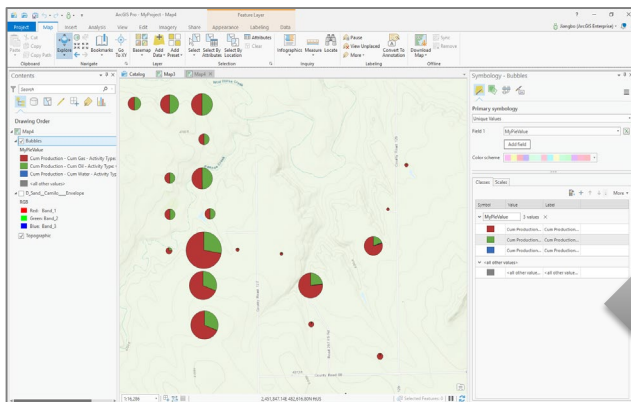
- Save to Shapefile
- Save to Subset
- Save to SdeDatabase
- Create Ellipse Layer
- Bubble To Shape File**
- Thematic to Shape File
- Discrete To Shape File
- Create Buffer Layer
- Save to Shapefile



- Publish to Portal any well related polygon
 - > Drainage bubbles (horizontal wells)
 - > Drainage ellipses
 - > Thematic Maps
 - > Bubble and discrete bubbles map

Publish to Portal, get the same data and same visualization

- In addition to the current layer attributes, option to select additional attributes from Kingdom database to be published



Availability



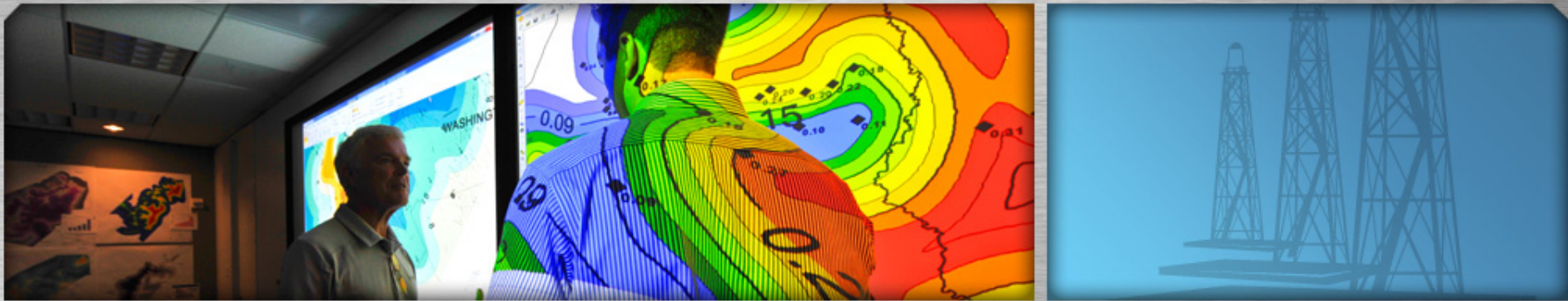
- Kingdom 2019 – Planned Release May 28th
- Compatible with ArcGIS Enterprise 10.6.X and ArcGIS Pro 2.X
- ArcGIS Enterprise 10.7.X compatibility coming in 2019 Service Pack 1

Summary



- EnerVest and IHSM have worked to streamline one of the biggest pain points in getting geoscience data into the ESRI platform
- With these capabilities Geoscience teams now have an easy way to share their final interpretation products with the rest of the organization
- This functionality is brand new and more development will be coming to publish all possible data types
- All of this was possible thanks to collaboration with the ESRI development team

Questions?



BRINGING OUT THE BEST