



# Point Based Addressing The Next Evolution of GeoSpatial Data

John Fisher, President & CEO  
DMTI Spatial Inc.

**ESRI USER CONFERENCE**

**2003**

**San Diego**

**Tuesday, July 8, 2003**

**Room 29-D (SDCC)**

**Paper #1008**

**really  
smart  
spatial  
solutions™**

[www.dmtispatial.com](http://www.dmtispatial.com)



## DMTI Spatial

really  
smart  
spatial  
solutions™



- The leading provider of Canadian geospatial data and software for geocoding and address management
- Founded in 1994
- 62 Employees
- Creators of:
  - CanMap
  - GeoPinpoint
  - Address Management Solution
- Winner of 2001 ESRI New Partner of the Year



Street Map Data

Route Map Data

Rail Map Data

Points of Interest

Geocoder

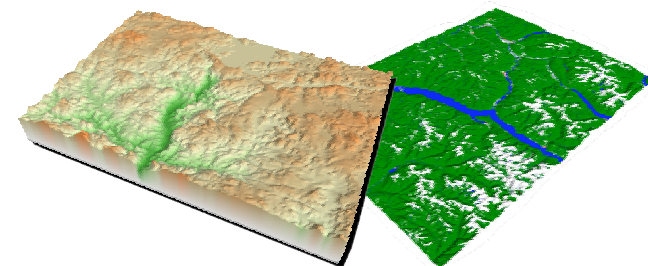
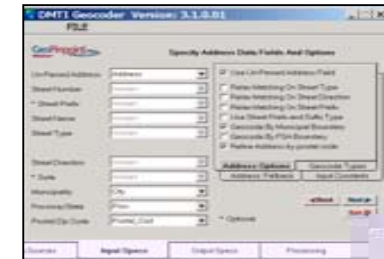
Postal Geography

Census Geography

Placenames

Topographic Data

## Product Suite





# Customer Base

really smart spatial solutions™





Location

really  
smart  
spatial  
solutions™

- **The Universal Index**
  - Universally applicable
  - Easy to use and reference
  - Unambiguous
  - Permanent
  - Maintainable
  - Manipulable





## Reference Mechanisms

really  
smart  
spatial  
solutions™

- **Coordinates**
- **Address**
  - Municipal address
  - Postal Address; postal code or zip code
  - Community name
  - Landmark name
- **Universal ID**



## Address Ranges Issues



- **Problems with Address Range Interpolation**
  - Non-standard incrementation (1, 3, 4, ?)
  - Missing addresses
  - Exaggerated address counts
  - Odd and even addresses on same side of street
  - Gaps in addressing between street segments
  - Multi-unit dwellings and business buildings
  - Parks and other non-addressed areas
  - Infill housing (2A, 12 \_, 6R, 5 upper, etc.)
  - Non-standard lot sizes



## Address Point Advantages

really  
smart  
spatial  
solutions™

- One-to-one relationship with the addressable entity
- Removes non-existent addresses
- Improved locational accuracy
- Handles non-standard addressing patterns
- Removes ambiguity
- Superior quality control





## Accuracy of Placement

really  
smart  
spatial  
solutions™

- **Levels of spatial precision**
  - Interpolated from range
  - Range interpolation with validated addresses only
  - Parcel centroid
  - Within building outline
  - Building polygon
  - Unit within multi-unit building
  - Suite polygon



## Improved Voracity

really  
smart  
spatial  
solutions™

- One-to-one relationship with entity data
- High degree of stability over time
- Can be directly associated with infrastructure
- Facilitates unambiguous linkages between datasets
- Allows for extensive meta data
- Can be absolutely validated



## One-to-One Relationship Benefits

really  
smart  
spatial  
solutions™

- **One-to-one relationship with the addressable entity**
  - Allows tagging of individual entity with specific attributes
  - Differentiates characteristics at most granular level
  - All group characteristics can be accurately be built up from this atomic level

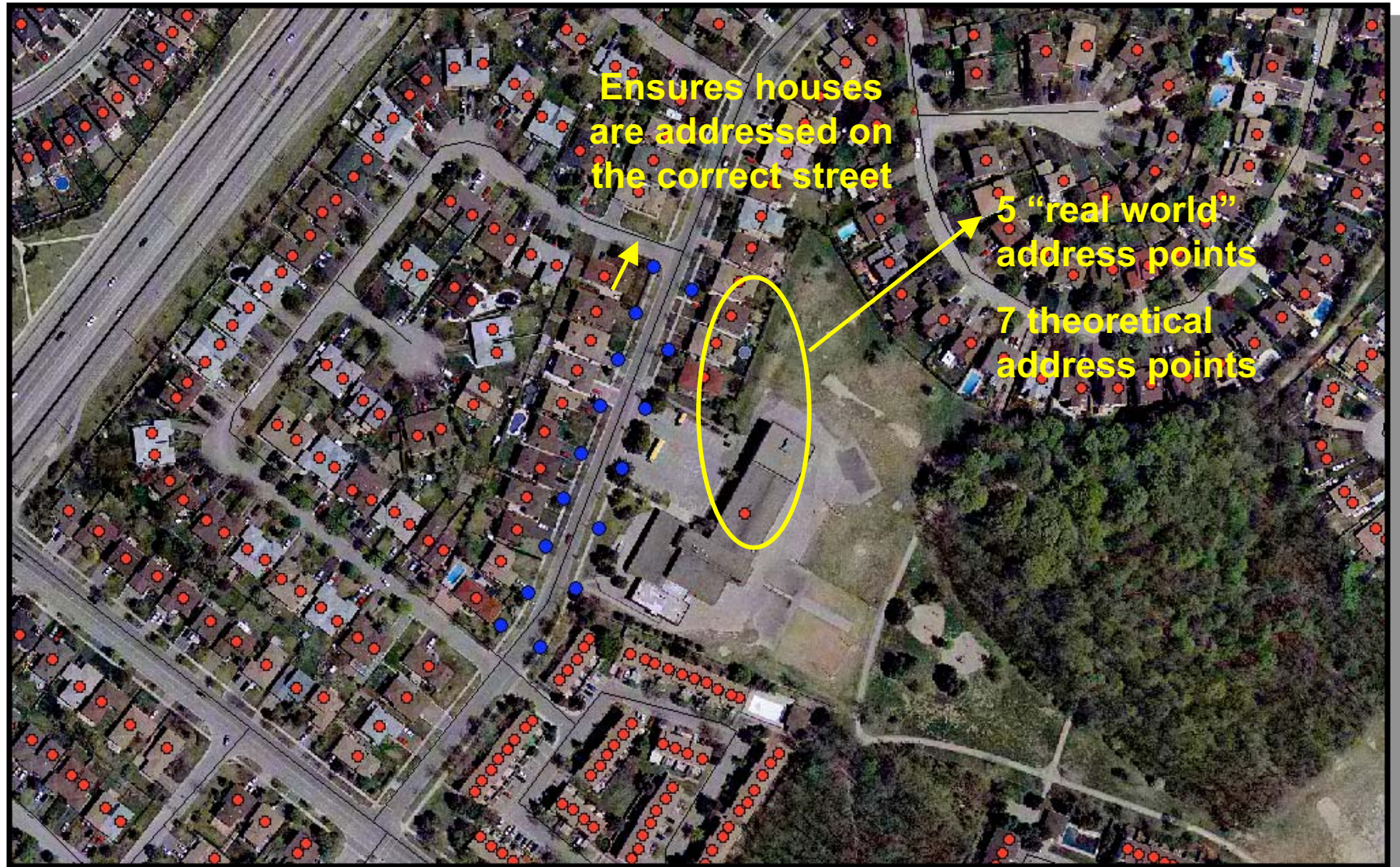


## Application Benefits

really  
smart  
spatial  
solutions™

- **Applications that benefit substantially from point level addressing**
  - Emergency Services
  - Navigation
  - Servicability
  - Delivery Services
  - Address Management
  - Location Based Services
  - Infrastructure Management

# Ensures Correct Allocation to Streets



## Handles Non-Standard Addressing Patterns





## Point Addresses The Next Evolution

really  
smart  
spatial  
solutions™

- Superior positional accuracy
- Stable over time
- Non-ambiguous
- Removes fictitious addresses
- Improved quality control
- Superior voracity
- One-to-one relationship with attributes
- Enables precision dependent applications