



# Milepost Locations in Rural Emergency Response - The Missing Piece

Hillary M. Armstrong

Sandia National Laboratories

Sandia is a multiprogram laboratory operated by Sandia Corporation, a Lockheed Martin Company, for the United States Department of Energy's National Nuclear Security Administration under contract DE-AC04-94AL85000



I am here today to :



- Make a case for a **National Milepost Dataset**
- Elicit your feedback
- Solicit your support





## Incident location needs to be:



- Universally understood by all responders
- Clearly, unambiguously, transmitted via voice
- Related to some landmark on the ground



# A milepost dataset is missing at the National level because:



- Limited need pre-9/11/01
  - Typically Local/Regional response
  - Rarely needed to coordinate with Locals
  - Not true today
- Dataset is “bigger” than any one user
  - Not enough resources: \$ and extent
  - No creation mandate
  - Still true today



# Need is now recognized but... Institutional issues/obstacles exist:



- State level: most **collect** mileposts
  - Milepost maintenance/funding
  - Organizational ownership issues
  - Duplication of effort – ironic
- Local/Regional level: most **use** mileposts
  - Some are unaware of the State datasets
  - Incomplete datasets are unacceptable
  - Duplication of State effort



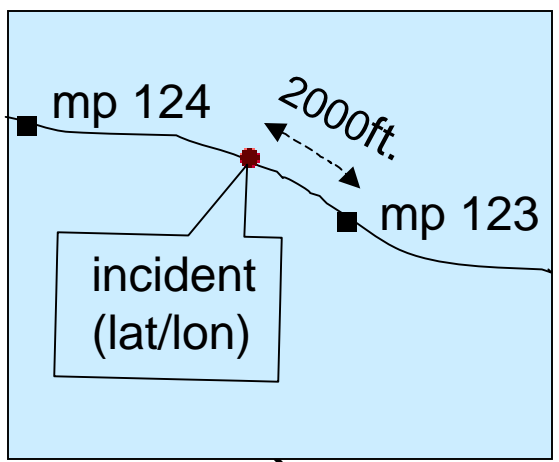
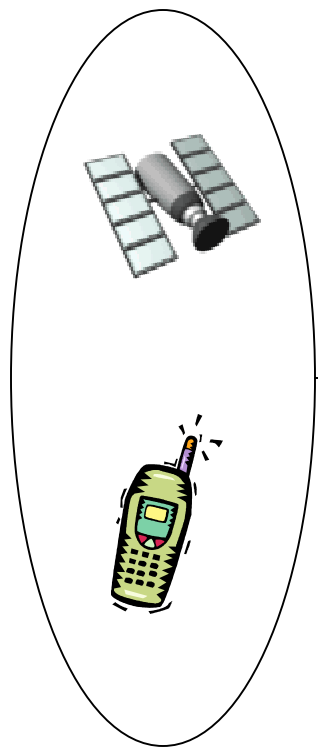
# Now is the time: We need a **National Milepost Dataset**



- Emergency response needs:
  - NORTHCOM J2 Directorate
  - DOE/NNSA/Office of Secure Transportation (OST)
  - Local/Regional PSAPs (Public Safety Access Pts)

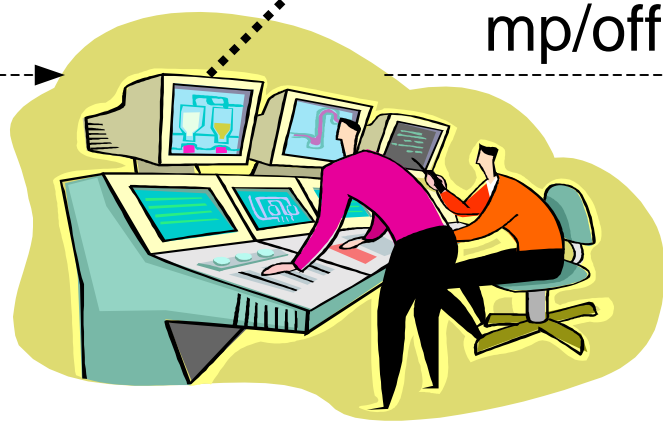


# GPS alone is not the best solution...

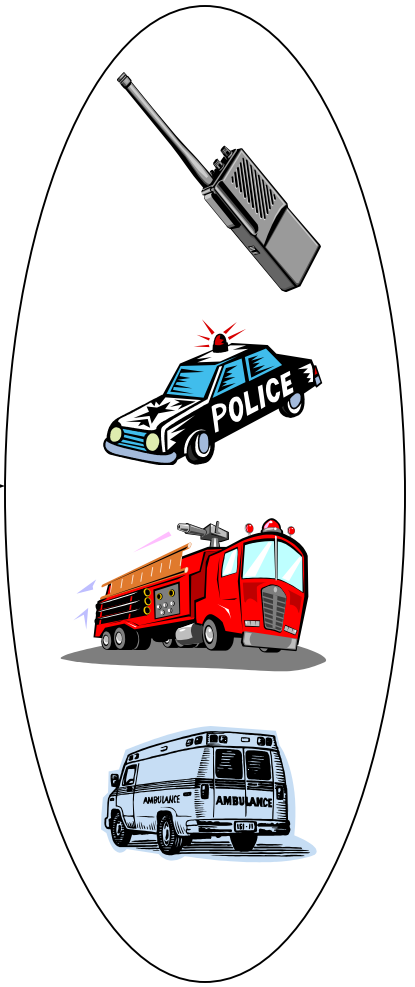


incident (lat/lon)

mp/offset



## Command/Dispatch Center





# Now is the time: We need a **National Milepost Dataset**



- Highway safety and emergency preparedness needs:
  - National Highway Transportation Safety Administration (NHTSA)
  - NGA's Border and Transportation Security Branch of the Homeland Security Division





# Strategies to create, maintain, and distribute



Must be **win-win** for all involved...

Collectors, creators, maintainers, and users in both the:

## Public Sector:

Federal

State

Regional/Local

## Private Sector:

PSAP data vendors

Transportation data vendors

Consultants



# Creation, maintenance, and distribution example:



- A National mapping organization with experience in managing National dataset creation, maintenance, and distribution manages the project
- Private sector vendor(s)/consultants do assembly and maintenance work
- A standard way to create National data products



## Funding:

nothing happens without it...



- No single organization, public or private, has come forward with enough money or resources to do this for the entire country
- Nearly all interested parties have something to contribute
- Needs National project management experience



# **Pilot project:** a way to look at level of effort



- Identify issues with creating and maintaining the dataset, for example:
  - What's out there?
  - How good is it?
  - What agreements are needed?
  - What procedures are needed?
- Scope the work and level of effort to create a National Milepost Dataset



# Take Aways...



- **A National Milepost Dataset:**
  - is **needed** at the National level, and **now is the time** to create one,
  - will be **challenging** to create, but the **benefits** will exceed the **investment**,
  - must be **consistent** with **Local** and **Regional** data,
  - must be a **win-win** for all.



# What questions do you have?



Hillary M. Armstrong  
Sandia National Labs  
505-845-8571  
hmarmst@sandia.gov