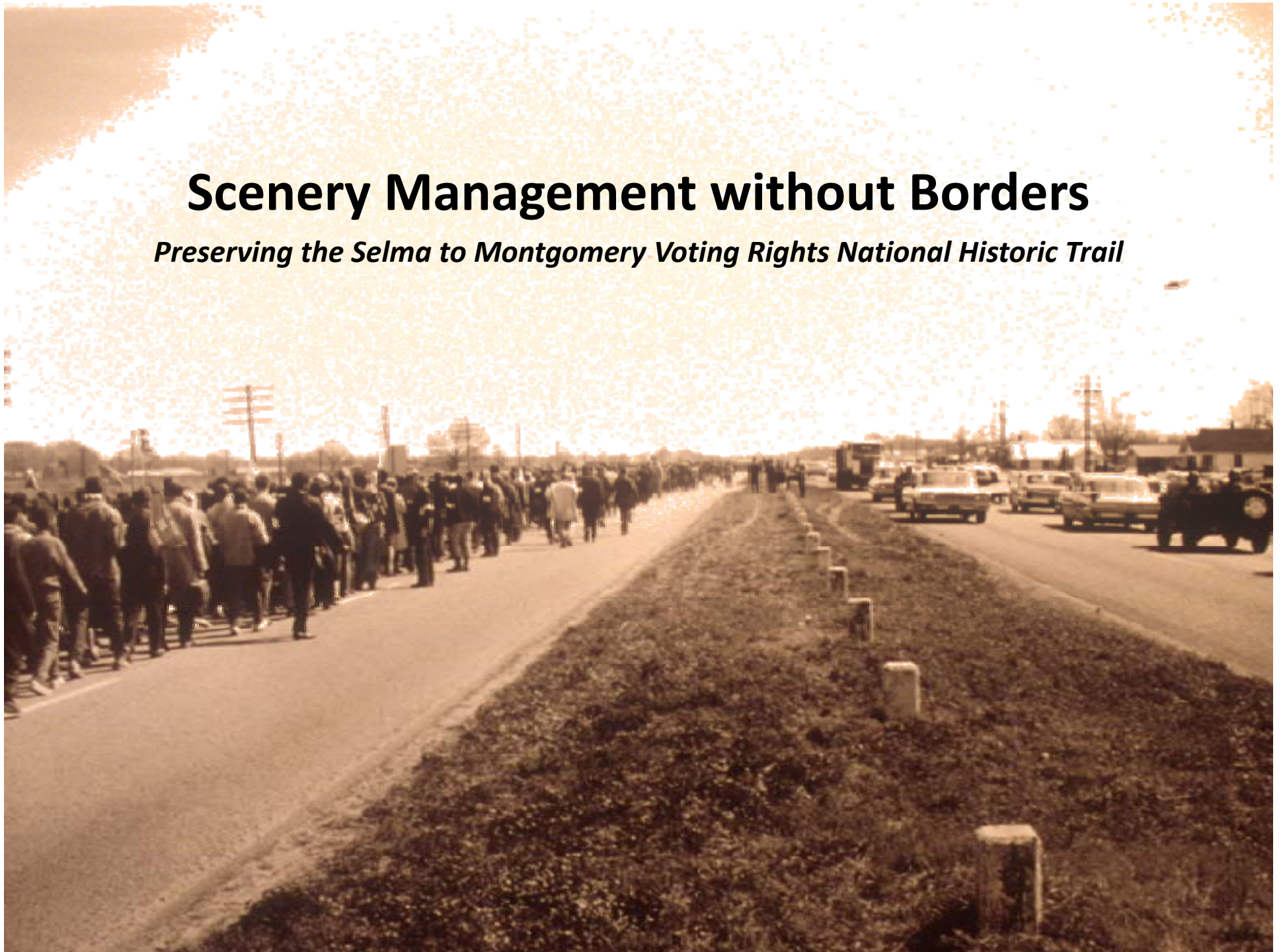
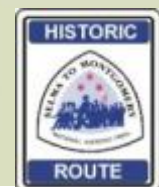
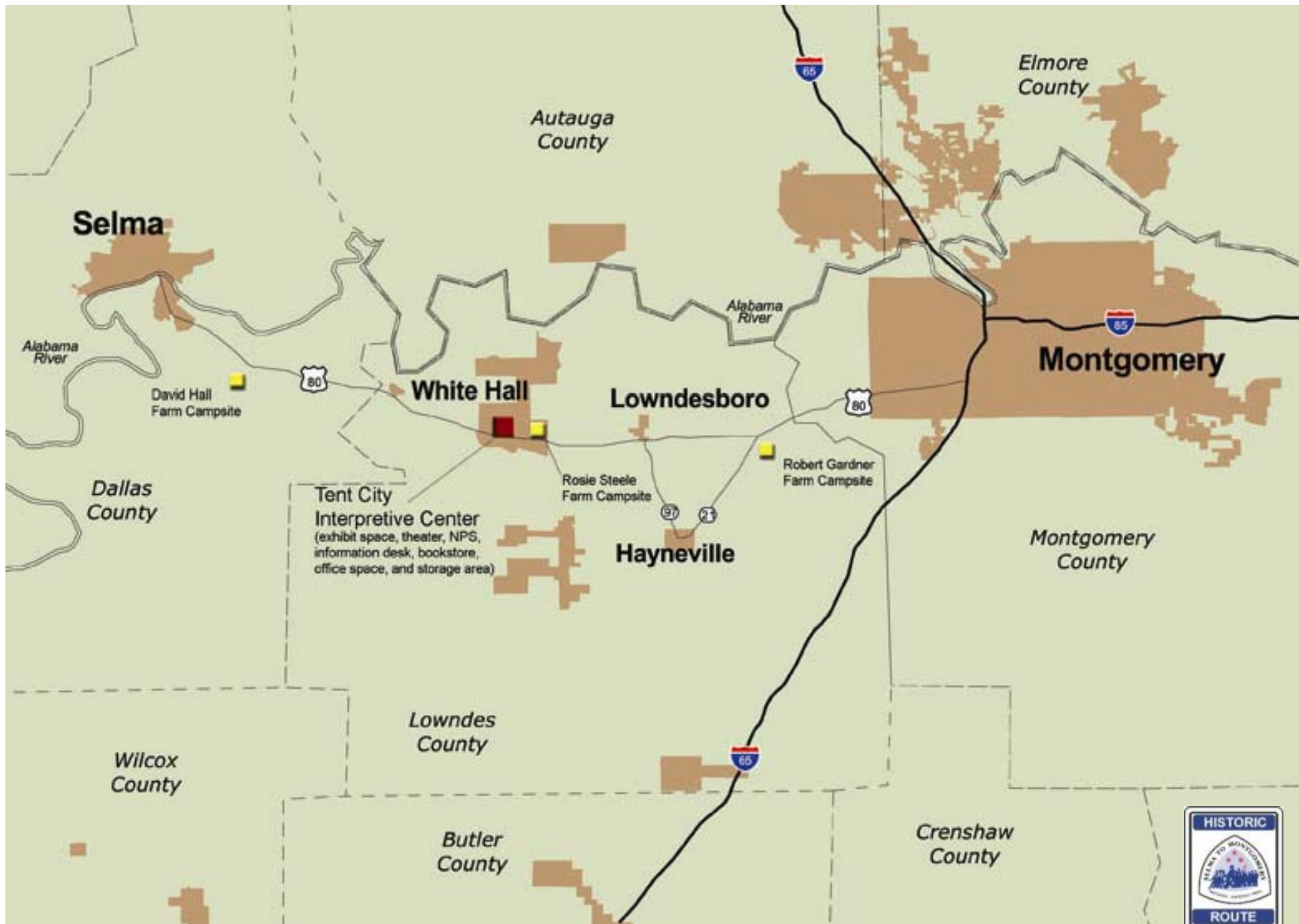


# Scenery Management without Borders

*Preserving the Selma to Montgomery Voting Rights National Historic Trail*





## ***Process***

***1) Data collection and evaluation***

***2) Model development***

***3) Model runs/assessment***

***4) Field Verification***

***5) Prioritization of land for conservation/protection***

# ***Model Development***

## ***Inputs:***

- 1) Visibility/Viewshed***
- 2) Distance Zones (US Forest Service Scenery Management System)***
  - a) Up to ½-mile***
  - b) ½-mile to 4 miles***
  - c) 4 miles to 10 miles (extent of boundary viewshed)***
- 3) Landscape Integrity***
  - a) Historical Integrity of the Cultural Landscape (National Park Service)***
  - b) Existing Land Use (2007 aerials, National Land Cover Data Set)***
  - c) Historical aerials from the 1965 March***
  - d) Cell phone towers, antennas, transmission lines***

# ***Model Development***

## ***Inputs (continued):***

### ***4) Cultural Resources***

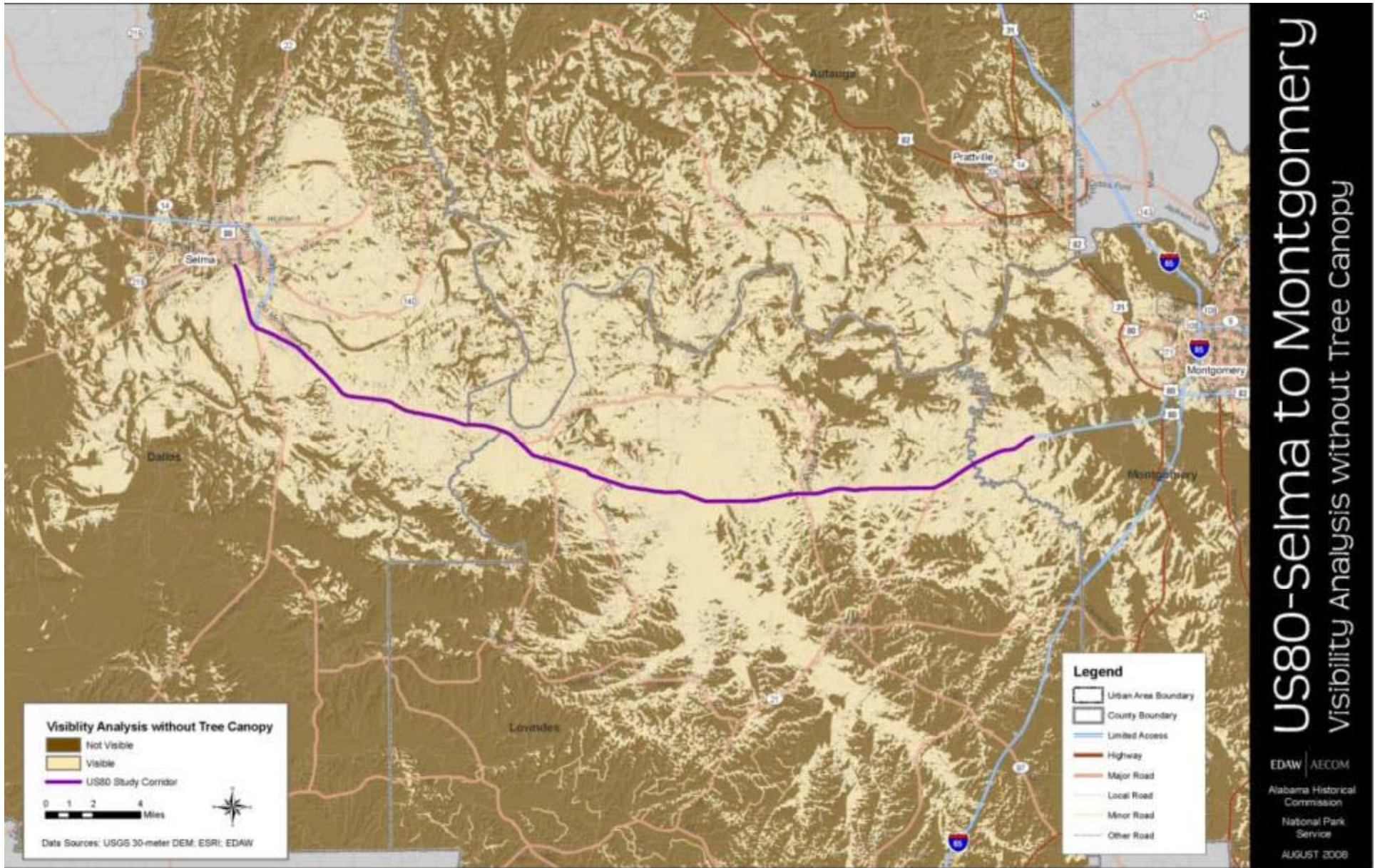
- a) National Park Service (primary, secondary and commemorative sites)***
- b) Original roadway sections***
- c) Other landscape features (pecan grove)***

### ***5) Environmental Resources***

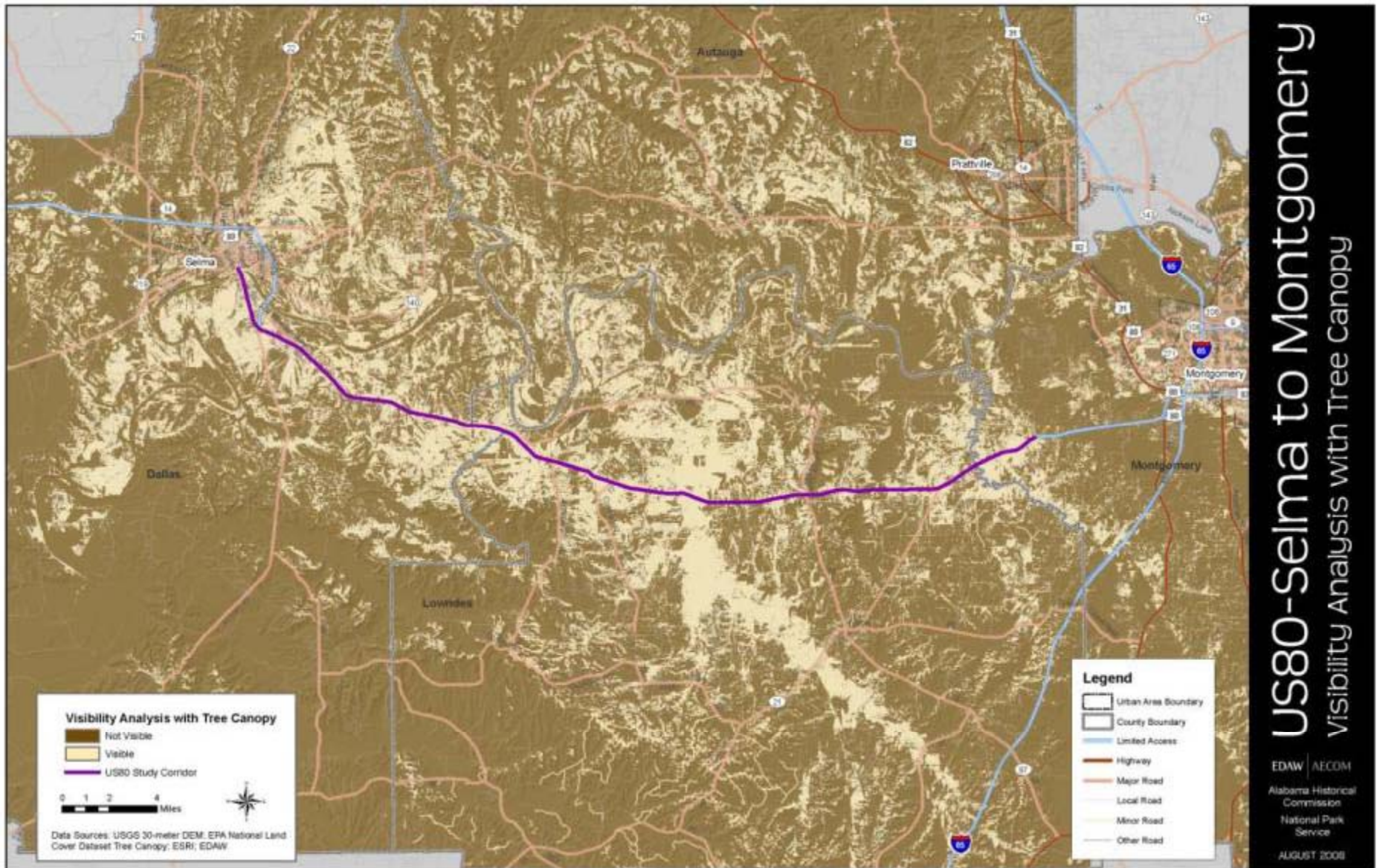
- a) National Wetlands Inventory***
- b) Nature Conservancy Conservation Interest Areas (Estuarine and Terrestrial Species)***

| <b>Model Input/Layer</b>            | <b>High (1)</b>   | <b>Medium (2)</b>  | <b>Low (3)</b>  |
|-------------------------------------|---|--|---|
| Visibility*                         | Seen more than 3 times from corridor viewpoint locations<br>(1) | Seen 2 to 3 times from corridor viewpoint locations<br>(2) | Seen 1 time from corridor viewpoint locations<br>(3)                  |
| Landscape Integrity                 | Land uses unchanged<br>(1)                                      | Land uses similar<br>(2)                                   | Land uses changed significantly<br>(3)                                |
| Distance Zones                      | Foreground<br>(1)   | Middleground<br>(2)  | Background<br>(3)   |
| Cultural Resources                  | High potential primary sites<br>(1)                             | High potential secondary sites<br>(2)                      | High potential commemorative sites<br>(3)                             |
| Environmental Resources             | NWI wetlands and TNC Conservation Interest Areas<br>(1)         | --   | Areas outside NWI wetlands and TNC Conservation Interest Areas<br>(3) |
|                                     |   |  |   |
| <b>Potential Conservation Areas</b> | <b>6-9</b>  | <b>9-11</b>  | <b>11-14</b>  |

\*The scoring system follows the system established in the SEMO Cultural Landscape Inventory, NPS, April 2000 document, where a score of 1 = High, 2 = Medium, and 3 = Low. Note: Areas that are Not Visible (seen zero times) are not scored and are removed from consideration of potential conservation areas.

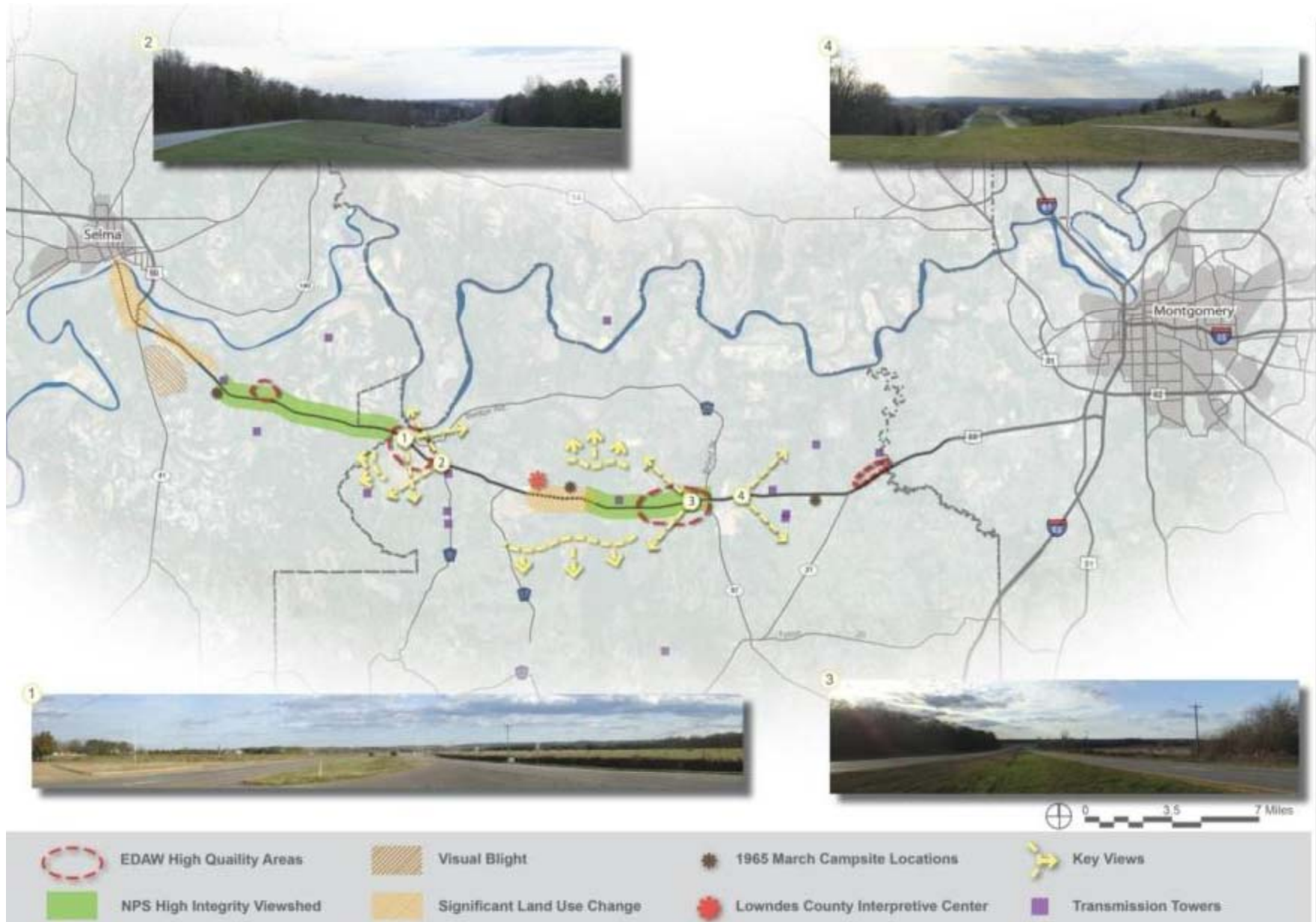


**Original Analysis**



**Original Analysis**

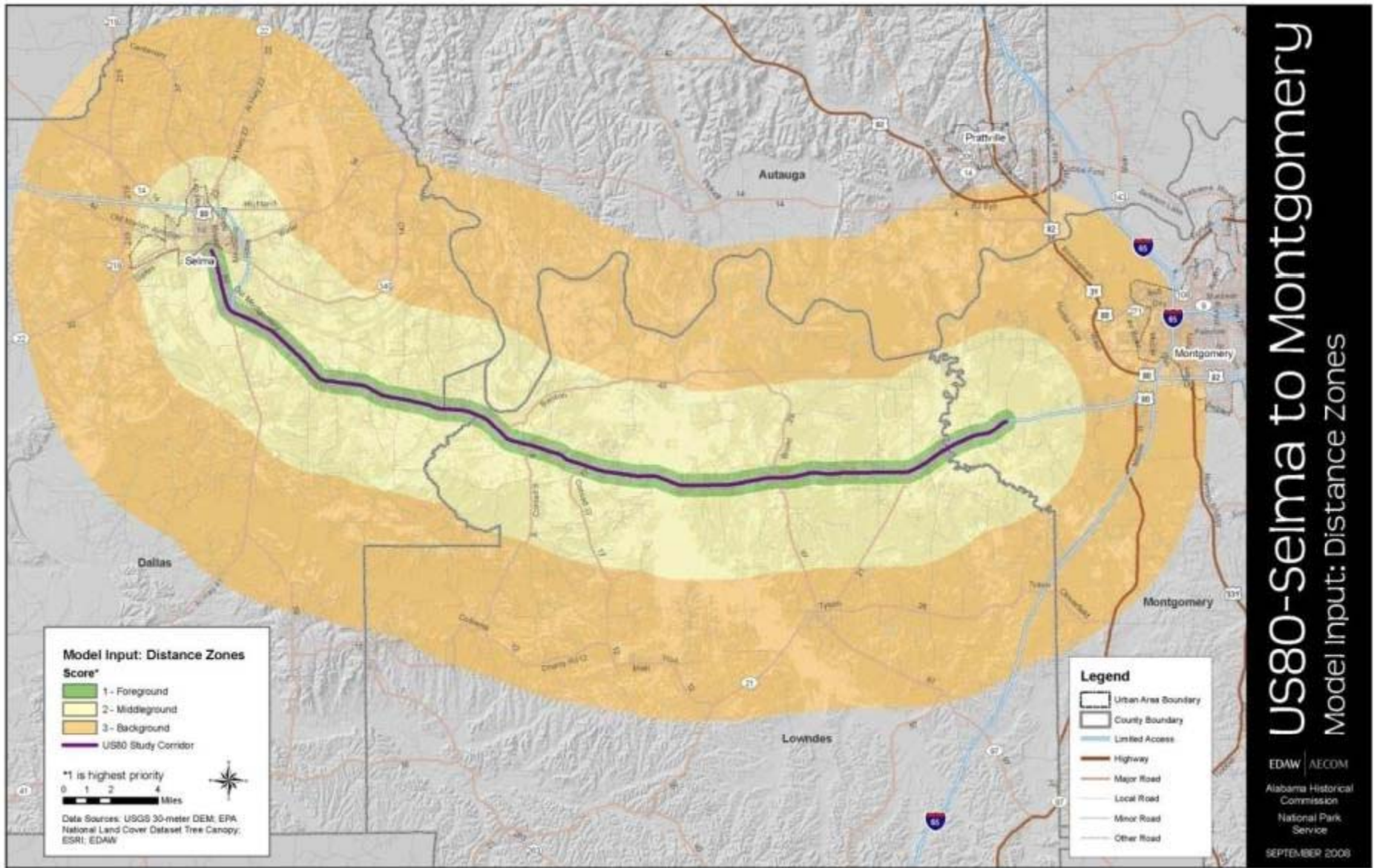




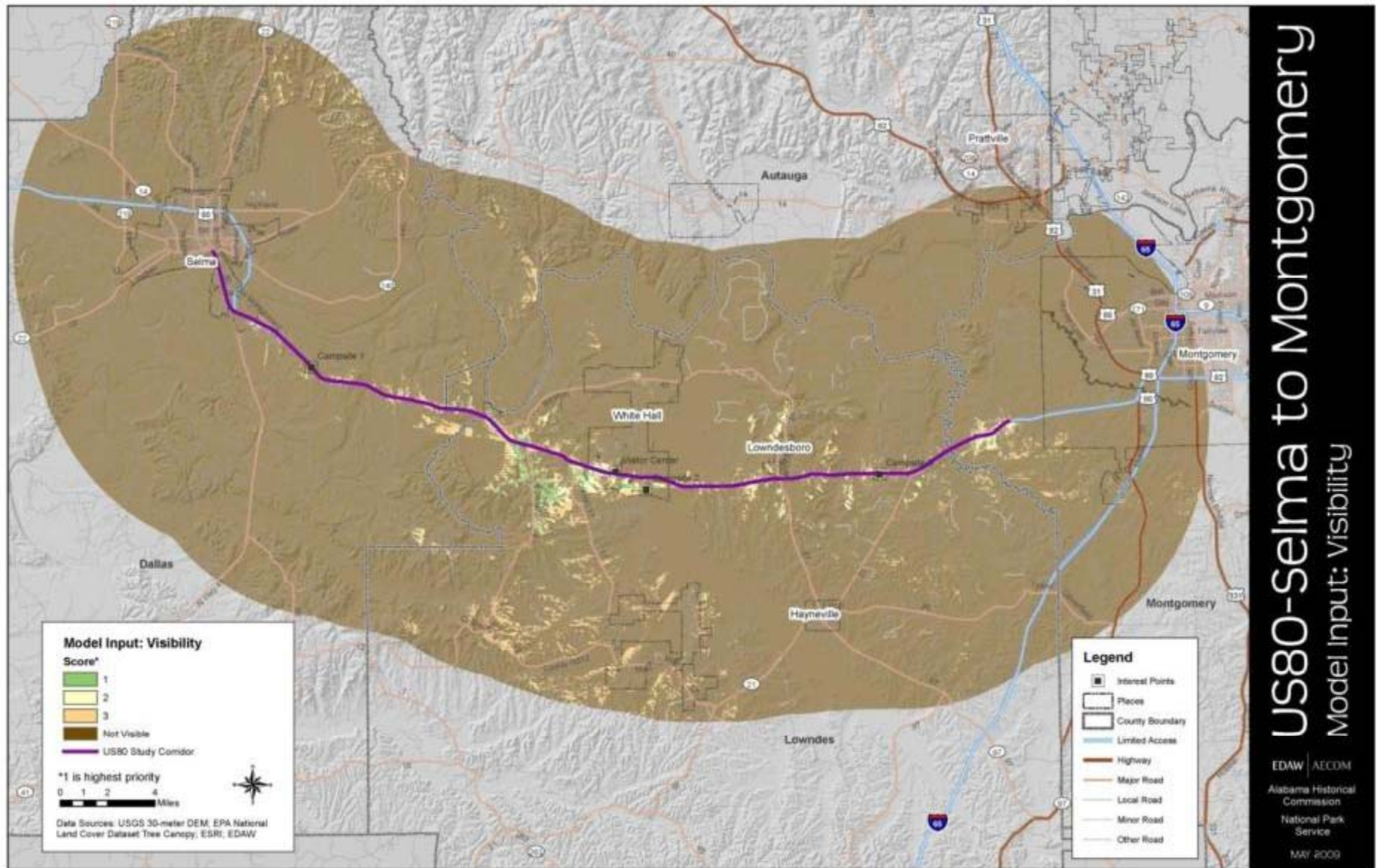
# US80 - Selma to Montgomery Corridor Analysis Diagram

EDAW | AECOM  
Alabama Historical Commission  
National Park Service  
FEBRUARY 2009

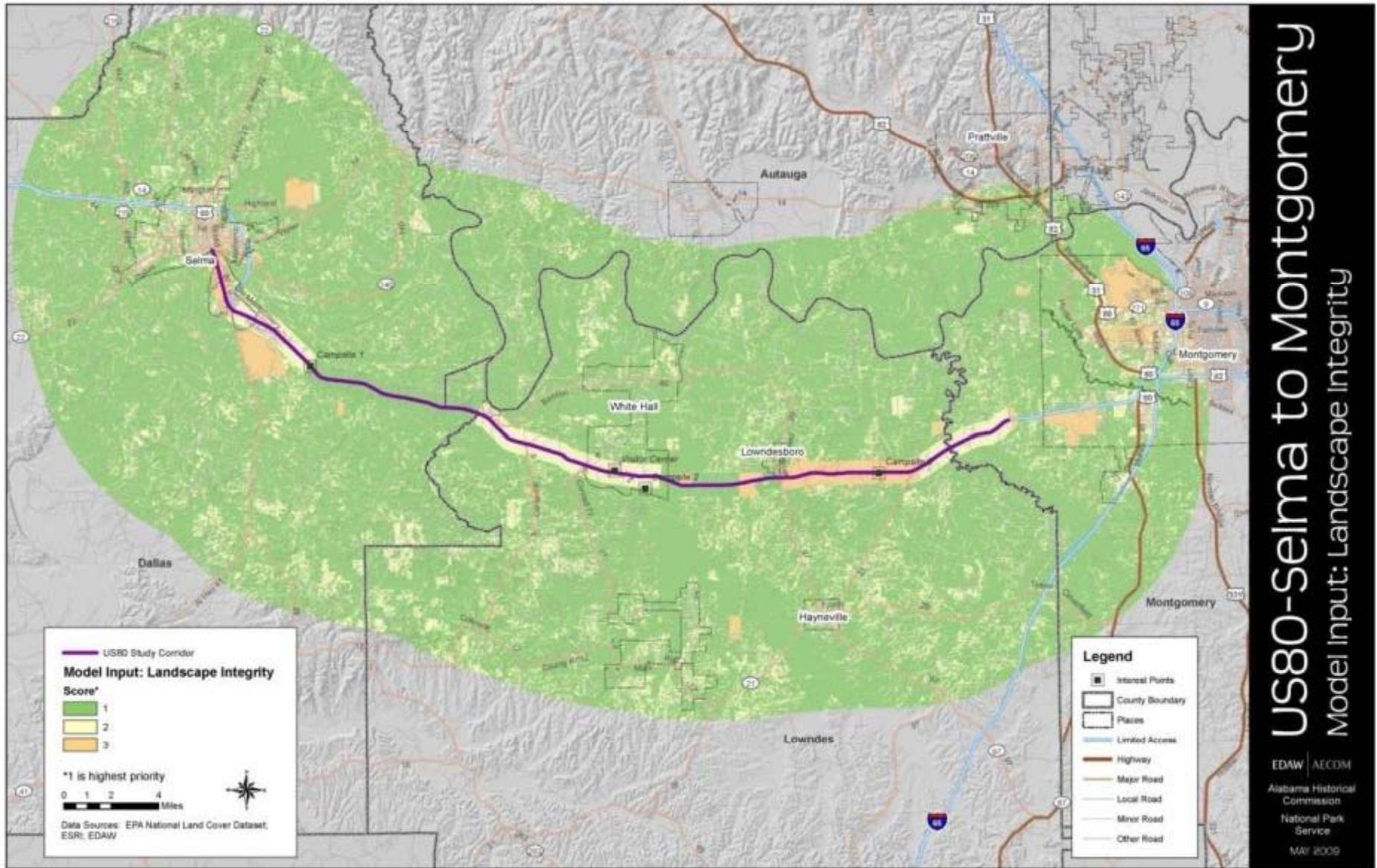
## Field Verification



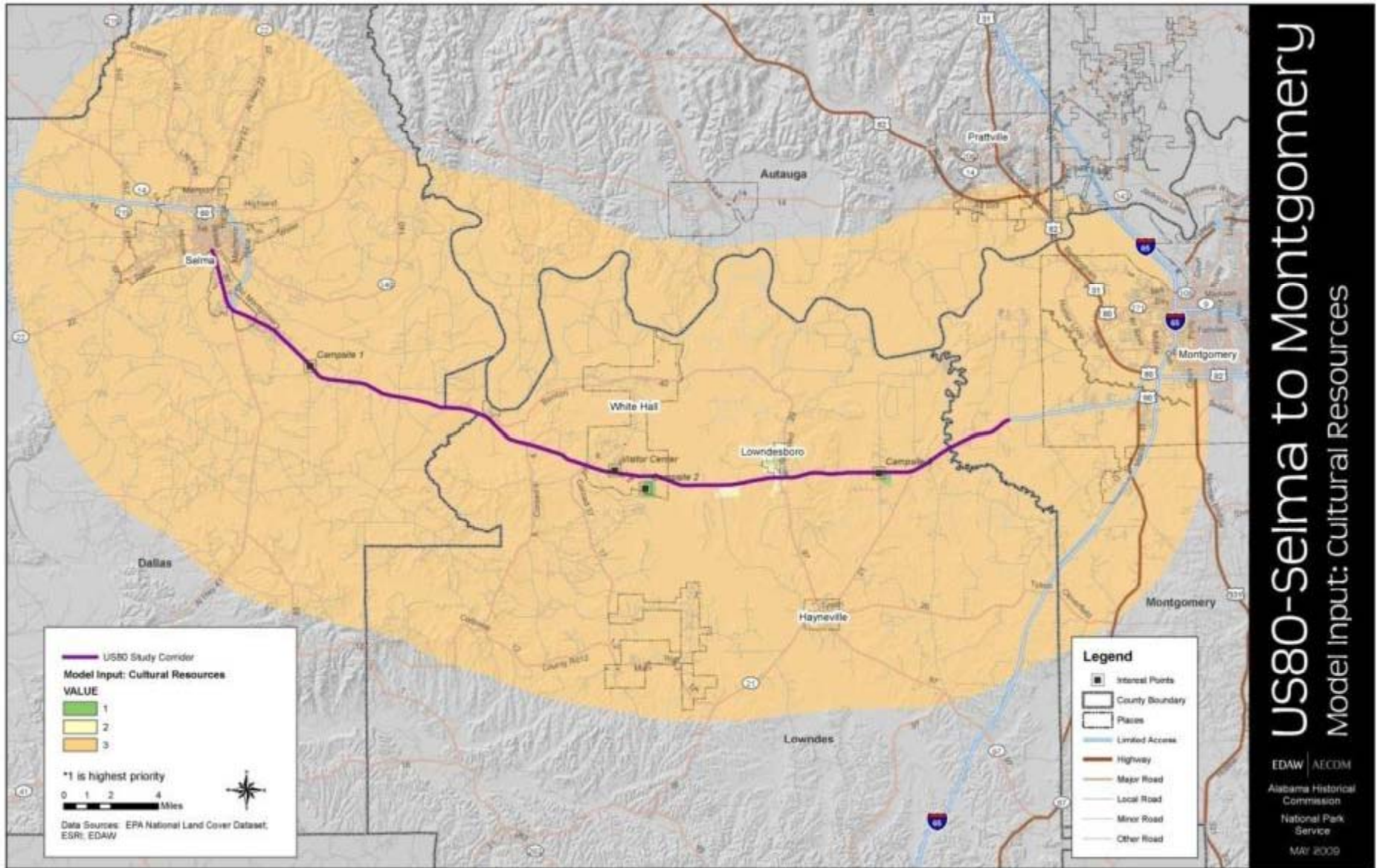
**Original Analysis**



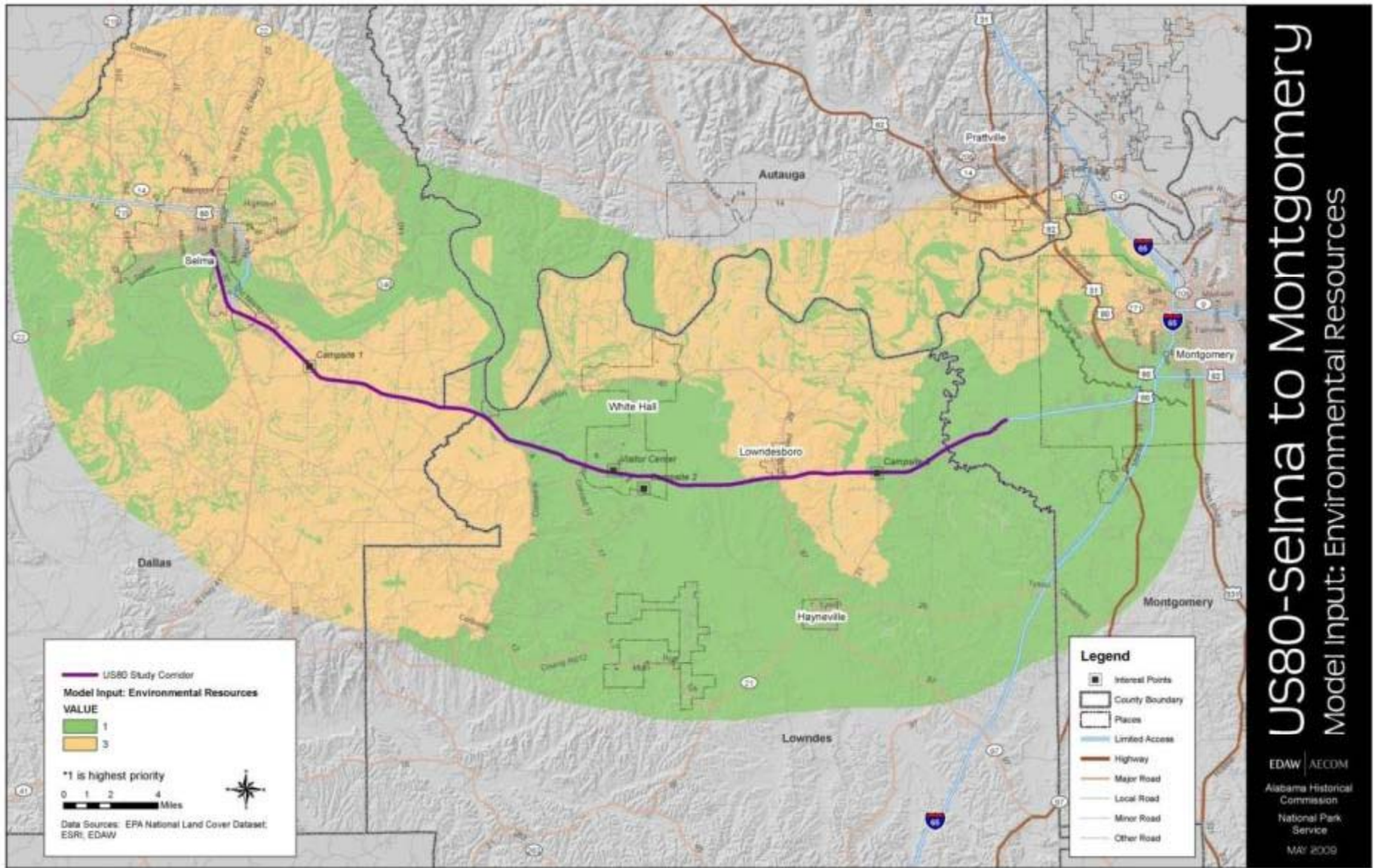
***Revised Analysis (DEM – feet vs. meters; tree heights – 18m/60 ft; tree canopy vs. land cover)***



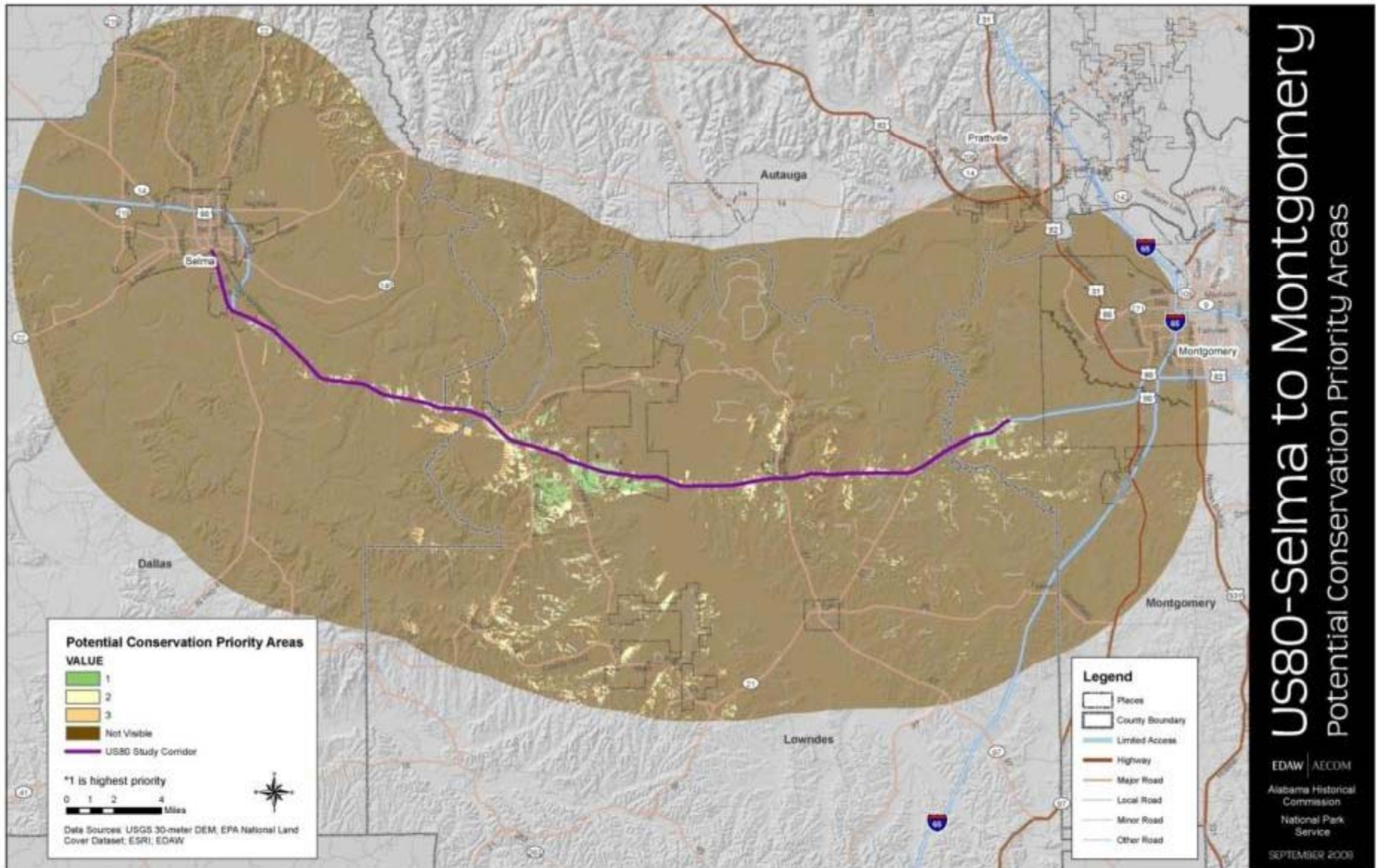
***Revised Analysis (Landscape Integrity, Historic Aerials)***



***Revised Analysis (Cultural Resources)***



**Revised Analysis (Environmental Resources)**



***Revised Analysis (Potential Conservation Priority Areas)***

***Approximately 4,000 parcels***

## *Challenges/Threats to Viewshed*







***National Park Service Lowndes County Visitor Center***

## ***Policy and Planning***

- 1) Alabama DOT – Access Management***
- 2) National Park Service***
- 3) US Army Corps of Engineers – Wildlife Management Areas***
- 4) Alabama Department of Conservation and Natural Resources, Division of Wildlife and Freshwater Fisheries  
- Alabama State Wildlife Action Plan***
- 5) Alabama Historical Society - review***
- 6) Nature Conservancy – easements***
- 7) Local governments – Zoning/Land Use policy***

## ***Two Scales***

- 1) Regional Analysis***
- 2) Parcel-Specific (4,000+ parcels)***

## ***Parcel Matrix (Attributes)***

- 1) Criteria found on each parcel***
- 2) Mean of Criteria***
- 3) Applicable Land Use Policies***

