

Now You Can Get There from Here - Virtually



GIS Mapping of Suffolk University's Friedman Field Station in Edmunds, Maine

What's Not Remarkable About this Project?

- **Uses basic ESRI technology – nothing fancy**
 - ArcView 9.2
 - Trimble GeoXH
 - Google Earth 5
 - Google SketchUp 7

What is Remarkable About this Project?

- The Friedman Field Station itself
- The reception from the University
- The number of uses these maps have spawned into

What is Remarkable About this Project?

- The Friedman Field Station itself
- The reception from the University
- The number of uses these maps have spawned into



The R.S. Friedman Field Station on Cobscook Bay

The Maine Campus of
Suffolk University

ESRI International User Conference – July 2009



Field Station Facts

- A 40 acre summer station with living, teaching, and research facilities for 60 on Cobscook Bay in Edmunds, Maine.
- 340 miles (approx. 7.5 hrs by car) from Boston
- Land purchased in 1968 through the generosity of Dr. Robert S. Friedman, first chair of biology department
- Founded in 1968 by Dr. Arthur J. West, II and dedicated in 1973 to Dr. Friedman
- Operates under the administration of the Biology Department (Dr. Beatrice L. Snow, Chair and Executive Director of FFS) and the College of Arts and Sciences.

Cobscook Bay

- Large, twenty-foot tidal fluctuation exposes diversity of intertidal habitats: rocky areas, mudflats, and salt marshes with a rich diversity of marine life.
- Located between Eastport and Lubec, Maine, the most northeastern part of the coast of the U.S.
- Lowermost portion of the Bay of Fundy in the Gulf of Maine
- A relatively undeveloped area, adjacent to the Moosehorn National Wildlife Refuge

Access to diverse and pristine
marine and terrestrial environments



ESRI International User Conference – July 2009





ESRI International User Conference – July 2009



Beautiful tide
pools



Abundant
Marine Life



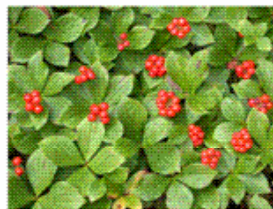
History, Fishing and Ocean Industry



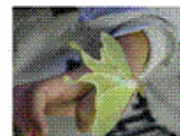
coastal bogs



Cornus canadensis
along trails in spruce-fir
forest



Unique and diverse assemblages of
animals and plants



The Facilities

Main building with
kitchen,
dining hall and
The
Arthur J. West
Teaching Lab



The office



Computer
Lab



four faculty cabins



12 student cabins



two thirteen foot Boston Whalers

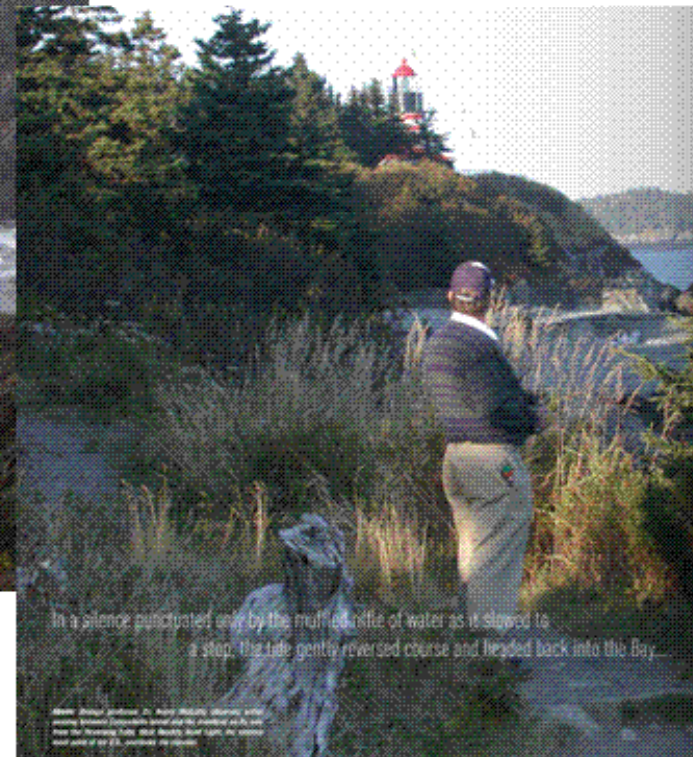
Teaching and Research Labs
Each with seawater systems



Suffolk University Courses

- Ecology
- Marine Biology
- Field Botany
- Tropical Marine Science
- Directed Research
- Marine Science Field Experience Program (co-sponsored with Museum of Science)





Moose at Sandy Stream
with Mount Katahdin in
background



Appalachian Mountain Trail



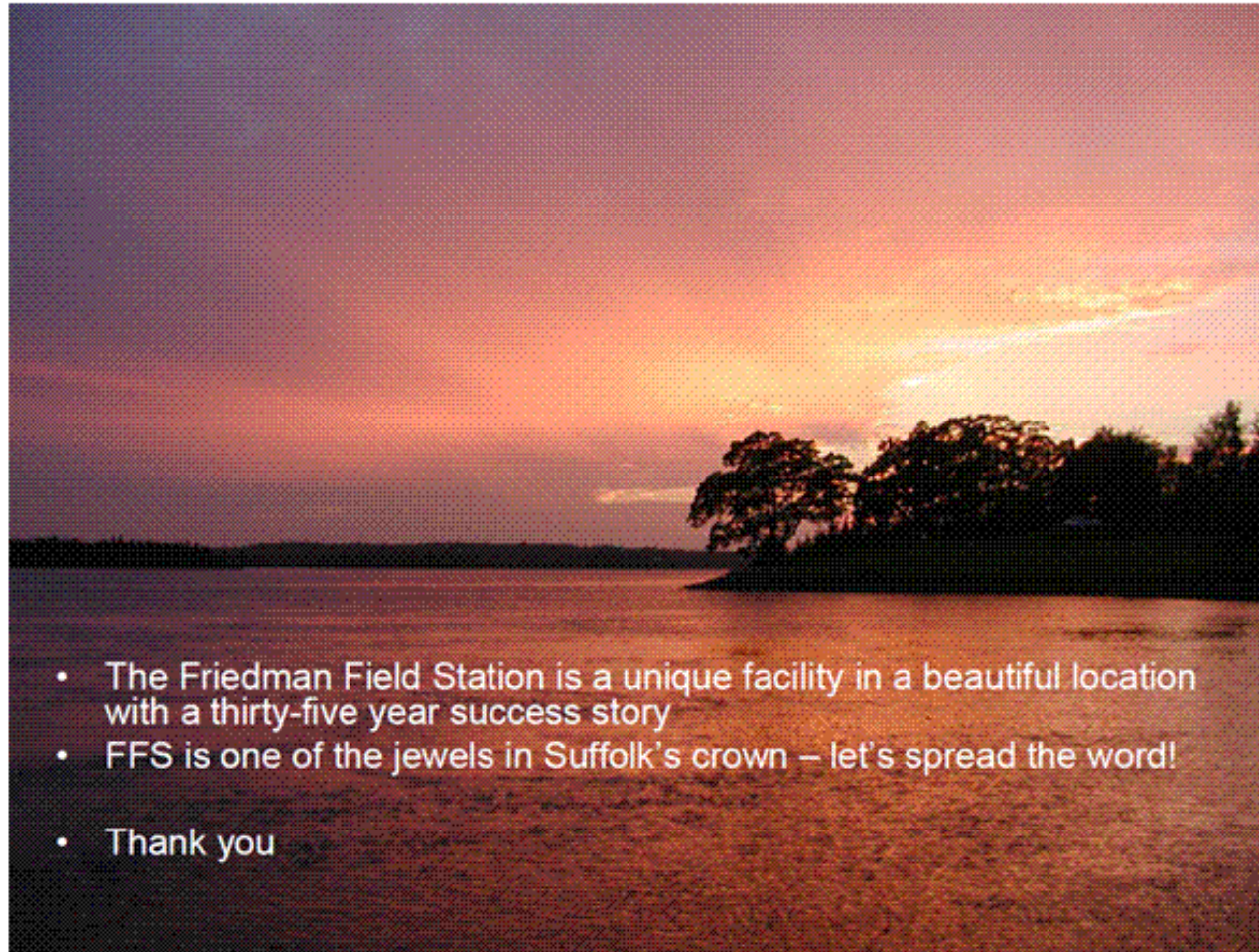
Marine Science Field Experience

(co-sponsored with the Museum of Science)



Biology Freshmen Trip





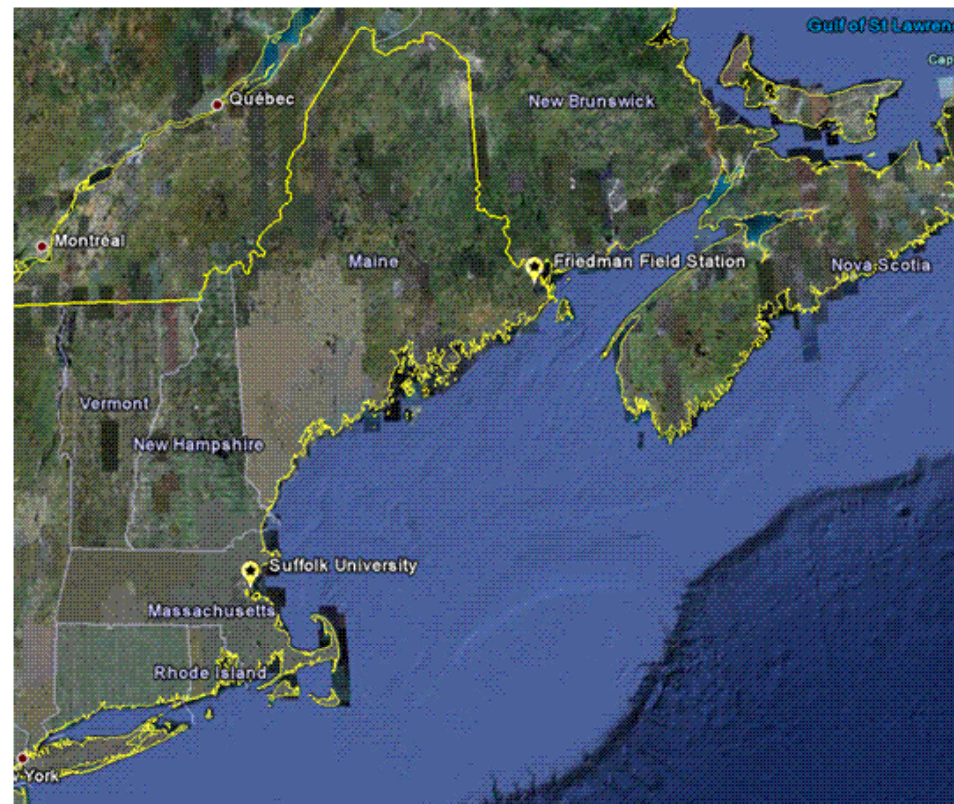
- The Friedman Field Station is a unique facility in a beautiful location with a thirty-five year success story
- FFS is one of the jewels in Suffolk's crown – let's spread the word!
- Thank you



Approximately 2,771 miles from here

ESRI International User Conference – July 2009





ESRI International User Conference – July 2009









My Goals

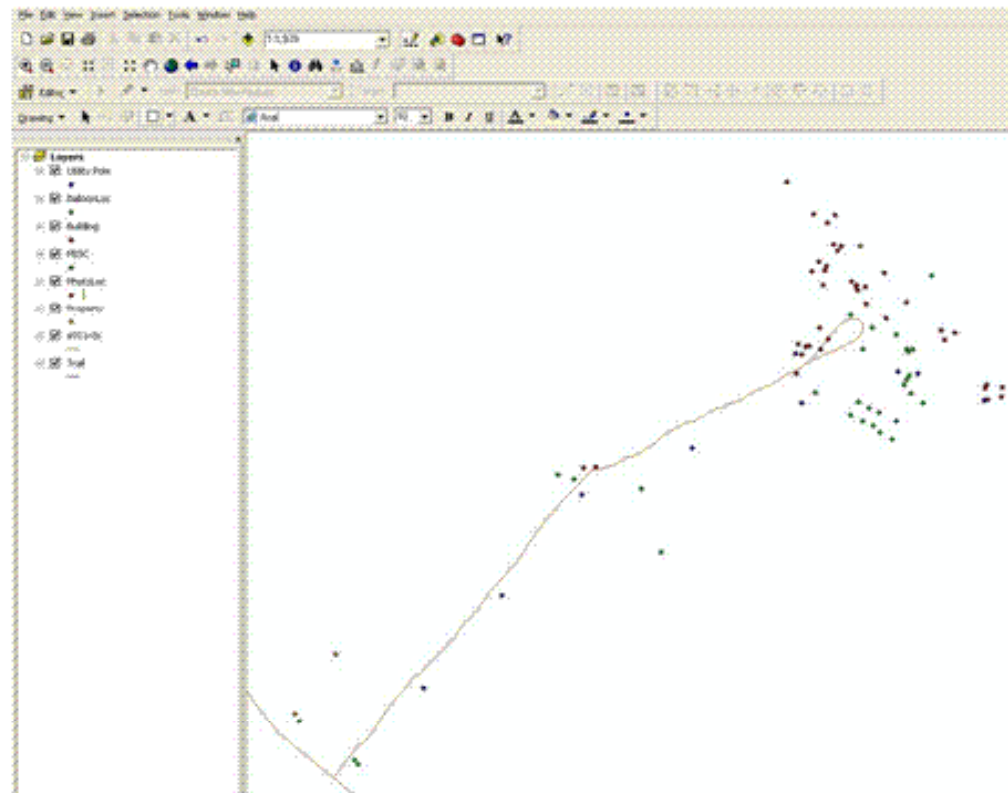
- Map it – it's just what I do
- Give my students a real project to work on
- Organize their data
- Provide a spatial context for the property
 - Locate main property features
 - Property boundaries
 - Integrate photos and videos
- Build a virtual world – on the web
- Evaluate ESRI 3D Technology vs. Google
- Assist in siting a small wind turbine
- Spread the word – both about Friedman and what GIS can do for Suffolk University

Data Gathering Mission – September 27, 2008

Scott Lussier as Meriwether T. Kirk



Collected ~100 Points with a Trimble GeoXH



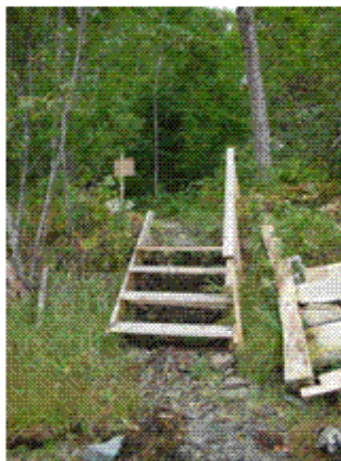
Wind Turbine Site Selection



Points Gathered

- Building Corners
- Utility Poles
- Cabin Front Steps
- Property Corners
- Signs
- Misc
 - Wells, Septic Vents, Flag Poles, Weather Stations, Volleyball Court, Saltwater Intakes

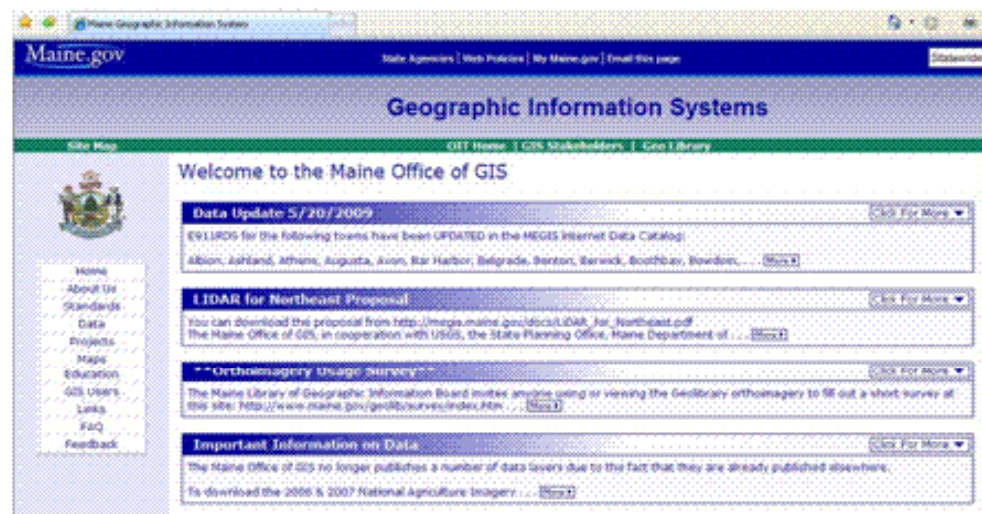
Photos



Layers Downloaded from Maine GIS

<http://megis.maine.gov/>

- Parcels
- Roads
- Shoreline
- 30 ft Elevations
- Bald Eagle Habitat

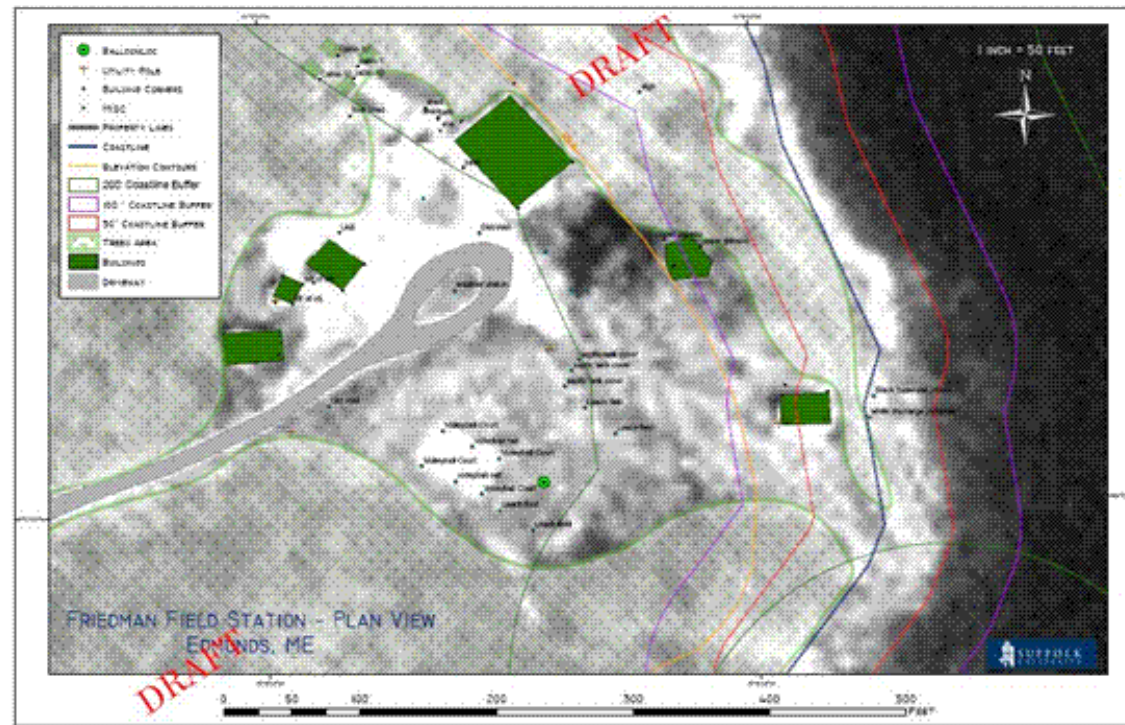


Layers Created

- Building Outlines – GPS/New Layer
- Shoreline Buffers – Buffer Tool
- Balloon Locations - GPS
- Driveway – Heads Up Digitization
- Treed Area – Heads Up Digitization
- Final Wind Turbine Location – Field Work

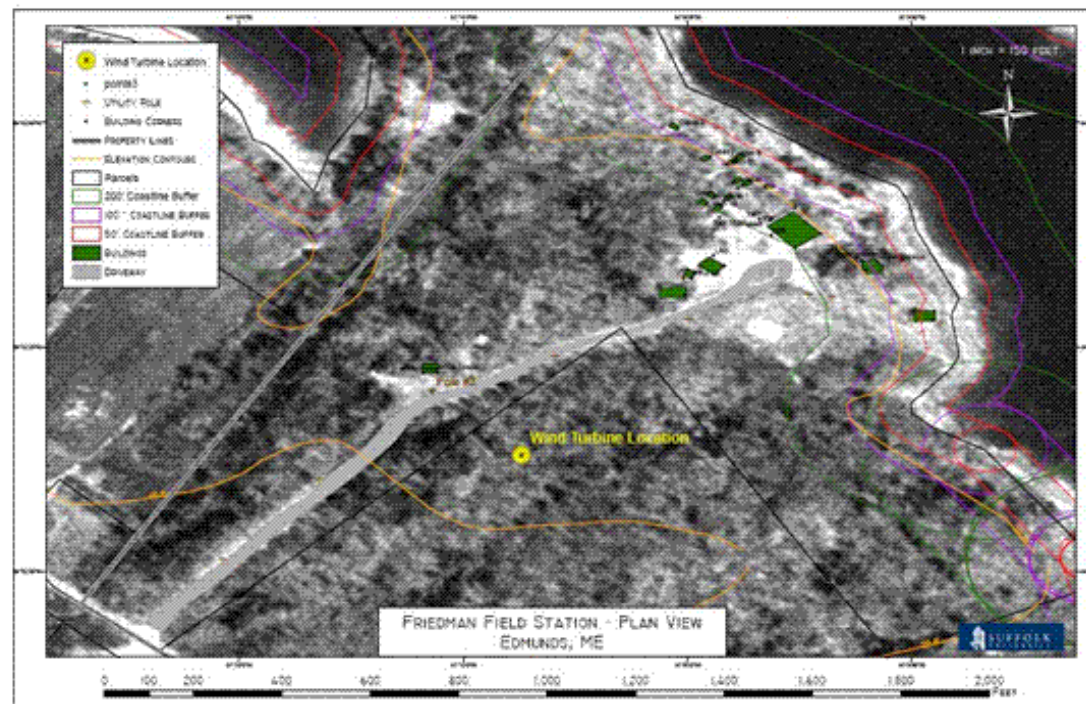
ArcGIS Map #1

General Property Layout

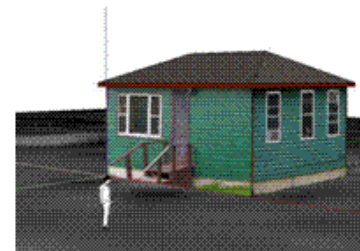
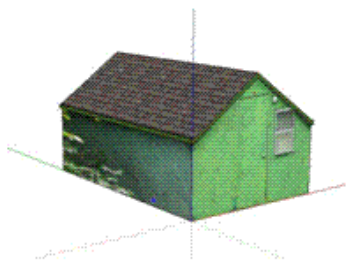


ArcGIS Map #3

Wind Turbine Location



Sketch Up Models



Lessons Learned

- Out of the box tools are great
- Even basic GIS tasks are impressive to those back at the mothership
 - Measuring from your desktop
 - Inserting digital photos
 - Google has its place

Next Steps

- Assist with Wind Turbine Installation
- Fully 3D
 - Google Server
 - Virtual Fly-over
- Web based
- Photo Respository
- Video tie in
- Assist in getting an Observatory built
- Cabin Tent Competition

Acknowledgements

- Dr. Walter Johnson
- Dr. Carl Merrill
- My students
- ESRI