

An aerial photograph showing a village with several small, white-roofed buildings situated in a valley. A wide river flows through the valley, and the surrounding hills are covered in sparse vegetation. The foreground shows a rocky, uneven terrain.

*Archaeological Site Identification and Investigation:
Geospatial Methods and Techniques*



Marin County

San Francisco County

Contra Costa County

Alameda County

SAN FRANCISCO BAY

San Mateo County

CAL AVERAS RESERVOIR

Santa Clara County

Santa Cruz County

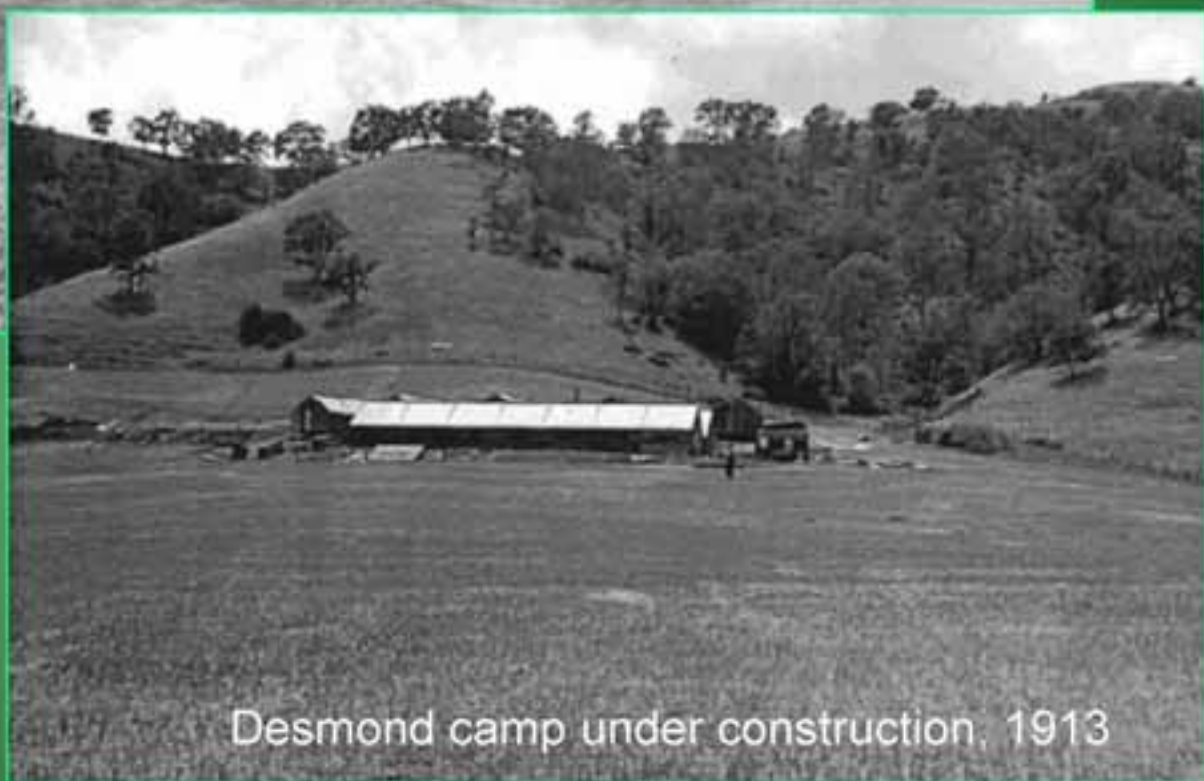
Stanislaus County

Merced County

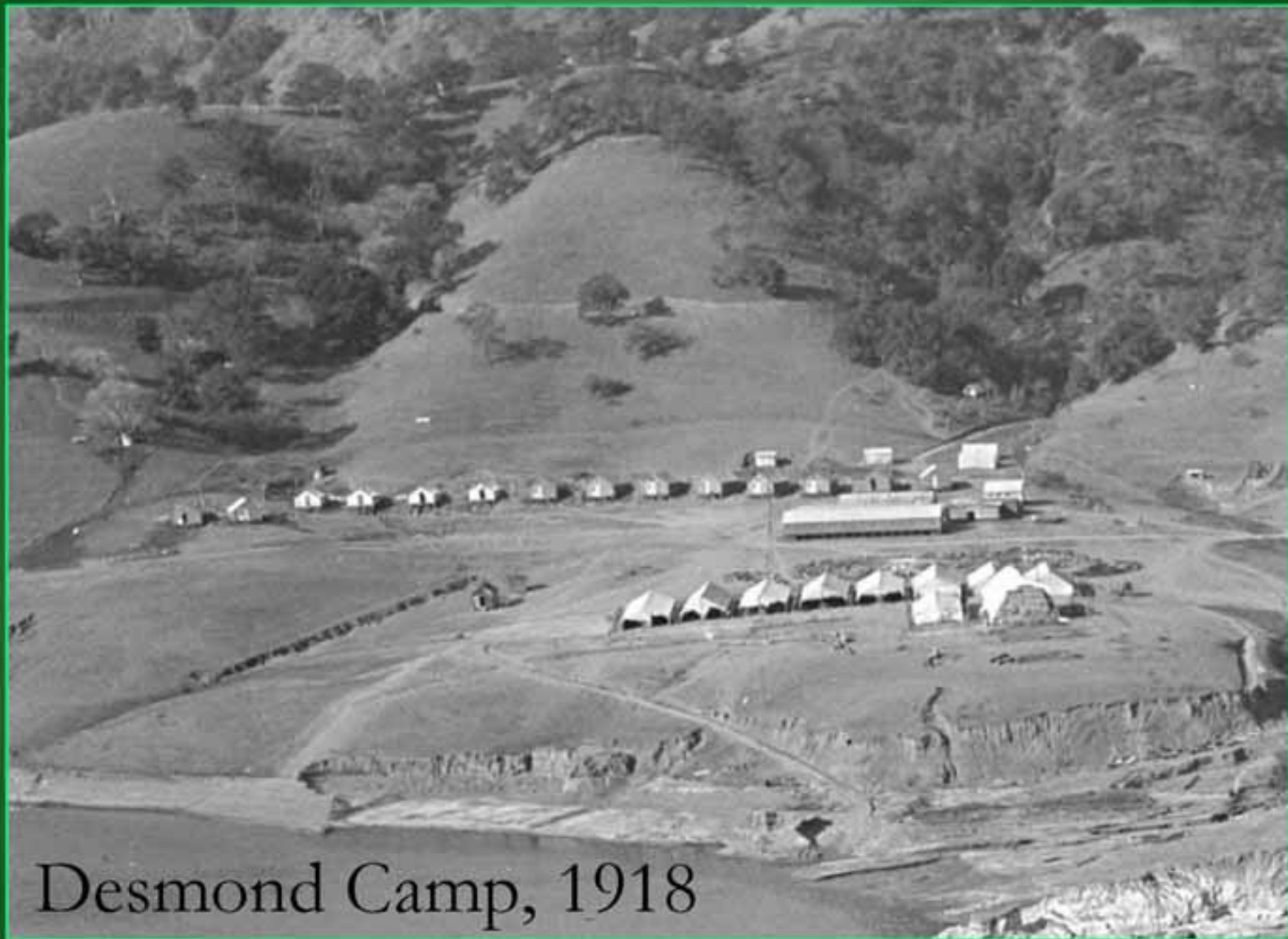
PACIFIC OCEAN

Desmond Camp

CAL AVERAS RESERVOIR



Desmond camp under construction, 1913



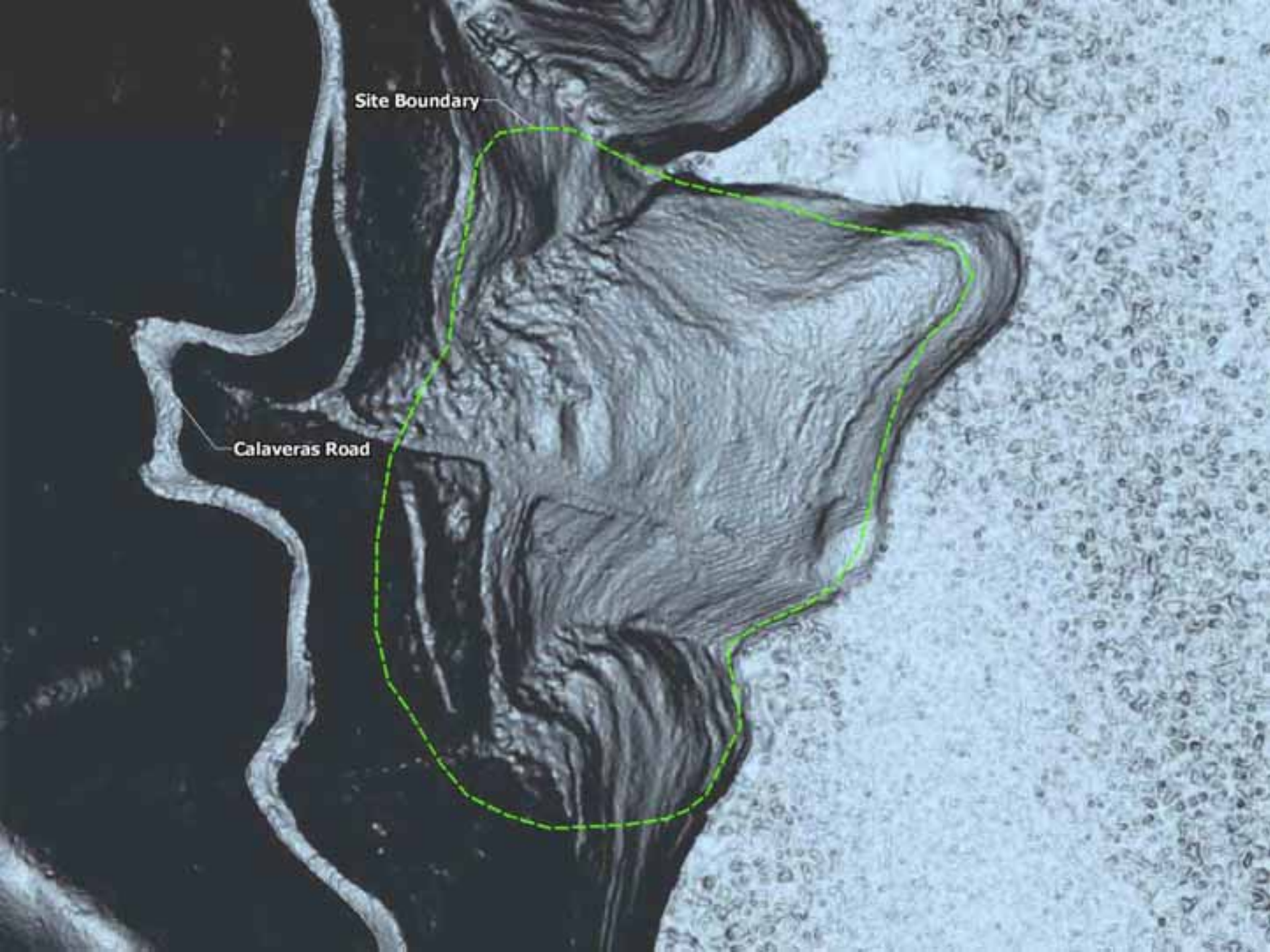
Desmond Camp, 1918

Desmond Camp, today



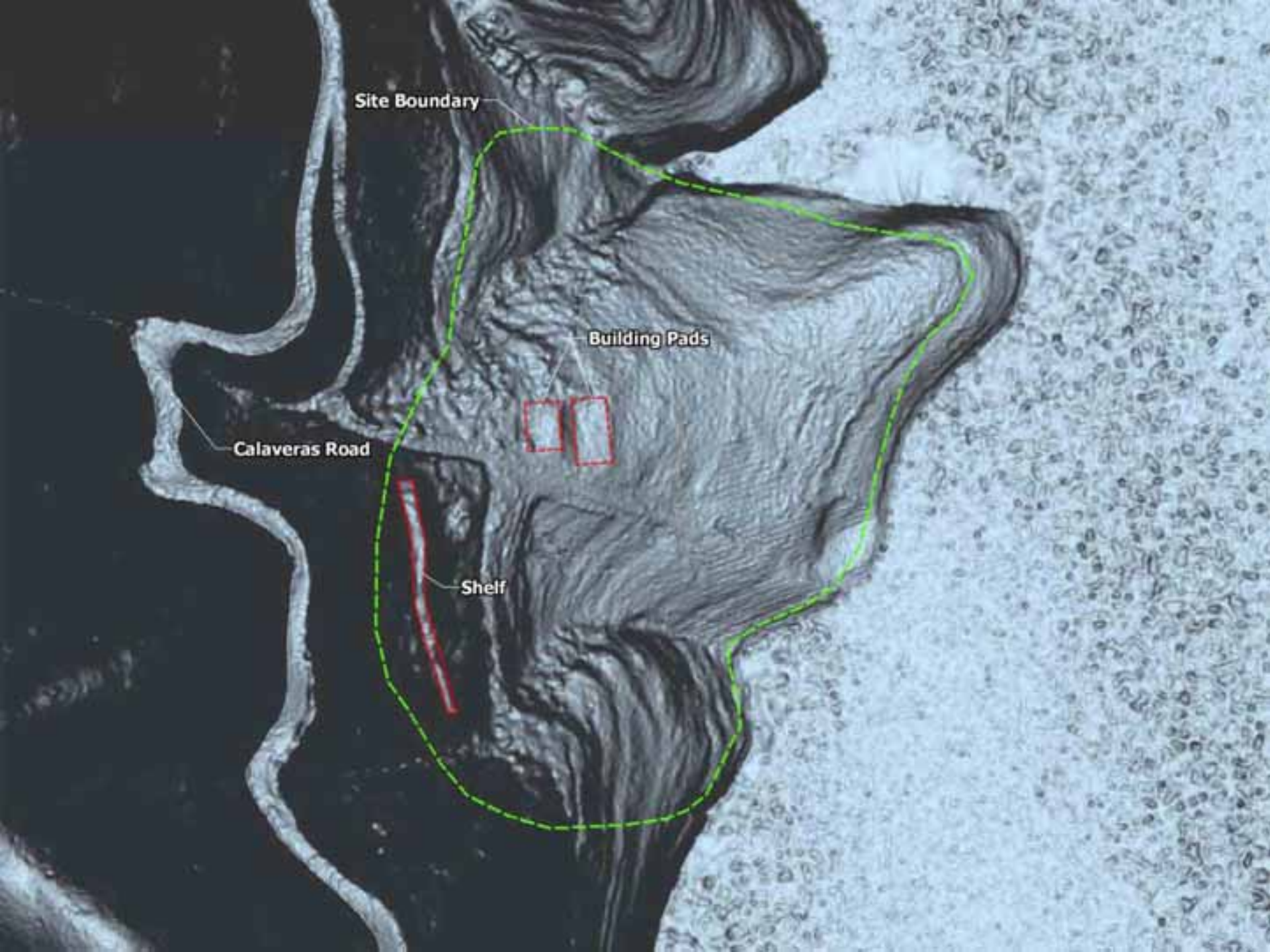






Site Boundary

Calaveras Road

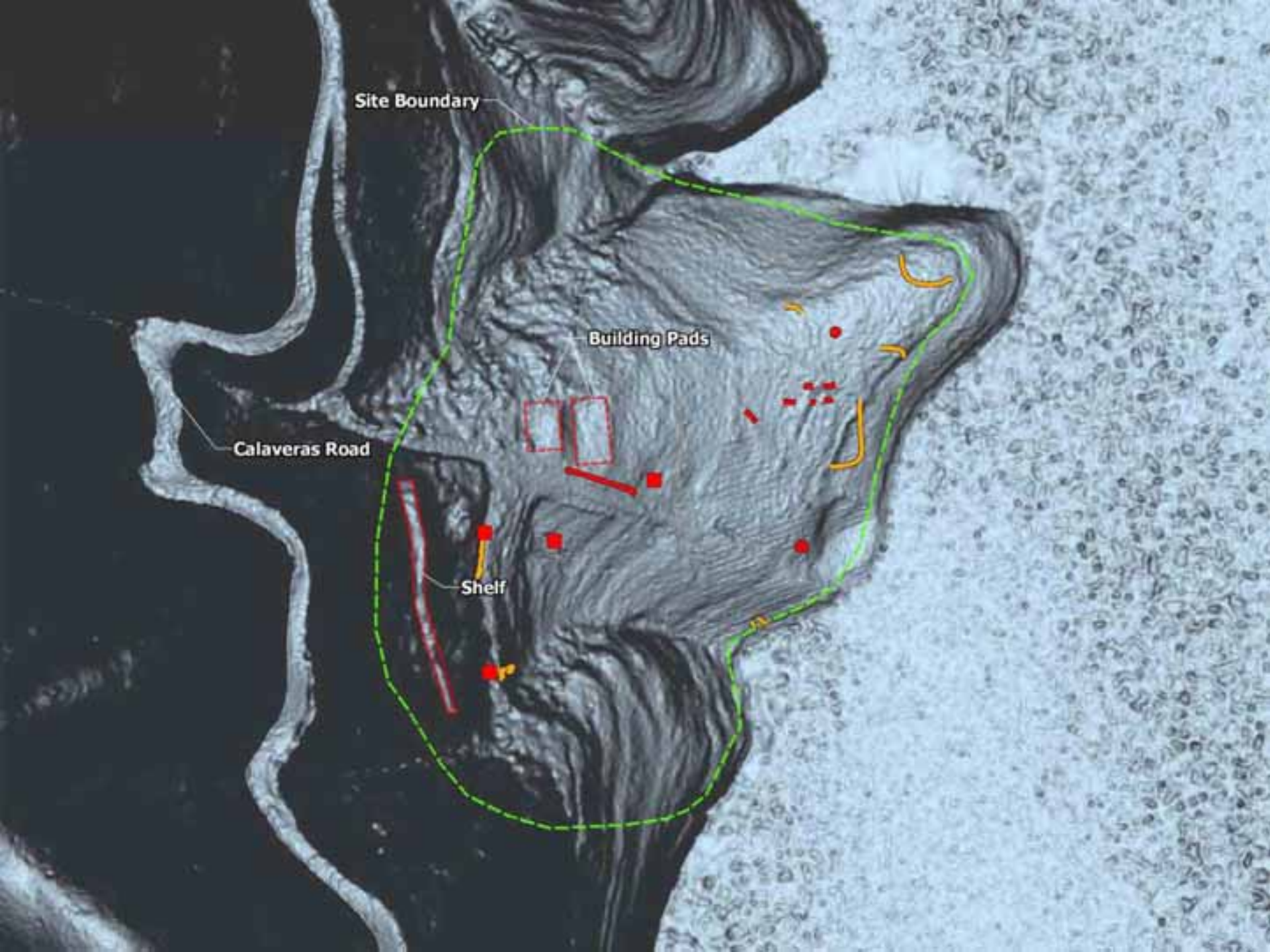


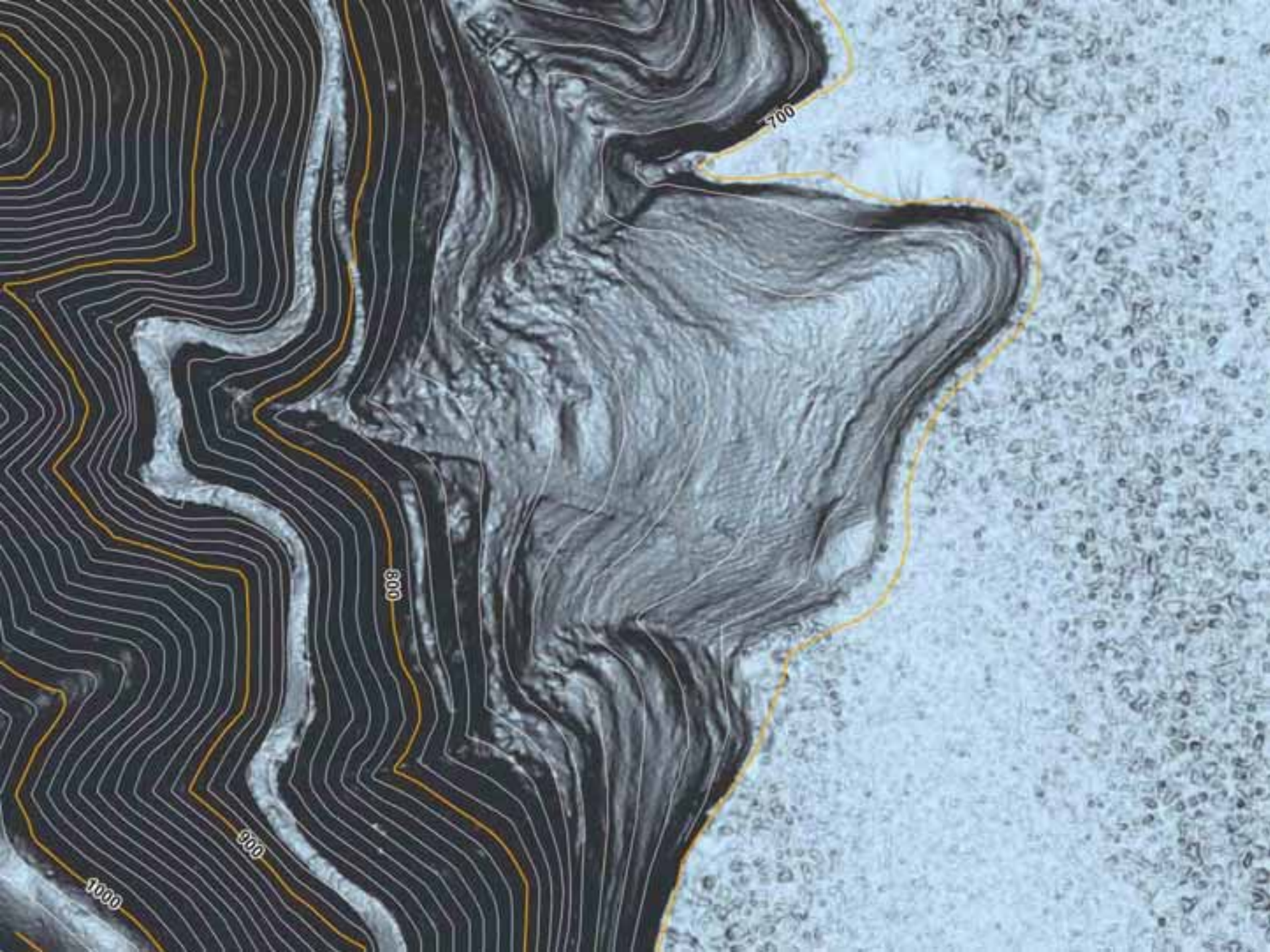
Site Boundary

Building Pads

Calaveras Road

Shelf



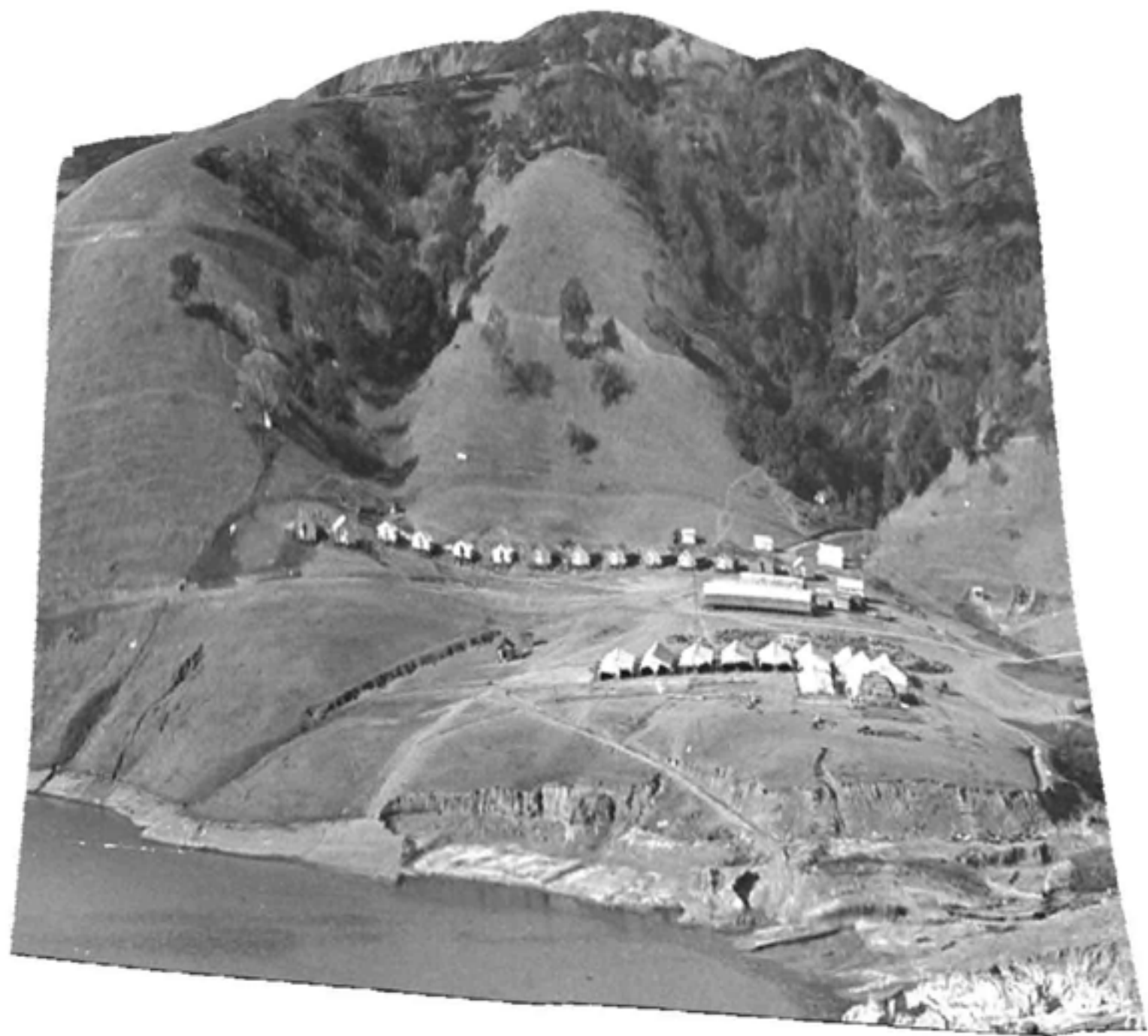


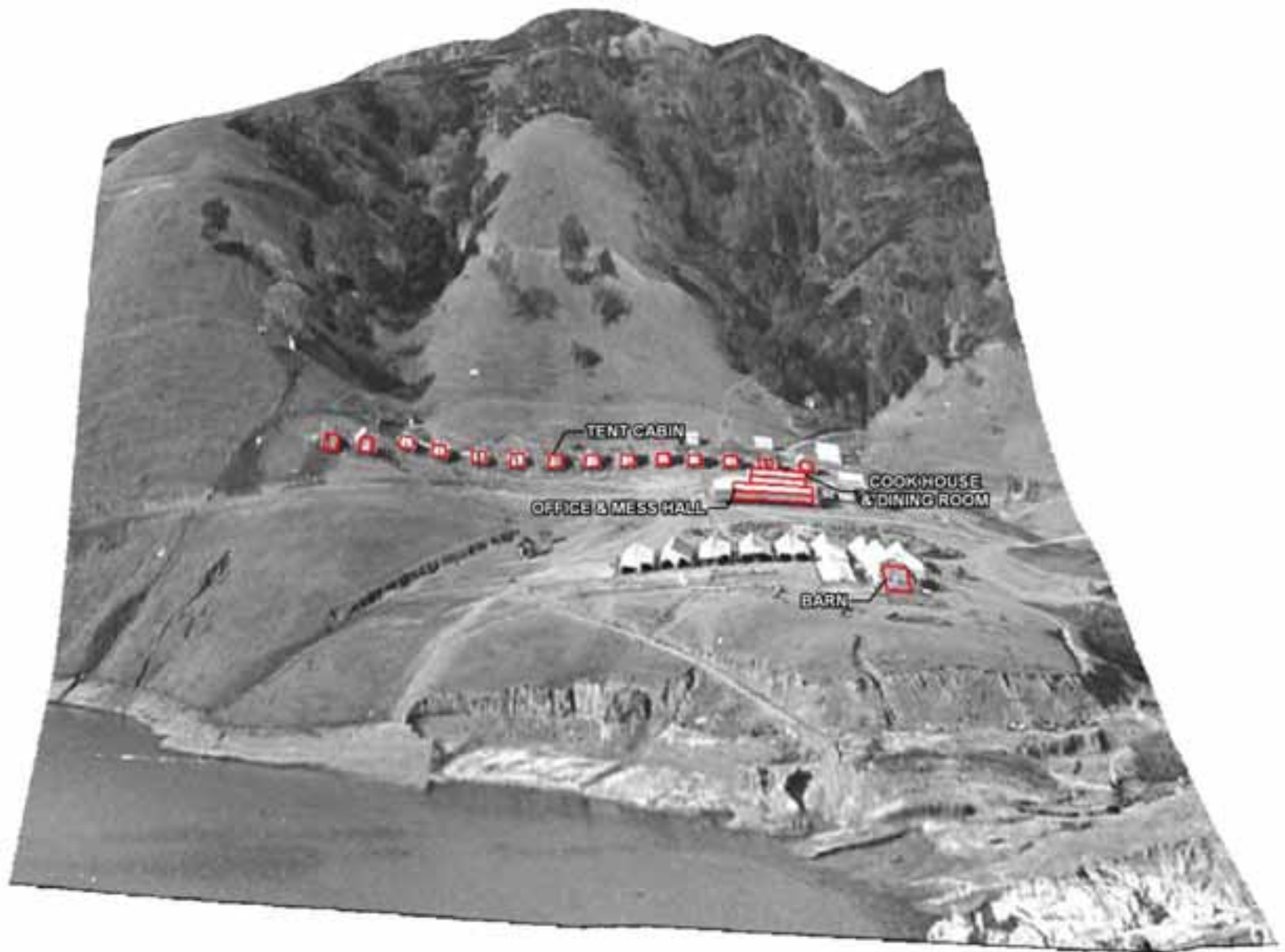










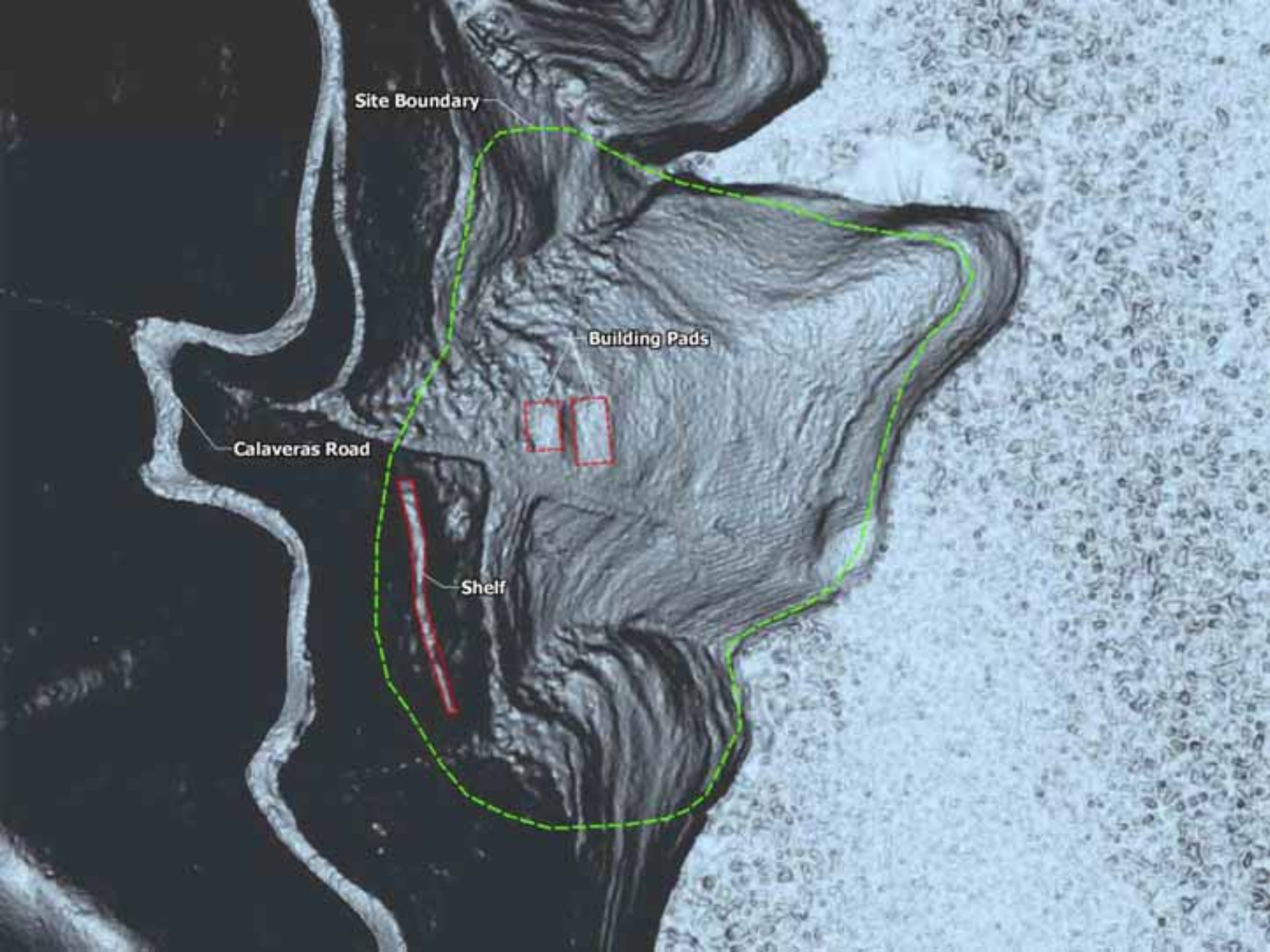


TENT CABIN

OFFICE & MESS HALL

COOKHOUSE & DINING ROOM

BARN



Site Boundary

Building Pads

Calaveras Road

Shelf



Site Boundary

Mess Hall
and Cook House

Barn
and Corrals

Calaveras Road

Tent Cabins

1913 SVWC Purchase records

Dining rooms, store houses, kitchens... board floors and one-half walls, canvas roofed;

Purchase of four tents and rental of twelve, to accommodate 450 men;

Purchase and erection of steel and wire bunks to accommodate 650 men;

Leading water 2600 feet, by 2" galvanized iron pipe to 2000 gallon reservoir above campsite;

Water and sewer system, including 3000 ft. 1" black iron pipe

(SVWC 1914).

1926 SVWC Camp Inventory

Office and mess hall—floored, electric lights, "papered roof" office, tongue and groove inside, footprint 18 feet × 67 feet, and 20 feet tall

Cook house and dining room—wooden roof, electric lights, floored, footprint 19 feet × 96 feet, and 20 feet tall

Two bunkhouses—floored, "paper tops," electric lights, portable

Eleven bunkhouses—floored, "paper tops," electric lights, portable, footprint 16 feet × 24 feet, and 9 feet tall

Bunkhouse—12 rooms, floored, "paper roof," with porch 3 feet wide, electric lights, footprint 14 feet × 167 feet, and 11 feet tall

Bath house—floored, corrugated galvanized top and sides, electric lights, 7 feet × 12 feet, and 8 feet tall

Butcher shop—wooden roof, floored, electric lights, footprint 10 feet 6 inches × 32 feet 6 inches, and 9 feet tall

Barn—no floor, electric lights, corrugated galvanized sides and roof, footprint 28 feet × 56 feet, 14 feet 6 inches tall

Toilets—various sizes listed from 4 feet × 4 feet to 6 feet 14 inches, 7 to 9 feet tall





E9200 E9400 E9600 E9800 E10000 E10200 E10400 E10600

N1000 N1100 N1200 N1300





Anomaly 1

Anomaly 3

Anomaly 2

**Dispersed "cloud"
of small dipole
anomalies**

**Anomaly 1
(metal pipes 2-inch diameter)**

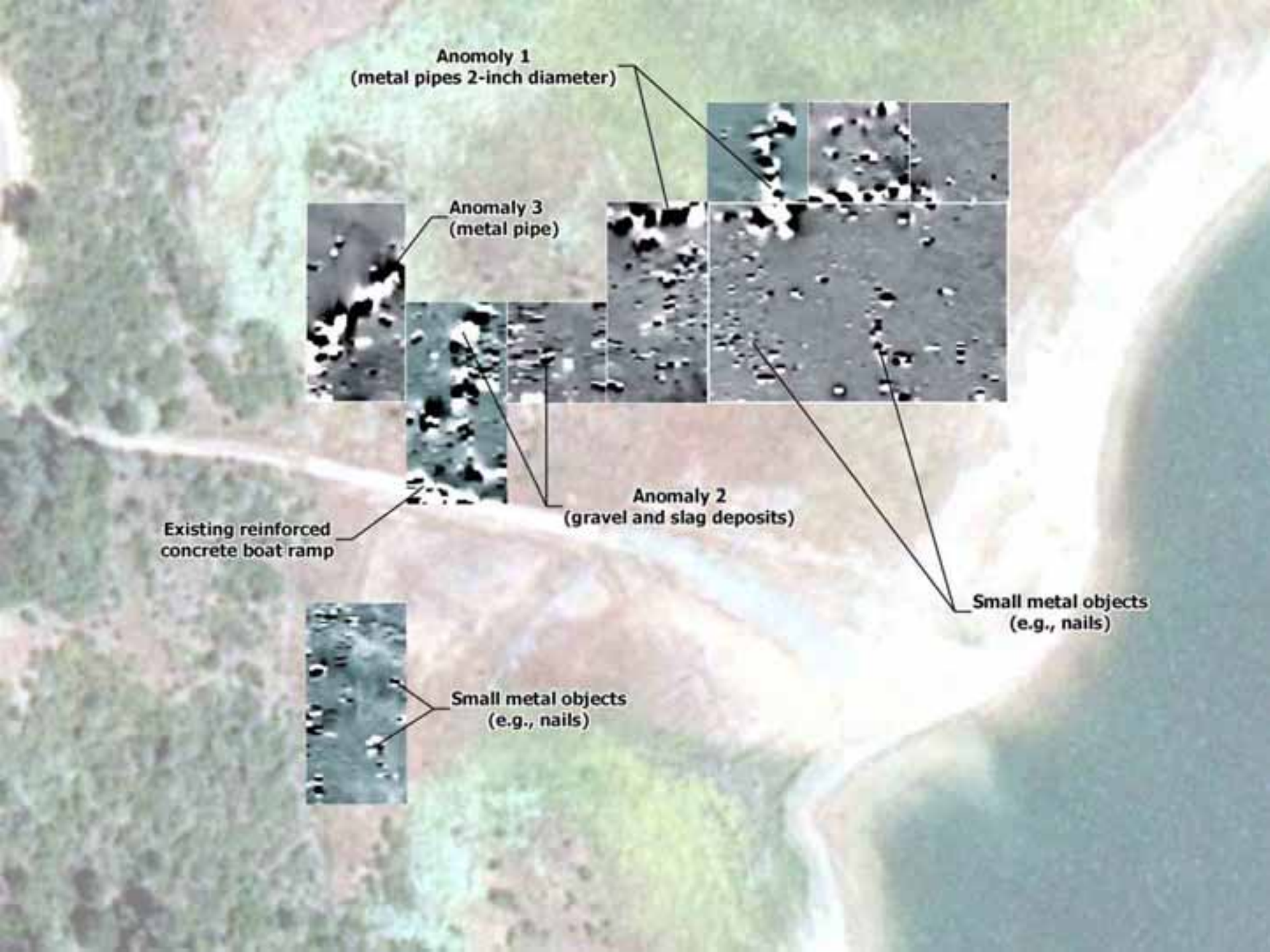
**Anomaly 3
(metal pipe)**

**Anomaly 2
(gravel and slag deposits)**

**Existing reinforced
concrete boat ramp**

**Small metal objects
(e.g., nails)**

**Small metal objects
(e.g., nails)**







Property types at Desmond Camp

Property Types with Archaeological Signatures Present

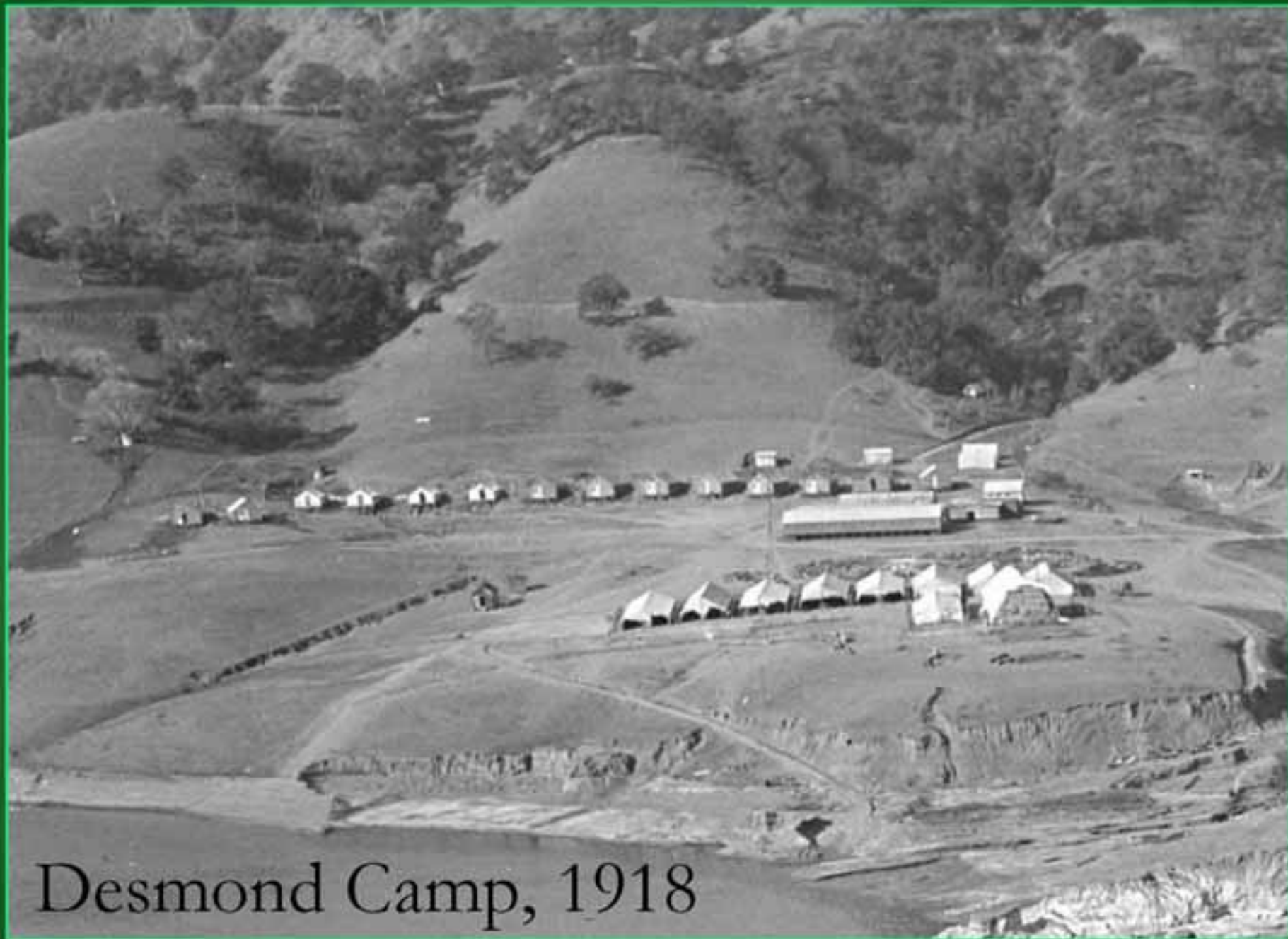
Property Type	Documented Structures	Archaeological Correlates
Residential features	Bunkhouses, tents	Terrace, flats, berm, rock alignments
Support features	Office/mess hall, cookhouse/dining room, store houses, kitchens, coal and wood sheds, barn, corrals, bath house, butcher shop, toilets	Flats, bottles, ceramic mug, table knife
Infrastructure features	Water and sewage pipes, electrical wires, road, 2000-gallon reservoir, railway	Pipes, light bulb fragments, road remnant, terraces, railway spike
Work features	Barn, corrals, blacksmith shop	Tack artifacts
Refuse disposal features	None documented	Sheet refuse

Artifacts recovered

Artifact Assemblage by Group

Group	Number	MNI	Percent	Percent MNI
Structural	156	112	28%	52%
Domestic	251	73	45%	34%
Personal	127	13	23%	6%
Activities	4	4	1%	2%
Indefinite Use	18	10	3%	5%
Modern	3	3	1%	1%
Totals	559	215	100%	100%

MNI = minimum number of individuals



Desmond Camp, 1918