



City Information System in KAGITHANE

Presenters

Kemal Çavuş

Hüseyin Koyun

Umut Zaim

Sevda Gül Ertürk

Kenan Duru

Esin Duran



History of the Municipality

- ▶ The area is very rich with historical and archeological buildings and assets
- ▶ In the time of Suleiman the magnificent the valley was known as 'Sadabad' and used by the Ottomans for hunting, riding and recreation
- ▶ The area was administrative part of Municipality of Sisli till 1987
- ▶ The administrative area is about 16 km² and has a population of 418,229

City Information History in the Municipality

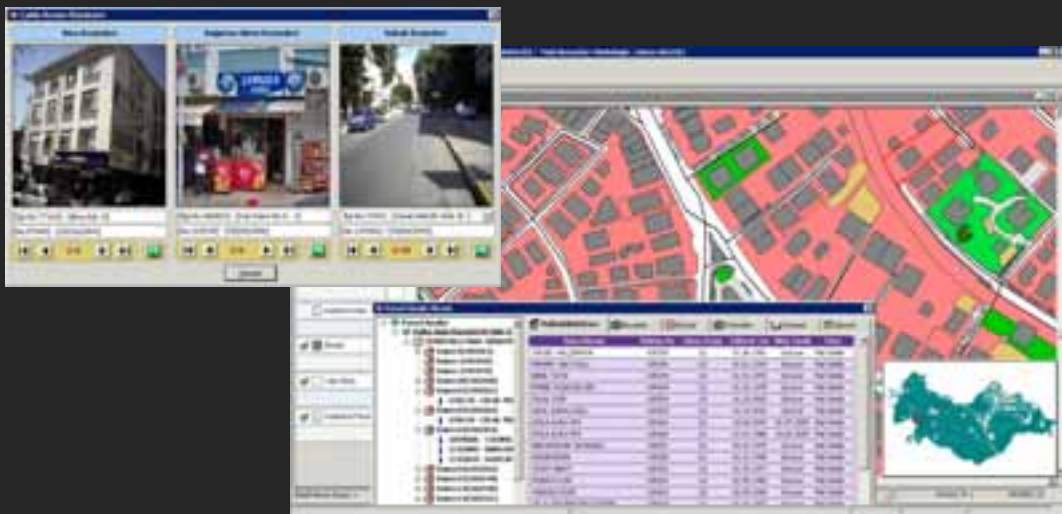
- ▶ Municipality Automation System was built to serve the citizens and manage the municipality in 1996
- ▶ The municipality had an automatic answering system to serve the citizens through the phone
- ▶ The old system of tracking citizen transactions was built on Linux platform
- ▶ All transactions and data were stored using IBM Informix
- ▶ Tracking done through one unique record that controlled the address information, the physical image of the address and the municipality record of the citizen

Why Need a City Information System

- ▶ The need to archive, update, analyze and track all municipal transactions
- ▶ The need for an integrated Address System
- ▶ The need for an automatic tracking of citizen transactions in the municipality
- ▶ The need for web services that enables e-government transactions.
- ▶ The need for a comprehensive system to manage the municipality.
- ▶ The old system was not capable to meet the growing needs of the Municipality

u.KBS – The City Information System

- ▶ Fully integrated (GIS+MIS+CRM+HR+e)
- ▶ Embedded GIS solution
- ▶ Unified Structure
- ▶ Work Planning, Performance Management, Total Quality Management, Logging, SMS/e-mail utility
- ▶ Advanced Picture recording



What is Included

- ▶ CRM
 - ▶ Citizen Service, Call Center
 - ▶ E-mail integration
 - ▶ Content Management
- ▶ Social Aid Tracking
- ▶ City Guide and zoning information
- ▶ Business Process Management and Planning
- ▶ Address Information System Integration
- ▶ Revenue Increasing Activities
- ▶ Parcel Information



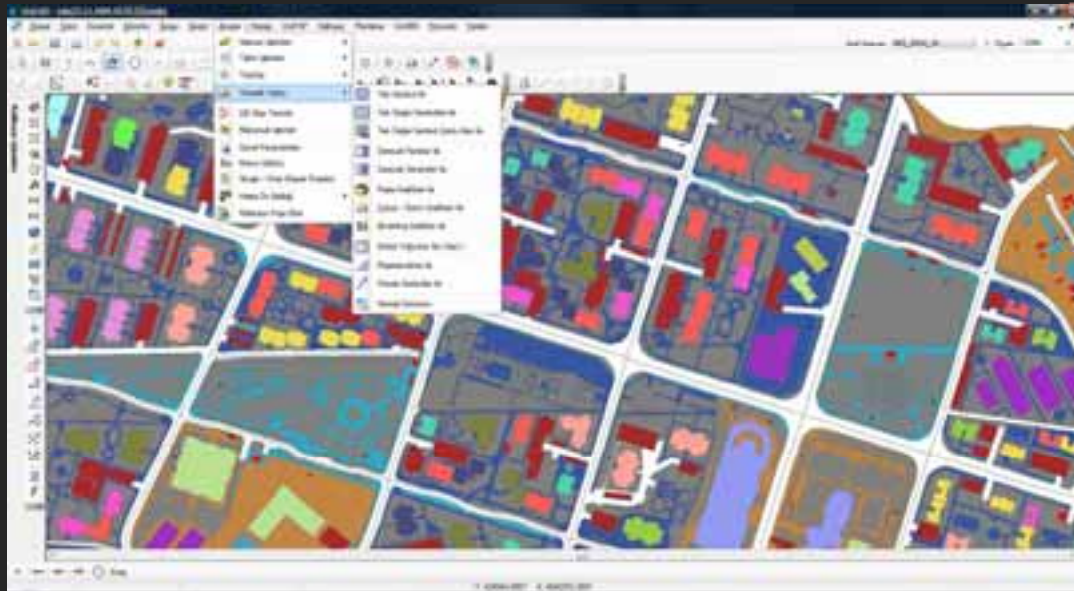
Advantages of Using *u.KBS*

- ▶ Integration of digital archive system
- ▶ 100% data integrity thanks to using entirely relational databases
- ▶ Automatic recognition of accruals, payment collections and payrolls
- ▶ Flexible and open structure system
- ▶ Comprehensive Administrator desktop package
- ▶ Integrating CRM and ERP with GIS and web applications
- ▶ Web applications that provide query services to citizens like Parcel Query, Address Query, and Activity Query.

Spatial Editor – *UniGIS*

Infrastructure

- ▶ ESRI ArcGIS Engine runtime (9.x)
- ▶ Microsoft Visual Studio.NET C# language
- ▶ ArcGIS Server Support



Why Need *Uni*GIS

- ▶ Based on industry leader ESRI technology
- ▶ To-date spatial data for City Information System (U.KBS)
- ▶ Database support
- ▶ High-speed data production
- ▶ Low cost GIS&CAD tool
- ▶ Multiuser editing
- ▶ Effective support from manufacturer

UniGIS Capabilities

- ▶ Combination of CAD&GIS Functionalities
- ▶ Raster Data Editing
- ▶ Fully integrated with *n.KBS*
- ▶ English and Turkish Support
- ▶ Rich GIS Functionalities

Why Use *Uni*GIS

1

Low-cost and integrated CAD&GIS tool

2

Directly GIS data creation and editing

3

Work on the database with the basis of the database user privileges

4

Compliance with national and international standards

5

International solutions, integration and interoperability

Lessons Learned

- ▶ Digital Archiving is much more sustainable than any type of archiving systems and updating is much more simpler.
- ▶ Relational data bases are more reliable in integrating the management information and spatial information
- ▶ ESRI technology because of its interoperability function was the right choice.
- ▶ Updated spatial and non-spatial data should be kept in a common database
- ▶ Work with a company that had both MIS and GIS experience was a wise decision.
- ▶ Serving the citizen through the web has both satisfied the citizens and lowered tracking and updating costs for the municipality.

Next Steps

- ▶ Development and renewal of the existing system to comply with the new technology trends and meet growing demands of the citizens and municipality needs.
- ▶ Make the Interfaces more user friendly.
- ▶ Add more functions that meets the city needs.
- ▶ Encourage citizens to use web based services and promote Spatial Information awareness



Thank You

Danke

Gracias

Merci

谢谢

شكرا...

Teşekkürler

Grazie

For further Information Please contact :

Municipality of Kagithane belediye@kagithane.bel.tr

Universal Information Technologies uzaim@uni-yaz.com or serturk@uni-yaz.com

