



"Zambians picking up our GIS experience"

San Diego 24 July, 2012

Eva Jirner Lindström

Geological Survey of Sweden



SGU – surveying the geology of Sweden

By car, on foot, by air and by boat we study features including:

- Bedrock
- Quaternary deposits
- Groundwater
- Marine geology.



Geology for society

Uses of our material include

- Societal planning
- Building and construction
- Drinking water supply.



Geology for society

Uses of our material include

- Environmental monitoring and protection
- Management of natural resources
- Landslip and landslide risk assessment.



“We need someone who can teach geology students GIS...”



MeetingPoints Mining

- partnership in the mineral sector



Sida

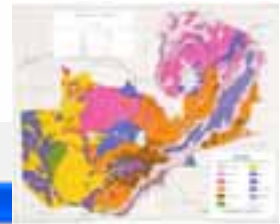
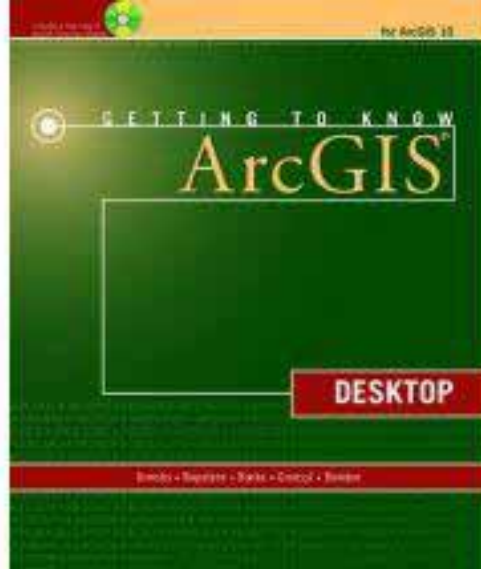
SWEDISH INTERNATIONAL DEVELOPMENT
COOPERATION AGENCY

SGU

Sveriges geologiska undersökning
Geological Survey of Sweden



Preparations



Administrative boundaries

Latitude and longitude coordinates

Map Maker DRA format

ZAM_boundaries_DRA.zip 62.04
20 downloads

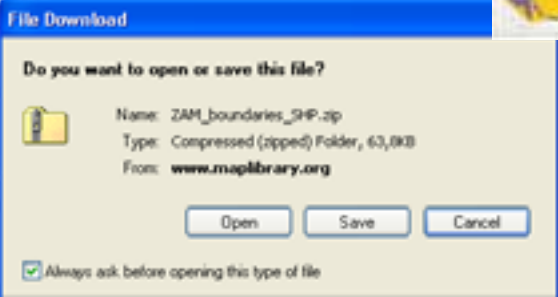
ESRI Shape file format

ZAM_boundaries_SHP.zip 63.85
88 downloads

MapInfo MIF format

ZAM_boundaries_MIF.zip 44.00
17 downloads

UTM coordinates - zone 35



While files from the Internet can be useful, some files can potentially harm your computer. If you do not trust the source, do not open or save this file. What's the risk?

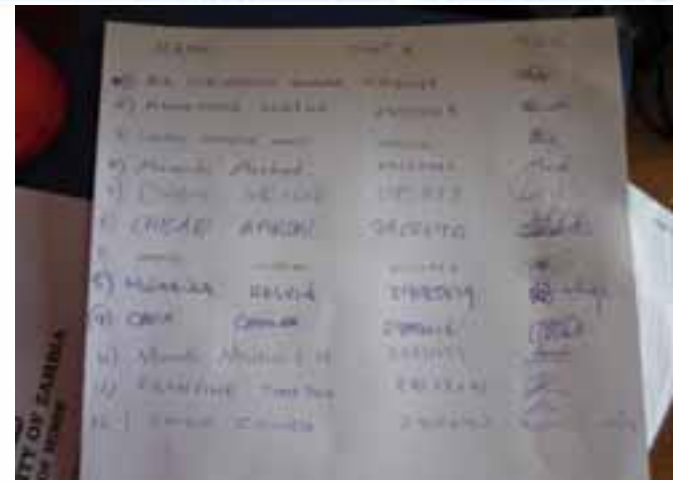


September 2011



SGU

Sveriges geologiska undersökning

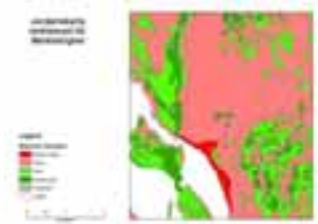


UNIVERSITY OF ZAMBIA



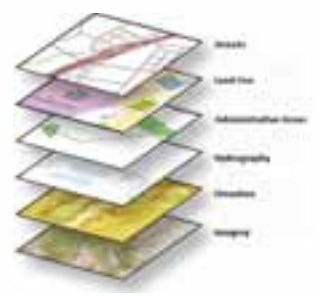
Preparations while waiting for the students





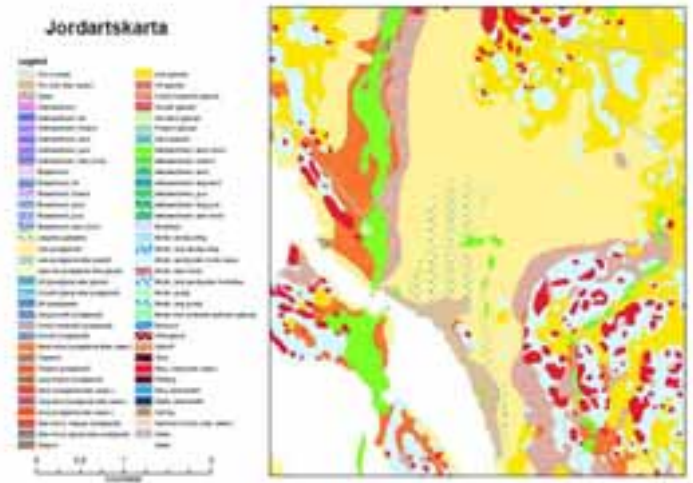
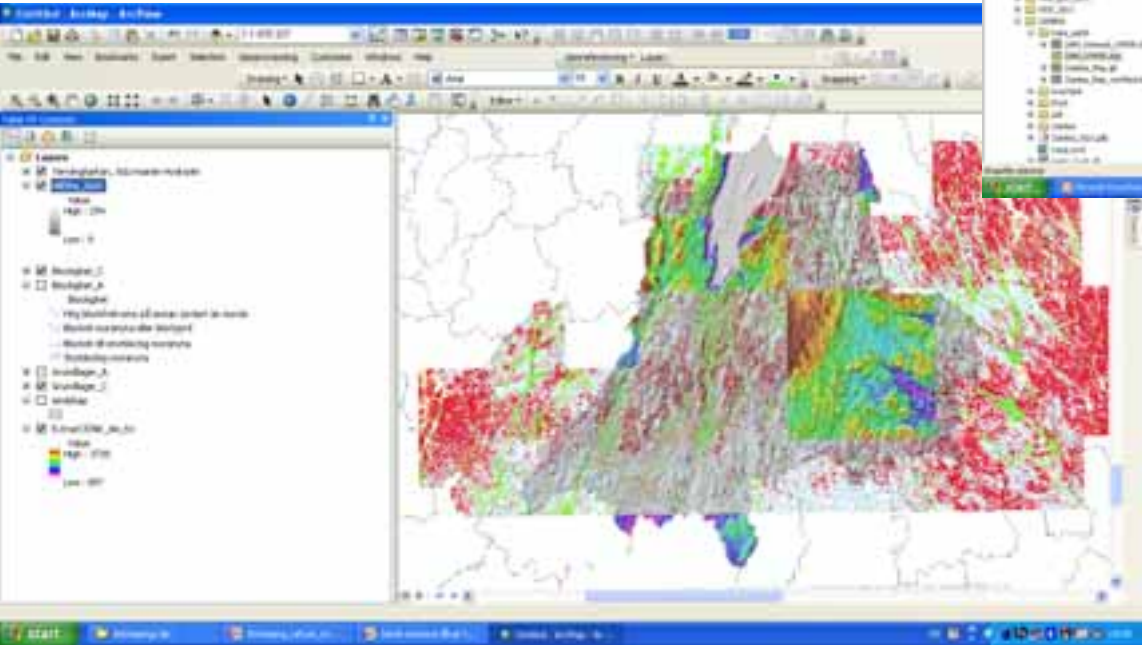
What is GIS?

Region	Area (km²)	Population	Density (inhabitants/km²)
North	150,000	1,000,000	6.7
Central	100,000	2,000,000	20.0
South	50,000	3,000,000	60.0





What is ArcGIS?





How can we get data for our maps?

How can we
make a map?



Search the web!

map+Zambia....

.gif from internet - - - rectify – edit....

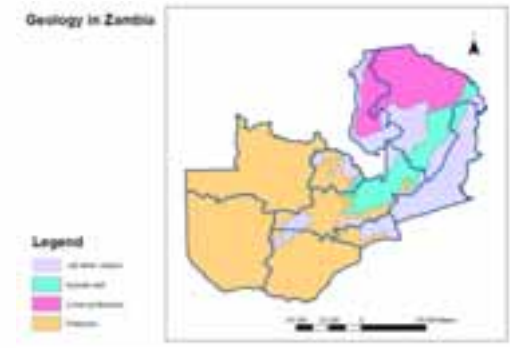
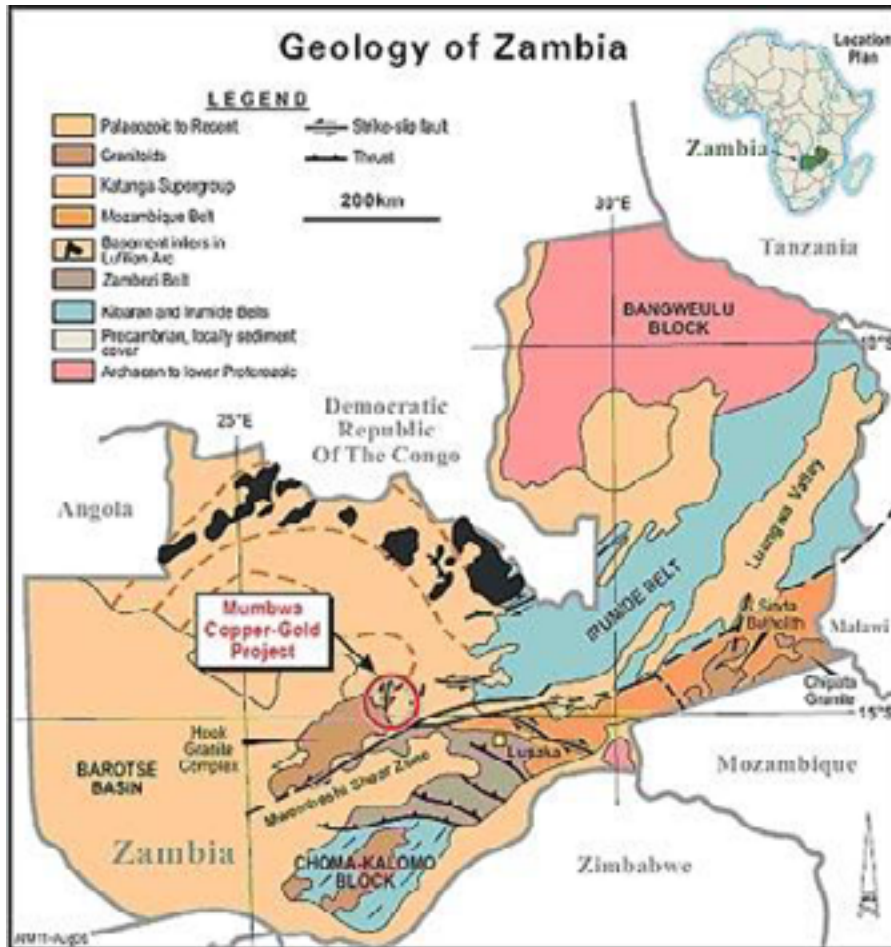
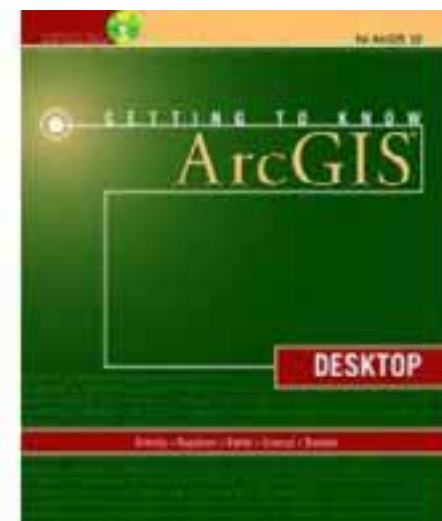
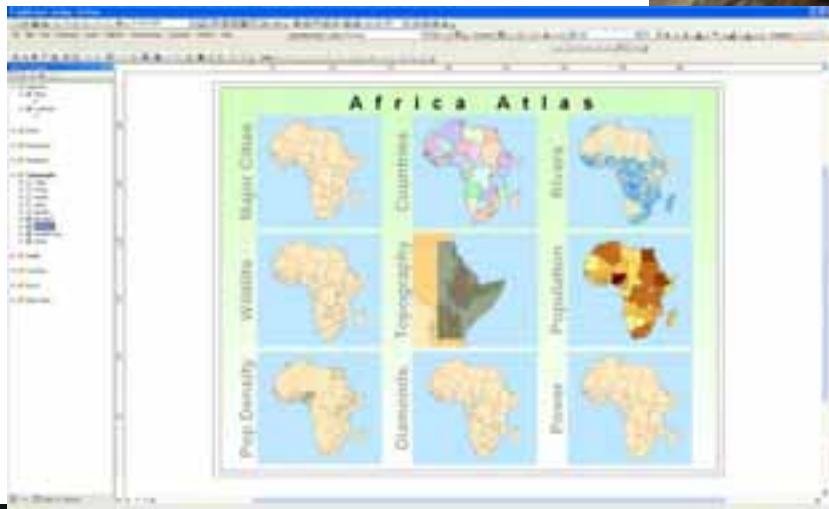


Image courtesy of AIM



Exercises





Map examples:

ROAD NETWORK

Lusaka

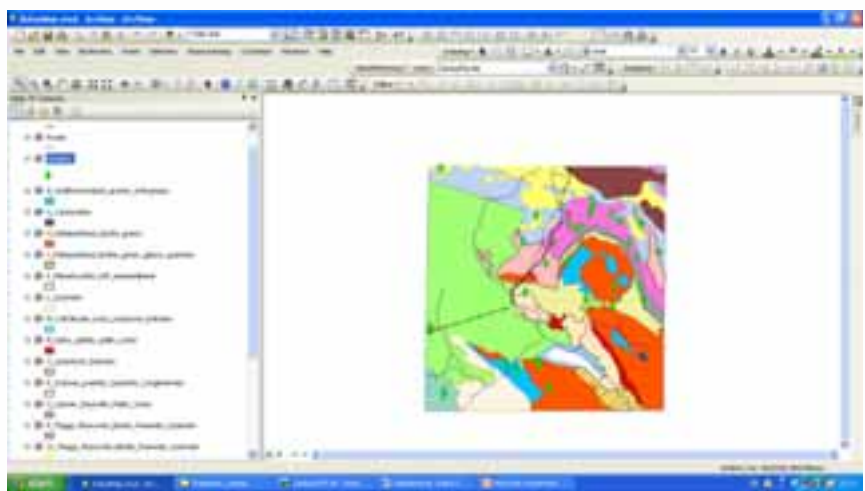


SCHOOL OF MINES Estab-1973





The future:





Tourists





Thank you!

Any questions?



eva.jirner.lindstrom@sgu.se