



Using GIS Server to Distribute Asset, Planning and Decision Making Information

Brad Thompson (Supervisor, Data Services– Planning)

Hersh Singh (Strategic Analyst – Planning)

ESRI Users Conference

San Diego, CA.

July, 2012

Transit Agencies in Northeast Illinois / Chicagoland Area





GIS at the RTA

- **No full time GIS staff / No programming staff**
- **2 ArcInfo and 4 ArcView licenses.**
- **ArcIMS – www.RTAMS.org website.**
- **3D Analyst / Spatial Analyst– extrusions / densities.**



Web Mapping Applications using the ArcGIS Viewer for Flex

Internal (RTA Only)

- **ADA**
 - Facility Assignment
 - Service Area
- **Transit Benefit Companies**
- **Capital Asset Condition (future)**

External (Public access)

- **TOD Locations**
- **Planned Signal Priority Corridors**
- **Inter-agency Signage Locations**
- **Transit Demand Index (TDI)**
- **ESRI Demographic Data**
- **Political Jurisdictions**



Demonstration

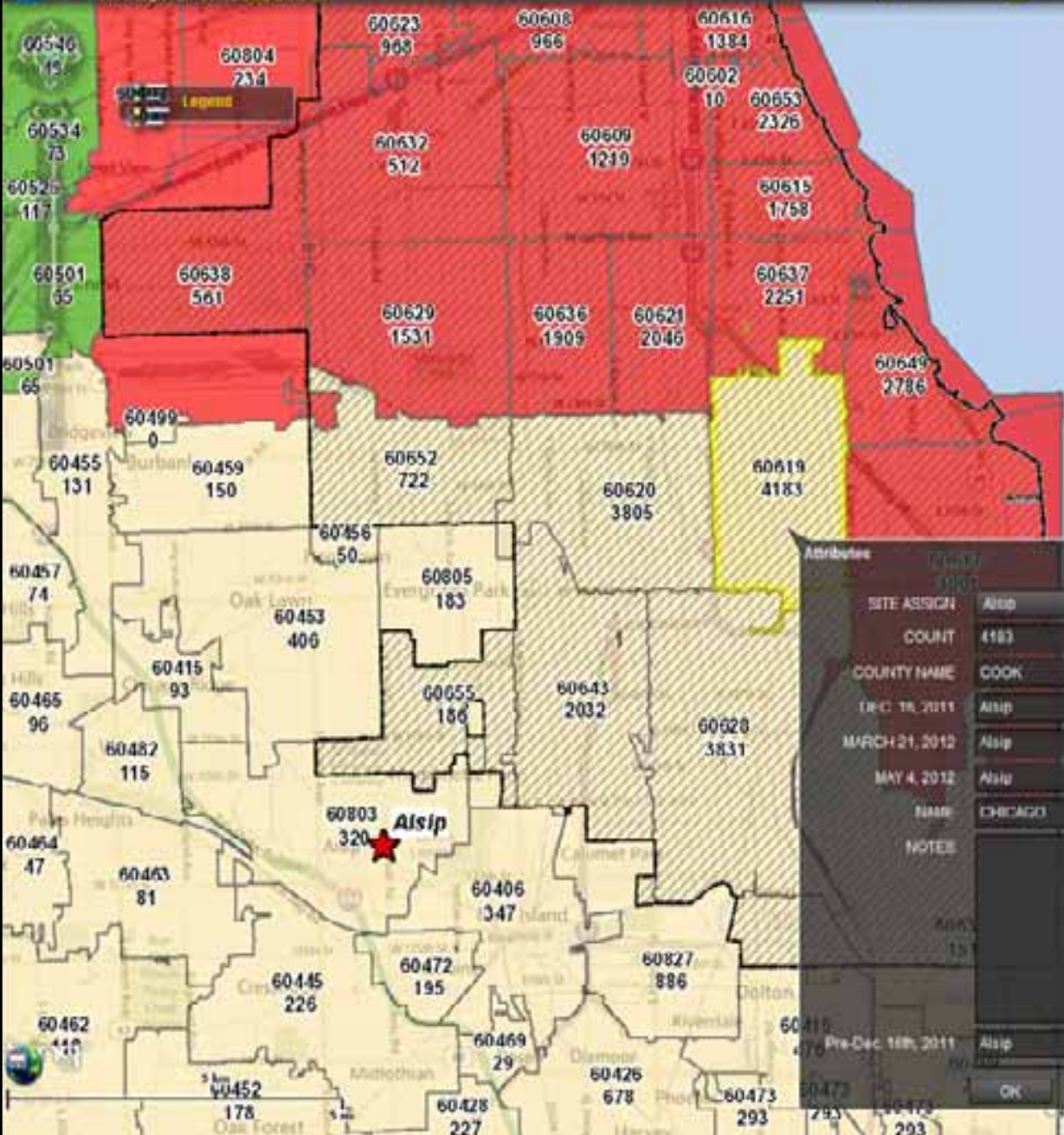
rtams
Mapping Applications
Home | [Interactive Map](#) | [Site Map](#)

● Ridership Statistics
● Routes, Stations & Lines
● Planning
● Capital Projects
● Vehicles & Rolling Stock
● Sales Tax & Financial Reports
● Political Jurisdictions
● CTPP Data & Demographics

RTAMS Mapping Applications

<div style="border: 1px solid #ccc; padding: 5px; margin-bottom: 10px;"> <p style="text-align: center; font-weight: bold; font-size: 10px;">Transit Oriented Development Locations</p>  </div> <p>RTA Transit Oriented Development Locations</p> <p>This application displays the RTA Community Planning efforts for the Chicagoland Area. The application displays locations of Transit Oriented Development by the study status - Completed, In Progress, or Proposed.</p>	<div style="border: 1px solid #ccc; padding: 5px; margin-bottom: 10px;"> <p style="text-align: center; font-weight: bold; font-size: 10px;">Illinois 2012 Congressional Districts</p>  </div> <p>Illinois Congressional Districts 2012</p> <p>This application displays the geographic area of the 2012 Illinois Congressional Districts effective November 3, 2012. Included are the transit services for the region.</p>
<div style="border: 1px solid #ccc; padding: 5px; margin-bottom: 10px;"> <p style="text-align: center; font-weight: bold; font-size: 10px;">Inter-Agency Signage Locations</p>  </div> <p>Inter-Agency Signage Locations</p> <p>This application displays the locations where the RTA is demonstrating Inter-Agency signage. The locations are rendered according to the status of the signs - Underway, Phase II, and Proposed.</p>	<div style="border: 1px solid #ccc; padding: 5px; margin-bottom: 10px;"> <p style="text-align: center; font-weight: bold; font-size: 10px;">Regional Transit Index</p>  </div> <p>Regional Transit Index</p> <p>This application displays a combination of demographics that are indicators of an area's potential to generate local transit trips, based on transit trip rates in the Chicago region. The combined index is displayed at the CMAP zone level and does not include factors such as pedestrian networks or drive access to a transit stop.</p>
<div style="border: 1px solid #ccc; padding: 5px; margin-bottom: 10px;"> <p style="text-align: center; font-weight: bold; font-size: 10px;">Transit Signal Priority Corridors</p>  </div> <p>Transit Signal Priority Corridors</p> <p>This application displays the locations of Transit Signal Priority projects in the Chicagoland region. The application displays corridor locations rendered by the project status - Completed, In Progress, and Proposed.</p>	<div style="border: 1px solid #ccc; padding: 5px; margin-bottom: 10px;"> <p style="text-align: center; font-weight: bold; font-size: 10px;">Regional Demographics</p>  </div> <p>Regional Demographics</p> <p>This application displays demographic information developed by Environmental Systems Research Institute (ESRI) which is derived from the 2010 U.S. Census. The data is displayed at several different geographies based on the users zoom level. The data is managed and served by ESRI's Online Data Service.</p>

[Site Map](#) | [Feedback](#) | [Mapping Applications](#) | [About RTAMS](#) | [Data and Updates](#) | [Terms and Conditions](#) | [Glossary](#) | [Log In](#)



Edit

Select template to create feature

Edit Zip Code Assignments

- Alisp
- Higgins
- Libertyville
- Naperville
- Peoria

Attributes

SITE ASSIGN: Alisp

COUNT: 4183

COUNTY NAME: COOK

TRC TR 2011: Alisp

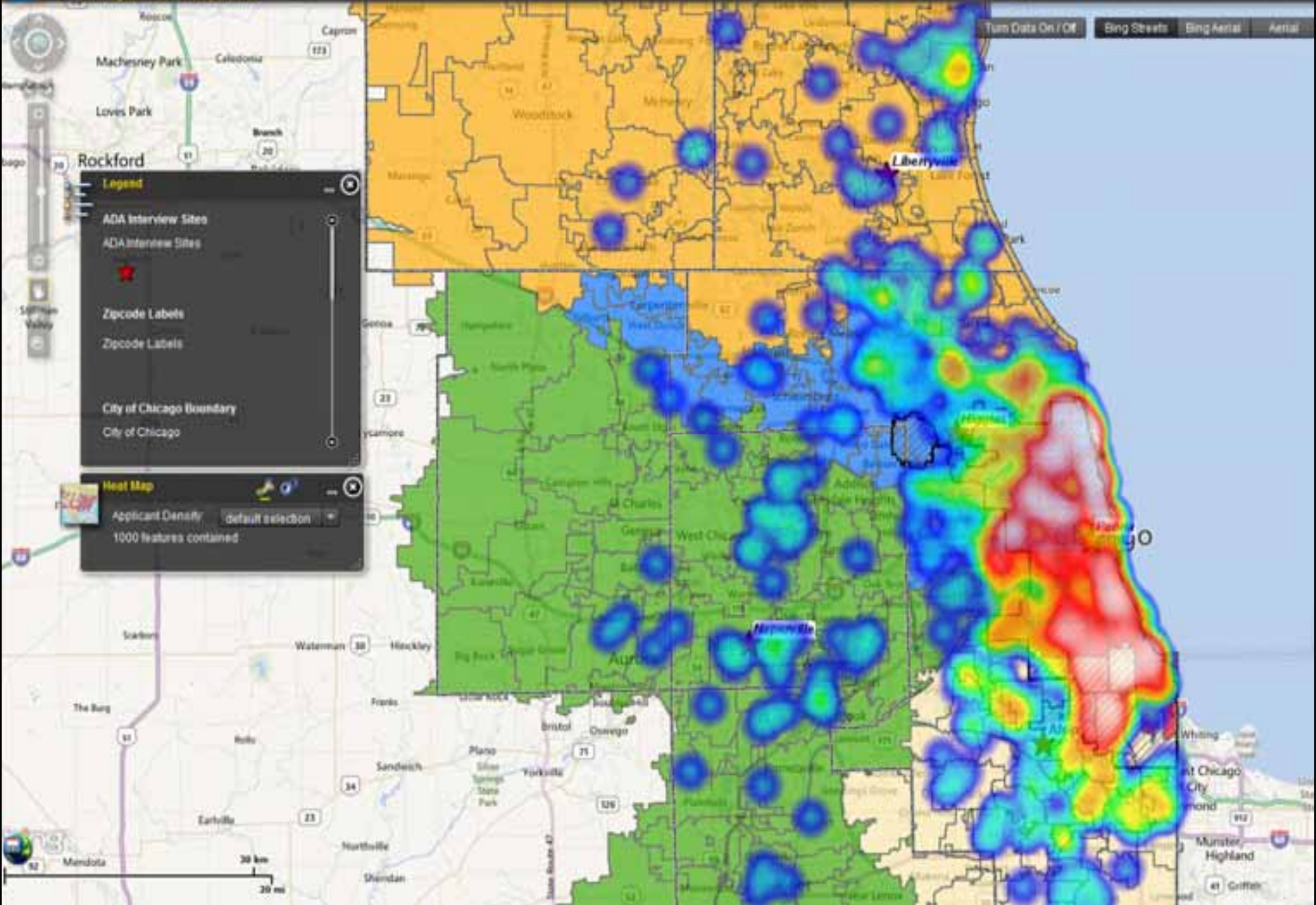
MARCH 21, 2012: Alisp

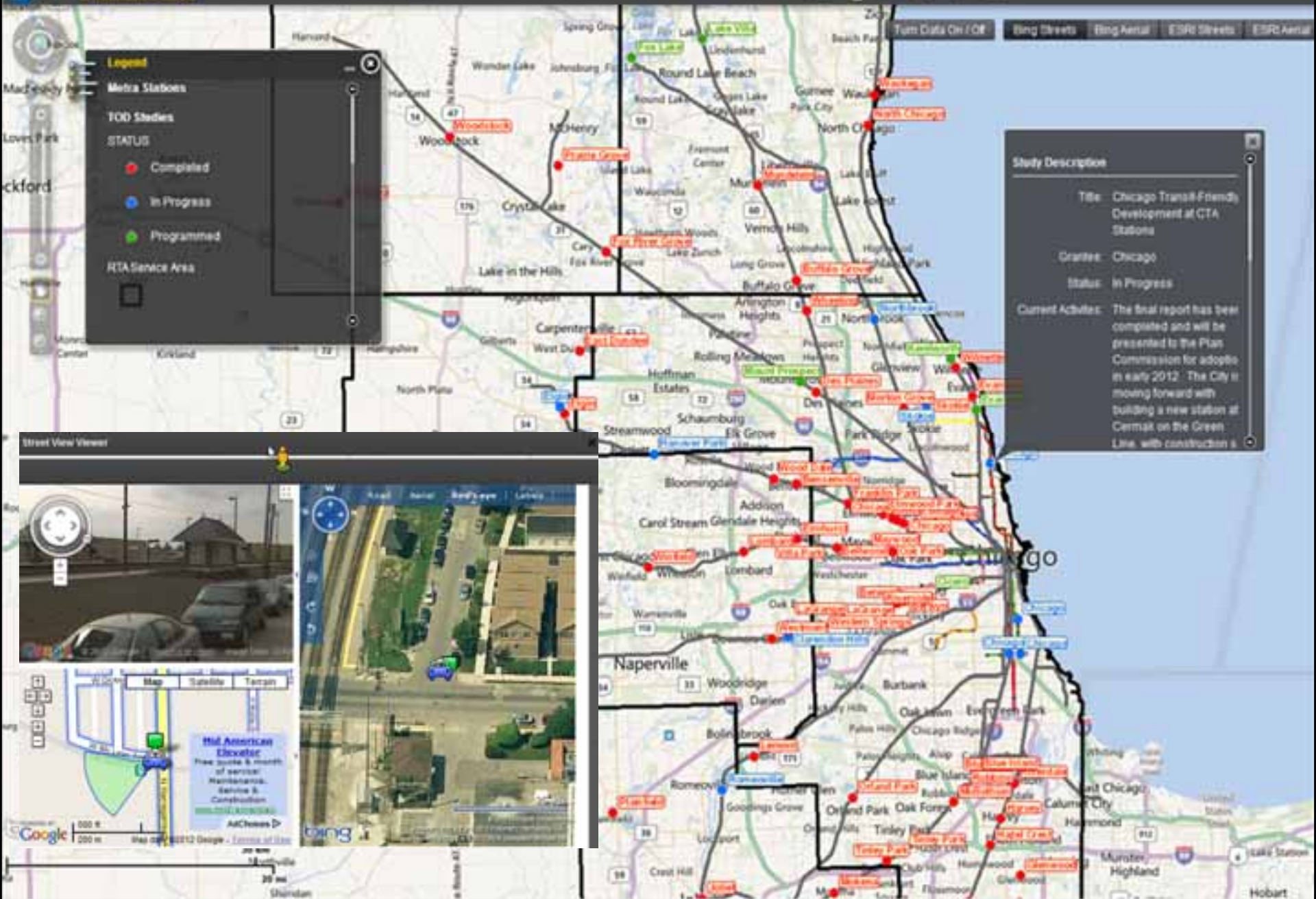
MAY 4, 2012: Alisp

NAME: CHICAGO

NOTE:

OK





Legend

- Metra Stations
- TOD Studies
- STATUS
- Completed (Red dot)
- In Progress (Blue dot)
- Programmed (Green dot)
- RTA Service Area (Black outline)

Study Description

Title: Chicago Transit-Friendly Development at CTA Stations

Grantee: Chicago

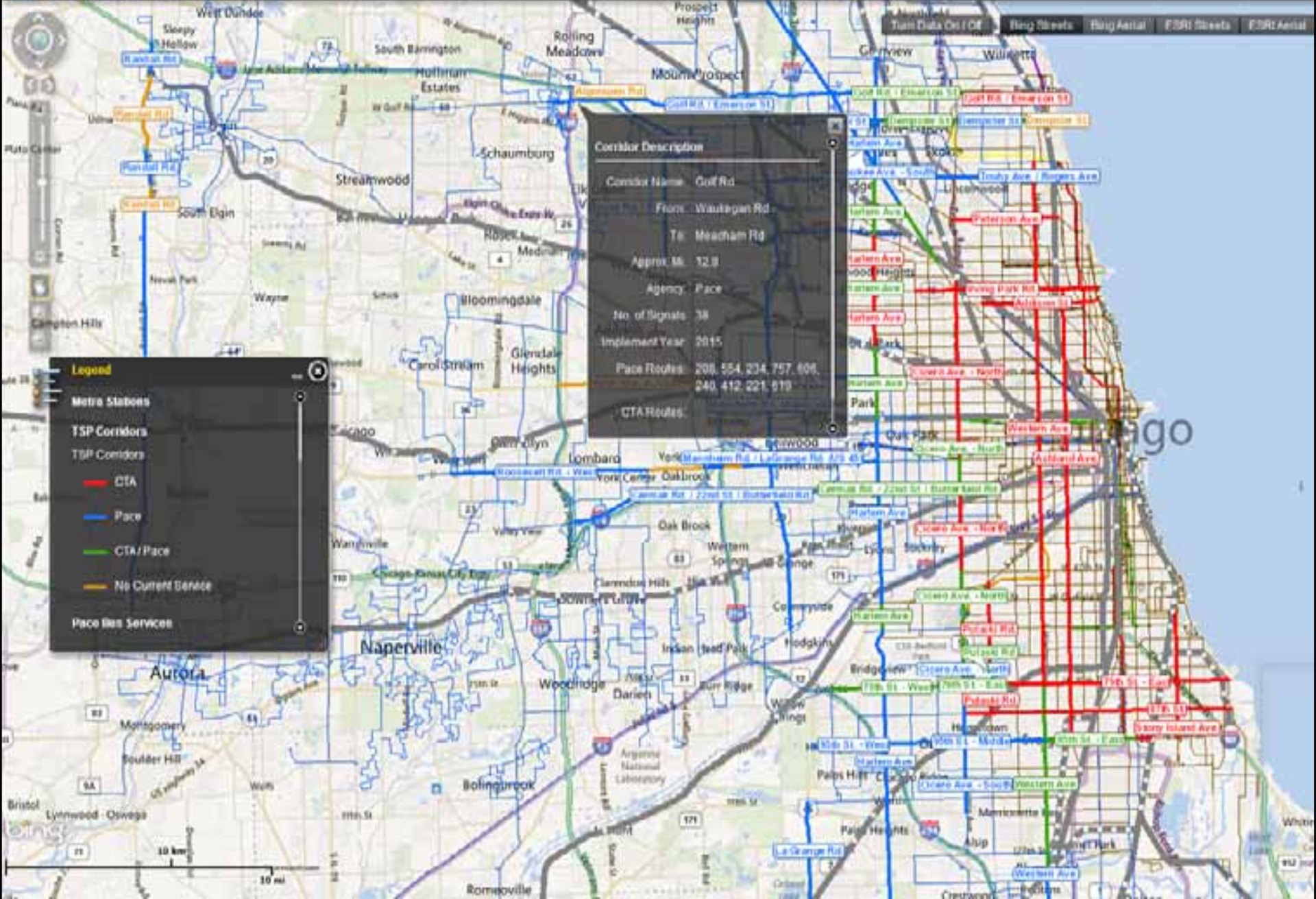
Status: In Progress

Current Activity: The final report has been completed and will be presented to the Plan Commission for adoption in early 2012. The City is moving forward with building a new station at Cermak on the Green Line, with construction s...

Street View Viewer



Proposed Transit Signal Priority Corridors of northeastern Illinois



Corridor Description

Corridor Name	Golf Rd
From	Waukegan Rd
To	Meadham Rd
Approx. Mi.	12.8
Agency	Pace
No. of Signals	38
Implement Year	2015
Pace Routes	208, 554, 234, 757, 806, 240, 412, 221, 610
CTA Routes	

Legend

- Metro Stations
- TSP Corridors
- TSP Corridors
- CTA
- Pace
- CTA/Pace
- No Current Service
- Pace Bus Services

Legend

- ADA Service Area
- ADA Service Area
- City of Chicago

550 W Algonquin Rd, Arlington Heights, IL 60005

Confidence: High

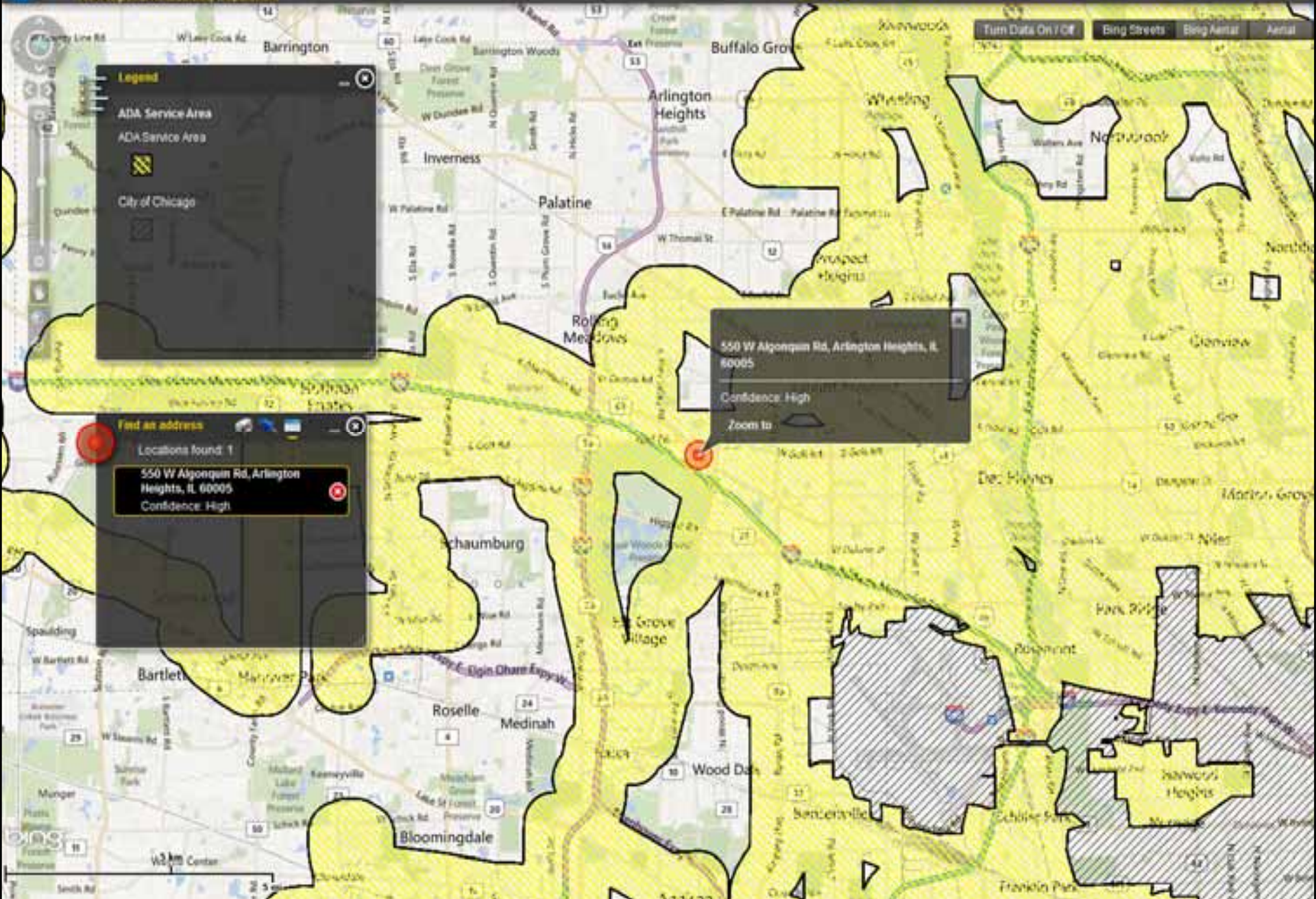
Zoom to

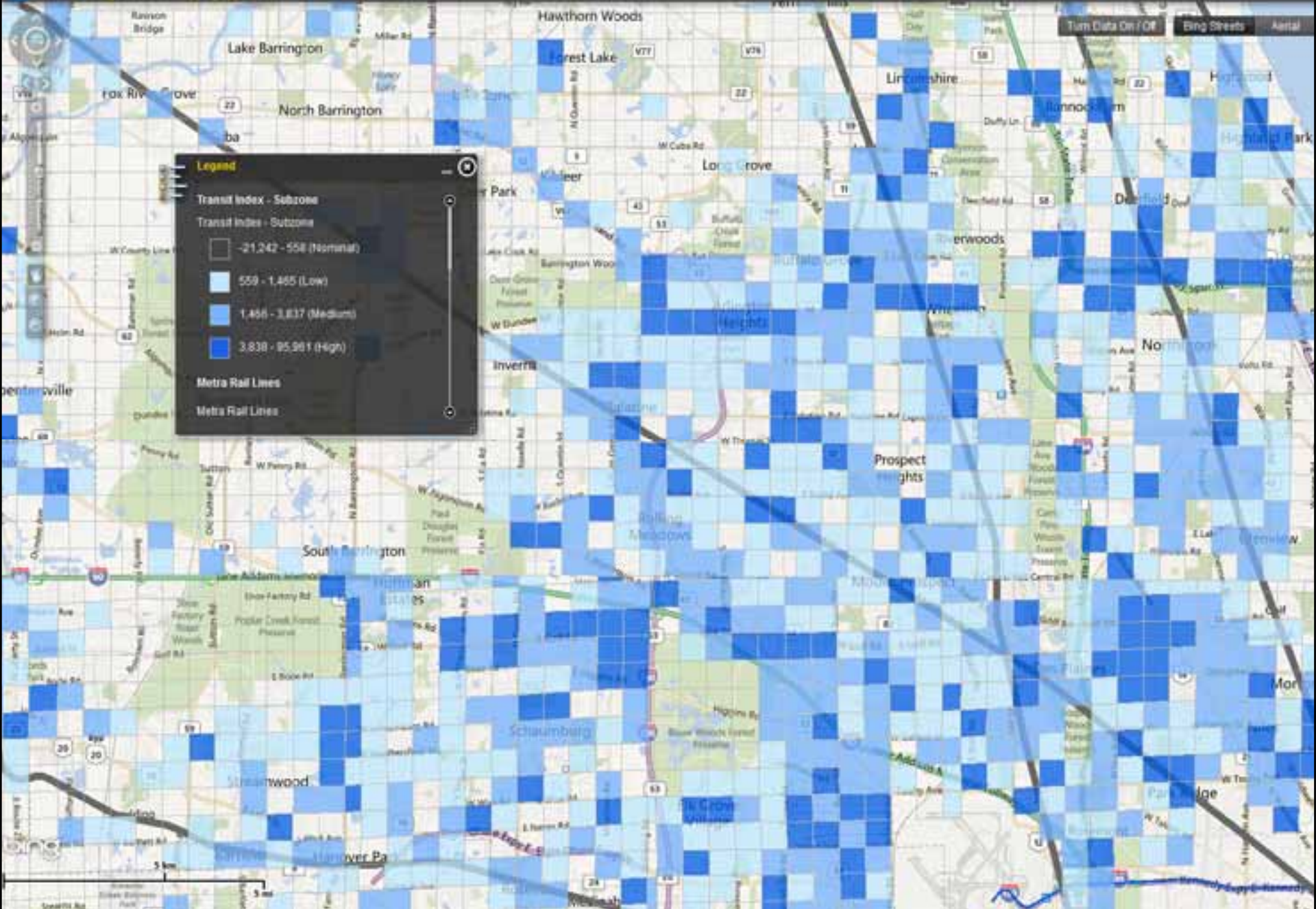
Feed an address

Locations found: 1

550 W Algonquin Rd, Arlington Heights, IL 60005

Confidence: High







Regional
Transportation
Authority