



Salt Lake County Map Book

Going from printed Map Book
to iPhone/iPad application

Humor

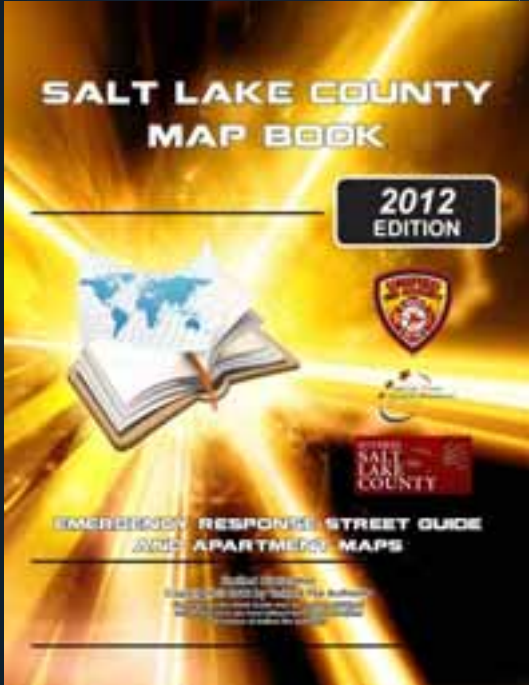


FIREFIGHTERS

They Have No Sense Of Humor Where Hydrant Parking Is Concerned

Salt Lake County Map Book

- Created for Emergency Response
- Grid based searching
- Easy to use!



10000	11000	12000	13000	14000	15000	16000	17000	18000	19000	20000	21000	22000	23000	24000	25000	26000	27000	28000	29000	30000
10000																				
11000																				
12000																				
13000																				
14000																				
15000																				
16000																				
17000																				
18000																				
19000																				
20000																				
21000																				
22000																				
23000																				
24000																				
25000																				
26000																				
27000																				
28000																				
29000																				
30000																				



Evolution of the Map Book

2002



2007

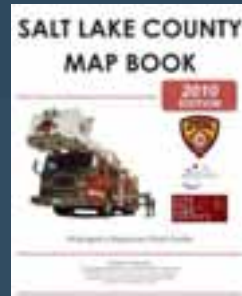


2011



iPhone & iPad App Released

2010



2012



Android App Released



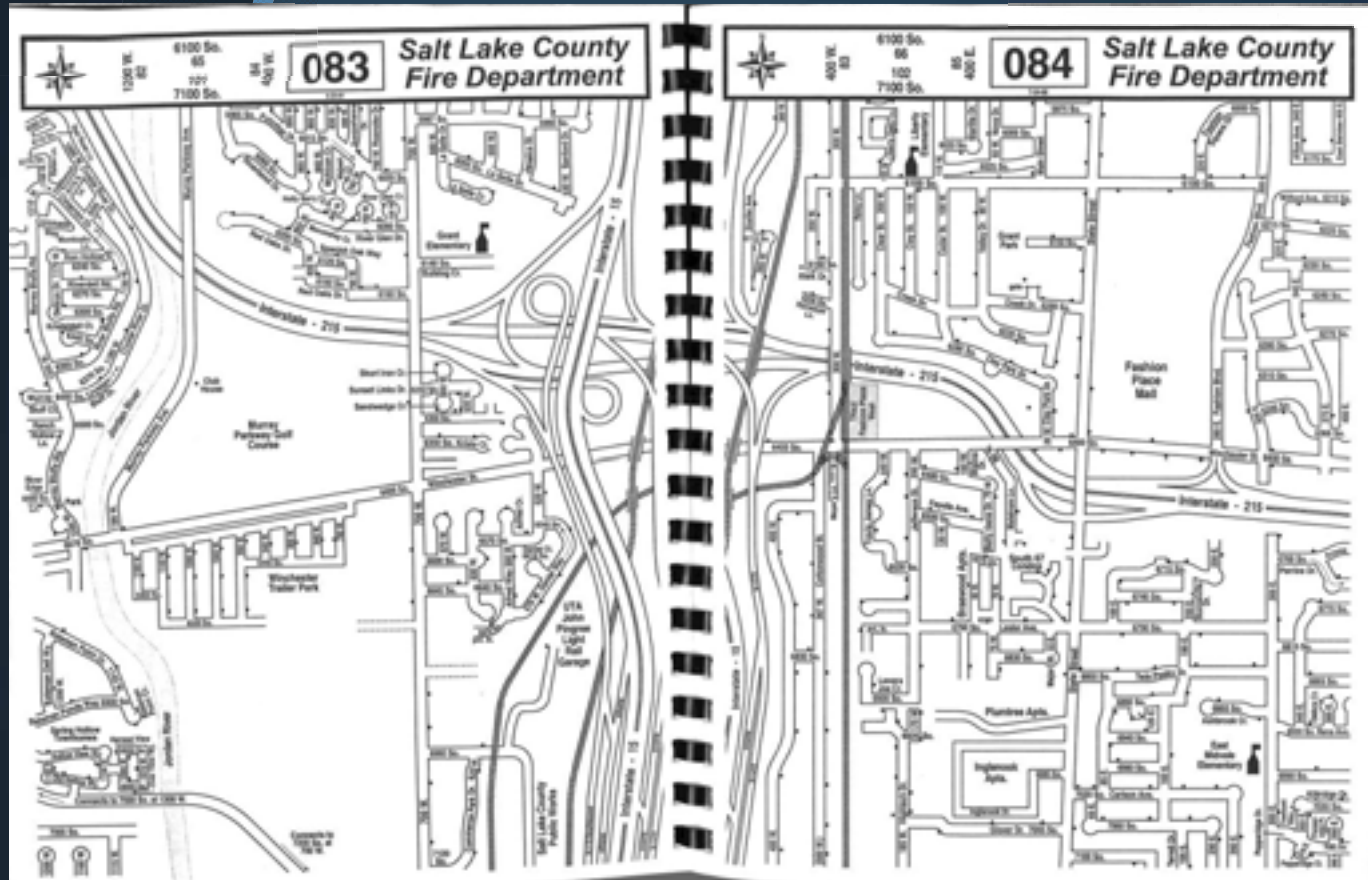
Updates to the iPhone & iPad App

Evolution of the Map Book

2002



- Created completely in Page Maker.
- Every Street driven in the County.



Evolution of the Map Book

2012



Today's Version

- Developed in ArcGIS 10 using Data Driven Pages
- 482 Pages
- Includes: Road name & Apartment indexes
- 156 Apartment Maps

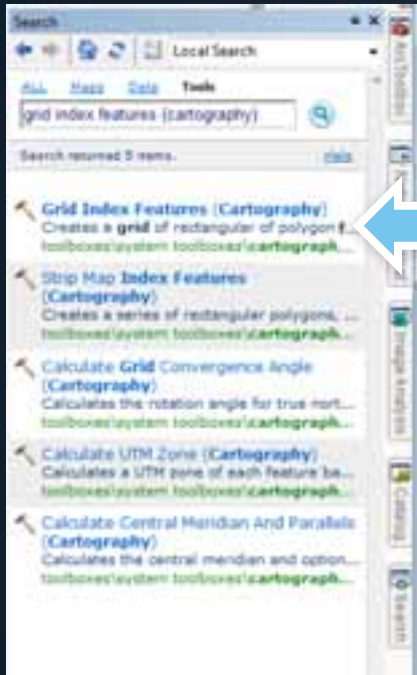


Overview

- How the Map Book was created using ArcGIS 10 w/data driven pages.
- Creating hyperlinks to specific pages within the document.
- Getting the document to work on the iPhone or iPad.
- Demo

Creating a Grid

- Start out with creating a Grid.
- Toolbox: “Grid index features”
 - Creates a grid of rectangular polygons that can be used as an index to specify pages.



Dynamic Content

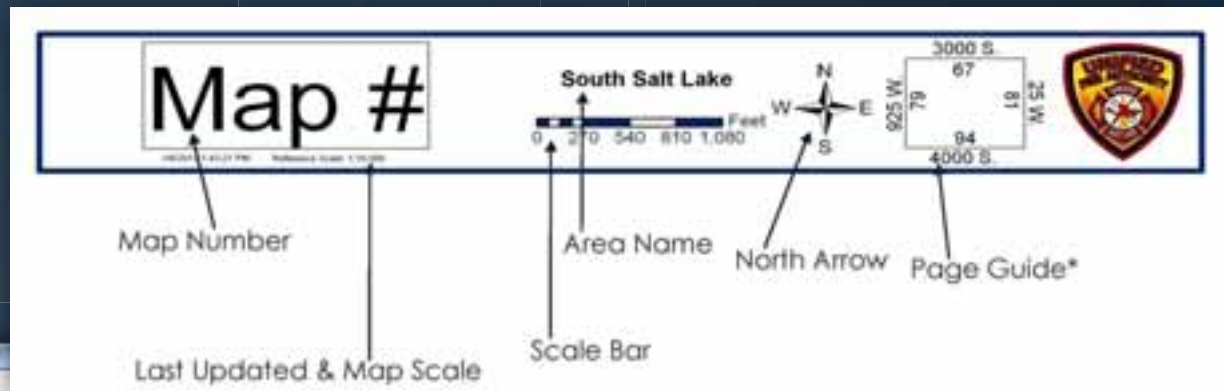

Calculate Adjacent Fields (Cartography)
 The most common use case for using this...
[toolboxes/system/toolboxes/cartograph...](#)

Example of dynamic content generated in the table.



Shape	Number	Number_W	Number_N	Number_E	Number_S	Label_W	Label_N	Label_E	Label_S	City
Polygon	101	88	108	102	112	5000 S	7200 W	4000 S	4200 W	West Valley City
Polygon	102	88	107	102	111	5000 S	4200 W	4000 S	5200 W	West Valley City
Polygon	103	88	102	104	114	5000 S	4200 W	4000 S	4200 W	Exeter
Polygon	104	81	105	105	110	5000 S	4200 W	4000 S	3100 W	Raytown
Polygon	105	82	109	108	118	5000 S	3100 W	4000 S	4000 S	Raytown
Polygon	106	93	105	107	117	5000 S	1800 W	4000 S	925 W	Raytown
Polygon	107	94	106	108	118	5000 S	825 W	4000 S	25 W	Murray
Polygon	108	96	107	108	118	5000 S	25 W	4000 S	825 S	Murray
Polygon	109	96	106	110	120	5000 S	825 E	4000 S	1625 E	Murray
Polygon	110	97	108	111	121	5000 S	1625 E	4000 S	2524 E	Holladay
Polygon	111	98	110	122	122	5000 S	2524 E	4000 S	3435 E	Holladay
Polygon	112	101	111	111	120	4000 S	7380 W	6200 W	6200 W	West Valley City
Polygon	113	102	112	114	120	4000 S	4200 W	7380 W	6200 W	West Valley City
Polygon	114	103	113	119	127	4000 S	7300 W	4200 W	4200 W	West Jordan
Polygon	115	104	114	118	128	4000 S	4200 W	7300 W	3100 W	West Jordan
Polygon	116	105	115	117	128	4000 S	3100 W	7300 W	1800 W	West Jordan

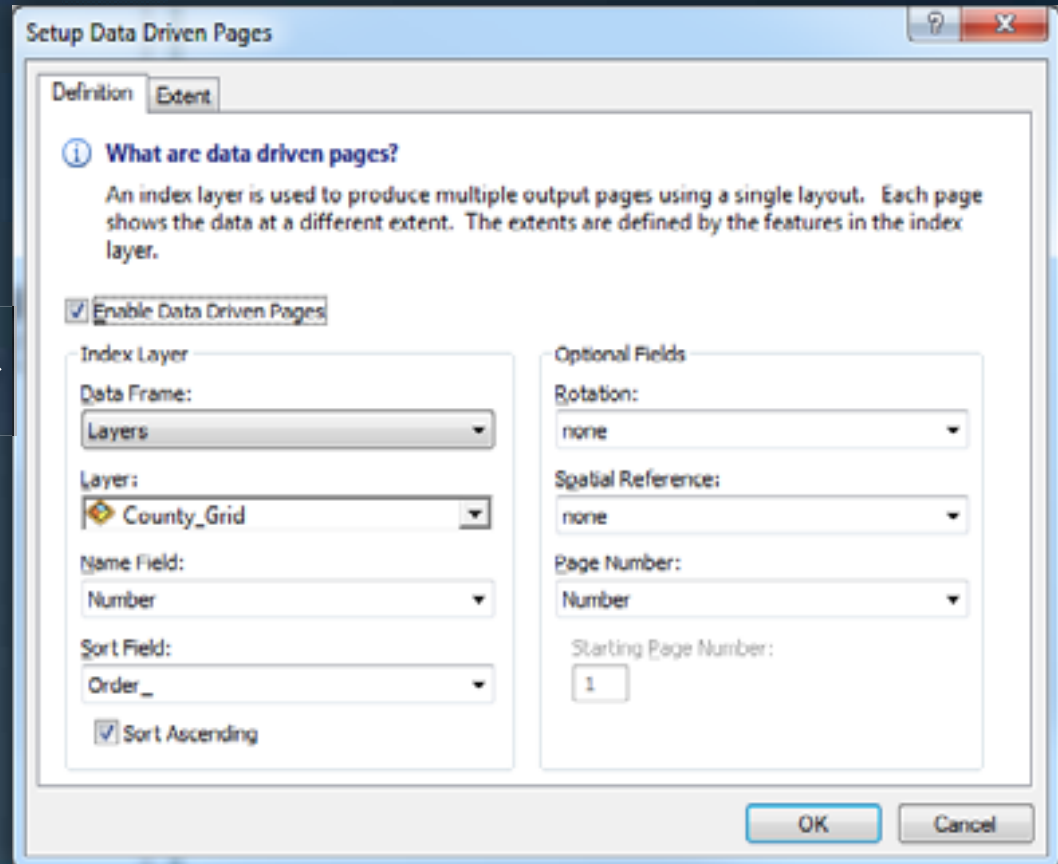
- Create dynamic content for the layout, for example page guide, map name & number.
- Toolbox: “Calculate Adjacent Fields” – Creates fields in the table that identify neighboring polygons.



Data Driven Pages

➤ Setup data driven pages tool bar based on your grid layer.

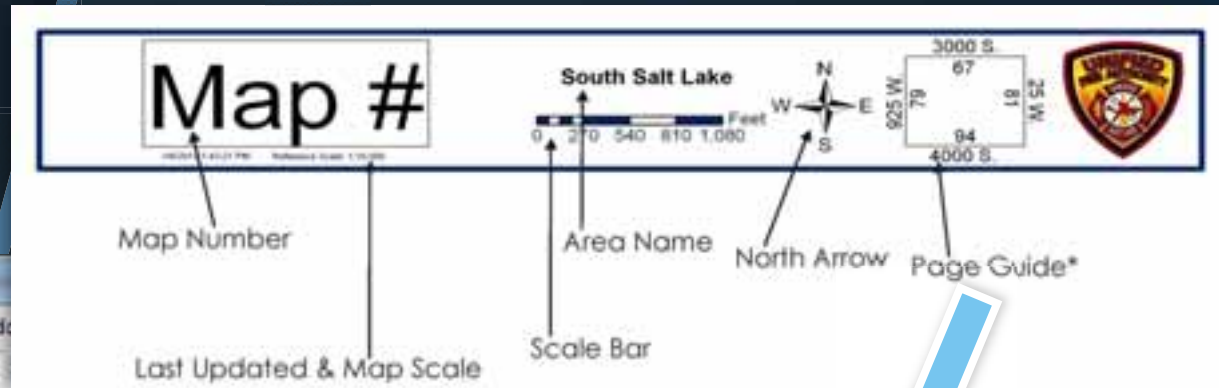
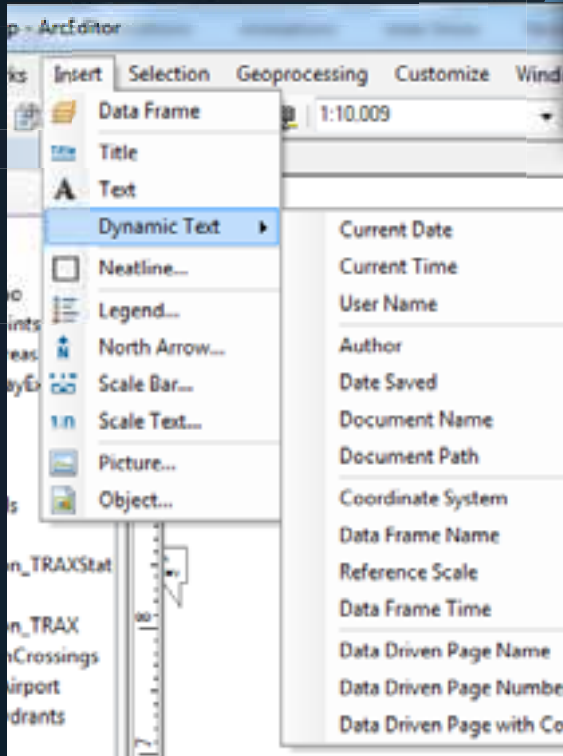
Data Driven Pages Tool bar:



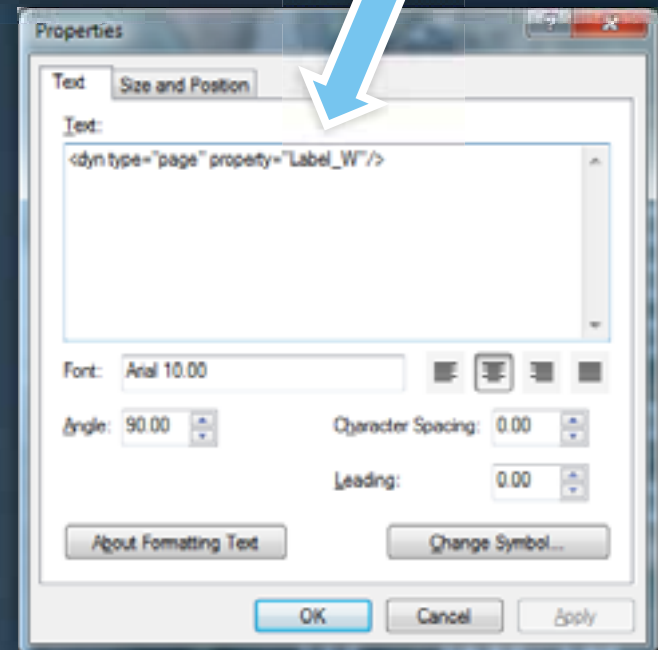
Dynamic Text

- Code that calls the data from the grid table to display the map in the layout.

Adding Dynamic Text:



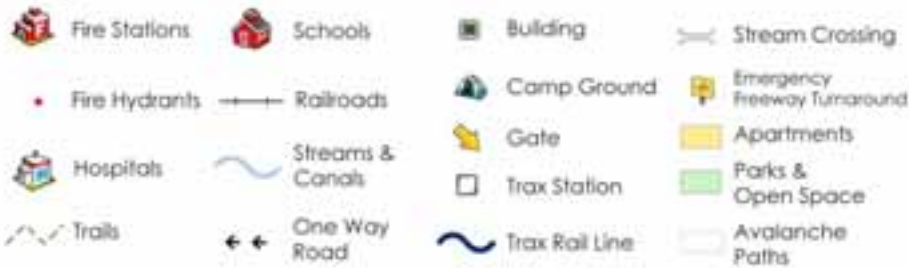
Dynamic content from table



Layers

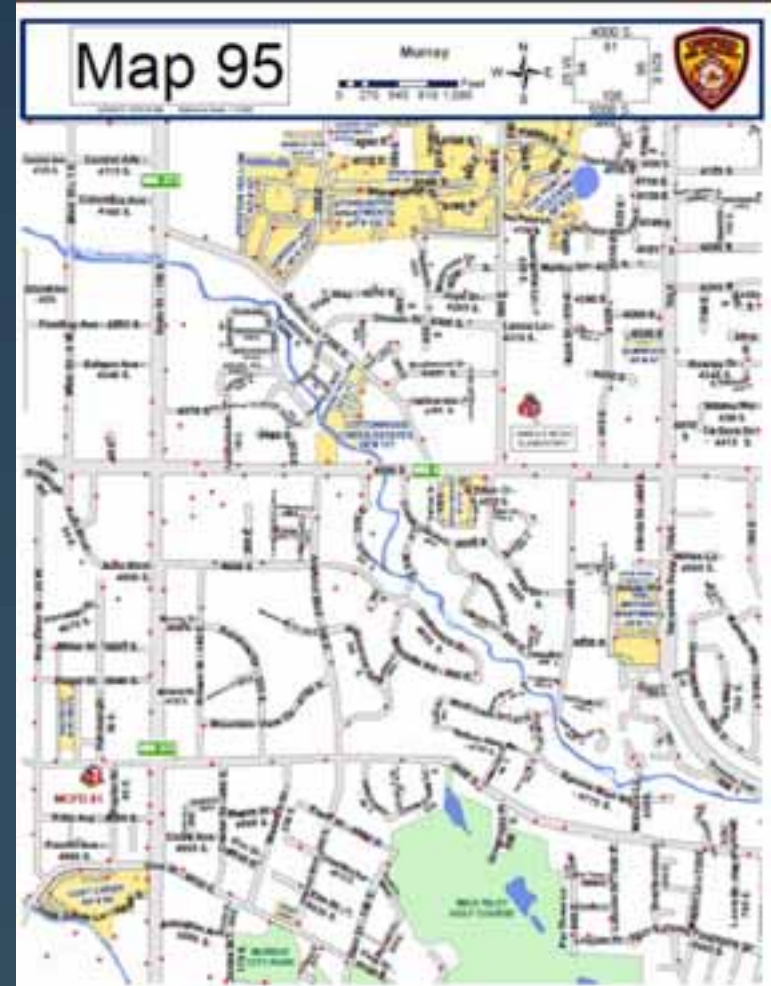
➤ Symbology , Layers & Labeling

Legend



Labeling includes:
Road Name &
Coordinate

For Example:
Redwood Rd –
1700 W.



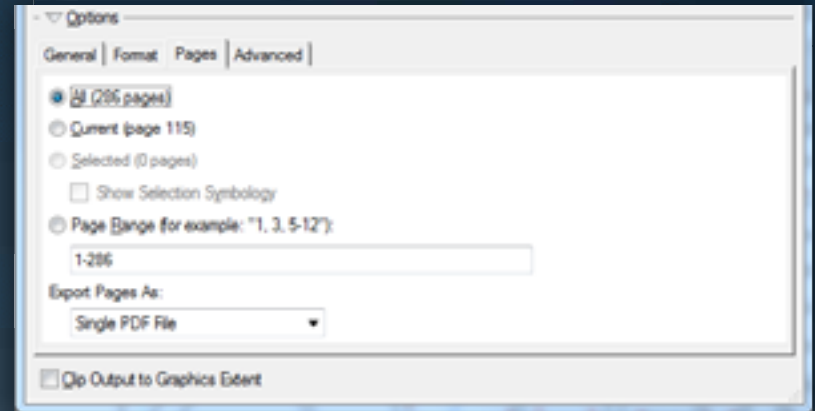
Compiling the Book

Total Pages: 482
File Size: 278 MB

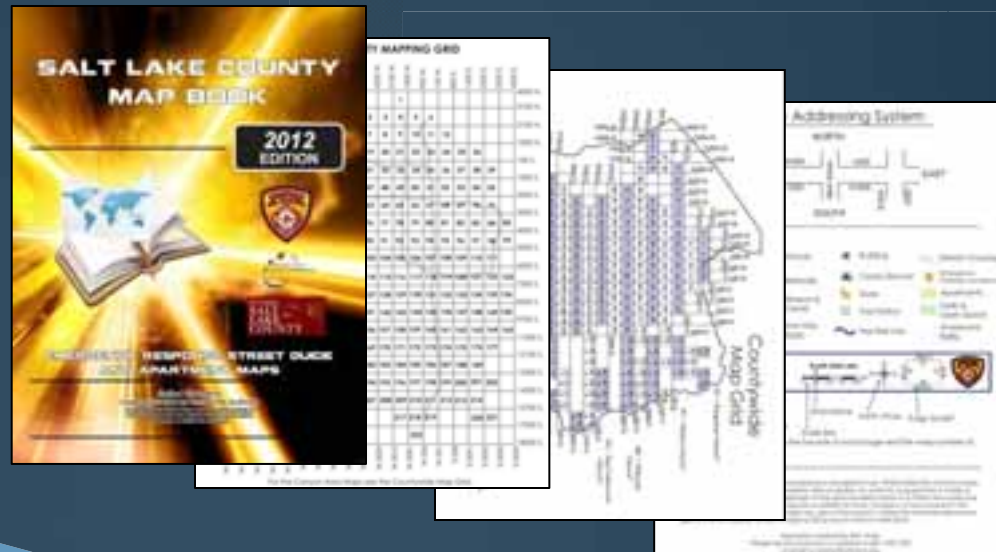
Programs used:

ArcGIS 10
Adobe Acrobat
Indesign
Photoshop

➤ Export Pages as PDF



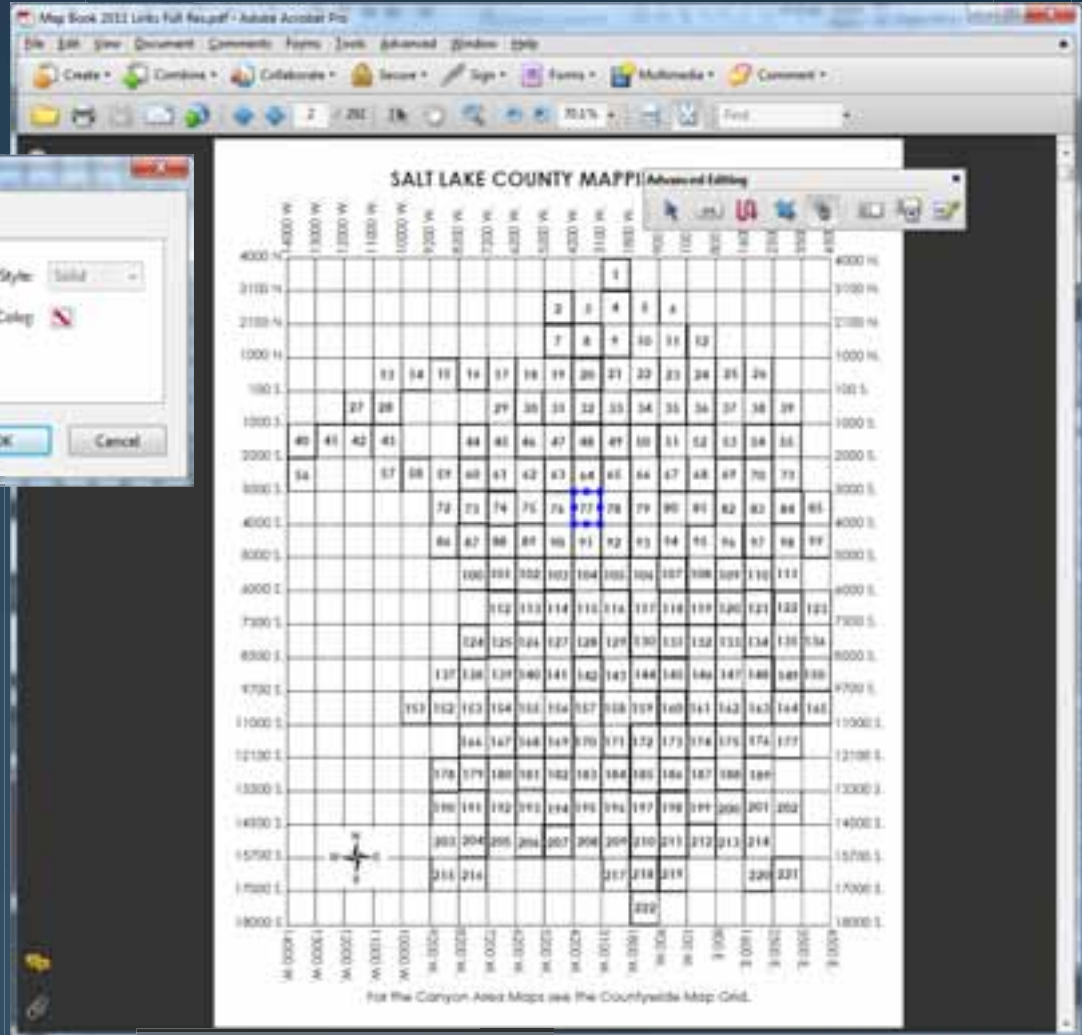
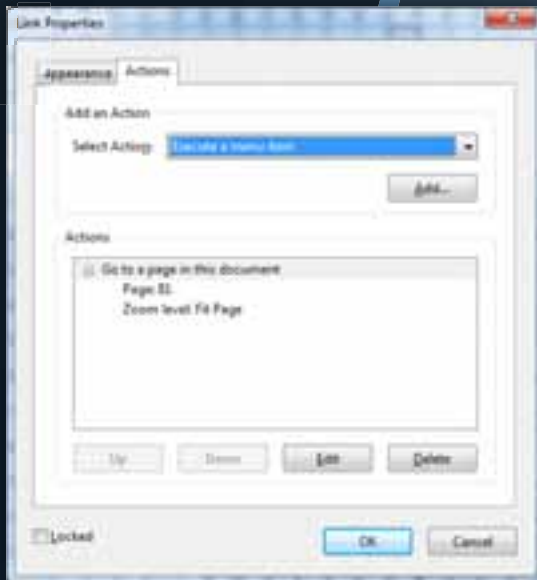
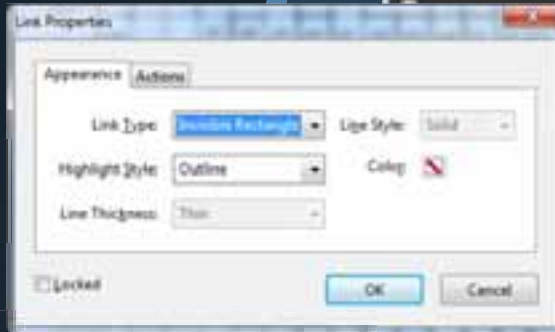
➤ Combine cover page etc. using Adobe Acrobat Pro



Adding Hyperlinks

➤ Adding links to the Grid to jump to the individual map pages. Using the Advanced Editing > Link Tool

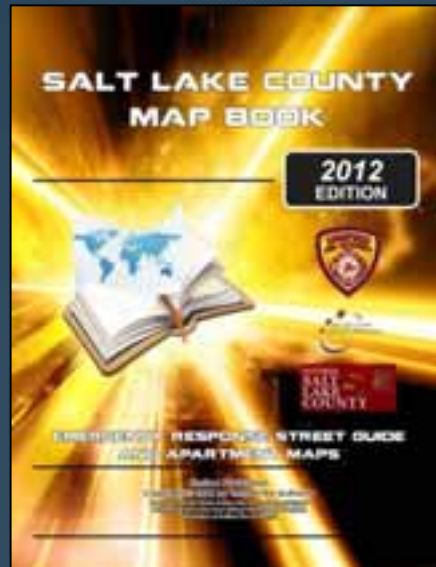
Add link, make the link type invisible rectangle. Under the action tab execute go to page #



Total links: 1,772

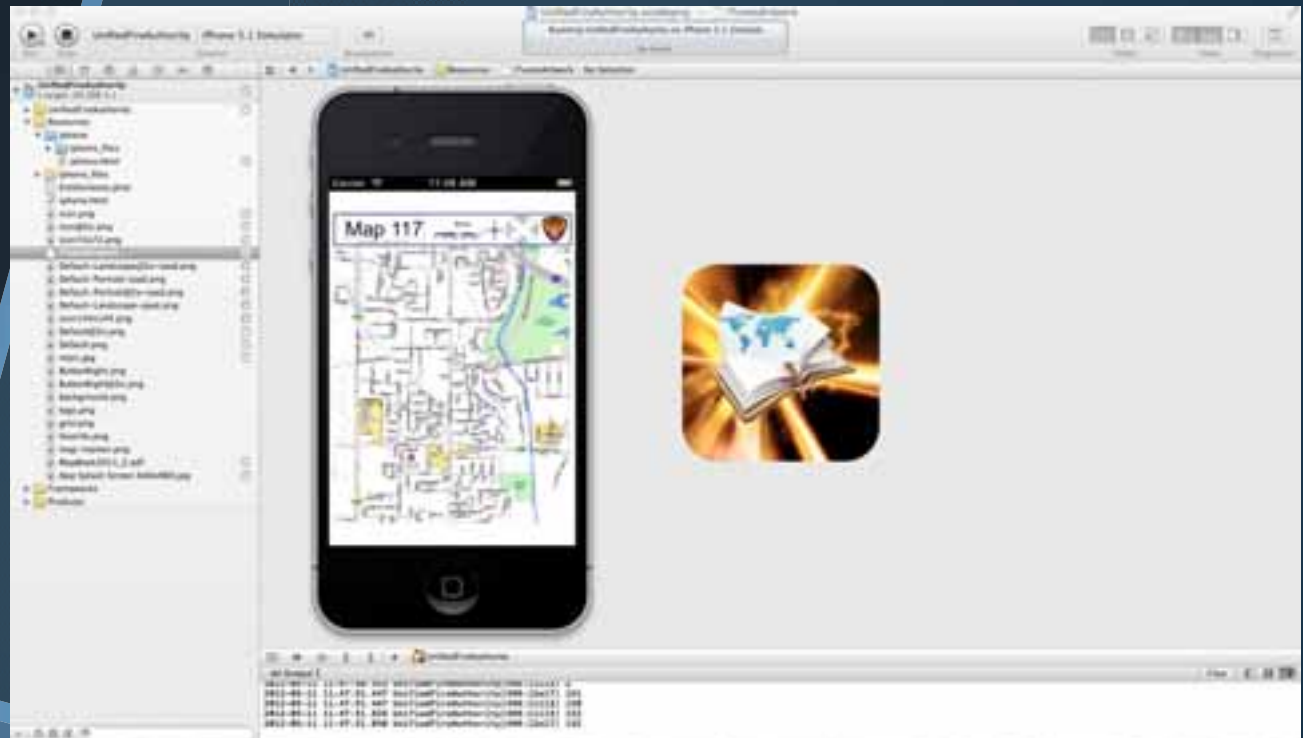
iPhone/iPad App

- Importing your PDF to run on an iPhone or iPad
- Use an existing App like iBooks or Goodreader. (These apps recognize all the internal hyperlinks)
- Sync with iTunes or up load via WIFI



App Developer

- Apple Developer
 - Requires a Mac, OS 10.3 or greater
 - Cost \$99 per year
 - Learn Xcode/Objective C
- Or hire a Developer
 - Pixio – www.pixiosoftware.com



Video



<http://youtu.be/GtOQM7V9tgM>

Now Available

- Salt Lake County Map Book App is available on the App Store.
- 300+ Copies Downloaded so far.
- <http://www.slcoem.org/mobileapp.html>



Demo





Questions

Contact Info:

Ben Teran

bteran@ufa-slco.org

801-743-7129