

Kent County GIS

Build It, and They Will Come...



Kent County Information Technology
320 Ottawa Ave NW
Grand Rapids, MI 49503



Kent County, Michigan



County Population: 608,000

County Seat: Grand Rapids

The Mitten State



A quick overview...

- ❑ A cornerstone member of the REGIS project in the mid-90's, formed a more County-centralized program in 2004-2005
- ❑ County's GIS Team now consists of 4 full time employees
 - GIS Team Lead, 2 GIS Analysts, 1 Programmer
- ❑ Support numerous County departments with over 75 ArcGIS installs and 200+ Intranet GIS users, and growing number of remote Township/City users
- ❑ ArcGIS, Intranet/Internet ArcServer applications



Some of our “Power Users”

- ❑ Sheriffs Department
- ❑ Friend of the Court
- ❑ County Health Department
- ❑ County Drain Commission
- ❑ Bureau of Equalization
- ❑ 911 Dispatch (KCDA)
- ❑ Prosecutor’s Office
- ❑ County Parks Department
- ❑ Facilities Management
- ❑ Administrator’s Office
- ❑ County Circuit/District Courts
- ❑ Community Development Office
- ❑ Department of Aeronautics



Kent County Sheriffs Department & Prosecutors Office

❑ **Emergency Management**

- GIS Team is part of County's Emergency Response group
- Emergency Management Drills and Scenarios

❑ **Detectives/Road Patrol/Community Policing/SSU**

- Sex Offender vs. Schools mapping
- Major Case Detectives mapping for court trials and crime scenes
- Plotting coordinates of victim/suspect cell phone calls





County Prosecutors & Major Case Detectives



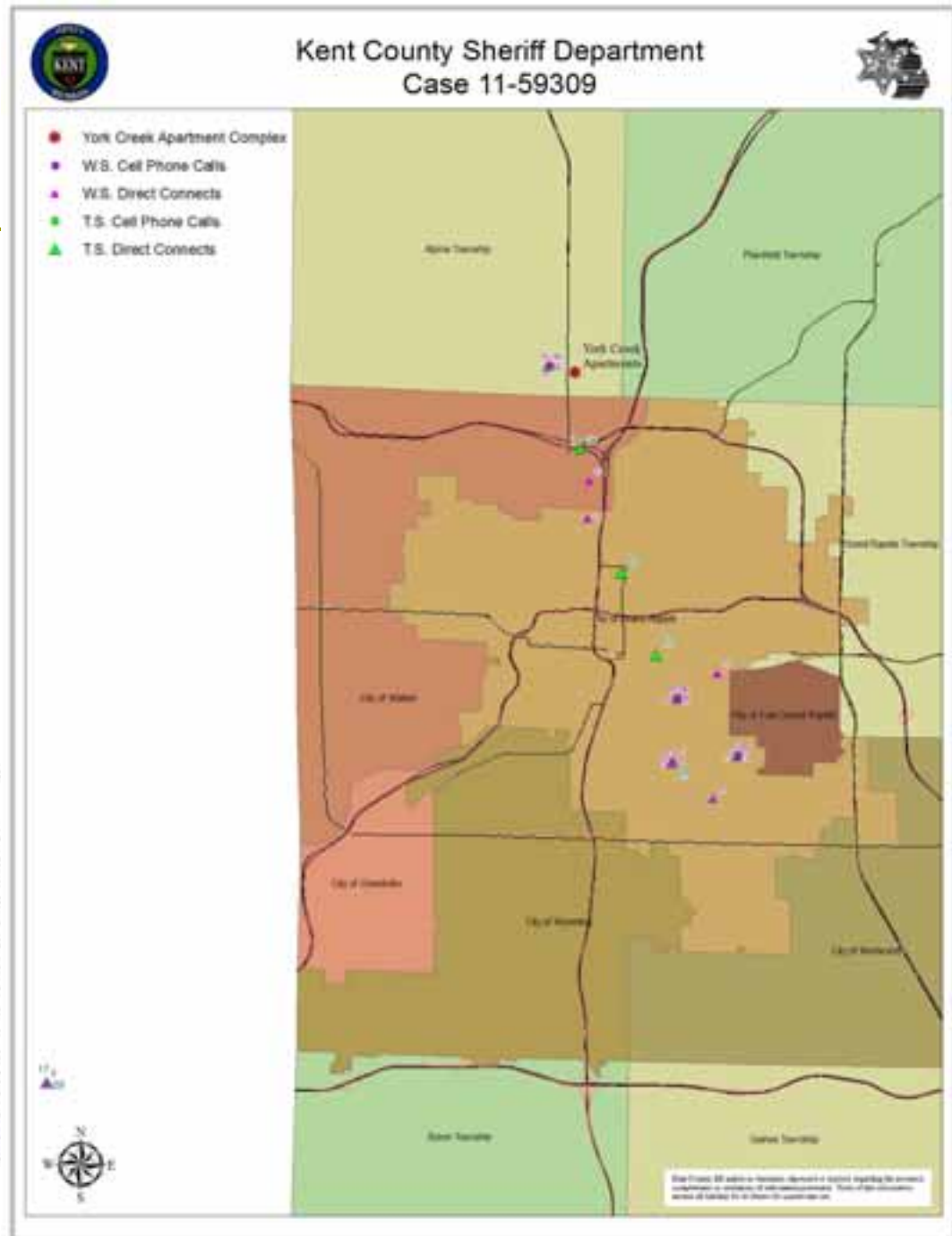


Major Case Detectives

-Cell Phone Coordinates of Suspects

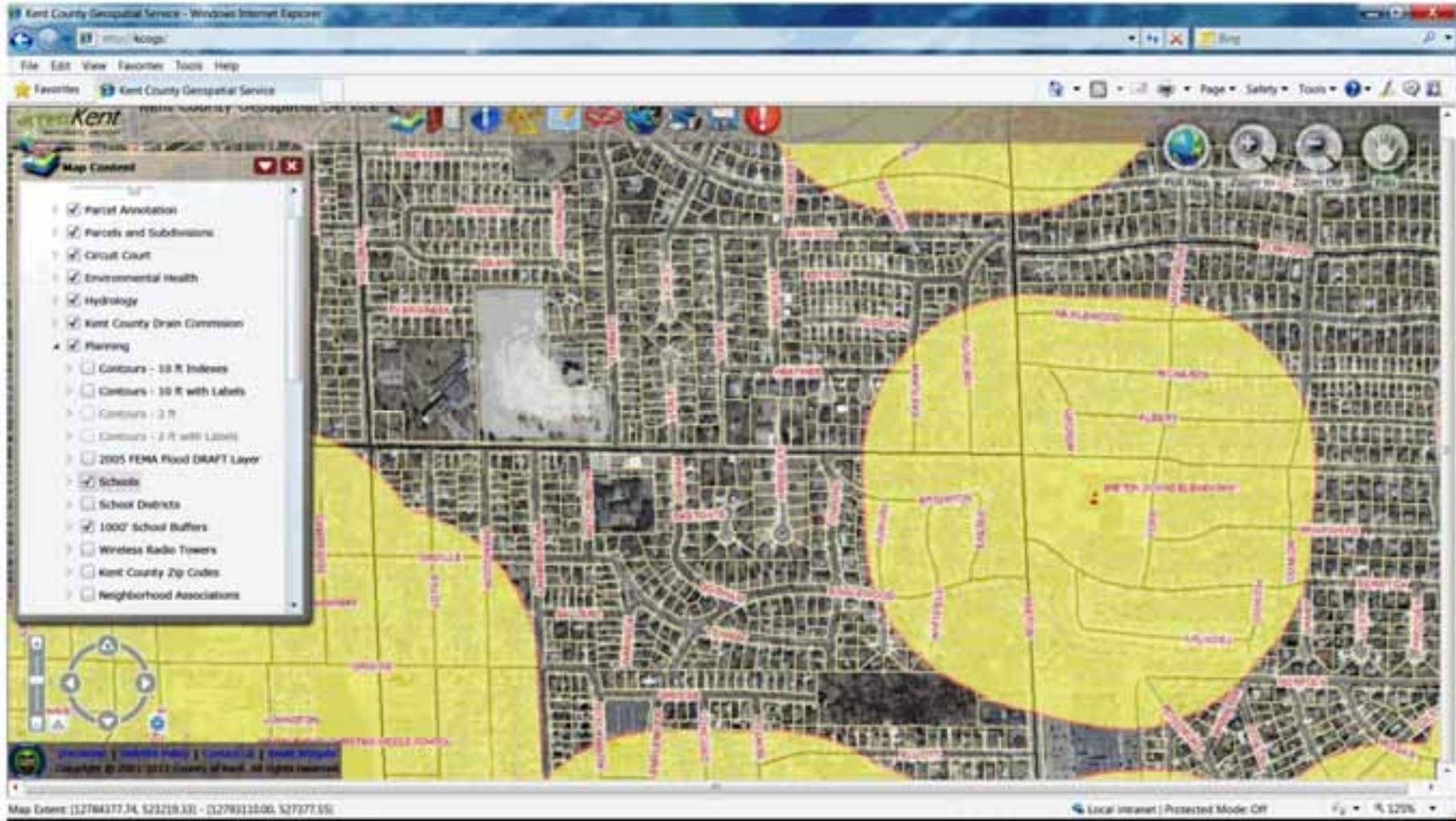
Terrance Simons Direct Connect Log

Call Number	Date	Time	Duration (sec)	X	Y	Direct Connect Number
16	19-Sep-08	4:11:23 PM	7.9	-85.626500	42.935759	131*577*9239
17	19-Sep-08	4:11:38 PM	70	-85.870743	42.846803	131*581*5342
18	19-Sep-08	4:28:52 PM	34.7	-85.669103	42.982846	131*576*6588
19	19-Sep-08	4:40:13 PM	27.1	-85.695754	43.037177	131*581*5342
20	19-Sep-08	4:42:41 PM	53.7	-85.695754	43.037177	131*581*5342
21	19-Sep-08	4:43:43 PM	39.9	-85.695754	43.037177	131*581*5342
22	19-Sep-08	4:45:15 PM	23	-85.695754	43.037177	131*581*5342
23	19-Sep-08	4:48:00 PM	28.6	-85.695754	43.037177	131*575*4862
24	19-Sep-08	4:49:05 PM	44.7	-85.695754	43.037177	131*581*5342
25	19-Sep-08	4:50:12 PM	98.4	-85.695754	43.037177	131*581*5342
26	19-Sep-08	4:51:59 PM	18.9	-85.695754	43.037177	131*581*5342
27	19-Sep-08	5:22:13 PM	14	-85.656253	42.961779	131*577*3848
28	19-Sep-08	5:35:51 PM	43.0	-85.649685	42.933818	131*577*3795
29	19-Sep-08	5:55:14 PM	7.4	-85.870743	42.846803	131*577*9239
30	19-Sep-08	6:36:17 PM	25.2	-85.648314	42.950575	131*581*3095





Sex Offender 1000' Buffer Mapping Tool





Bureau of Equalization (County Appraiser)

❑ **Property Description and Mapping**

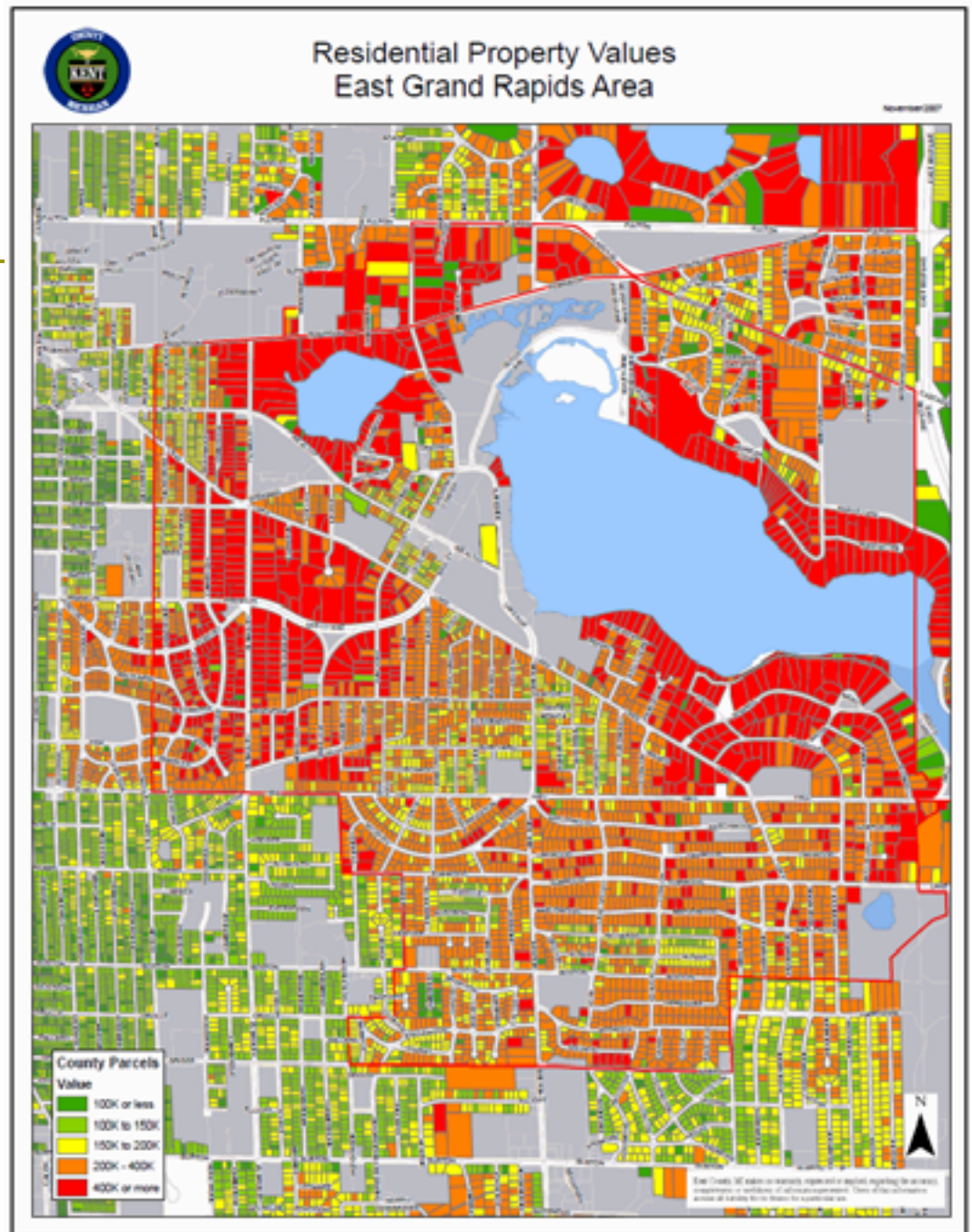
- Edit and maintain all parcel-related data for County/REGIS/City of GR
- Provide maps to public and answer property related questions
- County Section Mapbook creation

❑ **County Assessors**

- Maintain BS&A County database
- Sales Mapping
- Assessed Value Mapping
- Foreclosure Mapping
- Use Pictometry and ArcGIS for Appraisals



Property Value Mapping





County Sales Web Application

<http://gis.kentcountymi.gov/public/kcsalesviewerweb/>

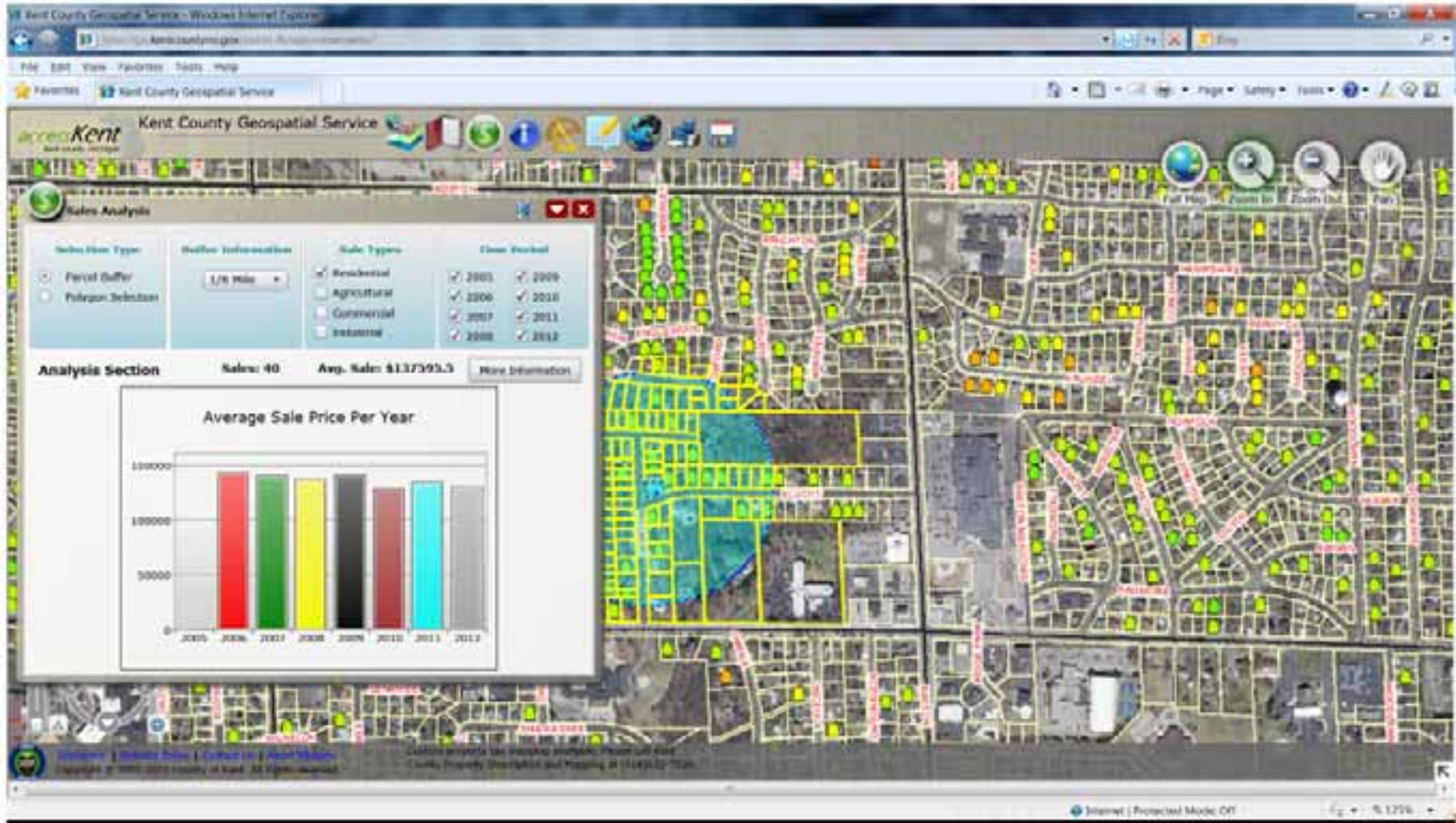
The screenshot displays the Kent County Geospatial Service web application. The interface includes a map of a residential area with several properties highlighted. One property is highlighted with a red border. A popup window titled "Identify" is open, displaying the following information:

Parcels (1)	
FWN:	41180447001
1st Owner Name:	KOOL, MATTHEW R
2nd Owner Name:	
Property Address:	2003 ELLIOTT ST SE
City:	GRAND RAPIDS
Zip Code:	MI49506
SEV:	75200
Taxable:	75200
PROPERTYCLASS:	401
Sale Price:	143000
Sale Date:	4/8/2011 12:00:00 AM
Terms of Sale:	R - ARMS LENGTH

The application also features a "Map Control" panel on the left with various filters and a "Full Map" control on the right. The browser address bar shows the URL: <http://gis.kentcountymi.gov/public/kcsalesviewerweb/>.



<http://gis.kentcountymi.gov/public/kcsalesviewerweb/>





Oblique Imagery Pictometry Integration



**“We can see over the fence,
and don’t have to worry
about the attack dog...”**

A screenshot of a web browser displaying the "Kent County Pictometry" application. The browser address bar shows a URL with a long alphanumeric string. The application interface includes a toolbar with various icons for navigation and tool selection. The main display area shows an oblique aerial photograph of a residential property with a fence and trees. At the bottom of the interface, there are controls for "View From" (North, South, East, West), "Zoom Level: 220 %", and "Current Tool: None". A copyright notice for Pictometry International Corp. is visible in the bottom right corner of the image area.



Oblique Imagery Pictometry Integration





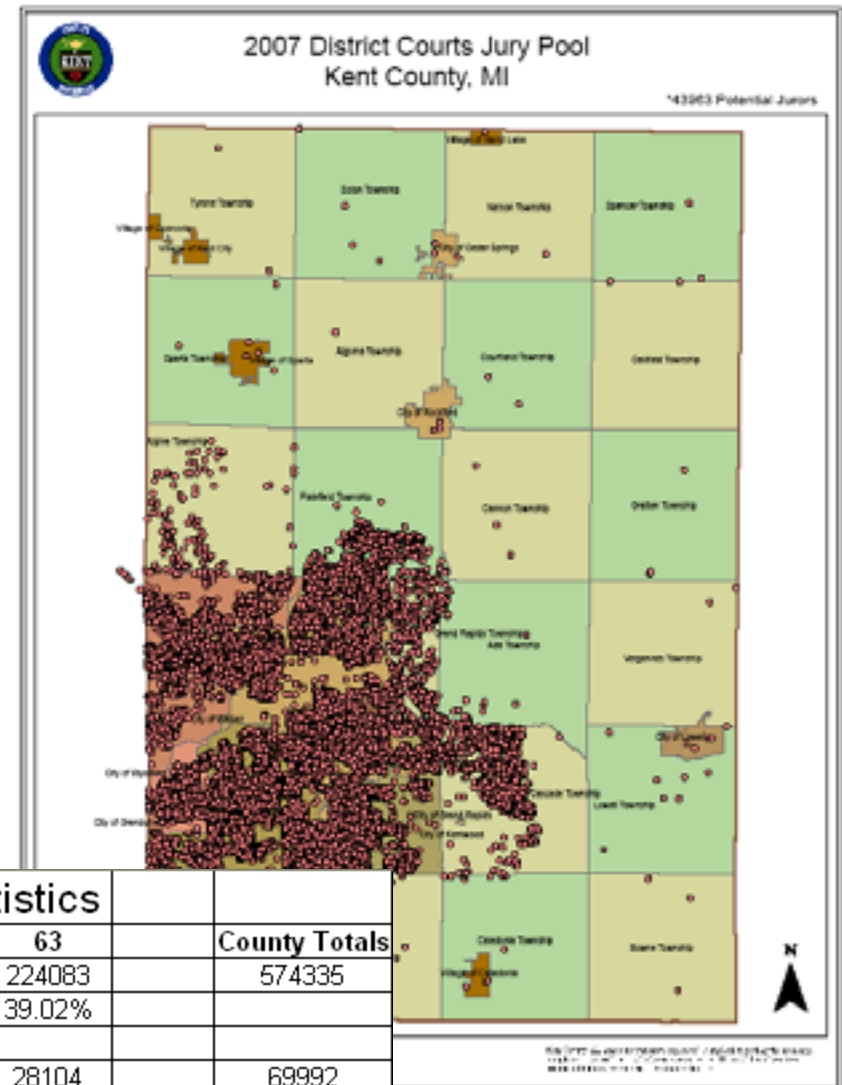
Kent County Circuit Court

- ❑ Circuit Court annual jury pool geocoding
- ❑ Community Service worksites mapping
- ❑ Friend of the Court Warrant Mapping





District Court Jury Pool Mapping/Statistics



Kent County District Courts - 2007 Jury Pool Statistics						
	59	61	62A	62B	63	County Totals
Total County Population	38099	197582	69356	45215	224083	574335
% of County Total Population	6.63%	34.40%	12.08%	7.87%	39.02%	
Total Jurors	4599	22587	8644	6058	28104	69992
% of County Juror Pool Total	6.57%	32.27%	12.35%	8.66%	40.15%	



Circuit Court Community Service Worksites

The screenshot displays the Kent County Geospatial Service web application. The browser address bar shows the URL <http://info://map.kcgov/arcgis/rest/services/>. The application interface includes a toolbar with icons for Full Map, Zoom In, Zoom Out, and Pan. A 'Map Content' panel on the left lists various layers, with 'Circuit Court' and 'Comm Service Work Sites' selected. The map shows a yellow-shaded area representing the Circuit Court jurisdiction, with a red line indicating a road. A blue location pin is placed on the map, and an 'Identity' popup window is open, displaying the following information:

Back to search	Export results to CSV file	Clear results
▼ Comm Service Work Sites (1)		
219		
OBJECTID:	319	
Agency ID:	2010	
Agency:	SAINTE THOMAS CATHOLIC CHURCH	
Contact:	JOHN DOE	
Address:	430 SOUTH MAIN	
City:	WALKER	
Zip:	49346	
Phone:	2607027016	
Days of Operation:	M Tu W Th F	

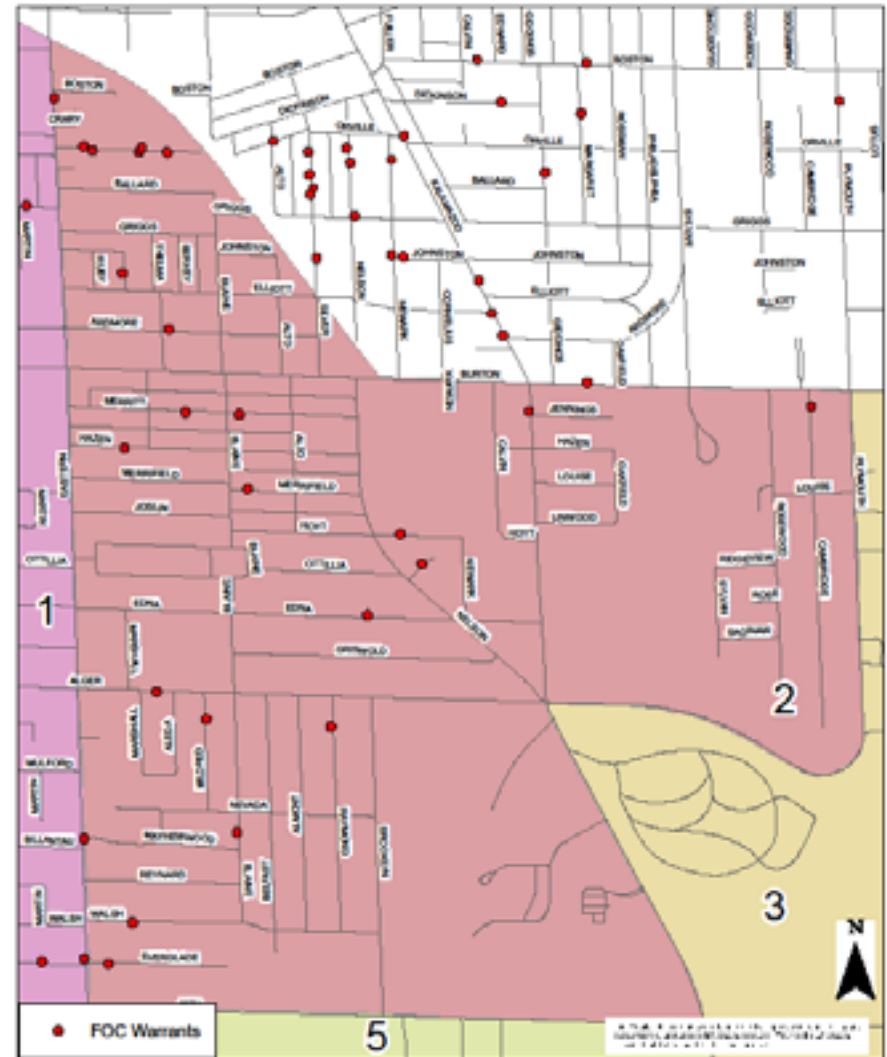


Each officer receives a map of their specific patrol area, with outstanding FOC warrants plotted as points



City of Grand Rapids FOC Warrants Beat East 2

6/8/2007



City of Rockford FOC Bench Warrants

10/22/2006





Along with the map, the officer receives a spreadsheet that lists each offender within their patrol area (Name, DOB, Address, Warrant Date, Bond Amount)

FOC Bench Warrants City of Rockford October 2011

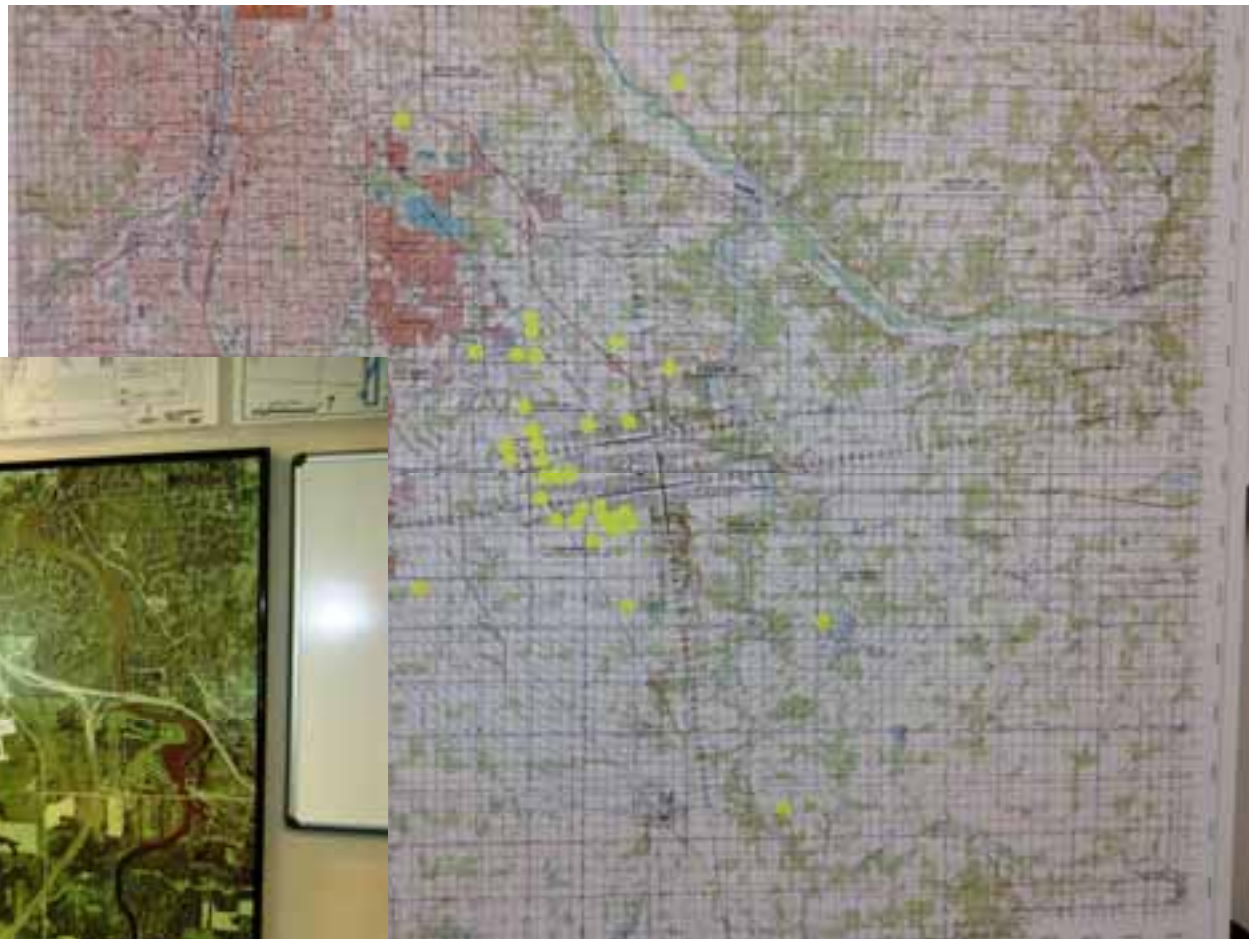
NAME	DOB	ADDRESS	WARRANT DATE	BOND AMOUNT
GEMLY,STEVE	3/23/1972	209 HELEN DR	9/22/2004	\$2,959.00
MALLE,JACK	12/25/1969	240 EAST DIVISION	9/27/2006	\$3,435.00
NEALON,ERIC	6/4/1980	9179 COURTLAND DR NE	9/12/2006	\$4,986.00
PORTERVILLE,DONALD	3/28/1965	238 GLENDALE DR NE	4/19/2006	\$711.00
POWE,TIMOTHY	6/10/1966	132 CHILDSDALE APT 206	11/30/2005	\$24,448.00
THOMS,LAURENCE	9/4/1971	638 HILLVIEW PL	6/28/2006	\$2,776.00



Kent County Department of Aeronautics Gerald R. Ford International Airport **FAA Part 77 – Tower Tracking**

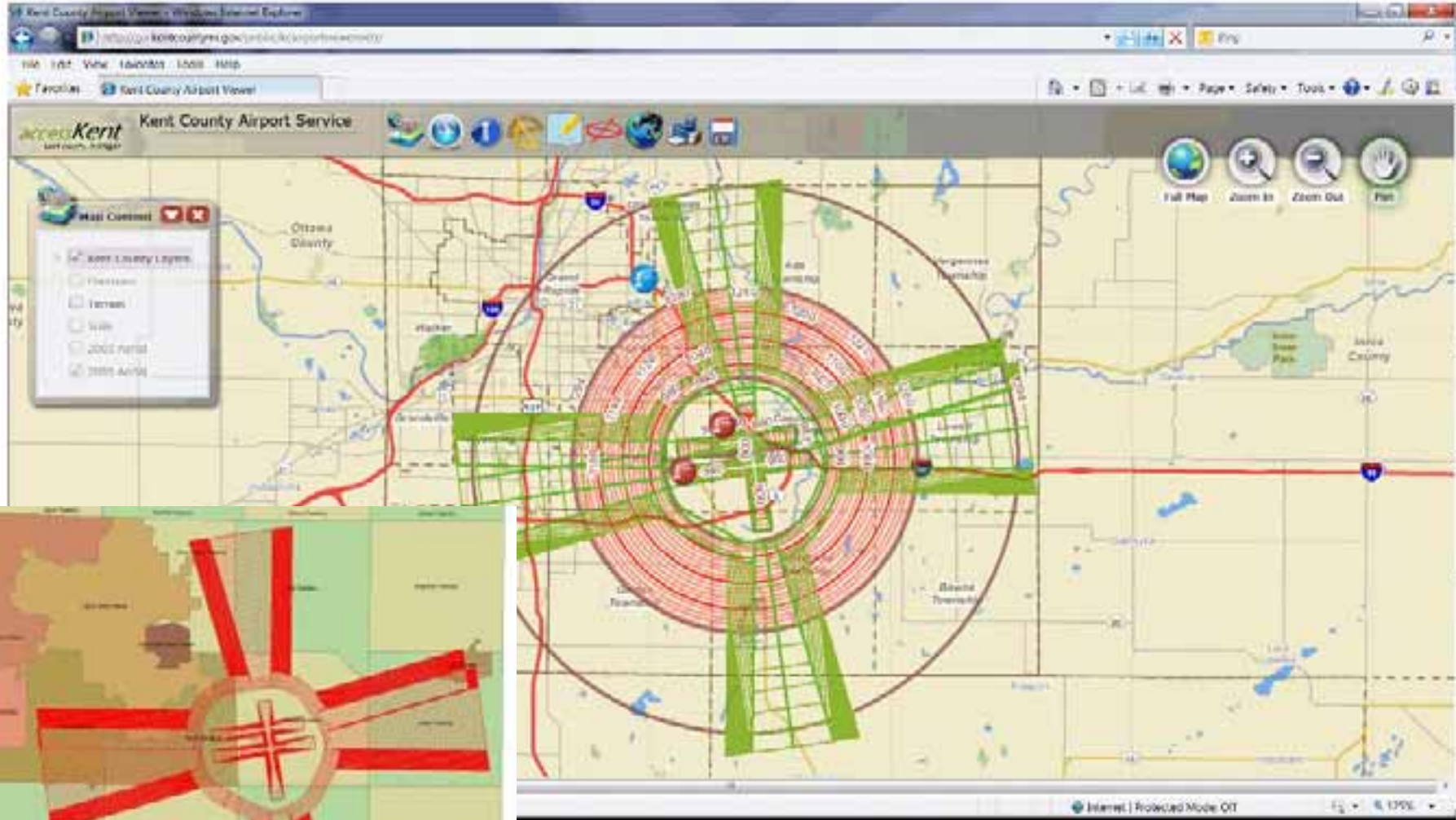


**The “old” way....
Post-Its on wall maps**





Kent County Department of Aeronautics Gerald R. Ford International Airport **FAA Part 77 – Tower Tracking**





Kent County Department of Aeronautics Gerald R. Ford International Airport **FAA Part 77 – Tower Tracking**



Crane LTR
Latitude: 42.82.25
Longitude: 85.34.56
Ground Elev. (R): 739
Elevation ARA (R): 185
Elevation AMSL (R): 923
FAA Study #: NA
Airport Zoning #: 23-13-2012
Submission Date: 6/11/2012 12:00:00 AM
Start Date/Time: 6/18/2012 8:00:00 AM
End Date/Time: 6/16/2012 5:00:00 PM
Contact Name: Jeff Arjoo
Contact Number: 616-735-1700 331-750-8415
Tagging: True
Lighting: True
Comments: Coordination with FAA ATCT will be coordinated. Jim Murslow or Kevin 373-1902



A Few of our GIS Community Partners





Brodey Hill, GISP

Kent County Dept of Information Technology
320 Ottawa Ave NW
Grand Rapids, MI 49503

Email: brodey.hill@kentcountymi.gov

Phone: 616-632-6558

<http://www.accesskent.com/YourGovernment/Departments/GIS/>