

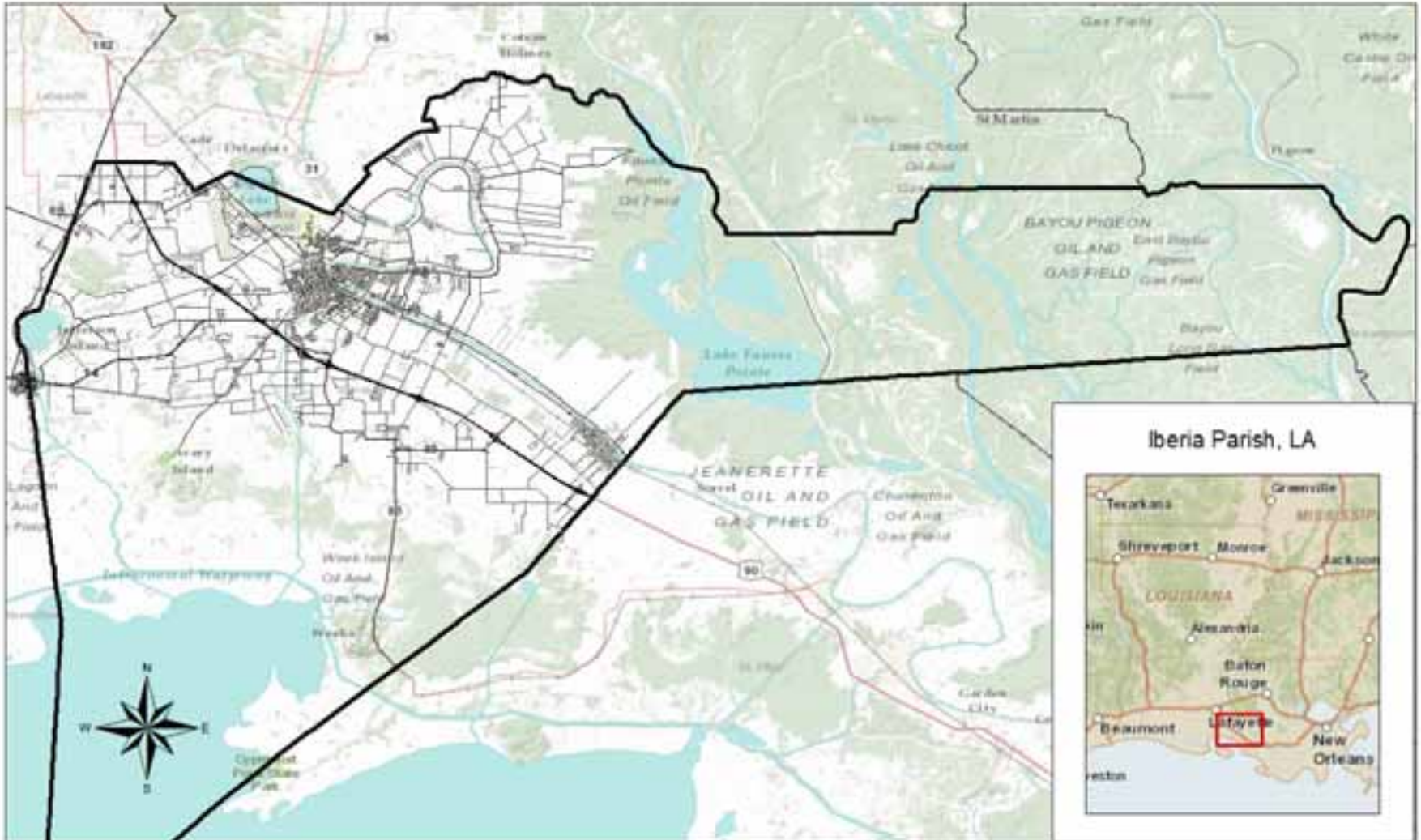


GIS from Scratch in Iberia Parish Government

July 25, 2012



Where is it?



What's Going On There?



▶ Oilfield



▶ Tabasco



▶ Sugar Cane



▶ Seafood



How Did the GIS Idea Start?



September 2007

- ▶ Meeting with city and parish stakeholders to discuss GIS needs assessment and planning

Early 2008

- ▶ City turns Enterprise GIS effort to Iberia Parish Government

Early 2009

- ▶ Needs Assessment Questionnaires sent

June 2009

- ▶ City of New Iberia and IPG officials visit Lincoln Parish GIS Department

February 2010

- ▶ GIS Manager hired at IPG
- ▶ 2008 aerial photography in place

April 2010

- ▶ Implementation Plan for Enterprise GIS completed



Entities Served by GIS



Parish Government

- ▶ Homeland Security
- ▶ Permits, Planning & Zoning
- ▶ Public Works
- ▶ Sewerage District
- ▶ Finance

Other IGA Participants

- ▶ Tax Assessor
- ▶ City of New Iberia
- ▶ Iberia Economic Development Authority
- ▶ Mosquito Control District
- ▶ Iberia Parish Communications District
- ▶ Iberia Parish Fire District #1



GIS Timeline 2010



Research

Review Needs Assessment Report

Research solutions for stakeholders

Make contacts with other parish GIS managers

Research GIS Server



Establish Governance

Presentations to stakeholders

Draft 3-year budget

Draft IGA

IGA finalized



Implementation

Acquired GPS data collection devices

Work on projects for multiple stakeholders

Purchase GIS Server

Implement aerial photography & zoning layer in ArcGIS Explorer





Resources 2010

- ▶ Grant for salary and benefits through middle of 2012
- ▶ Grant for equipment: \$57,831.00
- ▶ Budget for some travel and training
 - ▶ Esri classes
 - ▶ State GIS workshop
 - ▶ Monthly state GIS committee meetings
- ▶ Cooperation by all department heads
- ▶ Consultation and advice from other parish GIS managers
- ▶ Information on the Internet
 - ▶ Implementation plans
 - ▶ Esri "System Design Strategies"





Decisions, Decisions...

- ▶ Server hardware
 - ▶ No in-house IT department to consult for advice
- ▶ How to make data available?
 - ▶ Remote locations, no WAN
 - ▶ Plan for parish-wide disaster aftermath, running on generator
- ▶ What's the best way for various departments to make their own maps?





ArcGIS Explorer Desktop

- ▶ Variety of data types
- ▶ Local application, works without Internet or server
- ▶ Simple interface, easy to train users
- ▶ Buffer and drawing tools
- ▶ Departments can create quick and dirty maps for operational use

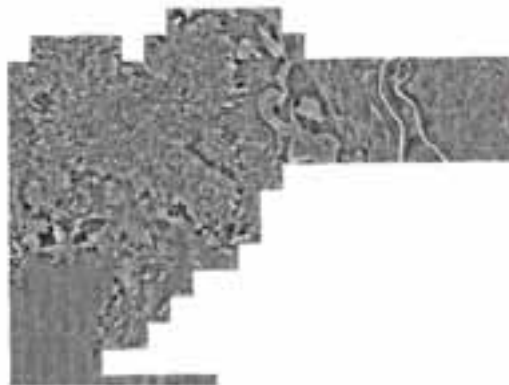




GIS Timeline 2011: Adding Assets

2011

- GIS server installed
- Data moved to server
- Map service creation begins
- Phase I of plan nearly complete



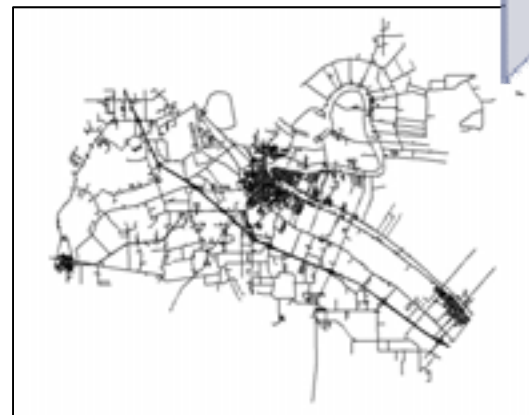
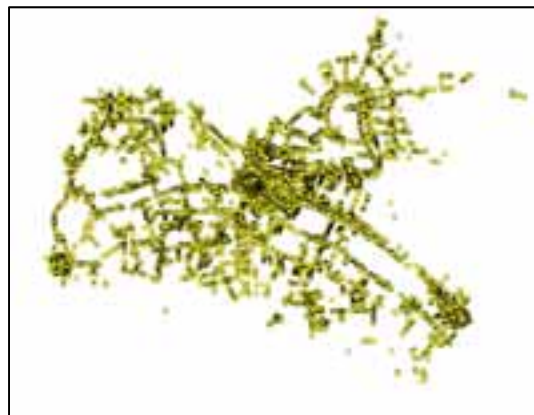
2011

- Image service created with 2010 aerial photography
- Over 20 users of ArcGIS Explorer viewer



2011

- Structure address & road centerline data collected by vendor
- Attended Esri UC





Next Steps – GIS Department

- ▶ Make map services available outside IPG domain
- ▶ Continue developing foundation layers
- ▶ Prepare to update Desktop and Server to 10.1
- ▶ Continue outreach to install and train users on ArcGIS Explorer
- ▶ Integrate GIS with departmental systems
- ▶ Begin developing web app portal for public





Conclusion

- ▶ Iberia Parish GIS is in Phase 2 of three-phase implementation plan
- ▶ All goals met so far
- ▶ Stakeholders continue to commit funds to continue work of GIS department

- ▶ Contact:
 - ▶ Amy Brassieur
 - ▶ GIS Department, Iberia Parish Government
 - ▶ abrassieur@iberiagov.net
 - ▶ 337-369-4469

