

# ARE CHILDREN ADOPTION POLICIES IMPACTED BY SAME-SEX MARRIAGES

Are Children Adoption Policies Impacted by

Same-Sex Marriages

Kaché Byrd

Tony E. Graham, D. Eng.

North Carolina Agricultural and Technical State University

December 5, 2011

Table of Contents

Research Question ..... 3

Objective Statement ..... 3

Hypothesis ..... 3

Target Audience ..... 3

Abstract ..... 4

Background Information ..... 5

Introduction ..... 5

Methodology ..... 6

Results ..... 7

Conclusion ..... 8

Future Research ..... 8

References ..... 9

Appendix ..... 10

## ARE CHILDREN ADOPTION POLICIES IMPACTED BY SAME-SEX MARRIAGES

Research question:

How has gay marriages evolved since the passing of “same-sex marriage” laws and the impact on adoption of children?

Objective Statement:

To show the growing trend of same-sex marriages and their possible impact on children adoption policies within the United States.

Hypothesis:

Are same sex marriages having an impact on children adoption policies?

Target Audience:

Same-sex couples, politicians, policy makers, general public

# ARE CHILDREN ADOPTION POLICIES IMPACTED BY SAME-SEX MARRIAGES

## Abstract

Using GIS data-modeling demonstrates the variables which impact the legalization of same-sex marriages and the adoption policies of lesbian, gay, bisexual and transgender (LGBT) couples.

This report uses demographic statistical data to analyze same-sex households in the United

States. Since the passing of same-sex marriage laws, findings show that there has been an

increased rate of same-sex couple's households in the United States. Of the fifty states and DC,

32 states, majority in the Midwest and West regions, have no explicit prohibition of same-sex

couples' adoption. Maine, Massachusetts, Vermont, Connecticut, New York, New Jersey,

Indiana, Illinois, California, Oregon and DC permit same-sex joint adoption. Michigan, Ohio,

North Carolina, Florida, Mississippi, Arkansas and Utah prohibit same-sex couples to jointly

adopt. New Hampshire is the only state that allows same-sex joint adoption depending on the

jurisdiction. The number of adopted children living with same-sex couples increased during 2000

to 2009 by 24,261 children; along with the number of same-sex couples living in the United

States during 2000 to 2010 by 307,606 couples.

# ARE CHILDREN ADOPTION POLICIES IMPACTED BY SAME-SEX MARRIAGES

## Background Information

Originally in the United States, formal adoption was reserved for white, middle-class, married couples. Today, all of the U.S. allows same-sex individuals to adopt children. Some states allow couples to jointly adopt children whether it is a stepchild (child of the head of household) or adopted. Other states prohibit any variable of same-sex joint adoption. The Human Rights Campaign, working for LGBT equal rights, compiled a list of states' statutes concerning the rights of gay adoption. Within the past decade the rights of gay adoption has been a controversial issue in the United States, this is possibly due to the growth trends, collected by the Census Bureau, of same-sex couples living in the fifty (50) states. The National Conference of State Legislatures documents provisions of each state and related statutes of same-sex marriage laws.

## Introduction

November, 2003 marked the proliferation of same-sex marriages in the United States. In 2004, same-sex couples began marrying in Massachusetts. Since the legalization of same-sex marriages, it has become a common topic amongst current events as states have begun legalizing same-sex marriage. According to Wikipedia, *LGBT is an [initialism](#) that collectively refers to the "lesbian, gay, bisexual, and transgender" community. In use since the 1990s, the term "LGBT" is an adaptation of the initialism "LGB", which itself started replacing the phrase "gay community" beginning in the mid-to-late 1980s, which many within the community in question felt did not accurately represent all those to whom it referred. The initialism has become mainstream as a self-designation and has been adopted by the majority "[sexuality and gender identity-based](#)" community centers and media in the [United States](#) and some other [English-](#)*

## ARE CHILDREN ADOPTION POLICIES IMPACTED BY SAME-SEX MARRIAGES

*speaking countries. The term LGBT is intended to emphasize a diversity of "sexuality and gender identity-based cultures" and is sometimes used to refer to anyone who is non-heterosexual or cisgender instead of exclusively to people who are homosexual, bisexual, or transgender.*

LGBT couples have petitioned equality rights of adoption. Because of this, same-sex marriage has shaped the dynamics of the American household. The United States Congress passed the Defense of Marriage Act (DOMA) in 1996 which bans federal recognition of same-sex marriages and allows states to take part in the act. Many states have passed constitutional amendments defining marriage between one man and one woman. Furthermore, in 2008 Florida, Arizona and California amended their constitutions passing the DOMA.

This report maps the years 2000 to 2010 Census and American Community Survey (ACS) data showing the change of unmarried partner and spouse same-sex couple's households in the United States and those states that allow same-sex couples to adopt. According to the Urban Institute research, "96 percent of all U.S. counties have at least one same-sex couples with children under 18 in the household, Census 2000 reveals." Out of the 594,000 same-sex couples households, about 115,000 reported having children. In 2009 approximately 21,740 same-sex couples adopted children compared to 2000's 6,477 statistic. About 32,571 children were living with same-sex couples in 2009 compared to the low 8,310 in 2000, these estimates were newly released by the Census Bureau.

### Methodology

Using ESRI ArcGIS software this report demonstrates spatial analysis of demographic statistical data of same-sex households in the United States. The data was collected using variables from the US Census Bureau for the years of 2000 and 2010, of persons being same-sex couples

## ARE CHILDREN ADOPTION POLICIES IMPACTED BY SAME-SEX MARRIAGES

(unmarried partner and reported spouse) in each of the fifty (50) states and District of Columbia (DC). Information concerning LGBT state laws to adopt was gathered from the Human Rights Campaign of most recent adoption policies in the U.S. Statutes concerning how states recognize same-sex marriage according to constitutional amendments pertaining to the DOMA and prohibition of same-sex marriages were gathered from the National Conference of State Legislatures.

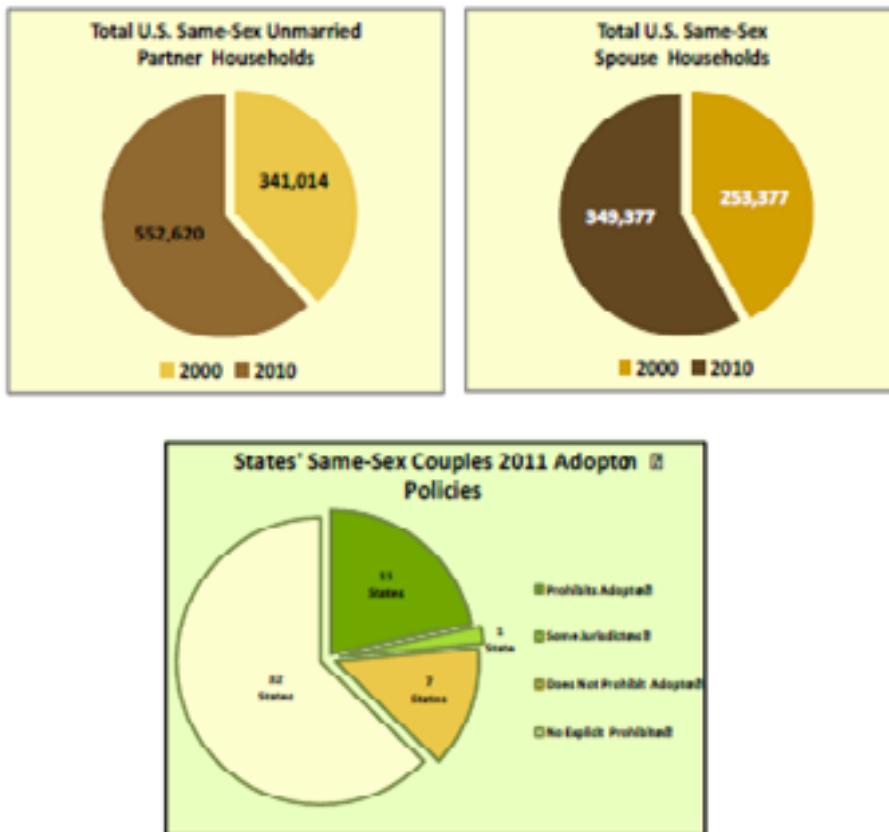
To generate comparison maps, the U.S. year 2000 *states and equivalent* shapefile was downloaded from *2000 U.S. Census Tiger/Line Shapefile*, then added to a geodatabase. The geodatabase was used in ArcMap GIS software to demonstrate the data. The findings gathered from the specified sources were generated into an excel document to be joined to the states shapefile attribute table.

### Results

Research shows between the years 2000 and 2010 there was an increase of 211,606 same-sex unmarried partner households in the United States and an increase of 96,000 married couple households according to Census 2000, Census 2010 and American Community Survey. The *American Community Survey Briefs* describe unmarried partner households as persons “reporting as an unmarried partner of the household but has a close relationship with the reference person” and reported spouse households as persons who were originally reported as a spouse of the householder. Of the fifty states and DC, 32 states, majority in the Midwest and West regions, have no explicit prohibition of same-sex couples’ adoption. Maine, Massachusetts, Vermont, Connecticut, New York, New Jersey, Indiana, Illinois, California, Oregon and DC permit same-sex joint adoption. Michigan, Ohio, North Carolina, Florida, Mississippi, Arkansas and Utah prohibit same-sex couples to jointly adopt. New Hampshire is the only state that allows same-sex

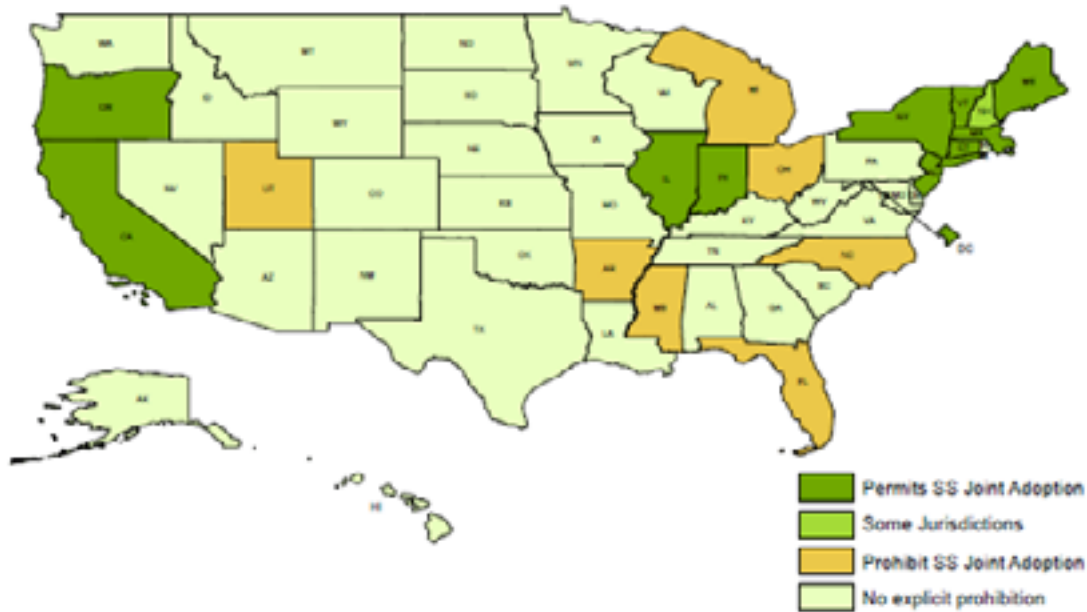
## ARE CHILDREN ADOPTION POLICIES IMPACTED BY SAME-SEX MARRIAGES

joint adoption depending on the jurisdiction. During 2004 and 2011, after Massachusetts was the first state to legalize same-sex marriage, Connecticut, Indiana, Vermont, New York and DC also legalized same-sex marriage. Three states, California, Arizona and Florida amended their constitution in 2008 passing DOMA. Currently Oregon, Nevada, New Mexico, Nebraska, New Jersey and Rhode Island have no statues concerning same-sex marriage. All other 35 states define marriage as one man and one woman. Four out of the six states allowing same-sex marriage, also allow same-sex couples to jointly adopt.

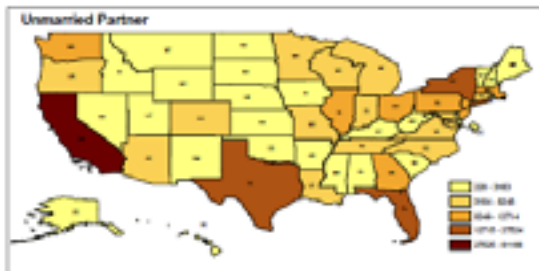




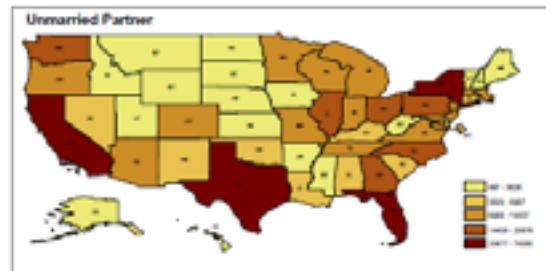
# U.S. LGBT Rights to Adopt 2011



Number of Same-Sex Couple Households 2000

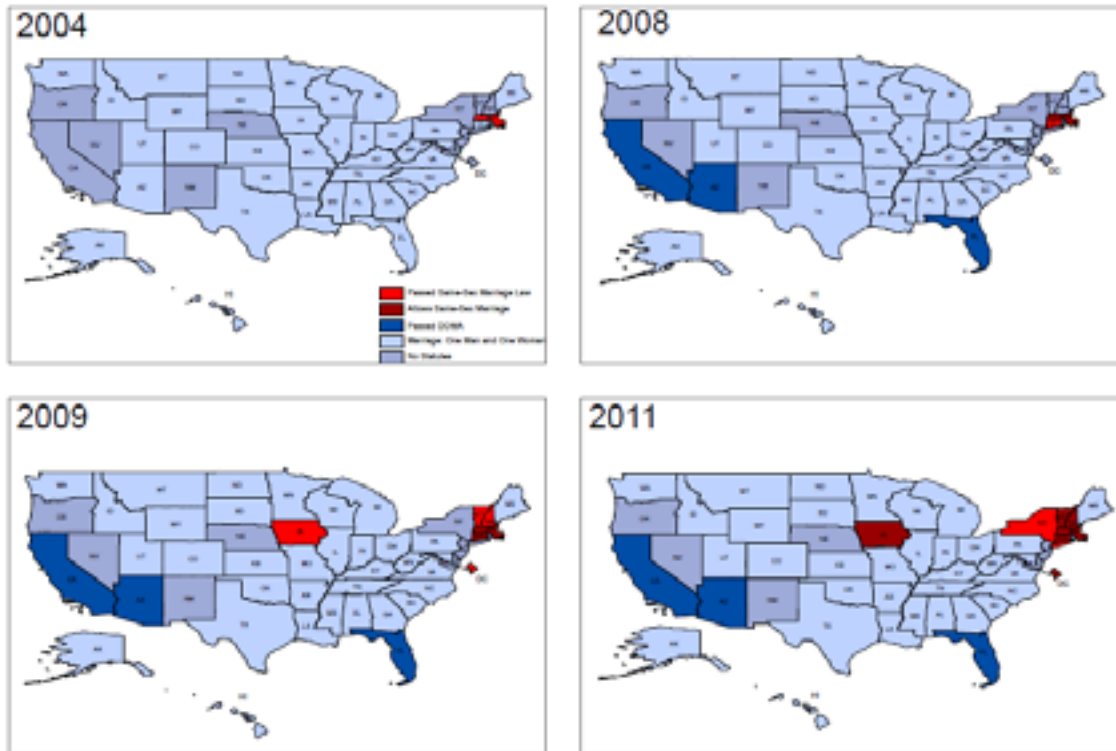


Number of Same-Sex Couple Households 2010



Unmarried Partner: Persons reported as "unmarried partner" had same relation with head of household.  
 Spouse: Persons originally reported as spouse of the head of household; later spouse/spouses were reclassified "unmarried partner".

## U.S. Statuses of Same-Sex Marriage Legalization



### Conclusion

Statistics show that in previous years to present time, there has been an increase of adopted children in same-sex couple's households increasing during 2000 to 2009 by 24,261 children; along with the number of same-sex couples living in the United States during 2000 to 2010 by 307,606 couples. Through this research, it has not been confirmed the legalization of same-sex marriages have impacted child adoption policies for LGBT couples. It can be concluded that, because of the proliferation of same-sex couples' households, LGBT petition more strongly for the adoption of children. If the rate of states legalizing same-sex marriages continues to increase, more states will also prohibit same-sex couples to jointly adopt.

# ARE CHILDREN ADOPTION POLICIES IMPACTED BY SAME-SEX MARRIAGES

## Future Research

Legalization of same-sex marriages has not been concluded to have any impact on children adoption policies for LGBT couples. Much research remains pertaining to the number of same-sex joint adoptions, state-by-state, in previous years and the current year, which was not thoroughly researched by the Williams Institute or the Urban Institute. In addition, it has not been cumulatively documented the timeline of change in adoption policies, if any, state-by-state between the years 2004 and 2011 of LGBT rights to jointly adopt.

If further research is thoroughly conducted, patterns, if any, can be analyzed to note any correlation of each state's change in adoption policies and statutes of legalizing same-sex marriages. Furthermore, growth trends can be analyzed to note the number of same-sex joint adoptions per state between 2004 and 2011 to ultimately conclude if there is any impact of same-sex marriage laws on children adoption policies.

## References

- Census bureau: Same sex couples.* (n.d.). Retrieved from <http://www.census.gov/hhes/samesex/>
- Gates, G. (2003). Gay and lesbian families in the census: Couples with children. *Urban Institute: Research of Record*, Retrieved from [http://www.urban.org/UploadedPDF/900626\\_Checkpoints\\_Couples.pdf](http://www.urban.org/UploadedPDF/900626_Checkpoints_Couples.pdf)
- Human rights campaign: State laws & legislation.* (n.d.). Retrieved from <http://www.hrc.org/laws-and-legislation/state>
- Lofquist, D. (2011). Same-sex couple households. *American Community Survey Briefs*, Retrieved from <http://www.census.gov/prod/2011pubs/acsbr10-03.pdf>
- Same-sex marriage, civil unions and domestic partnerships.* (2011, July 14). Retrieved from <http://www.ncsl.org/default.aspx?tabid=16430>

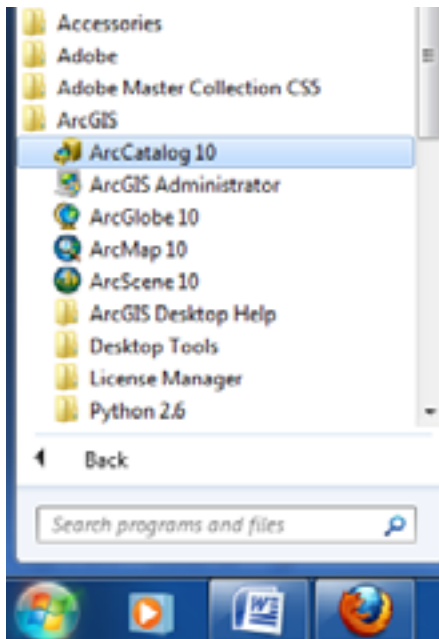
# ARE CHILDREN ADOPTION POLICIES IMPACTED BY SAME-SEX MARRIAGES

## Appendix

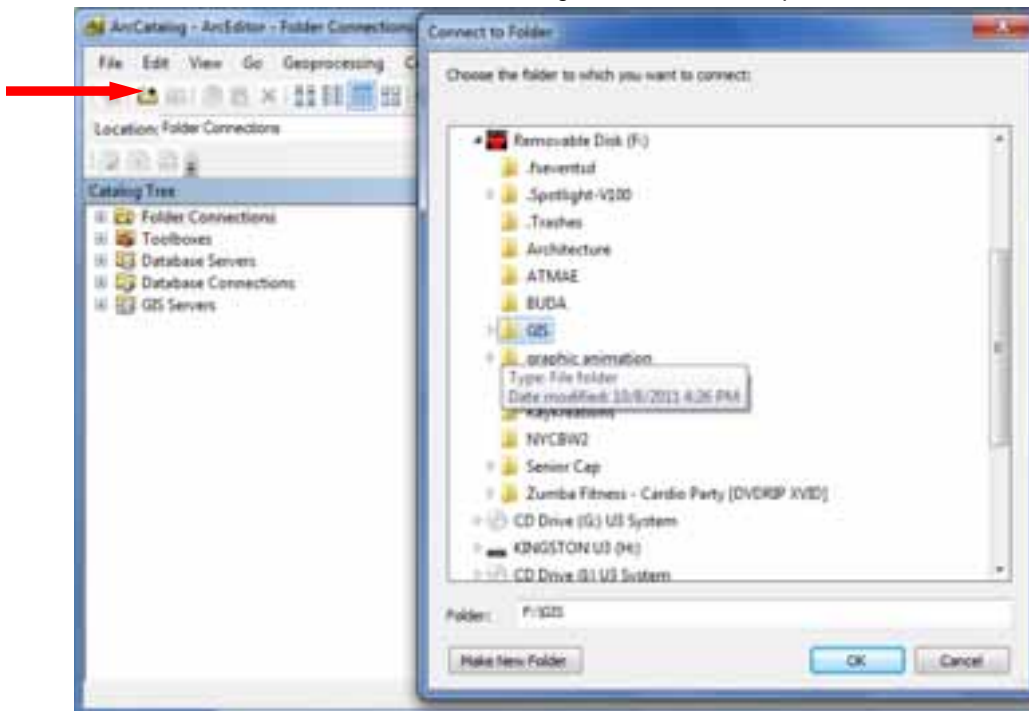
### CREATING THE GEODATABASE

Before creating the Geodatabase, be sure all shapefiles and other data to be used in generating the map have been downloaded and saved to a specified location for easy retrieval. You can add data to the geodatabase once created.

1. Open ArcCatalog 10.

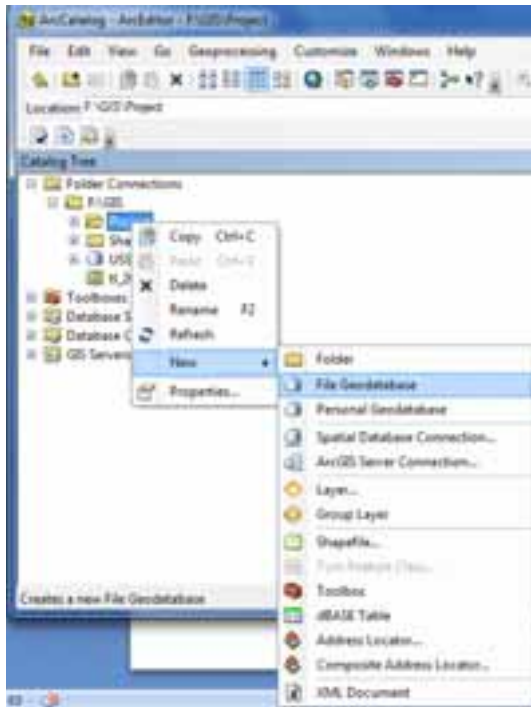


2. Click the Connect to Folder icon and navigate to location to place GeoDatabase. Click OK.

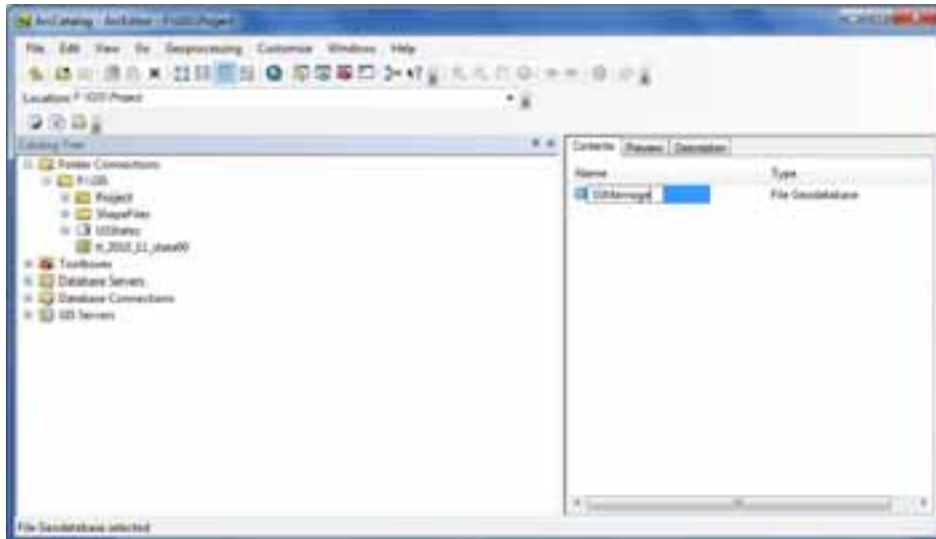


## ARE CHILDREN ADOPTION POLICIES IMPACTED BY SAME-SEX MARRIAGES

3. In the **Folder Connections** drop down menu navigate to the specified location. Right-click the folder and click **New>File Geodatabase**.

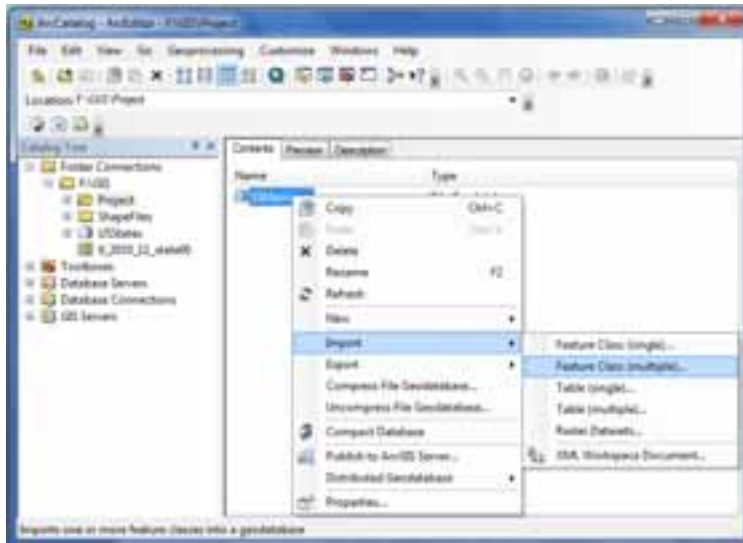


4. Rename the geodatabase from New File Geodatabase to **SSMarriage**.

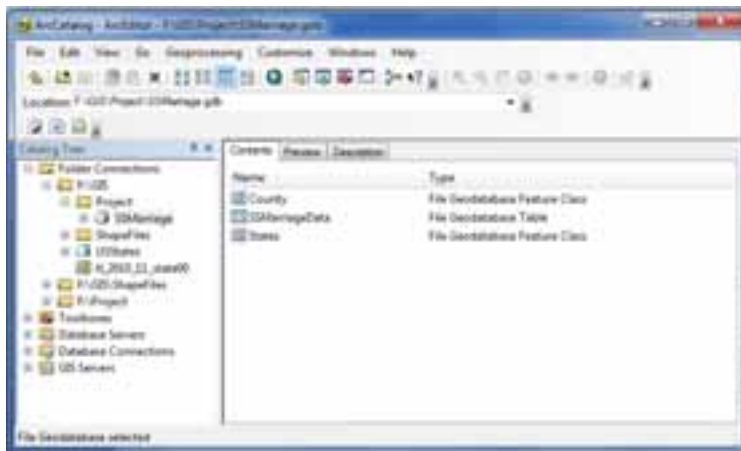


5. To import shapefiles, in ArcCatalog's right panel, right click the **SSMarriage** file geodatabase, click **Import>Feature Class (multiple)**.

## ARE CHILDREN ADOPTION POLICIES IMPACTED BY SAME-SEX MARRIAGES



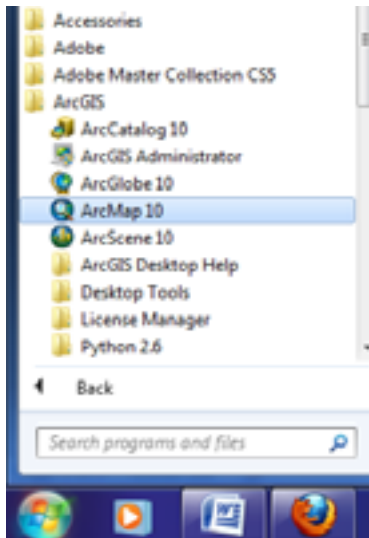
6. In the dialog box, click the **browse button** to the right of the Input Features field, browse to the location of your shapefiles. Hold the **Shift** key down to select shapefiles and click **Add**.
7. I created an Excel table, named **SSMarriageData**, which I will use to generate the maps. To import a data table: right click **SSmarriage** file geodatabase, **Import>Table (single)**. In the dialog box, click the **browse button** to the right of the Input Rows, browse to the location of the table, select the file, and click **Add**.
8. Type **SSMarriageData** in the Output Table field and click **OK**.  
The geodatabase should be similar to:



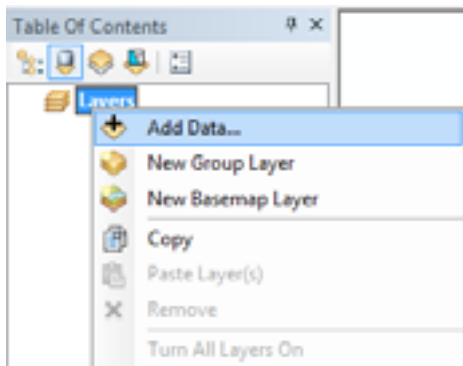
### CREATE NEW MAP DOCUMENT: SSHouseholdPercentage

1. Open **ArcMap 10** to create a new map.

# ARE CHILDREN ADOPTION POLICIES IMPACTED BY SAME-SEX MARRIAGES



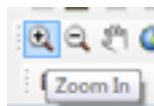
2. In the **Table of Contents** panel, right click **Layers**, and click **Add Data**.



3. Navigate to **SSMarriage.gdb** (this is the geodatabase just created). Double click the **States** shapefile (this is the shapefile of the United States).

4. Create bookmarks for easy retrieval to zoomed in areas of the US:

- a. Click the **Zoom In** icon

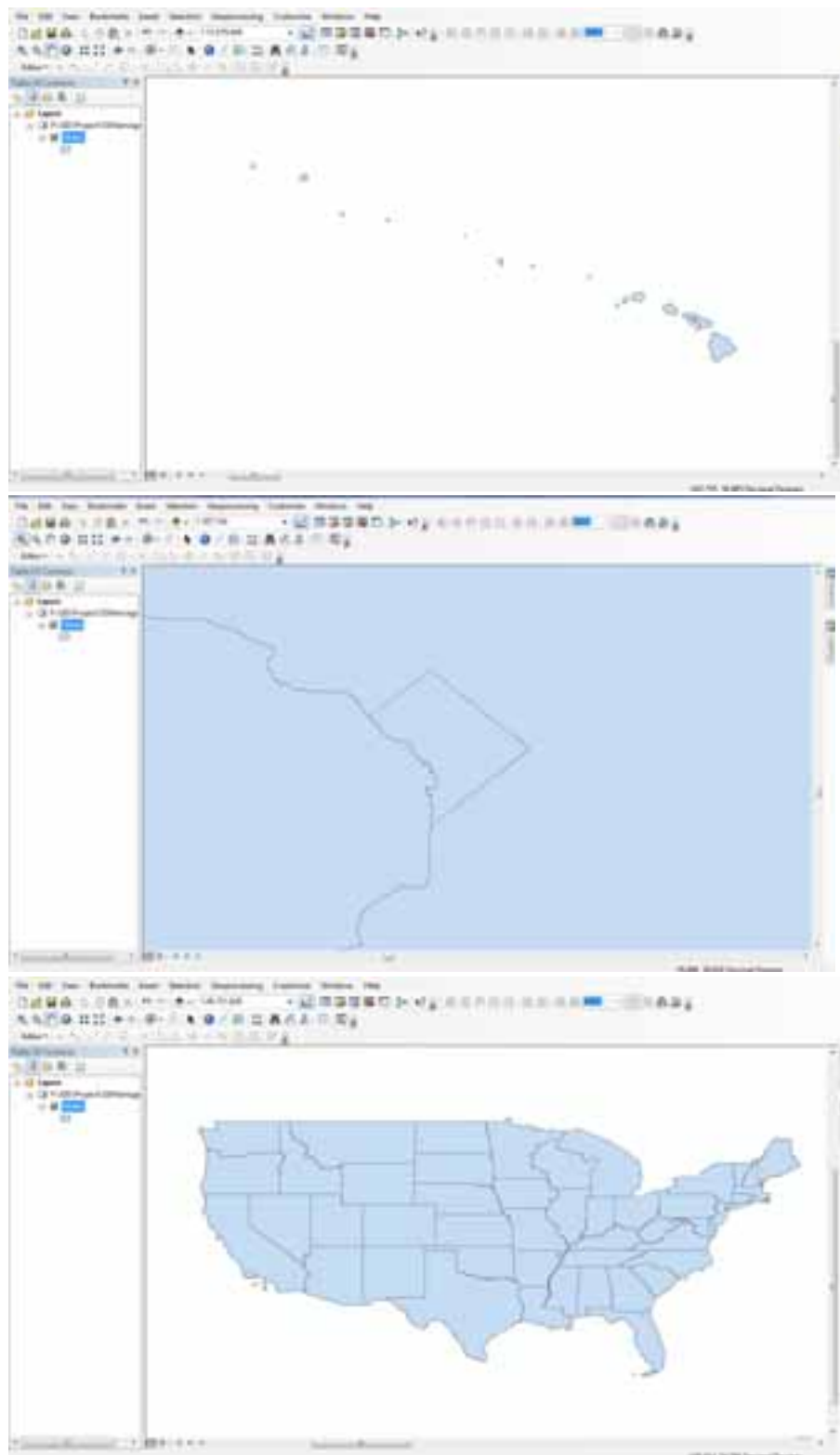


- b. Draw a marquee over the shape of Alaska by click and dragging the cursor. Modify the view as needed using the **Zoom In** tool and/or the **Hand** tool.



- c. On the main tool bar choose **Bookmarks>Create**. Name the bookmark **Alaska**.
- d. Zoom out and repeat these steps to create two additional bookmarks [bookmarks will be used later as inserts], name them **Hawaii**, **District of Columbia** and **States**:

# ARE CHILDREN ADOPTION POLICIES IMPACTED BY SAME-SEX MARRIAGES



5. Save document in the project's folder, name it **SSMarriage2000\_2010**.

## JOIN DATA TO ATTRIBUTE TABLE

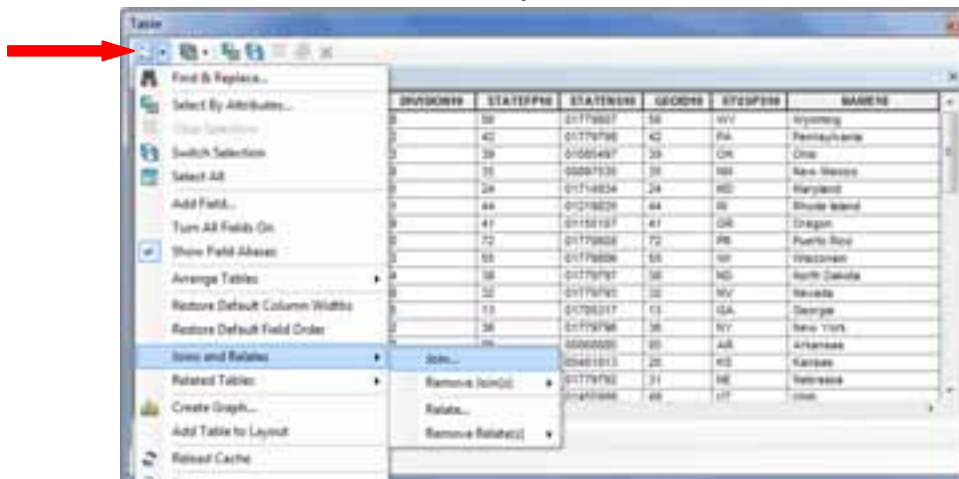


## ARE CHILDREN ADOPTION POLICIES IMPACTED BY SAME-SEX MARRIAGES

1. Right click the **States** layer and click **Open Attribute Table**.

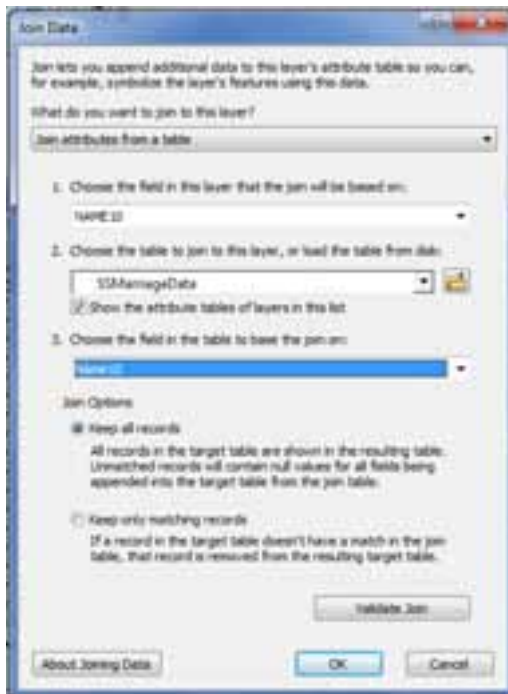


2. In the table window, click **Table Options** icon, **Join and Relates>Join**



3. The **Join Data** window will appear. The common field to join both tables is "Name10," in the first drop down menu (1), select **Name10**, in the second field (2), click the browse icon and choose **SSMarriageData** within the **SSMarriage** geodatabase folder. In the third (3) drop down menu, select **Name10**. The table should be completed as follows:

## ARE CHILDREN ADOPTION POLICIES IMPACTED BY SAME-SEX MARRIAGES



4. Click **OK**. \*\*If a pop-up menu appears to index a field, click **No**\*\*
5. Review the Attribute Table to check if fields have been added. If it has been done properly you should see the following fields:

\$FID	\$SHAPE	\$SHAPE_AREASQ	\$PERIMETER	\$PERIMETER_SQ	\$LENGTH	\$LENGTH_SQ	\$AREA	\$PERIMETER_LENGTH_RATIO	\$PERIMETER_LENGTH_RATIO_SQ	\$PERIMETER_LENGTH_RATIO_SQ'	\$PERIMETER_LENGTH_RATIO_SQ'	\$PERIMETER_LENGTH_RATIO_SQ'	\$PERIMETER_LENGTH_RATIO_SQ'	\$PERIMETER_LENGTH_RATIO_SQ'
0.424189	0.010192	2873420	2970.919	1881	2000	2728	7459	No	No	No	No	No	No	No
0.201	0.007941	3287644	1720.888	87.88	14880	36871	8188	No Status	Passed Other	Other 2000	Other 2000	Yes	Yes	Yes
0.895742	0.014319	4287181	1629.186	3754	11111	3141	4761	No	No	No	No	Yes	No	No
0.887426	0.020418	1487041	1674.267	4298	8838	3887	1211	No	Passed Law	Yes	Yes	Yes	Yes	Yes
0.816121	0.017658	193880	1607.834	1181	2339	481	881	No	No	No	No	Yes	No	No
1.80188	0.004939	112078	1611.121	1182	4141	1149	881	No Status	No Status	Passed Law	Yes	Yes	Yes	Yes
0.847698	0.004876	11882178	16881.17	28422	4470	8828	2128	No	Passed Other	Other 2000	Other 2000	Yes	No	No
0.847691	0.022104	4188412	1687.812	1188	1881	8281	1111	No	No	No	No	Yes	No	No
0.887426	0.02881	1711111	1688.181	1188	1188	1881	1481	No	No	No	No	Yes	No	No
0.88812	0.00881	18881	1687.881	181	1188	1881	1481	No	No	No	No	Yes	No	No
0.888124	0.011207	1171828	12818.812	12714	28178	10771	1181	No	No	No	No	Yes	Yes	Yes
0.4714	0.00881	18881	1681.881	181	1188	1881	1481	No	No	No	No	Yes	No	No
0.1188	0.011174	1681114	1681.114	1881	1881	1881	1471	No	Passed Law	Yes	Yes	Yes	No	No
0.12178	0.011148	188114	1681.114	1881	1881	1881	1471	No	No	No	No	Yes	No	No
0.447126	0.012884	4511788	4718.887	1181	847	1881	1111	No	No	No	No	Yes	No	No
0.118812	0.011112	4488178	4121.112	1181	887	4421	1181	No	No	No	No	Yes	No	No
0.888128	0.00881	1271882	1181.881	1181	1881	1287	1171	No	No	No	No	Yes	Yes	Yes
0.887426	0.01718	1288448	1771.881	881	1881	4421	1881	No	No	No	No	Yes	No	No
0.88812	0.01111	41881	1681.111	1181	1288	1181	1171	Passed Law	Yes	Yes	Yes	Yes	Yes	Yes
0.11881	0.011178	1881114	1681.114	1881	1114	1181	1171	No	No	No	No	Yes	No	No

6. Modify the Attribute table to show these fields as the first fields once the table is opened, by clicking the field name and dragging to the left of the Attribute Table.
7. Close the Attribute Table.

### USE ATTRIBUTES TO SYMBOLIZE DATA

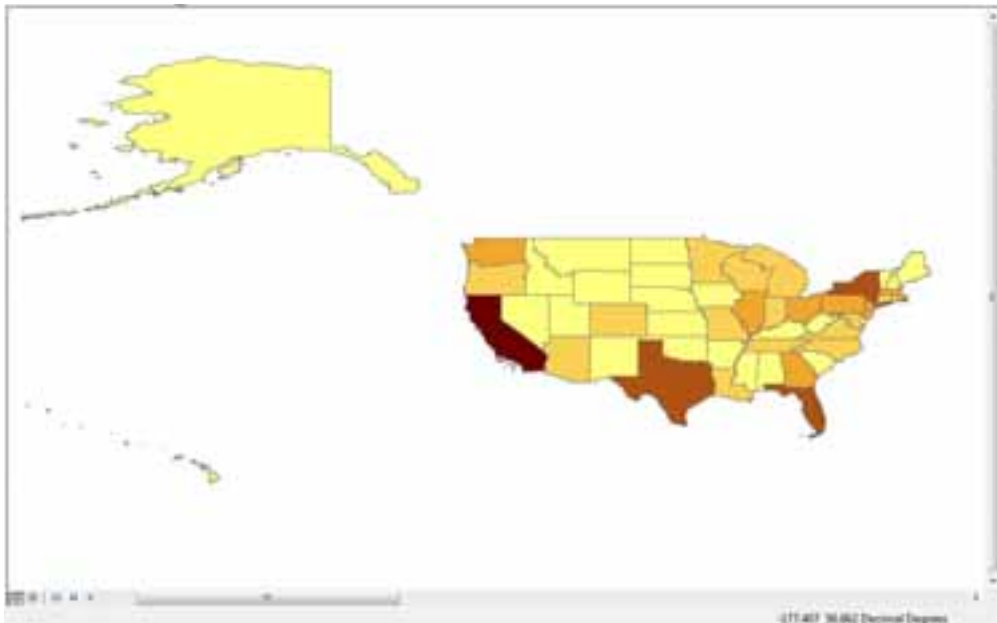
1. Zoom out to view full view of shapefile polygons.
2. Right click **States** layer, click **Properties**
3. In the Properties menu click the **Symboloby** tab, **Quantities>Graduated Colors**

## ARE CHILDREN ADOPTION POLICIES IMPACTED BY SAME-SEX MARRIAGES

4. For the **Value** field, select **SSUM2000**, to show the percentage of same-sex couple households in the United States during the year of 2000.
5. Choose a default color ramp from the drop down menu.



6. Click **OK**. Map should appear as the following:



## ADD NEW DATA FRAME

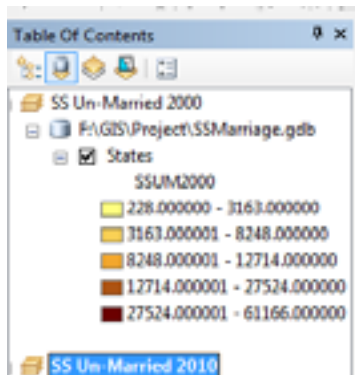
Now we will create the comparison map for same-sex couple households in the United States during the year of 2010.

1. Nested under the **Insert** tab on the main toolbar, click **Data Frame** to add a new data set.

## ARE CHILDREN ADOPTION POLICIES IMPACTED BY SAME-SEX MARRIAGES



2. Change the name of the data set to **SS Un-Married 2010** by clicking twice.
3. Repeat to change the name of the first data set, titled **Layers** to **SS Un-Married 2000**

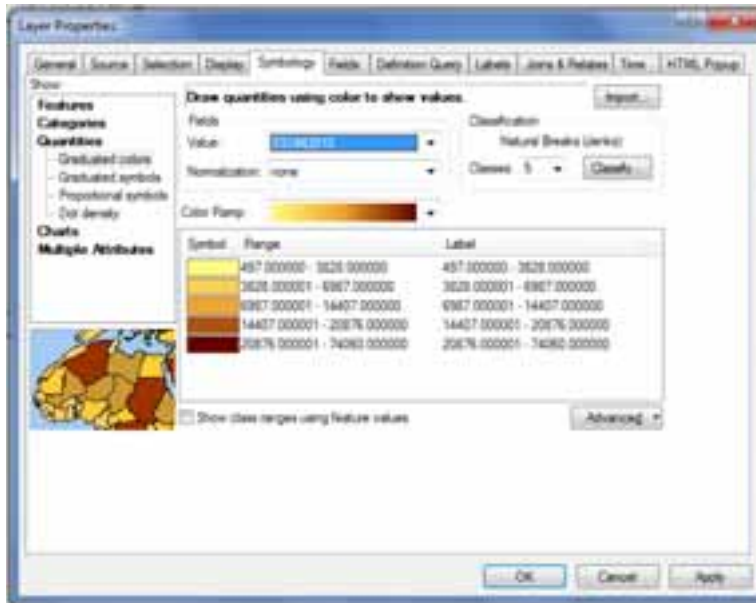


4. Copy and paste **States** layer to new data frame. Right click **States** layer and click copy. Right click **SS Un-Married 2010** data frame and click **Paste Layer(s)**

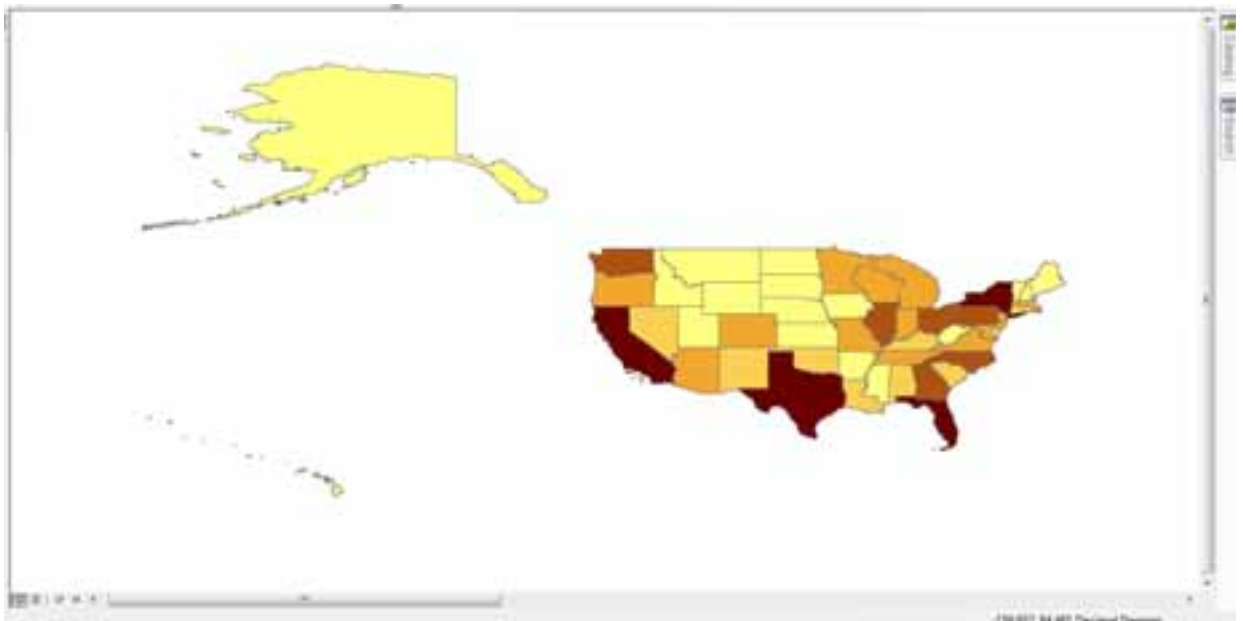


## ARE CHILDREN ADOPTION POLICIES IMPACTED BY SAME-SEX MARRIAGES

5. Create bookmarks for this new data set, as explained previously: **Alaska, Hawaii, District of Columbia and States.**
6. Activate each data set by right clicking its name and click **Activate**.
7. Activate **Percentage 2010** data set.
8. Right click the **States** layer to change the symbology of this layer by going to **Properties** and click the **Symbology** tab.
9. Under the **Quantities>Graduated colors** change the **value** field to **SSUM2010**



10. Click **OK**. Map should appear as the following:

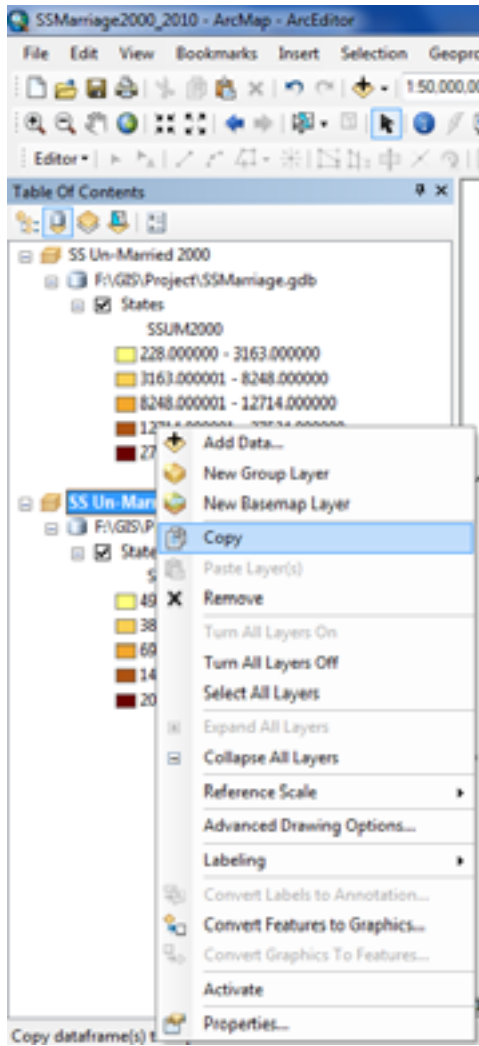


**\*\*NOTE:** Create a **Full View** bookmark of all US territories for efficiency instead of having to zoom in and out of the map between changes. The new bookmark view will appear like the above image. \*\*\*

# ARE CHILDREN ADOPTION POLICIES IMPACTED BY SAME-SEX MARRIAGES

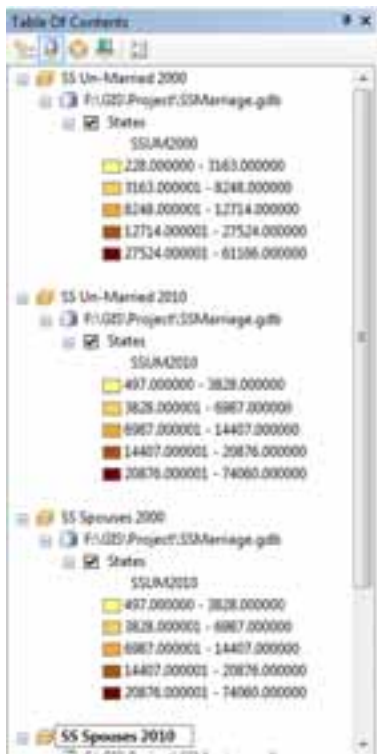
## GENERATE COMPARISON MAPS

1. Copy and Paste **SS Un-Married 2010** by right clicking the data set and click **Copy**

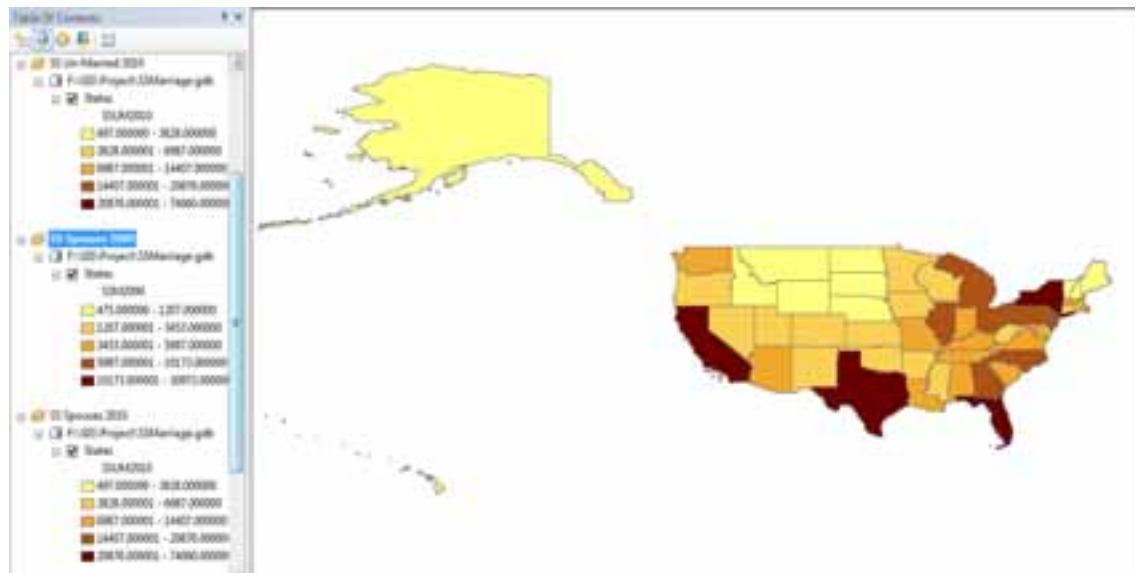


2. On the main toolbar, click the **Edit** menu. Click **Paste**.
3. Repeat these steps to create another data frame.
4. Rename the data frames as **SS Spouses 2000** and **SS Spouses 2010**.

# ARE CHILDREN ADOPTION POLICIES IMPACTED BY SAME-SEX MARRIAGES



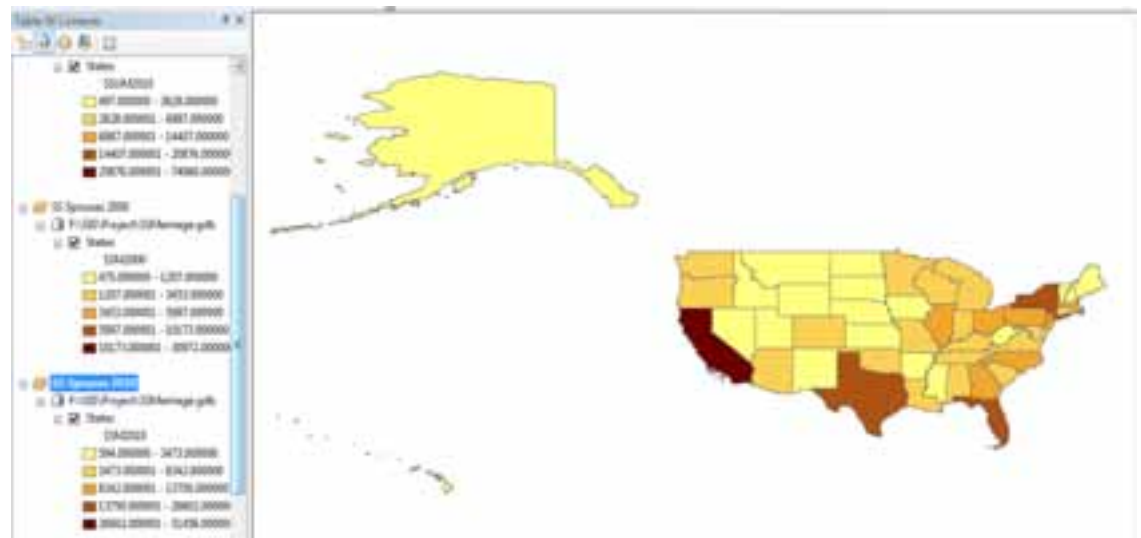
5. Change the symbology of these data frames to reflect the data set.
  - a. **SS Spouses 2000:** Value field = SSM2000



- b. **SS Spouses 2010:** Value field = SSM2010

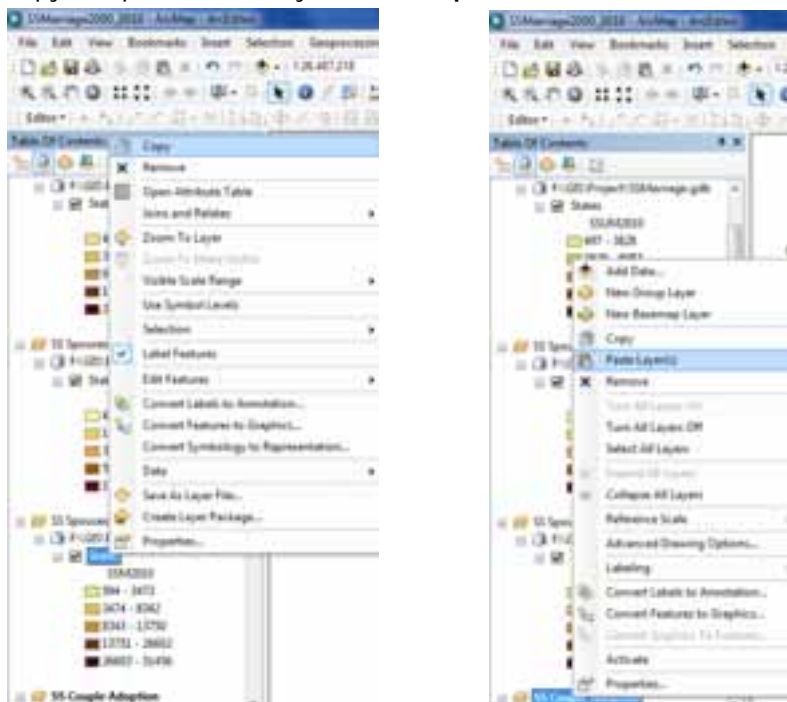


## ARE CHILDREN ADOPTION POLICIES IMPACTED BY SAME-SEX MARRIAGES



Now we will generate a comparison map of prohibition of Same-Sex couples to adopt children.

1. Insert new data frame.
2. Rename the Data frame **SS Couple Adoption**
3. Copy and paste **States** layer from **SS Spouses 2010**.

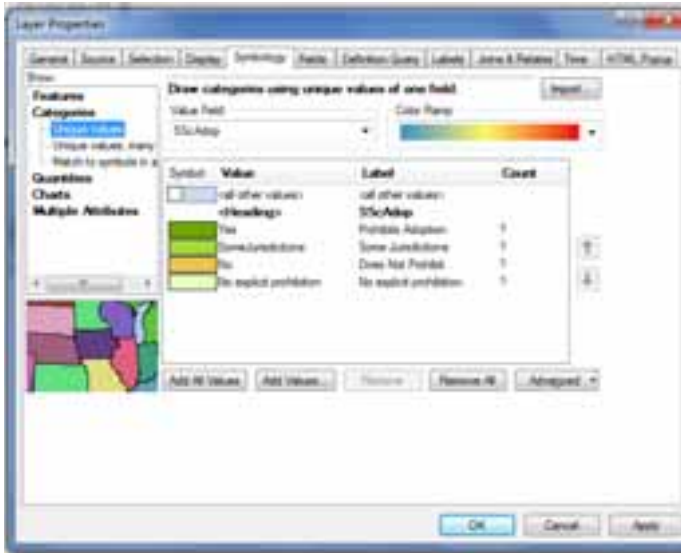


4. Right click the new **States** layer, click **Properties>Symbology>Categories>Unique Values**.
5. Change the value field to **SScAdop**.



## ARE CHILDREN ADOPTION POLICIES IMPACTED BY SAME-SEX MARRIAGES

6. Click **Add Values** to show all attributes of **SScAdop**.

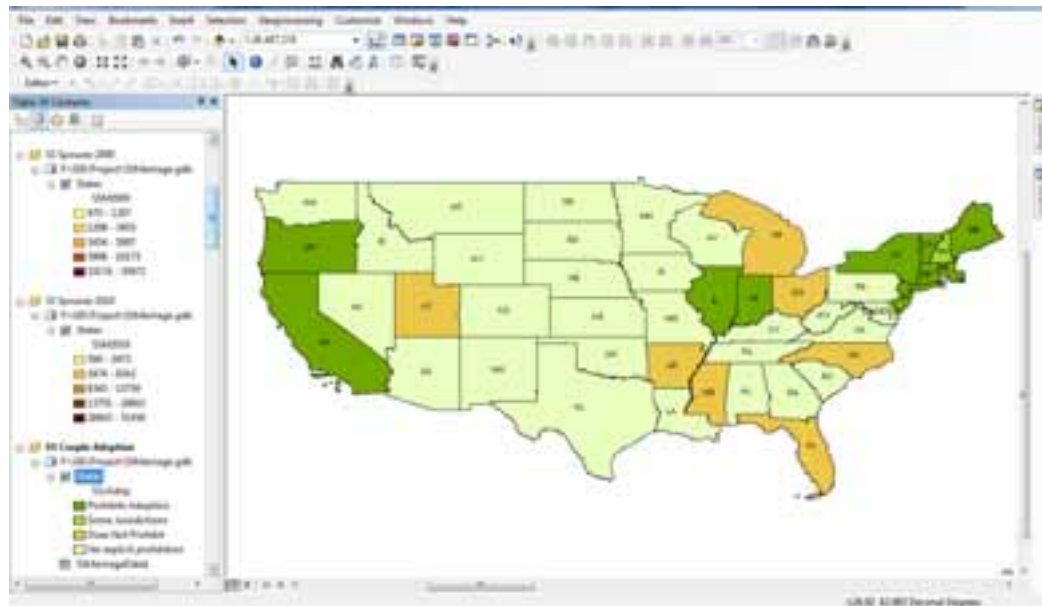


7. Since this is a different comparison map dealing with prohibition of adoption of children, the color ramp should be changed (as seen above). Change the colors by doing the following.
  - a. Double click the symbology representing **Yes** attribute.
  - b. The **Symbol Selector** window will appear



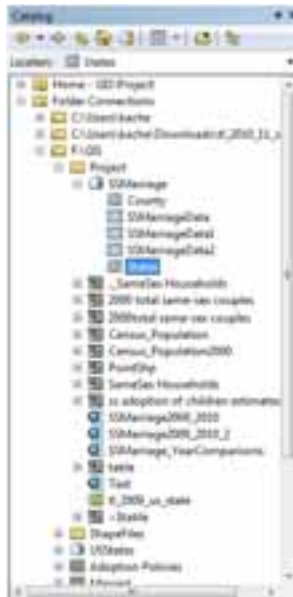
- c. Change the **fill color** and **outline Color** to the color of preference and click **OK**.
- d. Repeat these steps for the remaining attributes
- e. Click **OK** to close the **Properties** window.

## ARE CHILDREN ADOPTION POLICIES IMPACTED BY SAME-SEX MARRIAGES



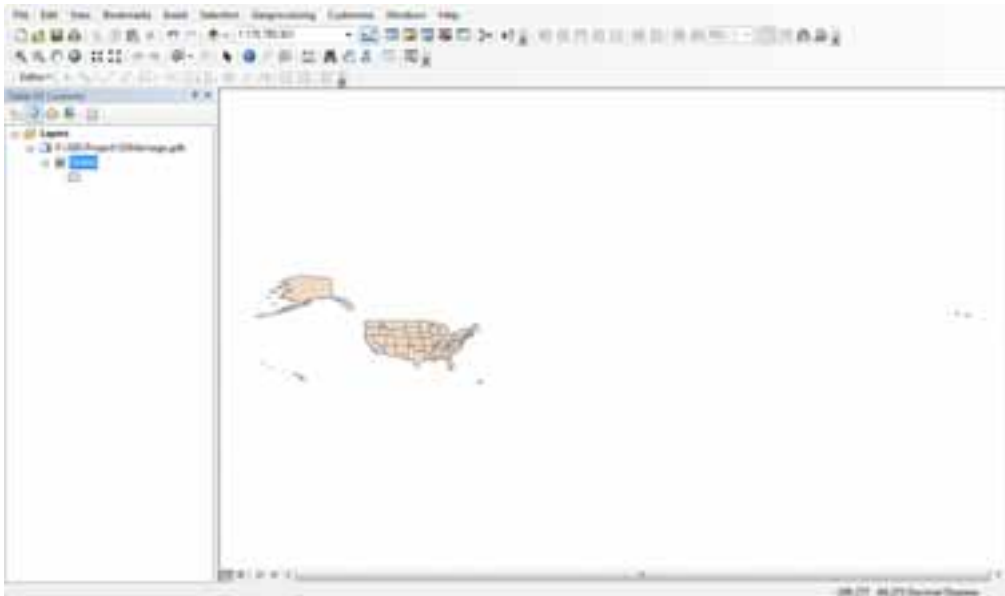
We will now create year comparison maps of state statutes of legalizing same-sex marriages. This is to show, which years states decided to legalize same-sex marriages, define marriage, or pass an amendment.

1. Open a blank map in ArcMap. **File>New>Blank Map.**
2. Click **OK.**
3. From **ArcCatalog** navigate to the location of **SSMarriage.gdb**.



4. Click the **States** polygon shapefile and drag over to the blank map.

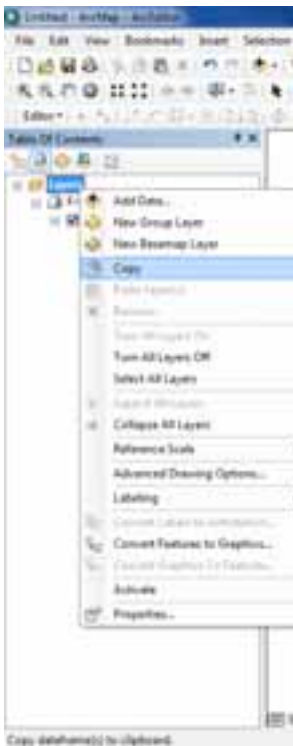
## ARE CHILDREN ADOPTION POLICIES IMPACTED BY SAME-SEX MARRIAGES



5. Join the **SSMarriage** data table to the attribute table.

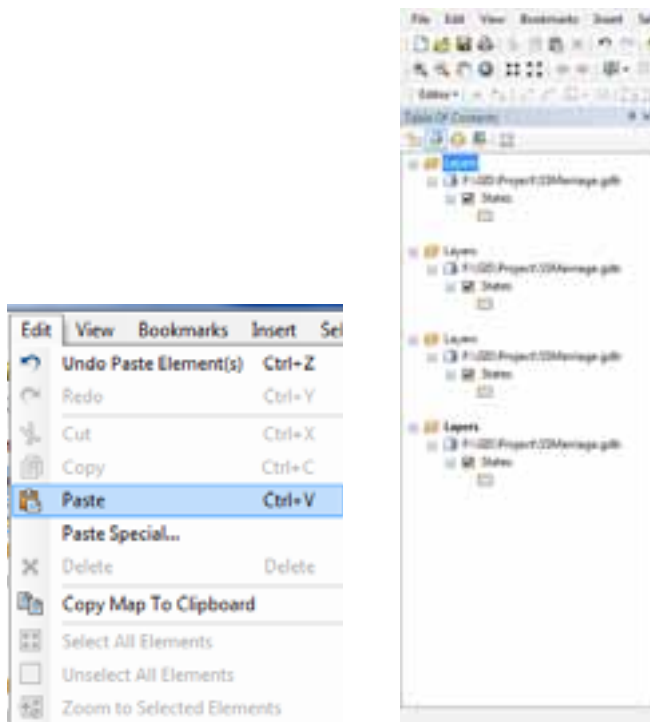
For these year comparison maps, we will compare four years which noted any change in their statuses of gay marriage.

6. Create a copy of the **Layers** data frame.



7. Paste the data frame an additional **three** times.

## ARE CHILDREN ADOPTION POLICIES IMPACTED BY SAME-SEX MARRIAGES

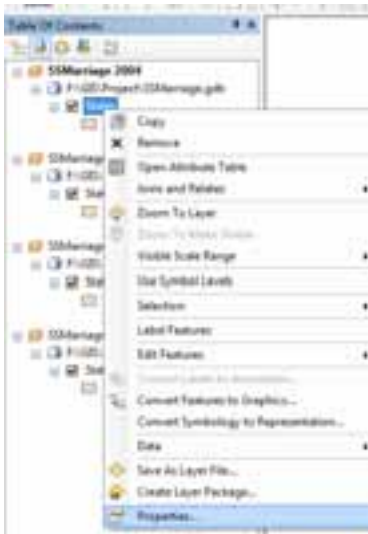


8. Rename each data frame: **SSMarriage 2004**, **SSMarriage 2008**, **SSMarriage 2009**, **SSMarriage 2010**.



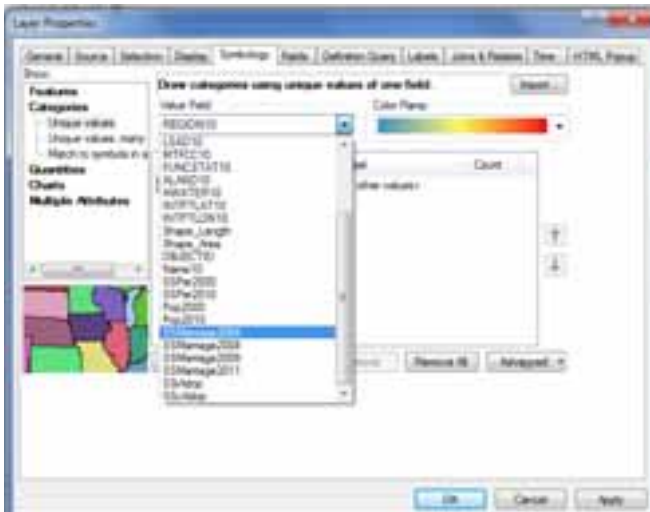
9. Activate the first data frame **SSMarriage 2004**. Right click the **States** layer and click **Properties**.

## ARE CHILDREN ADOPTION POLICIES IMPACTED BY SAME-SEX MARRIAGES



10. Navigate to **Symbology>Categories>Unique Values**.

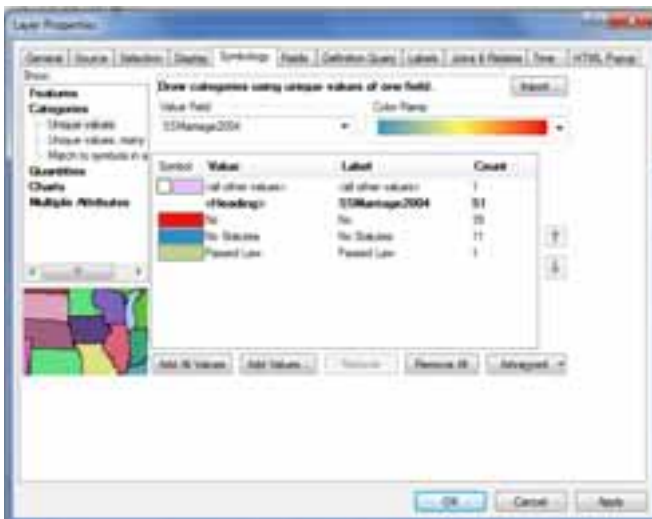
11. Change the value fields to **SSMarriage 2004**.



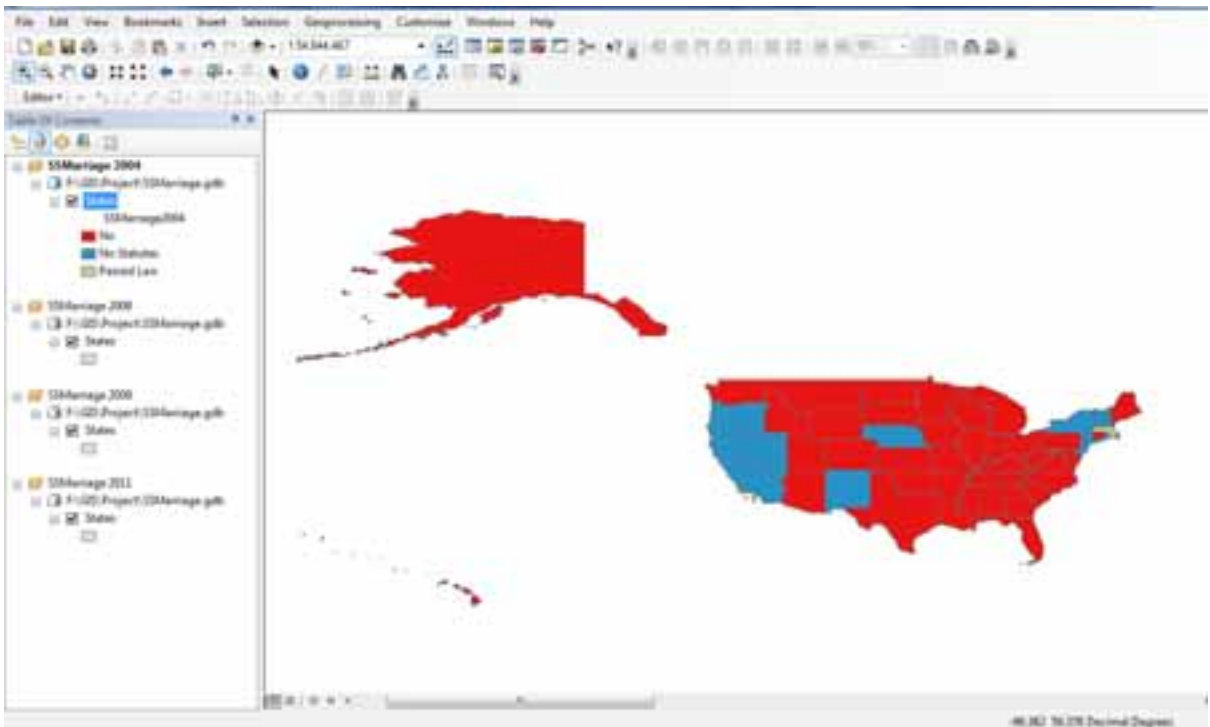
12. Click **Add All Values** to display all values.

13. Delete the **Null** value by right clicking the symbology and click remove and uncheck **<all other values>**.

# ARE CHILDREN ADOPTION POLICIES IMPACTED BY SAME-SEX MARRIAGES



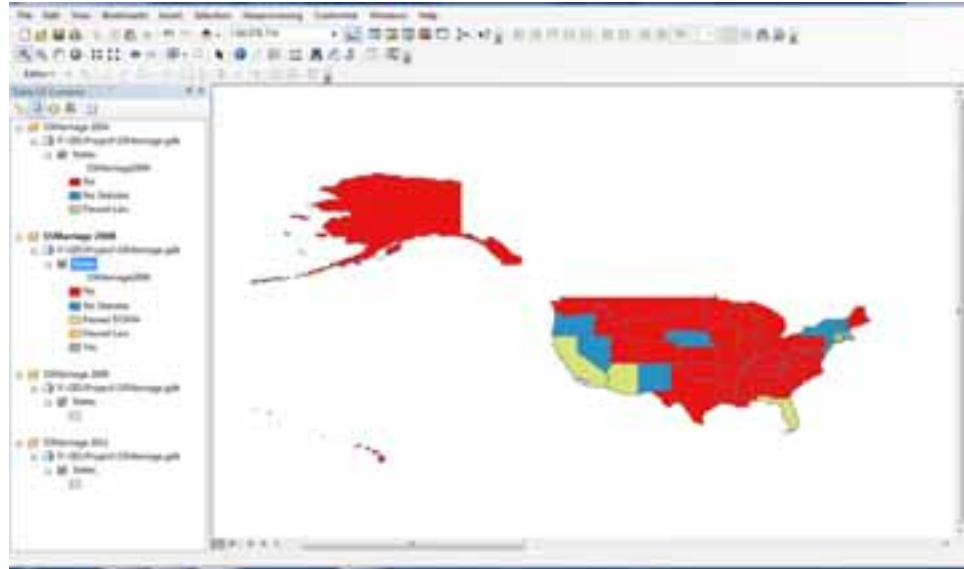
14. Click Ok.



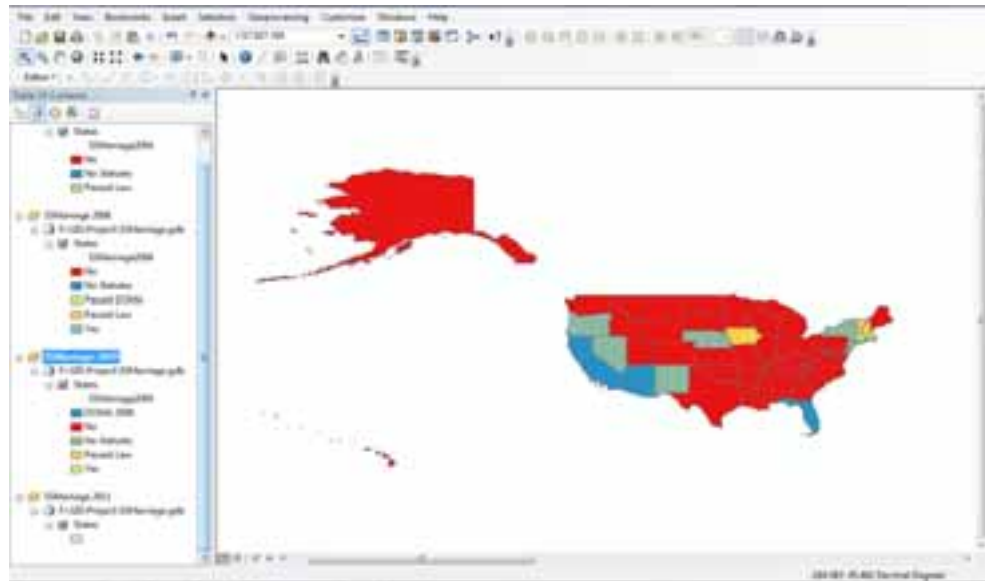
15. Repeat these steps for the remaining data frames, changing the value field, to correlate with that year.

# ARE CHILDREN ADOPTION POLICIES IMPACTED BY SAME-SEX MARRIAGES

a. SSMarriage 2008 value field = SSMarriage2008

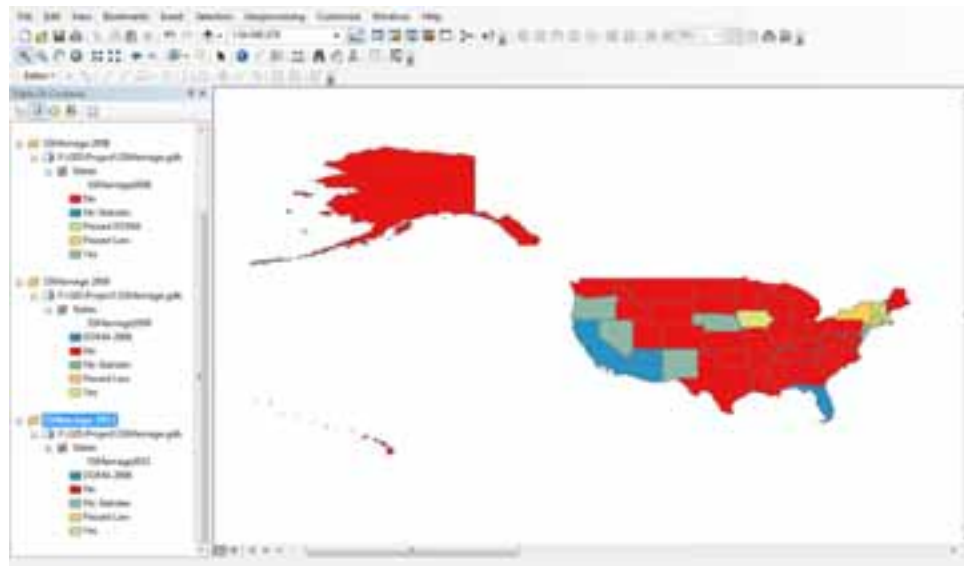


b. SSMarriage 2009 value field = SSMarriage2009



c. SSMarriage 2011 value field= SSMarriage2011

## ARE CHILDREN ADOPTION POLICIES IMPACTED BY SAME-SEX MARRIAGES



We will now change the value field titles and symbol colors to preference.

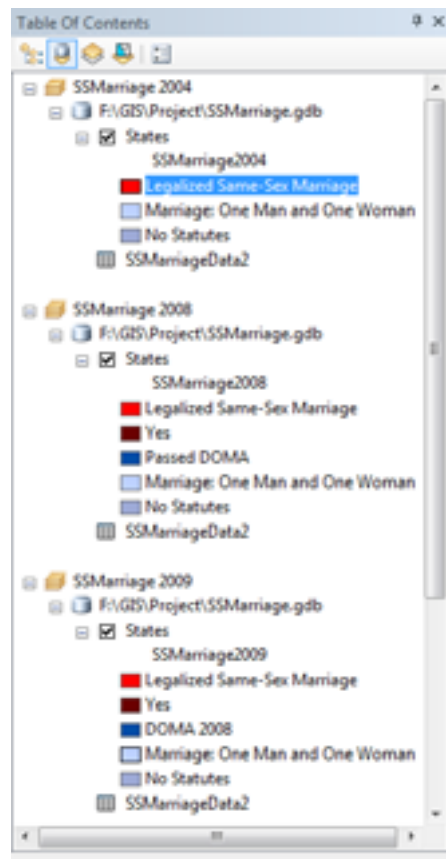
1. Activate **SSMarriage 2004** data frame.
2. Click the **No** value, and click again to change the name of the field to **Marriage: One Man and One Woman**.
3. Click the red symbol that represents the **No** field.
4. The **Symbol Selector** window will appear.



5. Change the symbol color to your preference by clicking the drop down arrow of **Fill Color**.
6. Click **OK**.
7. Repeat these steps to change symbol colors to preference and the remaining value names of all other data frames to the following:
  - a. **No** = **Marriage: One Man and One Woman**
  - b. **Passed Law** = **Legalized Same-Sex Marriage**

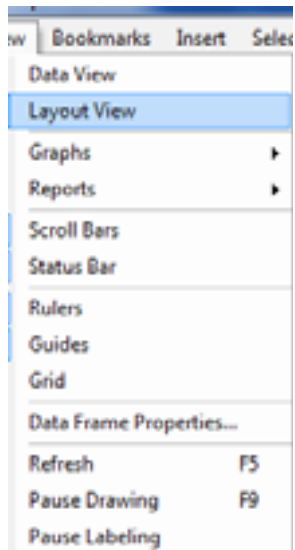


## ARE CHILDREN ADOPTION POLICIES IMPACTED BY SAME-SEX MARRIAGES



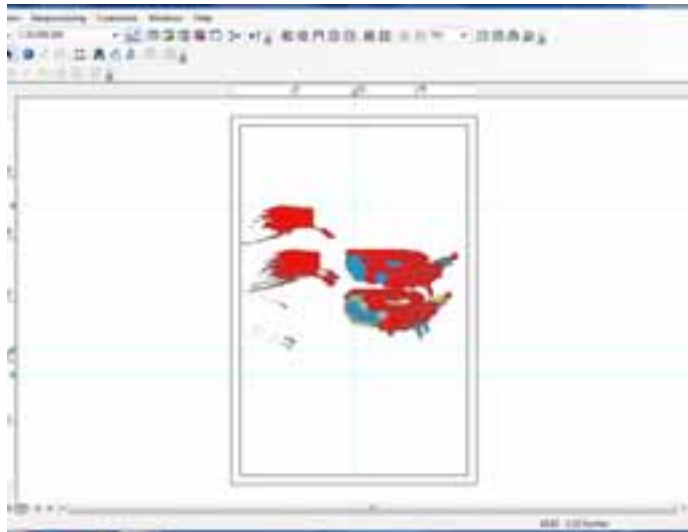
### Create Layout of Maps for Display

1. Navigate to **View>Layout View**

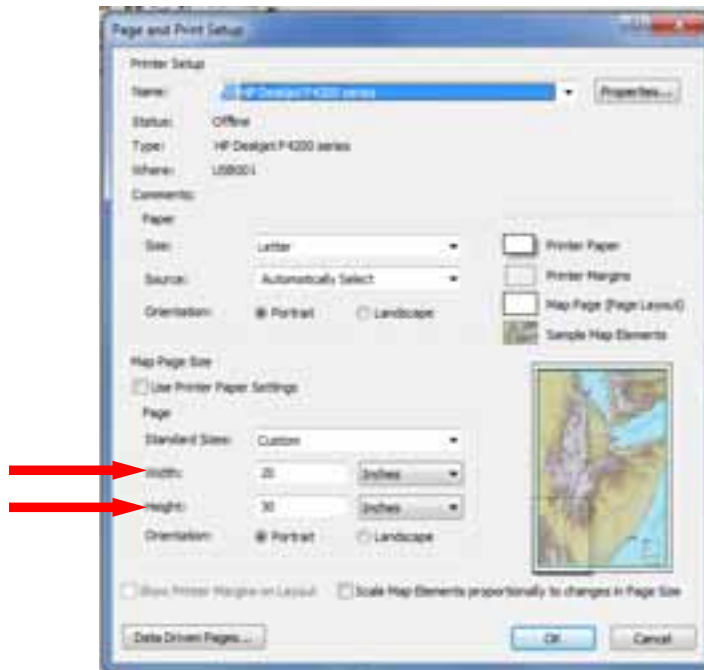


2. Data frames will appear stacked on one another.

## ARE CHILDREN ADOPTION POLICIES IMPACTED BY SAME-SEX MARRIAGES

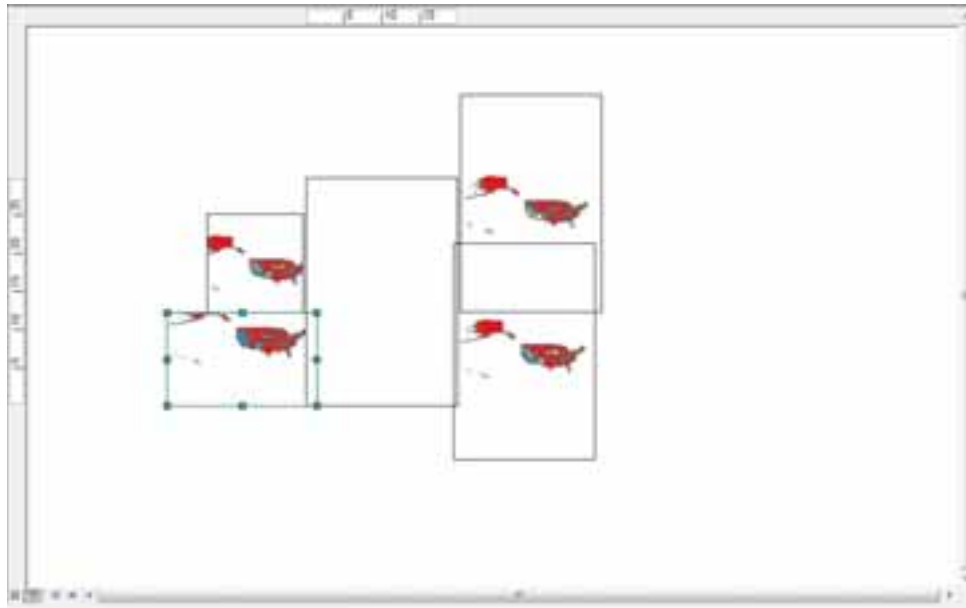


3. Right click anywhere inside the layout and click **Page and Print Setup**.
4. Verify your print settings match these below:

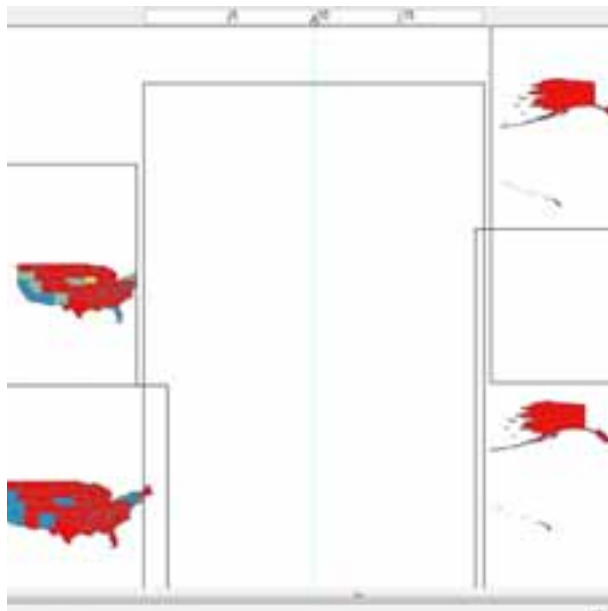


5. Click **OK**.
6. Click each of the data frames, and drag them to the left and to the right of the layout view. Try to chronologically order them according to year (Reference the **Table of Contents**).
7. Resize the data frames by select and moving the handles .

## ARE CHILDREN ADOPTION POLICIES IMPACTED BY SAME-SEX MARRIAGES

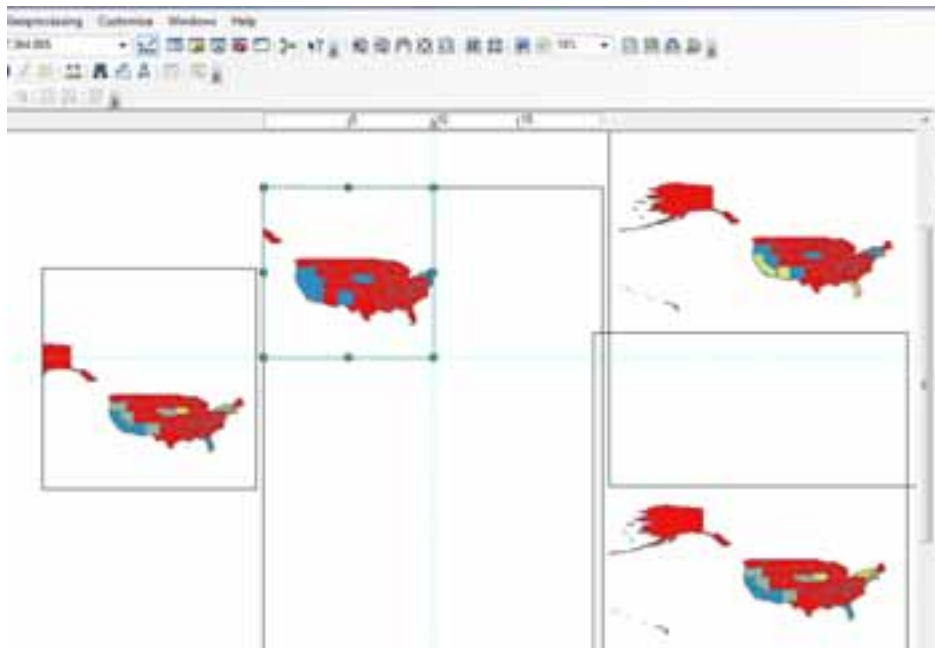


8. Create guidelines to layout map to preference. To begin we will create guidelines dividing the layout evenly into four sections.
  - a. Click at **10** inches on the top horizontal ruler to create a vertical blue guide at that location.

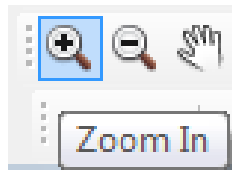


- b. Repeat to create a horizontal guide at **15** inches on the vertical ruler.
    - c. Drag, move and resize data frame **SSMarriage 2004** to the top left section of the layout. The data frame should automatically snap to the blue guides.

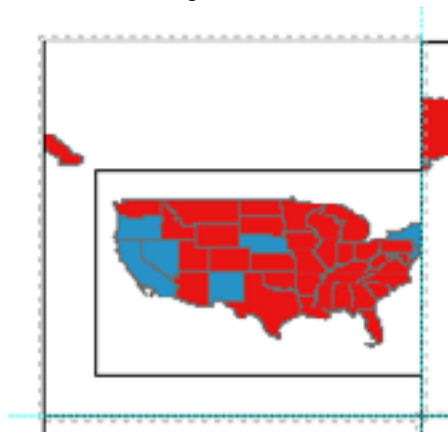
# ARE CHILDREN ADOPTION POLICIES IMPACTED BY SAME-SEX MARRIAGES



- d. Repeat for the remaining data frames.
- 9. Use additional tools to zoom in and out of state territories. In the layout view, we would want to zoom in on the states, not showing Alaska and Hawaii.
  - a. Click the **Zoom In** icon on the tools toolbar.



- b. Drag a rectangle around states to increase the size of the map within its map element rectangle.

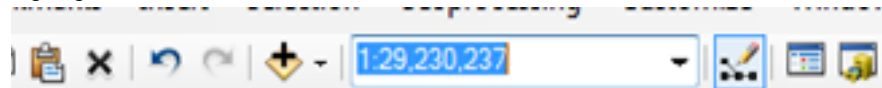


- c. Repeat for all data frames

## ARE CHILDREN ADOPTION POLICIES IMPACTED BY SAME-SEX MARRIAGES



- d. Click data frame **SSMarriage 2004**. We will apply this scale to all of the other data frames.
  - i. On the **Edit** toolbar, locate the scale for this specific data frame. Select to highlight the scale.

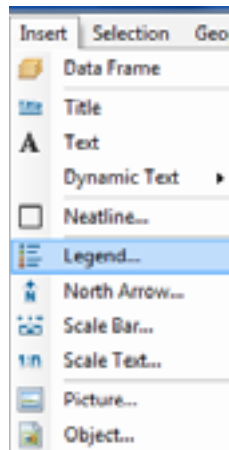


- ii. Press the keyboard short cut keys **ctrl+C** to copy.
  - iii. Select each other data frame and paste, **ctrl+V**, to change their scales.



10. Insert title, legend and scale bar to the map.
  - a. Under **Insert** on the main toolbar, click **Legend**

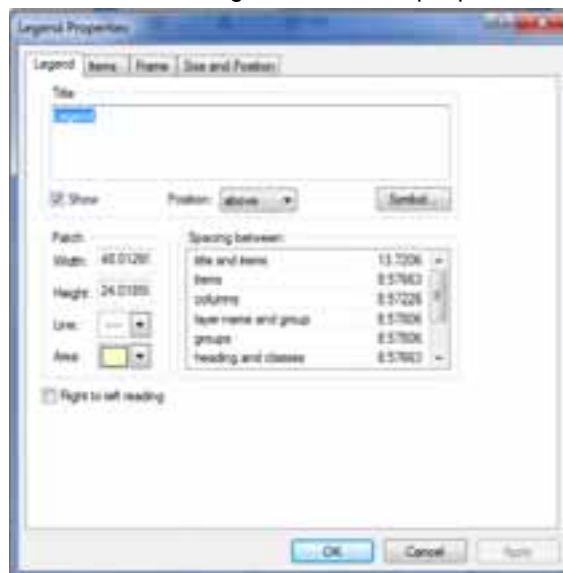
# ARE CHILDREN ADOPTION POLICIES IMPACTED BY SAME-SEX MARRIAGES



- b. When the dialog window appears, click next to import the legend into the map.
- c. Use the **Selection** tool to move the legend to the desired area on the map.

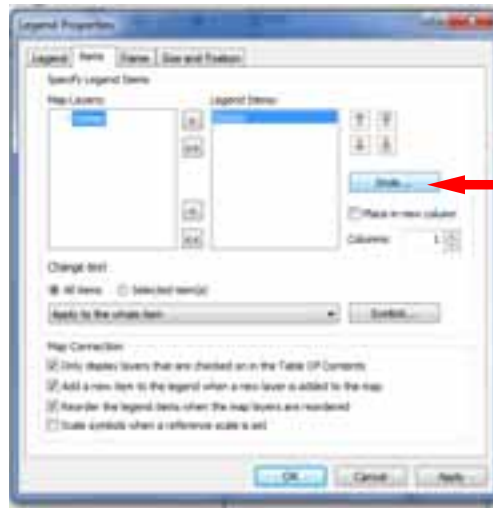


- d. Double click the **Legend** to edit its properties.



## ARE CHILDREN ADOPTION POLICIES IMPACTED BY SAME-SEX MARRIAGES

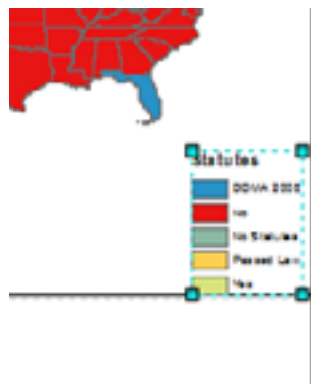
- e. Change the name of the legend under the **Legend** tab by highlighting the default name "Legend" and type **Statutes**.
- f. Click the **Items** tab to change the style of the legend.
- g. Click **Style** button to pull up **Legend Item Selector**.



- h. Choose the style of preference.

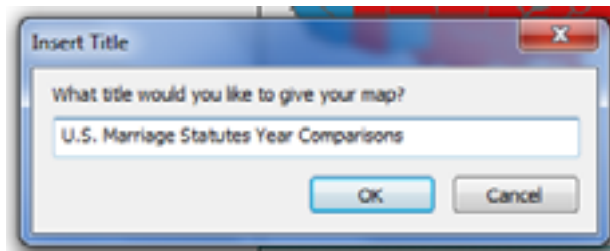


- i. Click **OK** twice. To see the changed properties of the legend.

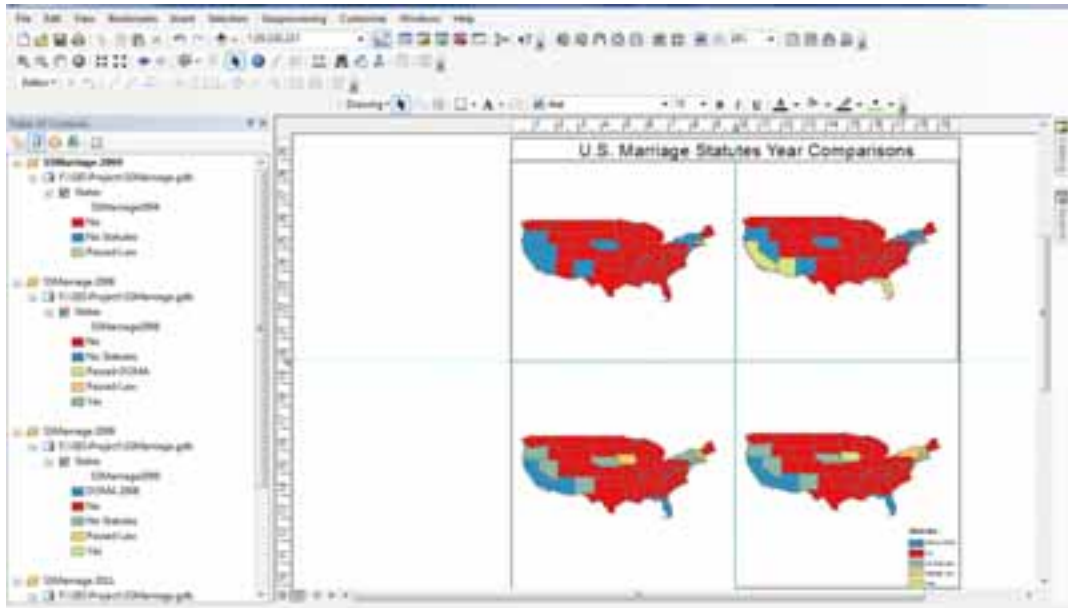


- j. Click **Insert>Title**
- k. The **Insert Title** window will appear, type **U.S. Statutes Year Comparisons**.

## ARE CHILDREN ADOPTION POLICIES IMPACTED BY SAME-SEX MARRIAGES



- l. Click **OK**.
- m. Move the title location to the top of the maps.



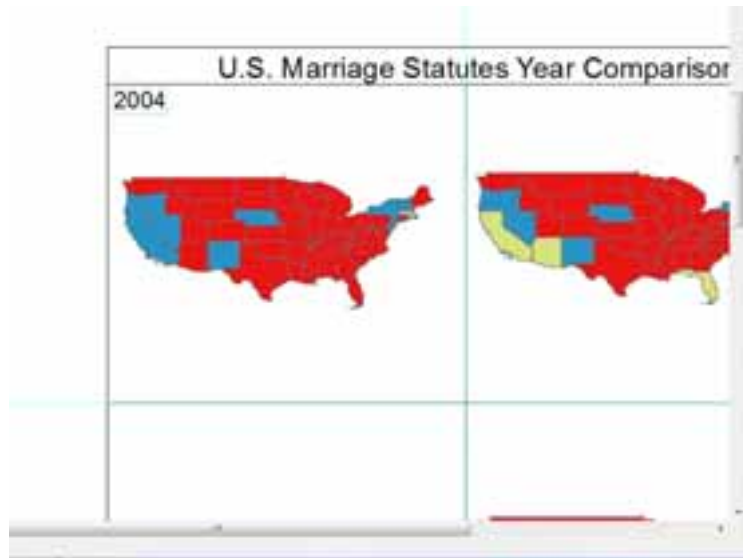
- n. Add titles to each map to specify the year each map represents. Click **Insert>Text**
- o. A text box will appear. Double click the text box and type **2004**.



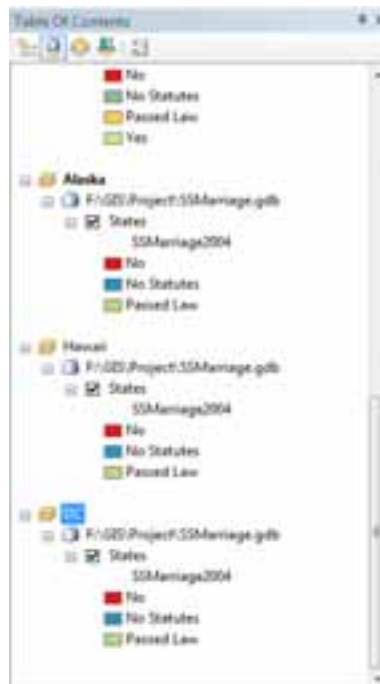
- p. Click **Change Symbol** to edit the size of the text to 48.
- q. Click **OK**.
- r. Position the text in the upper left map.



## ARE CHILDREN ADOPTION POLICIES IMPACTED BY SAME-SEX MARRIAGES

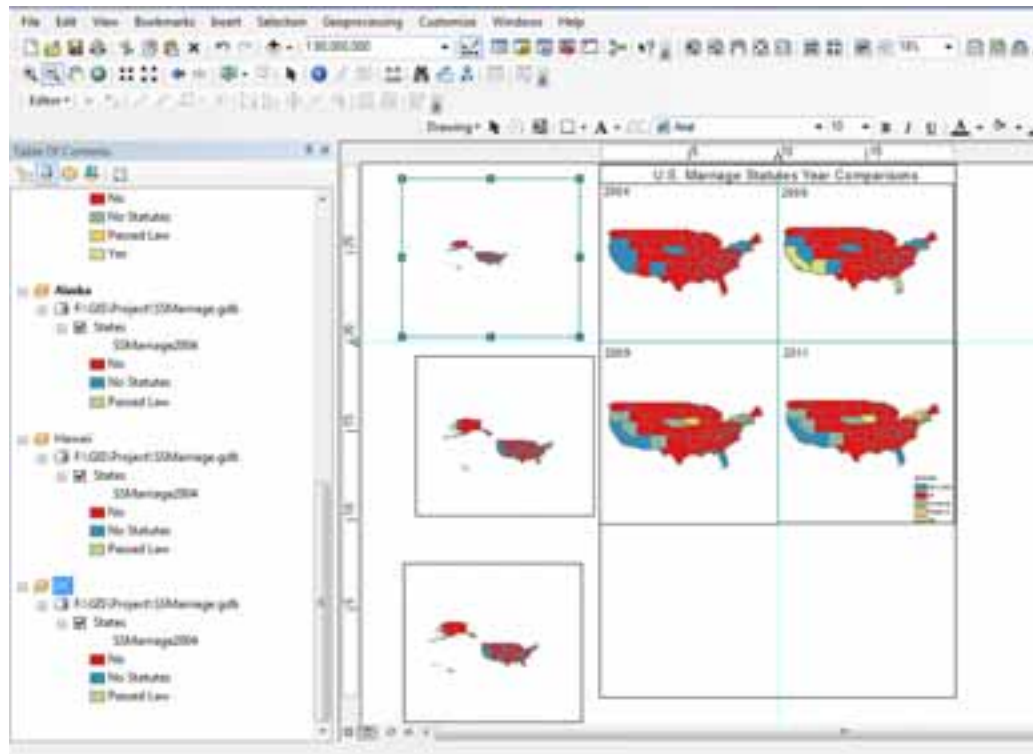


- s. Repeat to add year titles to the remaining maps: **2008, 2009, 2011**.
- 11. Create inserts on map layout for Alaska, Hawaii and DC
  - a. Copy and paste **SSMarriage 2004**, data frame three times for each U.S. territory.
  - b. Rename each new data frame: **Alaska, Hawaii and DC**.

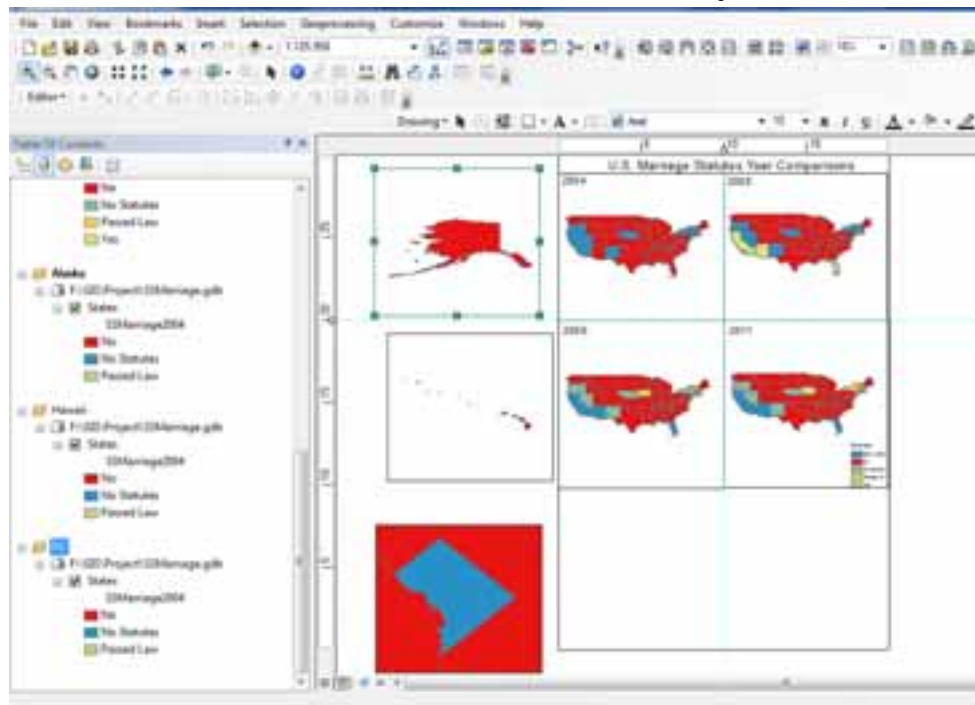


- c. Move the data frames to the left side and zoom out to view all U.S. territories.

# ARE CHILDREN ADOPTION POLICIES IMPACTED BY SAME-SEX MARRIAGES



d. Zoom in on each data frame to create a view of that territory.



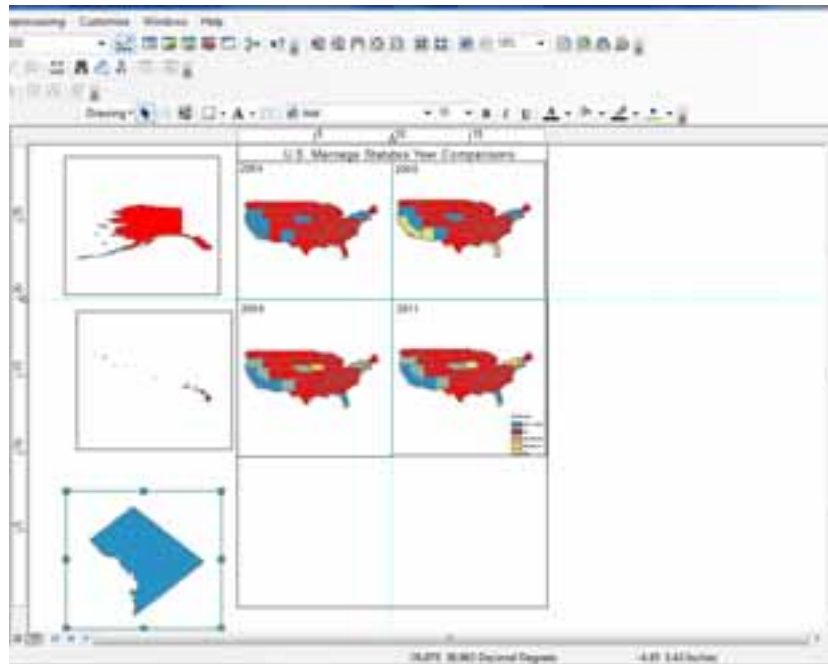
e. In the DC data frame, change the colors to only highlight DC.

- i. Right double click **No** symbol to change the fill color to **No Color** and outline color to **No Color**.

## ARE CHILDREN ADOPTION POLICIES IMPACTED BY SAME-SEX MARRIAGES



- ii. Click OK
- iii. DC is highlighted alone in layout view.



- iv. Position the data frames: **Alaska, Hawaii and DC** in their perspective positions on the map. Use the tools: **Zoom In, Zoom Out, and Pan** to assist with positioning. Make map similar to the following.

## ARE CHILDREN ADOPTION POLICIES IMPACTED BY SAME-SEX MARRIAGES

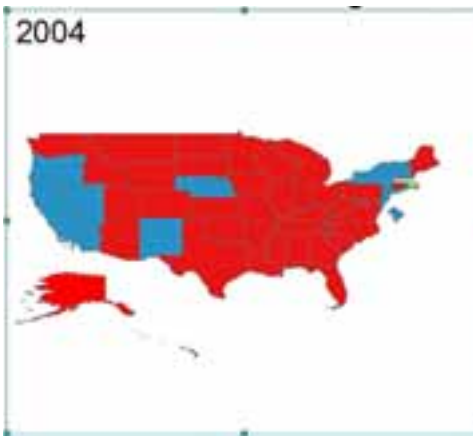
2004



- v. DC and Alaska has black borders around each data frame, to remove borders right click each data frame navigate to **Properties**. Scroll up in to border drop down menu, click **None**.



- vi. Click OK.



12. Save document as **SSMarriage Year Comparisons**.