

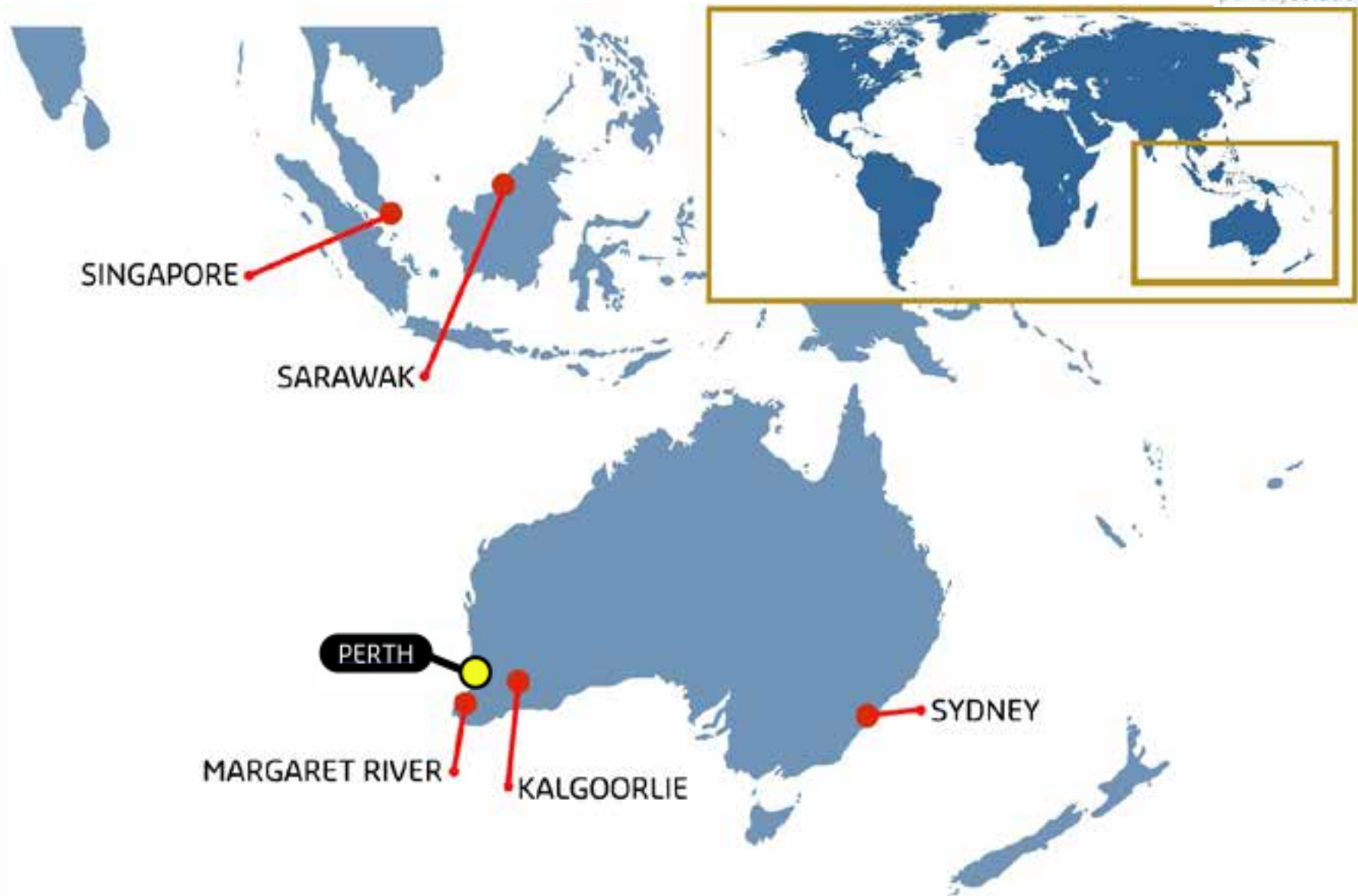
Implementing a Security Operations GIS at Curtin University

Curtin University

Stu Rich, CTO, PenBay Solutions

Brian Woodman, Program Manager, Business & Technology Solutions,
Curtin University, July 16, 2014

CURTIN UNIVERSITY



CURTIN UNIVERSITY: HISTORY



1966 WAIT OPENS



CURTIN UNIVERSITY: HISTORY



1987

WAIT BECOMES CURTIN
UNIVERSITY OF TECHNOLOGY



CURTIN UNIVERSITY



2010

WAIT BECOMES CURTIN
UNIVERSITY OF TECHNOLOGY



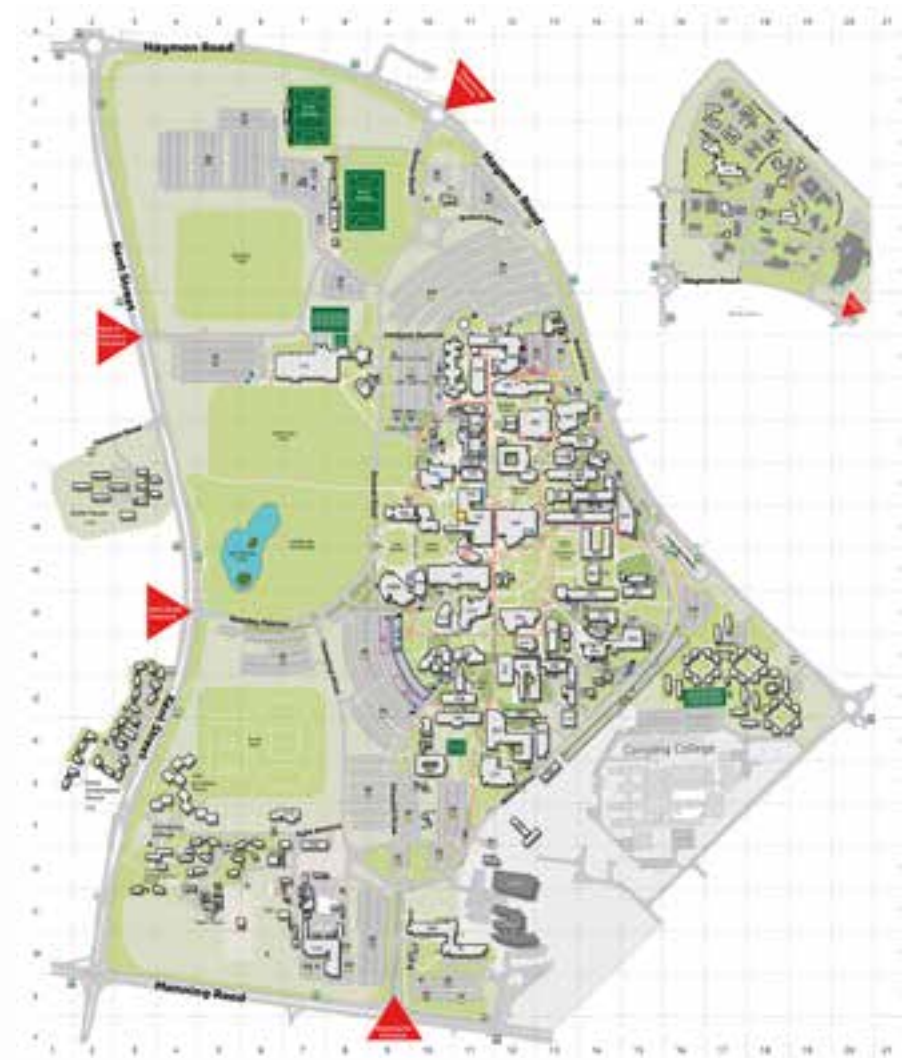
CURTIN UNIVERSITY: STATISTICS



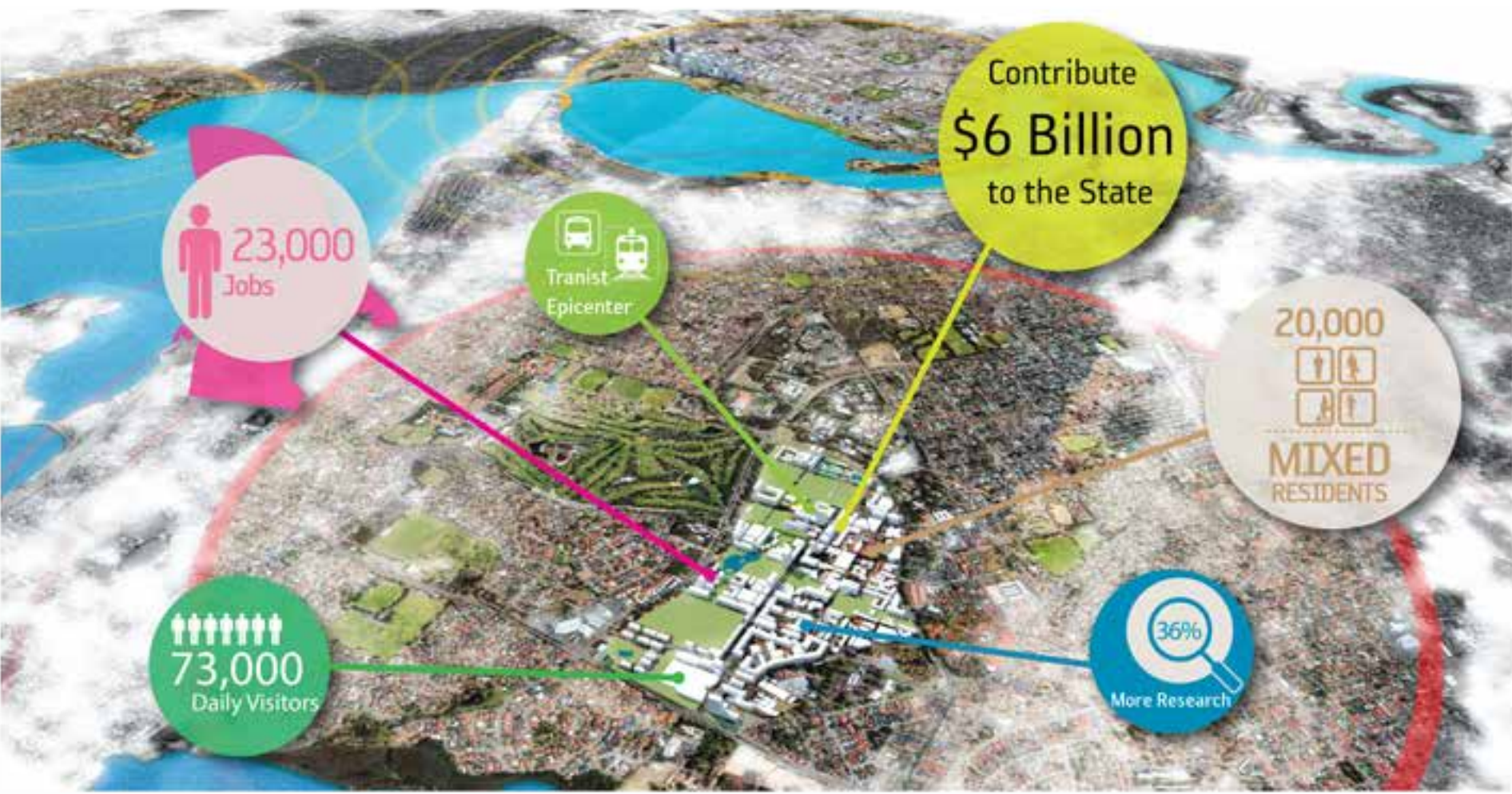
2013

REVENUE \$750m
ASSETS \$2.1b
STAFF 3,500
STUDENTS 50,000
DIRECT EARNINGS \$160m

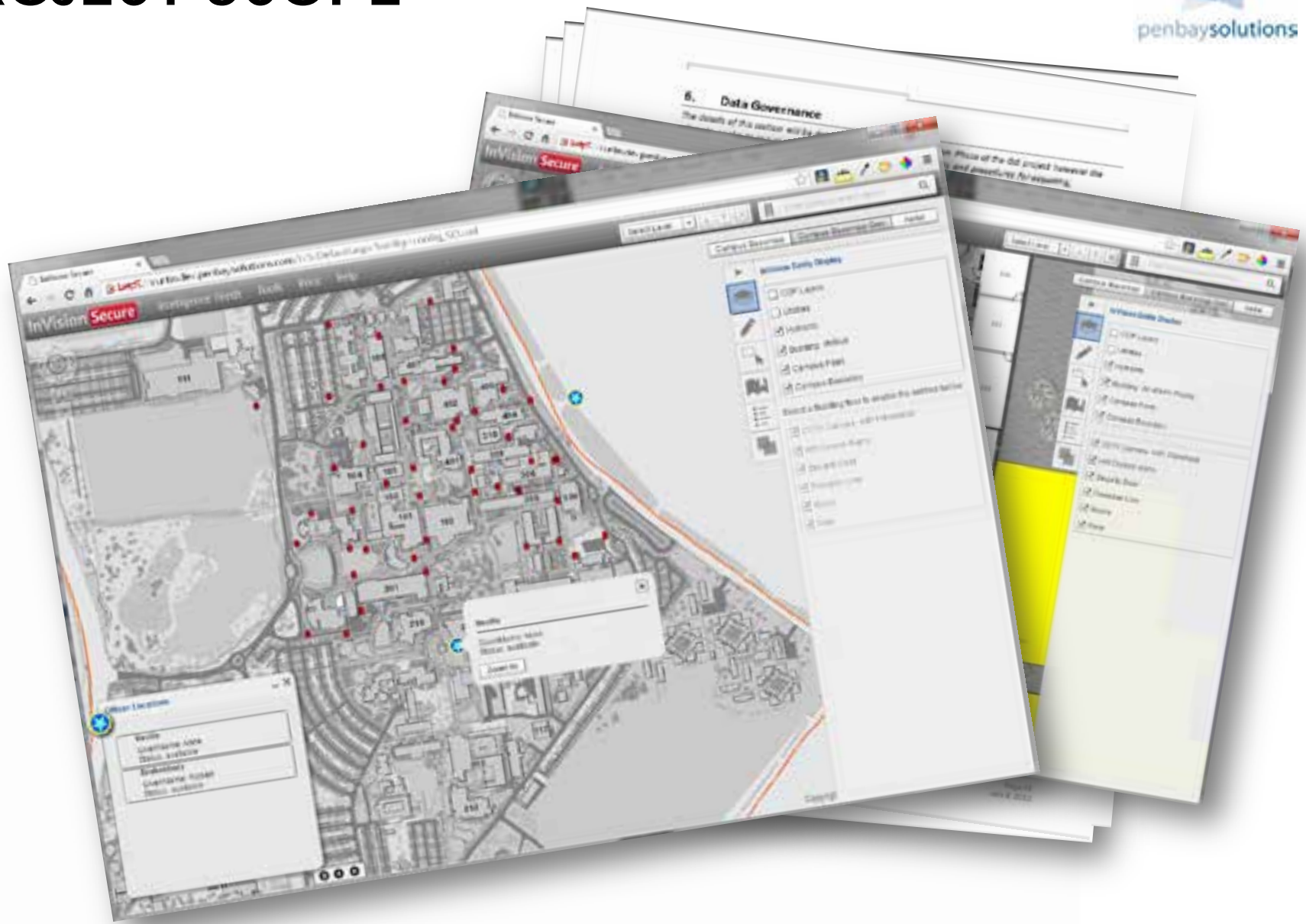
BENTLEY CAMPUS SIZE 144 ha (281 acres)
BUILDINGS 214
GROSS FLOOR AREA 2,845,062 ft²
USABLE FOOR AREA 1,869,368 ft²



THE FUTURE: A GREATER CURTIN



PROJECT SCOPE

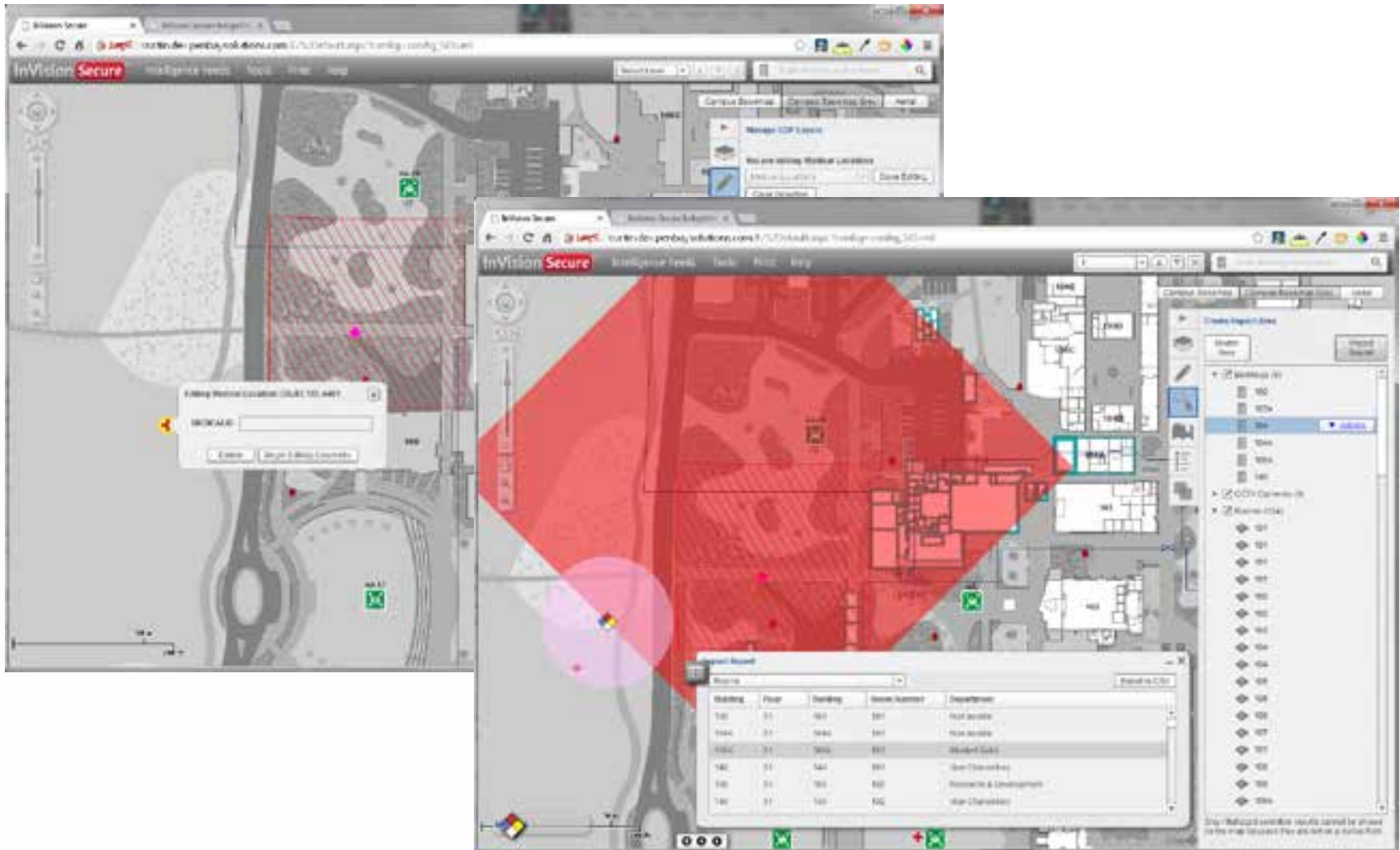


SOLUTION | DATA ENHANCEMENT



The image displays two overlapping software interfaces. The background interface is a network diagram showing a complex hierarchy of nodes and connections, with different sections highlighted in green, purple, and red. The foreground interface is the InVision Secure web application, which shows a floor plan of a building with various rooms and corridors. A red shaded area on the floor plan indicates a camera's field of view. A yellow shaded area highlights a specific section of the building. A pop-up window provides details for a camera: 'CC TV Camera 16 30 3 888', 'IP Address: 16.30.3.888', 'Camera Type: IP Camera', 'Resolution: 1080p', and 'View Angle: 32'. A sidebar on the right lists various camera settings and options, such as 'CC TV Camera 16 30 3 888', 'IP Address', 'Camera Type', 'Resolution', 'View Angle', and 'View'. The InVision Secure logo and navigation menu are visible at the top of the foreground interface.

SOLUTION | IMPLEMENTATION



The image displays two screenshots of the InVision Secure software interface, illustrating the implementation of a location-based security solution.

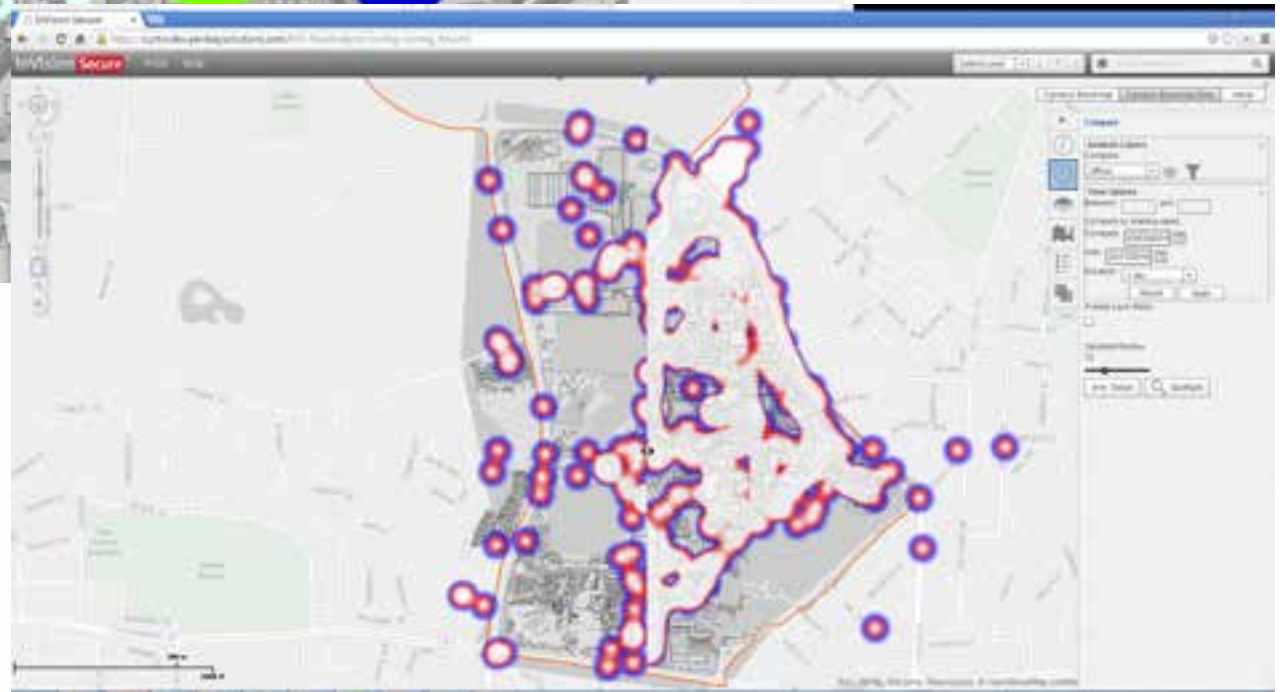
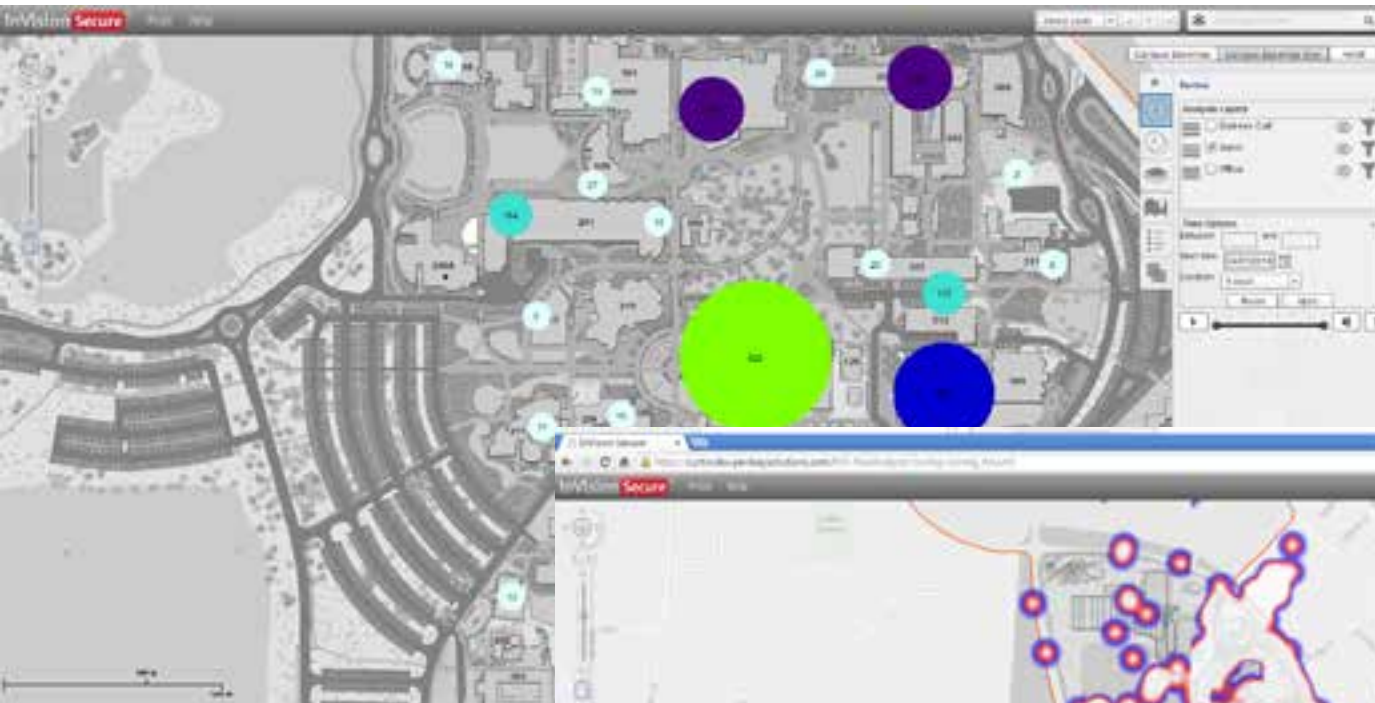
The left screenshot shows a map view with a red hatched area indicating a specific location. A dialog box titled "Map Marker Location (COLLECTOR.MKT)" is open, showing a "MARKER" field and buttons for "Enter" and "Cancel & Close Location".

The right screenshot shows a more detailed map view with a large red polygon and a pink circle. A dialog box titled "Map Marker" is open, displaying a table of marker data:

Building	Floor	Building	Room Number	Department
100	01	101	101	Post Office
104	01	104	101	Post Office
100	01	100	101	Student Guild
100	01	101	101	User Technology
100	01	101	101	Research & Development
100	01	101	101	User Technology

The right screenshot also shows a sidebar with a list of locations and a "Map Marker" button. A note at the bottom right states: "Note: Reduced resolution results cannot be shown in the map browser. For details see a manual page."

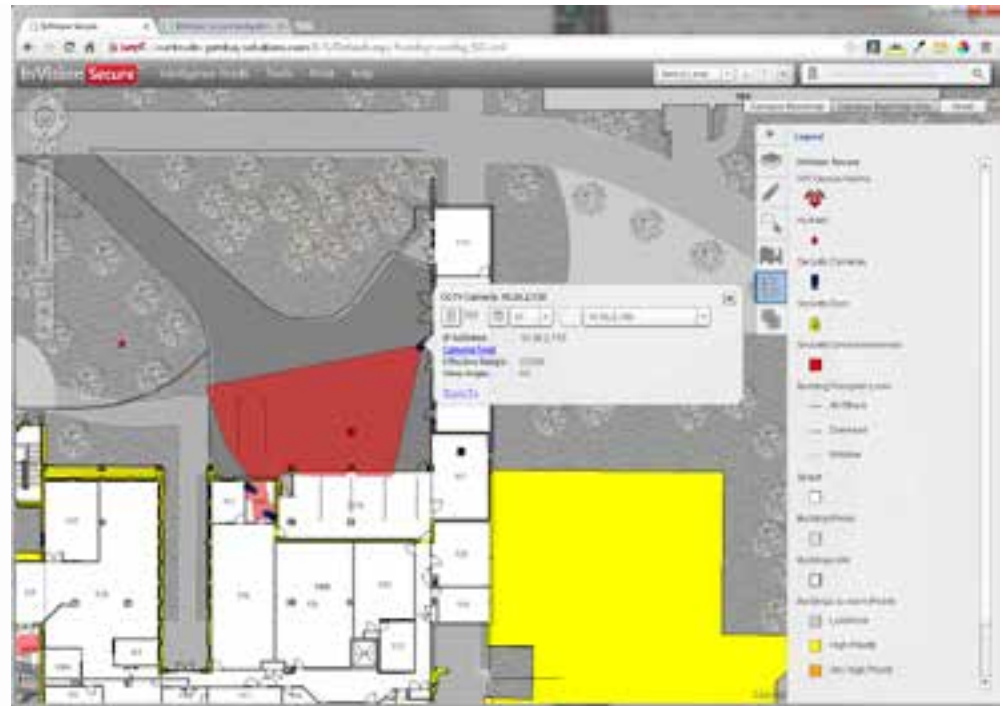
SOLUTION | HISTORIC ANALYSIS



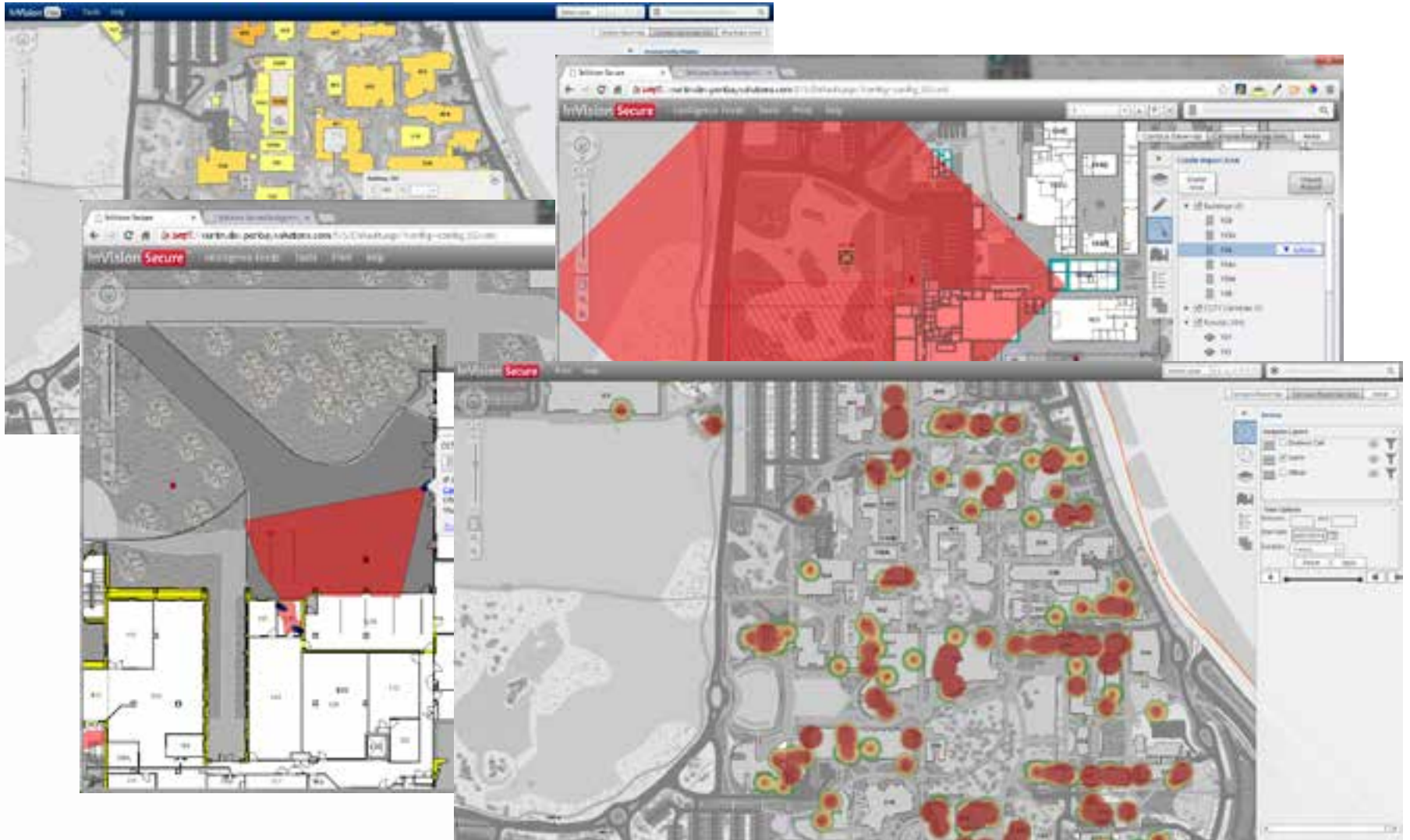
SOLUTION | INTEGRATION



- Building Alarms
 - *Gallagher Command Center*
- CCTV Cameras
 - *Indigo Vision*
- Officer Locations
 - *Safe Zone*
- Duress Alarms
 - *Safe Zone*



SOLUTION | BUSINESS VALUE



Questions?

srich@penbaysolutions.com



**“The
Great University...
should look ever
forward; for it, the past
should be but a preparation
of the greater days to be.”**