



Department of Information Technology - GIS

Measuring Accessibility to Public Transit in Pasadena, CA

Jonathan K. Robinson

Kayla Folkins





City of Pasadena, CA

Department of Information Technology - GIS



- Located in Los Angeles County, CA
- Home to the Rose Bowl, Rose Parade, NASA's Jet Propulsion Lab, CalTech, and many historic home and neighborhoods
- 23.5 Sq Mi. with 138,000 residents
- 6 Light Rail Stations



PASADENA



Reviewing TOD Standards

Department of Information Technology - GIS

What are the impacts of changing the criteria of Transit Oriented Development (TOD) Parking Standards?



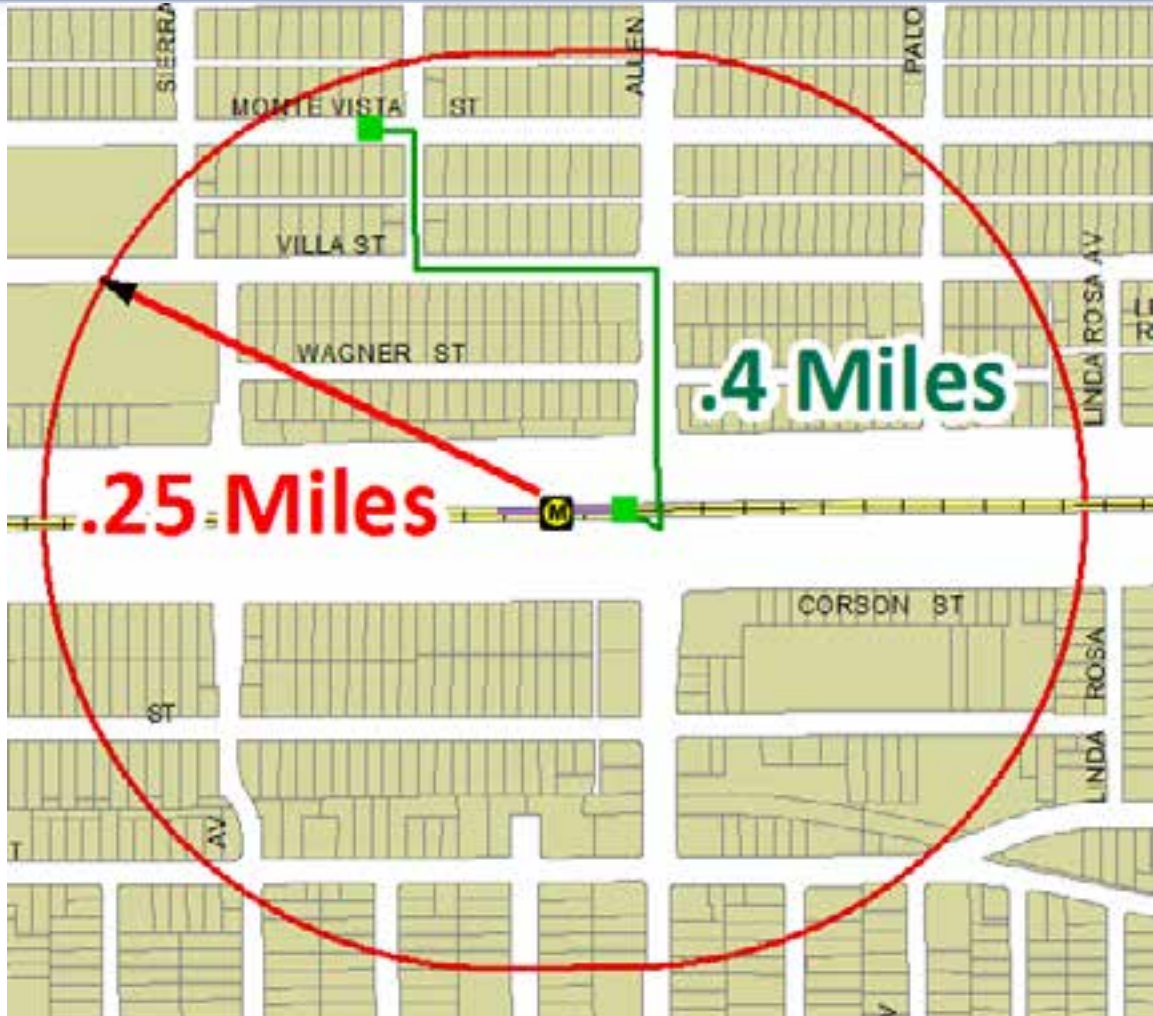
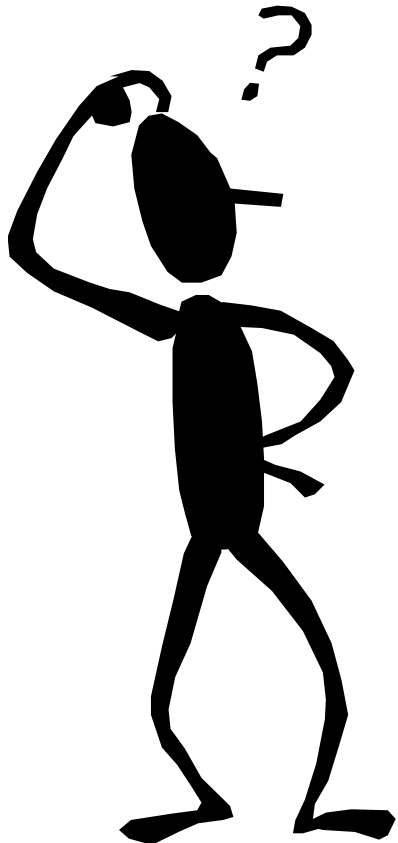
PASADENA



TOD Parking Standards Criteria: Accessibility to Transit

Department of Information Technology - GIS

How to measure
Transit accessibility?





Accessibility Analysis - Basic Steps

Department of Information Technology - GIS

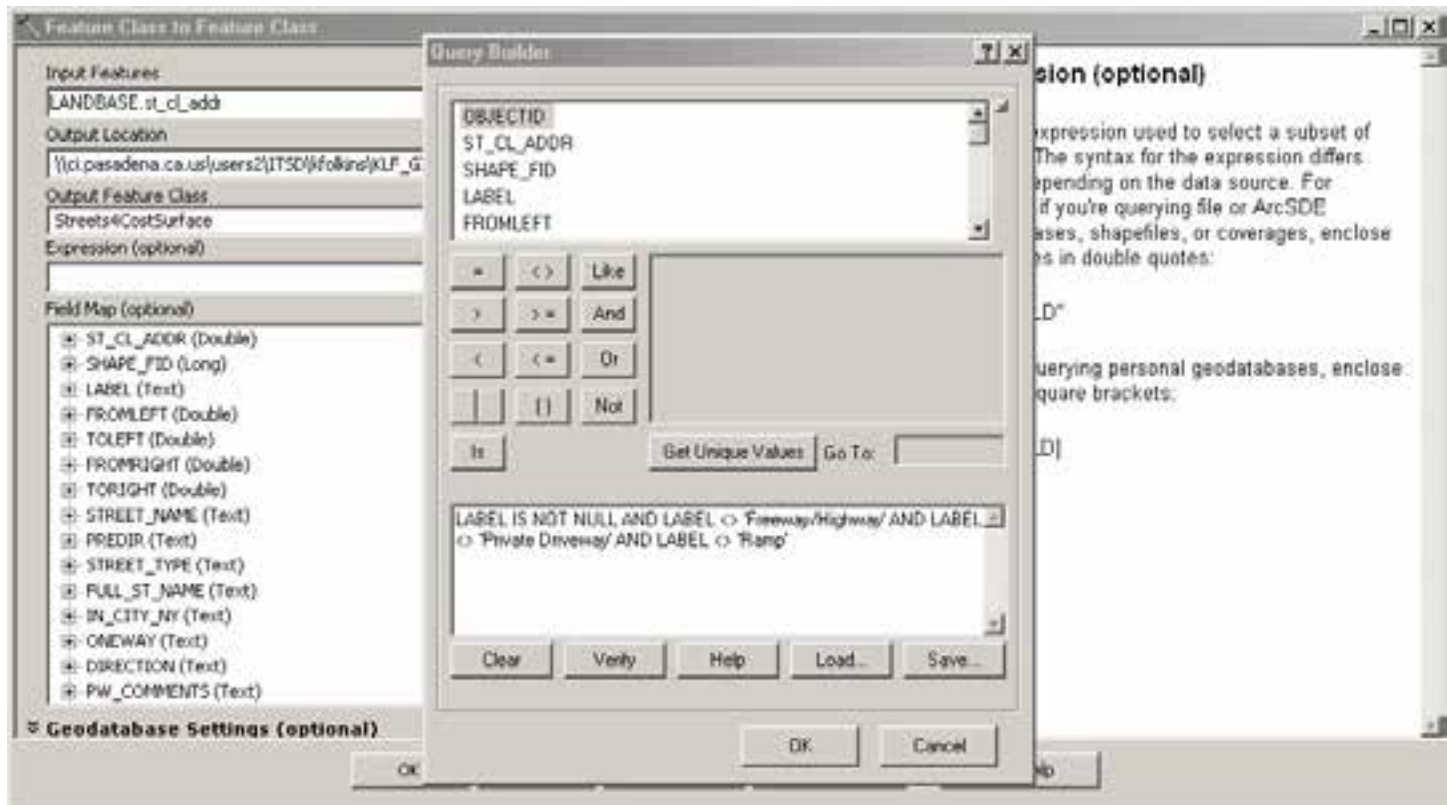
- **Prepare Data**
 - > Street Network, Destination Points
- **Perform Analysis**
 - > Create Cost Surface –
 - § Euclidean Distance (tool), Reclassify (tool)
 - > Perform Cost Distance (tool)
 - > Convert Final Analysis Raster to Polygon
 - § Reclassify, Covert to Polygon



Prepare Data

Department of Information Technology - GIS

- Street Network





Prepare Data

Department of Information Technology - GIS

- Destination Point Layer



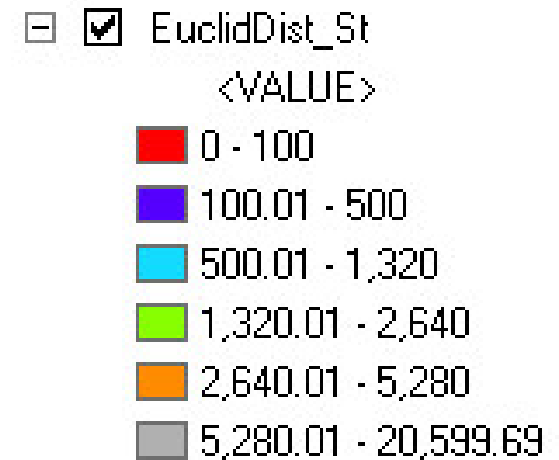
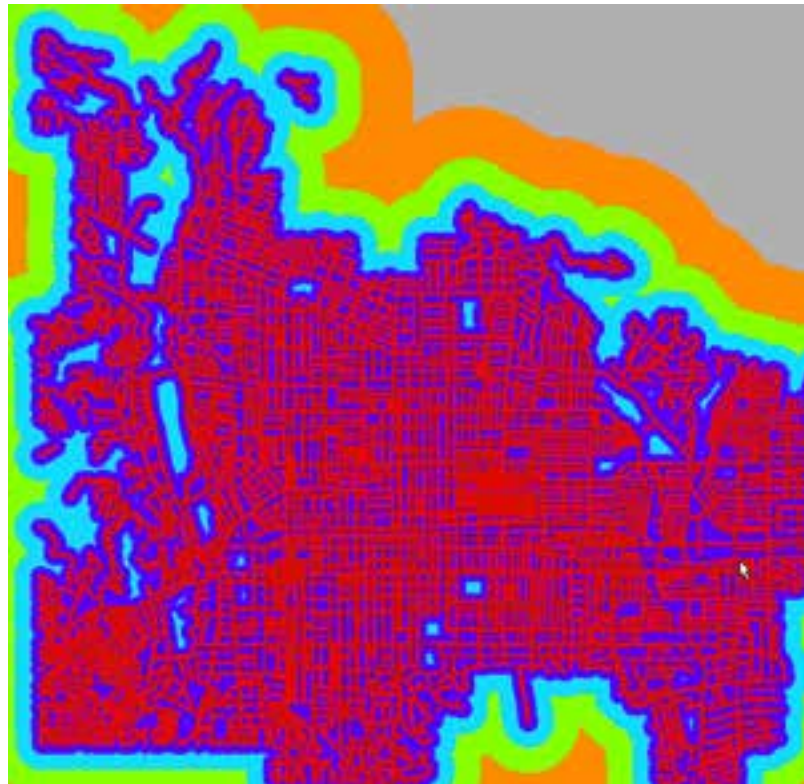
PASADENA



Create Cost Surface

Department of Information Technology - GIS

- Euclidean Distance
 - > 30 ft cell size gives good result





Create Cost Surface

Department of Information Technology - GIS

- **Reclassify**

- > Assigns a value, or cost, of travel to each cell

- ReClass**
- 1 / 100 Feet
- 2 / 500 Feet
- 3 / Qtr Mile
- 4 / Half Mile
- 5 / 1 Mile
- 6 / Over 1 Mile

Reclassification

Old values	New values
0 - 100	1
100 - 500	2
500 - 1320	3
1320 - 2640	4
2640 - 5280	5
5280 - 20599.691406	6
NoData	NoData

Buttons: Classify..., Unique, Add Entry, Delete Entries, Load..., Save..., Reverse New Values, Precision...



Perform Cost Distance

Department of Information Technology - GIS

- Final Analysis: Merging

	1	1			
		1			
2					

Source_Ras

1	3	4	4	3	2
7	3	2	6	4	6
5	8	7	5	6	6
1	4	5		5	1
4	7	5		2	6
1	2	2	1	3	4

Cost_Ras

=

2.0	0.0	0.0	4.0	7.5	10.0
6.0	2.5	0.0	4.0	9.0	13.9
8.0	7.1	4.5	5.0	10.5	12.7
5.0	7.5	10.5		10.8	9.2
2.5	5.7	6.5		7.1	11.1
0.0	1.5	3.5	5.0	7.0	10.5

Cost_Dist

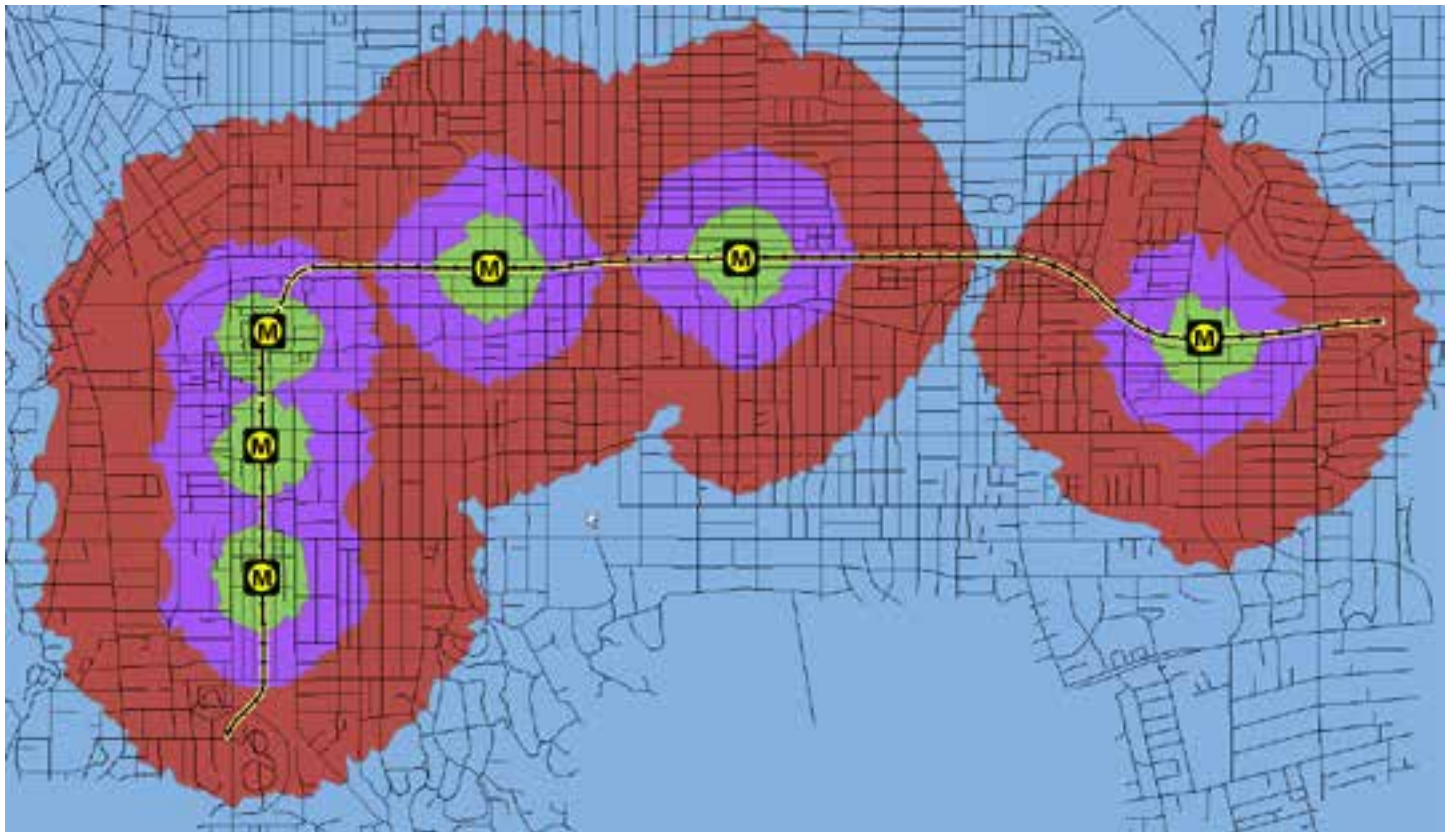
Value = NoData



Convert Analysis Raster to Polygon

Department of Information Technology - GIS

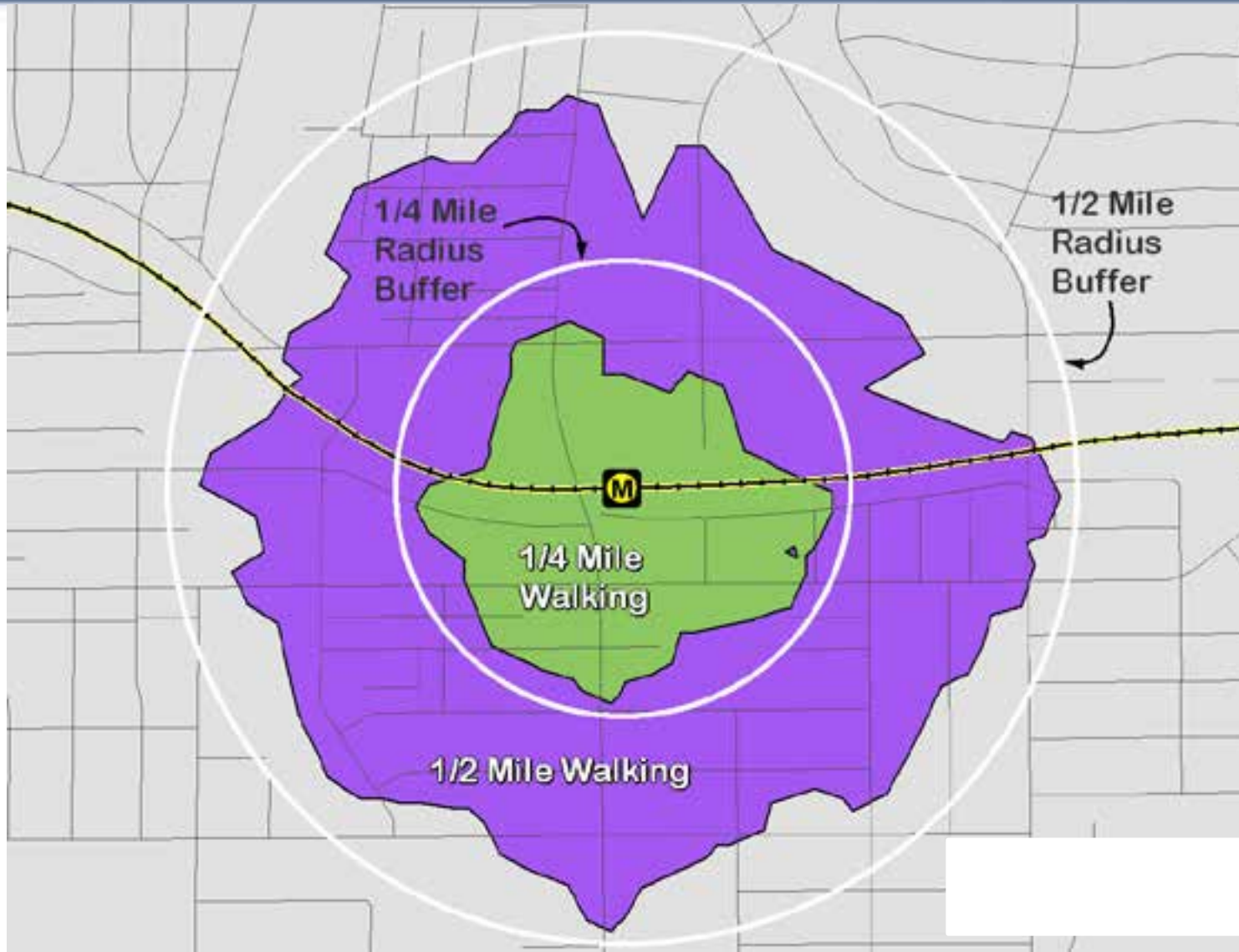
- Reclassify, Convert to Polygon





Final Analysis - Buffer Comparison

Department of Information Technology - GIS





Next Steps, Lessons Learned

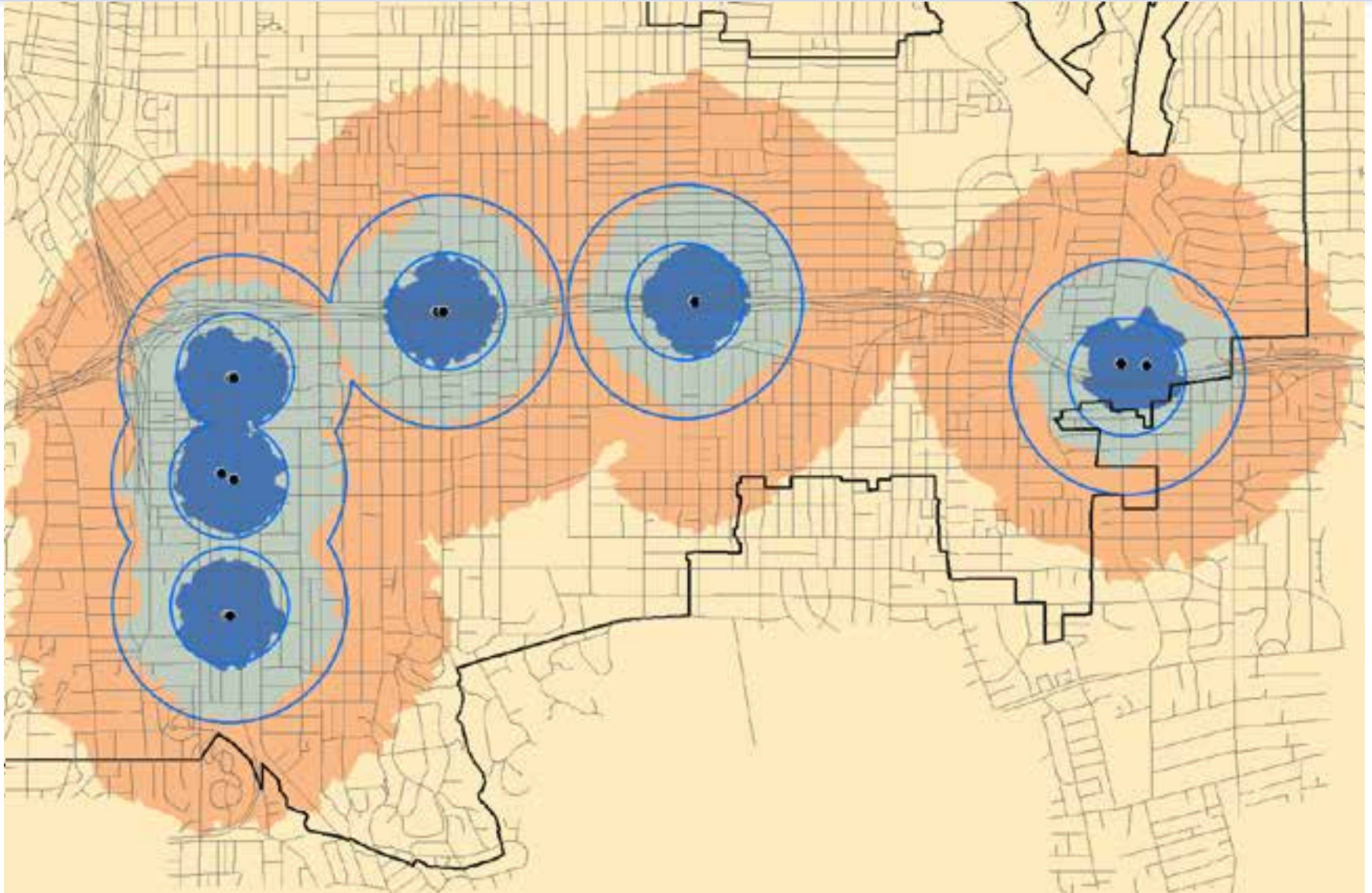
Department of Information Technology - GIS

- Build model for automation
- Developing true Pedestrian Network
- Refining Destination points: i.e. multiple entrances



Alternate Analysis

Department of Information Technology - GIS





Special Thanks To.....

Department of Information Technology - GIS

- Scott Reimers – City of Pasadena Planning Dept.
- Rhonda Glennon – ESRI:
 - > <http://blogs.esri.com/esri/arcgis/2011/06/30/park-analysis-and-design/>



Measuring Accessibility to Public Transit in Pasadena, CA

Department of Information Technology - GIS

Questions?