

MAPPING BIKEWAYS IN LA COUNTY

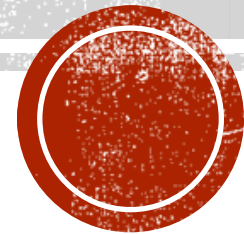
COLLABORATION THROUGH GIS

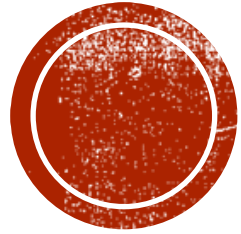
Mark Greninger

Geographic Information Officer

Los Angeles County

CCISDA Fall 2013





BIKE PATH MANAGEMENT

The new frontier

THE ISSUE

§ Goals

- § Collaboratively plan, manage and access bike infrastructure across the County.
 - § 88 cities, many stakeholders
- § Support the multiple business functions needed to succeed
- § Multi-device support

§ Functions

- § Public Access
- § Planning
- § Management
- § Public Input

§ The Technology

- § ESRI ArcGIS Server
- § Latitude Geographics Geocortex Essentials

§ Development

- § < 1 week so far

§ <http://egis3.lacounty.gov/eGIS/la-regional-gis-forum/bike-path-map-project/>



OVERVIEW



Dashboard



Viewer



Repository



Comments

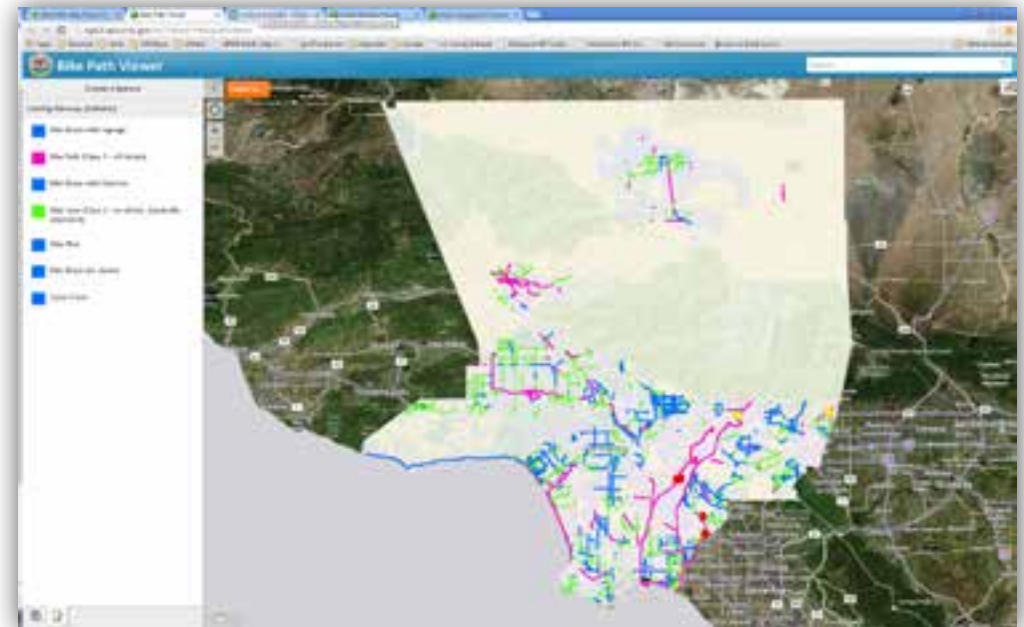
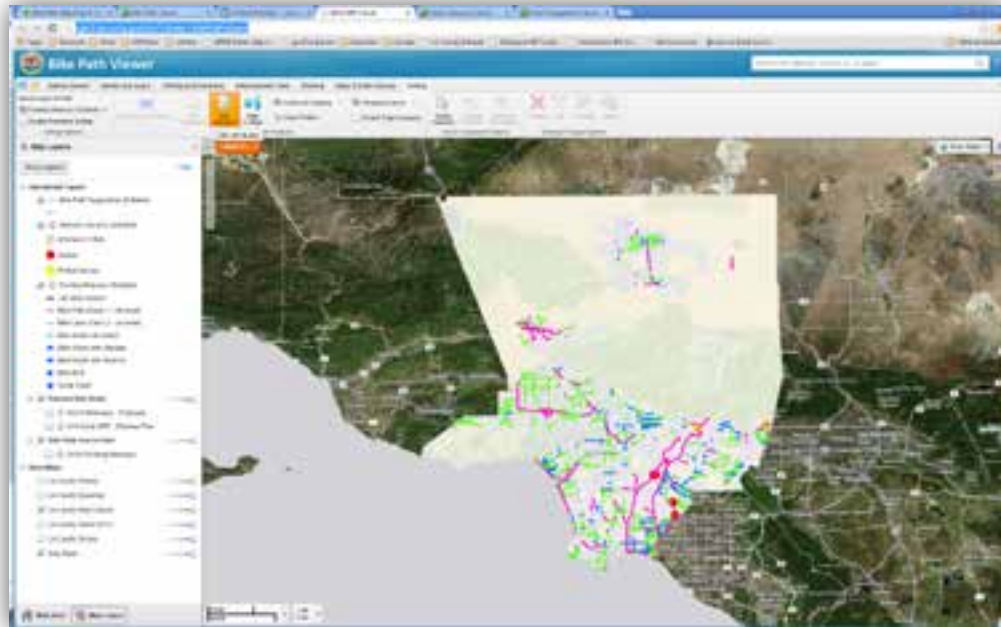


DASHBOARD

- § Password Protected
- § Desktop Only Version (fully featured)
 - § Authoritative sources can update the information via web-based tools.
 - § We can add any reference data necessary
 - § <http://egis3.lacounty.gov/slv/?Viewer=BikeWayEditor>
- § Mobile-aware version (desktop/tablet/handheld)
 - § <http://egis3.lacounty.gov/m/?viewer=BikePathViewer>
 - § Can edit in place.
 - § Embeddable!
- § Instantly sees suggestions and comments



BIKE PATH DASHBOARD

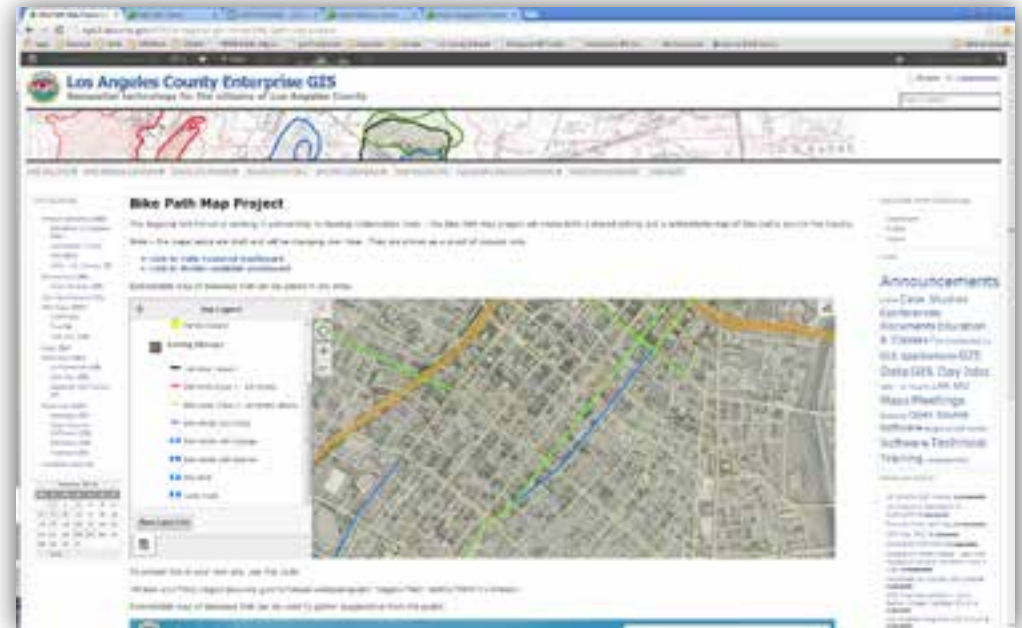
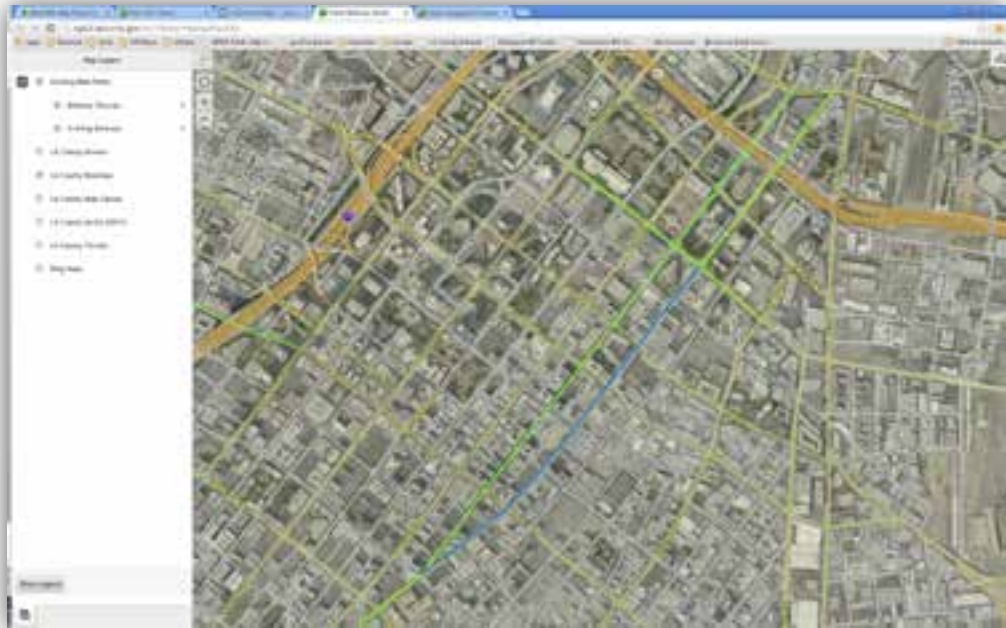


BIKE PATH VIEWER

- § Instantly reflects changes made in the dashboard
- § Public
- § Mobile-aware version (desktop/tablet/handheld)
 - § <http://egis3.lacounty.gov/m/?viewer=bikepathpublic>
 - § Embed into any website with one line of code:
 - § `<iframe src="http://egis3.lacounty.gov/m/?viewer=bikepathpublic" height="500" width="95%"></iframe>`
- § This is powerful – one map can be leveraged many times
 - § Any agency/group with an interest, including bike coalitions, for example.



BIKE PATH VIEWER



BIKE PATH SUGGESTIONS

§ Public editing

§ Mobile-aware version (desktop/tablet/handheld)

§ <http://egis3.lacounty.gov/m/?viewer=bikepathsuggestions>

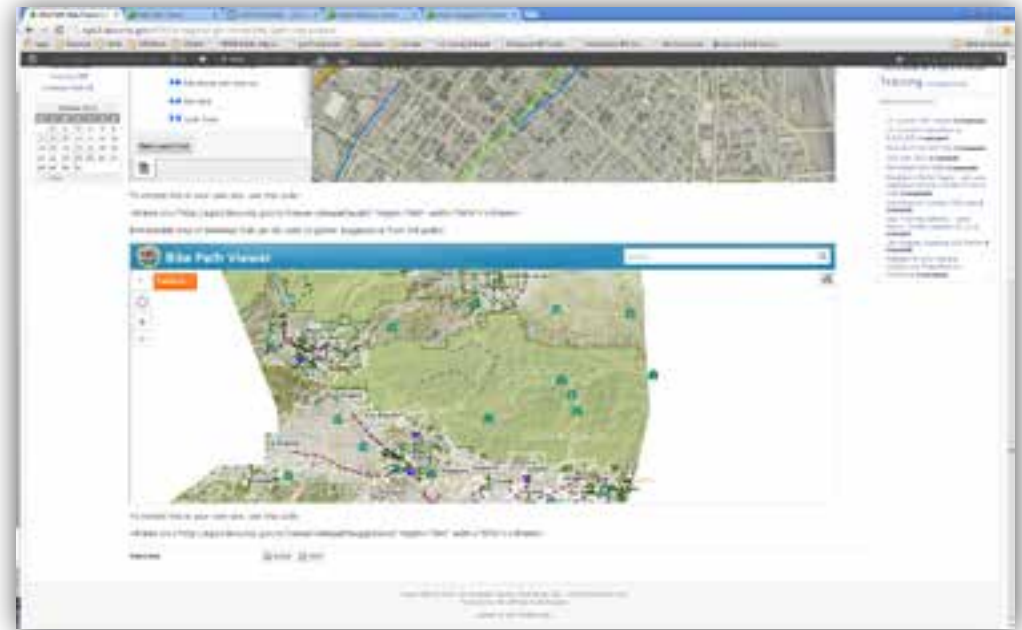
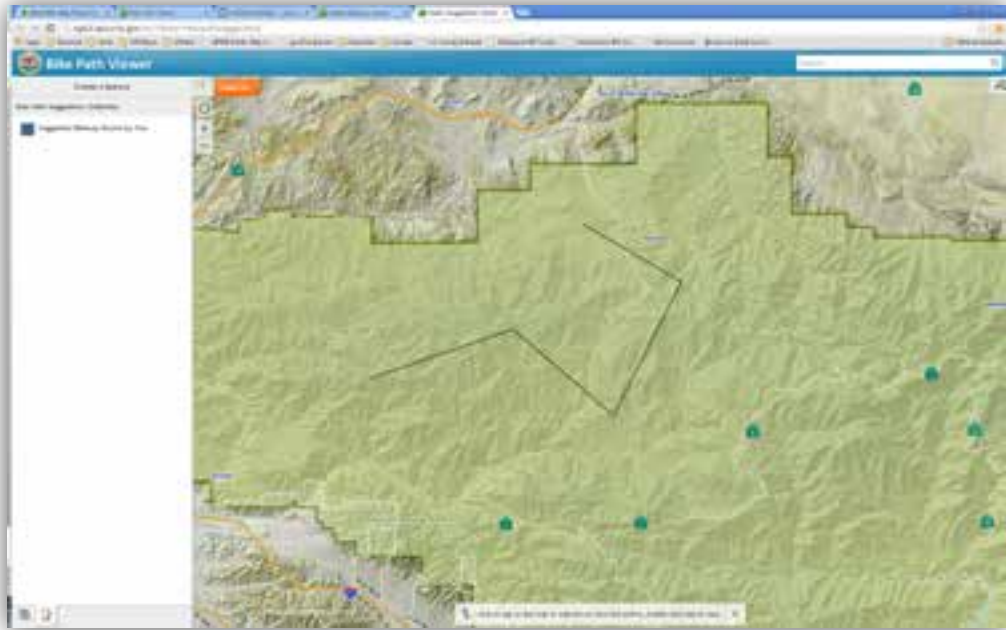
§ Embed into any website with one line of code:

§ `<iframe src="http://egis3.lacounty.gov/m/?viewer=bikepathsuggestions" height="500" width="95%"></iframe>`

§ Allows suggestions to be added



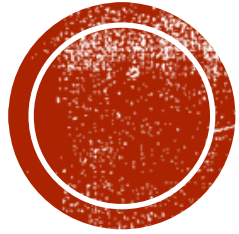
BIKE PATH SUGGESTIONS



SUMMARY

- § Integrated suite of applications
- § Rapid application development
- § Multiple deployment platforms
- § No custom coding
- § Future
 - § Uploading pictures, etc.
- § Framework for collaborative information management, with public input.
 - § Service Locators
 - § Disaster Management and Reporting
 - § Environmental Health
 - § Inspections and Violations
 - § Any agency with field staff!





THANK YOU!

Mark Greninger

mgreninger@cio.lacounty.gov

(213) 253-5624