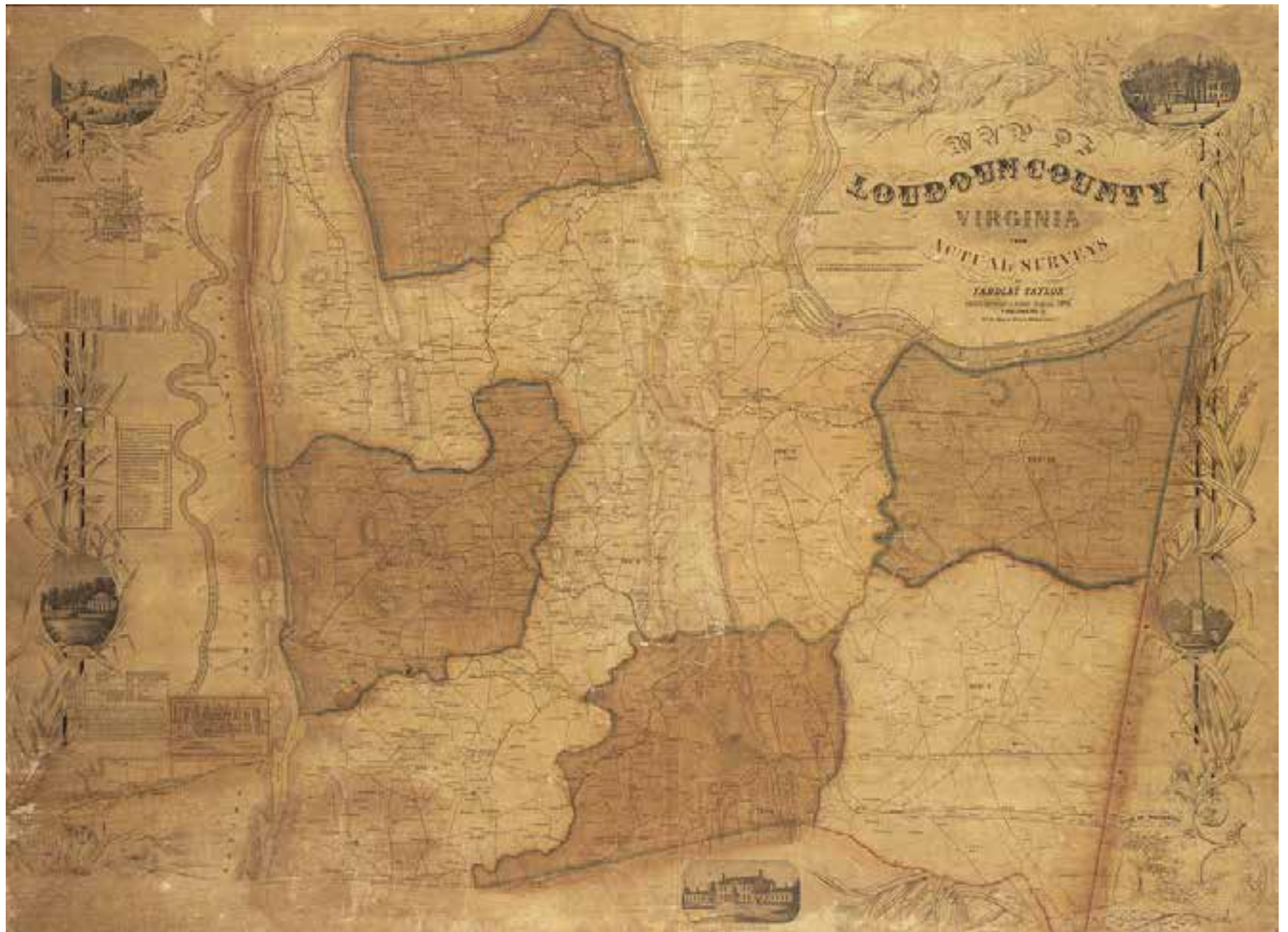


Loudoun County, Virginia
The Use of GIS in Developing
a Conservation Easement
Stewardship Program





Yardley Taylor, 1853



Leesburg 1937



Leesburg 2013



Sunset Hills Winery



Wheatland Farm



Apples, please?



Washington Dulles International Airport

What is a Conservation Easement?

- Restricts the use or development of real property
- Retains, protects, and preserves resources
- Permanently recorded in the land records

Virginia Open-Space Easement Act (public bodies)

Virginia Conservation Easement Act (private bodies)

<http://www.dcr.virginia.gov/>



- [Documents & Development Forms](#)
- [Events](#)
- [Loudoun County Store](#)
- [Maps & Data](#)
- [Online Mapping Services](#)

[Home](#) > [Government](#) > [County Departments](#) > [Departments H-Z](#) > [Mapping & Geographic Information](#)

Mapping & Geographic Information

Overview

The Loudoun County Office of Mapping and Geographic Information is responsible for maintaining the core components of the county's Geographic Information System (GIS), the computerized mapping system. The office provides internal data, mapping, and analytical services to county agencies and provides services to the public through web-based mapping and at the office's Public Information Counter.

What is a GIS?

A GIS is a computer system for management, analysis, and display of geographic knowledge. It can produce information that answers specific questions and allows you to share that information with others. By visualizing relationships, connections, and patterns in data, you can make informed decisions and increase efficiency throughout an organization.

GIS Adoption

Loudoun County was an early adopter of GIS, purchasing software from [Eart](#), the GIS software company, in 1988. Today the county operates a distributed GIS that is integrated with the county's other information systems. A distributed system is one for which responsibility for data maintenance and analysis is shared among several departments.

Responsibilities

The Office of Mapping and Geographic Information is responsible for the following activities:

- Assignment of addresses and approval of street names
- Development and maintenance of [web mapping services](#)
- Development of applications to support county business practices
- Distribution of [maps and spatial data](#)
- Management of the [Loudoun County Store](#)
- Management of the spatial database
- Map and database support for computer aided dispatch (9-1-1), the assessment database, Land Management Information System (permits), and other computer systems
- Mapping of all changes to parcels and other layers
- Spatial data development, internal mapping, and analytical services for

Contact

Larry Stipek
Director
[email](#)

1 Harrison St. SE
Mail Stop #65
Leesburg, VA 20175

Ph: 703-771-5778
Fx: 703-771-5075

Hours

Monday - Friday
8:00 am - 4:30 pm

QUICK LINKS [VIEW ALL](#)

- [Loudoun County Online Mapping System](#)
- [Loudoun County Map Gallery](#)
- [Homebuyer Information Guide](#)
- [Loudoun County Mapping Applications](#)

FAQS [VIEW ALL](#)

- [How do I find out who owns a property?](#)
- [Do you have a plat of my property?](#)
- [Can I get the mapped data digitally?](#)
- [If I need an address what do I need to do?](#)
- [Who can help me find a parcel identification number \(PIN\) or tax map number?](#)
- [How do I get my Loudoun County address added to Google Maps or another private map service?](#)

Deed of Gift of Easement

Exempted from recordation tax
under the Code of Virginia (1950), as amended,
Sections 58.1-811 (A) (3), 58.1-811 (D) and 10.1-1803
and from Circuit Court Clerk's fee under Section 17.1-266

THIS DEED OF GIFT OF EASEMENT (this "Easement"), made this 21st day of June, 2010, between [REDACTED] "Grantor"; the Board of Supervisors of Loudoun County, Virginia the Grantee" (the designations "Grantor" and "Grantee" refer to the Grantor and Grantee and their respective successors and assigns).

WITNESSETH:

WHEREAS, Grantor is the owner in fee simple of real property situated at [REDACTED] Road in Loudoun County, Virginia, containing in the aggregate 350.60 acres as further described below (the "Property"), and desires to give and convey to Grantee a perpetual conservation and open-space easement over the Property as herein set forth; and

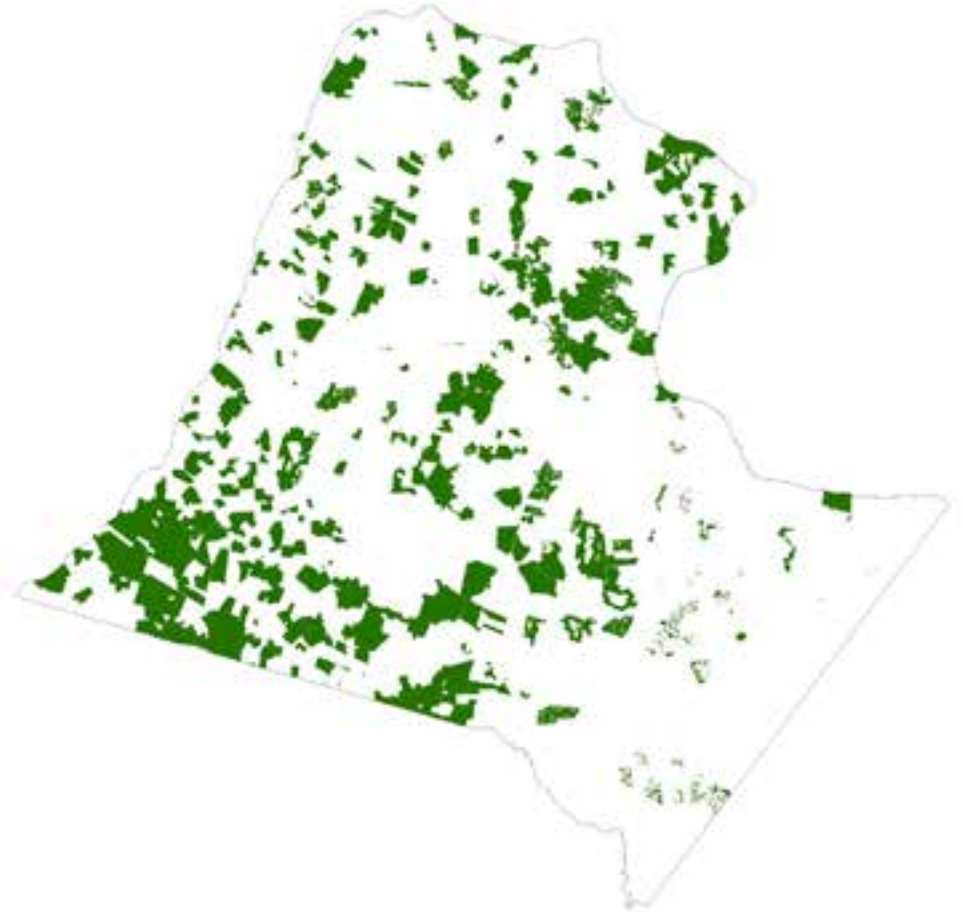
WHEREAS, Grantee is the elected governing body of the County of Loudoun, Virginia, and is a "public body" within the meaning of the Open-Space Land Act, Title 10.1, Chapter 17, of the Code of Virginia of 1950, as amended (the "Open-Space Land Act"), and is willing to accept a perpetual conservation and open-space easement over the Property as herein set forth; and

WHEREAS, the Open-Space Land Act, as enacted at Chapter 461 of the Virginia Acts of Assembly of 1966, declared that the preservation of open-space land serves a public purpose for the health and welfare of the citizens of the state by curbing urban sprawl, preventing the spread of urban blight and deterioration and encouraging more economic and desirable urban development, encouraging more desirable and economic development of natural resources, helping provide or preserve necessary park, recreational, historic and scenic areas, and conserving land and other natural resources,

(H) a large poplar a corner to Carr farm; thence with Carr farm line S 82 deg. 30' E 3.01 chains to (G), a stake at East side of a wire fence (said stake now being made a new corner to Rogers and Carr farms); thence in seven new lines of division through Rogers farm along West side of woods, as follows: 1st S 2 deg. 30' W 2.84 chains to (F) the eastern gate post at a gate leading from Rogers' field into the woods; thence again with the fence S 5 deg. 30' W 11.43 chains to (E) a small red oak in said fence; thence again with fence S 26 deg. 15' W 10.84 chains to (D), a large white oak in said fence; thence again with fence S 45 deg. W 9.77 chains to (C), a small hickory in said fence; thence again with fence S 22 - $\frac{3}{4}$ deg. W 4.79 chains to (B), a dead top Chestnut oak in said fence; thence again with fence S 13 deg. 40' W 3.50 chains to (A) another Chestnut oak in said fence; thence (still with western side of woods)

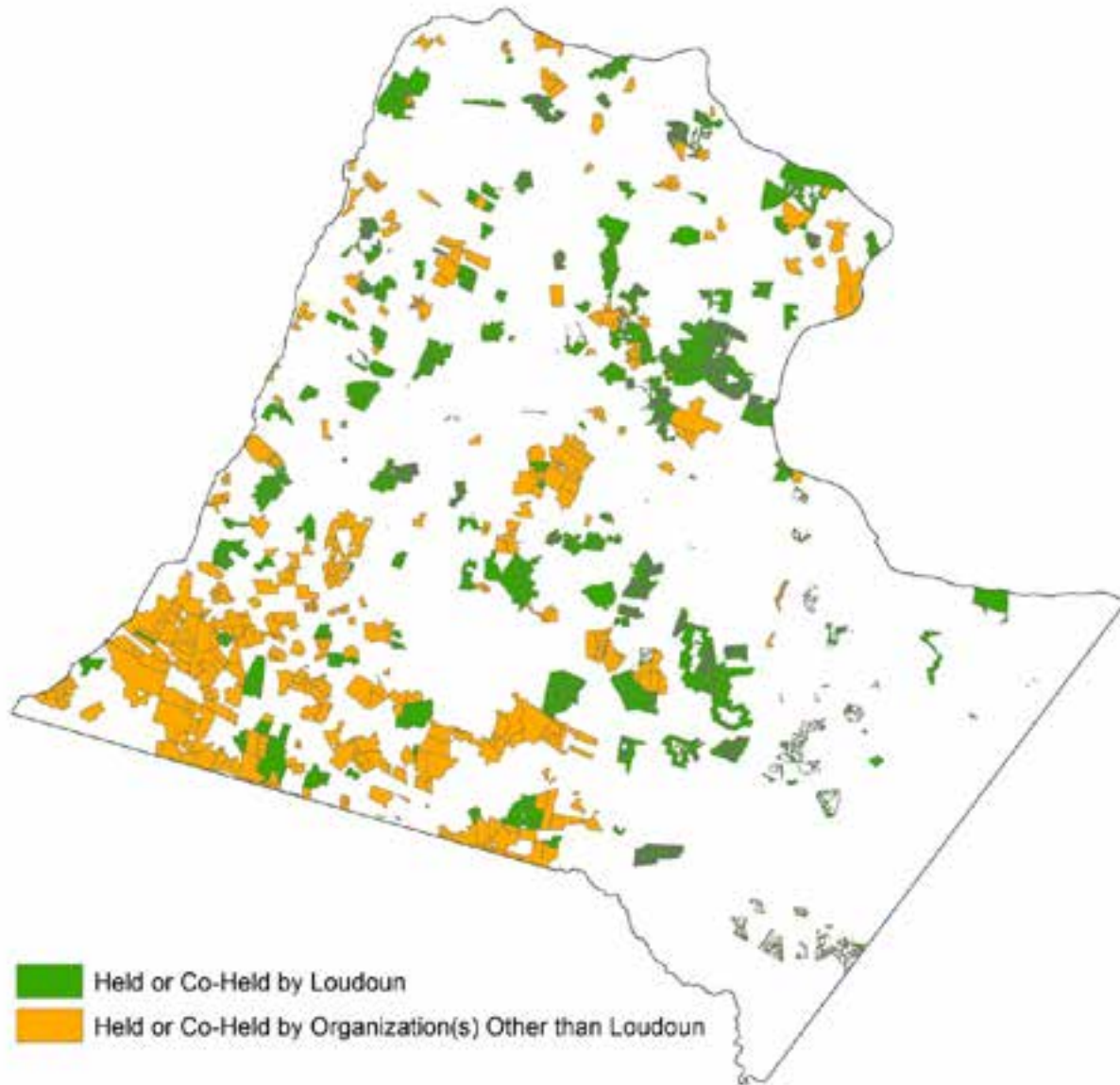
How many easements are in Loudoun County?

- Over 850 (and counting)
- 65,000 acres
- About 20% of the County



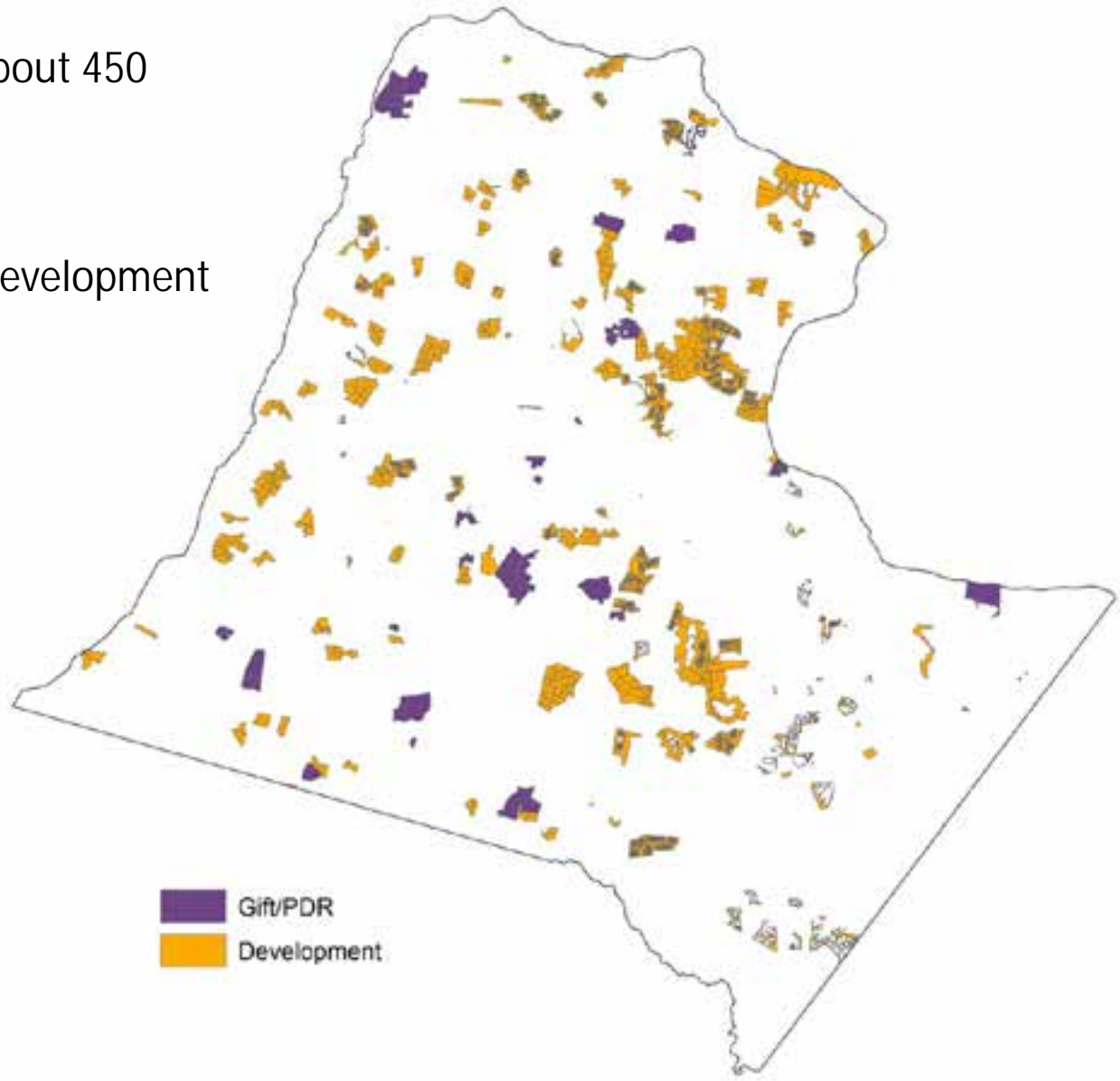
Why did the County need a Stewardship Program?

- We share responsibility to make sure easement terms are met
- Problems are more easily resolved if caught early
- Establishes a central point of contact for information



Loudoun Holds/Co-Holds About 450 Easements:

- 20 Gift/PDR
- 430 created through the development process



Phase I

- Establish and update an information website
- Contact landowners of solely held Gift easements
- Arrange for a site visit with landowner
- Document changes since the easement was established
- Follow up on any issues

2004



2012



Website with interactive ArcGIS Online map using Community Base Map

Site Tools

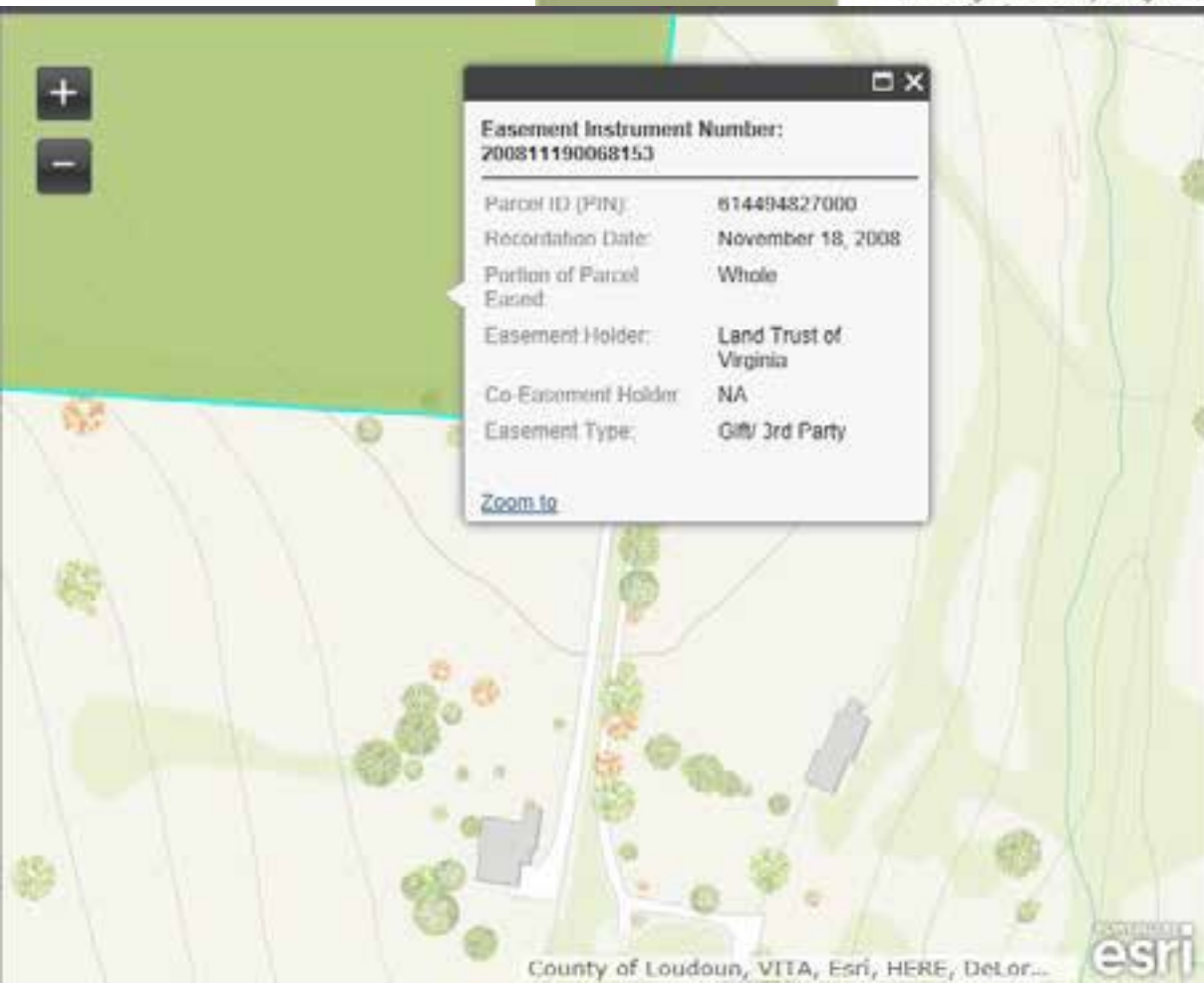
GOVERNMENT SERVICES BUSINESS HOW DO I... ABOUT LOUDOUN

Home > Government > County Departments > Departments H-Z > Mapping & Geographic Information > Conservation Easement Stewardship Program

Loudoun County Conservation Easement Stewardship Program

There are over 65,000 acres of land protected by conservation easements in Loudoun County as displayed in the interactive map below. A conservation easement restricts the use or development of real property for any of the following purposes:

- Retaining or protecting natural or open-space values of the property;
- Assuring its availability for agricultural, forestal,




+

-

Easement Instrument Number:	
200811190068153	
<hr/>	
Parcel ID (PIN):	614494827000
Recordation Date:	November 18, 2008
Portion of Parcel Eased:	Whole
Easement Holder:	Land Trust of Virginia
Co-Easement Holder:	NA
Easement Type:	Gift/ 3rd Party

[Zoom to](#)

County of Loudoun, VITA, Esri, HERE, DeLor... 

r quality, or
al or
y

ent Stewardship Program has been established to work with owners of
ssure that the terms of the easements continue to be met.

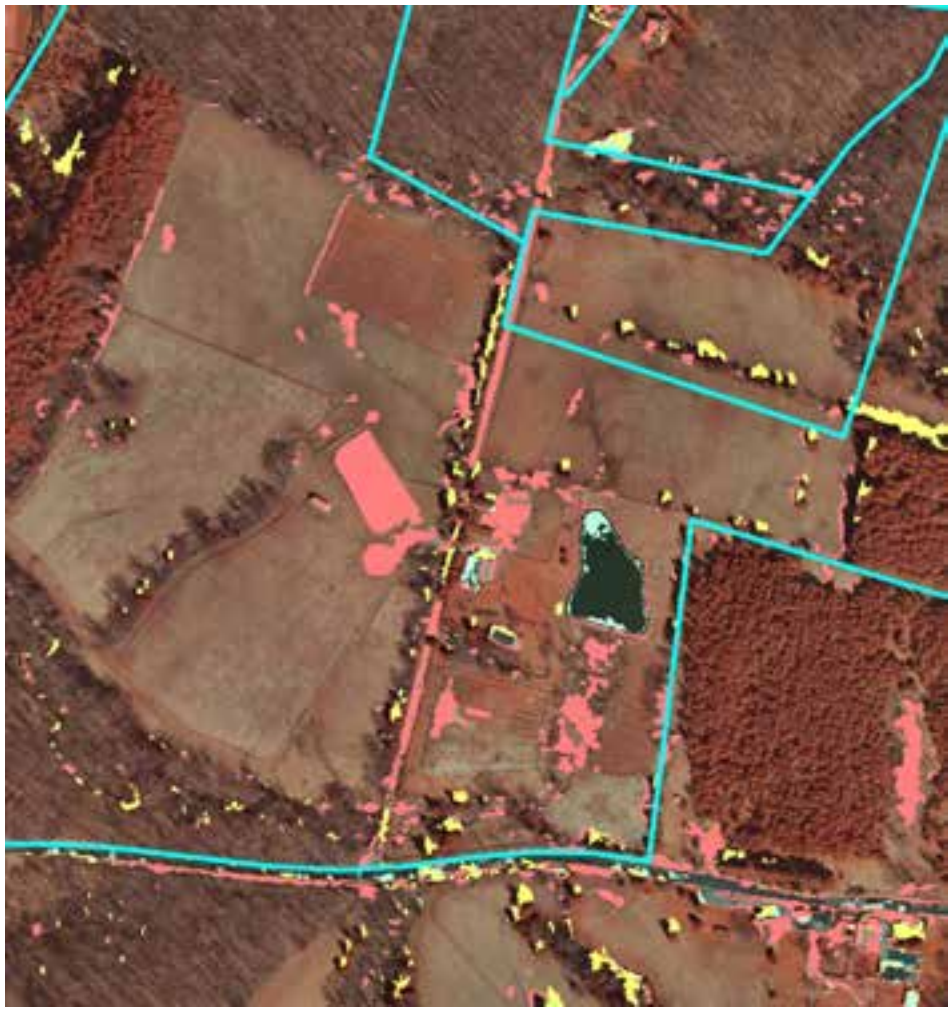
y asked questions about the program are online [here](#).

ounty Office of Mapping and Geographic Information at 703-771-5778 if you

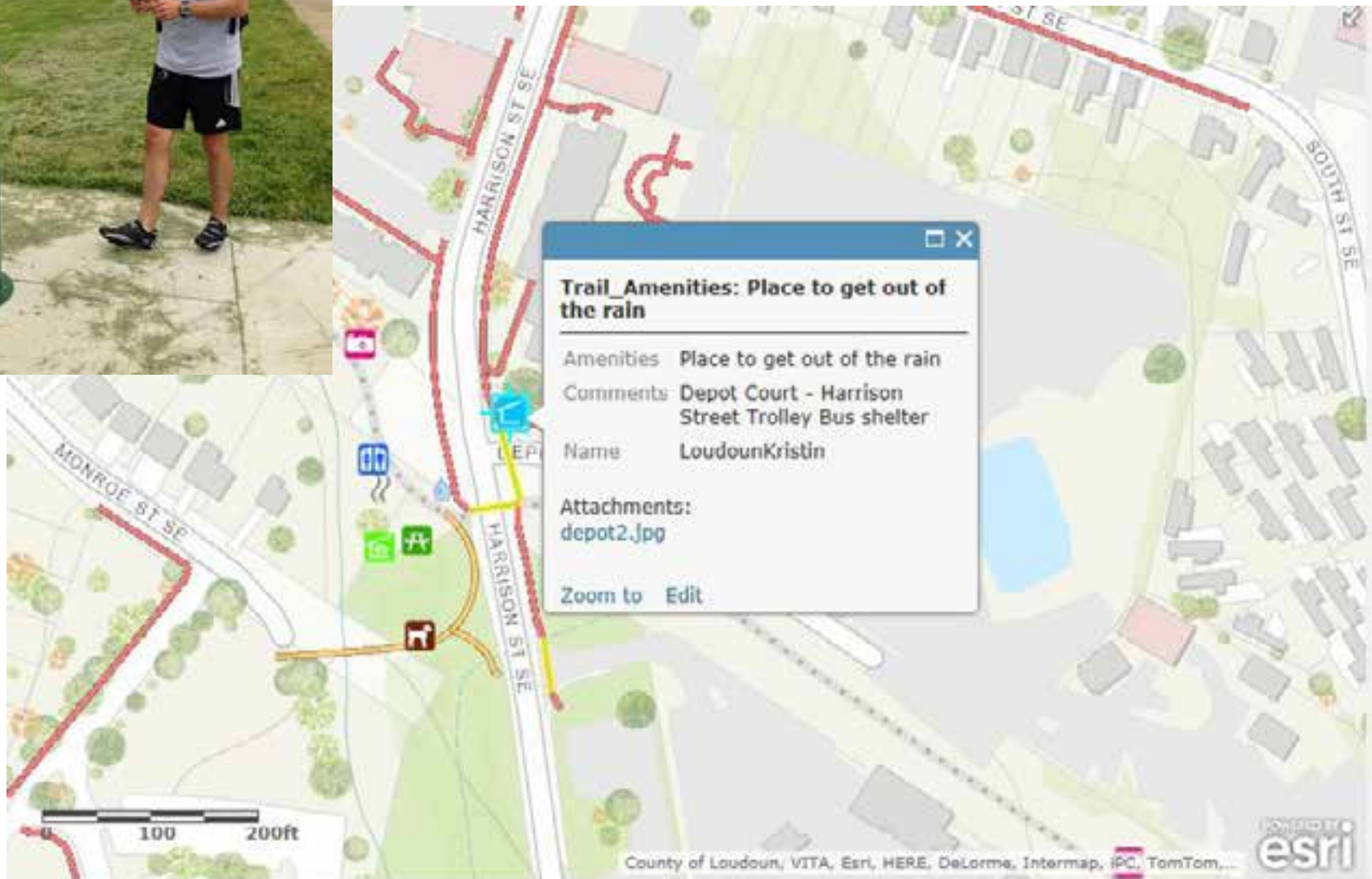
ments

Phase 2

- Contact/visit landowners of select Development-created easements
- Explore change detection using aerial photography & GIS
- Formalize relationships with co-holding organizations
- Create permit email notification system for easement holders



Mobile Data Collection for Stewardship



www.loudoun.gov/conservationeasements



www.loudoun.gov/omagi



larry.stipek@loudoun.gov & kristin.brown@loudoun.gov